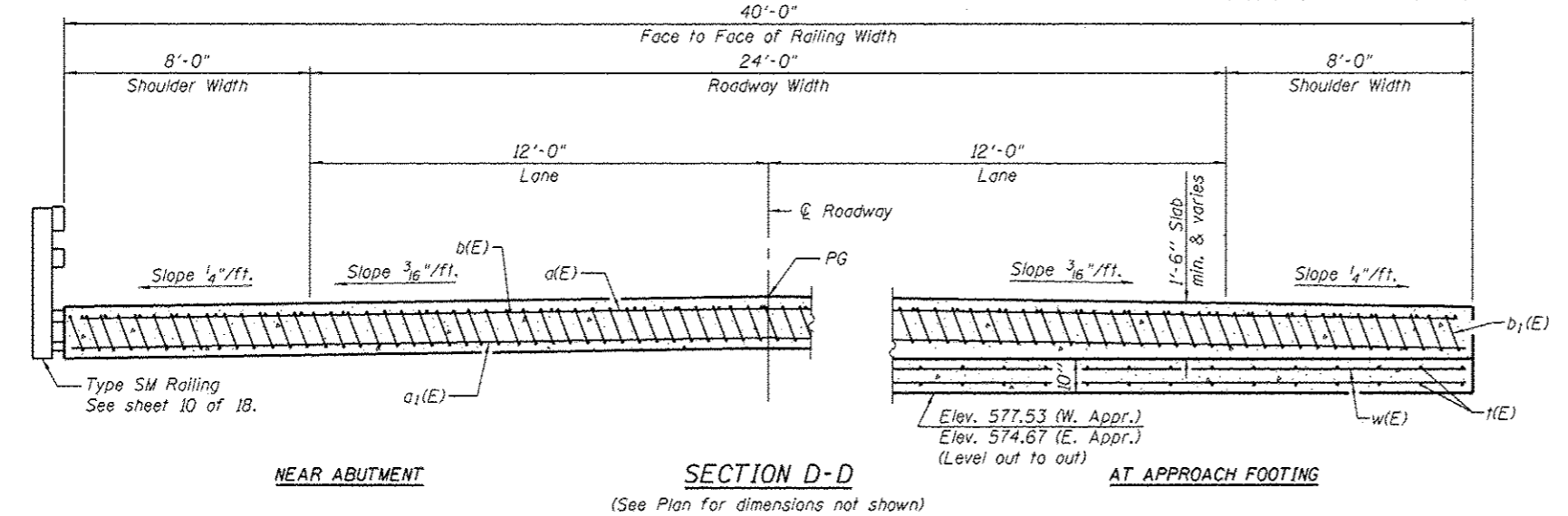
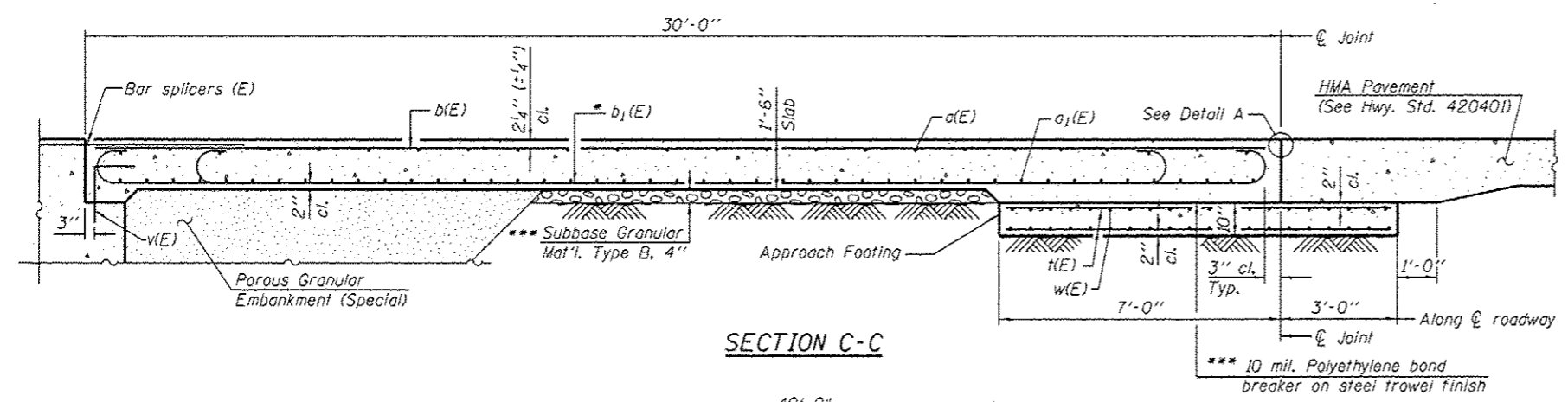


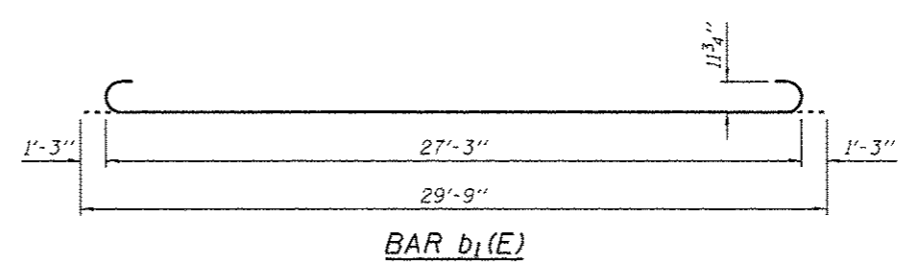
Notes:  
 See sheet 8 of 18 for Detail A.  
 Approach Slab concrete shall be paid for as Concrete Superstructure.  
 Approach Footing concrete shall be paid for as Concrete Structures.  
 Reinforcement shall be paid for as Reinforcement Bars, Epoxy Coated.  
 For v(E) bar details, see sheet 7 of 18.  
 The approach footing maximum applied service bearing pressure (Qmax) = 2.0 ksf.  
 For bar splicer details, see sheet 15 of 18.  
 Cost of excavation for Approach Footing included with Concrete Structures.  
 For Porous Granular Embankment (Special) and drainage treatment details, see sheet 2 of 18.



\* Tilt #9 b<sub>1</sub>(E) bars as required to maintain clearance.  
 \*\*\* Cost included with Concrete Superstructure.

**TWO APPROACHES  
 BILL OF MATERIAL**

Bar	No.	Size	Length	Shape
a(E)	62	#4	39'-8"	—
a <sub>1</sub> (E)	92	#5	39'-8"	—
b(E)	82	#4	29'-8"	—
b <sub>1</sub> (E)	192	#9	29'-9"	⌋
f(E)	164	#4	9'-8"	—
w(E)	80	#5	39'-8"	—
Concrete Structures			Cu. Yd.	24.7
Concrete Superstructure			Cu. Yd.	137.8
Bridge Deck Grooving			Sq. Yd.	266
Protective Coat			Sq. Yd.	266
Reinforcement Bars, Epoxy Coated			Pound	30,860



(Sheet 2 of 2)

P:\P-10\2356 - Smithville Road Bridge\DWG\CAD00 Sheets\Structure\18723148-2356-009-App\Slab04.dwg  
 5/8/15 11:51 AM

**INFRASTRUCTURE ENGINEERING**  
 456 Fulton Street | Suite 1041 Peoria, IL 61602  
 P: 309.233.1060 | F: 309.233.1030 | www.infrastructureeng.com

USER NAME =	DESIGNED - LAN	REVISED -
PLOT SCALE =	CHECKED - SPK	REVISED -
PLOT DATE =	DRAWN - LAN	REVISED -
	CHECKED - SPK	REVISED -

**PEORIA COUNTY  
 HIGHWAY DEPARTMENT**

**BRIDGE APPROACH SLAB DETAILS  
 STRUCTURE NO. 072-3148**

SHEET NO. 9 OF 18 SHEETS

F.A.S. RTE.	SECTION	COUNTY	TOTAL SHEETS	SHEET NO.
1381	10-00005-03-BR	PEORIA	55	31
CONTRACT NO. 89464			ILLINOIS FED. AID PROJECT	