

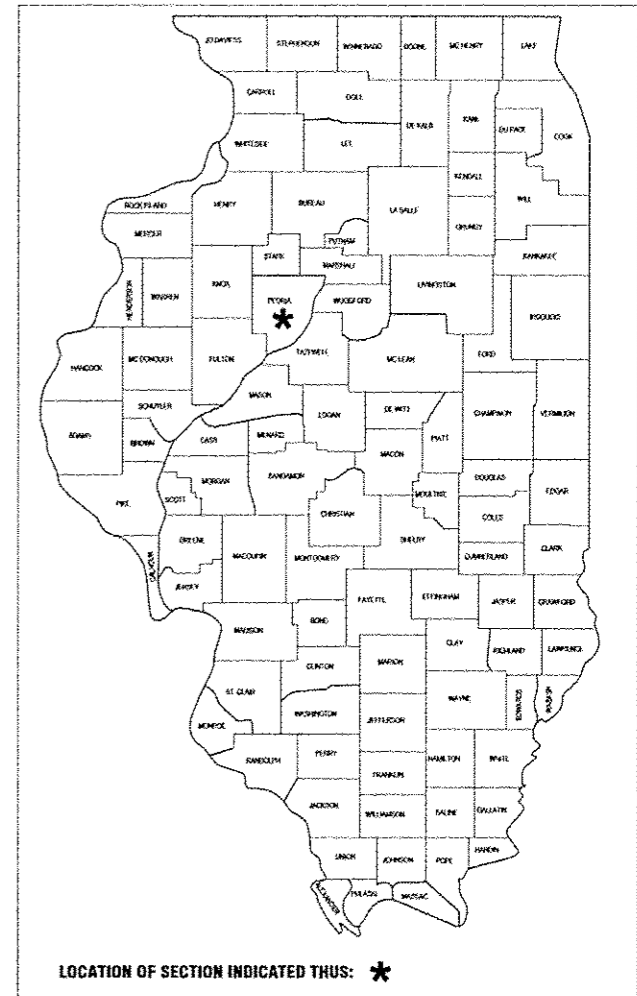
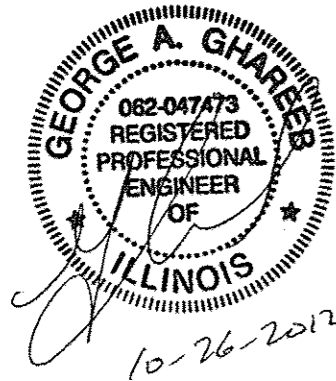
STATE OF ILLINOIS
DEPARTMENT OF TRANSPORTATION
DIVISION OF HIGHWAYS

**PROPOSED
HIGHWAY PLANS**

EAST MAIN STREET
SECTION: 10-00002-00-LS
PROJECT NO.: TE-0004(117)
CITY OF ELMWOOD STREETScape IMPROVEMENTS
PEORIA COUNTY
JOB NO. C-94-067-11

F.A. NO.	SECTION	COUNTY	TOTAL SHEETS	SHEET NO.
VARIES	10-00002-00-LS	PEORIA	34	1
			CONTRACT NO. 89604	

FOR INDEX OF SHEETS, SEE SHEET NO. 2
LIST OF STATE STANDARDS LOCATED ON
SHEET NO. 2

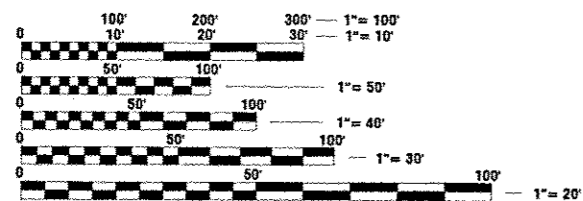


TRAFFIC DATA

ADT = 1650 VPD (DESIGN YEAR N/A)

POSTED SPEED = 25 MPH

ROADWAY DESIGNATION = STATE

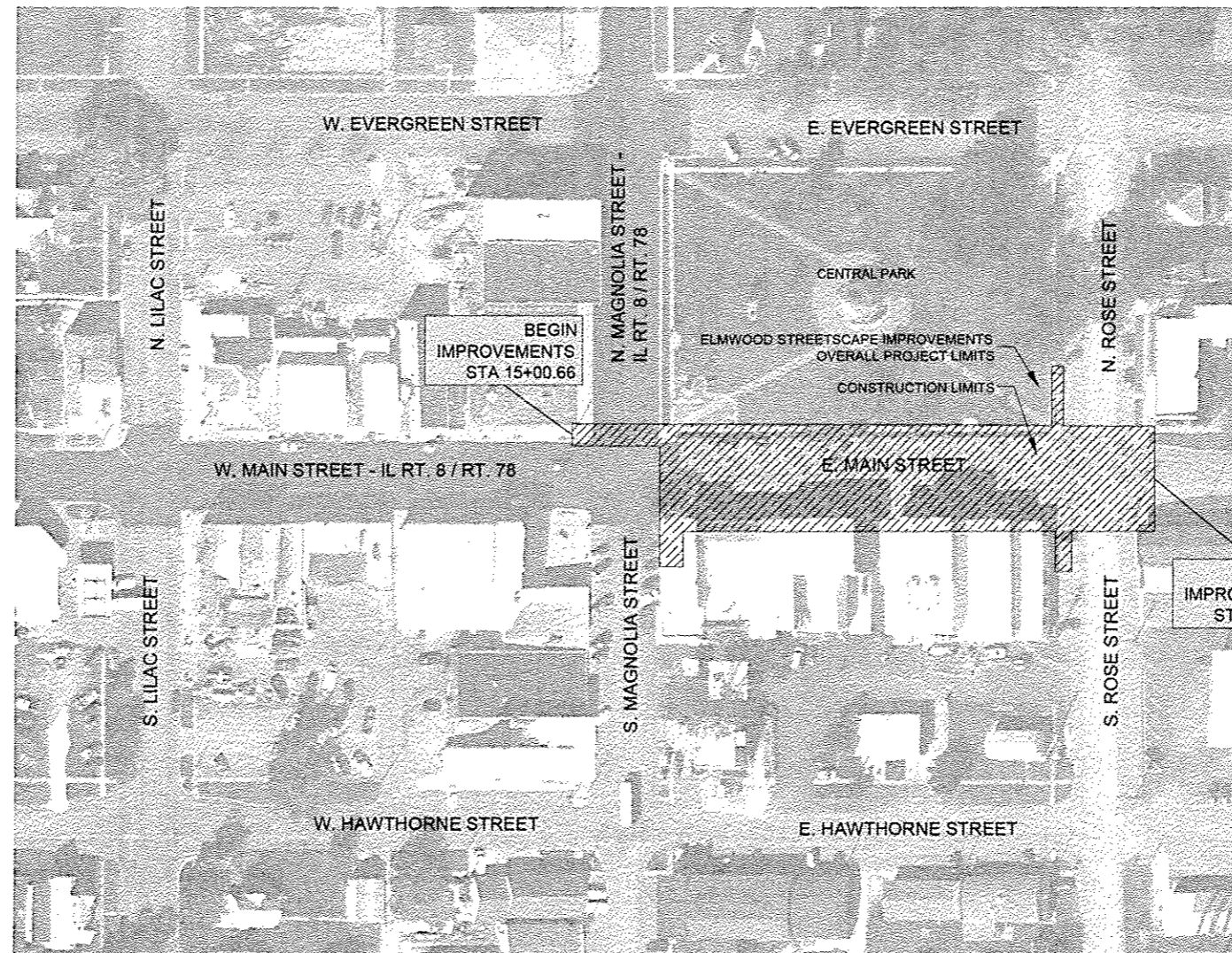


FULL SIZE PLANS HAVE BEEN PREPARED USING STANDARD ENGINEERING SCALES. REDUCED SIZED PLANS WILL NOT CONFORM TO STANDARD SCALES. IN MAKING MEASUREMENTS ON REDUCED PLANS, THE ABOVE SCALES MAY BE USED.

J.U.L.I.E.
JOINT UTILITY LOCATION INFORMATION FOR EXCAVATION
1-800-892-0123 OR 811

TERRA ENGINEERING, LTD.

CONTRACT NO. 89604



PROJECT AREA MAP

CITY OF ELMWOOD	
Approved	10-29-2012 <i>J. C. Capone</i> LOCAL AGENCY, POSITION
Passed	11/04/12 <i>[Signature]</i> DISTRICT 4 ENGINEER OF LOCAL ROAD & STREETS
Releasing for Bid Based on Limited Review	11-2-12 <i>J. C. Capone</i> DEPUTY DIRECTOR OF HIGHWAYS, REGION 3 ENGINEER

**PRINTED BY THE AUTHORITY
OF THE STATE OF ILLINOIS**