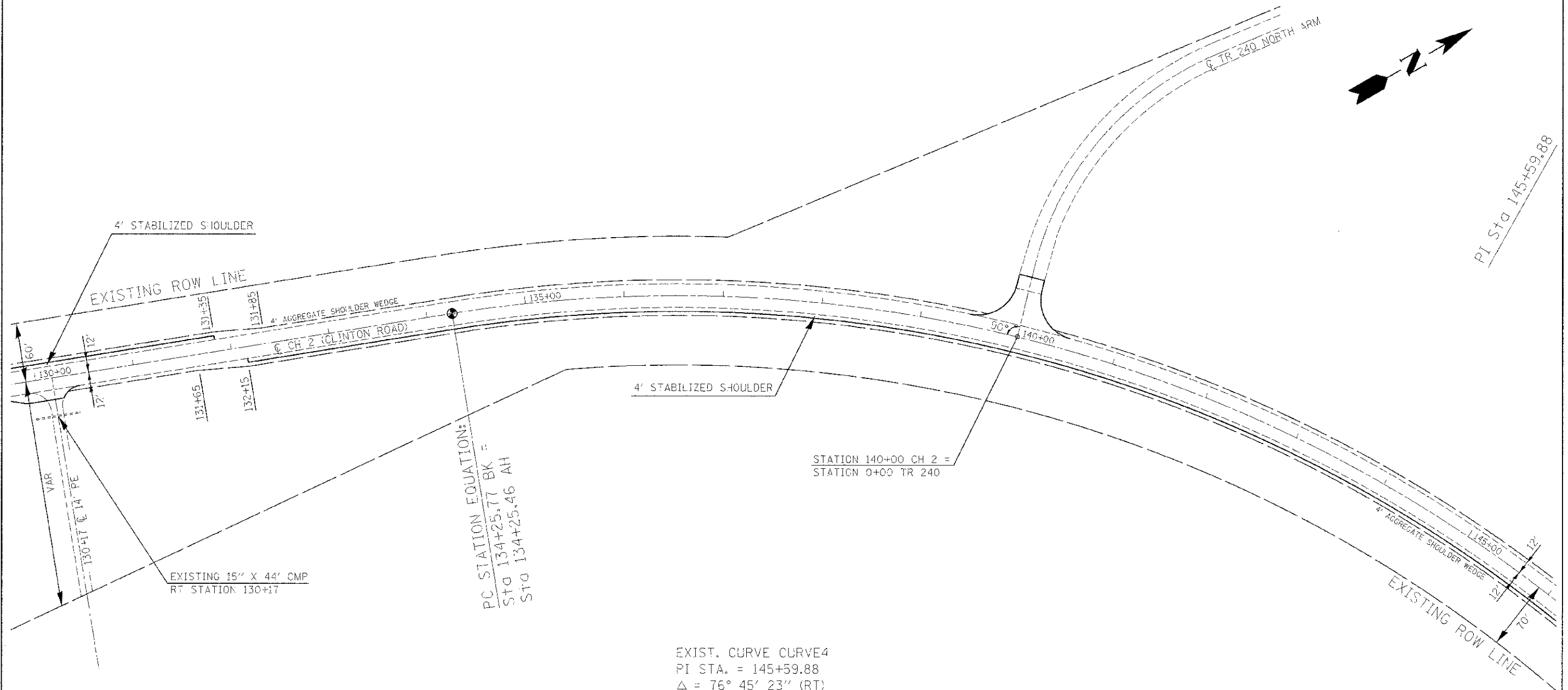


SECTION 22, T. 14 N., R. 11 W., 2nd P.M.

ROUTE	SECTION	COUNTY	TOTAL SHEETS	SHEET NO.
FAS 684 (CH 2)	10-00103-02-RS	EDGAR	41	17
EDGAR COUNTY, ILLINOIS		FED. AID PROJECT		

CONTRACT NO. 91471



PC STATION EQUATION:
 STG 134+25.77 BK =
 STG 134+25.46 AH

STATION 140+00 CH 2 =
 STATION 0+00 TR 240

EXIST. CURVE CURVE4
 PI STA. = 145+59.88
 $\Delta = 76^\circ 45' 23''$ (RT)
 D = 4° 00' 00"
 R = 1,432.40'
 T = 1,134.42'
 L = 1,918.92'
 E = 394.80'
 SE = 0.08 FT/FT
 P.C. STA. = 134+25.46
 P.T. STA. = 153+44.38
SUPER ELEVATION ATTAINED:
 STATION 132+65.46 TO STATION 135+05.46
 STATION 152+64.37 TO STATION 155+04.37

SCALE: 1"=50'



SECTION 22, T. 14 N., R. 11 W., 2nd P.M.