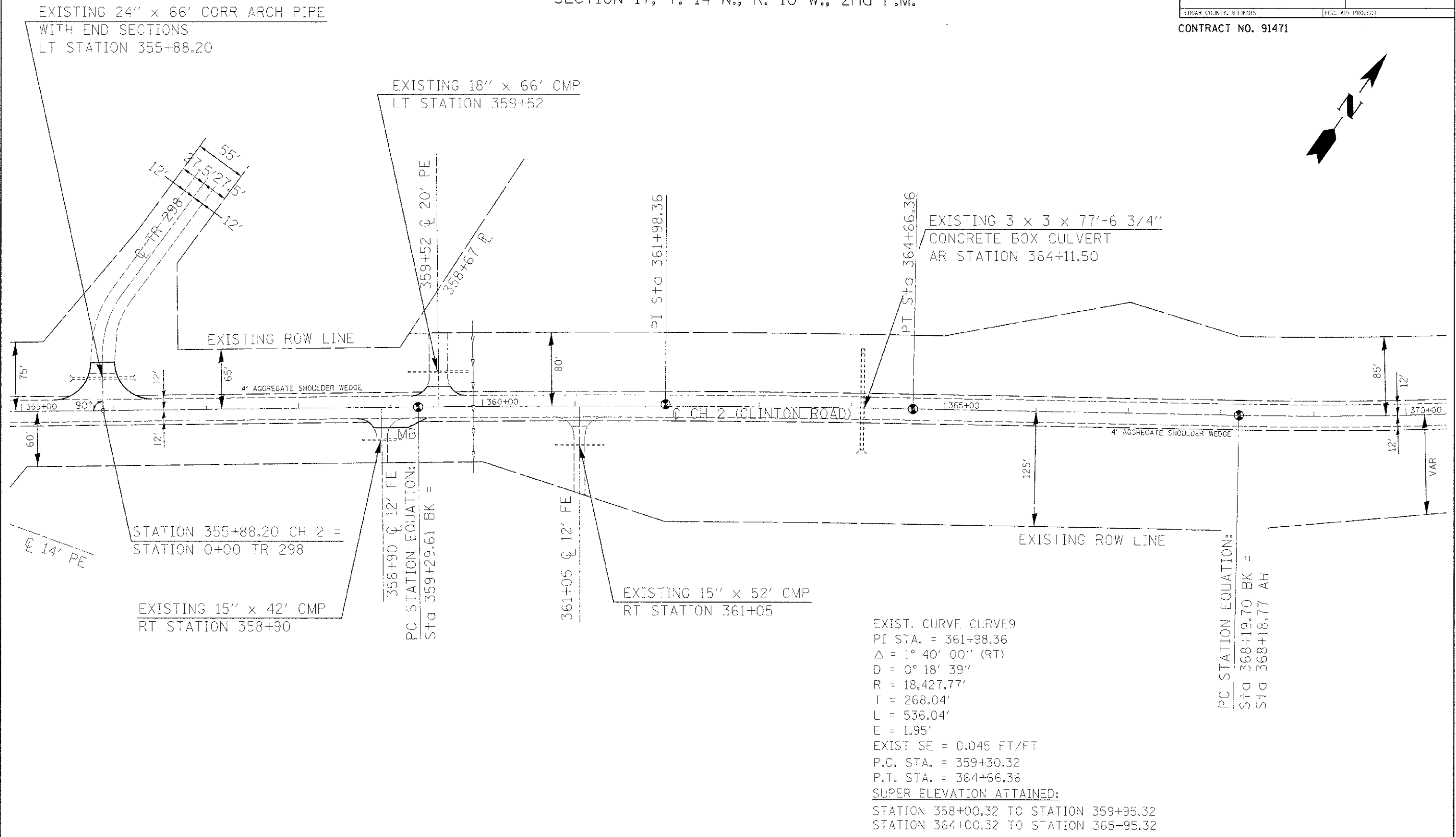
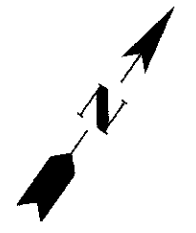


SECTION 17, T. 14 N., R. 10 W., 2nd P.M.

ROUTE	SECTION	COUNTY	TOTAL SHEETS	SHEET NO.
FAS 684 (CH 2)	10-00103-02-R5	EDGAR	4	32
EDGAR COUNTY, ILLINOIS		FED. AID PROJECT		

CONTRACT NO. 91471



EXISTING 24" x 66' CORR ARCH PIPE
WITH END SECTIONS
LT STATION 355+88.20

EXISTING 18" x 66' CMP
LT STATION 359+52

EXISTING 3 x 3 x 77'-6 3/4"
CONCRETE BOX CULVERT
AR STATION 364+11.50

STATION 355+88.20 CH 2 =
STATION 0+00 TR 298

EXISTING 15" x 42' CMP
RT STATION 358+90

EXISTING 15" x 52' CMP
RT STATION 361+05

EXIST. CURVE CURVE 9
PI STA. = 361+98.36
 $\Delta = 1^\circ 40' 00''$ (RT)
D = 0° 18' 39"
R = 18,427.77'
T = 268.04'
L = 536.04'
E = 1.95'
EXIST SE = 0.045 FT/FT
P.C. STA. = 359+30.32
P.T. STA. = 364+66.36

SUPER ELEVATION ATTAINED:
STATION 358+00.32 TO STATION 359+95.32
STATION 364+00.32 TO STATION 365-95.32

SCALE: 1" = 50'



SECTION 17, T. 14 N., R. 10 W., 2nd P.M.