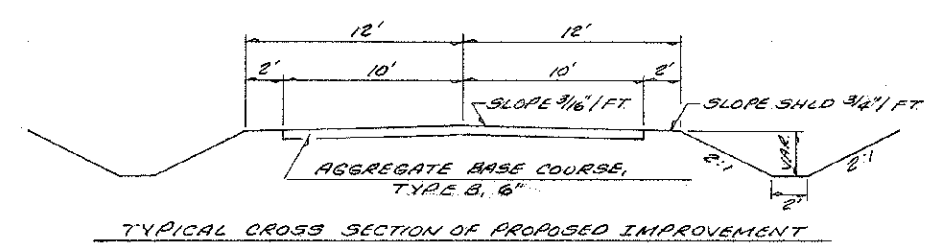
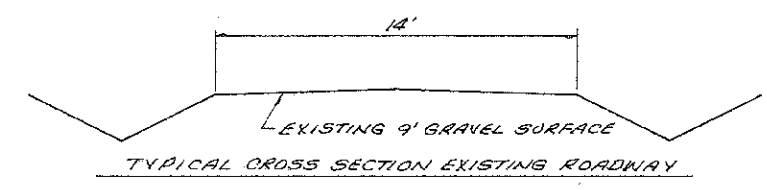


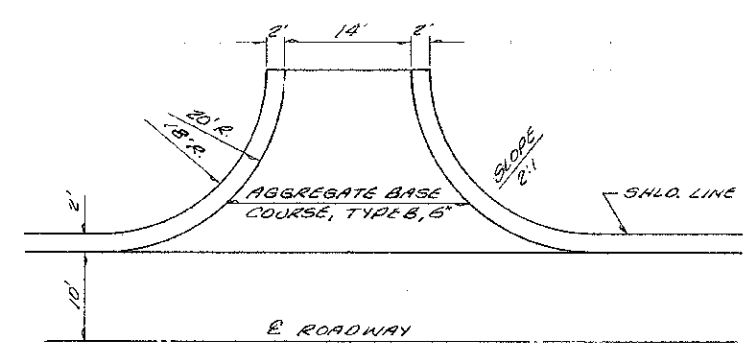
F.S. NO.	SECTION	COUNTY	TOTAL SHEETS	SHEET
08-1810-00-BR	WAYNE	MI	12	2
STA. 0700	TO STA. 8100			
FED. ROAD DIST. NO.	ILLINOIS	PROJECT		



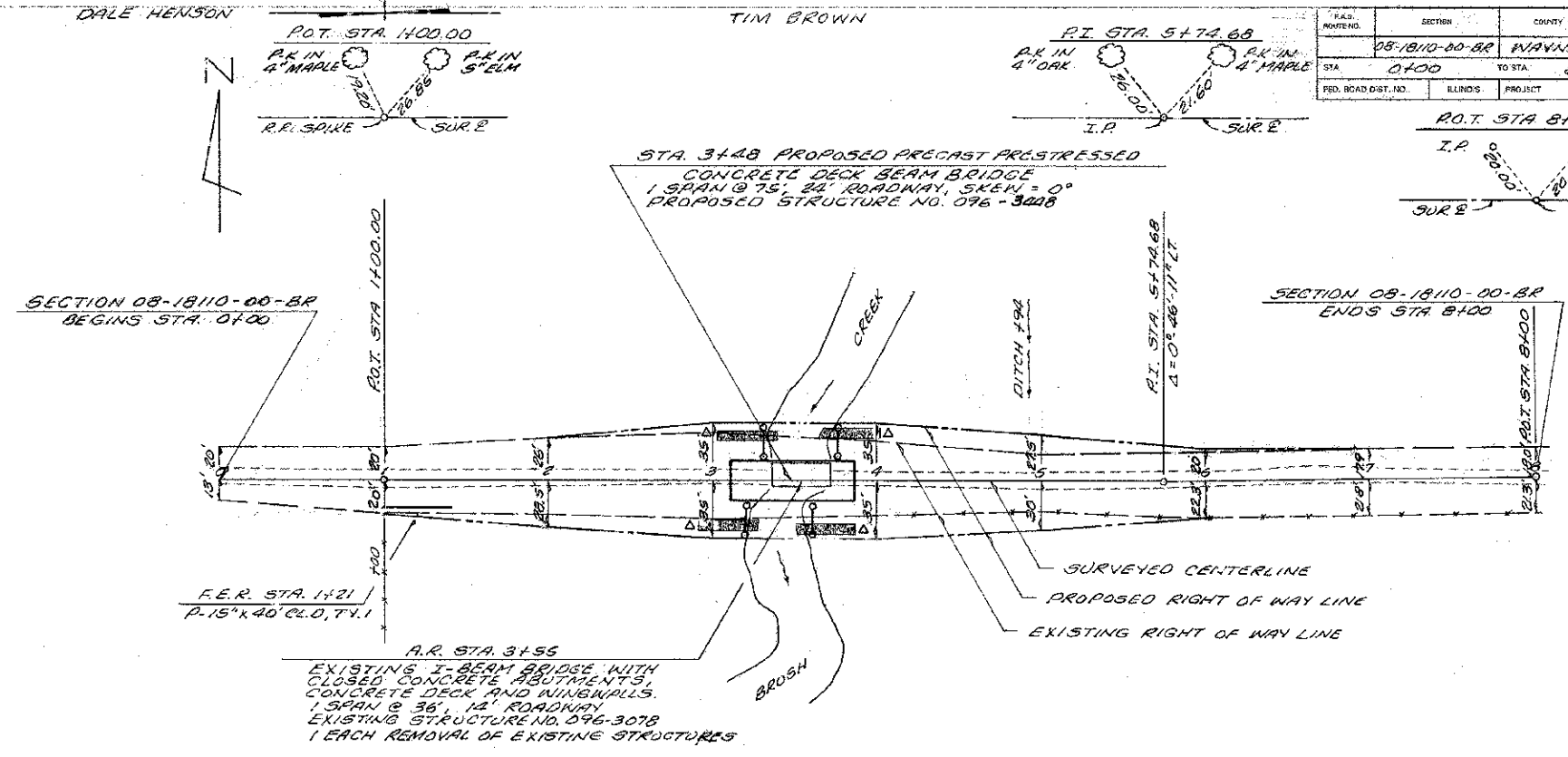
TYPICAL CROSS SECTION OF PROPOSED IMPROVEMENT



TYPICAL CROSS SECTION EXISTING ROADWAY



DETAIL OF FIELD ENTRANCE



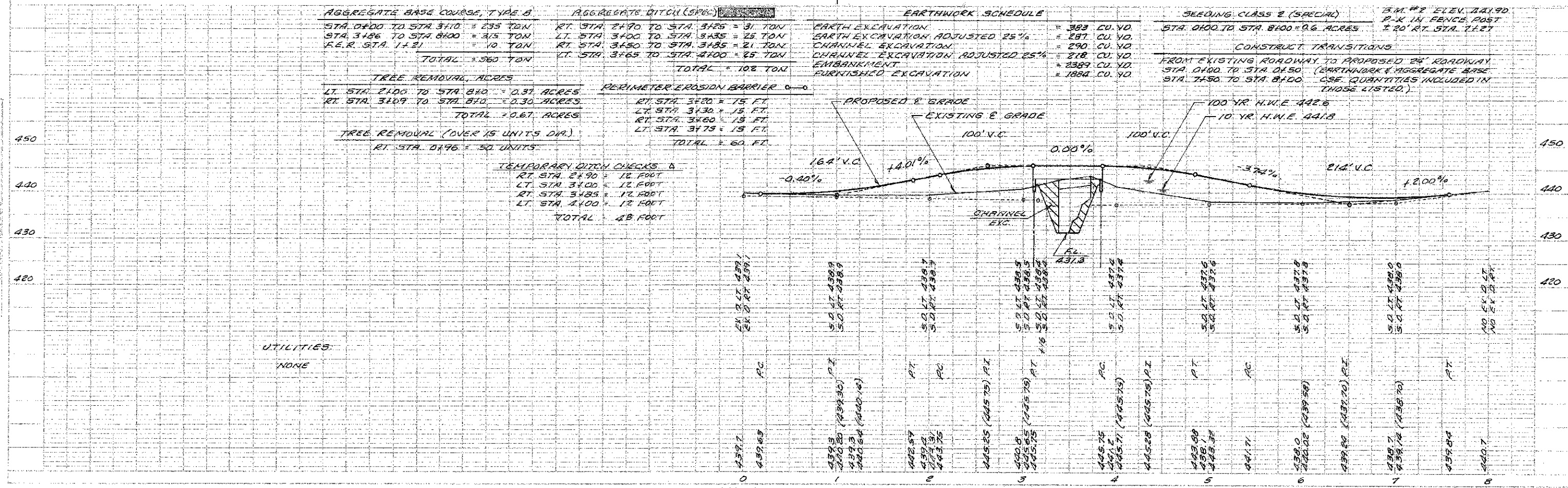
SECTION 08-1810-00-BR BEGINS STA. 0700

SECTION 08-1810-00-BR ENDS STA. 8100

AGGREGATE BASE COURSE, TYPE B	AGGREGATE DITCH (SPAL)	PERIMETER EROSION BARRIER
STA. 0700 TO STA. 3110 = 235 TON	RT. STA. 3190 TO STA. 3125 = 31 TON	RT. STA. 3120 = 15 FT.
STA. 3186 TO STA. 8100 = 315 TON	LT. STA. 3100 TO STA. 3135 = 25 TON	LT. STA. 3130 = 15 FT.
F.E.R. STA. 1121 = 10 TON	RT. STA. 3150 TO STA. 3185 = 21 TON	RT. STA. 3160 = 15 FT.
TOTAL = 560 TON	LT. STA. 3165 TO STA. 4100 = 25 TON	LT. STA. 3175 = 15 FT.
	TOTAL = 102 TON	TOTAL = 60 FT.
TREE REMOVAL, ACRES		
LT. STA. 2100 TO STA. 810 = 0.87 ACRES		
RT. STA. 3109 TO STA. 810 = 0.30 ACRES		
TOTAL = 1.17 ACRES		
TREE REMOVAL (OVER 15 UNITS DIA.)		
RT. STA. 0196 = 50 UNITS		
TEMPORARY DITCH CHECKS &		
RT. STA. 2190 = 12 FOOT		
LT. STA. 3100 = 12 FOOT		
RT. STA. 3185 = 12 FOOT		
LT. STA. 4100 = 12 FOOT		
TOTAL 48 FOOT		

EARTHWORK SCHEDULE	
EARTH EXCAVATION	= 383 CU. YD.
EARTH EXCAVATION ADJUSTED 25%	= 287 CU. YD.
CHANNEL EXCAVATION	= 290 CU. YD.
CHANNEL EXCAVATION ADJUSTED 25%	= 218 CU. YD.
EMBANKMENT	= 2389 CU. YD.
FURNISHED EXCAVATION	= 1884 CU. YD.

SEEDING CLASS 2 (SPECIAL)	
STA. 0700 TO STA. 8100 = 0.6 ACRES	15 M. #2 ELEV. 711.90
	2' X 12' FENCE POST
	1' 20' RT. STA. 7127
CONSTRUCT TRANSITIONS	
FROM EXISTING ROADWAY TO PROPOSED 24' ROADWAY	
STA. 0700 TO STA. 0750 (EARTHWORK & AGGREGATE BASE)	
STA. 7150 TO STA. 8100 (EARTHWORK & AGGREGATE BASE)	
SEE QUANTITIES INCLUDED IN THOSE LISTED.	



UTILITIES
NONE