

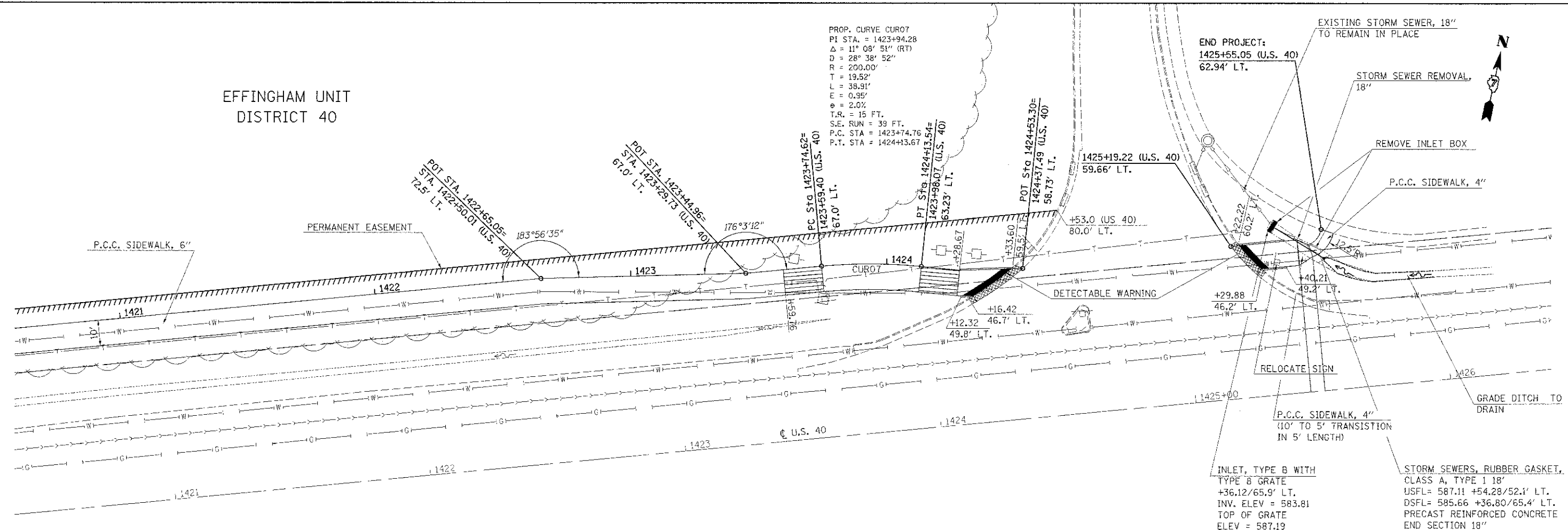
EFFINGHAM UNIT  
DISTRICT 40

DATE	
BY	
PLANNED	
DESIGNED	
CHECKED	
DATE	
NO.	

DATE	
BY	
PLANNED	
DESIGNED	
CHECKED	
DATE	
NO.	

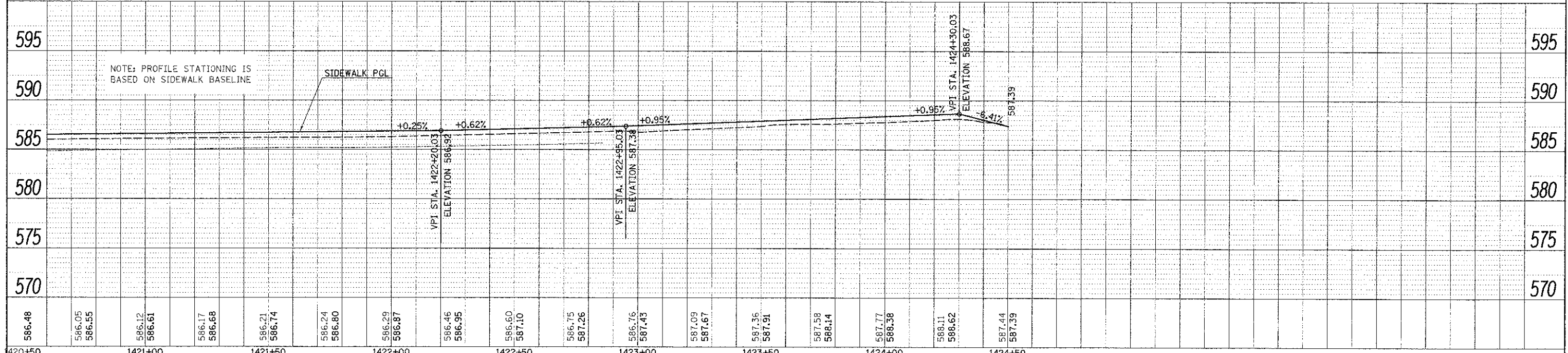
PROP. CURVE CU07  
PI STA. = 1423+94.28  
Δ = 11° 08' 51" (RT)  
D = 28° 38' 52"  
R = 200.00'  
T = 19.52'  
L = 38.91'  
E = 0.95'  
e = 2.0%  
T.R. = 15 FT.  
S.E. RUN = 39 FT.  
P.C. STA = 1423+74.76  
P.T. STA = 1424+13.67

END PROJECT:  
1425+55.05 (U.S. 40)  
62.94' LT.



BM 700: CHISELED SQUARE ON THE TOP NORTHEAST CORNER OF THE BASE OF THE NORTHEAST PIER OF I-57 & I-70 OVER U.S. RTE. 40  
STATION 1423+80.9; 37.5' RT.  
ELEVATION 591.2672

- SUPERELEVATION TRANSITION
- COMBINATION CONCRETE CURB AND GUTTER REMOVAL



FILE NAME	USER NAME = swartzw	DESIGNED -	REVISED -	<b>STATE OF ILLINOIS DEPARTMENT OF TRANSPORTATION</b>	<b>SIDEWALK PLAN</b>	F.A.S. RTE.	SECTION	COUNTY	TOTAL SHEETS	SHEET NO.
3:\work\p\side\swartzw\20269398\079563\sh-r-pln-prof.dgn	CHECKED -	REVISED -	2796			11-00126-00-BT	EFFINGHAM	34	11	
PLOT SCALE = 20.0000' / 1"	DATE -	REVISED -	CONTRACT NO. 95663							
PLOT DATE = 11/19/2012	DATE -	REVISED -	ILLINOIS FED. AID PROJECT							