

ROUTE NO.	SECTION	COUNTY	TOTAL SHEETS	SHEET NO.
T.R. 19	09-04131-00-BR	MOULTRIE	25	1
FED. ROAD DIST. NO.		ILLINOIS CONTRACT NO. 95697		

**STATE OF ILLINOIS**  
**DEPARTMENT OF TRANSPORTATION**  
**DIVISION OF HIGHWAYS**

**PLANS FOR PROPOSED**  
**HIGHWAY BRIDGE PROGRAM**

**PROJECT BROS-0139(061)**  
**SECTION 09-04131-00-BR**  
**LOVINGTON TOWNSHIP**  
**MOULTRIE COUNTY**  
**T.R. 19 / OLD SPRINGFIELD ROAD**  
**PROPOSED STRUCTURE NO. 070-4443**  
**C-97-063-12**

**INDEX OF SHEETS**

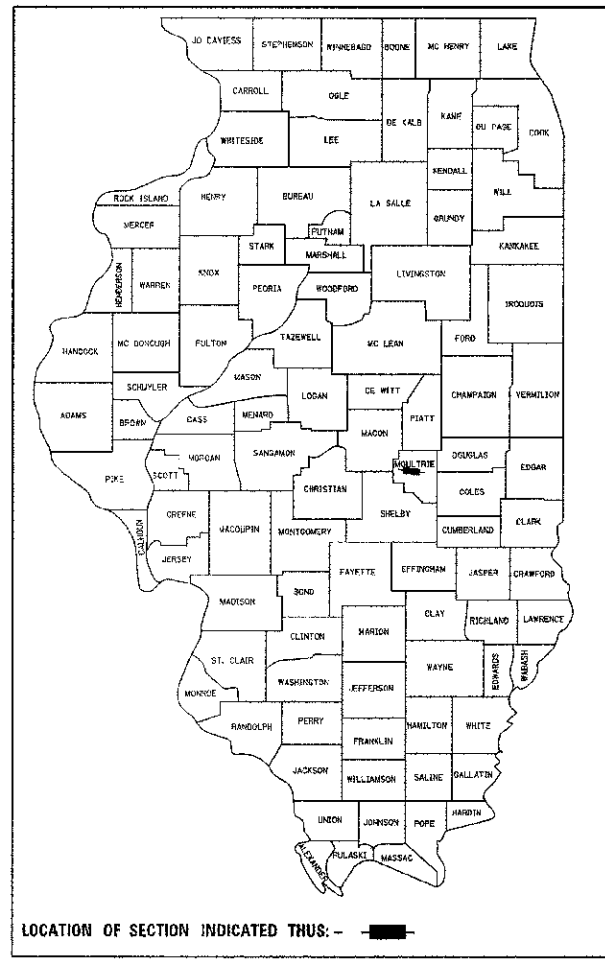
SHEET NO.	DESCRIPTION
1.	COVER SHEET
2.	SUMMARY OF QUANTITIES AND GENERAL NOTES
3.	TYPICAL CROSS SECTIONS
4-6.	PLAN & PROFILE
7-15.	STATION CROSS SECTIONS
16-23.	BRIDGE PLANS
24-25.	BORINGS

HIGHWAY STANDARDS:

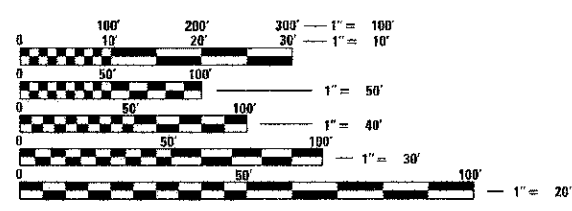
000001-06	STANDARD SYMBOLS, ABBREVIATIONS, AND PATTERNS
515001-03	NAME PLATE FOR BRIDGES
635006-03	REFLECTOR AND TERMINAL MARKER PLACEMENT
701901-02	TRAFFIC CONTROL DEVICES
BLR 21-9	TYPICAL APPLICATION OF TRAFFIC CONTROL DEVICES FOR CONSTRUCTION ON RURAL LOCAL HIGHWAYS

**UTILITIES**

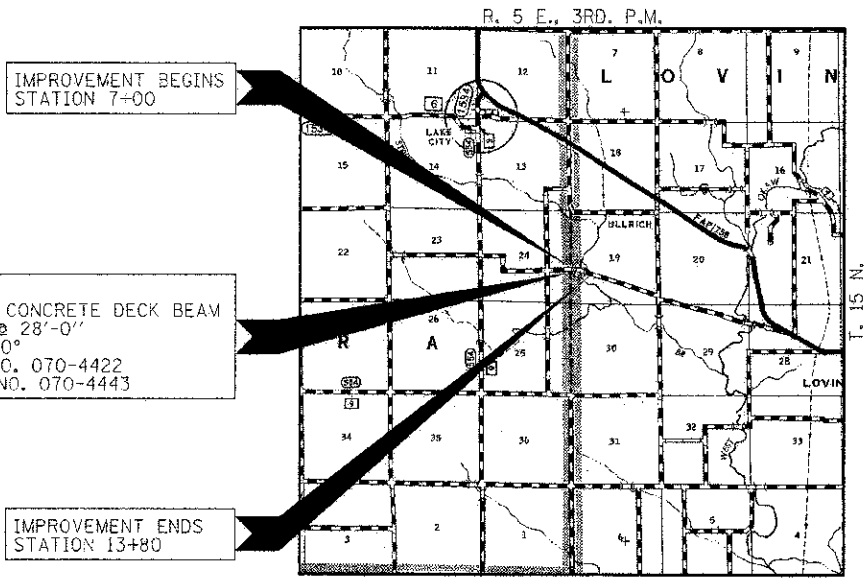
COLES-MOULTRIE ELECTRIC COOPERATIVE  
104 DeWITT AVENUE  
PO BOX 709  
MATTOON, IL 61938-0709  
ATTN: DENNIS RAY



FUNCTIONAL CLASSIFICATION: LOCAL ROAD (0-250 ADT)  
DESIGN SPEED: 30 MPH  
DESIGN TRAFFIC: 125 ADT (2005)



FULL SIZE PLANS HAVE BEEN PREPARED USING STANDARD ENGINEERING SCALES. REDUCED SIZED PLANS WILL NOT CONFORM TO STANDARD SCALES. IN MAKING MEASUREMENTS ON REDUCED PLANS, THE ABOVE SCALES MAY BE USED.

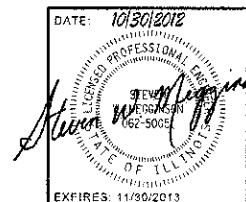


**LOCATION MAP**

APPROXIMATE SCALE: 0 1 MILE  
NET LENGTH OF SECTION = 680 FEET = 0.129 MILES



ILLINOIS DEPARTMENT OF TRANSPORTATION	
APPROVED	NOVEMBER 5 2012 <i>Jeffrey B. Cook</i> COUNTY ENGINEER
APPROVED	NOVEMBER 5 2012 <i>Glenn Cohen</i> TOWNSHIP COMMISSIONER
PASSED	11/15 2012 <i>Maureen Carroll</i> DISTRICT SEVEN ENGINEER OF LOCAL ROADS & STREETS
Releasing For Bid Based on Limited Review	11-15 2012 <i>Roger A. Swadlow</i> DEPUTY DIRECTOR OF HIGHWAYS REGION FOUR ENGINEER STATE OF ILLINOIS DEPARTMENT OF TRANSPORTATION



**HAMPTON, LENZINI AND RENWICK, INC.**  
CIVIL ENGINEERS • STRUCTURAL ENGINEERS • LAND SURVEYORS  
3085 STEVENSON DRIVE, SUITE 201  
SPRINGFIELD, ILLINOIS 62703  
217.546.3400 www.hirengineering.com

**CONTRACT NO. 95697**