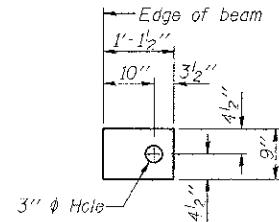


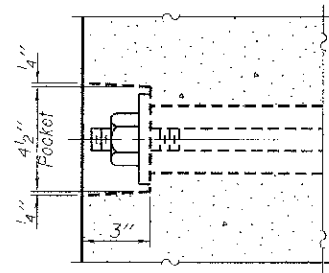
FABRIC BEARING PAD
(Interior - 36 Req'd.)



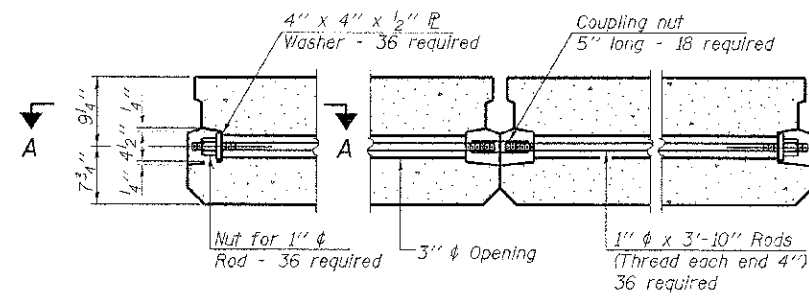
FABRIC BEARING PAD
(Exterior - 12 Req'd.)

Notes:
All bearing pads shall be 1" thick.
Omit holes when using expansion bearings.
Expansion bearing pad shall be bonded to the substructure.

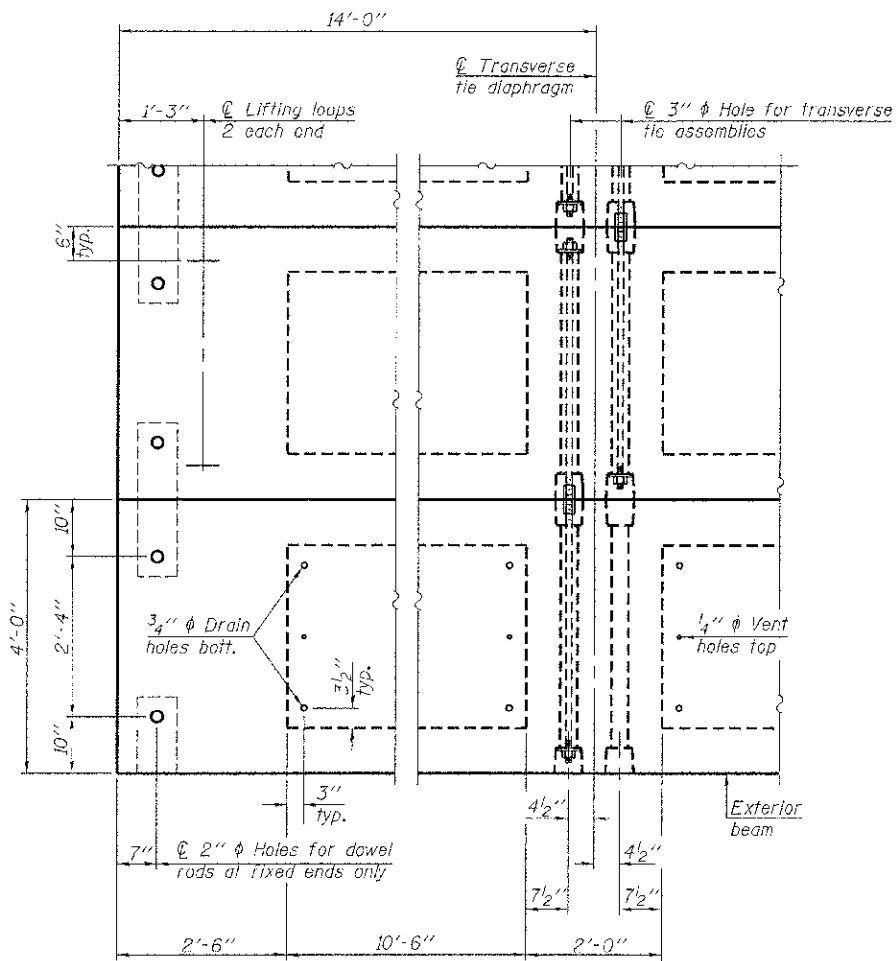
FIXED



SECTION A-A

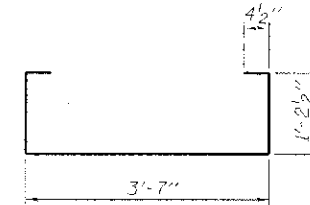


TYPICAL TRANSVERSE TIE ASSEMBLY

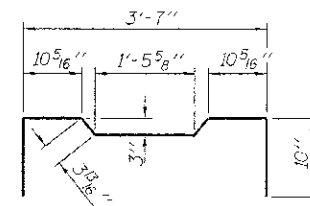


PLAN VIEW

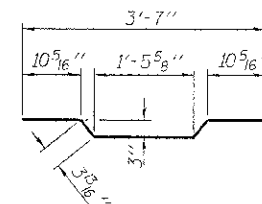
Note: Connect beams in pairs with the transverse tie configuration shown.



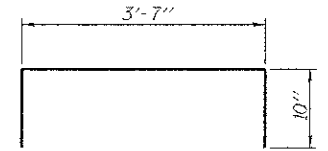
BAR S(E)



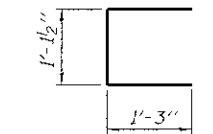
BAR S₂(E)



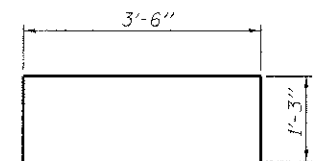
BAR A₁(E)



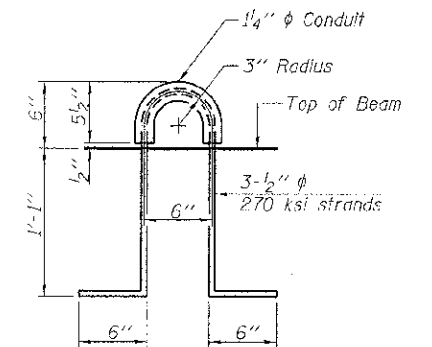
BAR S₁(E)



BAR U(E)



BAR U₁(E)



LIFTING LOOP DETAIL

BILL OF MATERIAL

Precast Prestressed Conc. Deck Bms. (17" depth)	Sq. Ft.	2,352
-------------------------------------------------	---------	-------

NOTES

- Prestressing steel shall be uncoated high strength, low relaxation 7-wire strand, Grade 270. The nominal diameter shall be 1/2" and the nominal cross-sectional area shall be 0.153 sq. in.
- The 1" rods in the transverse tie assembly shall be tightened to a snug fit and the threads set. Pockets on exterior faces of bridge shall be filled with grout after transverse tie assembly is in place.
- Reinforcement bars shall conform to ASTM A 706, Grade 60. (See Special Provisions).
- Two 1/8" fabric adjusting shims of the dimensions of the exterior bearing pad shall be provided for each bearing pad location.
- A minimum 2 1/2" diameter lifting pin shall be used to engage the lifting loops during handling.
- Corrosion inhibitor, per Article 1020.05(b)(12) and 1021.07 of the Standard Specifications, shall be used in the concrete for precast prestressed concrete deck beams.
- Compressive strength of prestressed concrete, f'c, shall be 6000 psi.
- Compressive strength of prestressed concrete at release, f'ci, shall be 5000 psi.
- All bars shall be epoxy coated.

PD-1748-0D

7-1-10

FILE NAME = 2190171-sh1-br.dgn	USER NAME =	DESIGNED - A.S.L.	REVISED -	STATE OF ILLINOIS MOULTRIE COUNTY HIGHWAY DEPARTMENT	17" x 48" PPC DECK BEAM DETAILS STRUCTURE NO. 070-4443	T.R.	SECTION	COUNTY	TOTAL SHEETS	SHEET NO.
HAMPTON, LENZINI AND RENWICK, INC.		CHECKED - S.W.M.	REVISED -			19	C9-04131-00-BR	MOULTRIE	25	18
1305 STYLIANOU DRIVE, SUITE 201 CHICAGO, ILLINOIS 60631	PLOT SCALE =	DRAWN - D.A.B.	REVISED -			LOVINGTON ROAD DISTRICT	CONTRACT NO. 95697			
ILLINOIS PROFESSIONAL DESIGN FIRM 13 / P.E. / S.E. / C.E.P.	PLOT DATE = 10/30/2012	CHECKED - S.W.M.	REVISED -			SHEET NO. 3 OF 10 SHEETS		ILLINOIS FED. AID PROJECT		