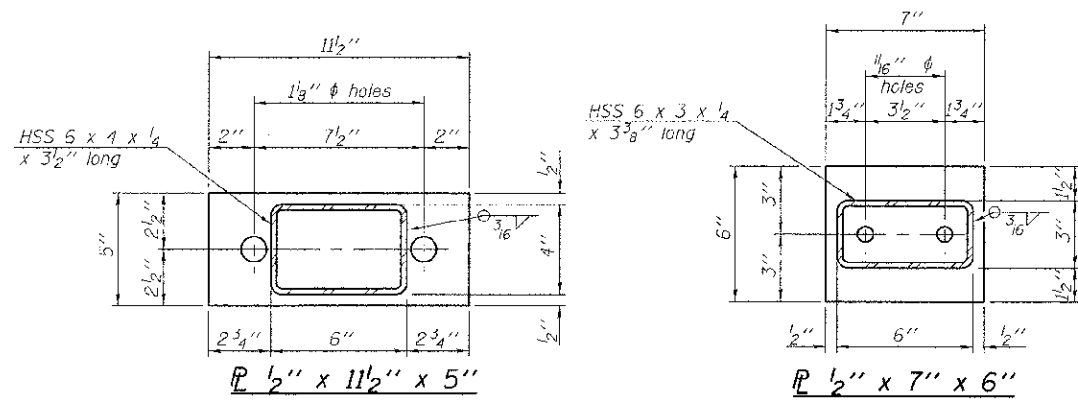
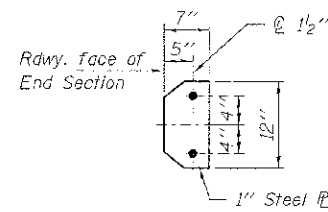


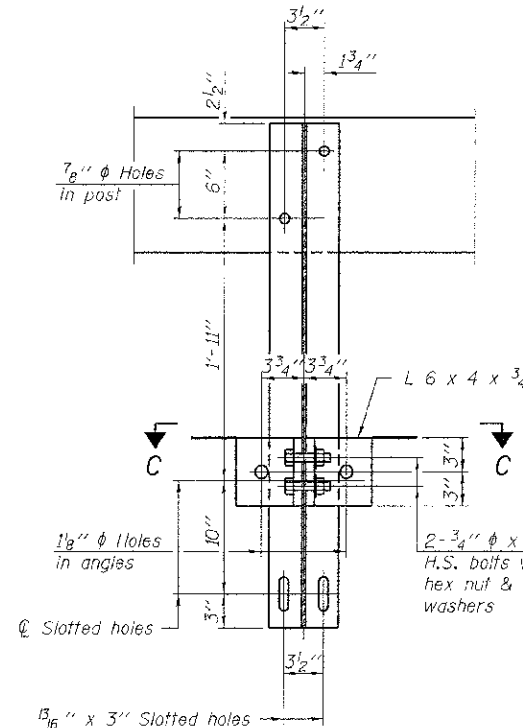
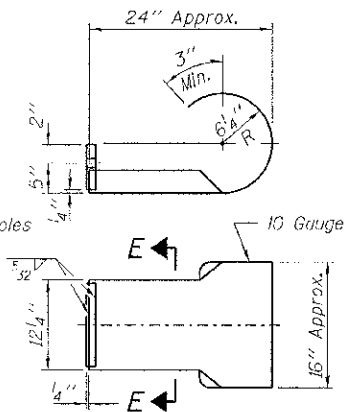
**VIEW A-A
ROUND HEAD BOLT**



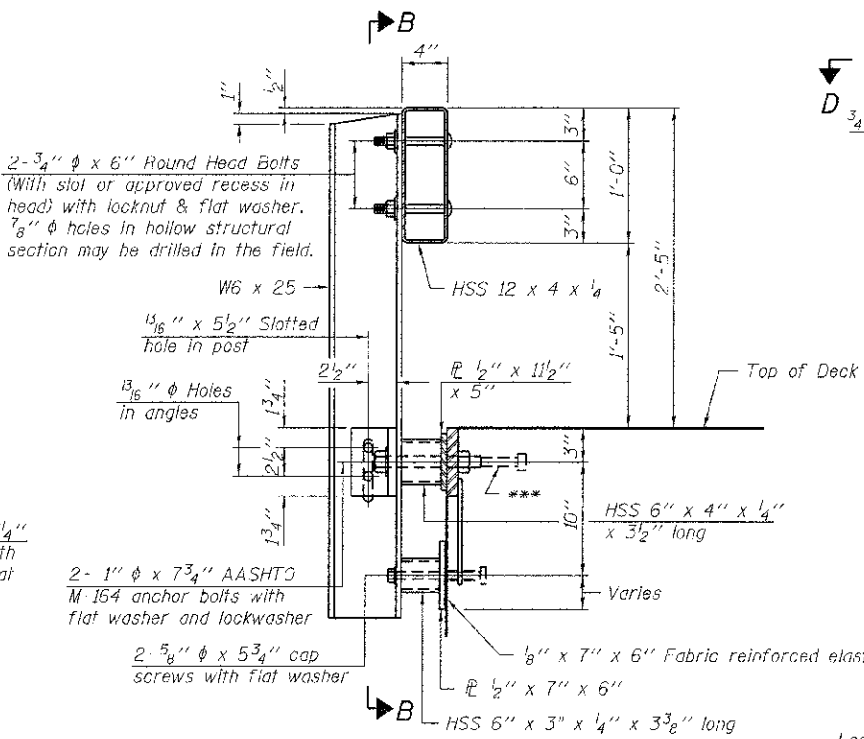
Note: Cost of curled end sections shall be included with the Steel Railing. (4 Required)



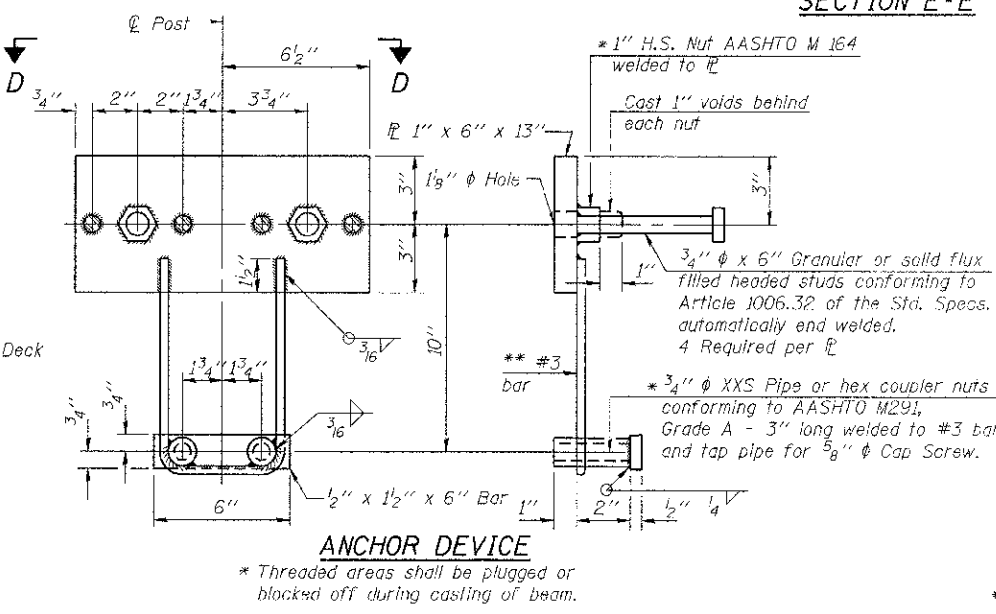
**SECTION E-E
CURLED END SECTION DETAILS**



SECTION B-B

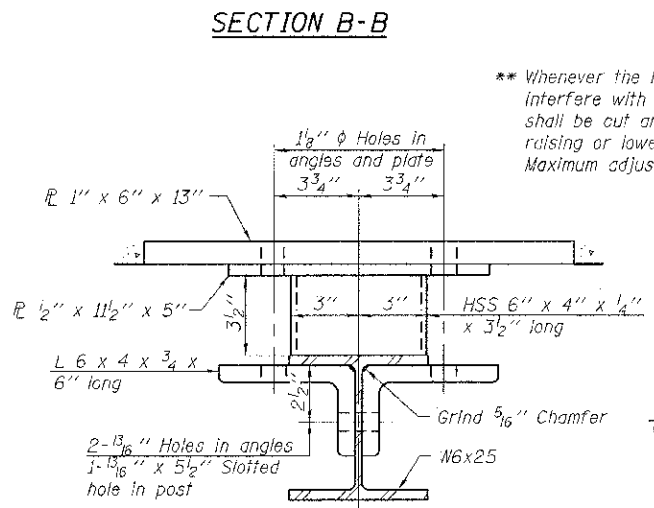


SECTION AT RAILING POST

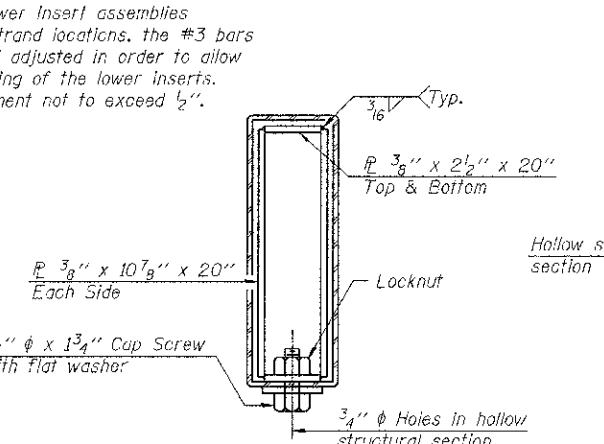


ANCHOR DEVICE

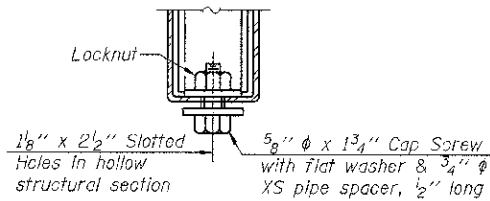
Notes:
All field drilled holes shall be coated with an approved zinc rich paint before erection.
For multi-span bridges, sufficient 1/4 inch x 6 inch x 1-2 inch galvanized steel shims shall be provided to align rail between adjacent spans. Cost included with Steel Railing, Type S-1.
All steel rail elements shall be galvanized according to Article 509.05 of the Standard Specifications.
*** The studs of the anchor devices shall be placed below the top reinforcement bars and the outermost longitudinal reinforcement bar shall be placed directly above the studs of the rail post anchor device.



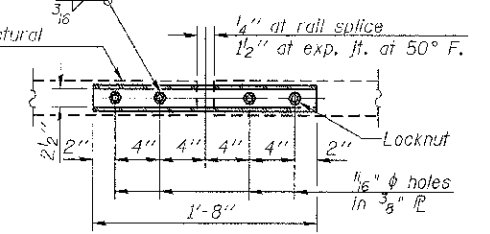
SECTION C-C



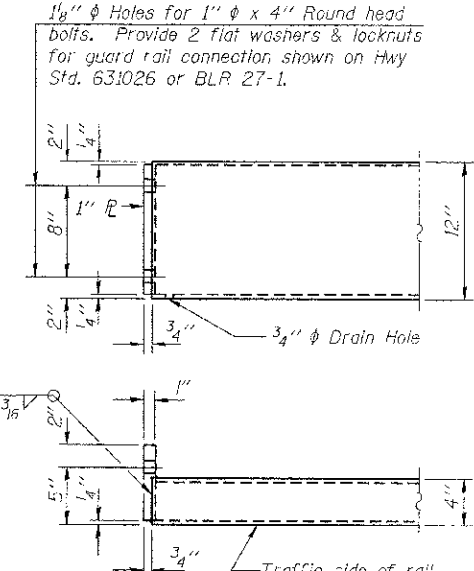
SECTIONS AT RAIL SPLICE



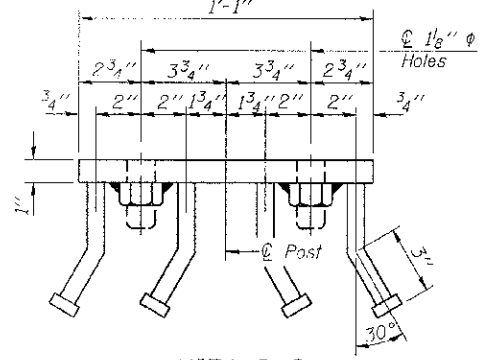
**RAIL SPLICE CONNECTION
AT EXPANSION JT.**



**PLAN-BOTT. SPLICE RAIL
TYPICAL**



END OF RAIL DETAILS



VIEW D-D

BILL OF MATERIAL

Item	Unit	Quantity
Steel Railing, Type S-1	Foot	166

R-23A 7-1-10 (10'-9" Maximum Post Spacing)

FILE NAME = 09R171-rt-bridge.dgn
 USER NAME =
 HAMPTON, LENZINI AND RENWICK, INC.
 3010 STEVENSON DRIVE, SUITE 201
 FORT BELLEVILLE, ILLINOIS 62239
 ILLINOIS PROFESSIONAL DESIGN FIRM
 L37/P2/SE CORP. 18-00089

DESIGNED - A.S.L.
 CHECKED - S.W.M.
 DRAWN - D.A.B.
 CHECKED - S.W.M.
 REVISED -
 REVISED -
 REVISED -
 REVISED -

STATE OF ILLINOIS
 MOULTRIE COUNTY HIGHWAY DEPARTMENT

STEEL RAILING, TYPE S-1
 STRUCTURE NO. 070-4443
 SHEET NO. 5 OF 10 SHEETS

T.R.	SECTION	COUNTY	TOTAL SHEETS	SHEET NO.
19	09-04131-00-BR	MOULTRIE	25	20
LOVINGTON ROAD DISTRICT				CONTRACT NO. 95697
ILLINOIS FED. AID PROJECT				