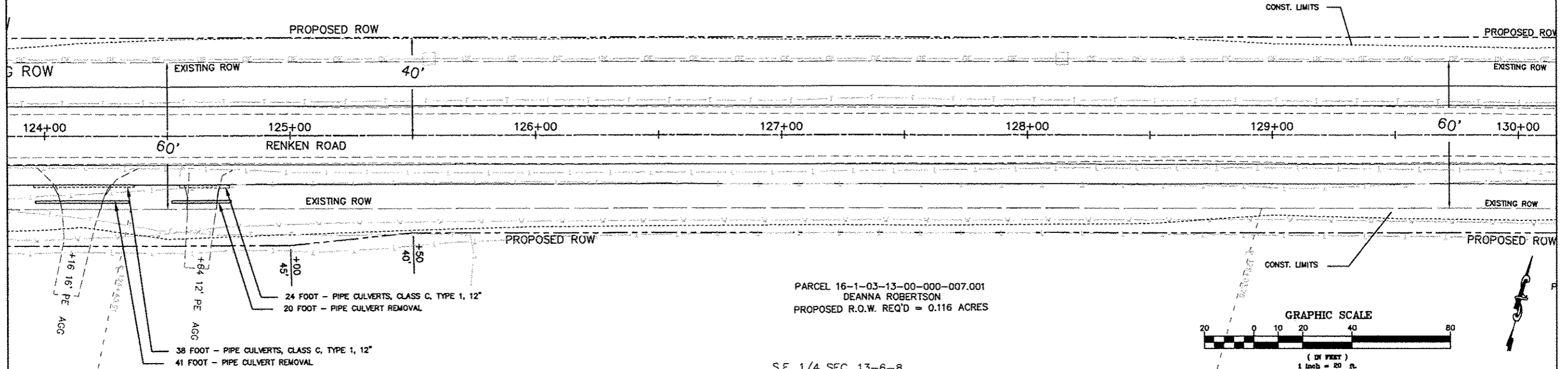
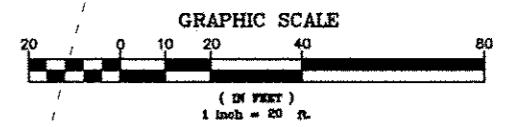


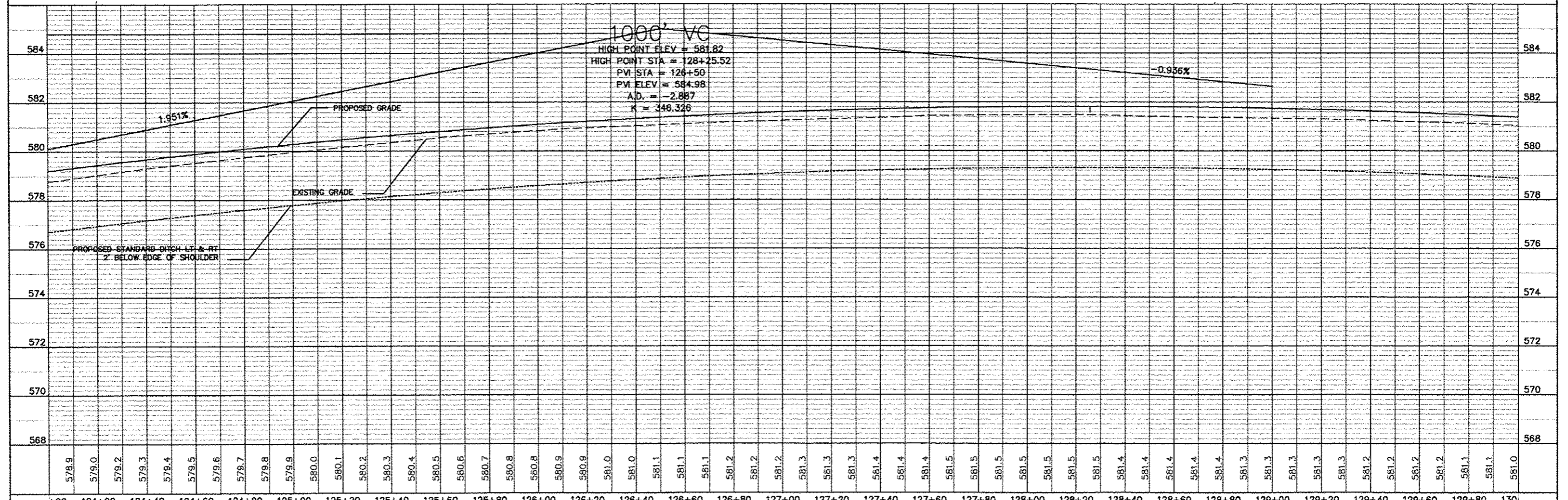
PARCEL 16-1-03-13-00-000-007
HILDA L. MEYER



PARCEL 16-1-03-13-00-000-007.001
DEANNA ROBERTSON
PROPOSED R.O.W. REQ'D = 0.116 ACRES



S.E. 1/4 SEC. 13-6-8



STATE OF ILLINOIS
DEPARTMENT OF TRANSPORTATION

PLAN & PROFILE

SCALE: 1" = 20' SHEET NO. 9 OF 14 SHEETS STA 124+00 TO STA 130+00

ROUTE NO. EAS 2733	SECTION 03-00053-01-WR	COUNTY MADISON	TOTAL SHEETS 145	SHEET NO. 26
CONTRACT 97509				