

## INDEX OF SHEETS

1	TITLE SHEET
2	INDEX OF SHEETS, GENERAL NOTES AND HIGHWAY STANDARDS
3-10A	SUMMARY OF QUANTITIES
11-12	TYPICAL SECTIONS
13	REMOVAL PLAN
14	ROADWAY PLAN & PROFILE
15	INTERSECTION DETAILS
16-17	PROPOSED ADA RAMP
18	MAINTENANCE OF TRAFFIC TYPICAL SECTIONS
19	MAINTENANCE OF TRAFFIC STAGE 1
20	MAINTENANCE OF TRAFFIC - STAGE 1 SERVICE RD DETOUR
21	MAINTENANCE OF TRAFFIC STAGE 2
22	MAINTENANCE OF TRAFFIC - STAGE 2 SERVICE RD DETOUR
23	PLAT OF HIGHWAYS
24	PAVEMENT MARKING & LANDSCAPING PLANS
25-38	TRAFFIC SIGNAL PLANS
39-64	STRUCTURAL PLANS SN 016-2544
65-67	CROSS SECTIONS
68	BD-32 BUTT JOINT AND HMA TAPER
69	TC-10 TRAFFIC CONTROL AND PROTECTION FOR SIDE ROADS, INTERSECTIONS, AND DRIVEWAYS
70	TC-11 RAISED REFLECTIVE PAVEMENT MARKER (SNOW-PLOW RESISTANT)
71	TC-13 DISTRICT ONE TYPICAL PAVEMENT MARKINGS
72	TC-14 TRAFFIC CONTROL AND PROTECTION AT TURN BAYS (TO REMAIN OPEN TO TRAFFIC)
73	TC-22 ARTERIAL ROAD INFORMATION SIGN
74	TC-26 DRIVEWAY ENTRANCE SIGNING

## HIGHWAY STANDARDS

STANDARD NO.	DESCRIPTION
000001-07	STANDARD SYMBOLS, ABBREVIATIONS AND PATTERNS
280001-07	TEMPORARY EROSION CONTROL SYSTEMS
420406	PAVEMENT CONNECTOR (HMA) FOR BRIDGE APPROACH SLAB
601001-05	CONCRETE CURB TYPE B AND COMBINATION CONCRETE CURB AND GUTTER
635001-02	DELINEATORS
643001-02	SAND MODULE IMPACT ATTENUATORS
666001-01	RIGHT-OF-WAY MARKERS
667101-02	PERMANENT SURVEY MARKERS
701001-02	OFF-ROAD OPERATIONS, 2L, 2W, MORE THAN 15' AWAY
701006-05	OFF-ROAD OPERATIONS, 2L, 2W, 15' TO 24" FROM PAVEMENT EDGE
701011-04	OFF-ROAD MOVING OPERATIONS, 2L, 2W, DAY ONLY
701101-05	OFF-ROAD OPERATIONS, MULTILANE, 15' TO 24" FROM PAVEMENT EDGE
701106-02	OFF-ROAD OPERATIONS, MULTILANE, MORE THAN 15' AWAY
701301-04	LANE CLOSURE, 2L, 2W, SHORT TIME OPERATIONS
701311-03	LANE CLOSURE, 2L, 2W, MOVING OPERATIONS - DAY ONLY
701427-05	LANE CLOSURE, MULTILANE, INTERMITTENT OR MOVING OPERATION, FOR SPEEDS <= 40 MPH
701602-10	URBAN LANE CLOSURE, MULTILANE, 2W WITH BIDIRECTIONAL LEFT TURN LANE
701606-10	URBAN SINGLE LANE CLOSURE, MULTILANE, 2W WITH MOUNTABLE MEDIAN
701801-06	SIDEWALK, CORNER OR CROSSWALK CLOSURE
701701-10	URBAN LANE CLOSURE, MULTILANE INTERSECTION
701901-08	TRAFFIC CONTROL DEVICES
704001-08	TEMPORARY CONCRETE BARRIER
720001-01	SIGN PANEL MOUNTING DETAILS
720006-04	SIGN PANEL ERECTION DETAILS
720011-01	METAL POSTS FOR SIGNS, MARKERS AND DELINEATORS
725001-01	OBJECT AND TERMINAL MARKERS
728001-01	TELESCOPING STEEL SIGN SUPPORT
729001-01	APPLICATIONS OF TYPES A AND B METAL POSTS (FOR SIGNS & MARKERS)
731001-01	BASE FOR TELESCOPING STEEL SIGN SUPPORT
782006	GUARDRAIL AND BARRIER WALL REFLECTOR MOUNTING DETAILS
664001-02	CHAIN LINK FENCE



## GENERAL NOTES:

- BEFORE STARTING ANY EXCAVATION, THE CONTRACTOR SHALL CALL J.U.L.I.E. AT (800) 892-0123 OR 811 FOR FIELD LOCATIONS OF BURIED ELECTRIC, TELEPHONE, AND GAS UTILITIES (48 HOUR NOTICE IS REQUIRED).
- THE CONTRACTOR WILL NOT BE ALLOWED TO SET UP A YARD OR FIELD OFFICE ON STATE RIGHT-OF-WAY OR PROPERTY WITHOUT PRIOR WRITTEN PERMISSION FROM THE ENGINEER.
- THE CONTRACTOR SHALL COORDINATE CONSTRUCTION ACTIVITIES WITH AFFECTED UTILITY COMPANIES AND THE VILLAGE OF SUMMIT AND BEDFORD PARK.
- 10 FOOT TRANSITIONS SHALL BE USED TO MATCH PROPOSED CURB AND GUTTER AND MEDIAN ITEMS OF WORK TO EXISTING CURB AND GUTTER AND MEDIAN ITEMS IN THE FIELD, UNLESS OTHERWISE SHOWN. THE TRANSITIONS SHALL BE PAID FOR AT THE CONTRACT UNIT PRICE FOR THE PROPOSED LARGER ITEM OF SPECIFIED WORK.
- THE RESIDENT ENGINEER SHALL CONTACT THE ARTERIAL TRAFFIC FIELD ENGINEER, CORY JUCIUS AT CORY.JUCIUS@ILLINOIS.GOV A MINIMUM OF TWO (2) WEEKS PRIOR TO PLACEMENT OF PERMANENT PAVEMENT MARKINGS.
- BEFORE BEGINNING ANY WORK THE CONTRACTOR SHALL RETAIN AND RECORD FOR FUTURE REFERENCE, ALL EXISTING PAVEMENT MARKING LINES (AND RAISED REFLECTIVE PAVEMENT MARKERS) IN ORDER THAT THESE LOCATIONS CAN BE RE-ESTABLISHED FOR STRIPING. EXACT LOCATIONS OF ALL PAVEMENT MARKINGS SHALL BE AS DIRECTED BY THE ENGINEER.
- FOR WORK OUTSIDE THE LIMITS OF THE STRUCTURE, ALL REFERENCES IN THE HIGHWAY STANDARDS AND STANDARD SPECIFICATIONS FOR REINFORCEMENT, DOWEL BARS AND TIE BARS IN PAVEMENT, SHOULDERS, CURB, GUTTER, COMBINATION CURB AND GUTTER AND MEDIAN SHALL BE EPOXY COATED, UNLESS NOTED ON THE PLAN.
- THE CONTRACTOR SHALL MAINTAIN ALL ROADWAYS OPEN TO TRAFFIC AS SHOWN ON THE MAINTENANCE OF TRAFFIC PLANS.
- THE CONTRACTOR SHALL CONTACT THE IDOT DISTRICT 1 TRAFFIC CONTROL SUPERVISOR, AT 847-705-4470 A MINIMUM OF 72 HOURS IN ADVANCE OF BEGINNING WORK.
- THE CONTRACTOR SHALL USE CARE IN GRADING OR EXCAVATING NEAR ANY AND ALL EXISTING ITEMS THAT WILL NOT BE REMOVED. ANY DAMAGE DONE TO EXISTING ITEMS BY THE CONTRACTOR SHALL BE REPAIRED OR REPLACED TO THE SATISFACTION OF THE ENGINEER AT THE CONTRACTOR'S OWN EXPENSE.
- THE CONTRACTOR SHALL BE RESPONSIBLE FOR THE PROTECTION OF ALL UNDERGROUND OR SURFACE UTILITIES EVEN THOUGH THEY MAY NOT BE SHOWN ON THE PLANS. ANY UTILITY THAT IS DAMAGED DURING CONSTRUCTION SHALL BE REPAIRED OR REPLACED TO THE SATISFACTION OF THE ENGINEER. THIS WORK SHALL BE AT THE CONTRACTOR'S EXPENSE.
- THE CONTRACTOR SHALL MAINTAIN THE SURFACE DRAINAGE OF ALL ROADWAYS DURING CONSTRUCTION OF THIS PROJECT. WHEN EXISTING DRAINAGE FACILITIES ARE DISTURBED, THE CONTRACTOR SHALL PROVIDE AND MAINTAIN TEMPORARY OUTLETS AND CONNECTIONS FOR ALL PRIVATE OR PUBLIC DRAINS, SEWERS, INLETS, AND CATCH BASINS. THE CONTRACTOR SHALL PROVIDE FACILITIES TO TAKE IN ALL STORM WATER, WHICH WILL BE RECEIVED BY THESE DRAINS AND SEWERS AND DISCHARGE SAME. THE CONTRACTOR SHALL PROVIDE AND MAINTAIN A TEMPORARY OUTLET AND BE PREPARED AT ALL TIMES TO DISPOSE OF THE WATER RECEIVED FROM ALL THESE TEMPORARY CONNECTIONS UNTIL INSTALLATION IS COMPLETE, INCLUDING PAVEMENT. THIS WORK SHALL NOT BE PAID FOR DIRECTLY BUT SHALL BE CONSIDERED INCLUDED IN THE CONTRACT. COORDINATION WITH ALL AGENCIES INVOLVED IS REQUIRED.
- DURING CONSTRUCTION OPERATIONS, IF ANY LOOSE MATERIAL IS DEPOSITED IN THE FLOW LINE OF DRAINAGE STRUCTURES SUCH THAT THE NATURAL FLOW OF WATER IS OBSTRUCTED, THE MATERIAL SHALL BE REMOVED AT THE CLOSE OF EACH WORKING DAY. AT THE CONCLUSION OF CONSTRUCTION OPERATIONS, ALL UTILITY STRUCTURES SHALL BE FREE FROM DUST AND DEBRIS. THE WORK SPECIFIED ABOVE WILL NOT BE PAID SEPARATELY BUT SHALL BE INCLUDED IN THE COST OF THE CONTRACT.
- THE ACTUAL NEED FOR REMOVAL AND REPLACEMENT WITH AGGREGATE SUBGRADE IMPROVEMENT SHOULD BE DETERMINED IN THE FIELD AT THE TIME OF CONSTRUCTION BY THE GEOTECHNICAL ENGINEER OR SOILS INSPECTOR. ALL POTENTIALLY UNSTABLE SOILS SHOULD BE TESTED WITH A CONE PENETROMETER AND TREATED IN ACCORDANCE WITH ARTICLE 301.04 OF THE STANDARD SPECIFICATIONS AND THE UNDERCUT GUIDELINES IN THE IDOT SUBGRADE STABILITY MANUAL. ANY MATERIAL NOT NEEDED FOR UNDERCUT REPLACEMENT AT THE TIME OF CONSTRUCTION SHOULD BE DELETED FROM THE CONTRACT WITH NO EXTRA COMPENSATION TO THE CONTRACTOR.
- WHEN THE MILLED PAVEMENT IS OPEN TO TRAFFIC THE MAXIMUM GRADE DIFFERENTIAL BETWEEN PASSES OF THE MILLING MACHINE SHALL NOT EXCEED 1 1/2 INCHES (40MM) WHERE THE SPEED LIMIT IS 40 MPH (80 KM/HR) OR LESS AND 1 INCH (25 MM) WHERE THE SPEED LIMIT IS GREATER THAN 45 MPH (80KM/HR). WITH WRITTEN APPROVAL FROM THE ENGINEER, A MAXIMUM GRADE DIFFERENTIAL OF 3 INCHES (75MM) MAY BE ALLOWED IF THE EDGE OF THE MILLING IS SLOPED A MINIMUM 1:3 (V:H).

## GENERAL NOTES (CONT.):

- IT SHALL BE THE CONTRACTOR'S RESPONSIBILITY TO VERIFY ALL DIMENSIONS AND CONDITIONS EXISTING IN THE FIELD PRIOR TO CONSTRUCTION AND ORDERING OF MATERIALS.
- THE CONTRACTOR SHALL BE REQUIRED TO PROVIDE ACCESS TO ABUTTING PROPERTY AT ALL TIMES DURING THE CONSTRUCTION OF THE PROJECT.
- DO NOT SCALE PLANS FOR CONSTRUCTION PURPOSES.
- DOUBLE LANE MARKERS ARE TO BE USED AS SHOWN ON THE DISTRICT ONE DETAIL "TYPICAL APPLICATIONS - RAISED REFLECTIVE PAVEMENT MARKERS (SNOW PLOW RESISTANT)".
- THE CONTRACTOR SHALL TAKE WHATEVER PRECAUTIONS WHICH MAY BE NECESSARY TO PROTECT THE PROPERTY OF THE VARIOUS PUBLIC UTILITIES WHICH MAY BE LOCATED UNDERGROUND OR ABOVE GROUND, AT OR ADJACENT TO THE SITE OF THIS IMPROVEMENT. THE CONTRACTOR WILL BE REQUIRED TO REPAIR OR REPLACE AT HIS/HER OWN EXPENSE, OR BEAR THE COST, TO REPAIR OR REPLACE, ANY PUBLIC UTILITY PROPERTY WHICH HAS BEEN DAMAGED THROUGH HIS/HER EFFORTS.
- OVERHEAD WIRES ARE NOT INSULATED AND EXTRA CAUTION AND VIGILANCE SHALL BE ADHERED TO WHEN WORKING NEARBY. CONTRACTORS SHALL ALWAYS USE CAUTION WHILE OPERATING CRANES AND OR OTHER EQUIPMENT NEAR OVERHEAD ELECTRICAL FACILITIES. THE OCCUPATIONAL HEALTH AND SAFETY ORGANIZATION (OSHA) RULES REQUIRE THAT WORKERS AND EQUIPMENT SHALL NOT APPROACH WITHIN TEN (10) FEET AWAY OF OVERHEAD ELECTRICAL EQUIPMENT WITHOUT APPROPRIATE SUPPLEMENTAL PROTECTION. BE CERTAIN THAT ALL WORKERS ON THIS PROJECT HAVE BEEN FULLY TRAINED AND CONFORM TO OSHA RULES AND OTHER APPLICABLE GUIDELINES REGARDING WORKING SAFELY AROUND ELECTRICAL POWER LINES.
- WHEN ARTIFICIAL LIGHTING IS UTILIZED IN NIGHT OPERATIONS, THE CONTRACTOR SHALL EXERCISE THE UTMOST PRECAUTIONS IN PREVENTING ADVERSE VISIBILITY TO THE MOTORING PUBLIC AND ADJOINING RESIDENTIAL AREA.
- PLAN DIMENSIONS AND DETAILS RELATIVE TO EXISTING PLANS ARE SUBJECT TO ROUTINE VARIATION. THE CONTRACTOR SHALL FIELD VERIFY EXISTING DIMENSIONS AND DETAILS AFFECTING NEW CONSTRUCTION OR ORDERING MATERIALS. SUCH VARIATION SHALL NOT CAUSE FOR ADDITIONAL COMPENSATION FOR A CHANGE IN THE SCOPE OF THE WORK, HOWEVER, THE CONTRACTOR WILL BE PAID FOR QUANTITY ACTUALLY FURNISHED BASED AT THE UNIT PRICE BID FOR THE WORK.
- BUTT JOINTS WILL BE INSTALLED AT THE ENDS OF ALL RESURFACING (WHERE RESURFACING MEETS EXISTING PAVEMENT) IN ACCORDANCE WITH DISTRICT ONE STANDARD BD32 "BUTT JOINT AND HMA TAPER DETAILS," UNLESS OTHERWISE SPECIFIED.
- THE CONTRACTOR SHALL CONTACT THE ROADSIDE DEVELOPMENT UNIT AT (847)705-4171 AT LEAST 72 HOURS PRIOR TO HERBICIDE TREATMENT WORK.
- ONE CHANGEABLE MESSAGE SIGN SHALL BE INSTALLED AT EACH END OF THE PROJECT. CONTRACTOR SHALL OBTAIN APPROVAL FROM THE ENGINEER BEFORE PLACEMENT OF THE CHANGEABLE MESSAGE SIGNS.

## COMMITMENTS

NONE

FILE NAME = I:\18383 P1B 182 84\020311 - IL RTE 171 over Ingreation RRV\CAD\CADD\_Sheets\0162F30-ah-t-gmmotstdp



USER NAME = ceetbar	DESIGNED - ZJT	REVISED -
	DRAWN - ZJT	REVISED -
PLOT SCALE = 100,0000' / 1in.	CHECKED - CEI	REVISED -
PLOT DATE = 10/21/2018	DATE -	REVISED -

**STATE OF ILLINOIS  
DEPARTMENT OF TRANSPORTATION**

<b>ILLINOIS ROUTE 171 OVER INGREDION RAILROAD</b>			
<b>INDEX OF SHEETS, GENERAL NOTES, AND HIGHWAY STANDARDS</b>			
SCALE:	SHEET	OF	SHEETS
	STA.	TO	STA.

F.A.J. RTE.	SECTION	COUNTY	TOTAL SHEETS	SHEET NO.
3565	46VB-2-BR	COOK	74	2
<b>CONTRACT NO. 62F30</b>				
ILLINOIS FED. AID PROJECT				

CODE NO.	ITEM	UNIT	TOTAL QUANTITY	CONSTRUCTION CODE	
				80% FED / 20% STATE ROADWAY	80% FED / 20% STATE BRIDGE
				0013	0013
				URBAN	S.N. 016-2544
* 81400100	HANDHOLE	EACH	2	2	0
* 85000200	MAINTENANCE OF EXISTING TRAFFIC SIGNAL INSTALLATION	EACH	2	2	0
* 87300925	ELECTRIC CABLE IN CONDUIT, TRACER, NO. 14 1C	FOOT	1600	1600	0
* 87301215	ELECTRIC CABLE IN CONDUIT, SIGNAL NO. 14 2C	FOOT	358	358	0
* 87301225	ELECTRIC CABLE IN CONDUIT, SIGNAL NO. 14 3C	FOOT	372	372	0
* 87301900	ELECTRIC CABLE IN CONDUIT, EQUIPMENT GROUNDING CONDUCTOR, NO. 6 1C	FOOT	28	28	0
* 87502440	TRAFFIC SIGNAL POST, GALVANIZED STEEL 10 FT.	EACH	1	1	0
* 87502500	TRAFFIC SIGNAL POST, GALVANIZED STEEL 16 FT.	EACH	1	1	0
* 87502520	TRAFFIC SIGNAL POST, GALVANIZED STEEL 18 FT.	EACH	1	1	0
87800100	CONCRETE FOUNDATION, TYPE A	FOOT	8	8	0
* 87900200	DRILL EXISTING HANDHOLE	EACH	4	4	0
* 88102710	PEDESTRIAN SIGNAL HEAD, LED, 1-FACE, BRACKET MOUNTED	EACH	2	2	0
* 88600100	DETECTOR LOOP, TYPE I	FOOT	64	64	0
* 88800100	PEDESTRIAN PUSH-BUTTON	EACH	2	2	0
* 89500100	RELOCATE EXISTING SIGNAL HEAD	EACH	1	1	0
* 89500200	RELOCATE EXISTING PEDESTRIAN SIGNAL HEAD	EACH	1	1	0

1

1

1

LEGEND:  
\* - DENOTES SPECIALTY ITEM

FILE NAME = I:\18303\_PTB\_182\_84\18303\_11 - IL RTE 171 Over Ingradation RRV\CAOV\ADD\_Sheets\0162F30-ht-500.dgn



USER NAME = oseiber	DESIGNED - ZJT	REVISED -
	DRAWN - ZJT	REVISED -
PLOT SCALE = 2.0000' / 1" =	CHECKED - CEI	REVISED -
PLOT DATE = 10/19/2018	DATE -	REVISED -

STATE OF ILLINOIS  
DEPARTMENT OF TRANSPORTATION

ILLINOIS ROUTE 171 OVER INGREDION RAILROAD  
SUMMARY OF QUANTITIES

SCALE: SHEET OF SHEETS STA. TO STA.

F.A.U. RTE.	SECTION	COUNTY	TOTAL SHEETS	SHEET NO.
3565	46VB-2-BR	COOK	74	8
CONTRACT NO. 62F30				
ILLINOIS FED. AID PROJECT				

CODE NO.	ITEM	UNIT	TOTAL QUANTITY	CONSTRUCTION CODE	
				80% FED / 20% STATE ROADWAY	80% FED / 20% STATE BRIDGE
				0013 URBAN	0013 S.N. 016-2544
* 89500400	RELOCATE EXISTING PEDESTRIAN PUSH-BUTTON	EACH	1	1	0
89502200	MODIFY EXISTING CONTROLLER	EACH	1	1	
* 89502300	REMOVE ELECTRIC CABLE FROM CONDUIT	FOOT	3174	3174	0
* 89502350	REMOVE AND REINSTALL ELECTRIC CABLE FROM CONDUIT	FOOT	30	30	0
* 89502375	REMOVE EXISTING TRAFFIC SIGNAL EQUIPMENT	EACH	1	1	0
* 89502380	REMOVE EXISTING HANDHOLE	EACH	2	2	0
89502385	REMOVE EXISTING CONCRETE FOUNDATION	EACH	1	1	0
* X0320100	GROOVING FOR RECESSED PAVEMENT MARKING 10"	FOOT	153	153	0
* X0320110	PREFORMED PLASTIC PAVEMENT MARKING, TYPE B - LINE 9"	FOOT	153	153	0
* X0324599	ROD AND CLEAN EXISTING CONDUIT	FOOT	500	500	0
X0325222	WEED CONTROL, BASAL TREATMENT	GALLON	2.5	2.5	0
X0327979	PAVEMENT MARKING REMOVAL - GRINDING	SQ FT	984	984	0
X0327980	PAVEMENT MARKING REMOVAL - WATER BLASTING	SQ FT	123	123	0
X1400201	RADAR VEHICLE DETECTION SYSTEM, SINGLE APPROACH, STOP BAR	EACH	2	2	
* X2700003	GROOVING FOR RECESSED PAVEMENT MARKING 8"	FOOT	395	395	0
* X2700004	PREFORMED PLASTIC PAVEMENT MARKING, TYPE B - LINE 7"	FOOT	395	395	0

LEGEND:  
\* - DENOTES SPECIALTY ITEM

FILE NAME = I:\18303\_PTB\_182\_84\18303\_11 - IL\_Rte\_171\_Over\_Ingration\_RR\CADD\CADD\_Sheets\0162F30-ht-500.dgn



USER NAME = aseiber	DESIGNED - ZJT	REVISED -
	DRAWN - ZJT	REVISED -
PLOT SCALE = 2.0000' / 1" =	CHECKED - CEI	REVISED -
PLOT DATE = 10/19/2018	DATE -	REVISED -

STATE OF ILLINOIS  
DEPARTMENT OF TRANSPORTATION

ILLINOIS ROUTE 171 OVER INGREDION RAILROAD  
SUMMARY OF QUANTITIES

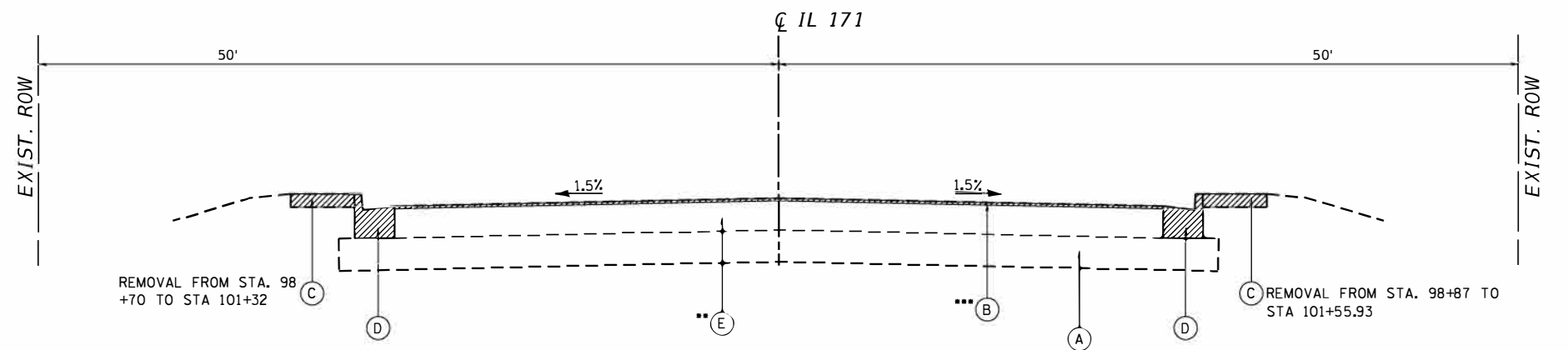
SCALE: SHEET OF SHEETS STA. TO STA.

F.A.U. RTE.	SECTION	COUNTY	TOTAL SHEETS	SHEET NO.
3565	46VB-2-BR	COOK	74	9
CONTRACT NO. 62F30				
ILLINOIS FED. AID PROJECT				

### HOT-MIX ASPHALT MIXTURE REQUIREMENTS

MIXTURE TYPE	AIR VOIDS	OMP
<b>RESURFACING:</b>		
POLYMERIZED HMA SURFACE COURSE, SMA, 9.5 N80	3.5% @ 80 GYR.	QC/OA
POLYMERIZED HMA BINDER COURSE, IL-19.0, N90 (2 1/4" MIN.)	4% @ 90 GYR.	QC/OA
<b>PAVEMENT CONNECTOR:</b>		
POLYMERIZED HMA SURFACE COURSE, SMA, 9.5 N80	3.5% @ 80 GYR.	QC/OA
POLYMERIZED HMA BINDER COURSE, IL-19.0, N90 (2 1/4" MIN.)	4% @ 90 GYR.	QC/OA
<b>TEMPORARY PAVEMENT VAR DP:</b>		
HMA SURFACE COURSE, MIX D, N70 (IL-9.5 mm)	4% @ 70 GYR.	QC/OA
<b>TEMPORARY PAVEMENT 10:</b>		
HMA SURFACE COURSE, MIX "D", N70 (IL 9.5 mm), 2"	4% @ 70 GYR.	QC/OA
HMA BINDER COURSE, IL-19.0, N70, 8"	4% @ 70 GYR.	QC/OA
OMP DESIGNATION: QUALITY CONTROL/QUALITY ASSURANCE (QC/OA); QUALITY CONTROL FOR PERFORMANCE (QCP); PAY FOR PERFORMANCE (PFP)		

- 1) THE UNIT WEIGHT USED TO CALCULATE ALL HMA SURFACE MIXTURE QUANTITIES IS 112 LBS/SOYD/IN
- 2) THE AC TYPE FOR POLYMERIZED HMA MIXES SHALL BE "SBS/SBR PG 76-22" AND FOR NON-POLYMERIZED HMA THE "AC TYPE" SHALL BE "PG 64-22" UNLESS MODIFIED BY DISTRICT ONE SPECIAL PROVISIONS"
- 3) FOR USE OF RECYCLED MATERIALS, SEE SPECIAL PROVISIONS.
- 4) QUALITY MANAGEMENT PROGRAM (OMP) IDENTIFIES THE PARTICULAR QUALITY CONTROL SPECIFICATION THAT APPLIES TO THE HMA MIXTURE.



### EXISTING TYPICAL SECTION

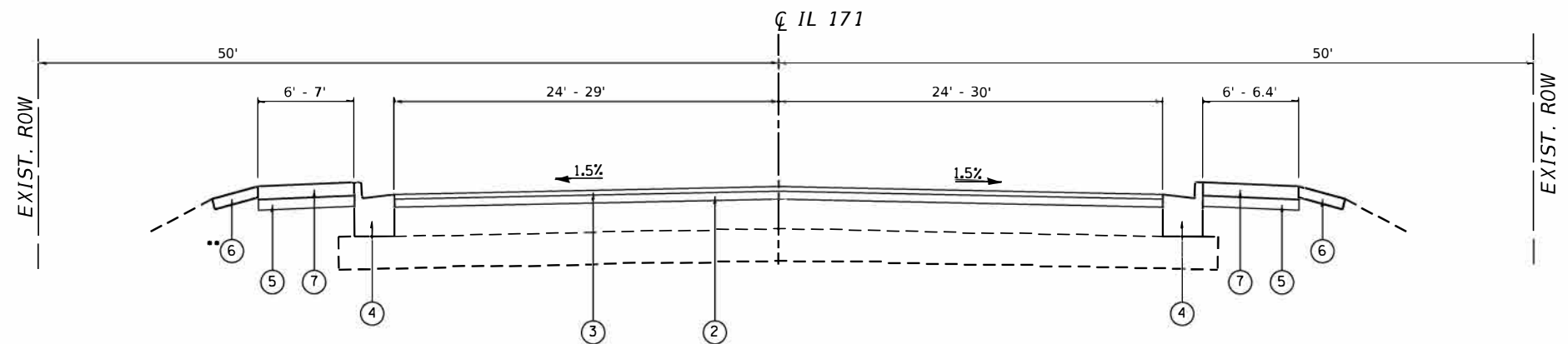
#### ILLINOIS ROUTE 171

- STA. 96+50 - STA 101+55.93
- OMIT STA. 99+48 TO STA. 100+50 FOR REMOVAL OF BRIDGE, BRIDGE APPROACHES AND PAVEMENT CONNECTOR.
- HMA SURFACE REMOVAL OCCURS FROM STA. 96+50 TO 99+48 AND PCC SURFACE REMOVAL OCCURS FROM STA. 100+50 TO STA. 101+55.93. SEE REMOVAL PLAN FOR LIMITS AND DEPTHS OF SURFACE REMOVAL.
- EXISTING HMA PAVMENT OVERLAY OCCURS ONLY FROM STA. 96+50 TO STA. 99+48.

### EXISTING LEGEND:

- (A) EXIST. AGGREGATE SUBGRADE
- (B) EXIST. HMA PAVEMENT OVERLAY, (3' & VAR.)
- (C) EXIST SIDEWALK
- (D) EXIST. 6.24 CURB AND GUTTER
- (E) EXIST. PCC PAVEMENT (9' & VAR.)

TO BE REMOVED



### PROPOSED TYPICAL SECTION

#### ILLINOIS ROUTE 171

- STA. 96+50 - STA 101+55.93
- OMIT STA. 99+48 TO STA. 100+50 FOR BRIDGE, BRIDGE APPROACHES AND PAVEMENT CONNECTOR.
- PROPOSED TOPSOIL FURNISH AND PLACE, 8" OCCURS FROM STA. 96+50 TO STA. 99+41.

### PROPOSED LEGEND:

- (1) PROP. AGG SUBGRADE IMP 12
- (2) PROP. P HMA BC IL19.0 N90 (2 1/4" MIN.)
- (3) PROP. P HMA SC SMA, 9.5, N80, 1 3/4"
- (4) PROP. 6.24 CURB AND GUTTER
- (5) PROP. SUBBASE GRANULAR MATERIAL, TYPE B 8"
- (6) PROP. SODDING, SALT TOLERANT PROP. TOPSOIL FURNISH AND PLACE, 4"
- (7) PROP. PCC CONCRETE SIDEWALK 5 INCH

FILE NAME = I:\10303\_PTB\_182\_84\10303\_11 - IL\_Rte\_171\_Over\_Ingration\_RR\CADD\CADD\_Sheets\0162F30-ht-typ.dwg

**COLLINS ENGINEERS**

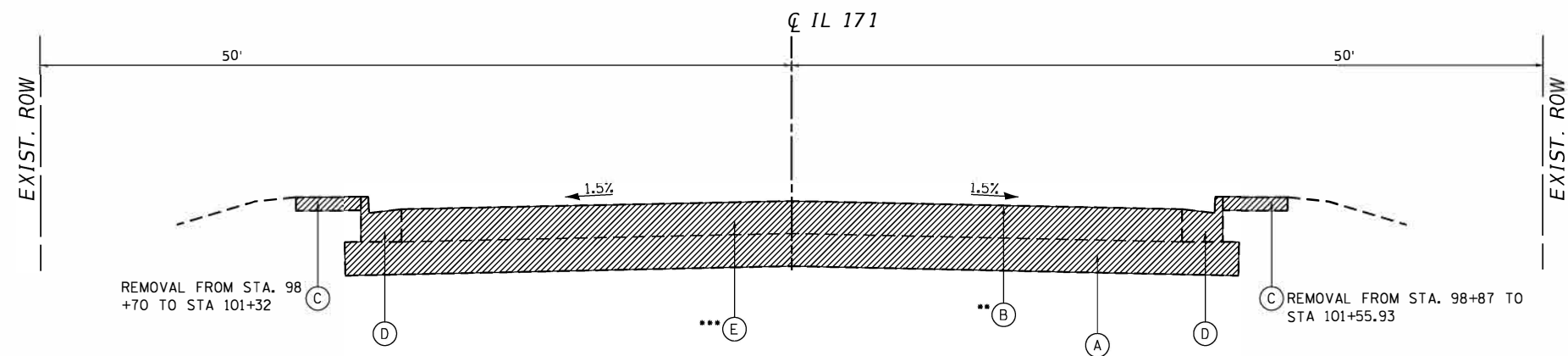
USER NAME = aseiber	DESIGNED - ZJT	REVISED -
	DRAWN - ZJT	REVISED -
PLOT SCALE = 100.0000' / 1in.	CHECKED - CEI	REVISED -
PLOT DATE = 10/19/2018	DATE -	REVISED -

STATE OF ILLINOIS  
DEPARTMENT OF TRANSPORTATION

ILLINOIS ROUTE 171 OVER INGREDION RAILROAD  
TYPICAL SECTIONS

SCALE: SHEET OF SHEETS STA. TO STA.

F.A.U. RTE.	SECTION	COUNTY	TOTAL SHEETS	SHEET NO.
3565	46VB-2-BR	COOK	74	11
CONTRACT NO. 62F30				
ILLINOIS FED. AID PROJECT				



**EXISTING TYPICAL SECTION**

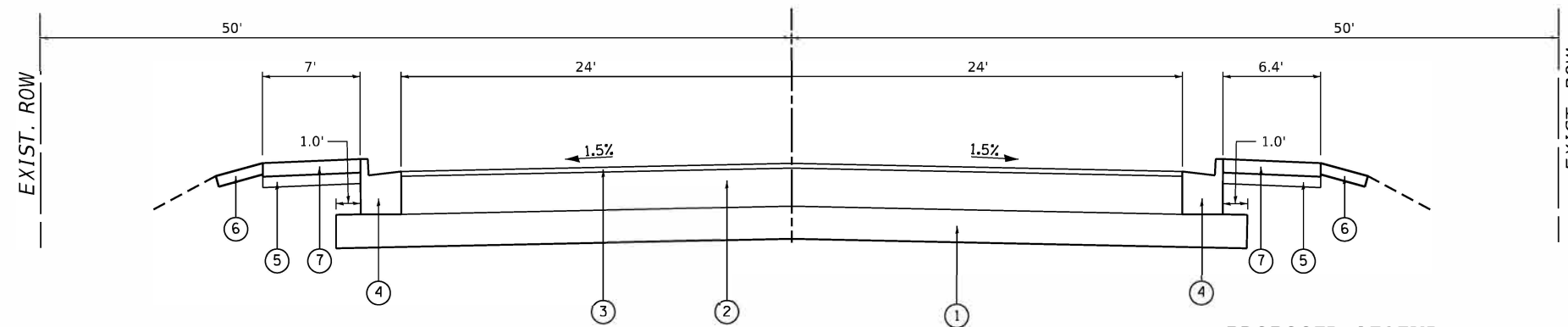
**ILLINOIS ROUTE 171**

- STA. 99+48 - STA 100+50
- OMIT STA. 99+61.5 TO STA. 100+40 FOR REMOVAL OF BRIDGE AND BRIDGE APPROACHES.
- EXISTING HMA PAVEMENT OVERLAY OCCURS ONLY FROM STA. 99+48 TO STA. 99+61.5.
- PAVEMENT REMOVAL OCCURS FROM STA. 99+48 TO STA. 99+61.5 AND STA. 100+40 TO STA. 100+50.

**EXISTING LEGEND:**

- (A) EXIST. AGGREGATE SUBGRADE
- (B) EXIST. HMA PAVEMENT, OVERLAY (3" & VAR.)
- (C) EXIST. SIDEWALK
- (D) EXIST. 6.24 CURB AND GUTTER
- (E) EXIST. PCC PAVEMENT (9" & VAR.)

TO BE REMOVED



**PROPOSED TYPICAL SECTION**

**ILLINOIS ROUTE 171**

- STA. 99+48 - STA 100+50
- OMIT STA. 99+58 TO STA. 100+40 FOR BRIDGE AND BRIDGE APPROACHES.

**PROPOSED LEGEND:**

- (1) PROP. AGG SUBGRADE IMP 12
- (2) PROP. P HMA BC IL19.0 N90 (2 1/4" MIN.)
- (3) PROP. P HMA SC SMA, 9.5, N80, 1 3/4"
- (4) PROP. 6.24 CURB AND GUTTER
- (5) PROP. SUBBASE GRANULAR MATERIAL, TYPE B 8"
- (6) PROP. SODDING, SALT TOLERANT PROP. TOPSOIL FURNISH AND PLACE, 4"
- (7) PROP. PCC CONCRETE SIDEWALK 5 INCH

FILE NAME = I:\18303.PTB 182 84\18303.11 - IL RTE 171 OVER INGREDION RAILROAD.RR\CAD\CADD\_Sheets\0162F30-ah1-tp.dgn

**COLLINS ENGINEERS**

USER: AME = 05/08/18	DESIGNED - ZJT	REVISED -
PLOT SCALE = 100.0000' / 1" =	DRAWN - ZJT	REVISED -
PLOT DATE = 10/19/2018	CHECKED - CEI	REVISED -
	DATE -	REVISED -

STATE OF ILLINOIS  
DEPARTMENT OF TRANSPORTATION

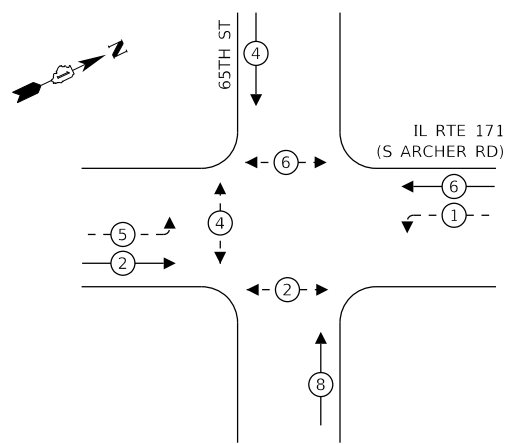
ILLINOIS ROUTE 171 OVER INGREDION RAILROAD  
TYPICAL SECTIONS

SCALE: SHEET OF SHEETS STA. TO STA.

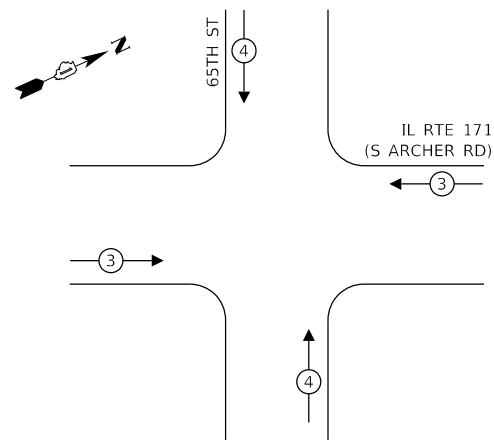
F.A.I. RTE. 3565	SECTION 46VB-2-BR	COUNTY COOK	TOTAL SHEETS 74	SHEET NO. 12
CONTRACT NO. 62F30				
ILLINOIS FED. AID PROJECT				



**PROPOSED CONTROLLER SEQUENCE**



**PROPOSED EMERGENCY VEHICLE PREEMPTION SEQUENCE**



**SCHEDULE OF QUANTITIES**

ITEM DESCRIPTION	UNITS	TOTAL QTY.
UNDERGROUND CONDUIT, GALVANIZED STEEL, 3" DIA.	FOOT	26
ELECTRIC CABLE IN CONDUIT, SIGNAL NO. 14 2C	FOOT	358
ELECTRIC CABLE IN CONDUIT, SIGNAL NO. 14 3C	FOOT	372
ELECTRIC CABLE IN CONDUIT, EQUIPMENT GROUNDING CONDUCTOR, NO. 6 1C	FOOT	28
TRAFFIC SIGNAL POST, GALVANIZED STEEL 18 FT.	EACH	0
TRAFFIC SIGNAL POST, GALVANIZED STEEL 16 FT.	EACH	1
TRAFFIC SIGNAL POST, GALVANIZED STEEL 18 FT.	EACH	1
CONCRETE FOUNDATION, TYPE A	FOOT	8
DRILL EXISTING HANDHOLE	EACH	2
PEDESTRIAN SIGNAL HEAD, LED, 1-FACE, BRACKET MOUNTED	EACH	2
DETECTOR LOOP, TYPE 1	FOOT	64
PEDESTRIAN PUSH-BUTTON	EACH	2
RELOCATE EXISTING SIGNAL HEAD	EACH	1
RELOCATE EXISTING PEDESTRIAN SIGNAL HEAD	EACH	1
RELOCATE EXISTING PEDESTRIAN PUSH-BUTTON	EACH	1
MODIFY EXISTING CONTROLLER	EACH	1
REMOVE AND REINSTALL ELECTRIC CABLE FROM CONDUIT	FOOT	30
REMOVE EXISTING TRAFFIC SIGNAL EQUIPMENT	EACH	1
REMOVE EXISTING CONCRETE FOUNDATION	EACH	1
RADAR VEHICLE DETECTION SYSTEM, SINGLE APPROACH, STOP BAR	EACH	2

**LEGEND:**

- ← (⊙) ← PROTECTED PHASE
- ← (⊙) - PROTECTED/PERMITTED PHASE
- ← (⊙) → PEDESTRIAN PHASE
- ← (⊙) OL OVERLAP

**TRAFFIC SIGNAL ELECTRICAL SERVICE REQUIREMENTS**

TYPE	NO. OF LAMPS	LED WATTAGE	% OPERATION	TOTAL WATTAGE
SIGNAL (RED)	10	11	50	55.0
(YELLOW)	10	20	5	10.0
(GREEN)	10	12	45	54.0
PERMISSIVE ARROW	8	10	10	8.0
PED. SIGNAL	6	20	100	120.0
CONTROLLER	1	100	100	100.0
UPS	1	25	100	25.0
VIDEO SYSTEM	-	150	100	-
BLANK-OUT SIGN	-	25	5	-
FLASHER	-	-	50	-
STREET NAME SIGN	-	120	50	-
LUMINAIRE	-	-	-	-
TOTAL =				372.0

ENERGY COSTS TO:

VILLAGE OF BEDFORD PARK  
6701 SOUTH ARCHER ROAD  
BEDFORD PARK, IL 60501

ENERGY SUPPLY: CONTACT: ILYAS MOHIUDDIN  
PHONE: (708) 235-2692  
COMPANY: COMMONWEALTH EDISON  
TOWER ACCOUNT NUMBER:

TS SHT NO. 10

MODEL: D:\proj\1110GNCADD\_Sheets\1110GNCADD\_Shts\171\_Rt\_65th\_St\_Cable\_Rlan.dwg  
FILE NAME: 1110GNCADD\_Sheets\1110GNCADD\_Shts\171\_Rt\_65th\_St\_Cable\_Rlan.dwg



USER NAME = mgarvida	DESIGNED - MG	REVISED - ADDENDUM 1 1/4/2018
PLOT SCALE = 2,000' / in.	DRAWN - MG	REVISED -
PLOT DATE = 1/3/2019	CHECKED - EC	REVISED -
	DATE - 10/18/2018	REVISED -

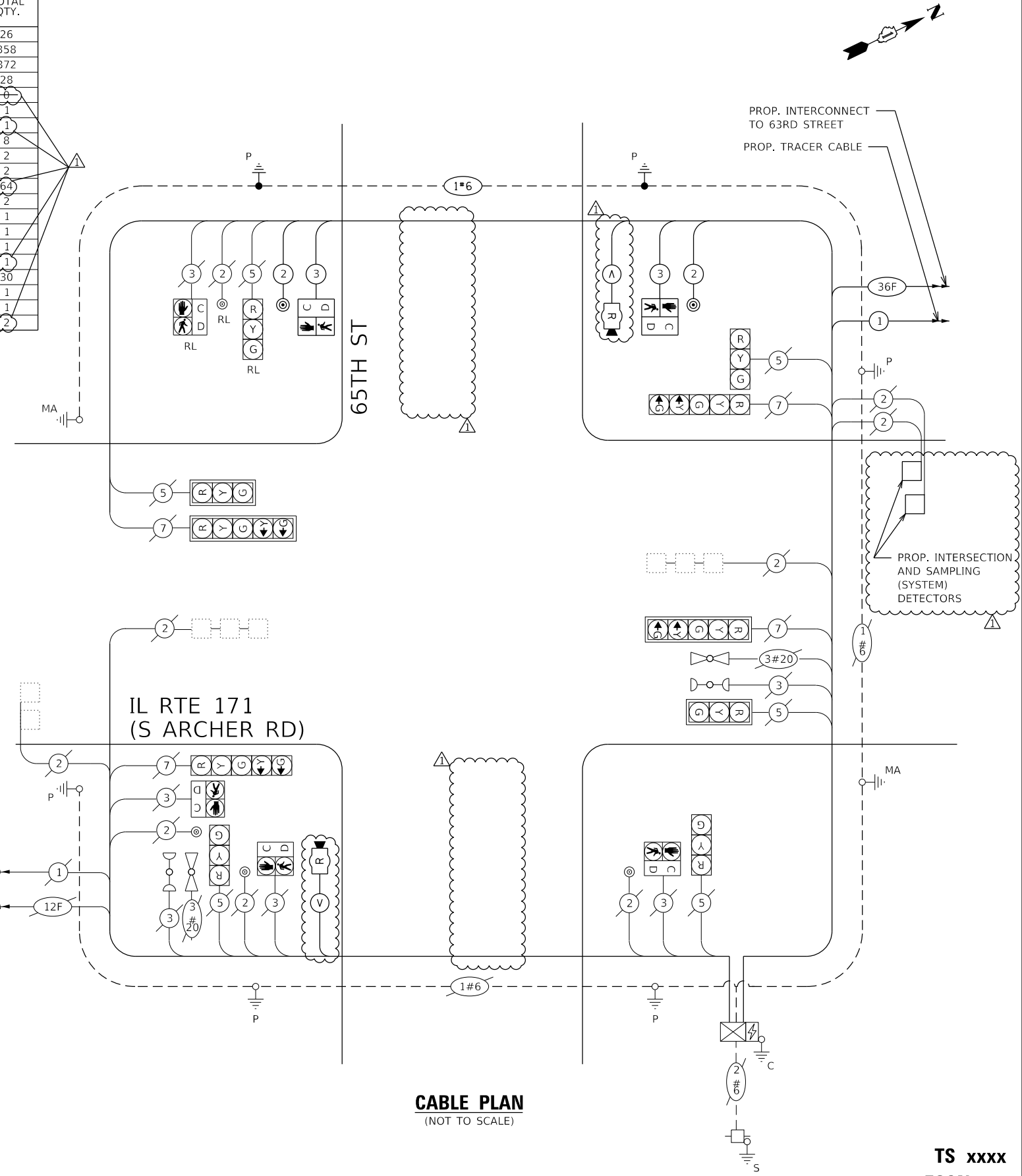
STATE OF ILLINOIS  
DEPARTMENT OF TRANSPORTATION

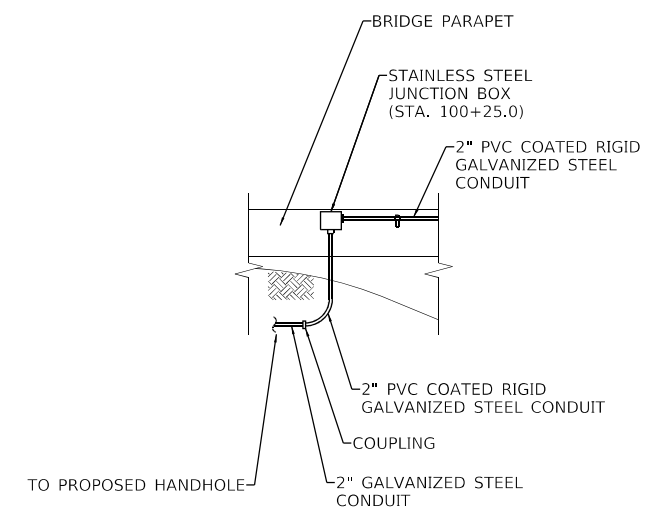
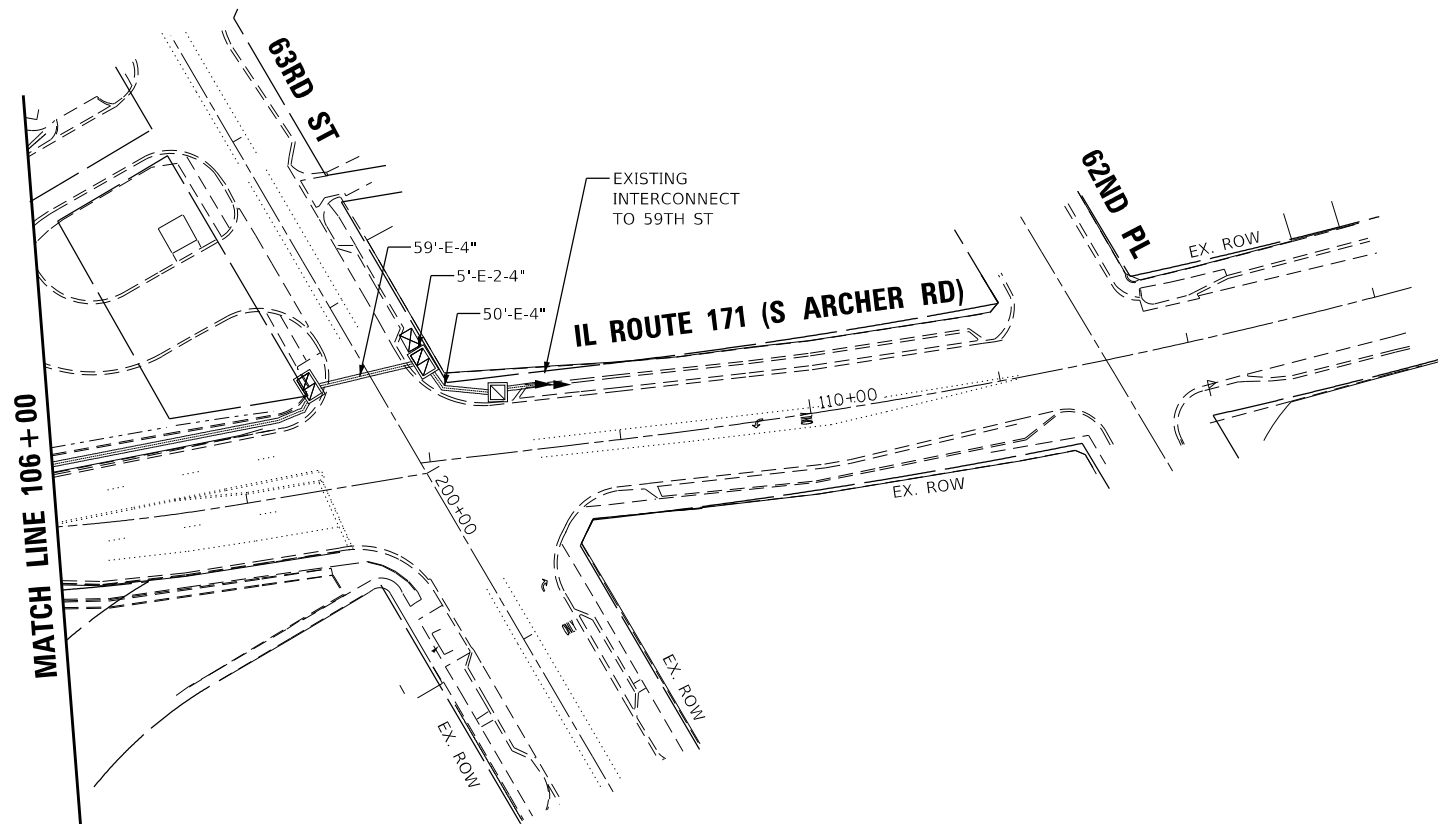
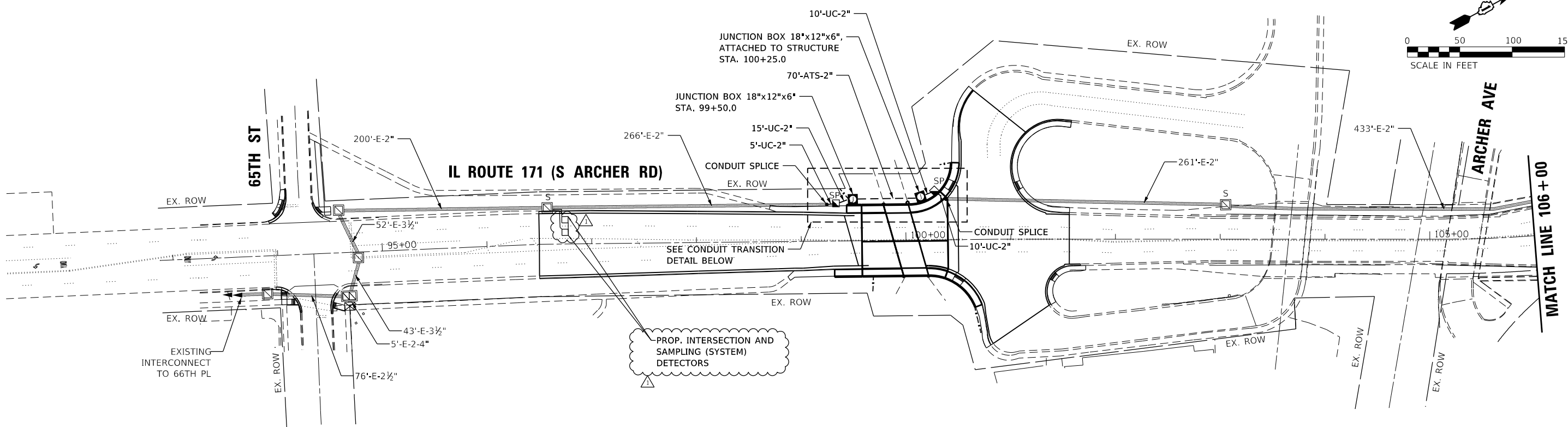
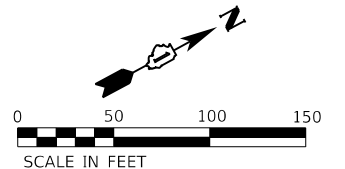
CABLE PLAN, PHASE DESIGNATION DIAGRAM, AND  
EMERGENCY VEHICLE PREEMPTION SEQUENCE  
IL ROUTE 171 (S ARCHER ROAD) AND 65TH STREET

SCALE: N.T.S. SHEET OF SHEETS STA. TO STA.

F.A.U. RTE. 3565	SECTION 46VB-2-BR	COUNTY COOK	TOTAL SHEETS 74	SHEET NO. 34
CONTRACT NO. 62F30				
ILLINOIS FED. AID PROJECT				

REV 1/8/19





CONDUIT TRANSITION DETAIL

TS SHT NO. 13

MODEL: D:\proj\1110\GNCADD\_Sheets\1110\GNCADD\_Sheets\1110\Prop\_Interconnect.dgn  
 FILE NAME: 1110221AW0\_1110GNCADD\_Sheets\1110\Prop\_Interconnect.dgn



USER NAME = mgarvida	DESIGNED - MG	REVISED $\Delta$ - ADDENDUM 1 1/4/2019
PLOT SCALE = 100.0002' / in.	DRAWN - MG	REVISED -
PLOT DATE = 1/3/2019	CHECKED - EC	REVISED -
	DATE - 10/18/2018	REVISED -

STATE OF ILLINOIS  
 DEPARTMENT OF TRANSPORTATION

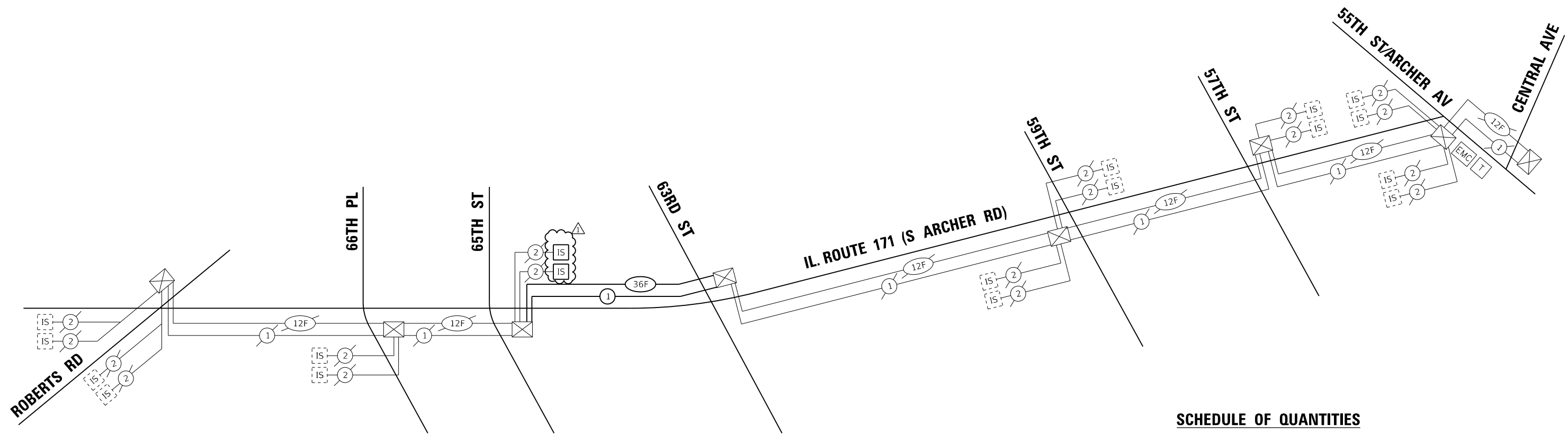
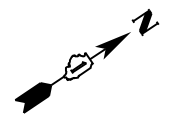
PROPOSED INTERCONNECT PLAN  
 IL ROUTE 171 (S ARCHER RD)-  
 65TH ST TO 63RD ST

SCALE: 1"=50' SHEET OF SHEETS STA. TO STA.

F.A.U. RTE.	SECTION	COUNTY	TOTAL SHEETS	SHEET NO.
3565	46VB-2-BR	COOK	74	37
CONTRACT NO. 62F30				

ILLINOIS FED. AID PROJECT





**SCHEDULE OF QUANTITIES**

ITEM DESCRIPTION	UNIT	TOTAL QTY
UNDERGROUND CONDUIT, GALVANIZED STEEL, 2" DIA.	FOOT	100
CONDUIT ATTACHED TO STRUCTURE, 2" DIA., PVC COATED GALVANIZED STEEL	FOOT	150
HANDHOLE	EACH	2
JUNCTION BOX, STAINLESS STEEL, ATTACHED TO STRUCTURE, 18" X 12" X 6"	EACH	2
MAINTENANCE OF EXISTING TRAFFIC SIGNAL INSTALLATION	EACH	2
ELECTRIC CABLE IN CONDUIT, TRACER, NO. 14 IC	FOOT	1600
DRILL EXISTING HANDHOLE	EACH	2
REMOVE ELECTRIC CABLE FROM CONDUIT	FOOT	3174
REMOVE EXISTING HANDHOLE	EACH	2
* ROD AND CLEAN EXISTING CONDUIT	FOOT	500
CONDUIT SPLICE	EACH	2
FIBER OPTIC CABLE IN CONDUIT, NO. 62.5/125, MM12F SM24F	FOOT	1574
TEMPORARY TRAFFIC SIGNAL INTERCONNECT	EACH	1
TEMPORARY TRAFFIC SIGNAL TIMING	EACH	2

\* NOMINAL QUANTITY TO BE USED AS NEEDED AND AS APPROVED BY THE ENGINEER

TS SHT NO. 14

MODEL: D:\proj\1110\GNCADD\_Sheets\1110\GNCADD\_Sheets\1110\Prop\_Interconnect\_Schematic.dgn  
 FILE NAME: 11102211W0\_1110GNCADD\_Sheets\1110\Prop\_Interconnect\_Schematic.dgn



USER NAME = mgarvida	DESIGNED - MG	REVISED  - ADDENDUM 1 1/4/2019
PLOT SCALE = 100.0002' / in.	DRAWN - MG	REVISED -
PLOT DATE = 1/3/2019	CHECKED - EC	REVISED -
	DATE - 10/18/2018	REVISED -

STATE OF ILLINOIS  
DEPARTMENT OF TRANSPORTATION

PROPOSED INTERCONNECT SCHEMATIC  
IL ROUTE 171 (S ARCHER RD)-  
ROBERTS RD TO 55TH ST /ARCHER AVE

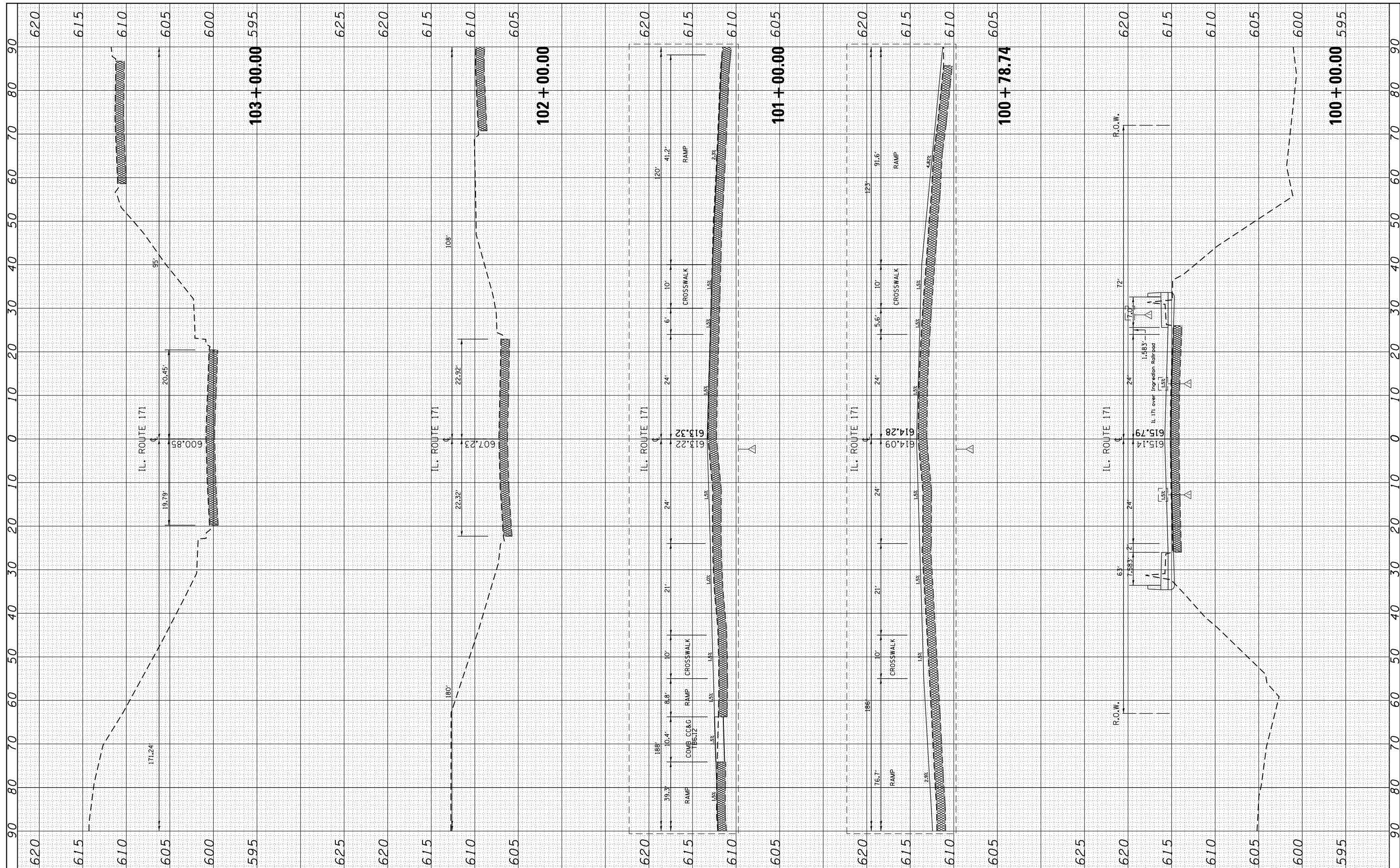
SCALE: N.T.S. SHEET OF SHEETS STA. TO STA.

F.A.U. RTE.	SECTION	COUNTY	TOTAL SHEETS	SHEET NO.
3565	46VB-2-BR	COOK	74	38
			CONTRACT NO. 62F30	
ILLINOIS FED. AID PROJECT				

REV 1/8/19

FINAL SURVEY	SURVEYED	BY	DATE
NOTE BOOK	PLOTTED		
NO.	TEMPLATE		
	AREAS		
	CHECKED		

ORIGINAL SURVEY	SURVEYED	BY	DATE
NOTE BOOK	PLOTTED		
NO.	TEMPLATE		
	AREAS		
	CHECKED		



FILE NAME = I:\10303 PTB 182 04\10303.11 - IL Rte 171 over Ingredion RR\CADD\CADD\_Sheets\DI62F30-sht-xssht-  
 USER NAME = ztanner  
 DESIGNED ZJT  
 REVISED 01/04/2018 ZJT  
 DRAWN ZJT  
 REVISED -  
 CHECKED AMS  
 REVISED -  
 DATE 10/21/2018  
 REVISED -  
 PLOT SCALE = 20.0000' / in.  
 PLOT DATE = 1/3/2019

DESIGNED ZJT  
 REVISED 01/04/2018 ZJT  
 DRAWN ZJT  
 REVISED -  
 CHECKED AMS  
 REVISED -  
 DATE 10/21/2018  
 REVISED -  
 PLOT SCALE = 20.0000' / in.  
 PLOT DATE = 1/3/2019

DESIGNED ZJT  
 REVISED 01/04/2018 ZJT  
 DRAWN ZJT  
 REVISED -  
 CHECKED AMS  
 REVISED -  
 DATE 10/21/2018  
 REVISED -  
 PLOT SCALE = 20.0000' / in.  
 PLOT DATE = 1/3/2019

STATE OF ILLINOIS  
 DEPARTMENT OF TRANSPORTATION

ILLINOIS ROUTE 171 OVER INGREDION RAILROAD  
 CROSS SECTIONS  
 SCALE: SHEET OF SHEETS STA. 99+00.00 TO STA. 100+00.00

F.A.U. RTE.	SECTION	COUNTY	TOTAL SHEETS	SHEET NO.
3565	46VB-2-BR	COOK	74	67
CONTRACT NO. 62F30				