

01-18-2019 LETTING ITEM 020

F.A.I. RTE.	SECTION	COUNTY	TOTAL SHEETS	SHEET NO.
39/4T	D5 CM2019-7	*	14	1
*MCLEAN/PIATT/DEWITT /ILLINOIS			CONTRACT NO. 70D49	

FOR INDEX OF SHEETS, SEE SHEET NO. 2  
FOR SUMMARY OF QUANTITIES, SEE SHEET NO. 6

STATE OF ILLINOIS  
DEPARTMENT OF TRANSPORTATION  
DIVISION OF HIGHWAYS

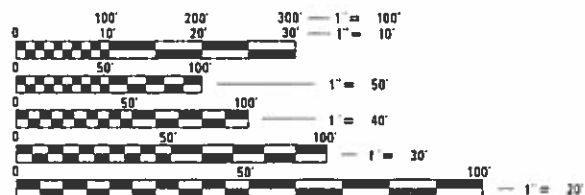
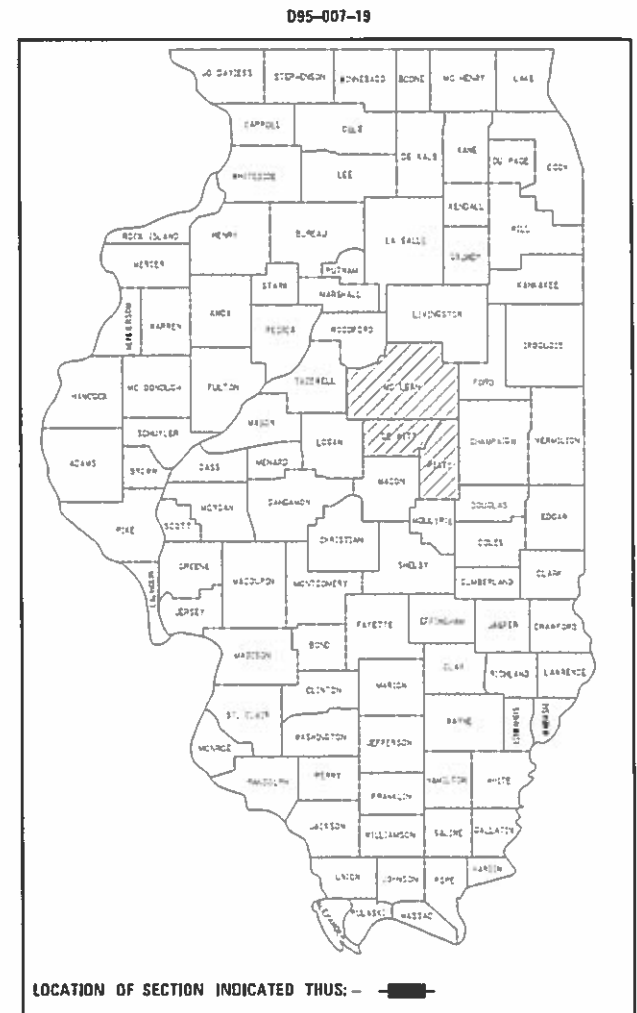
# PROPOSED HIGHWAY PLANS

FAI-74 /I-39  
SECTION D5 CM2019-7  
PROJECT  
PATCHING  
MCLEAN /PIATT /DEWITT COUNTIES  
C-95-010-19  
I-74 AND I-39

DESIGN DESIGNATION  
INTERSTATE

CURRENT ADT:  
MCLEAN COUNTY - 22,800 (2018)  
DEWITT COUNTY - 23,000 (2018)  
PIATT COUNTY - 23,200 (2018)

FOR LOCATION MAPS, SEE PAGES 3, 4, & 5



FULL SIZE PLANS HAVE BEEN PREPARED USING STANDARD ENGINEERING SCALES. REDUCED SIZED PLANS WILL NOT CONFORM TO STANDARD SCALES. IN MAKING MEASUREMENTS ON REDUCED PLANS, THE ABOVE SCALES MAY BE USED.

J.U.L.I.E.  
JOINT UTILITY LOCATION INFORMATION FOR EXCAVATION  
1-800-892-0123 OR 811  
  
BLUE RIDGE, HUDSON, DOWNS, FARMER CITY

PROJECT ENGINEER JASON STULTS 217-466-7364  
PROJECT MANAGER MICHAEL LEROY 217-466-7228  
  
CONTRACT NO. 70D49

GROSS LENGTH = 29,991 FT. = 5.680 MILE  
NET LENGTH = 29,991 FT. = 5.680 MILE

STATE OF ILLINOIS  
DEPARTMENT OF TRANSPORTATION  
DIVISION OF HIGHWAYS

SUBMITTED October 19, 2018  
Hensil A. Garnett s.w.  
REGION ENGINEER

Dec 7 2018  
Jason Stults  
ENGINEER OF DESIGN AND ENVIRONMENT

Dec 7 2018  
David C. Chisholm  
DIRECTOR OF HIGHWAYS PROJECT IMPLEMENTATION

PRINTED BY THE AUTHORITY  
OF THE STATE OF ILLINOIS

## INDEX OF SHEETS

SHEET NO	DESCRIPTION
1	COVER SHEET
2	INDEX OF SHEETS / HIGHWAY STANDARDS
2	GENERAL NOTES
3-5	LOCATION MAPS
6	SUMMARY OF QUANTITIES
7-8	EXISTING TYPICALS
9-10	SCHEDULE OF QUANTITIES
11-12	DETAIL - CLASS A (SPECIAL) PATCHING
13-14	DETAIL - PAVEMENT PATCHING SPECIAL

## GENERAL NOTES

G.N.-100  
 ENGLISH UNITS OF MEASUREMENT SHALL GOVERN OVER AND SUPERSEDE ANY METRIC UNITS SHOWN IN THIS CONTRACT. WHERE INCLUDED, METRIC UNITS ARE FOR INFORMATION ONLY.

G.N.-100A  
 ELECTRONIC FILES AND/OR ELECTRONIC SURVEY INFORMATION INCLUDING CADD FILES WILL NOT BE AVAILABLE TO THE CONTRACTOR.

G.N.-442B -- PATCHING SCHEDULES  
 THE PATCHING SCHEDULES INCLUDED IN THE PLANS REPRESENT THE BEST INFORMATION AVAILABLE AT THE TIME OF COMPLETION OF THE PLANS FOR LETTING. VARIATIONS IN LOCATION AND SIZES OF BOTH FULL-DEPTH AND PARTIAL-DEPTH PATCHES MAY OCCUR. PRIOR TO MARKING PATCHES THE RESIDENT ENGINEER WILL COORDINATE WITH THE MAINTENANCE FIELD ENGINEER SO THAT THE MAINTENANCE FIELD ENGINEER CAN ASSIST IN FINDING AND MARKING PATCH LOCATIONS.

G.N.-1004.01  
 COARSE AGGREGATE GRADATION CA-10 MAY BE USED WHENEVER COARSE AGGREGATE CA-6 IS SPECIFIED IN THE STANDARD SPECIFICATIONS.

NO COMMITMENTS

## HIGHWAY STANDARDS

STANDARD NO.	DESCRIPTION
000001-07	STANDARD SYMBOLS, ABBREVIATIONS, AND PATTERNS
001001-02	AREAS OF REINFORCEMENT BARS
001006	DECIMAL OF AN INCH AND OF A FOOT
420001-09	PAVEMENT JOINTS
420701-03	PAVEMENT WELDED WIRE REINFORCEMENT
421001-03	BAR REINFORCEMENT FOFR CRC PAVEMENT
701101-05	OFF-ROAD OPERATIONS, MULTILANE, 15' TO 24" FROM PAVEMENT EDGE
701106-02	OFF-ROAD OPERATIONS, MULTILANE, MORE THAN 15' AWAY
701400-09	APPROACH TO LANE CLOSURE, FREEWAY/EXPRESSWAY
701401-12	LANE CLOSURE, FREEWAY/EXPRESSWAY
701411-09	LANE CLOSURE, MULTILANE, AT ENTRANCE OR EXIT RAMP, FOR SPEEDS >= 45MPH
701901-08	TRAFFIC CONTROL DEVICES
701426-09	LANE CLOSURE, MULTILANE, INTERMITTENT OR MOVING OPER., FOR SPEEDS >/= 45 MPH

MODEL: #40DE1N.MXF  
 FILE NAME: P:\1118\818\818\NTEC\Illinois.gov\PWD\DOT\Documents\DOT\_Offices\District 5\Projects\0570D49\CADD\Drawings\0570D49-48t-gemnote.dgn

USER NAME = leroyma	DESIGNED -	REVISED -
	DRAWN -	REVISED -
PLOT SCALE = 40.0000 ' / in.	CHECKED -	REVISED -
PLOT DATE = 10/19/2018	DATE -	REVISED -

**STATE OF ILLINOIS  
 DEPARTMENT OF TRANSPORTATION**

SCALE: SHEET OF SHEETS STA. TO STA.

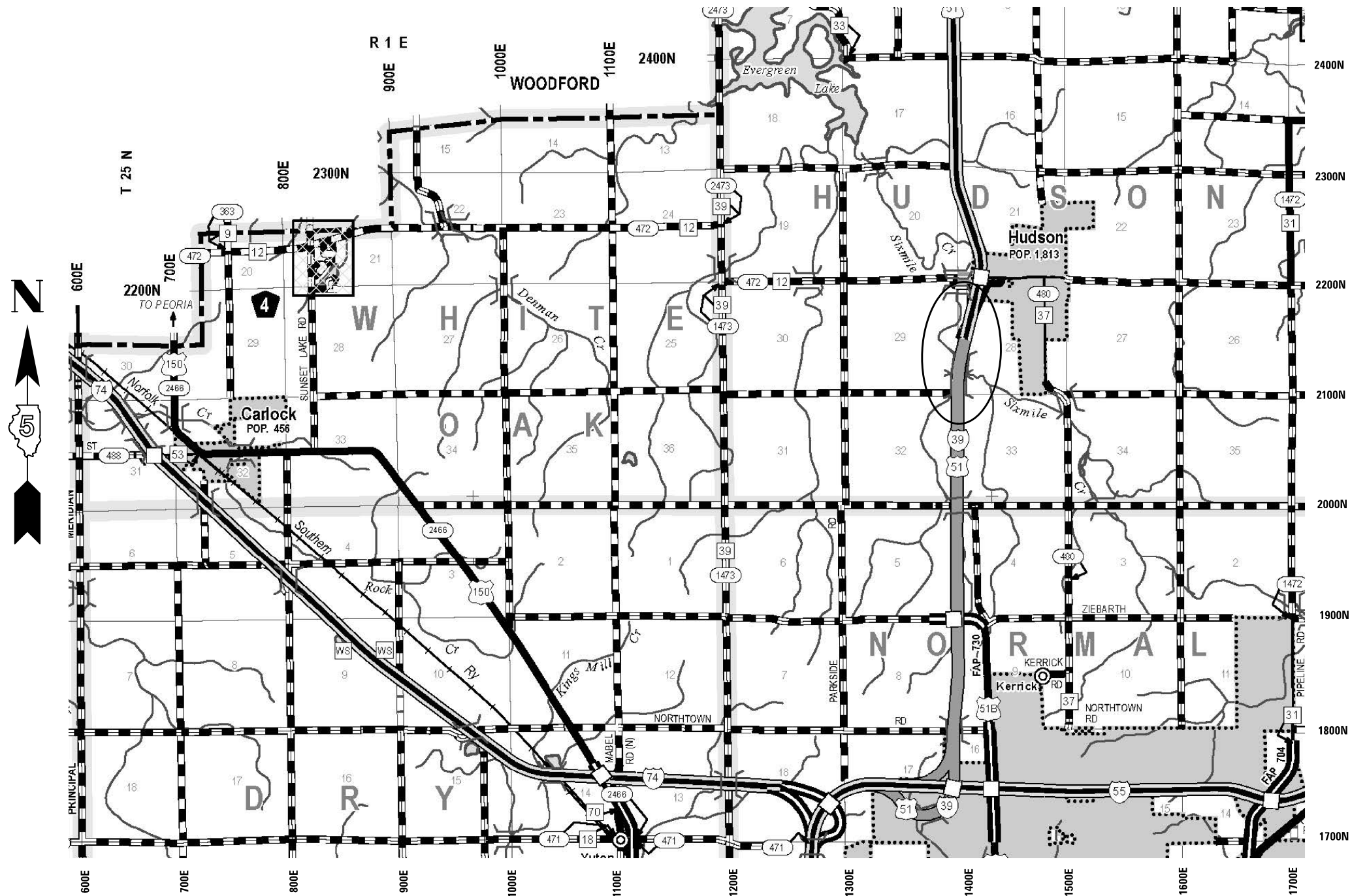
F.A.I. RTE.	SECTION	COUNTY	TOTAL SHEETS	SHEET NO.
39/74	D5 CM2019-7	VARIOUS	14	2
CONTRACT NO. 70D49				
ILLINOIS FED. AID PROJECT				



# LOCATION #3

## I-39

NB LANES STA. 310+00  
 SB LANES STA. 504+00 TO STA. 510+50



### MCLEAN COUNTY

MODEL: 44000ENR.MXD  
 FILE: 44000ENR.DWG  
 PROJECT: 0570049\_CADDData\Design\0570049\_rtc-cover.dwg

USER NAME = leroyma	DESIGNED -	REVISED -
	DRAWN -	REVISED -
PLOT SCALE = 40,0000' / in.	CHECKED -	REVISED -
PLOT DATE = 10/18/2018	DATE -	REVISED -

STATE OF ILLINOIS  
 DEPARTMENT OF TRANSPORTATION

LOCATION MAP

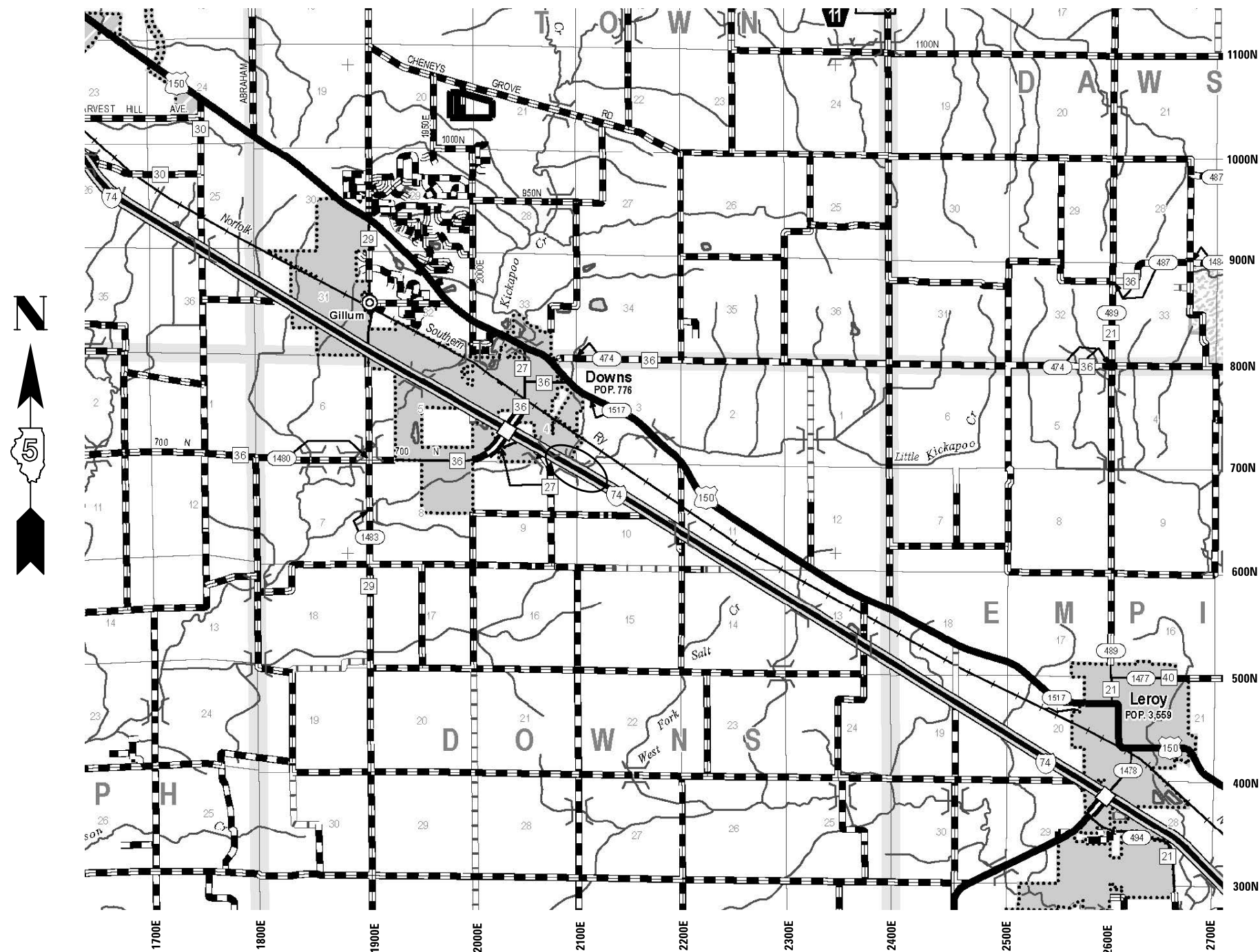
SCALE: SHEET 2 OF 3 SHEETS STA. TO STA.

F.A.I. RTE.	SECTION	COUNTY	TOTAL SHEETS	SHEET NO.
39/74	D5 CM2019-7	-	14	4
MCCLEAN/PIATT/DEWITT		CONTRACT NO. 70D49		
ILLINOIS FED. AID PROJECT				

# LOCATION #4

## I-74

EB LANES STA. 1128 + 00



MCLEAN COUNTY

STATE OF ILLINOIS  
DEPARTMENT OF TRANSPORTATION

LOCATION MAP

SCALE: SHEET 3 OF 3 SHEETS STA. TO STA.

F.A.I. RTE.	SECTION	COUNTY	TOTAL SHEETS	SHEET NO.
39/74	D5 CM2019-7	-	14	5
•MCLEAN/PIATT/DEWITT			CONTRACT NO. 70D49	
ILLINOIS FED. AID PROJECT				

MODEL: 440DELMN.MXD  
 FILE: 440DELMN.DWG  
 PROJECT: 05700149.CADDData\Design\05700149.dwg  
 USER: jle  
 DATE: 10/18/2018

USER NAME = leroyma	DESIGNED -	REVISED -
	DRAWN -	REVISED -
PLOT SCALE = 40,0000' / in.	CHECKED -	REVISED -
PLOT DATE = 10/18/2018	DATE -	REVISED -

# SUMMARY OF QUANTITIES

LOCATION #1 FAI 74 PIATT STA. 1259+00 TO STA. 1327+00	LOCATION #2 FAI 74 DEWITT STA. 663+00 EB TO STA. 847+70 EB STA. 846+00 WB TO STA. 897+75 WB	LOCATION #3 FAI 39 MCLEAN STA. 306+14 TO STA. 306+35	LOCATION #4 FAI 74 MCLEAN STA. 1128+00
RURAL INTERSTATE 100% STATE	RURAL INTERSTATE 100% STATE	RURAL INTERSTATE 100% STATE	RURAL INTERSTATE 100% STATE
CONSTRUCTION CODE: 0006	0006	0006	0006

PAY ITEM CODE	DESCRIPTION	UNIT	TOTAL	QTY	QTY	QTY	QTY
44213000	PATCHING REINFORCEMENT	SQ YD	543.0	104.0	320.0	30.0	89.0
44213200	SAW CUTS	FOOT	1460.0	276.0	864.0	180.0	140.0
44213204	TIE BARS 3/4"	EACH	1278.0	242.0	751.0	132.0	153.0
67100100	MOBILIZATION	LSUM	1.0	0.2	0.6	0.1	0.1
70100420	TRAFFIC CONTROL AND PROTECTION, STANDARD 701411	L SUM	3.0		2.0		1.0
70100800	TRAFFIC CONTROL AND PROTECTION, STANDARD 701401	EACH	1.0	0.2	0.6	0.1	0.1
70103815	TRAFFIC CONTROL SURVEILLANCE	CAL DA	11.0	5.0	2.0	2.0	2.0
70107025	CHANGEABLE MESSAGE SIGN	CAL DA	26.0	10.0	3.0	3.0	10.0
X1700051	CLASS A PATCHES, TYPE IV, 15 INCH (SPECIAL)	SQ YD	80.0	80.0			
X1700081	CLASS A PATCHES, TYPE II, 16 INCH (SPECIAL)	SQ YD	147.0		147.0		
X1700082	CLASS A PATCHES, TYPE IV, 16 INCH (SPECIAL)	SQ YD	174.0		174.0		
X4420630	CLASS A PATCHES, TYPE II, 15 INCH (SPECIAL)	SQ YD	54.0	24.0		30.0	
X9400003	PAVEMENT PATCHING (SPECIAL)	SQ YD	89.0			27.0	62.0

MODEL: \$MODELNAME  
 FILE NAME: P:\1118\BID\NTEG\Illinois.gov\PIWDOT\Documents\DOT\_Offices\District 5\Projects\0570D49\CADD\Design\0570D49.rft-SC0.dgn

USER NAME = leroyma	DESIGNED -	REVISED -
	DRAWN -	REVISED -
PLOT SCALE = 40.0000' / in.	CHECKED -	REVISED -
PLOT DATE = 10/18/2018	DATE -	REVISED -

**STATE OF ILLINOIS  
DEPARTMENT OF TRANSPORTATION**

**SUMMARY OF QUANTITIES**

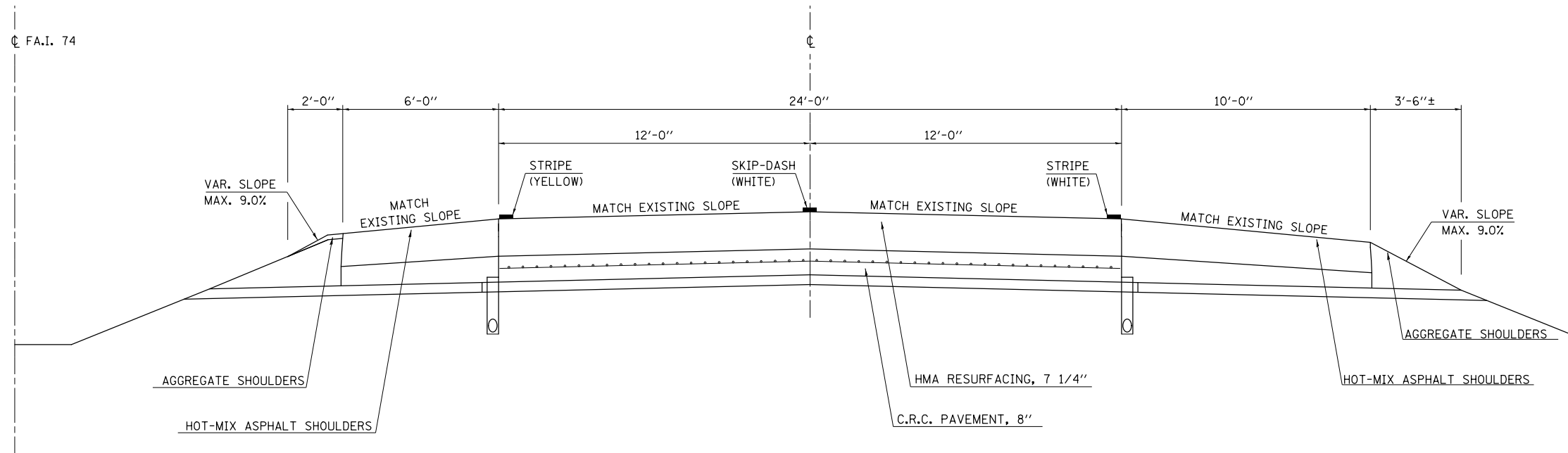
SCALE: SHEET OF SHEETS STA. TO STA.

F.A.I. RTE.	SECTION	COUNTY	TOTAL SHEETS	SHEET NO.
39/74	D5 CM2019-7	*	14	6
*MCLEAN/PIATT/DEWITT		CONTRACT NO. 70D49		
ILLINOIS FED. AID PROJECT				



## EXISTING TYPICAL SECTION ( I-74 DEWITT COUNTY)

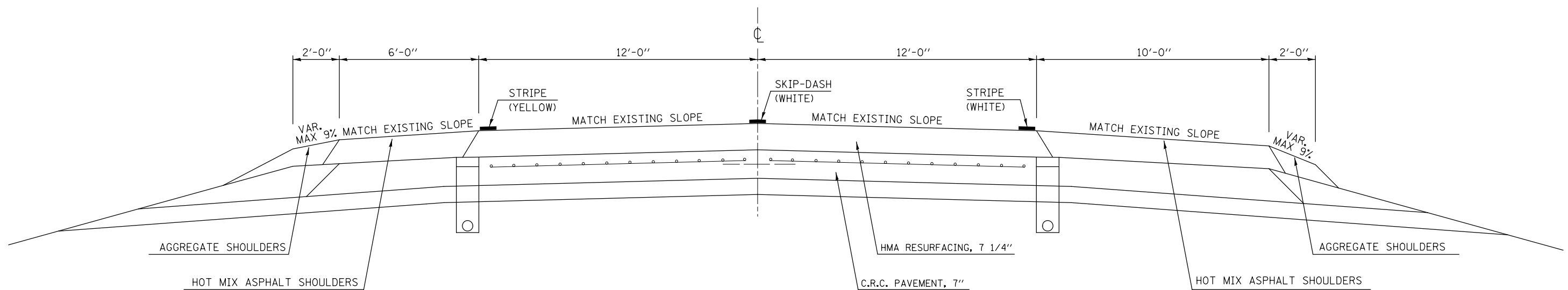
STATION                      TO                      STATION  
 EB 663+00.00                      EB 847+70.00  
 WB 846+00.00                      WB 897+75.00



NOT TO SCALE

## EXISTING TYPICAL SECTION ( I-74 PIATT COUNTY)

STATION   TO   STATION  
 1259+00    1327+00



NOT TO SCALE

FILE NAME =	USER NAME = leroyma	DESIGNED - JMS	REVISED -	<b>STATE OF ILLINOIS DEPARTMENT OF TRANSPORTATION</b>	<b>EXISTING TYPICAL SECTIONS</b>	F.A.I. RTE. 39/74	SECTION D5 CM2019-7	COUNTY *	TOTAL SHEETS 14	SHEET NO. 7	
DRAWN Data\Design\MS70049-sh-typical.s.dwg						SCALE: NO SCALE		SHEET NO. 1 OF 8 SHEETS		STA. TO STA.	
PLOT SCALE = 100.0000' / 1" .						FED. ROAD DIST. NO. ILLINOIS		FED. AID PROJECT		CONTRACT NO. 70D49	
PLOT DATE = 10/18/2018						DATE - 02/27/2009		REVISED -			





### CLASS A (SPECIAL), 16"

APPROX. STATION	LANE	LENGTH	WIDTH	SQ YD	TYPE	DESCRIPTION	CLASS A PATCHES, TYPE II, 16 INCH (SPECIAL) (SQ YD)	CLASS A PATCHES, TYPE IV, 16 INCH (SPECIAL) (SQ YD)	SAW CUTS (FT)	TIE BARS 3/4" TRANVERSE (EACH) RURAL	TIE BARS 3/4" LONGITUDINAL (EACH) RURAL	PATCHING REINFORCEMENT (SQ. YD) RURAL
							X1700081	X1700082	44213200	44213204	44213204	44213000
<b>DEWITT COUNTY (I-74)</b>												
846+00	WBDL	50	12	66.67	CL "A"			66.67	124	44	18	66.7
847+00	WBDL	50	12	66.67	CL "A"			66.67	124	44	18	66.7
897+75	WBDL	8	12	10.67	CL "A"		10.67		40	44	0	10.7
663+00	EBDL	10	12	13.33	CL "A"		13.33		44	44	0	13.3
663+00	EBPL	8	12	10.67	CL "A"		10.67		40	44	0	10.7
684+00	EBDL	10	12	13.33	CL "A"		13.33		44	44	0	13.3
715+00	EBPL	10	12	13.33	CL "A"		13.33		44	44	0	13.3
723+15	EBPL	10	12	13.33	CL "A"		13.33		44	44	0	13.3
733+60	EBPL	8	12	10.67	CL "A"		10.67		40	44	0	10.7
769+50	EBPL	10	12	13.33	CL "A"		13.33		44	44	0	13.3
783+00	EBPL	8	12	10.67	CL "A"		10.67		40	44	0	10.7
783+50	EBPL	8	12	10.67	CL "A"		10.67		40	44	0	10.7
805+00	EBPL	8	12	10.67	CL "A"		10.67		40	44	0	10.7
845+00	EBPL	6	12	8.00	CL "A"		8.00		36	44	0	8.0
846+50	EBPL	6	12	8.00	CL "A"		8.00		36	44	0	8.0
847+70	EBDL	30	12	40.00	CL "A"			40.00	84	44	11	40.0
<b>TOTAL</b>				320.00			146.67	173.33	864.00	704.00	47.00	320.00
<b>USE</b>							147.00	174.00	864.00	704.00	47.00	320.00

### CLASS A (SPECIAL), 15"

APPROX. STATION	LANE	LENGTH	WIDTH	SQ YD	TYPE	DESCRIPTION	CLASS A PATCHES, TYPE II, 15 INCH (SPECIAL) (SQ YD)	SAW CUTS (FT)	TIE BARS 3/4" TRANVERSE (EACH) RURAL	PATCHING REINFORCEMENT (SQ. YD) RURAL
							X4420630	44213200	44213204	44213000
<b>MCLEAN COUNTY (I-39)</b>										
510+50	SBDL	6	12	8.00	CL "A"		8.00	36	44	8.0
508+00	SBDL	6	12	8.00	CL "A"		8.00	36	44	8.0
504+00	SBDL	10	12	13.33	CL "A"		13.33	44	44	13.3
<b>TOTALS</b>				29.33			29.33	116.00	132.00	29.33
<b>USE</b>							30.00	116.00	132.00	30.00

MODEL: \\MODELNAME  
 FILE: \\NAME.PLOT  
 PROJECT: \\PROJECTNAME  
 OFFICE: \\OFFICE  
 DESIGNED: \\DESIGNED  
 DRAWN: \\DRAWN  
 CHECKED: \\CHECKED  
 DATE: \\DATE

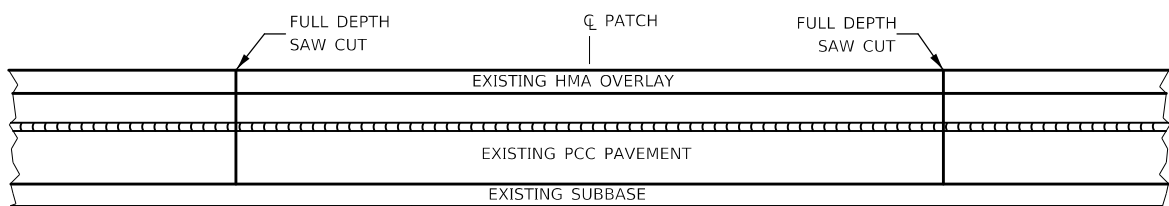
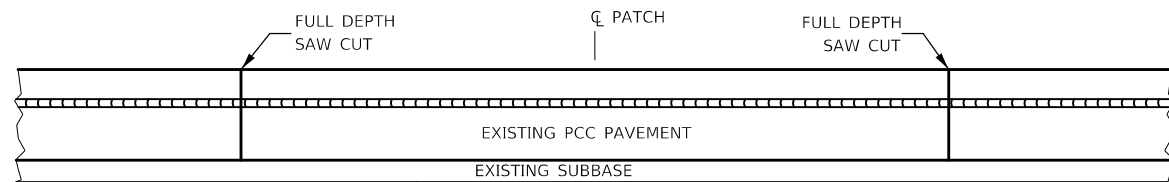
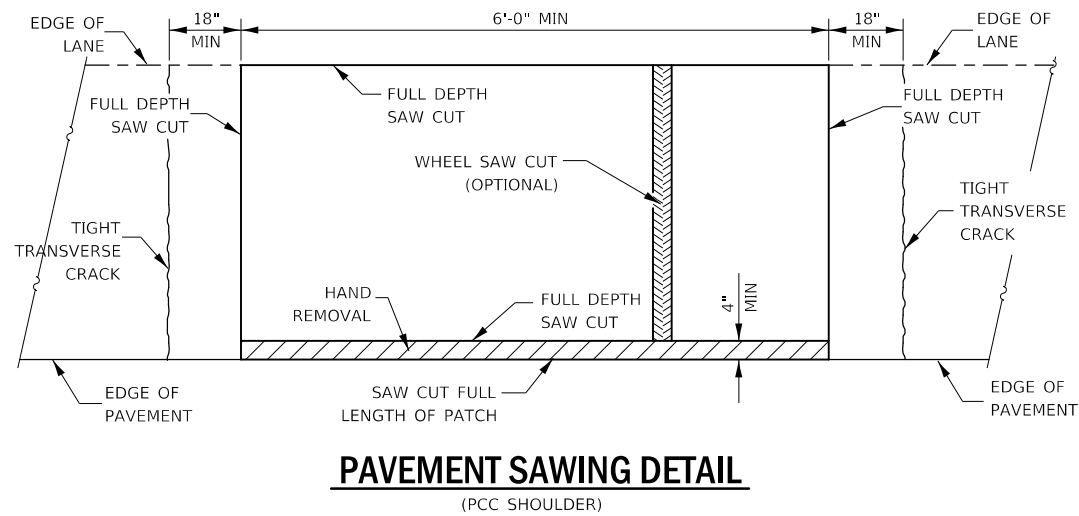
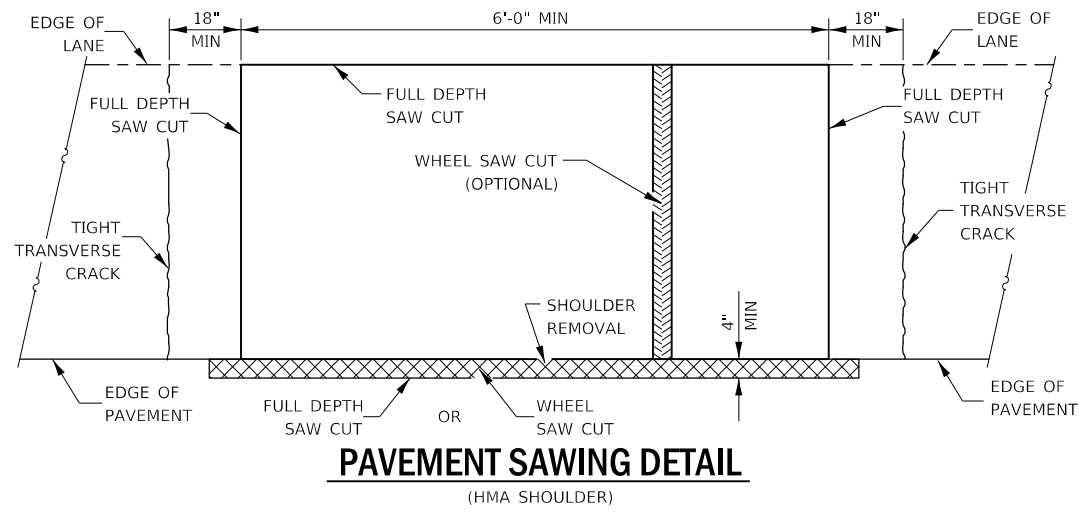
USER NAME = leroyma	DESIGNED -	REVISED -
	DRAWN -	REVISED -
PLOT SCALE = 40.0000' / in.	CHECKED -	REVISED -
PLOT DATE = 10/18/2018	DATE -	REVISED -

**STATE OF ILLINOIS  
DEPARTMENT OF TRANSPORTATION**

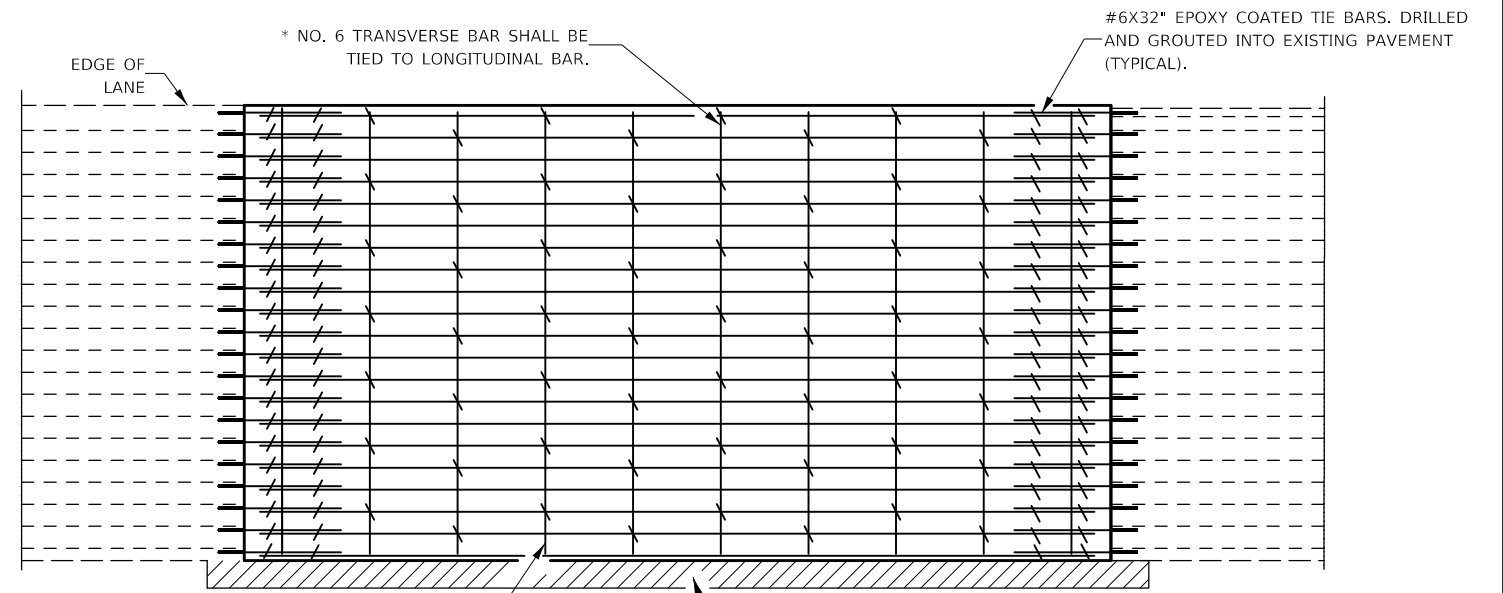
**SCHEDULE OF QUANTITIES**

SCALE: SHEET 2 OF 6 SHEETS STA. TO STA.

F.A.I. RTE.	SECTION	COUNTY	TOTAL SHEETS	SHEET NO.
39/74	D5 CM2019-7	*	14	10
**MCLEAN/PIATT/DEWITT		CONTRACT NO. 70D49		
ILLINOIS		FED. AID PROJECT		

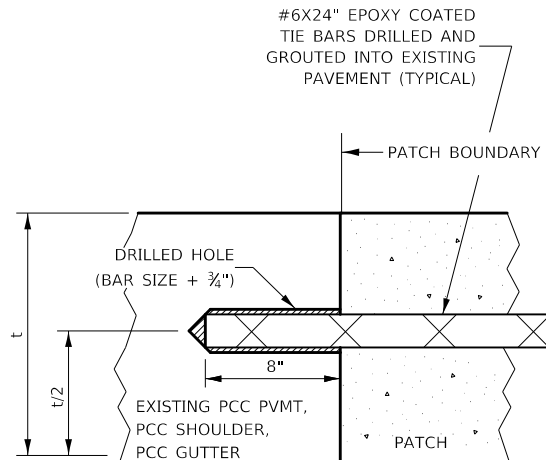


**PAVEMENT SAWING DETAIL FOR CLASS A PATCHING (CRC PAVEMENT)**



TRANSVERSE REBAR SHALL EXTEND TO OUTER LONGITUDINAL REBAR WHILE PROVIDING A MINIMUM 3" CLEARANCE FROM EXISTING PAVEMENT EDGE

**PAVEMENT REINFORCEMENT DETAIL**



**LONGITUDINAL CONSTRUCTION JOINT**

PATCHES MORE THAN 20' IN LENGTH SHALL BE TIED TO ADJACENT PAVEMENT, PCC SHOULDERS OR PCC CURB AND GUTTER WITH #6x24" EPOXY COATED TIE BARS AT 36" CENTERS.

**NOTES:**

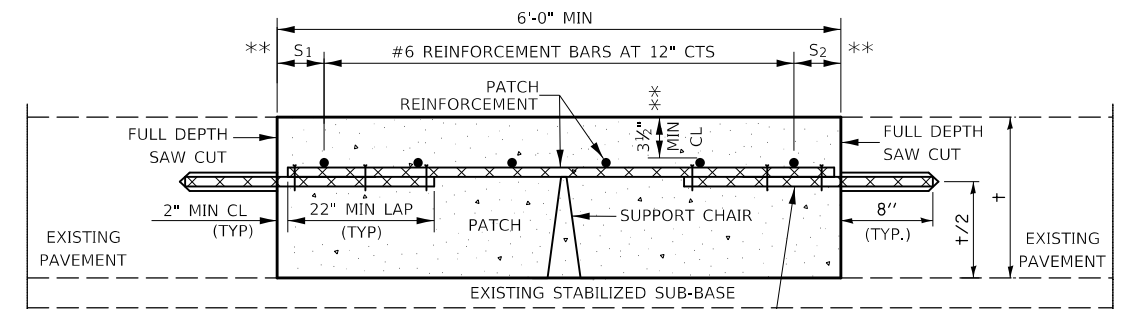
EXISTING LONGITUDINAL REINFORCEMENT SPACING:  $\pm 6\frac{1}{2}$ ".

SPACING OF NEW LONGITUDINAL REINFORCEMENT AND NEW LONGITUDINAL TIE BARS SHALL MATCH SPACING OF EXISTING REINFORCEMENT AND SHALL BE TIED TOGETHER WITH A MINIMUM OF TWO TIES PER BAR.

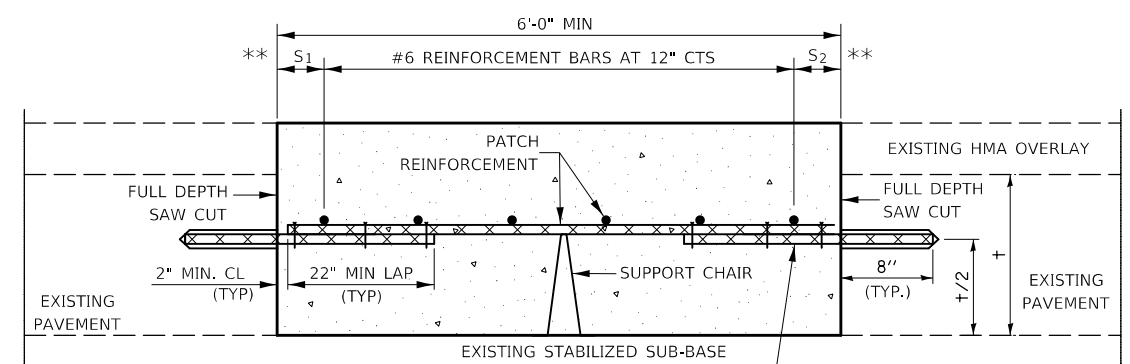
SUPPORT CHAIRS SHALL BE REQUIRED WHENEVER PATCH LENGTH EXCEEDS 6'-0"

\* EVERY THIRD INTERSECTION MUST BE TIED. WHEN THE MINIMUM CLEARANCE CANNOT BE OBTAINED WITH THE TRANSVERSE REBAR ON TOP, THEN THE TRANSVERSE REBAR SHALL BE TIED TO THE BOTTOM OF THE LONGITUDINAL REBAR.

\*\* VARIABLES WHERE S<sub>1</sub> AND S<sub>2</sub> ARE 2½" MIN. AND 12" MAX.



**WITHOUT HMA OVERLAY**



**WITH HMA OVERLAY**

**PATCHING DETAIL FOR CLASS A PATCHING (CRC PAVEMENT)**

MODEL: \\MODELNAME; FILE NAME: \\FILENAME; PROJECT: \\PROJECT; OFFICE: \\OFFICE; DESIGNED: \\DESIGNED; DRAWN: \\DRAWN; CHECKED: \\CHECKED; DATE: \\DATE; PLOT DATE: \\PLOT DATE; PLOT SCALE: \\PLOT SCALE; PLOT DATE: 10/18/2018

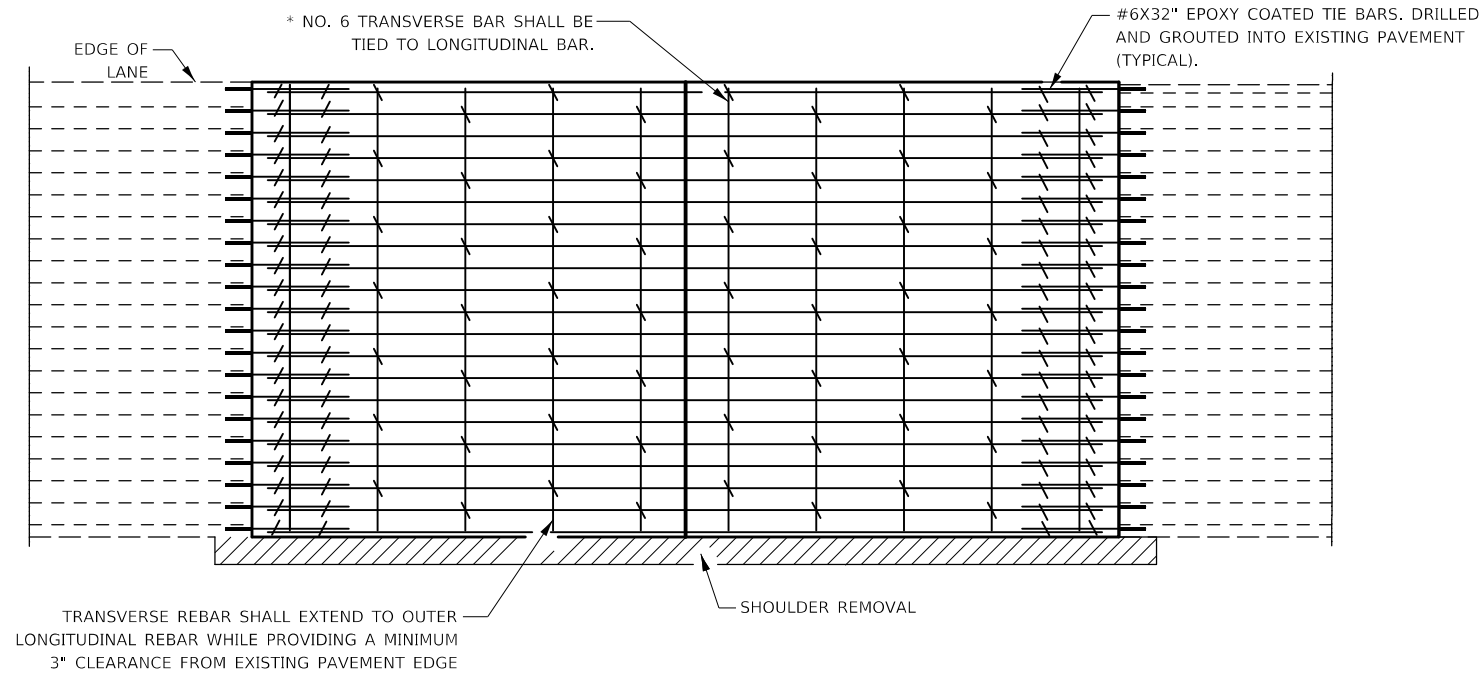
USER NAME = leroyma	DESIGNED -	REVISED -
PLOT SCALE = 100,0000' / in.	DRAWN -	REVISED -
PLOT DATE = 10/18/2018	CHECKED -	REVISED -
	DATE -	REVISED -

**STATE OF ILLINOIS  
DEPARTMENT OF TRANSPORTATION**

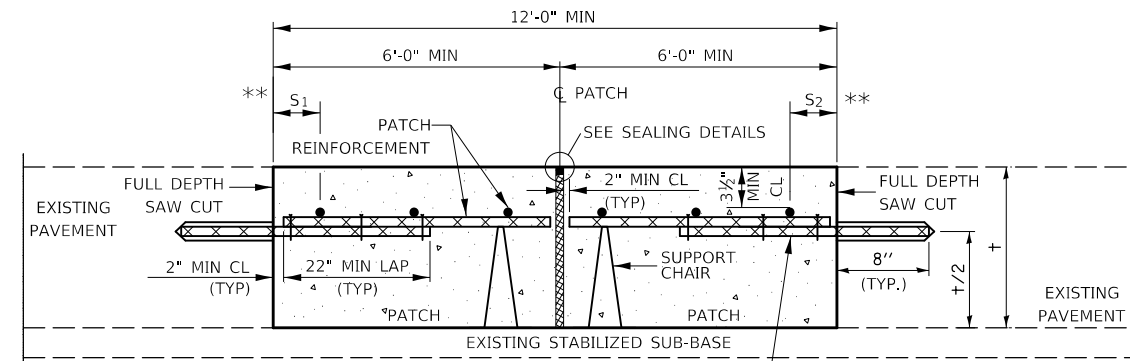
**CLASS A PATCHING (SPECIAL)**

SCALE: SHEET 1 OF 2 SHEETS STA. TO STA.

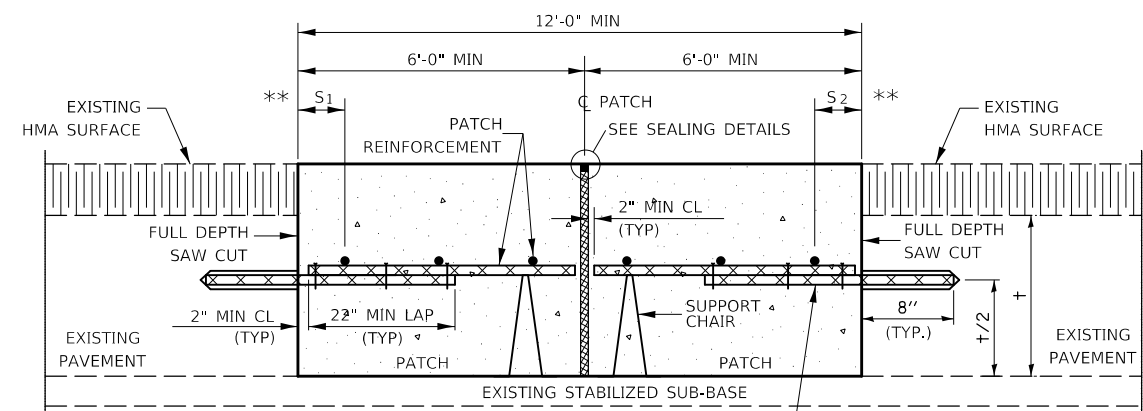
F.A.I. RTE.	SECTION	COUNTY	TOTAL SHEETS	SHEET NO.
39/74	D5 CM2019-7	*	14	11
*MCLEAN/PIATT/DEWITT		CONTRACT NO. 70D49		
ILLINOIS FED. AID PROJECT				



**PAVEMENT REINFORCEMENT DETAIL**

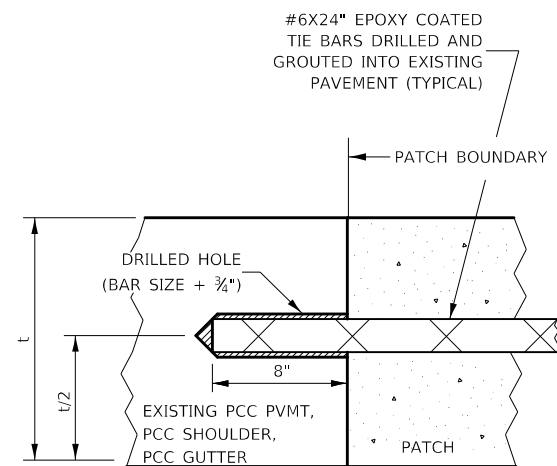


**WITHOUT HMA OVERLAY**



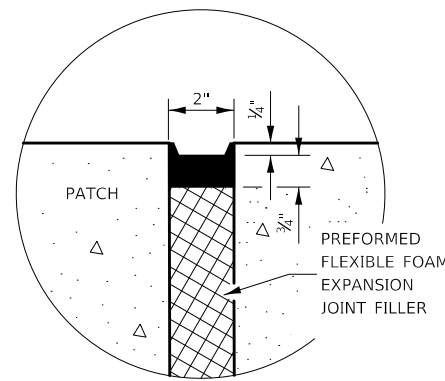
**WITH HMA OVERLAY**

**CLASS A PATCH WITH EXPANSION JOINT**

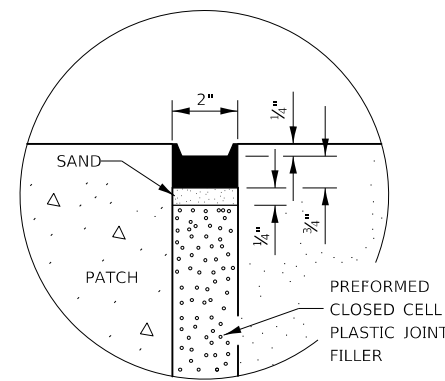


**LONGITUDINAL CONSTRUCTION JOINT**

PATCHES MORE THAN 20' IN LENGTH SHALL BE TIED TO ADJACENT PAVEMENT, PCC SHOULDERS OR PCC CURB AND GUTTER WITH #6X24" EPOXY COATED TIE BARS AT 36" CENTERS.



**SEALING DETAIL**



**SEALING DETAIL**

**NOTES:**

EXISTING LONGITUDINAL REINFORCEMENT SPACING;  $\pm 6\frac{1}{2}$ ".

SPACING OF NEW LONGITUDINAL REINFORCEMENT AND NEW LONGITUDINAL TIE BARS SHALL MATCH SPACING OF EXISTING REINFORCEMENT AND SHALL BE TIED TOGETHER WITH A MINIMUM OF TWO TIES PER BAR.

SUPPORT CHAIRS SHALL BE REQUIRED WHENEVER PATCH LENGTH EXCEEDS 6'-0"

\* EVERY THIRD INTERSECTION MUST BE TIED. WHEN THE MINIMUM CLEARANCE CANNOT BE OBTAINED WITH THE TRANSVERSE REBAR ON TOP, THEN THE TRANSVERSE REBAR SHALL BE TIED TO THE BOTTOM OF THE LONGITUDINAL REBAR.

\*\* VARIABLES WHERE S<sub>1</sub> AND S<sub>2</sub> ARE 2 $\frac{1}{2}$ " MIN. AND 12" MAX.

MODEL: 440061.MXD; FILE NAME: P:\PROJECTS\0570D49\CADD\DATA\Design\0570D49-eh-detailed.dgn

USER NAME = leroyma	DESIGNED -	REVISED -
	DRAWN -	REVISED -
PLOT SCALE = 100.0000' / in.	CHECKED -	REVISED -
PLOT DATE = 10/18/2018	DATE -	REVISED -

**STATE OF ILLINOIS  
DEPARTMENT OF TRANSPORTATION**

**CLASS A PATCHING (SPECIAL)**

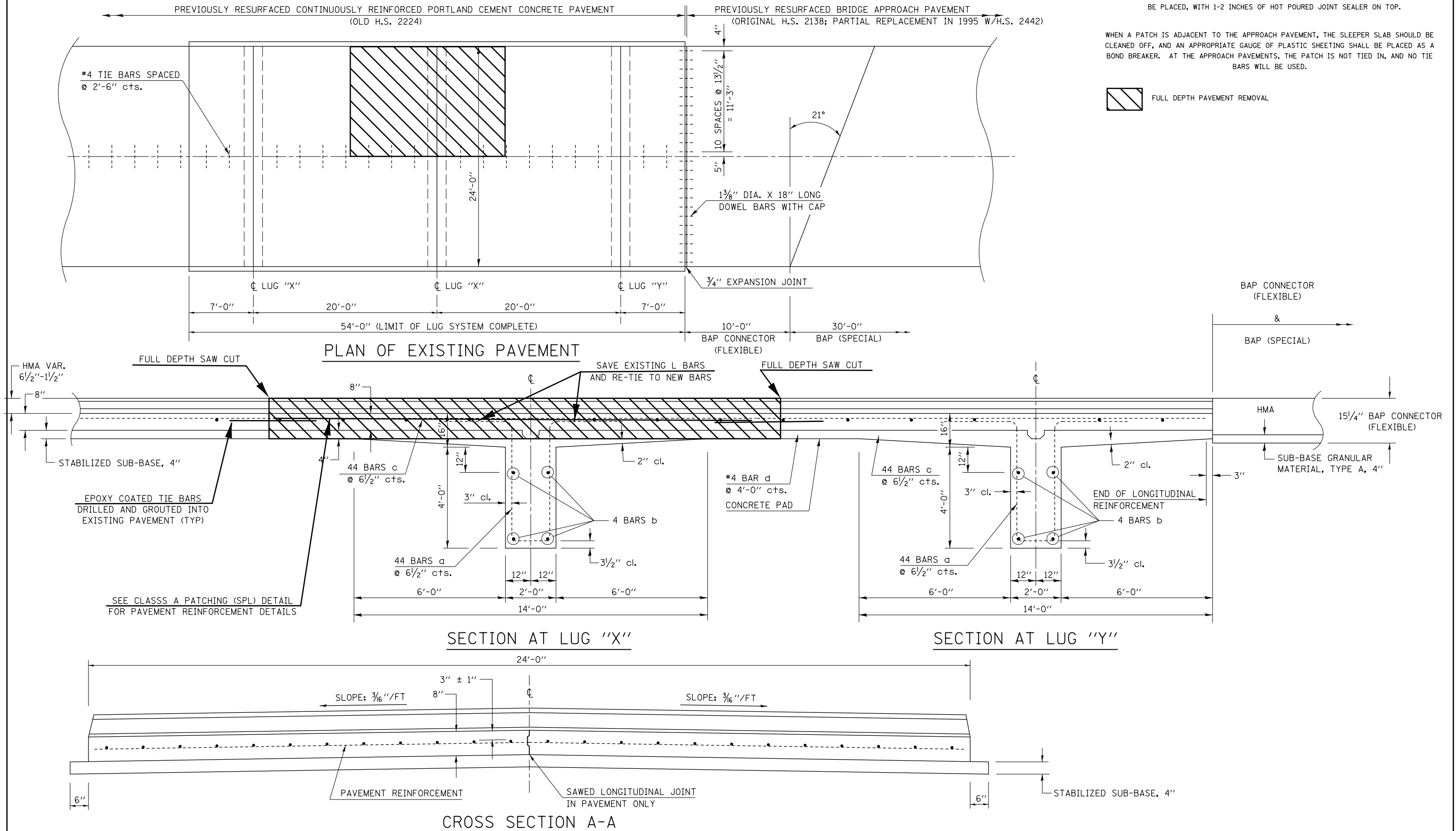
SCALE: SHEET 2 OF 2 SHEETS STA. TO STA.

F.A.I. RTE.	SECTION	COUNTY	TOTAL SHEETS	SHEET NO.
39/74	D5 CM2019-7	*	14	12
*MCLEAN/PIATT/DEWITT		CONTRACT NO. 70D49		
ILLINOIS FED. AID PROJECT				

# DETAIL FOR PAVEMENT PATCHING (SPECIAL) (CLASS A (SPL) PATCH AT LUGS)

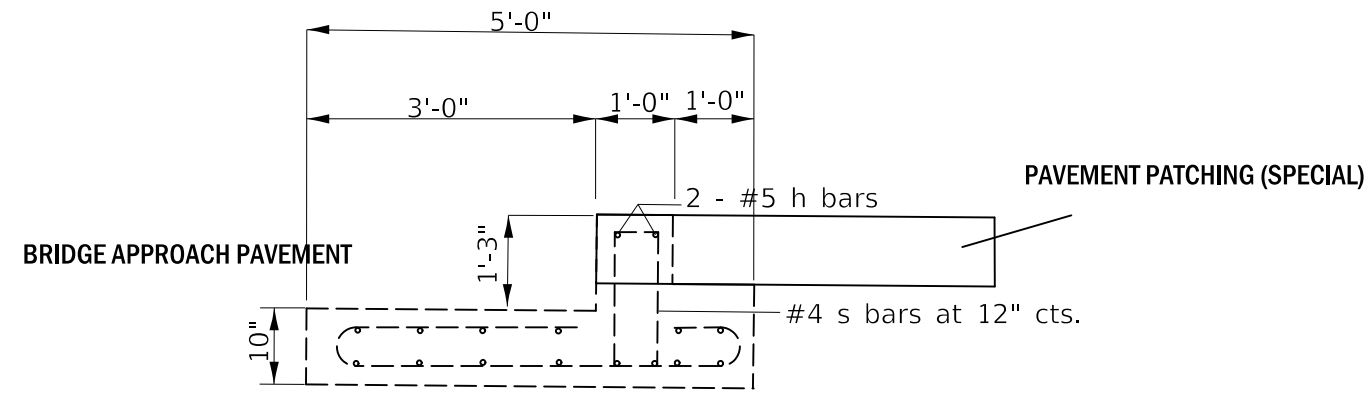
WHEN A PATCH IS ADJACENT TO THE APPROACH PAVEMENT, OR ANYWHERE EXISTING EXPANSION MATERIAL IS LOCATED, EXPANSION MATERIAL OF APPROPRIATE THICKNESS SHOULD BE PLACED, WITH 1-2 INCHES OF HOT POURED JOINT SEALER ON TOP.

WHEN A PATCH IS ADJACENT TO THE APPROACH PAVEMENT, THE SLEEPER SLAB SHOULD BE CLEANED OFF, AND AN APPROPRIATE GAUGE OF PLASTIC SHEETING SHALL BE PLACED AS A BOND BREAKER. AT THE APPROACH PAVEMENTS, THE PATCH IS NOT TIED IN, AND NO TIE BARS WILL BE USED.



FILE NAME =	USER NAME = leroyma	DESIGNED - GAE	REVISED -	<b>STATE OF ILLINOIS DEPARTMENT OF TRANSPORTATION</b>	<b>PAVEMENT PATCHING (SPECIAL)</b>			F.A. RTE.	SECTION	COUNTY	TOTAL SHEETS	SHEET NO.
pw:\1\084EBIDINTEG.illinois.gov\PIWIDOT\Documents\IDOT Offices\District 5\Projects\0579\DRAWING\0579\0579-0049-shr-details2.dwg	PROJECT NO. = 0579-0049	DRAWN BY = BGP	REVISED -		VAR.	D5 CM2019-7	*	14	13			
PLOT SCALE = 40.0000' / in.	CHECKED -	REVISOR -	REVISED -		*MCLEAN/PIATT/DEWITT			CONTRACT NO. 70D49				
PLOT DATE = 10/18/2018	DATE - 08/17/11	REVISED -	REVISED -		SCALE: NONE	SHEET NO. 1 OF 1 SHEETS	STA.	TO STA.	FED. ROAD DIST. NO.	ILLINOIS FED. AID PROJECT		

# BRIDGE APPROACH CONNECTOR (SPECIAL)



CLEAN AND PRESERVE h BARS AND INCORPORATE INTO PAVEMENT PATCH SPECIAL.

MODEL: \\MODELNAME  
 FILE NAME: \\FILENAME  
 PROJECT: \\PROJECT  
 CADD: \\CADD  
 DESIGN: \\DESIGN  
 DATE: \\DATE

USER NAME = leroyma	DESIGNED -	REVISED -
	DRAWN -	REVISED -
PLOT SCALE = 100.0000' / in.	CHECKED -	REVISED -
PLOT DATE = 10/18/2018	DATE -	REVISED -

**STATE OF ILLINOIS  
DEPARTMENT OF TRANSPORTATION**

## PAVEMENT PATCHING (SPECIAL)

SCALE: SHEET 2 OF 2 SHEETS STA. TO STA.

F.A.I. RTE.	SECTION	COUNTY	TOTAL SHEETS	SHEET NO.
39/74	D5 CM2019-7	*	14	14
*MCLEAN/PIATT/DEWITT			CONTRACT NO. 70D49	
ILLINOIS FED. AID PROJECT				