

F.A.S. RTE.	SECTION	COUNTY	TOTAL SHEETS	SHEET NO.
659	18,14,14-1,14-2	MOULTRIE	13	1
ILLINOIS		CONTRACT NO. 74869		

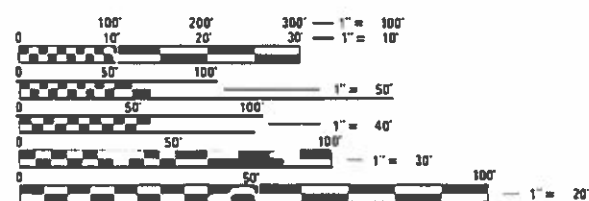
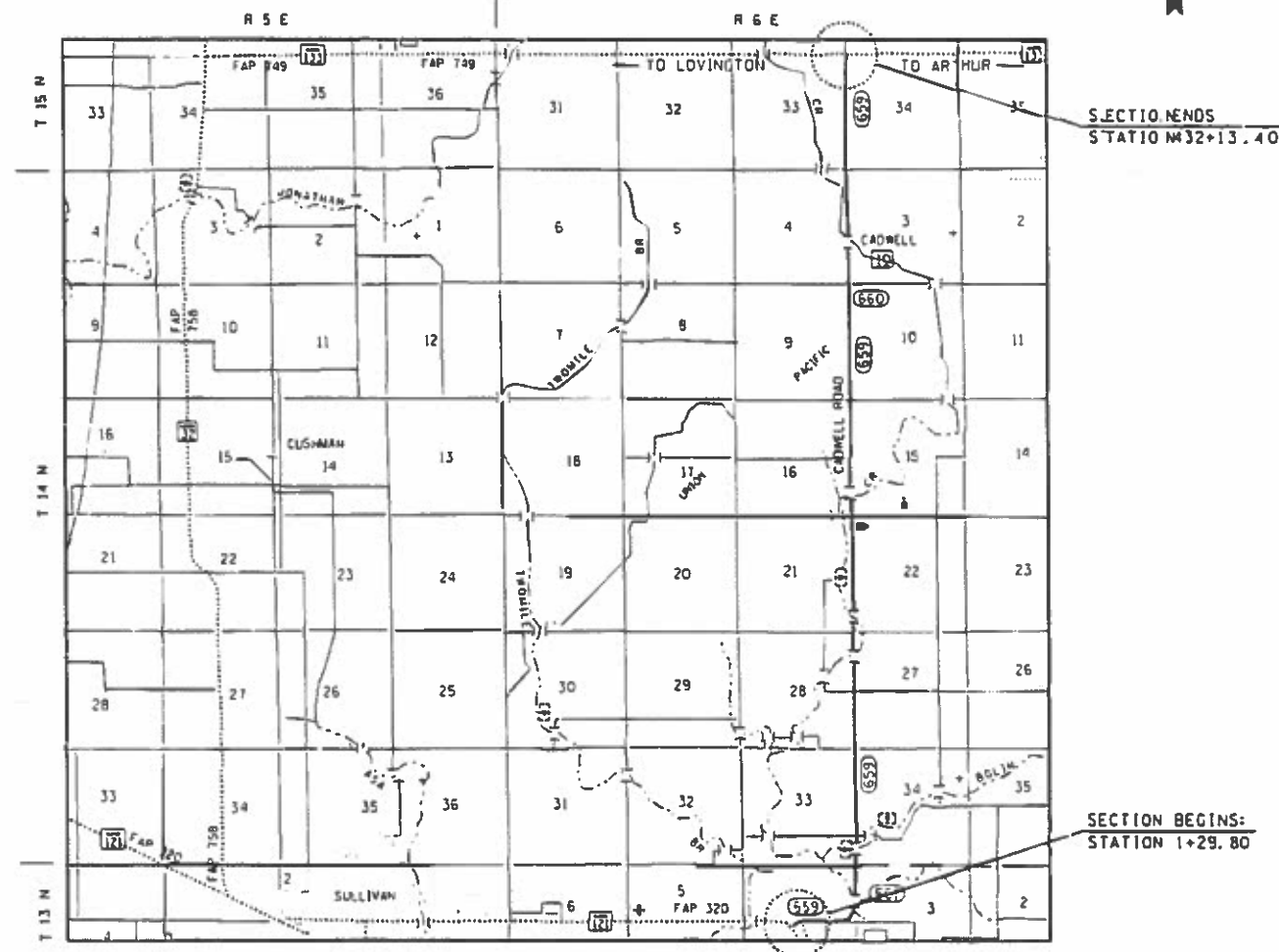
STATE OF ILLINOIS
DEPARTMENT OF TRANSPORTATION
DIVISION OF HIGHWAYS

**PROPOSED
HIGHWAY PLANS**

FAS ROUTE 659 (CADWELL ROAD)
SECTION (8, 14, 14-1, 14-2) PVMT PRSV
PROJECT STP X5DV (061)
BITUMINOUS SURFACE TREATMENT
MOULTRIE COUNTY
C-97-103-18

FOR INDEX OF SHEETS, SEE SHEET NO. 2

ADT = 2350 (2015)



FULL SIZE PLANS HAVE BEEN PREPARED USING STANDARD ENGINEERING SCALES. REDUCED SIZED PLANS WILL NOT CONFORM TO STANDARD SCALES. IN MAKING MEASUREMENTS ON REDUCED PLANS, THE ABOVE SCALES MAY BE USED.

J.U.L.I.E.
JOINT UTILITY LOCATION INFORMATION FOR EXCAVATION
1-800-892-0123
OR 811

PROJECT ENGINEER: DEBRA BARRETT
PROJECT MANAGER: AARON METTE
PHONE: 217-342-8253
CONTRACT NO. 74869

GROSS LENGTH = 43,084 FT = 8.16 MILE
NET LENGTH = 42,354 FT = 8.02 MILE

STATE OF ILLINOIS
DEPARTMENT OF TRANSPORTATION
DIVISION OF HIGHWAYS

SUBMITTED OCTOBER 12 2018
Jeffrey M. Swoboda
DEPUTY DIRECTOR OF HIGHWAYS REGIONAL ENGINEER

Debra Barrett
E.A. ETC
ENGINEER OF DESIGN AND ENVIRONMENT

Paul P. [Signature]
DIRECTOR OF HIGHWAYS PROJECT IMPLEMENTATION

PRINTED BY THE AUTHORITY
OF THE STATE OF ILLINOIS

GENERAL NOTES

INDEX OF SHEETS

SHEET NO.	DESCRIPTION
1	COVER SHEET
2	INDEX OF SHEETS & GENERAL NOTES
3	SUMMARY OF QUANTITIES
4	TYPICAL SECTIONS
5	LOCATION MAP
6-7	SCHEDULE OF QUANTITIES
8	TYPICAL RUMBLE STRIP APPLICATION
9	SURVEY MARKER VAULT DETAIL
10-13	DISTRICT 7 PAVEMENT MARKING DETAILS

IT IS THE INTENT OF THE DEPARTMENT THAT THE BITUMINOUS SURFACE TREATMENT A-1 EXTEND 12" ONTO THE SHOULDERS TO HELP SEAL THE CONSTRUCTION JOINT BETWEEN THE PAVEMENT AND SHOULDERS.

AGGREGATE FOR BITUMINOUS SURFACE TREATMENT SHALL BE CRUSHED STONE.

SHORT-TERM PAVEMENT MARKING SHALL BE APPLIED AFTER COMPLETION OF THE BITUMINOUS SURFACE TREATMENT. SHORT-TERM PAVEMENT MARKING SHALL BE PAINT AND CONSIST OF 10' LONG CENTERLINE SKIP DASHES EVERY 40'. THE FINAL PERMANENT PAVEMENT MARKING SHALL BE APPLIED DIRECTLY OVER THE SHORT-TERM PAVEMENT MARKING.

THE FOLLOWING STANDARDS ARE A PART OF THESE PLANS AND ARE INCLUDED FOLLOWING SHEET NUMBER 13

- 701001-02 OFF-ROAD OPERATIONS, 2L, 2W, MORE THAN 15' AWAY
- 701006-05 OFF-ROAD OPERATIONS, 2L, 2W, 15' TO 24" FROM PAVEMENT EDGE
- 701301-04 LANE CLOSURE, 2L, 2W, SHORT TIME OPERATIONS
- 701306-04 LANE CLOSURE, 2L, 2W, SLOW MOVING OPERATIONS DAY ONLY, FOR SPEEDS >= 45 MPH
- 701311-03 LANE CLOSURE, 2L, 2W, MOVING OPERATIONS - DAY ONLY
- 701901-08 TRAFFIC CONTROL DEVICES
- 780001-05 TYPICAL PAVEMENT MARKINGS

FILE NAME =	USER NAME = steffenmk	DESIGNED -	REVISED -	STATE OF ILLINOIS DEPARTMENT OF TRANSPORTATION	INDEX OF SHEETS & GENERAL NOTES	F.A.S. RTE.	SECTION	COUNTY	TOTAL SHEETS	SHEET NO.	
p:\11\084EBIDINTEG.illinois.gov\PI\DOT\Documents\DOT Offices\District 7\Projects\74869\Drawings\CAD\Sheets\074869-shr-gennotes.dwg		DRAWN	REVISED			659	(8,14,14-1,14-2) PVMT PRSV	MOULTRIE	13	2	
Default	PLOT SCALE = 100.0000' / 1in.	CHECKED -	REVISED -			CONTRACT NO. 74869		ILLINOIS FED. AID PROJECT			
	PLOT DATE = 10/15/2018	DATE -	REVISED -			SCALE:	SHEET	OF	SHEETS	STA.	TO

80% FEDERAL
20% STATE

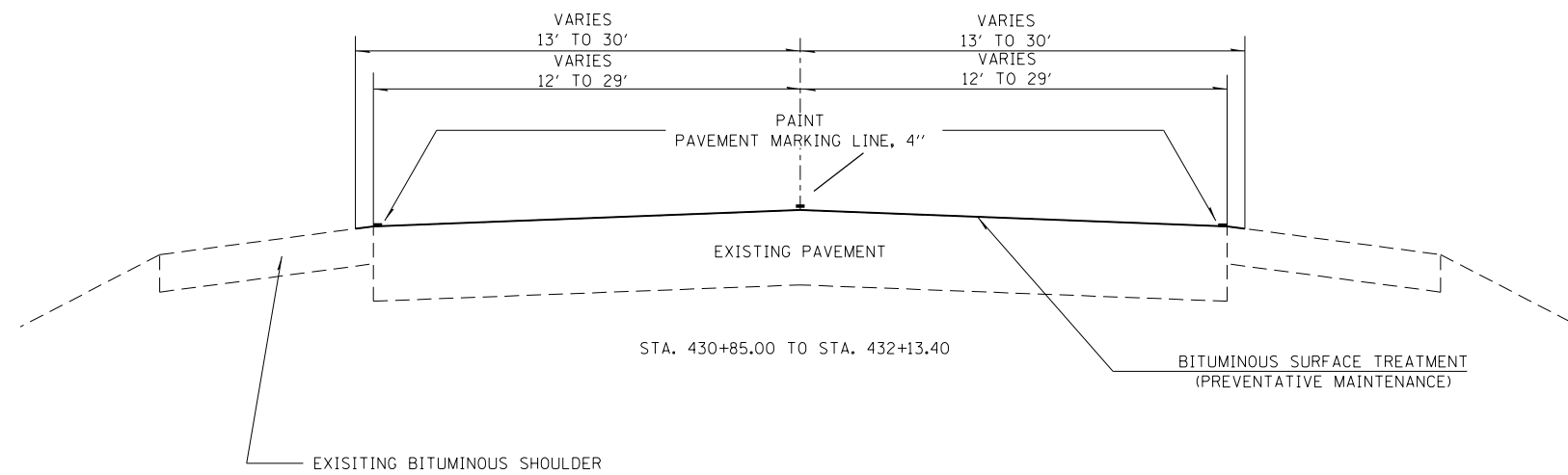
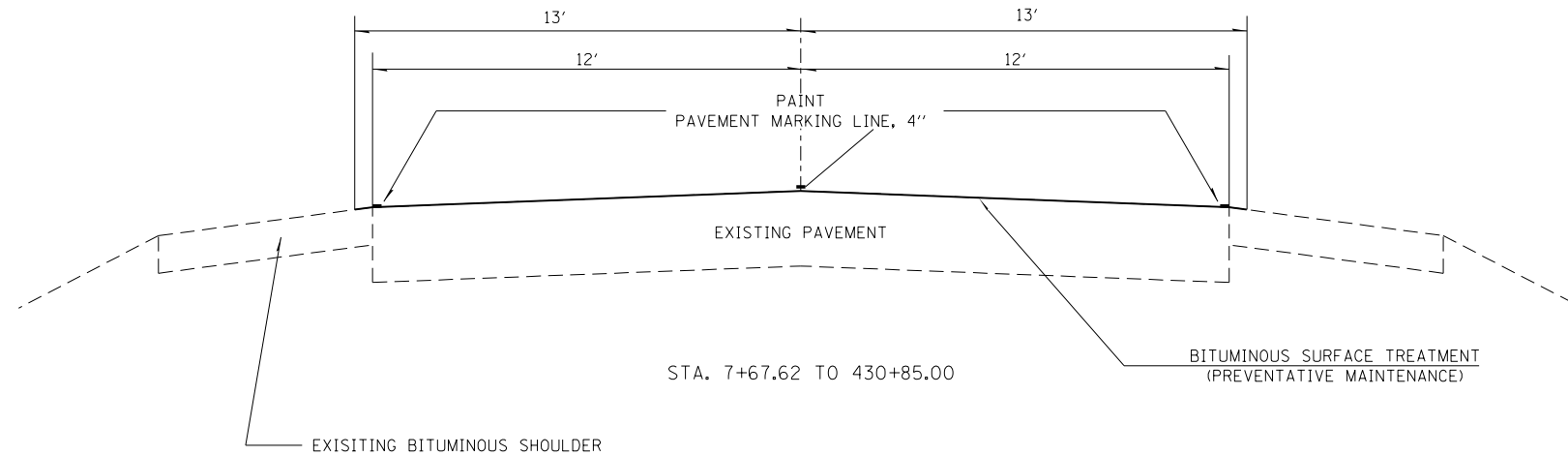
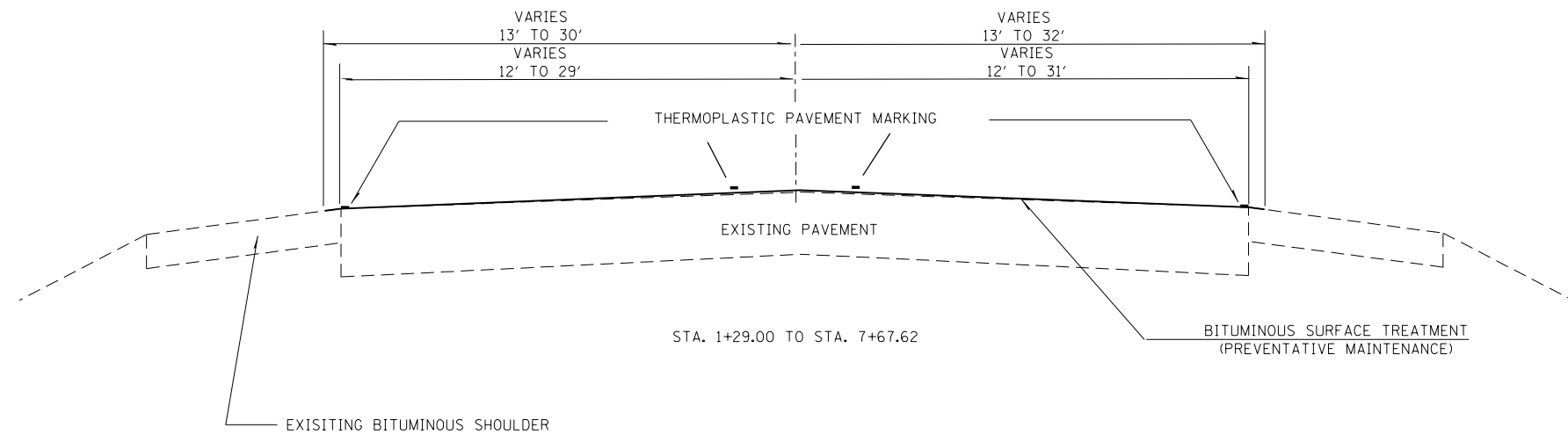
SUMMARY OF QUANTITIES			TOTAL QUANTITIES	CONSTRUCTION TYPE CODE	
CODE NO	ITEM	UNIT		0005 MOULTRIE COUNTY	
67100100	MOBILIZATION	LSUM	1	1.0	
70100460	TRAFFIC CONTROL AND PROTECTION, STANDARD 701306	LSUM	1	1.0	
70300100	SHORT TERM PAVEMENT MARKING	FOOT	10740	10740	
* 78000100	THERMOPLASTIC PAVEMENT MARKING - LETTERS AND SYMBOLS	SO FT	122.4	122.4	
* 78000200	THERMOPLASTIC PAVEMENT MARKING - LINE 4"	FOOT	1974	1974	
* 78000500	THERMOPLASTIC PAVEMENT MARKING - LINE 8"	FOOT	175	175	
* 78000600	THERMOPLASTIC PAVEMENT MARKING - LINE 12"	FOOT	411	411	
* 78000650	THERMOPLASTIC PAVEMENT MARKING - LINE 24"	FOOT	147	147	
* 78001110	PAINT PAVEMENT MARKING - LINE 4"	FOOT	104122	104122	
* 78100100	RAISED REFLECTIVE PAVEMENT MARKERS	EACH	552	552	
78300200	RAISED REFLECTIVE PAVEMENT MARKER REMOVAL	EACH	552	552	
X0327980	PAVEMENT MARKING REMOVAL - WATER BLASTING	SOFT	1349	1349	
X1500001	BITUMINOUS SURFACE TREATMENT, (PREVENTIVE MAINTENANCE)	SO YD	123847	123847	

SUMMARY OF QUANTITIES			TOTAL QUANTITIES	CONSTRUCTION TYPE CODE	
CODE NO	ITEM	UNIT		0005 MOULTRIE COUNTY	
X4406240	PARTIAL DEPTH REMOVAL, TYPE II, 4"	SO YD	37.3	37.3	
X4406440	PARTIAL DEPTH REMOVAL, TYPE III, 4"	SO YD	53.3	53.3	
X4421000	PARTIAL DEPTH PATCHING	TON	20.3	20.3	
70107025	CHANGEABLE MESSAGE SIGN	CAL DA	28	28	
Z0005010	HOT-MIX ASPHALT FOR PATCHING POTHOLES (COLD MIX)	TON	3	3	
Z0049799	PROTECTING OR RESETTING SURVEY MARKERS	EACH	32	32	
Z0055500	RUMBLE STRIP	SO FT	1950	1950	
Z0070202	SURVEY MARKER VAULT	EACH	5	5	

* SPECIALTY ITEM

REV. - MS

FILE NAME =	USER NAME = steffenmk	DESIGNED -	REVISED -	STATE OF ILLINOIS DEPARTMENT OF TRANSPORTATION	SUMMARY OF QUANTITIES	F.A.S. RTE.	SECTION	COUNTY	TOTAL SHEETS	SHEET NO.	
p:\11\084EBIDINTEG\11inois.gov\PIDOT\Documents\IDOT Offices\District 7\Projects\74869\Drawings\CAD\Sheets\74869-sh1-S00.dgn		CHECKED -	REVISED -			659	(8,14,14-1,14-2)	PVMT PRSV	MOULTRIE	13	3
Default		DATE -	REVISED -			SCALE: SHEET OF SHEETS STA. TO STA.		CONTRACT NO. 74869			
						ILLINOIS FED. AID PROJECT					



FILE NAME =	USER NAME = steffenmk	DESIGNED -	REVISED -
p:\11084EBIDINTEG.illinois.gov\PIWIDOT\Documents\IDOT Offices\District 7\Projects\74869\Drawings\CADsheets\074869-shr-typicals.dwg		DRAWN -	REVISED -
Default	PLOT SCALE = 100.0000' / 1in.	CHECKED -	REVISED -
	PLOT DATE = 10/15/2018	DATE -	REVISED -

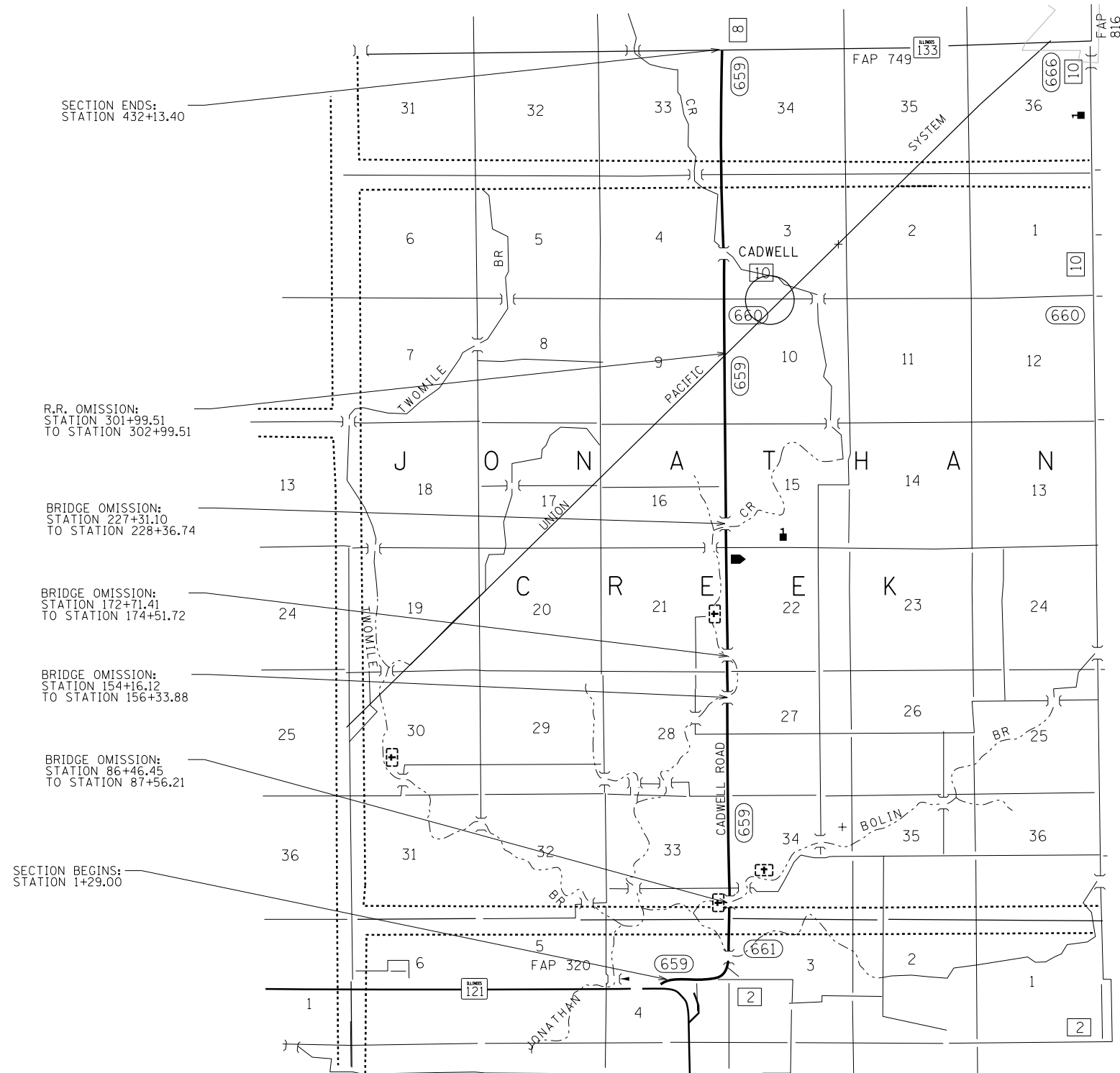
**STATE OF ILLINOIS
DEPARTMENT OF TRANSPORTATION**

TYPICAL SECTIONS

SCALE: SHEET OF SHEETS STA. TO STA.

F.A.S. RTE.	SECTION	COUNTY	TOTAL SHEETS	SHEET NO.
659	(8,14,14-1,14-2) PVMT PRSV	MOULTRIE	13	4
CONTRACT NO. 74869			ILLINOIS FED. AID PROJECT	

FAS 659 (CADWELL ROAD)
FROM IL 121 TO IL 133
MOULTRIE COUNTY



SECTION ENDS:
STATION 432+13.40

R.R. OMISSION:
STATION 301+99.51
TO STATION 302+99.51

BRIDGE OMISSION:
STATION 227+31.10
TO STATION 228+36.74

BRIDGE OMISSION:
STATION 172+71.41
TO STATION 174+51.72

BRIDGE OMISSION:
STATION 154+16.12
TO STATION 156+33.88

BRIDGE OMISSION:
STATION 86+46.45
TO STATION 87+56.21

SECTION BEGINS:
STATION 1+29.00

MODEL: Default
FILE NAME: P:\IL\B&E\BID\NTEC\Illinois.gov\PIVDOT\Documents\DOT_Offices\District 7\Projects\74869\CADDData\CAD\pkcs14869-shr-pln.dgn

USER NAME = steffenmk	DESIGNED -	REVISED -
	DRAWN -	REVISED -
PLOT SCALE = 100,0000' / in.	CHECKED -	REVISED -
PLOT DATE = 10/15/2018	DATE -	REVISED -

**STATE OF ILLINOIS
DEPARTMENT OF TRANSPORTATION**

**LOCATION MAP
CADWELL ROAD**

SCALE: SHEET OF SHEETS STA. TO STA.

F.A.S. RTE.	SECTION	COUNTY	TOTAL SHEETS	SHEET NO.
659	(8,14,14-1,14-2)	MOULTRIE	13	5
CONTRACT NO. 74869				
ILLINOIS FED. AID PROJECT				

PAVING SCHEDULE

LOCATION			LENGTH	WIDTH	BITUMINOUS SURFACE TREATMENT (PREVENTATIVE MAINTENANCE)
STATION	TO	STATION			
CADWELL ROAD (FAS 659)			FOOT	FOOT	SQ YD
1+29.00	TO	7+67.62	638.62	VAR.	2866.7
7+67.62	TO	27+71.62	2004.00	26.0	5789.3
27+71.62	TO	43+51.04	1579.42	28.0	4913.8
43+51.04	TO	44+60.18	109.14	26.0	315.3
44+60.18	TO	45+77.72	117.54	BRIDGE OMISSION	
45+77.72	TO	66+46.45	2068.73	26.0	5976.3
66+46.45	TO	67+56.21	109.76	BRIDGE OMISSION	
67+56.21	TO	154+16.12	8659.91	26.0	25017.5
154+16.12	TO	155+33.66	117.54	BRIDGE OMISSION	
155+33.66	TO	172+71.41	1737.75	26.0	5020.2
172+71.41	TO	174+51.72	180.31	BRIDGE OMISSION	
174+51.72	TO	227+31.10	5279.38	26.0	15251.5
227+31.10	TO	228+36.74	105.64	BRIDGE OMISSION	
228+36.74	TO	301+99.51	7362.77	26.0	21270.2
301+99.51	TO	302+99.51	100.00	RR OMISSION	
302+99.51	TO	430+85.00	12785.49	26.0	36935.9
430+85.00	TO	432+13.40	128.40	VAR.	490.6
TOTALS			43084.40		123847.3

PAVEMENT MARKING SCHEDULE

LOCATION			LENGTH	SHORT TERM PAVEMENT MARKING	THERMOPLASTIC PAVEMENT MARKING - LETTERS AND SYMBOLS	THERMOPLASTIC PAVEMENT MARKING - LINE 4"	THERMOPLASTIC PAVEMENT MARKING - LINE 8"	THERMOPLASTIC PAVEMENT MARKING - LINE 12"	THERMOPLASTIC PAVEMENT MARKING - LINE 24"	PAINT PAVEMENT MARKING - LINE 4"	
STATION	TO	STATION									
CADWELL ROAD (FAS 659)			FOOT	70300100	78000100	78000200	78000201	78000600	78000650	78001110	
1+29.00	TO	5+33.00	404.00	100		1974	100	351	45	875	
5+33.00	TO	11+57.00	624.00	160						2416	
11+57.00	TO	20+06.00	849.00	210						1780	
20+06.00	TO	31+93.00	1187.00	300						3858	
31+93.00	TO	37+95.00	602.00	150						2408	
37+95.00	TO	49+26.00	1131.00	280						3623	
49+26.00	TO	51+31.00	205.00	50						461	
51+31.00	TO	61+41.00	1010.00	250						3183	
61+41.00	TO	62+57.00	116.00	30						205	
62+57.00	TO	70+30.00	773.00	190						2392	
70+30.00	TO	226+23.00	15593.00	3900						35029	
226+23.00	TO	233+55.00	732.00	180						2239	
233+55.00	TO	235+61.00	206.00	50						464	
235+61.00	TO	242+68.00	707.00	180						2148	
242+68.00	TO	297+80.00	5512.00	1380						12402	
297+80.00	TO	301+99.51	419.51	100	61.2				36	1363	
301+99.51	TO	302+99.51	100.00	RR OMISSION							
302+99.51	TO	306+40.00	340.49	90	61.2				36	1107	
306+40.00	TO	430+85.00	12445.00	3110						27881	
430+85.00	TO	432+13.40	128.40	30			75	60	30	289	
TOTAL WHITE					122.4		175	271	147	85032	
TOTAL YELLOW				10740		1974		140		19091	
TOTALS			43084.40	10740	122.4	1974	175	411	147	104123	

SURVEY VAULTS

STATION	PROTECT OR RESET	SURVEY VAULT
CADWELL ROAD (FAS 659)		
6+27.86	1	0
11+26.50	1	0
29+31.62	1	0
41+91.04	1	0
51+39.45	1	0
62+15.32	1	0
63+08.46	1	0
73+15.55	1	0
73+36.81	1	0
74+15.17	1	0
83+28.57	1	0
86+50.25	1	0
112+86.66	1	0
139+31.78	1	0
150+98.95	1	0
188+48.72	1	0
196+70.32	1	0
219+04.36	1	0
245+58.47	0	1
247+82.01	1	0
258+86.39	1	0
272+12.14	1	0
298+74.35	0	1
324+02.38	1	0
325+36.66	1	0
326+32.39	1	0
340+54.85	1	0
343+53.61	1	0
364+25.13	1	0
374+81.20	1	0
379+02.16	0	1
379+03.30	0	1
379+82.14	1	0
392+53.84	1	0
393+74.88	1	0
403+82.86	1	0
405+66.26	0	1
TOTAL	32	5

RUMBLE STRIP SCHEDULE

LOCATION	RUMBLE STRIP	
	Z0055500	
CADWELL ROAD (FAS 659)	SQ FT	
8+45.00 SB	325.0	
9+45.00 SB	325.0	
14+45.00 SB	325.0	
423+40.00 NB	325.0	
426+80.00 NB	325.0	
427+80.00 NB	325.0	
TOTALS	1950.0	

MODEL: Default
 FILE NAME: P:\1108\B&E\BIDD\ITEC\Illinois.gov\PWIDOT\Documents\DOT_Offices\Director_7\Projects\74869\CADDData\CAD\sheets\174869-sht-rumble.dgn

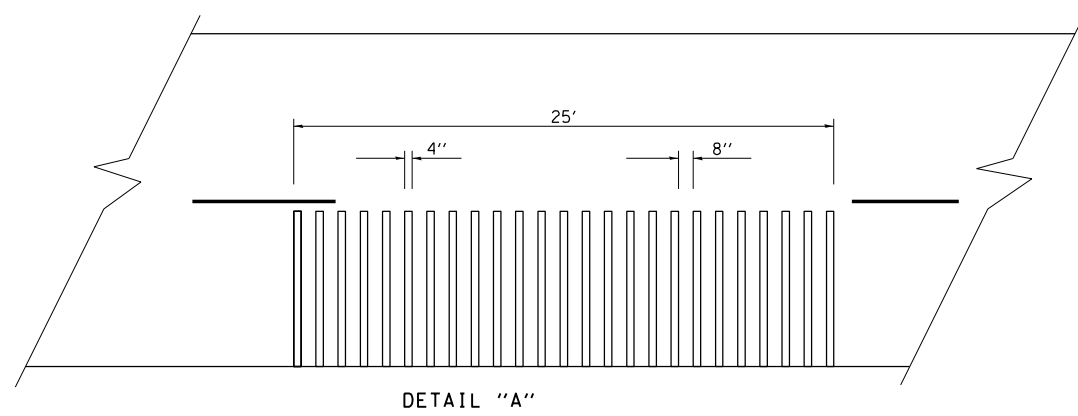
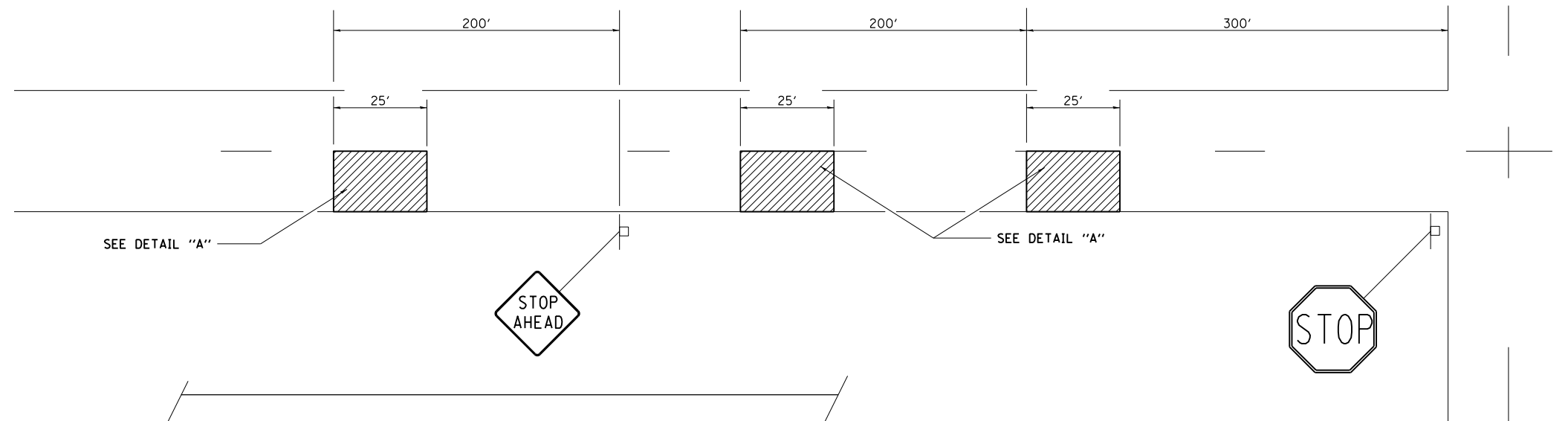
USER NAME = steffenmk	DESIGNED -	REVISED -
	DRAWN -	REVISED -
PLOT SCALE = 100.0000 ' / in.	CHECKED -	REVISED -
PLOT DATE = 10/15/2018	DATE -	REVISED -

**STATE OF ILLINOIS
 DEPARTMENT OF TRANSPORTATION**

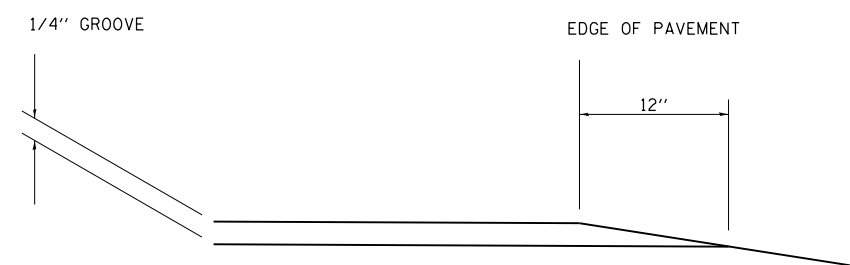
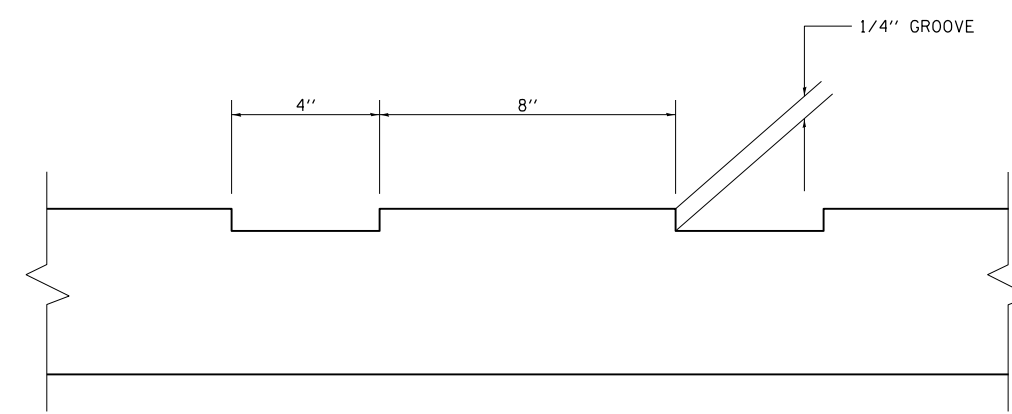
SCHEDULE OF QUANTITIES			
SCALE:	SHEET 2	OF 2	SHEETS
	STA.	TO STA.	

659	SECTION	COUNTY	TOTAL SHEETS	SHEET NO.
659	(8,14,14-1,14-2) PVMT PRSV	MOULTRIE	13	7
			CONTRACT NO. 74869	
		ILLINOIS	FED. AID PROJECT	

TYPICAL RUMBLE STRIP APPLICATION IN ADVANCE OF AN INTERSECTION



NOTE: THE 25 FEET RUMBLE AREA HAS 4" WIDE GROOVES SAWED INTO THE PAVEMENT, SEPARATED BY 8" OF EXISTING PAVEMENT. THE SAW CUTS SHALL EXTEND 12" INTO THE SHOULDER TO ALLOW FOR DRAINAGE.



NOT TO SCALE

DISTRICT 7 DETAIL NO. Z0055300

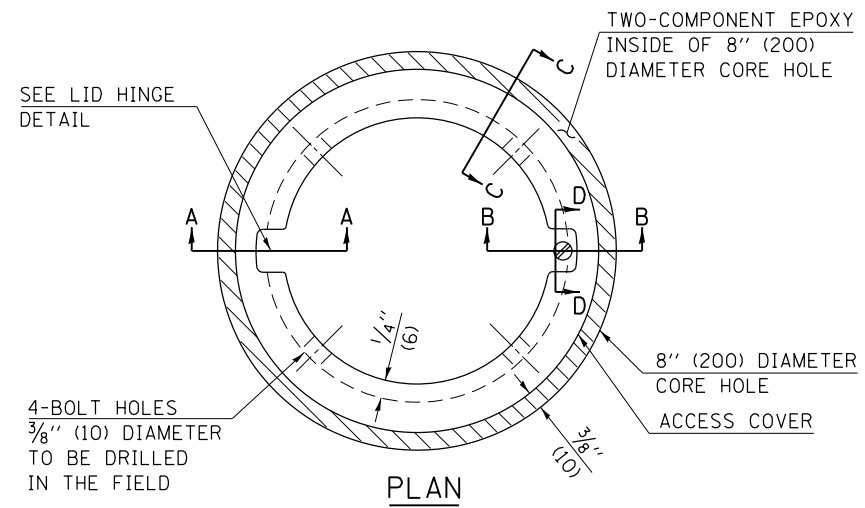
FILE NAME =	USER NAME = steffenmk	DESIGNED -	REVISED - MMO 12-99
pw:\IL\084EBIDINTEG.illinois.gov\PIWIDOT\Documents\IDOT Offices\District 7\Projects\74869\Drawings\CADsheets\074869-shd-details.dwg		DRAWN -	REVISED - MKS 04-08
	PLOT SCALE = 2.0000' / in.	CHECKED -	REVISED -
	PLOT DATE = 10/15/2018	DATE -	REVISED -

**STATE OF ILLINOIS
DEPARTMENT OF TRANSPORTATION**

TYPICAL RUMBLE STRIP APPLICATION

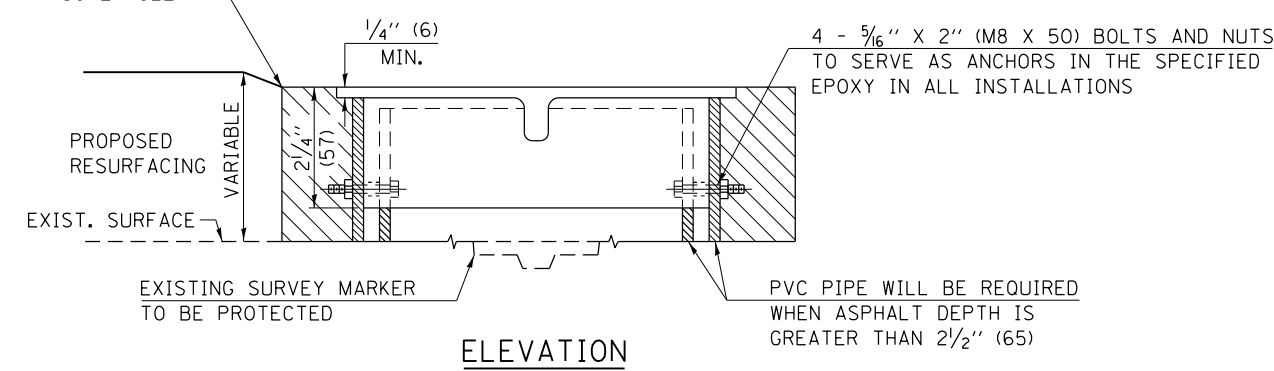
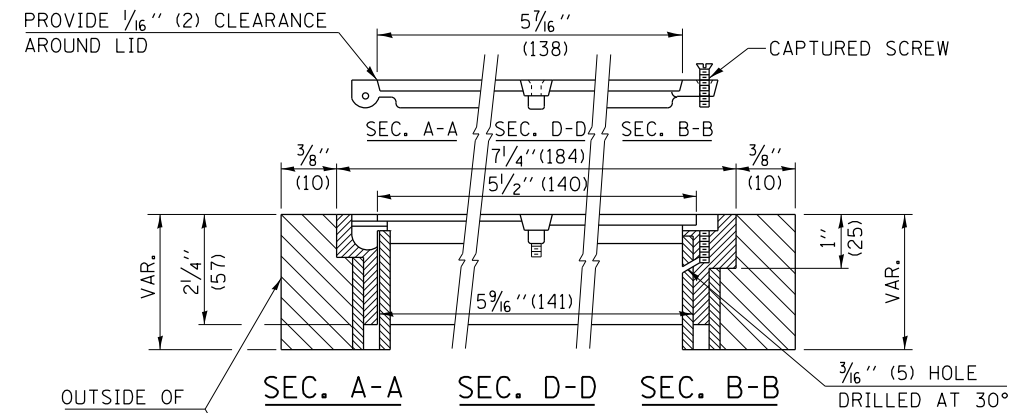
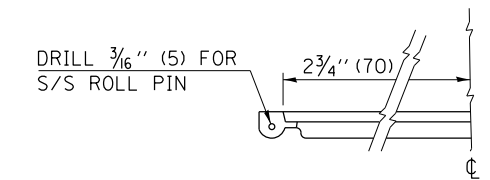
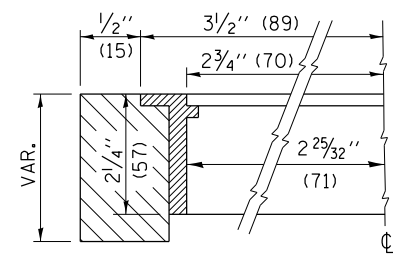
SCALE: SHEET NO. OF SHEETS STA. TO STA.

F.A.S. RTE.	SECTION	COUNTY	TOTAL SHEETS	SHEET NO.
659	(8,14,14-1,14-2) PVMT PRSV	MOULTRIE	13	8
CONTRACT NO. 74869				
FED. ROAD DIST. NO. ILLINOIS FED. AID PROJECT				

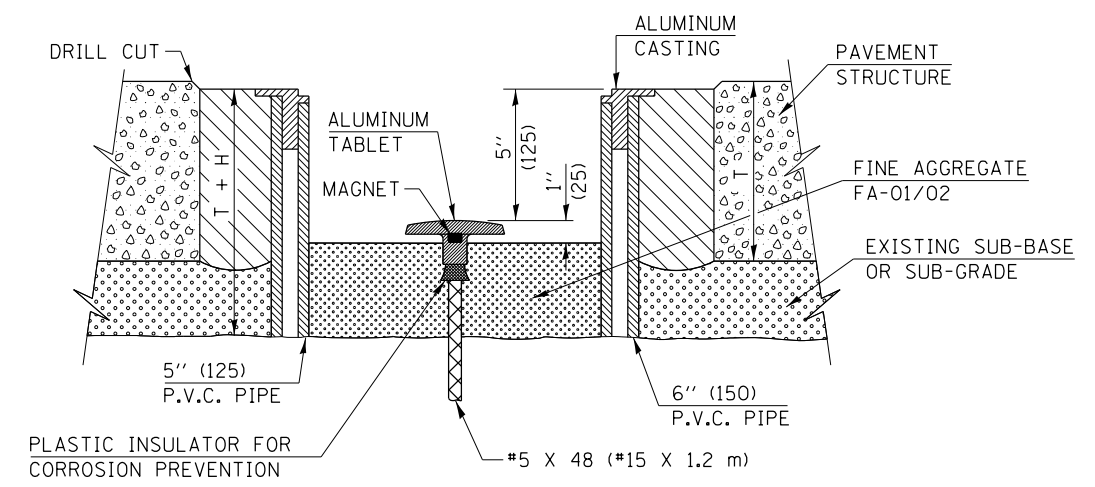


- LEGEND**
- ALUMINUM CASTING
 - 5" (125) OR 6" (150) P.V.C. PIPE
 - TWO-COMPONENT EPOXY
- T = THICKNESS OF PAVEMENT STRUCTURE
- H = THE THICKNESS OF THE SUB-BASE GRANULAR + 1" (25)

BILL OF MATERIAL	
ALUMINUM CASTING OF THE DIMENSIONS AND SPECIFICATIONS SHOWN OR OTHER SUBJECT TO ENGINEER'S APPROVAL OF SHOP DRAWINGS,	
4 EACH - 5/16" X 2" (M8 X 50) BOLTS WITH NUTS, EPOXY,	
5" OR 6" (125 mm OR 150 mm) DIAMETER P.V.C. PIPE, SCHEDULE 40 (WHEN REQUIRED).	



EXISTING SURVEY MARKER



PROPOSED SURVEY MARKER

NOT TO SCALE

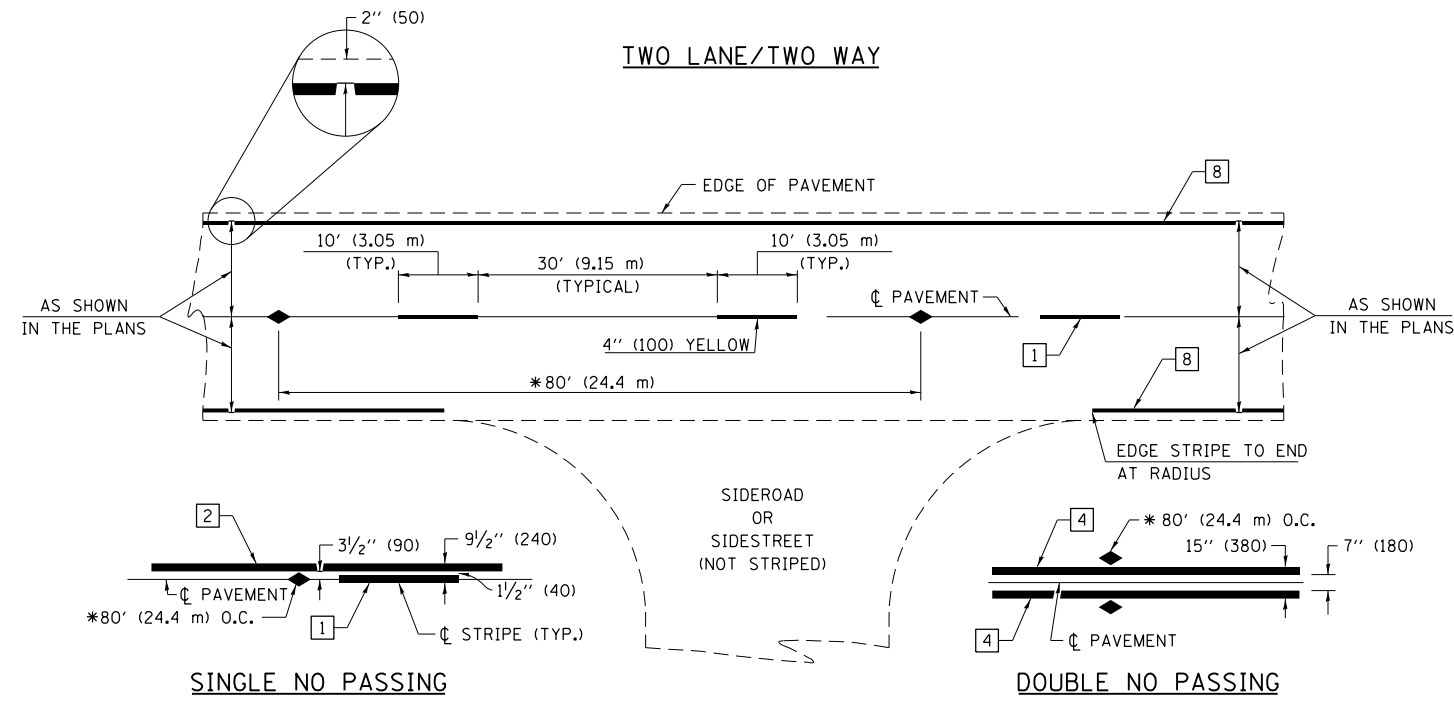
Note: All dimensions are in INCHES (millimeters) unless otherwise shown.

FILE NAME =	USER NAME = steffenk	DESIGNED -	REVISED -
pw:\11084EBIDINTEG.illinois.gov\PI\DOT\Documents\DOT Offices\District 7\Projects\74869\Drawings\CABsheets\074869-shd-details.dwg		DRAWN -	REVISED -
	PLOT SCALE = 2.0000' / in.	CHECKED -	REVISED -
	PLOT DATE = 10/15/2018	DATE -	REVISED -

STATE OF ILLINOIS
DEPARTMENT OF TRANSPORTATION

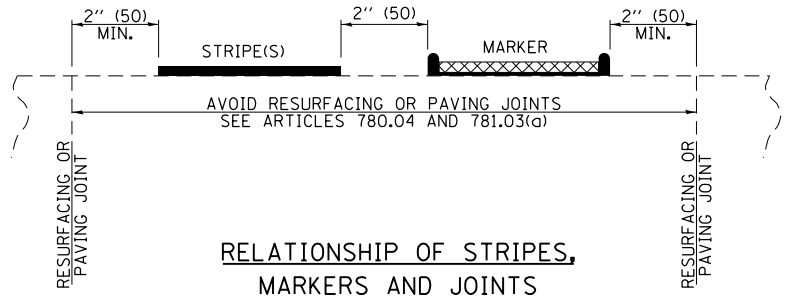
SURVEY MARKER VAULT			
SCALE:	SHEET NO.	OF SHEETS	STA. TO STA.

DISTRICT 7 DETAIL NO. Z0070202				
F.A.S. RTE.	SECTION	COUNTY	TOTAL SHEETS	SHEET NO.
659	(8,14,14-1,14-2)	PVMT PRSV	MOULTRIE	13 9
			CONTRACT NO. 74869	
FED. ROAD DIST. NO. ILLINOIS FED. AID PROJECT				



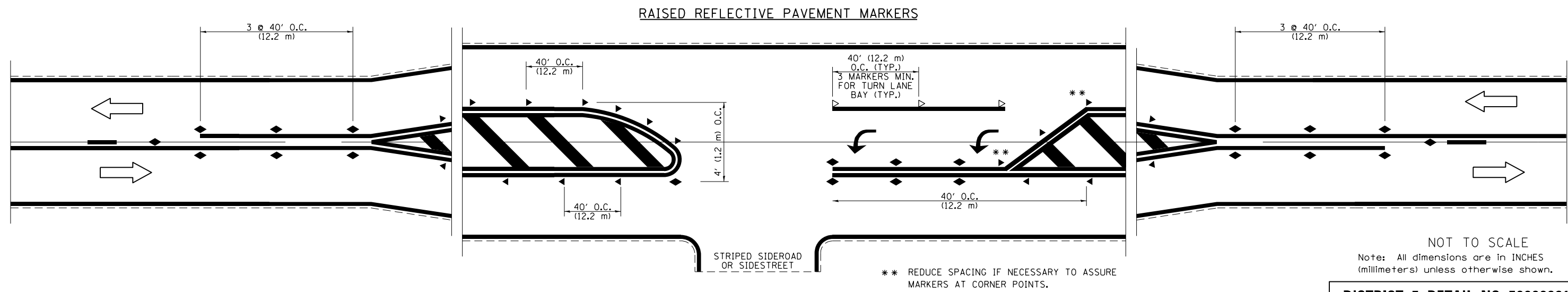
PAVEMENT MARKING LEGEND

- 1 4" (100) SKIP-DASH (YELLOW)
- 2 4" (100) SOLID (YELLOW)
- 3 12" (300) DIAGONAL (YELLOW)
- 4 4" (100) DOUBLE YELLOW (NARROW)
- 5 12" (300) SOLID WHITE
- 6 RESERVED
- 7 6" (150) SKIP-DASH (WHITE)
- 8 4" (100) SOLID (WHITE)
- 9 12" (300) DIAGONAL (WHITE)
- 10 6" (150) SOLID (WHITE)
- 11 24" (600) STOP BAR (WHITE)
- 12 8" (200) SOLID (WHITE)
- 13 4" (100) PARKING WHITE

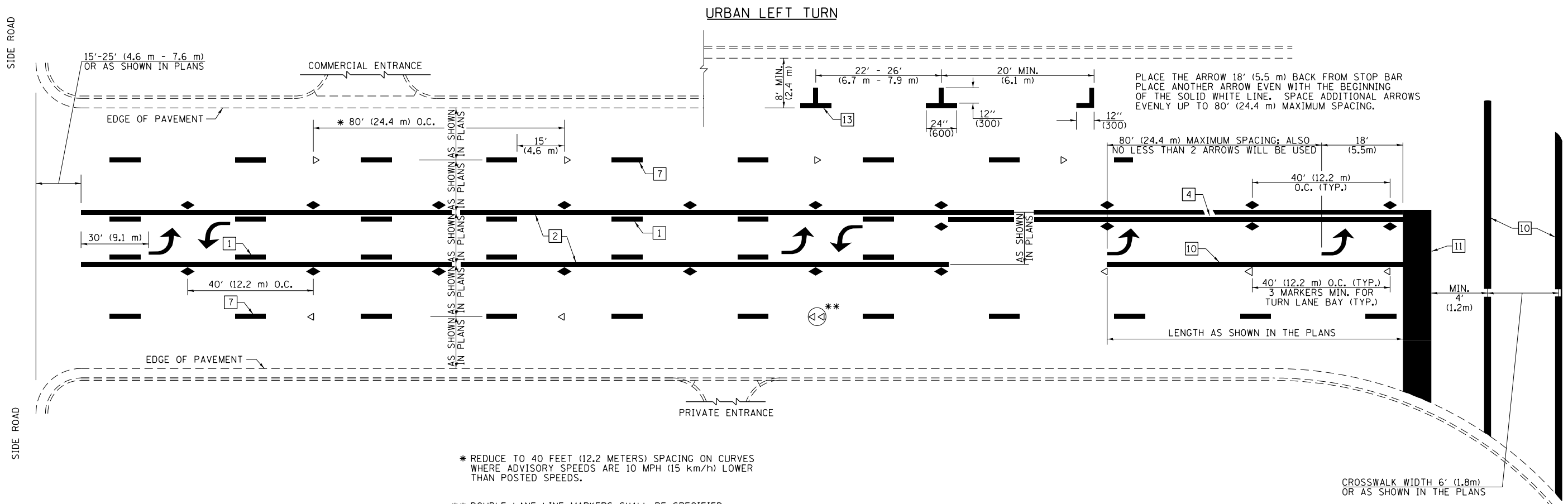


TYPICAL PAVEMENT MARKERS LEGEND

- ◆ TWO-WAY AMBER MARKER
- ▶ ONE-WAY AMBER MARKER
- ▷ ONE-WAY CRYSTAL MARKER



NOT TO SCALE
 Note: All dimensions are in INCHES (millimeters) unless otherwise shown.



PLACE THE ARROW 18' (5.5 m) BACK FROM STOP BAR
 PLACE ANOTHER ARROW EVEN WITH THE BEGINNING
 OF THE SOLID WHITE LINE. SPACE ADDITIONAL ARROWS
 EVENLY UP TO 80' (24.4 m) MAXIMUM SPACING.

* REDUCE TO 40 FEET (12.2 METERS) SPACING ON CURVES
 WHERE ADVISORY SPEEDS ARE 10 MPH (15 km/h) LOWER
 THAN POSTED SPEEDS.

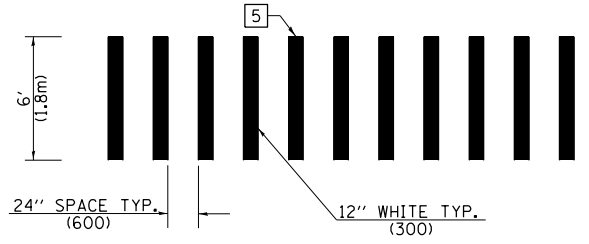
** DOUBLE LANE LINE MARKERS SHALL BE SPECIFIED
 AND SPACED AS SHOWN IN HIGHWAY STANDARD
 781001 FOR MULTI-LANE DIVIDED AND UNDIVIDED
 HIGHWAYS.

PAVEMENT MARKING LEGEND

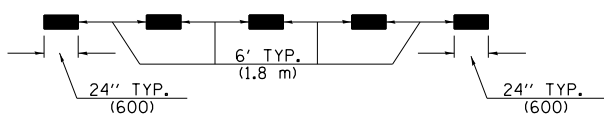
- 1 4" (100) SKIP-DASH (YELLOW)
- 2 4" (100) SOLID (YELLOW)
- 3 12" (300) DIAGONAL (YELLOW)
- 4 4" (100) DOUBLE YELLOW (NARROW)
- 5 12" (300) SOLID WHITE
- 6 RESERVED
- 7 6" (150) SKIP-DASH (WHITE)
- 8 4" (100) SOLID (WHITE)
- 9 12" (300) DIAGONAL (WHITE)
- 10 6" (150) SOLID (WHITE)
- 11 24" (600) STOP BAR (WHITE)
- 12 8" (200) SOLID (WHITE)
- 13 4" (100) PARKING WHITE

GENERAL NOTES

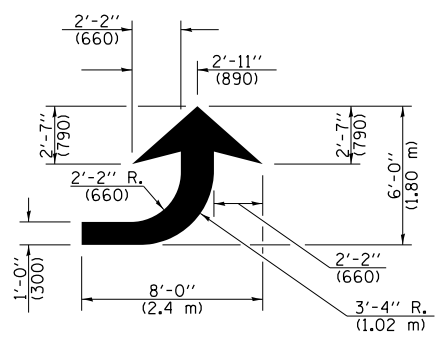
1. TURN ARROW PAIRS SHALL BE PLACED AT 250' (75 m) INTERVALS AND SHALL BE EVENLY SPACED BETWEEN BOTH ENDS OF THE BIDIRECTIONAL LEFT TURN LANE. USE A MINIMUM OF TWO PAIRS PER BLOCK.
2. THE SOLID YELLOW PAVEMENT MARKINGS [2] SHOULD GENERALLY START OR END NEAR THE RADIUS POINT OF EACH STREET RETURN EXCEPT WHERE ONE OR BOTH ENDS WOULD INCLUDE STOP BARS.
3. THE SKIP-DASH PAVEMENT MARKINGS [1] OR [7] SHOULD BE CENTERED BETWEEN BOTH ENDS OF EACH CITY BLOCK AND SHALL BE PLACED SO THEY LINE UP ACROSS FROM EACH OTHER.
4. USE LARGE ARROW SIZE FOR BOTH RURAL AND URBAN LOCATIONS. (SEE LAST PAGE OF SECTION 780x FOR SYMBOLS TABLE)
5. LANE LINE EXTENSIONS SHALL BE THE SAME COLOR AND WIDTH AS THE LANE LINE BEING EXTENDED.



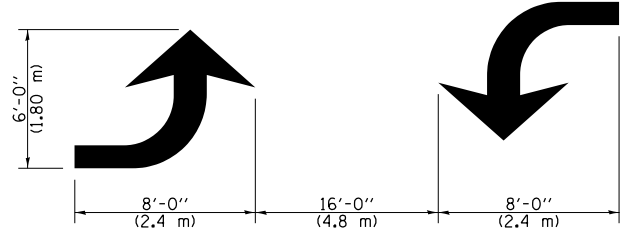
**CROSSWALK DETAIL
 (DECATUR CITY LIMITS ONLY)**



LANE LINE EXTENSIONS



LEFT ARROW
 REVERSE FOR RIGHT ARROW
 AREA = 15.6 SQ. FT. (1.47 m²)
 (WHITE)



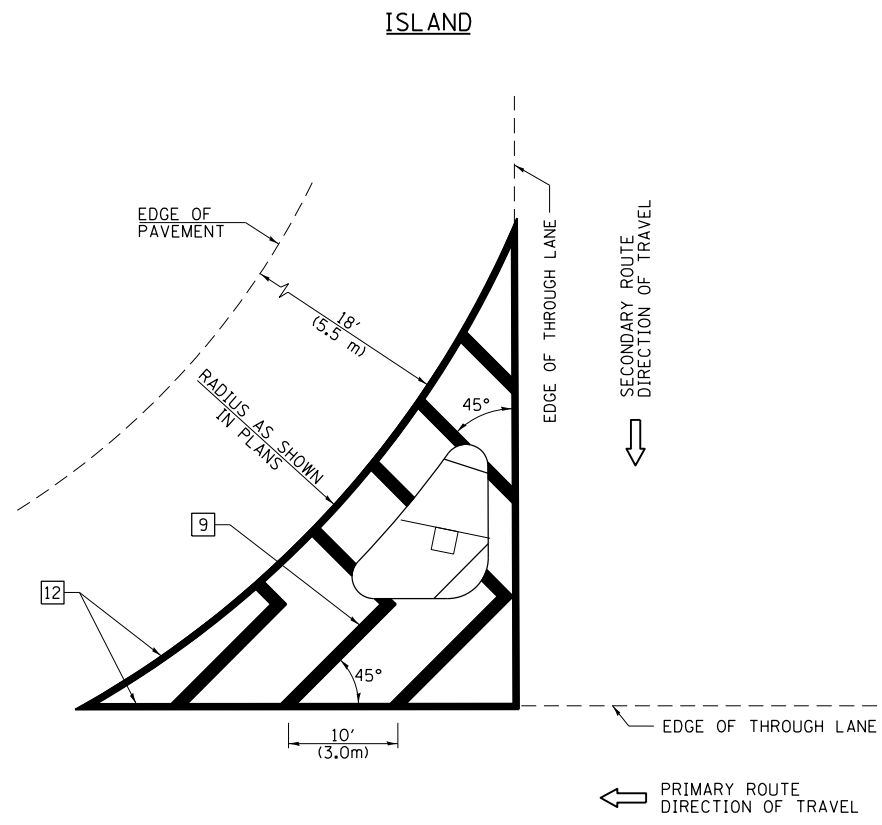
**TYPICAL DOUBLE
 TURN ARROWS (WHITE)**

NOT TO SCALE

Note: All dimensions are in INCHES (millimeters) unless otherwise shown.

DISTRICT 7 DETAIL NO. 7800001

FILE NAME =	USER NAME = steffenmk	DESIGNED -	REVISED -	STATE OF ILLINOIS DEPARTMENT OF TRANSPORTATION	PAVEMENT MARKING AND RAISED REFLECTIVE PAVEMENT MARKERS (RURAL & URBAN APPLICATIONS)	F.A.S. RTE.	SECTION	COUNTY	TOTAL SHEETS	SHEET NO.	
pw\11084EBIDINTEG.illinois.gov\PIWIDOT\Documents\DOT Offices\District 7\Projects\74869\Drawings\CAD\Drawings\74869-shd-details.dwg	PLT SCALE = 2.0000' / in.	CHECKED -	REVISED -			659	(8,14,14-1,14-2) PVMT PRSV	MOULTRIE	13	11	
PLT DATE = 10/15/2018	DATE -	REVISED -				CONTRACT NO. 74869					
						ILLINOIS FED. AID PROJECT					

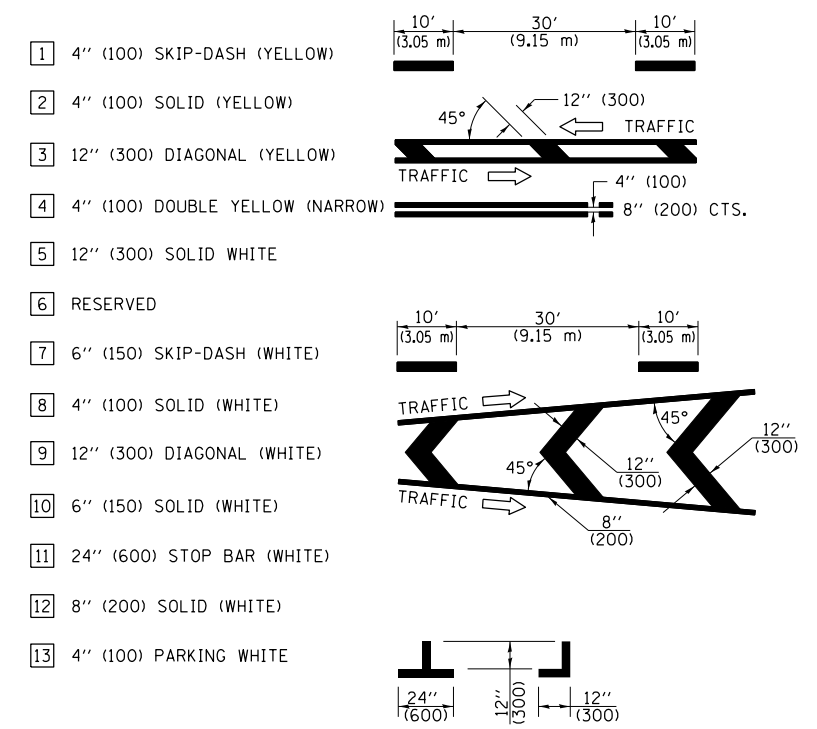


GENERAL NOTES

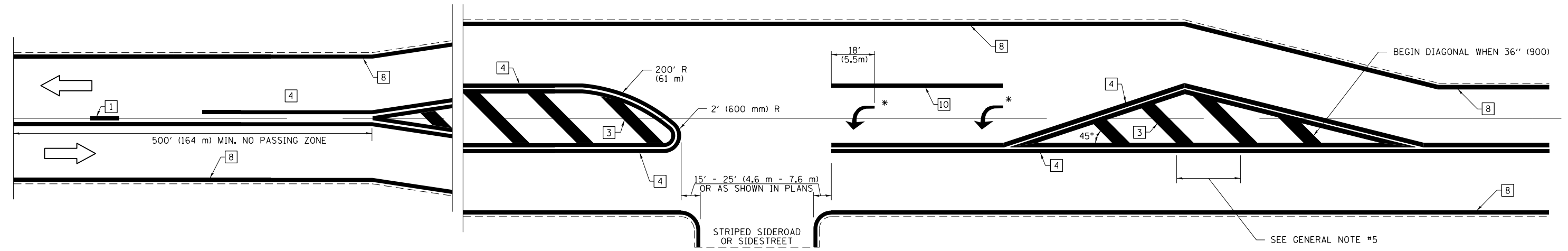
1. RAISED AND CORRUGATED MEDIANS SHALL BE OUTLINED WITH [2] IF PRESENT.
2. SOME OF THE INFORMATION INCLUDED WITH THIS DETAIL MAY NOT BE APPLICABLE TO THIS IMPROVEMENT.
3. PAVEMENT MARKINGS ARE TO BE EXTENDED THROUGH OMISSIONS WHEN APPLICABLE.
4. FINAL PAVEMENT MARKINGS SHALL BE IN PLACE PRIOR TO PLACING ANY RAISED REFLECTIVE PAVEMENT MARKERS.
5. THE FOLLOWING CRITERIA SHALL BE USED FOR SELECTING THE DIAGONAL PAVEMENT MARKING SPACING:

< 30 MPH (< 50 km/h)	15' (4.5 m)
30-45 MPH (50-75 km/h)	20' (6.0 m)
> 45 MPH (> 75 km/h)	30' (9.0 m)

PAVEMENT MARKING LEGEND



RURAL LEFT TURN STRIPING



* PLACE AN ARROW 18' (5.5 m) BACK FROM STOP BAR. PLACE ANOTHER ARROW EVEN WITH THE BEGINNING OF THE SOLID WHITE LINE. SPACE ADDITIONAL ARROWS EVENLY UP TO 80' (24.4 m) MAXIMUM SPACING. USE MINIMUM OF 2 ARROWS.

NOT TO SCALE
 Note: All dimensions are in INCHES (millimeters) unless otherwise shown.

DISTRICT 7 DETAIL NO. 7800001

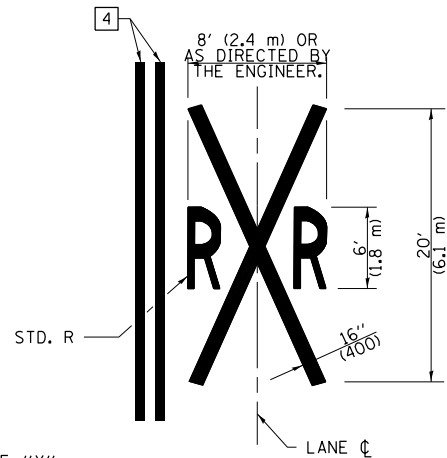
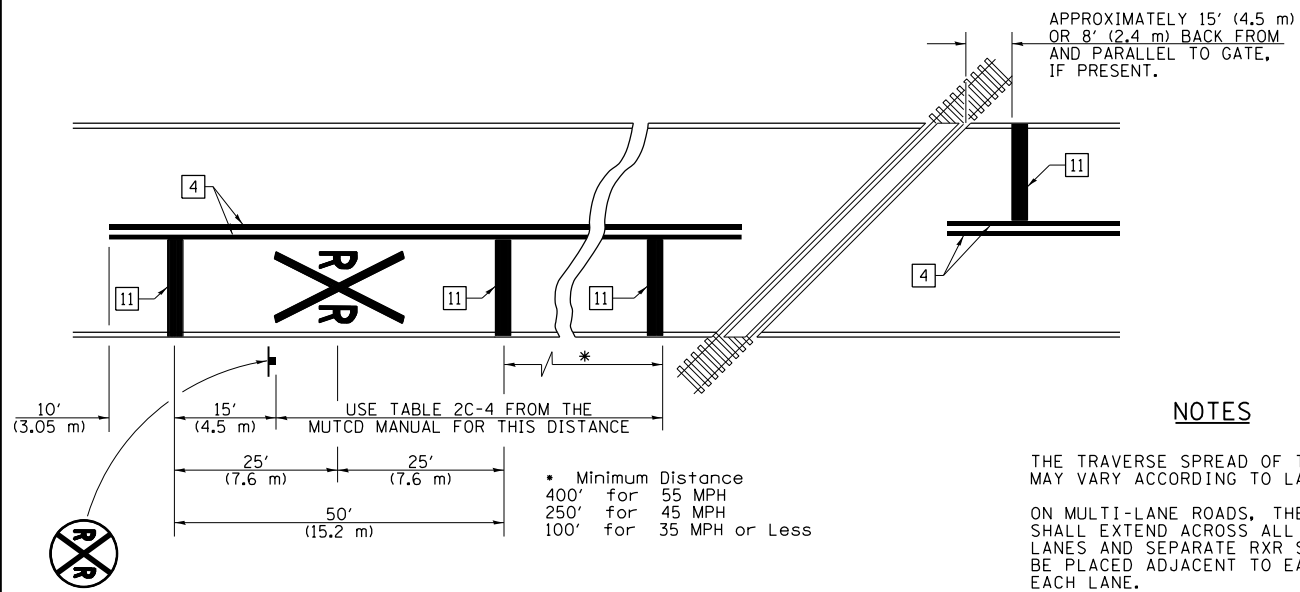
FILE NAME =	USER NAME = steffenmk	DESIGNED -	REVISED -
pw:\IL\084EBIDINTEG\illinois.gov\PWIDOT\Documents\IDOT Offices\District 7\Projects\74869\Drawings\CABsheets\074869-shd-details.dwg		DRAWN -	REVISED -
	PLOT SCALE = 2.0000" / in.	CHECKED -	REVISED -
	PLOT DATE = 10/15/2018	DATE -	REVISED -

**STATE OF ILLINOIS
 DEPARTMENT OF TRANSPORTATION**

**PAVEMENT MARKING AND RAISED REFLECTIVE PAVEMENT MARKERS
 (RURAL & URBAN APPLICATIONS)**
 SCALE: SHEET NO. 3 OF 4 SHEETS STA. TO STA.

F.A.S. RTE.	SECTION	COUNTY	TOTAL SHEETS	SHEET NO.
659	(8,14,14-1,14-2) PVMT PRSV	MOULTRIE	13	12
CONTRACT NO. 74869				
ILLINOIS FED. AID PROJECT				

PAVEMENT MARKINGS AT RAILROAD-HIGHWAY GRADE CROSSING



NOTES

THE TRAVERSE SPREAD OF THE "X" MAY VARY ACCORDING TO LANE WIDTH.

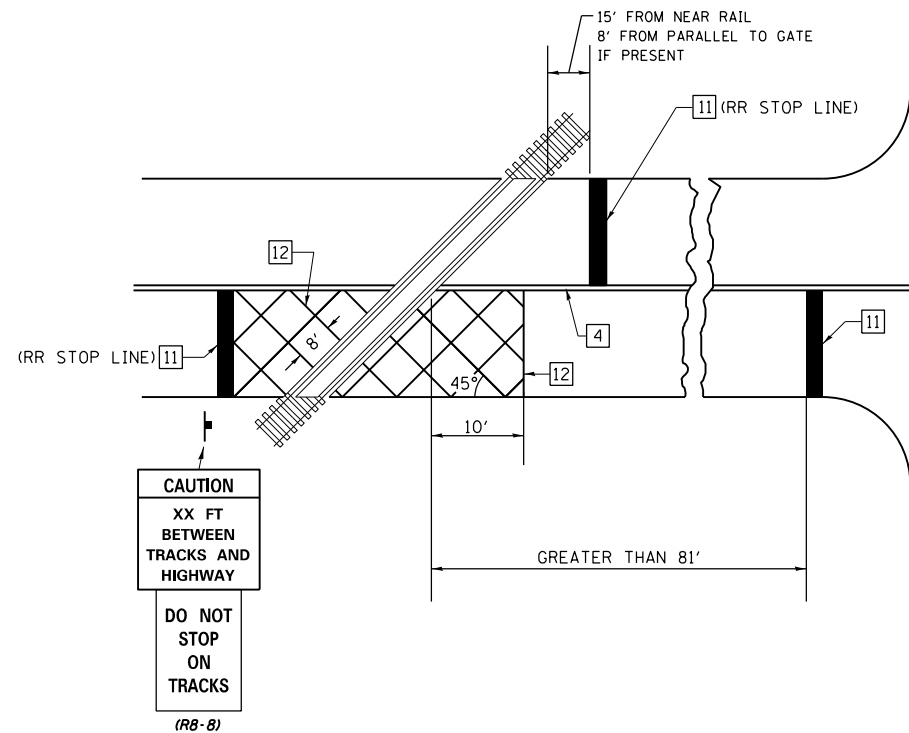
ON MULTI-LANE ROADS, THE STOP LINES SHALL EXTEND ACROSS ALL APPROACH LANES AND SEPARATE RXR SYMBOLS SHALL BE PLACED ADJACENT TO EACH OTHER IN EACH LANE.

WHEN THE PAVEMENT MARKING SYMBOL IS USED, A PORTION OF THE SYMBOL SHOULD BE LOCATED DIRECTLY ADJACENT TO THE ADVANCE WARNING SIGN (W10-1) AS PLACED BY TABLE II-1, CONDITION B OF THE MUTCD.

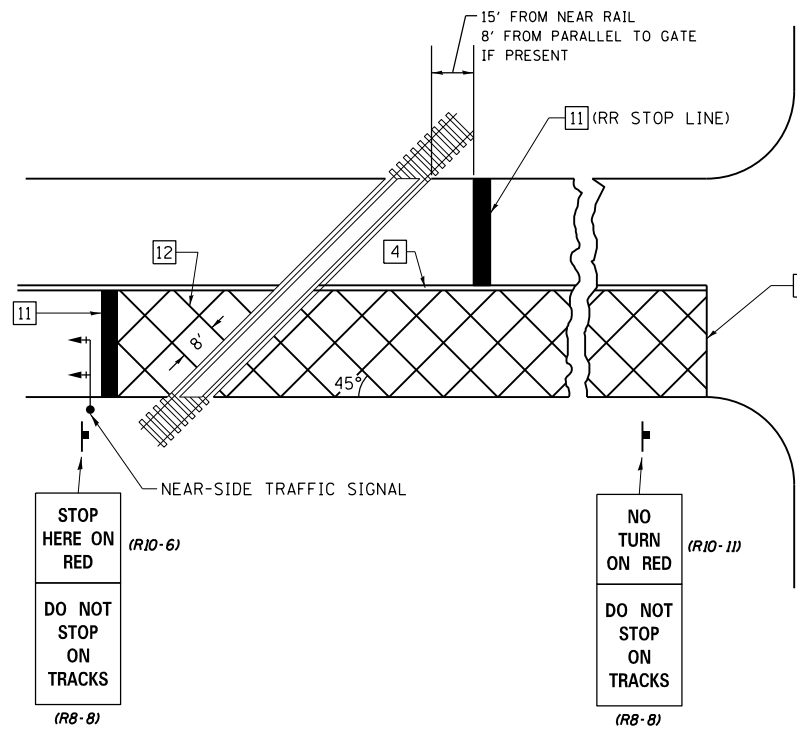
PAVEMENT MARKING LEGEND

- 1 4" (100) SKIP-DASH (YELLOW)
- 2 4" (100) SOLID (YELLOW)
- 3 12" (300) DIAGONAL (YELLOW)
- 4 4" (100) DOUBLE YELLOW (NARROW)
- 5 12" (300) SOLID WHITE
- 6 RESERVED
- 7 6" (150) SKIP-DASH (WHITE)
- 8 4" (100) SOLID (WHITE)
- 9 12" (300) DIAGONAL (WHITE)
- 10 6" (150) SOLID (WHITE)
- 11 24" (600) STOP BAR (WHITE)
- 12 8" (200) SOLID (WHITE)
- 13 4" (100) PARKING WHITE

RAILROAD CROSSING WITH INTERCONNECT ONLY



RAILROAD CROSSING WITH INTERCONNECT AND PRE-SIGNALS



SUPPLEMENTAL PAVEMENT MARKING TREATMENT FOR RAILROAD-HIGHWAY GRADE CROSSING

GENERAL NOTES

- SUPPLEMENTAL PAVEMENT MARKINGS TO BE INSTALLED ONLY ON APPROACHES TO INTERSECTIONS CONTROLLED BY TRAFFIC SIGNALS WHICH ARE INTERCONNECTED WITH THE RAILROAD WARNING SIGNALS.
- EXTEND PAVEMENT MARKINGS TO THE INTERSECTION ONLY WHERE NEAR-SIDE TRAFFIC SIGNALS ARE USED.

NOT TO SCALE

Note: All dimensions are in INCHES (millimeters) unless otherwise shown.

DISTRICT 7 DETAIL NO. 7800001

FILE NAME =	USER NAME = steffenmk	DESIGNED -	REVISED -	STATE OF ILLINOIS DEPARTMENT OF TRANSPORTATION	PAVEMENT MARKING AND RAISED REFLECTIVE PAVEMENT MARKERS (RURAL & URBAN APPLICATIONS)	F.A.S. RTE.	SECTION	COUNTY	TOTAL SHEETS	SHEET NO.	
pw\11\084EBIDINTEG.illinois.gov\PIWIDOT\Documents\IDOT Offices\District 7\Projects\74869\Drawings\CAD\Drawings\74869-shd-details.dwg	PLotted	CHECKED -	REVISED -			659	(8,14,14-1,14-2)	PVMT PRSV	MOULTRIE	13	13
PLOT SCALE = 2.0000' / in.	DATE = 10/15/2018	DATE -	REVISED -			CONTRACT NO. 74869					
						ILLINOIS FED. AID PROJECT					

SCALE: SHEET NO. 4 OF 4 SHEETS STA. TO STA.