

STATE OF ILLINOIS
DEPARTMENT OF TRANSPORTATION

F.A.S. RATE	SECTION	COUNTY	TOTAL SHEETS	SHEET NO.
2703	D7 AGG SHLD 2019-1	CLAY	4	1
		CONTRACT NO. 74892		

D-97-007-19

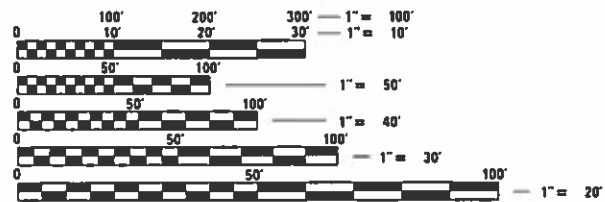
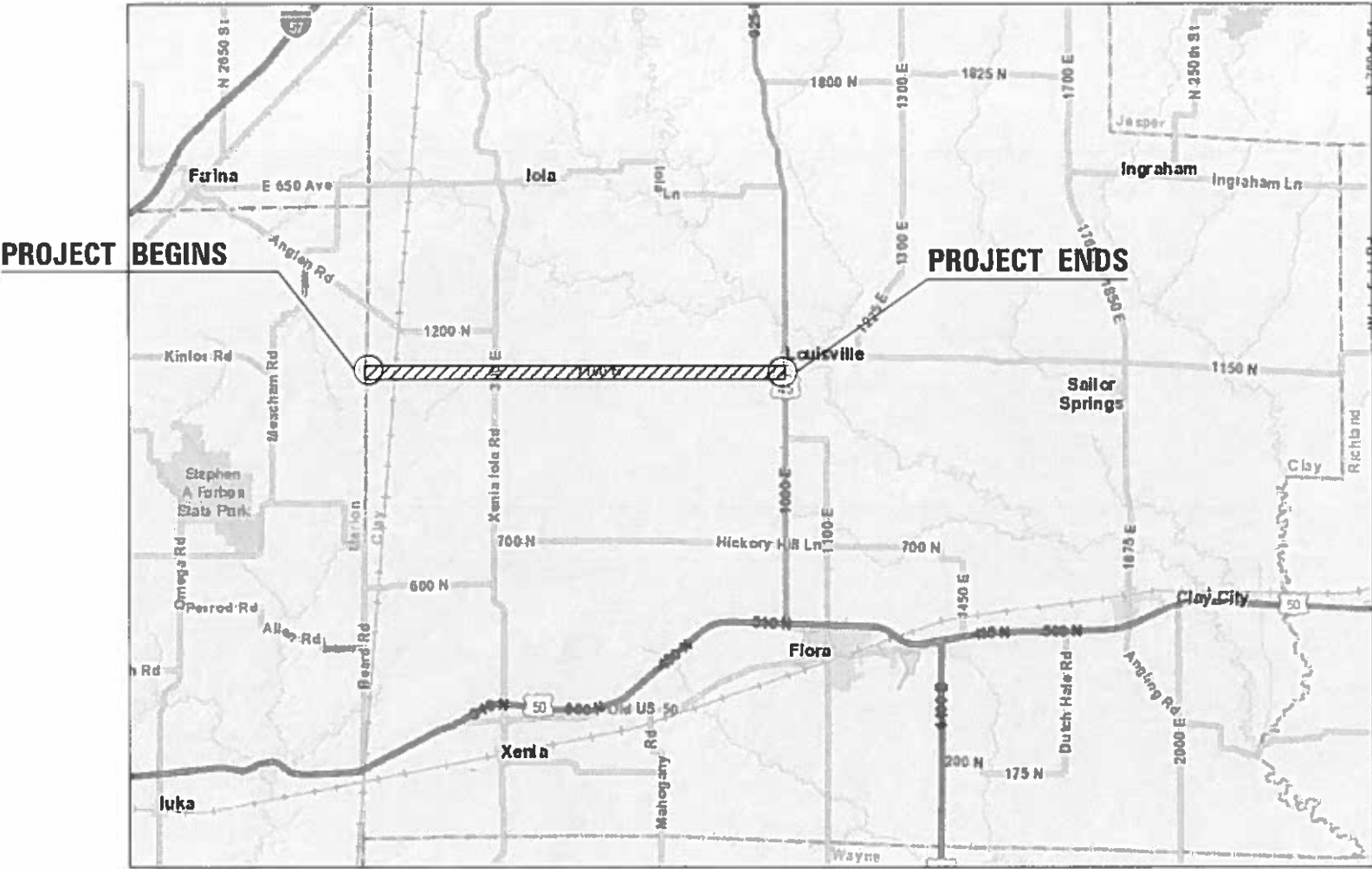


**PROPOSED
HIGHWAY PLANS**

F.A.S. ROUTE 2703
SECTION D7 AGG SHLD 2019-1
SHOULDER RECONSTRUCTION
CLAY COUNTY

C-97-016-19

FOR INDEX OF SHEETS, SEE SHEET NO. 2



FULL SIZE PLANS HAVE BEEN PREPARED USING STANDARD ENGINEERING SCALES. REDUCED SIZED PLANS WILL NOT CONFORM TO STANDARD SCALES. IN MAKING MEASUREMENTS ON REDUCED PLANS, THE ABOVE SCALES MAY BE USED.

J.U.L.I.E.
JOINT UTILITY LOCATION INFORMATION FOR EXCAVATION
1-800-892-0123
OR 811

PROJECT ENGINEER: TOM RONAN
PROJECT MANAGER: TOM RONAN
PHONE: (217) 342-8320
CONTRACT NO. 74892

STATE OF ILLINOIS
DEPARTMENT OF TRANSPORTATION

SUBMITTED October 16 20 18
Jeffrey M. Smith
REGIONAL ENGINEER

Dec 7 20 18
EA. ETK
ENGINEER OF DESIGN AND ENVIRONMENT

Dec 7 20 18
Paul P. Chis
DIRECTOR OF HIGHWAYS PROJECT IMPLEMENTATION

PRINTED BY THE AUTHORITY
OF THE STATE OF ILLINOIS

INDEX OF SHEETS

SHEET NO.	ITEM
1	COVER SHEET
2	INDEX OF SHEETS, GENERAL NOTES AND SHOULDER DETAIL
3	SUMMARY OF QUANTITIES
4	LOCATION MAP

THE FOLLOWING STANDARDS ARE A PART OF THESE PLANS AND ARE INCLUDED AFTER SHEET NO. 4:

STD. NO.	DESCRIPTION
000001-07	STANDARD SYMBOLS, ABBREVIATIONS AND PATTERNS
406201-01	MAILBOX TURNOUT
701001-02	OFF-ROAD OPERATIONS, 2L, 2W, MORE THAT 15' AWAY
701006-05	OFF-RD OPERATIONS, 2L, 2W, 15' TO 24" FROM PAVEMENT EDGE
701011-04	OFF-RD MOVING OPERATIONS, 2L,2W, DAY ONLY
701301-04	LANE CLOSURE, 2L, 2W, SHORT TIME OPERATIONS
701306-04	LANE CLOSURE, 2L, 2W, SLOW MOVING OPERATIONS, DAY ONLY, FOR SPEEDS ≥ 45 MPH
701311-03	LANE CLOSURE, 2L, 2W, MOVING OPERATIONS - DAY ONLY
701901-08	TRAFFIC CONTROL DEVICES

GENERAL NOTES

THIS PROJECT IS LOCATED ON THE KINMUNDY/LOUISVILLE BLACKTOP IN CLAY COUNTY. THE PROJECT STARTS AT THE MARION COUNTY LINE AND EXTENDS EAST FOR APPROXIMATELY 10.17 MILES TO US ROUTE 45 IN LOUISVILLE.

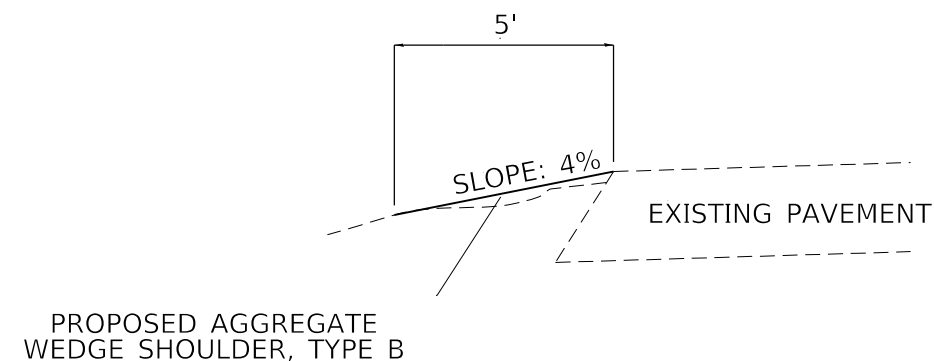
THE WORK INCLUDED IN SECTION D7 AGG SHLD 2019-1 CONSISTS OF PLACING AGGREGATE WEDGE SHOULDERS, TRAFFIC CONTROL, AND ANY OTHER WORK NECESSARY TO COMPLETE THE SECTION.

ALL MATERIAL USED FOR AGGREGATE WEDGE SHOULDERS, TYPE B SHALL BE CRUSHED STONE WITH A MINIMUM IBR OF 80.

AGGREGATE FOR MAILBOX TURNOUTS AND PRIVATE ENTRANCES SHALL BE PLACED AS DIRECTED BY THE ENGINEER AND WILL BE PAID FOR AS AGGREGATE WEDGE SHOULDERS, TYPE B.

A RATE OF APPLICATION OF 2.05 TONS/CU YD FOR GRANULAR MATERIAL HAS BEEN USED IN CALCULATING PLAN QUANTITY.

SHOULDER DETAIL



MODEL: Default
FILE NAME: P:\IL08\B&E\DOT\TEC\Illinois.gov\PI\DOT\Documents\DOT_Offices\Director_7\Projects\74892\CADD\Drawings\DOT_74892-SH-GenNotes.dgn

USER NAME = steffenmk	DESIGNED -	REVISED -
	DRAWN -	REVISED -
PLOT SCALE = 100.0000 ' / in.	CHECKED -	REVISED -
PLOT DATE = 10/16/2018	DATE -	REVISED -

STATE OF ILLINOIS
DEPARTMENT OF TRANSPORTATION

INDEX OF SHEETS, GENERAL NOTES,
AND SHOULDER DETAIL

SCALE: SHEET OF SHEETS STA. TO STA.

F.A.S. RTE.	SECTION	COUNTY	TOTAL SHEETS	SHEET NO.
2703	D7 AGG SHLD 2019-1	CLAY	4	2
CONTRACT NO. 74892			ILLINOIS FED. AID PROJECT	

