

STATE OF ILLINOIS
DEPARTMENT OF TRANSPORTATION

R.I.E.	SECTION	COUNTY	TOTAL SHEETS	SHEET NO.
*	(68-2) D-4 & (68-3) Q-2	MONTGOMERY	7	1
		ILLINOIS	CONTRACT NO. 72K91	

* FAS 2729, FAI 55

D-96-010-19



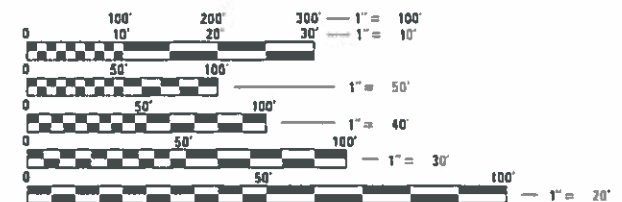
LOCATION OF SECTION INDICATED THIS: - [Symbol] -

PROPOSED IMPROVEMENTS

FAS 2729, FAI 55 (I-55 W FR RD, I-55 E FR RD)
SECTION: (68-2) Q-4 & (68-3) Q-2
(W FR RD) BIT SURFACE TREATMENT-A2,
HALF SMART RESURFACING & (E FR RD)
BIT SURFACE TREATMENT-A2, HALF SMART
RESURFACING
MONTGOMERY CO
C-96-012-19

FOR INDEX OF SHEETS, SEE SHEET NO. 2

FAS 2729 (W FR RD) ADT = 1150 SU = 1.57% MU = 1.65%
FAI 55 (E FR RD) ADT = 900 SU = 4.00% MU = 6.21%

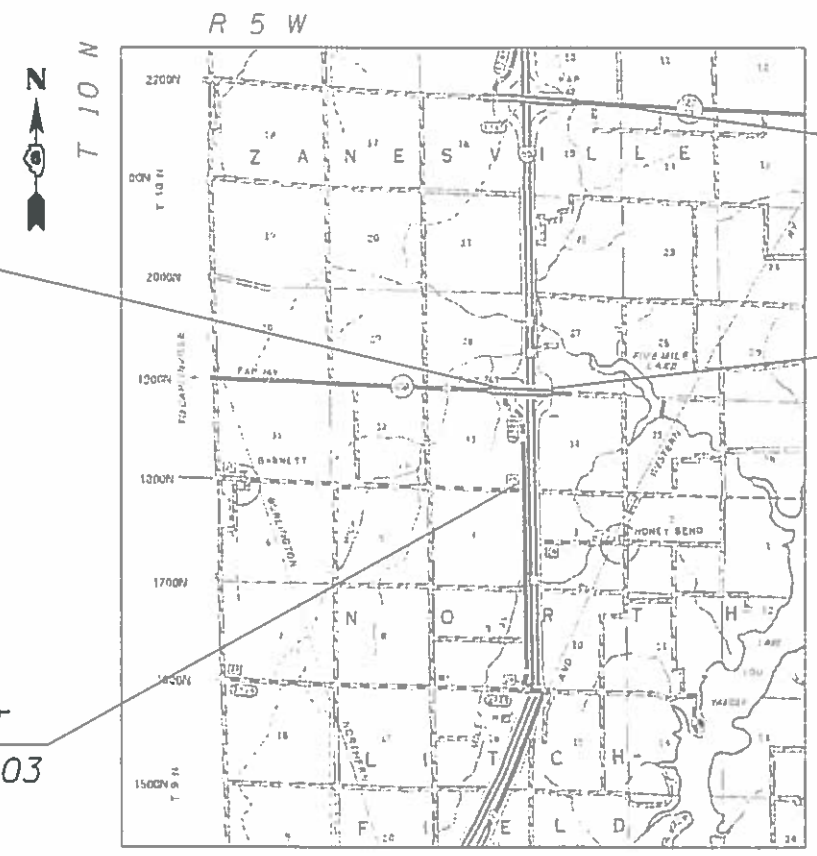


FULL SIZE PLANS HAVE BEEN PREPARED USING STANDARD ENGINEERING SCALES. REDUCED SIZED PLANS WILL NOT CONFORM TO STANDARD SCALES. IN MAKING MEASUREMENTS ON REDUCED PLANS, THE ABOVE SCALES MAY BE USED.

J.U.L.I.E.
JOINT UTILITY LOCATION INFORMATION FOR EXCAVATION
1-800-892-0123
OR 811

BEGIN PROJECT
STA. 446+18.03

END PROJECT
STA. 507+12.03



BEGIN PROJECT
STA. 385+75.02

SEE LOCATION MAP FOR STATION EQUATIONS

END PROJECT
STA. 658+45.42

GROSS LENGTH=23,365 FT=4.425 MI
NET LENGTH=23,365 FT=4.425 MI

PROJECT ENGINEER : MIKE IRWIN - (217)524-7765
PROJECT MANAGER : TIM SHARP - (217)524-9160

CONTRACT NO. 72K91

STATE OF ILLINOIS
DEPARTMENT OF TRANSPORTATION

SUBMITTED *October 26th 2018*

Jeffrey M. South
REGIONAL ENGINEER

Dec 7th 2018
A. ETK
ENGINEER OF DESIGN AND ENVIRONMENT

Dec 7th 2018
DIRECTOR OF HIGHWAYS PROJECT IMPLEMENTATION

PRINTED BY THE AUTHORITY
OF THE STATE OF ILLINOIS

INDEX OF SHEETS

SHEET NO.	DESCRIPTION
1.	COVER SHEET
2.	INDEX OF SHEETS, STANDARDS, GENERAL NOTES & SIGNATURES
3.	SUMMARY OF QUANTITIES
4.	SCHEDULES OF QUANTITIES
5.	PROJECT LOCATION MAP
6.	PROJECT TYPICAL SECTIONS
7.	PAVING DETAIL

STANDARDS

STANDARD NO.	DESCRIPTION
701006-05	OFF-ROAD OPERATIONS, 2L, 2W, 15' (4.5m) TO 24" (600mm) FROM EDGE OF PAVMENT
701201-05	LANE CLOSURE, 2L, 2W, DAY ONLY, FOR SPEEDS ≥ 45 MPH
701306-04	LANE CLOSURE, 2L, 2W, SLOW MOVING OPERATIONS DAY ONLY, FOR SPEEDS ≥ 45 MPH
701311-03	LANE CLOSURE, 2L, 2W, MOVING OPERATIONS, DAY ONLY
701901-08	TRAFFIC CONTROL DEVICES

NOTES:

COVER AND SEAL COAT AGGREGATE SHALL BE CRUSHED LIMESTONE.

D-6 OPERATIONS WILL PLACE PERMANENT PAVEMENT MARKINGS.

CONTRACTOR SHALL PLACE AGGREGATE SHOULDERS, TYPE B, PRIOR TO BITUMINOUS SURFACE TREATMENTS A2.

**STATE OF ILLINOIS
DEPARTMENT OF TRANSPORTATION
DIVISION OF HIGHWAYS
DISTRICT 6**

EXAMINED October 25th 20 18

[Signature]
ENGINEER OF OPERATIONS

EXAMINED August 31st 20 18

[Signature]
ENGINEER OF PROJECT IMPLEMENTATION

EXAMINED October 11 20 18

[Signature]
ENGINEER OF PROGRAM DEVELOPMENT

MIXTURE REQUIREMENTS

LOCATION:	FAS 2729, FAI 55
MIXTURE USE(S):	LEVELING BINDER
PG:	58 - 28
DESIGN AIR VOIDS:	4.0% @ N50
MIXTURE COMPOSITION:	IL 9.5
FRICTION AGGREGATE:	N/A
QUALITY MANAGEMENT:	QC/QA
SUBLOT SIZE:	N/A

* FAS 2729, FAI 55

FILE NAME	USER NAME	DESIGNED	REVISED	STATE OF ILLINOIS DEPARTMENT OF TRANSPORTATION		INDEX OF SHEETS, STANDARDS GENERAL NOTES, SIGNATURES		RTE.	SECTION	COUNTY	TOTAL SHEETS	SHEET NO.
S:\CONTRMAINT\CAD\72K91 - 1-55 - MONTGOMERY CD. - HALF SMART & A2\PLANS\72K91-shr-2-9-18.dgn	nicholsonj	-	-	STATE OF ILLINOIS DEPARTMENT OF TRANSPORTATION		INDEX OF SHEETS, STANDARDS GENERAL NOTES, SIGNATURES		*	168-21 0-4 & (68-3) 0-2	MONTGOMERY	7	2
PLOT SCALE = 40.0000 1/ in.		CHECKED -	REVISED -	SCALE: _____ SHEET ____ OF ____ SHEETS		STA. _____ TO STA. _____		ILLINOIS FED. AID PROJECT				
PLOT DATE = 10/31/2018		DATE -	REVISED -					CONTRACT NO. 72K91				

CODE NO.	ITEM	UNIT	TOTAL QUANTITY	0-01625-6009	0-01625-6010
				100% STATE	100% STATE
				MONTGOMERY	MONTGOMERY
				ROADWAY	ROADWAY
				0005	0005
				RURAL	RURAL
40300400	BITUMINOUS MATERIALS (COVER AND SEAL COATS)	TON	191	50	141
40300500	COVER COAT AGGREGATE	TON	779	203	576
40300600	SEAL COAT AGGREGATE	TON	623	163	460
40600290	BITUMINOUS MATERIALS (TACK COAT)	POUND	28038	7313	20725
40600625	LEVELING BINDER (MACHINE METHOD), N50	TON	3198	694	2504
48101200	AGGREGATE SHOULDERS, TYPE B	TON	1774	463	1311
40600990	TEMPORARY RAMP	SQ YD	32	16	16
67100100	MOBILIZATION	L SUM	1	0.5	0.5
70100450	TRAFFIC CONTROL AND PROTECTION, STANDARD 701201	L SUM	1	0.5	0.5
70100460	TRAFFIC CONTROL AND PROTECTION, STANDARD 701306	L SUM	1	0.5	0.5
44201747	CLASS D PATCHES, TYPE IV, 8 INCH	SQ YD	1870	750	1120
44201765	CLASS D PATCHES, TYPE II, 10 INCH	SQ YD	225	225	0

* FAS 2729, FAI 55

REV. - MS

FILE NAME = S:\CONTRMAINT_CAD\72K91 - 1-55 - MONTGOMERY CO. - HALF SMART & AZ\PLANS\72K91-shr-0621.dwg	USER NAME = nicholsonj	DESIGNED -	REVISED -	STATE OF ILLINOIS DEPARTMENT OF TRANSPORTATION	SUMMARY OF QUANTITIES	RTG.	SECTION	COUNTY	TOTAL SHEETS	SHEET NO.
PLOT SCALE = 1/8" = 1'-0"	CHECKED -	REVISED -	* (68-2) 0-4 & (68-3) 0-2			MONTGOMERY	7	3		
PLOT DATE = 10/30/2018	DATE -	REVISED -	CONTRACT NO. 72K91							
SCALE: _____ SHEET _____ OF _____ SHEETS STA. _____ TO STA. _____						ILLINOIS FED. AID PROJECT				

40300400 BITUMINOUS MATERIALS (COVER AND SEAL COATS)					
STA.	TO	STA.	LENGTH	WIDTH	AREA
FAI 55 (EAST FR RD)			FT	FT	SQ YD
385+75.02 TO 405+98.22			2023.2	24	5395.20
STA. EQ. 405+98.22=1505+98.22			-		
1505+98.22 TO 1565+55.52			5957.3	24	15886.13
STA. EQ. 1565+55.52=1565+56.14			-		
1565+56.14 TO 1587+09.47			2153.33	24	5742.21
STA. EQ. 1587+09.47=1587+08.25			-		
1587+08.25 TO 1624+40.37			3732.12	24	9952.32
STA. EQ. 1624+40.37=624+40.37			-		
624+40.37 TO 658+45.42			3405.05	24	9080.13
FAS 2729 (WEST FR RD)					
446+18.03 TO 507+12.03			6094	24	16250.67
TOTAL			23365		62306.67
COVER COAT (0.32TON/SQ YD * 8.5PPG) (1TON=2000POUND)					
RATE	PPG	POUND	AREA	TON	
0.32	8.5	2000	62306.67	84.74	
SEAL COAT (0.40TON/SQ YD * 8.5PPG) (1TON=2000POUND)					
RATE	PPG	POUND	AREA	TON	
0.4	8.5	2000	62306.67	105.92	
TOTAL COVER COAT + SEAL COAT (TON)				191	

40300500 COVER COAT AGGREGATE		
AREA	RATE	TON
SQ YD	TON/SQ YD	
62306.67	0.0125	779

40300600 SEAL COAT AGGREGATE		
AREA	RATE	TON
SQ YD	TON/SQ YD	
62306.67	0.01	623

STATION	40600990	TEMPORARY RAMP	
	LENGTH (1:40)	WIDTH	(SQ YD)
	(FEET)	(FEET)	
FAI 55 (EAST FR RD)			
385+75.02	3	24	8
658+45.42	3	24	8
FAS 2729 (WEST FR RD)			
446+18.03	3	24	8
507+12.03	3	24	8
TOTAL			32

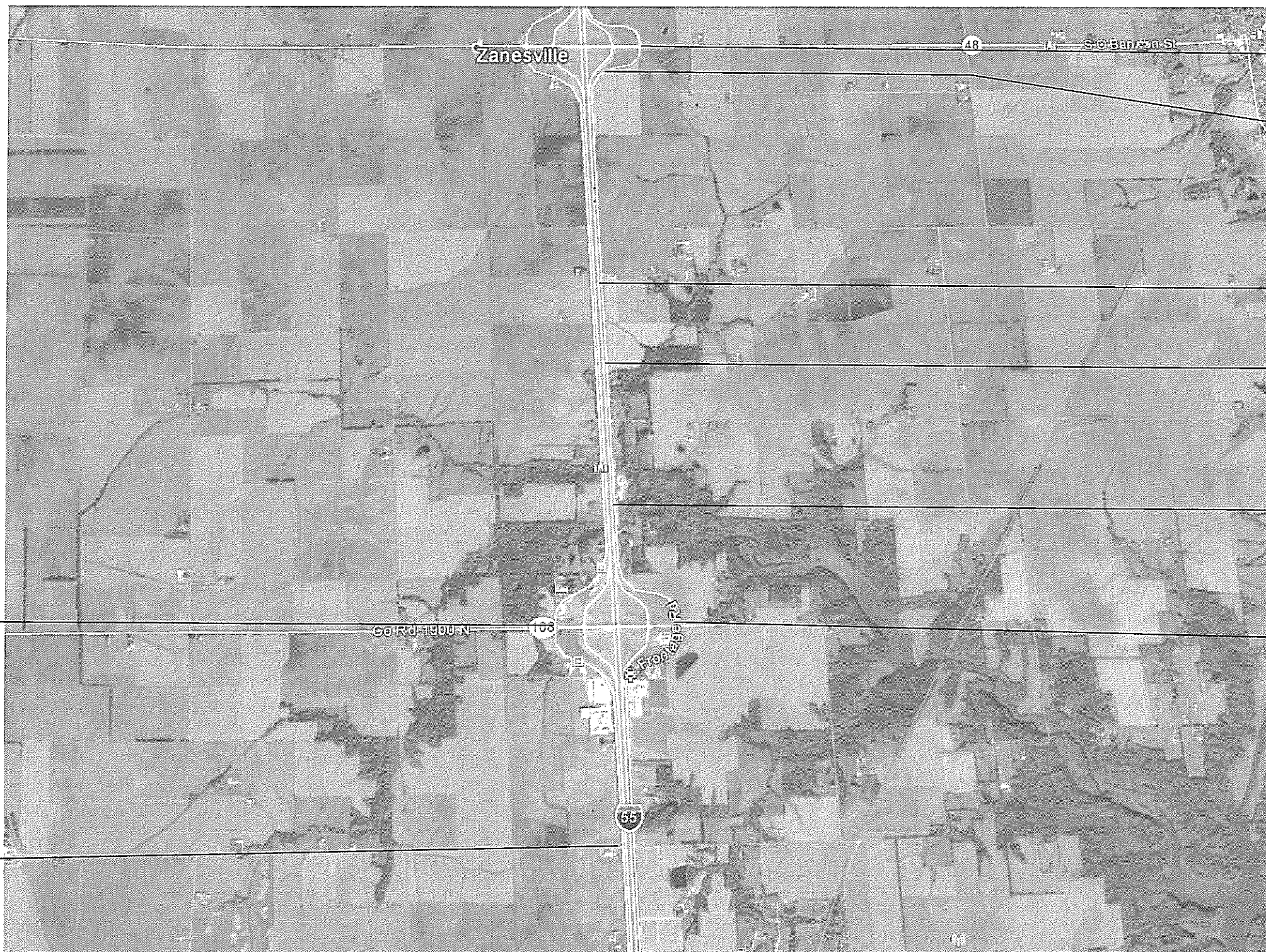
40600290 BITUMINOUS MATERIALS (TACK COAT)							
STA.	TO	STA.	LENGTH	WIDTH	AREA	RATE	POUNDS
FAI 55 (EAST FR RD)			FT	FT	SQ FT	POUND/SQ FT	
385+75.02 TO 405+98.22			2023.2	24	48556.80	0.05	2428
STA. EQ. 405+98.22=1505+98.22			-				
1505+98.22 TO 1565+55.52			5957.3	24	142975.20	0.05	7149
STA. EQ. 1565+55.52=1565+56.14			-	24			
1565+56.14 TO 1587+09.47			2153.33	24	51679.92	0.05	2584
STA. EQ. 1587+09.47=1587+08.25			-	24			
1587+08.25 TO 1624+40.37			3732.12	24	89570.88	0.05	4479
STA. EQ. 1624+40.37=624+40.37			-	24			
624+40.37 TO 658+45.42			3405.05	24	81721.20	0.05	4086
FAS 2729 (WEST FR RD)							
446+18.03 TO 507+12.03			6094	24	146256.00	0.05	7313
TOTAL							28038

44201765	CLASS D PATCHES, TYPE II, 10 INCH	SQ YD
	FAS 2729 (WEST FR RD)	225
44201747	CLASS D PATCHES, TYPE IV, 8 INCH	SQ YD
	FAI 55 (EAST FR RD)	1120
	FAS 2729 (WEST FR RD)	750
	TOTAL	1870

40600625 LEVELING BINDER (MACHINE METHOD), N50								
STA.	TO	STA.	LENGTH	WIDTH	AREA	DEPTH	RATE	
FAI 55 (EAST FR RD)			FT	FT	SQ FT	INCH	TON/CU YD	TON
385+75.02 TO 405+98.22			2023.2	24	48556.8	0	2.05	0
STA. EQ. 405+98.22=1505+98.22			-					
1505+98.22 TO 1508+98.22			300	24	7200.0	0	2.05	0
1508+98.22 TO 1565+55.52			5657.3	24	135775.2	0.75	2.05	644
STA. EQ. 1565+55.52=1565+56.14			-					
1565+56.14 TO 1587+09.47			2153.33	24	51679.9	0.75	2.05	245
STA. EQ. 1587+09.47=1587+08.25			-					
1587+08.25 TO 1616+21.42			2913.17	24	69916.1	0.75	2.05	332
1616+21.42 TO 1624+40.37			818.95	24	19654.8	2	2.05	249
STA. EQ. 1624+40.37=624+40.37			-					
624+40.37 TO 658+45.42			3405.05	24	81721.2	2	2.05	1034
FAS 2729 (WEST FR RD)								
446+18.03 TO 507+12.03			6094	24	146256.0	0.75	2.05	694
TOTAL								3198

48101200 AGGREGATE SHOULDERS, TY. B (2" TO 1")				
LENGTH	WIDTH	DEPTH	RATE	TON
FT	FT	FT	TON/CU YD	
23365	4	0.125	2.05	1774

• FAS 2729, FAI 55



BEGIN PROJECT
W FR RD
STA. 446+18.03

END PROJECT
W FR RD
STA. 507+12.03

BEGIN PROJECT E FR RD
STA. 385+75.02

STA. EQ. 405+98.22bk
=1505+98.22ah

STA. EQ. 1565+55.52bk
=1565+56.14ah

STA. EQ. 1587+09.47bk
=1587+08.25ah

STA. EQ. 1624+40.37bk
=624+40.37ah

END PROJECT E FR RD
STA. 658+45.42

• FAS 2729, FAI 55

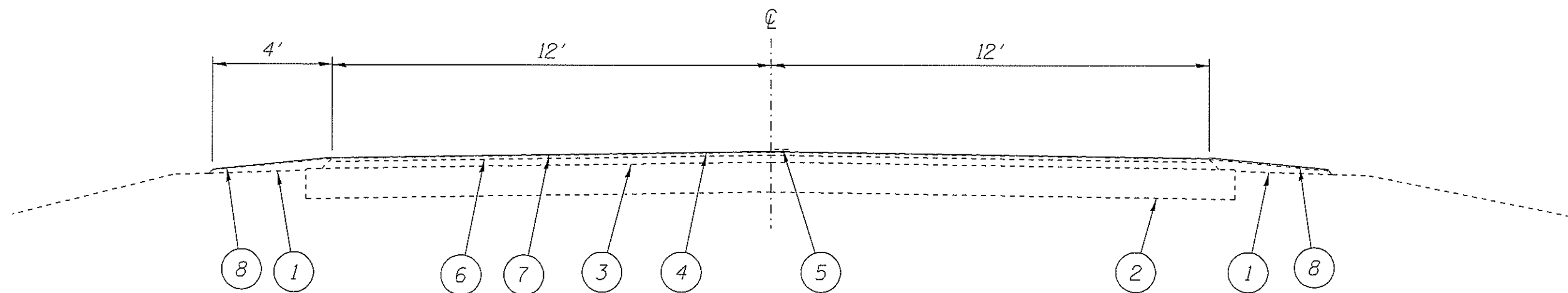
FILE NAME = S:\CONTRACTS\72K91 - 1-55 - MONTGOMERY CO. - HALF SHARY & A2\PLANS\72K91-ah-1	USER NAME = nicholson1	DESIGNED - _____	REVISED - _____
DRAWN - _____	CHECKED - _____	REVISED - _____	REVISED - _____
DATE - _____	DATE - _____	REVISED - _____	REVISED - _____
Default	PLT DATE = 10/30/2018		

STATE OF ILLINOIS
DEPARTMENT OF TRANSPORTATION

LOCATION MAP

SCALE: _____ SHEET _____ OF _____ SHEETS STA. _____ TO STA. _____

RTE.	SECTION	COUNTY	TOTAL SHEETS	SHEET NO.
•	(68-2) 0-4 & (68-3) 0-2	MONTGOMERY	7	5
			CONTRACT NO. 72K91	
ILLINOIS FED. AID PROJECT				



L E G E N D

- 1 - EXIST. AGGREGATE SHOULDERS, TYPE B
- 2 - EXIST. STABILIZED OR CONCRETE BASE COURSE
- 3 - EXIST. BITUMINOUS SURFACE
- 4 - EXIST. BITUMINOUS SURFACE TREATMENT (CLASS A-1)
- 5 - EXIST. PAINT PAVEMENT MARKING - LINE 5"
- 6 - PROPOSED BITUMINOUS SURFACE TREATMENT (CLASS A-2)
- 7 - PROPOSED LEVELING BINDER VAR 0-2"*
- 8 - PROPOSED AGG SHOULDER TYPE B

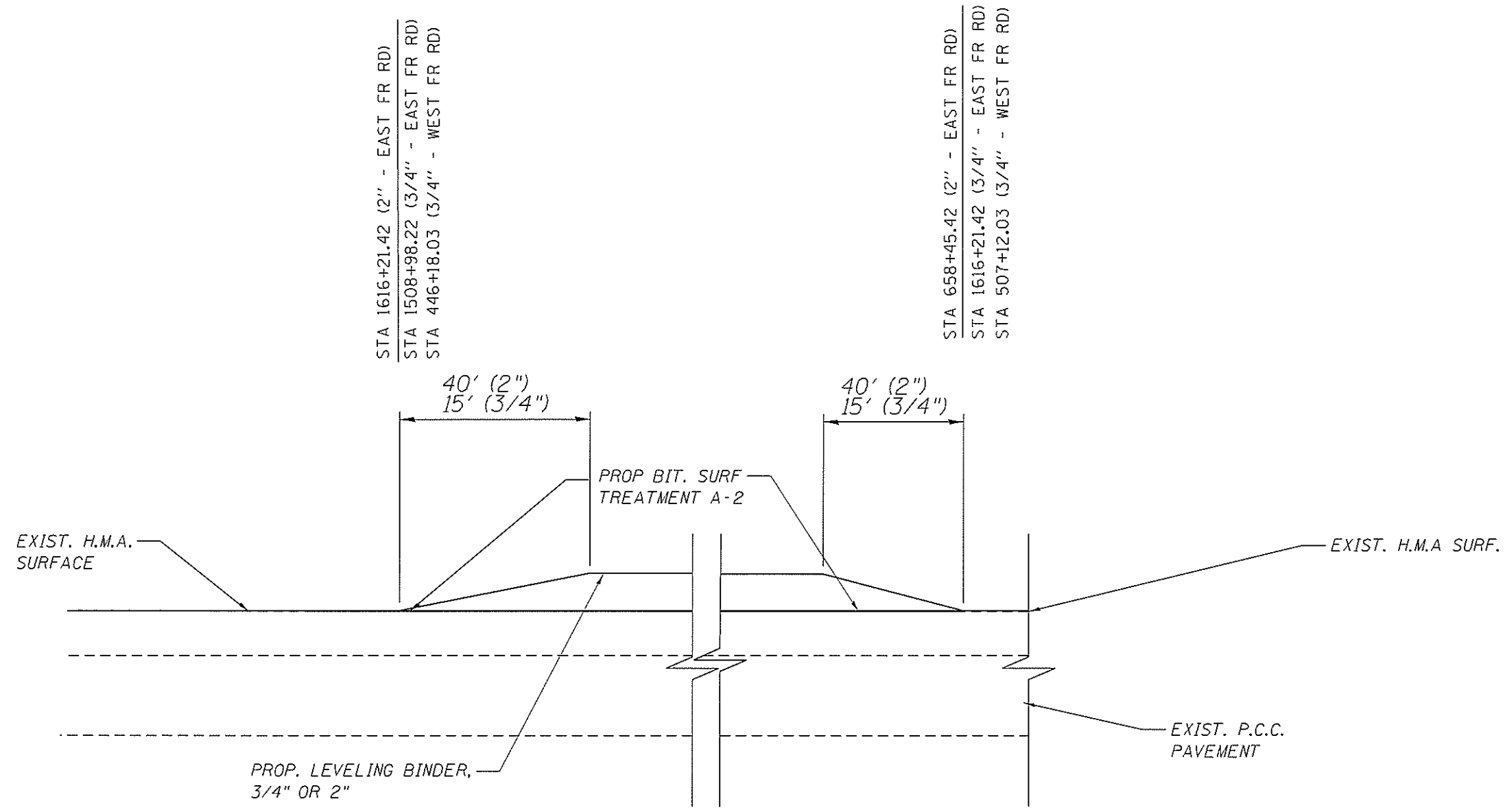
EAST FRONTRAGE ROAD/
WEST FRONTRAGE ROAD

*LEVELING BINDER:
FAS 2729 (W FR RD)
0.75" FROM STA 446+18.03 TO STA 507+12.03

FAI 55 (E FR RD)
0" FROM STA 385+75.02 TO STA 1508+98.22
0.75" FROM STA 1508+98.22 TO STA 1616+21.42
2" FROM STA 1616+21.42 TO STA 658+45.42
(SEE SHEET NUMBER 5 FOR STA EQNS)

* FAS 2729, FAI 55

FILE NAME =	USER NAME = nicholson1	DESIGNED -	REVISED -	STATE OF ILLINOIS DEPARTMENT OF TRANSPORTATION	TYPICAL SECTIONS			RTE.	SECTION	COUNTY	TOTAL SHEETS	SHEET NO.
S:\CONTRMAINT_CAD\72K91 - 1-55 - MONTGOMERY CO. - HALF SMART & A2\PLANS\72K91-1-55.dgn	DESIGNED BY -	REVISED -	REVISED -					168-21 0-4 & 168-31 0-2	MONTGOMERY	7	6	
PLOT SCALE = 3.0000' / 1"	CHECKED -	REVISED -	REVISED -		CONTRACT NO. 72K91			ILLINOIS FED. AID PROJECT				
Default	DATE -	REVISED -	REVISED -		SCALE: _____	SHEET 1	OF 1	SHEETS	STA. _____ TO STA. _____			



STA 1616+21.42 (2" - EAST FR RD)
 STA 1508+98.22 (3/4" - EAST FR RD)
 STA 446+18.03 (3/4" - WEST FR RD)

STA 658+45.42 (2" - EAST FR RD)
 STA 1616+21.42 (3/4" - EAST FR RD)
 STA 507+12.03 (3/4" - WEST FR RD)

40' (2")
 15' (3/4")

40' (2")
 15' (3/4")

PAVING DETAIL

*LEVELING BINDER:
 FAS 2729 (W FR RD)
 0.75" FROM STA 446+18.03 TO STA 507+12.03

 FAI 55 (E FR RD)
 0" FROM STA 385+75.02 TO STA 1508+98.22
 0.75" FROM STA 1508+98.22 TO STA 1616+21.42
 2" FROM STA 1616+21.42 TO STA 658+45.42
 (SEE SHEET NUMBER 5 FOR STA EQNS)

* FAS 2729, FAI 55

FILE NAME =	USER NAME = nicholsonj	DESIGNED -	REVISED -	STATE OF ILLINOIS DEPARTMENT OF TRANSPORTATION	PAVING DETAIL		RTE.	SECTION	COUNTY	TOTAL SHEETS	SHEET NO.
S:\CONTRM\MAIN\CAD\72K91 - 1-55 - MONTGOMERY CO. - HALF SMART & A2\PLANS\72K91-sh1-	D:\A\W\B\dgn	CHECKED -	REVISED -		SCALE: _____	SHEET 1 OF 1 SHEETS	STA. _____ TO STA. _____	168-2) 0-4 & (68-3) 0-2	MONTGOMERY	7	7
PLOT SCALE = 3.0000' / in.		DATE -	REVISED -						CONTRACT NO. 72K91		
Default	PLOT DATE = 10/31/2018								ILLINOIS FED. AID PROJECT		