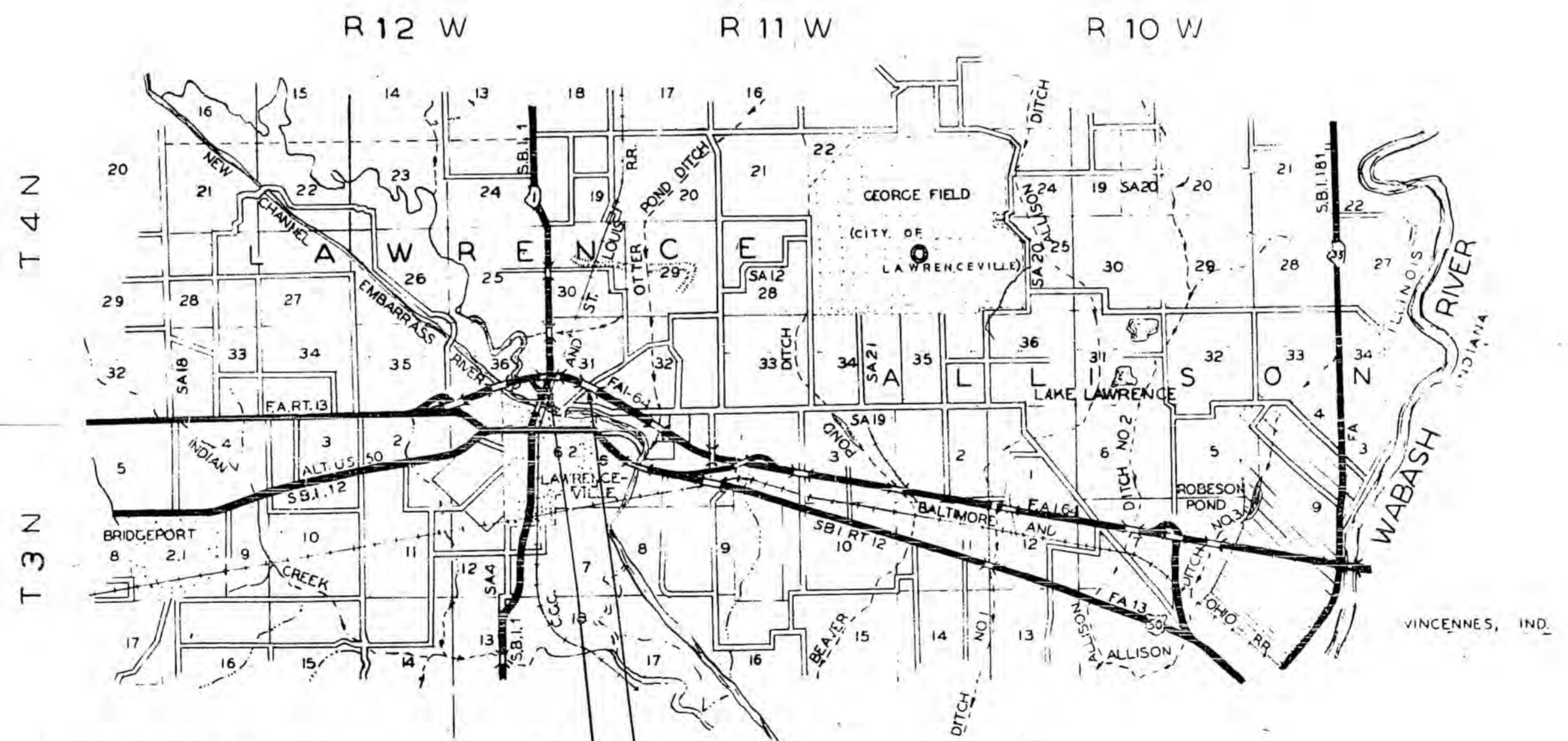


STATE OF ILLINOIS
DEPARTMENT OF PUBLIC WORKS AND BUILDINGS
DIVISION OF HIGHWAYS
PLANS FOR PROPOSED
FEDERAL AID HIGHWAY

FAI 64 SECTION 51-23HB-2 LAWRENCE
 FI-08-4(18)

SCALES
 PLAN 1 INCH = 100 FT
 PROFILE HOR 1 INCH = 100 FT
 PROFILE VERT 1 INCH = 10 FT
 CROSS SECTIONS 1 INCH = 5 FT

FAI ROUTE 64 SECTION 51-23HB-2
 23HB-3
 PROJECT FI-08-4(18)
 LAWRENCE COUNTY



SECTION 51-23HB-2 INCLUDES: THE CONSTRUCTION OF ONE 4-SPAN CONTINUOUS STEEL BEAM GRADE SEPARATION STRUCTURE (CARRYING F.A.I. RTE. 64 OVER S.B.I. RTE. 1) TWO SPANS AT 44'-8" AND TWO SPANS AT 37'-6" AT STA. 576+87.10. ROADWAY VARIES FROM 43'-5 1/2" TO 46'-0"

SECTION 51-23HB-3 INCLUDES: THE CONSTRUCTION OF ONE 3-SPAN CONTINUOUS R.C. DECK GIRDER GRADE SEPARATION STRUCTURE CARRYING F.A.I. RTE. 64 OVER LOCAL ROAD. TWO SPANS AT 37'-3" & ONE SPAN AT 48'-3" AT STA. 604+20.00. 39' ROADWAY.

LAYOUT
 APPROXIMATE SCALE: 1 INCH = 1 MILE
 NET LENGTH OF SECTION 51-23HB-2 = 168.00 FT = .032 MILE
 NET LENGTH OF SECTION 51-23HB-3 = 127.42 FT = .024 MILE
 TOTAL LENGTH OF PROJECT = 295.42 FT = .056 MILE



LOCATION OF SECTION INDICATED THUS:—
 SPECIAL COVER SHEET PREPARED FOR FEDERAL PROJECT

STATE OF ILLINOIS
 DEPARTMENT OF PUBLIC WORKS AND BUILDINGS
 DIVISION OF HIGHWAYS
 SUBMITTED 3-13-59
 EXAMINED March 26, 1959
 DRAWN March 26, 1959
 APPROVED March 26, 1959
 APPROVED March 26, 1959

MAR 17 1959
 W.M. Romine

DEPARTMENT OF COMMERCE
 BUREAU OF PUBLIC ROADS
 APPROVED _____
 DIVISION ENGINEER DATE

FAI ROUTE 64 SECTION 51-23HB-2 LAWRENCE COUNTY
PLANS PREPARED BY CLARK, DAILY & DIETZ, URBANA, ILLINOIS

Examined Mar 12, 1959 Fred C. Nelson
District Engineer of Design

Examined Mar 13, 1959 Robert M. Gamble
District Engineer of Construction

Examined March 13, 1959 J. L. Van Deusen
District Engineer of Maintenance

Examined March 13, 1959 Wilmer H. Haelfer
District Engr. of Research & Planning

Examined March 13, 1959 Hugh Osborn
Asst. District Engineer of Traffic

Examined March 13, 1959 O. G. Bliss
District Engineer

GENERAL NOTES

FAI ROUTE 64 SECTION 51-23HB-2
LAWRENCE COUNTY

This Section shall be constructed in accordance with the Plans, Standard Specifications, adopted January 2, 1958, and the Special Provisions.

Section 51-23HB-2 includes the construction of one 4-Span Continuous Steel Beam Bridge over SBI Route 1, at Station 576+87.10, 4 spans: 2 spans at 44'-8" and 2 spans at 37'-6" with a roadway varying from 43'-5 1/2" to 46', and other incidental work necessary to complete the section.

Embankment shall be furnished by the Contractor from sources approved by the Engineer. See Special Provisions.

No payment will be made for overhaul on any material hauled from any source.

THE CONTRACTOR FOR THIS SECTION SHALL FURNISH AND ERECT TWO STANDARD 2136 HIGHWAY IMPROVEMENT SIGNS AT A LOCATION DESIGNATED BY THE ENGINEER.

INDEX OF SHEETS

FAI ROUTE 64, SECTION 51-23HB-2
LAWRENCE COUNTY

SHEET NO.	TITLE
1	Cover Sheet
2	Signatures Index of Sheets, General Notes, and Summary of Quantities.
3	Plan and Profile, Station 570+00 to Station 587+00 and Typical Sections.
4-14	Bridge Plans; Bridge, Station 576+87.10
15-16	STATION CROSS-SECTIONS, S.B.I. ROUTE 1 STATION 34+00 TO STATION 39+00
17	Standards 1971-S, 1972-R and 2114
18	STANDARD 2113, 2136
19	STANDARD 2138

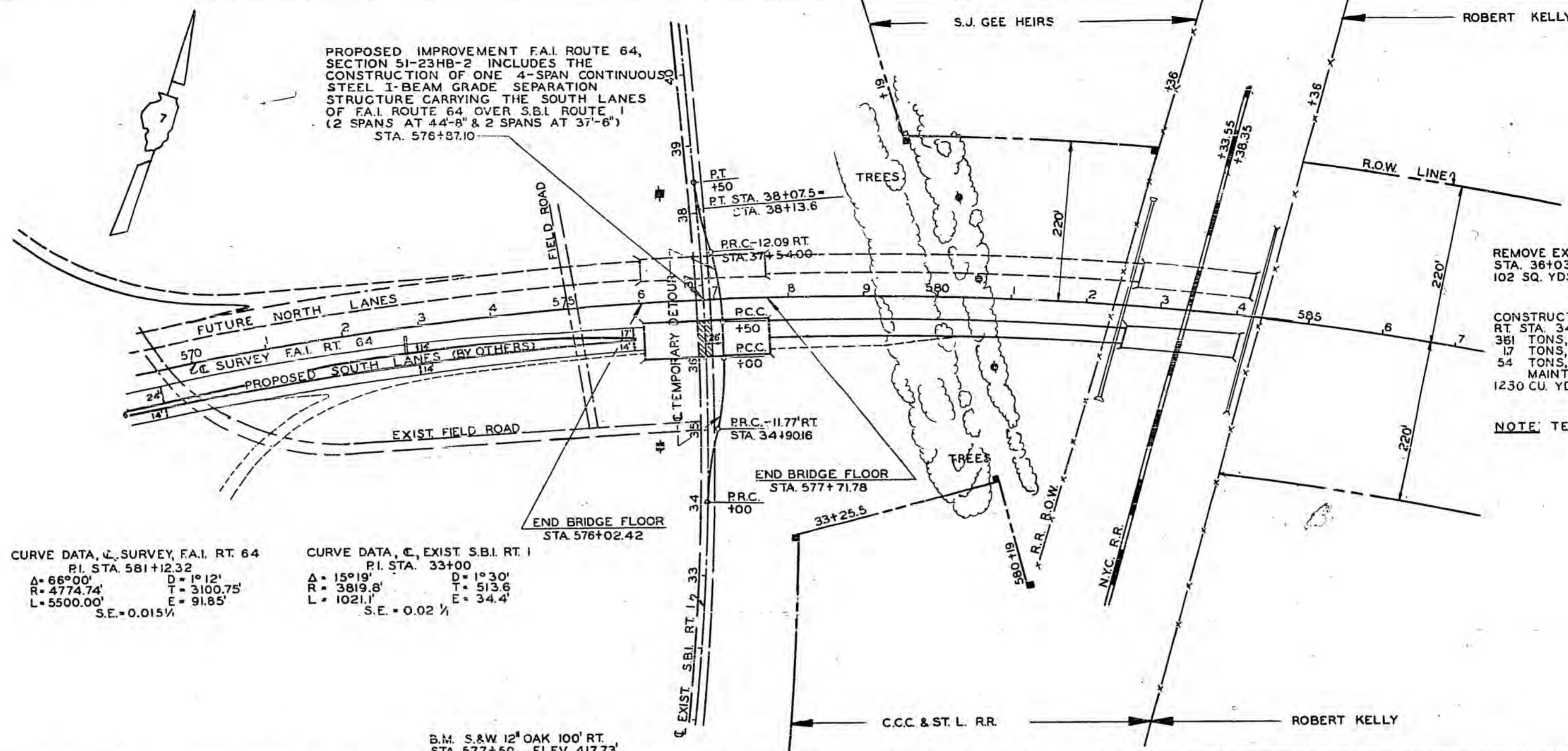
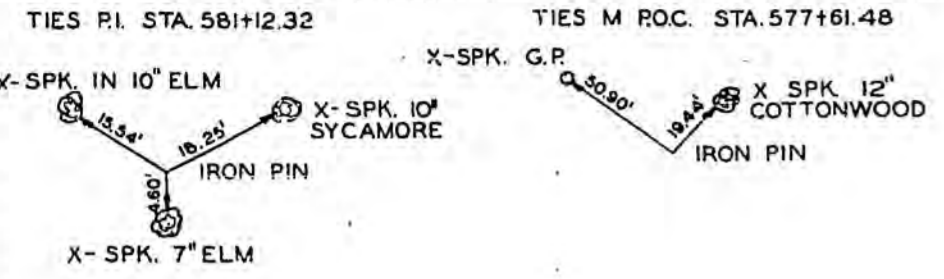
SUMMARY OF QUANTITIES

FAI ROUTE 64 SECTION 51-23HB-2
LAWRENCE COUNTY

ITEM	UNIT	QUANTITY
CLASS X CONCRETE	CU. YDS.	574.3
REINFORCEMENT BARS	LBS.	73,555
FURNISHING AND ERECTING STRUCTURAL STEEL	LBS.	179,084
ALTERNATE A: METAL HANDRAIL	LIN. FT.	332
ALTERNATE B: ALUMINUM HANDRAIL	LIN. FT.	332
SLOPE WALL	SQ. YDS.	540
CLASS A EXCAVATION FOR STRUCTURES	CU. YDS.	142
NAME PLATES	EACH	1
EMBANKMENT	CU. YDS.	56,030
FURNISHING CONCRETE PILES	LIN. FT.	1,008
DRIVING CONCRETE PILES	LIN. FT.	1,008
TEST PILES (CONCRETE)	EACH	1
FURNISHING CROSSED PILES, 20.1'-38'	LIN. FT.	2,725
DRIVING TIMBER PILES	LIN. FT.	2,725
TEST PILES (CROSSED TIMBER)	EACH	1
HANDRAIL CONCRETE	CU. YDS.	2.3
GRAVEL OR CRUSHED STONE SURFACE COURSE, TYPE A	TONS	361
GRAVEL OR CRUSHED STONE	TONS	54
CALCIUM CHLORIDE APPLIED	TONS	1.7
PAVEMENT REMOVAL	SQ. YDS.	102

HIGHWAY CLASSIFICATION
465-T-70

DESIGNED BY _____ DATE _____ CHECKED BY _____ DATE _____ IN CHARGE _____



PLAN 51-23 19 3
LAWRENCE 570+00 587+00

EQUALITY: STA. 576+87.1 (SURVEY C, F.A.I. RT. 64) - STA. 36+80.55 (EXIST. S.B.I. RT. 1)

REMOVE EXISTING PAVEMENT ALONG S.B.I. RT. 1 STA. 36+03.3 TO STA. 36+54.3 102 SQ. YDS. PAVEMENT REMOVAL

CONSTRUCT TEMPORARY DETOUR ALONG S.B.I. RT. 1 RT. STA. 34+00 TO STA. 38+50 381 TONS, GRAVEL OR CRUSHED STONE SURFACE COURSE, TYPE A 17 TONS, CALCIUM CHLORIDE APPLIED 54 TONS, GRAVEL OR CRUSHED STONE ALLOWED FOR MAINTENANCE 1230 CU. YDS. EMBANKMENT

NOTE: TEMPORARY DETOUR TO BE REMOVED BY OTHERS

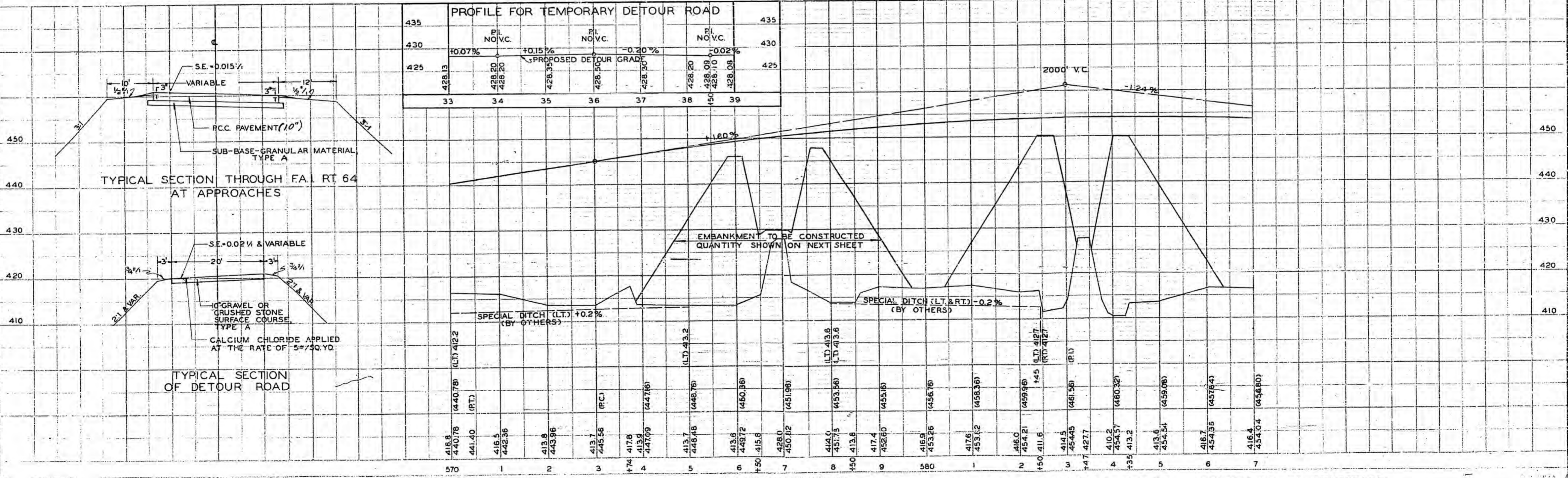
REVERSE CURVE DATA, C, TEMPORARY DETOUR
 P.C.C. = STA. 34+00
 P.C.C. = 26' RT. STA. 36+00
 $\Delta = 13^{\circ}24'38''$ $D = \dots$ $\Delta = 16^{\circ}24'38''$ $D = \dots$
 $R = 369.93$ $T = 45.84$ $R = 389.93$ $T = 56.23$
 $L = 91.31$ $E = 2.69'$ $L = 111.73$ $E = 4.03'$

REVERSE CURVE DATA, C, TEMPORARY DETOUR
 P.C.C. = 26' RT. STA. 36+50
 P.T. = STA. 38+50
 $\Delta = 16^{\circ}55'07''$ $D = \dots$ $\Delta = 14^{\circ}33'22''$ $D = \dots$
 $R = 358.41$ $T = 53.30'$ $R = 358.41$ $T = 45.77'$
 $L = 105.16'$ $E = 3.94'$ $L = 91.05'$ $E = 2.91'$

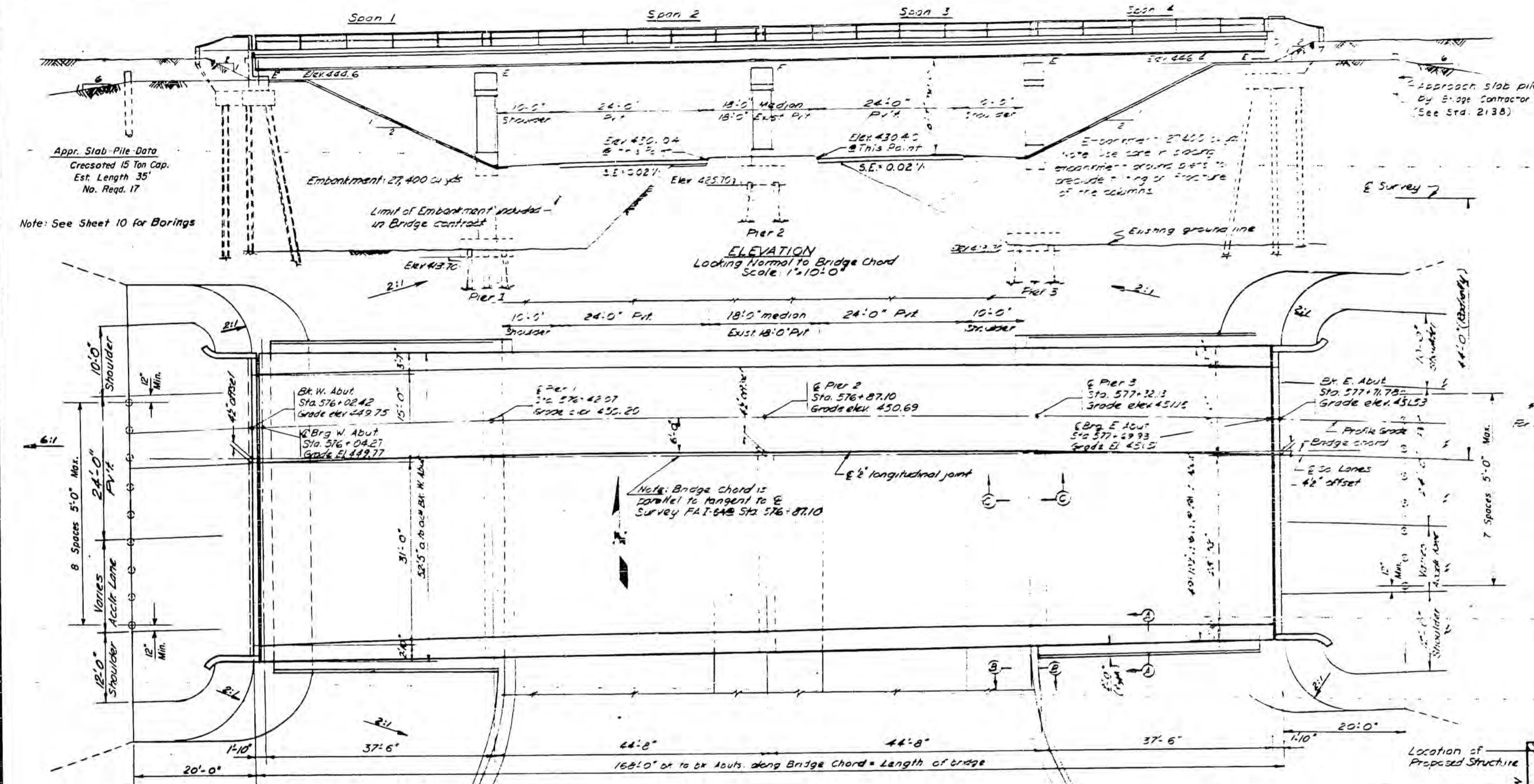
CURVE DATA, C, SURVEY, F.A.I. RT. 64
 P.I. STA. 581+12.32
 $\Delta = 66^{\circ}00'$ $D = 1^{\circ}12'$
 $R = 4774.74'$ $T = 3100.75'$
 $L = 5500.00'$ $E = 91.85'$
 S.E. = 0.015%

CURVE DATA, C, EXIST. S.B.I. RT. 1
 P.I. STA. 33+00
 $\Delta = 15^{\circ}19'$ $D = 1^{\circ}30'$
 $R = 3619.8'$ $T = 513.6'$
 $L = 1021.1'$ $E = 34.4'$
 S.E. = 0.02%

B.M. S.A.W. 12" OAK 100' RT. STA. 577+50 ELEV. 417.73'



BM - S&W 12' cor. 100' E of Sta 577+50
 Elev. 417.73 (USGS Datum)
 No existing structure



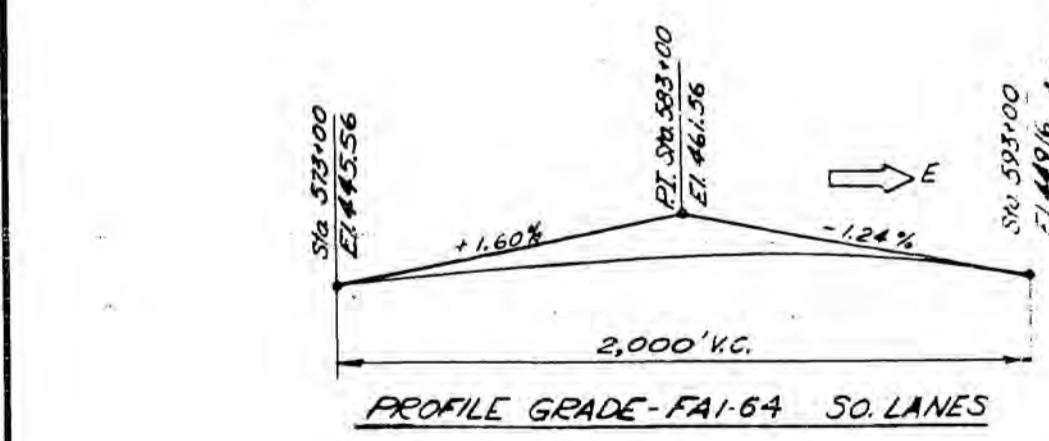
- GENERAL NOTES-**
- SPECIFICATIONS: THE STATE OF ILLINOIS "STANDARD SPECIFICATIONS FOR ROAD CONSTRUCTION," ADOPTED JANUARY 2, 1956, SHALL APPLY.
 - CONCRETE: CLASS Y CONCRETE SHALL BE USED THROUGHOUT. THE CONCRETE FLOOR SLAB SHALL BE FINISHED IN ACCORDANCE WITH ARTICLE 51.19 OF THE STANDARD SPECIFICATIONS.
 - HANDRAILS: SEE SPECIAL PROVISIONS FOR OPTIONAL HANDRAIL TYPES AND BASIS OF PAYMENT.
 - STRUCTURAL STEEL: ALL ROCKERS, BEARING PLATES, LOAD PLATES, PINTLES AND ANCHOR BOLTS IN THE BRIDGE BEARINGS, AND ALL STEEL IN THE EXPANSION JOINTS SHALL BE FURNISHED AND SET IN ACCORDANCE WITH ARTICLES 51.18 AND 51.19 RESPECTIVELY, AND ARE INCLUDED FOR PAYMENT AS STRUCTURAL STEEL.
 - PAINT: EXCEPT AS OTHERWISE PROVIDED ALL STRUCTURAL STEEL AND METAL HANDRAIL SHALL RECEIVE ONE SHOP COAT OF RED LEAD PAINT AND TWO FIELD COATS OF ALUMINUM PAINT IN ACCORDANCE WITH ARTICLES 56.1 THROUGH 56.8 OF THE STANDARD SPECIFICATIONS. ALL PAINT SHALL BE FURNISHED AND APPLIED BY THE CONTRACTOR.
 - PILES: BEARING CAPACITY SHALL BE AS SHOWN ON THE PLANS. SEE SPECIAL PROVISIONS FOR OPTIONAL PILE TYPES AND BASIS OF PAYMENT.
 - TEST PILES: THE CONTRACTOR SHALL DRIVE ONE TEST PILE AT WEST ABUTMENT AND PIER 2 IN PERMANENT LOCATIONS IN ACCORDANCE WITH ARTICLE 56.1 OF THE STANDARD SPECIFICATIONS BEFORE ORDERING THE REMAINDER OF THE PILES.
 - EMBANKMENT: SEE SPECIAL PROVISIONS.

STATION 576+87.10
 BUILT 19 51
 STATE OF ILLINOIS
 FAI RTE 64 SEC. 51-23 HB-2
 PROJECT NO. 51-23 HB-2
 LOADING H20-516-44 (Alternate)
 *NAME PLATE DATA

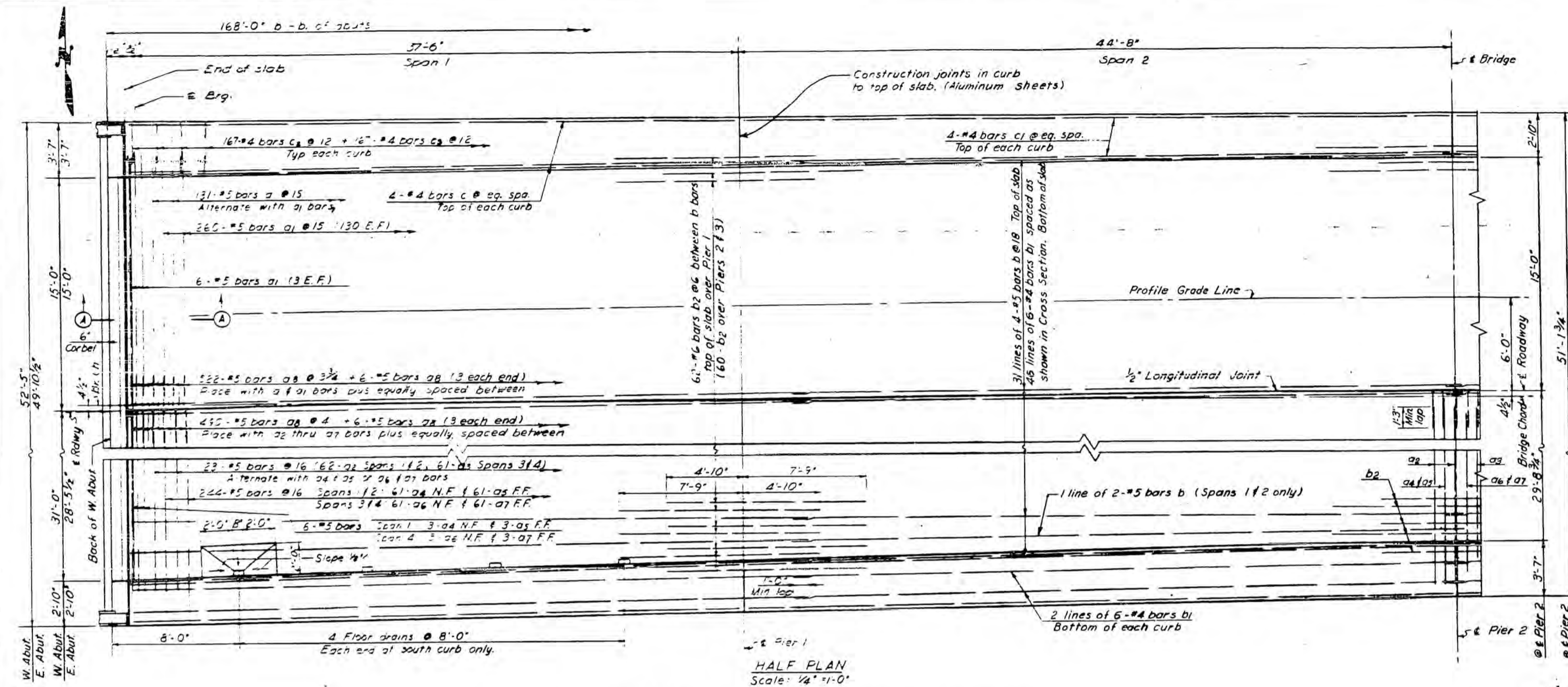
*See Standards 2113
 For Location see 5113 & 3

TOTAL BILL OF MATERIAL

ITEM	UNIT	SUPER	SUBSTR	TOTAL
Class 1 Concrete	Cu Yds	217.5	357.3	574.8
Reinforcement Bars	Lbs	42,700	30,835	73,535
Structural Steel	Lbs	79,054		79,054
Alternate A: Metal Handrail	Lf	332		332
Alternate B: Aluminum Handrail	Lf	332		332
Slope Wall	Sq Yds	540		540
Class A Excav for Structures	Sq Yds		142	142
Name Plates	Each	1		1
Embankment	Sq Yds		54,800	54,800
Concrete Piles	Lf		1008	1008
Test Piles (Concrete)	Each		1	1
Crested Piles, 20.1-38"	Lf		2725	2725
Test Piles (Crested)	Each		1	1
Handrail, Concrete	Cu Yds	2.3		2.3



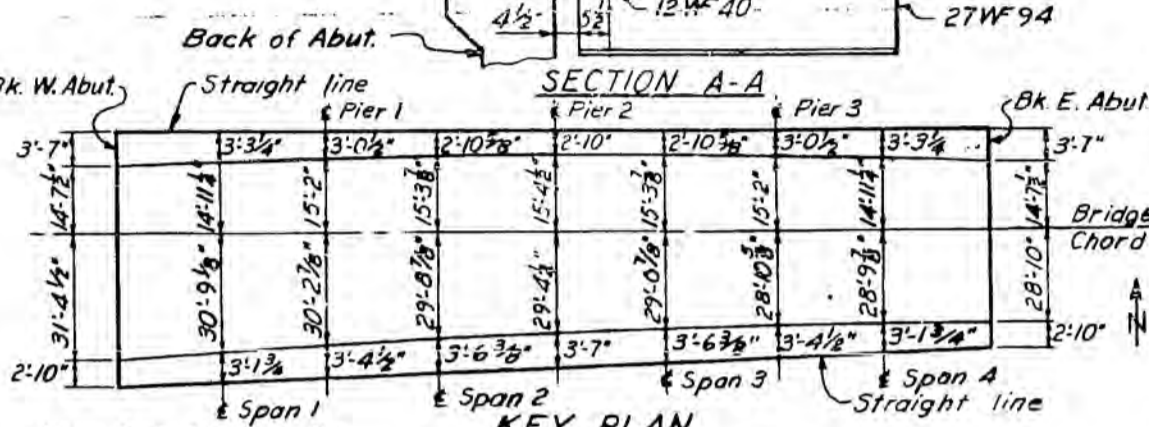
PROJECT NO.	FA. 1.64	SECTION	51-23 HB-2	COUNTY	LAWRENCE	TOTAL SHEETS	19	SHEET NO.	6
-------------	----------	---------	------------	--------	----------	--------------	----	-----------	---



1 1/2" open joint at 50°F. Decrease 1/16" for every 10° rise in temperature and increase the same amounts for temperature drop.

7/16" holes at 12" cts for 3/8" bolts. All bolts shall be burned, sawed or clipped off flush with back of angles after forms have been removed.

Shaded area to be poured after superstructure formwork has been removed. Quantity of Class X Concrete included with superstructure.



NOTE: See Sheet 1 for additional geometry.

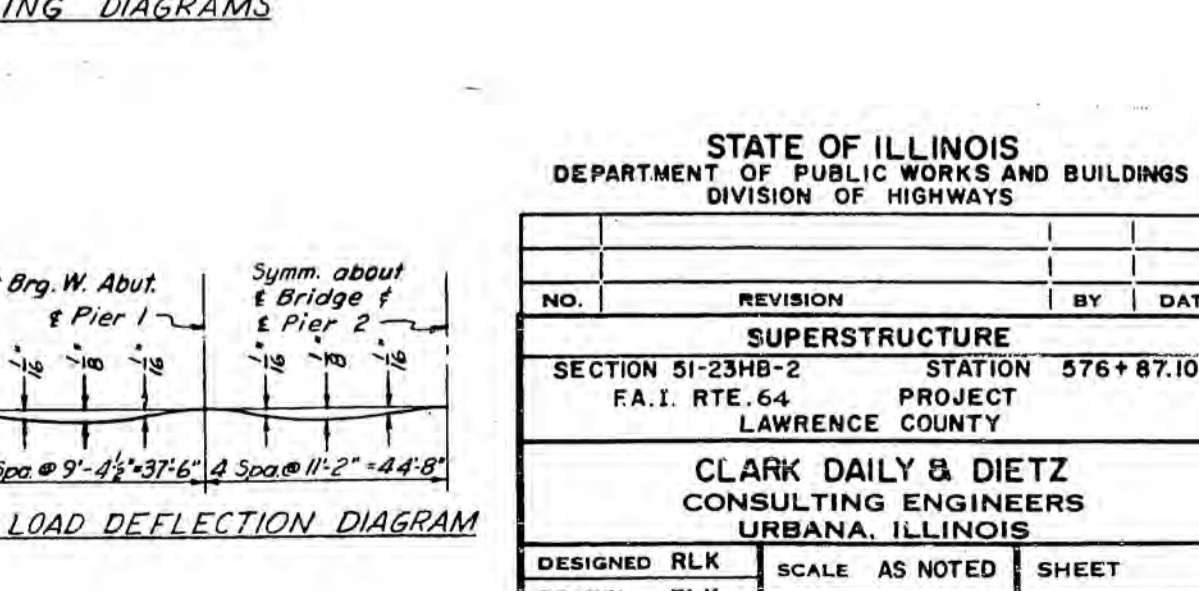
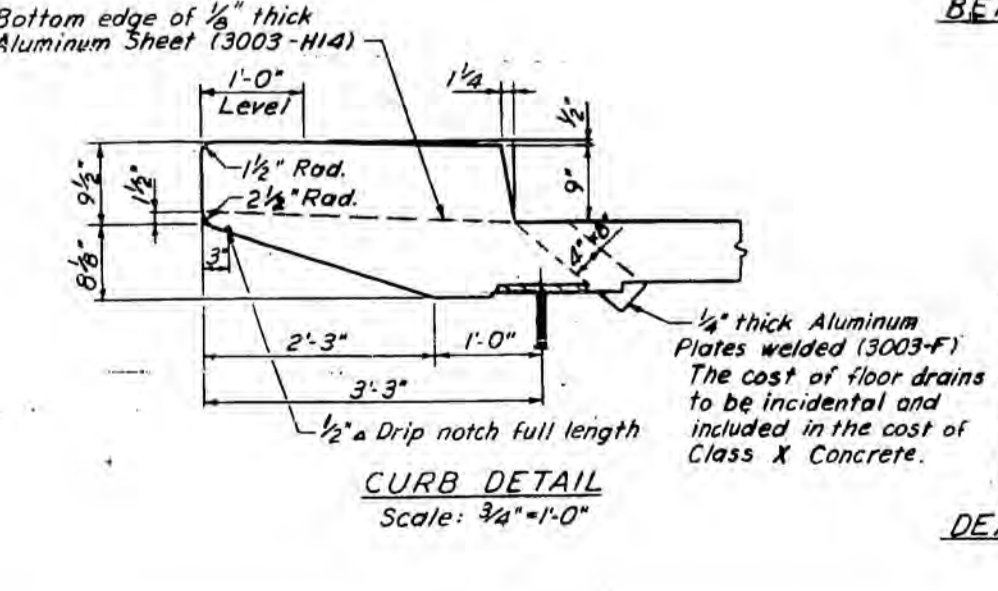
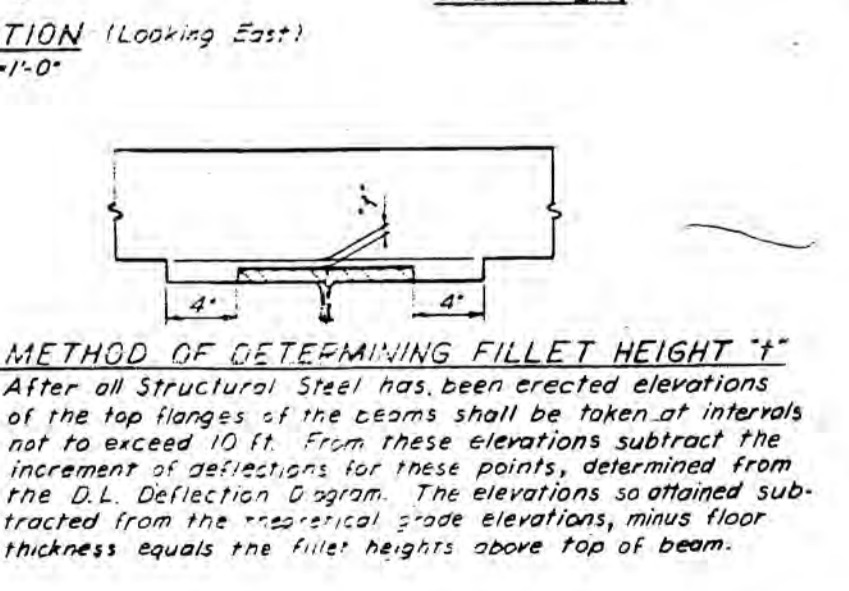
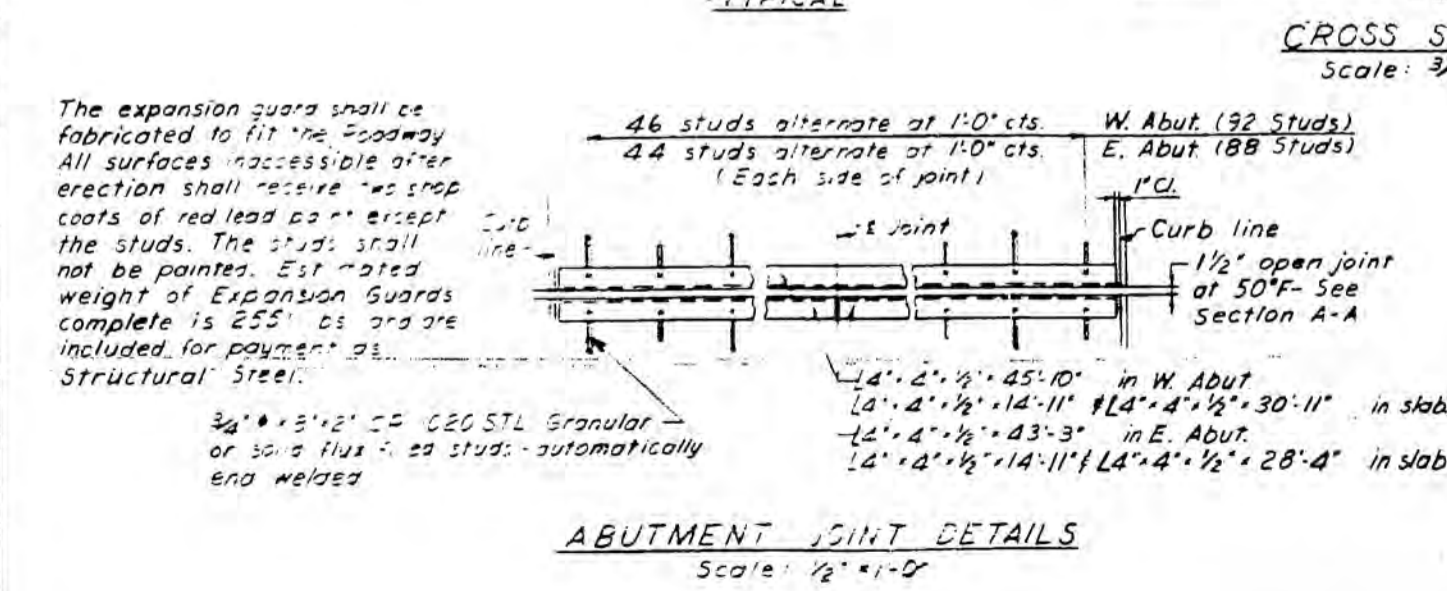
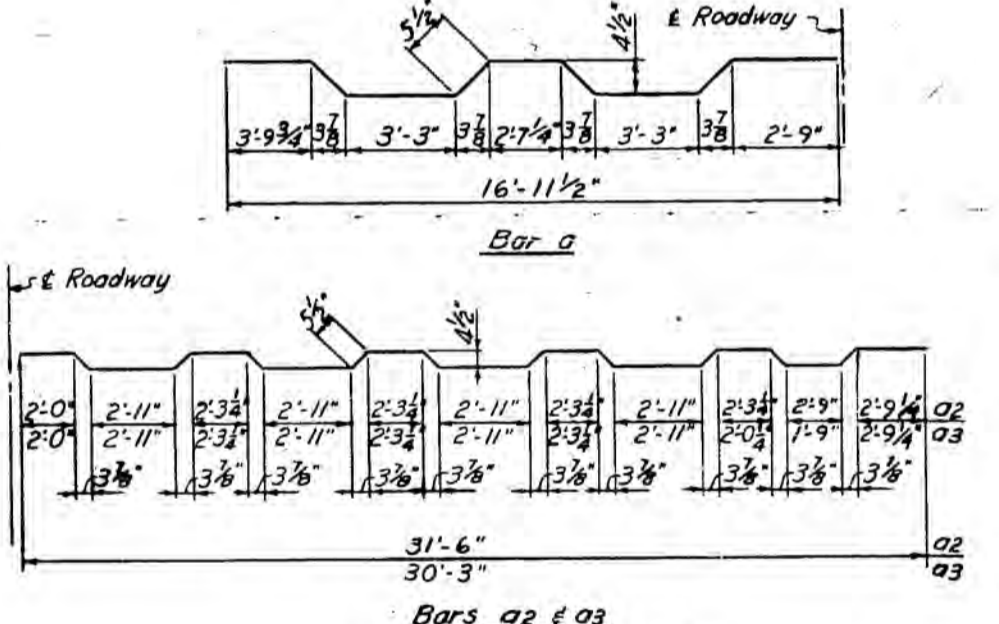
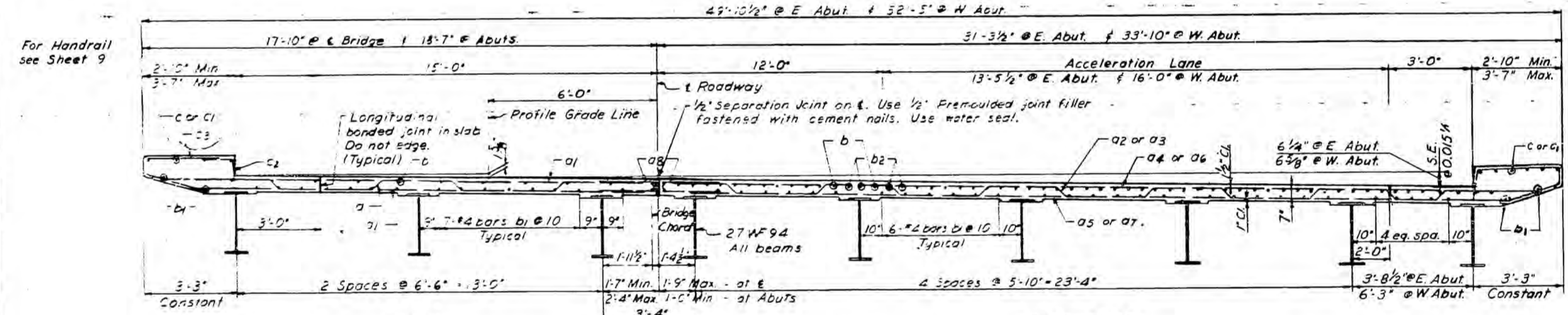
BILL OF MATERIAL

Bar No.	Size	Length	Shape
a	131	5	17'-6"
a1	272	5	15'-9"
a2	62	5	32'-11"
a3	61	5	31'-8"
a4	64	5	32'-3"
a5	64	5	31'-2"
a6	64	5	30'-3"
a7	64	5	29'-2"
a8	1024	5	5'-6"
b	126	5	42'-2"
b1	300	4	20'-5"
b2	182	6	12'-7"
c	16	4	38'-0"
c1	32	4	22'-10"
c2	334	4	3'-1"
c3	334	4	5'-4"

Bar No.	Size	Length	Shape
a	131	5	17'-6"
a1	272	5	15'-9"
a2	62	5	32'-11"
a3	61	5	31'-8"
a4	64	5	32'-3"
a5	64	5	31'-2"
a6	64	5	30'-3"
a7	64	5	29'-2"
a8	1024	5	5'-6"
b	126	5	42'-2"
b1	300	4	20'-5"
b2	182	6	12'-7"
c	16	4	38'-0"
c1	32	4	22'-10"
c2	334	4	3'-1"
c3	334	4	5'-4"

Class X Concrete Cu. Yds. 217.0
 Reinforcement Bars Lbs. 42,920
 Structural Steel Lbs. 2531

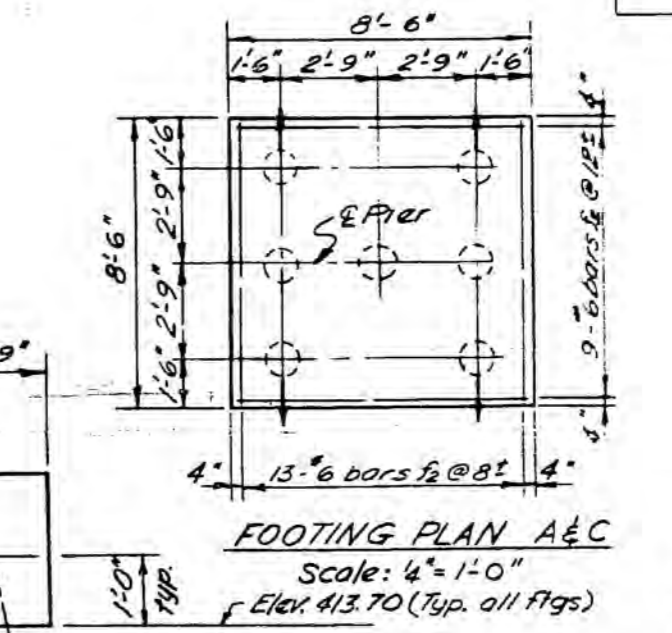
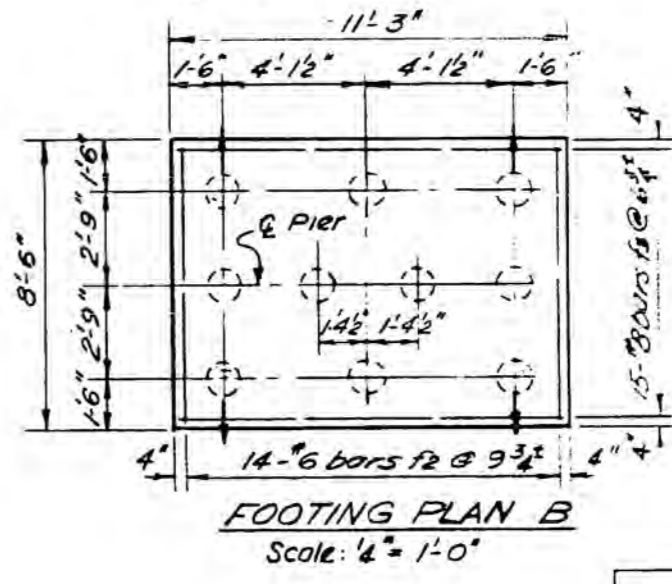
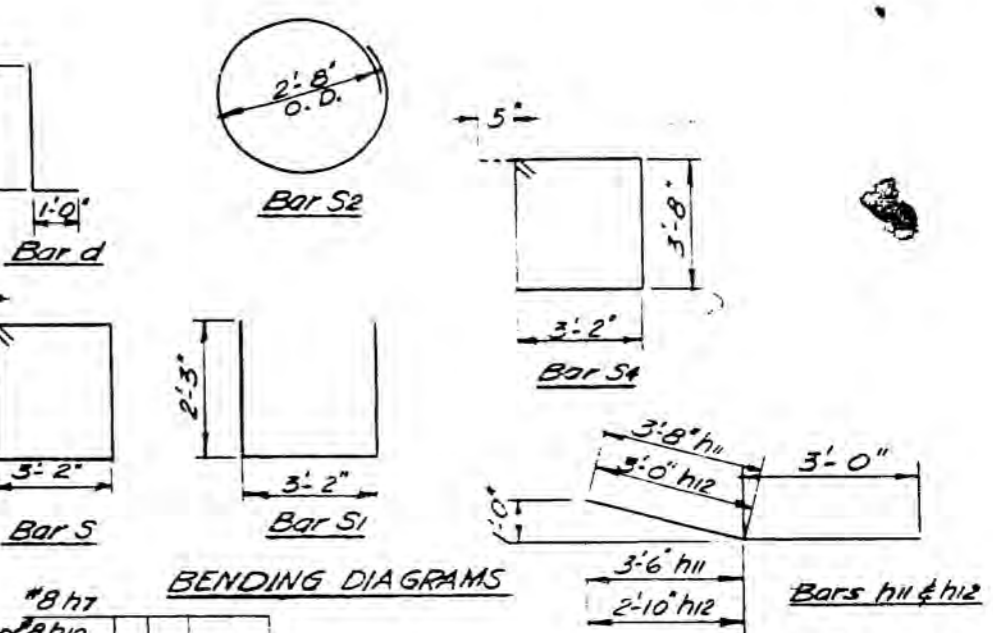
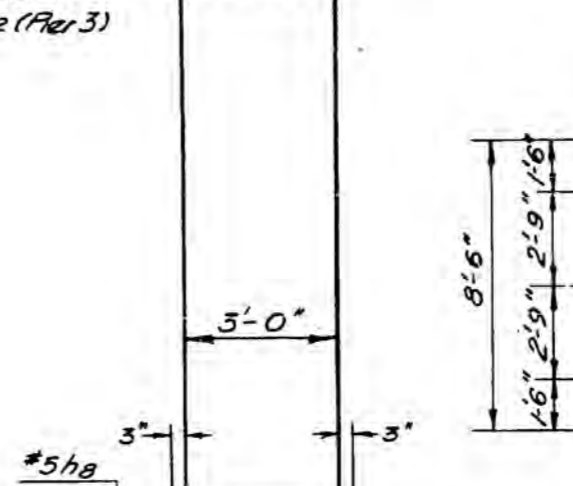
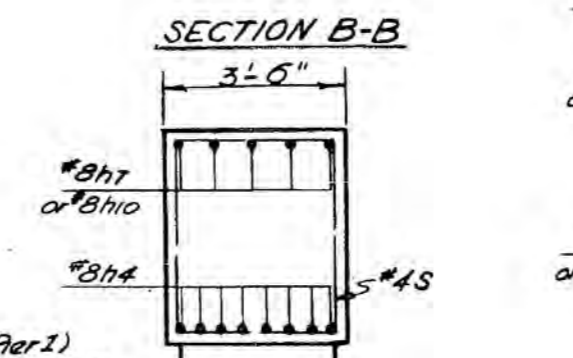
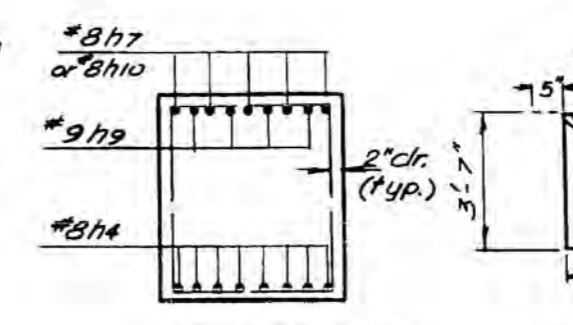
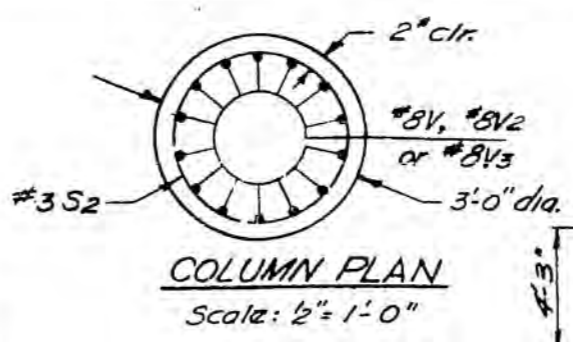
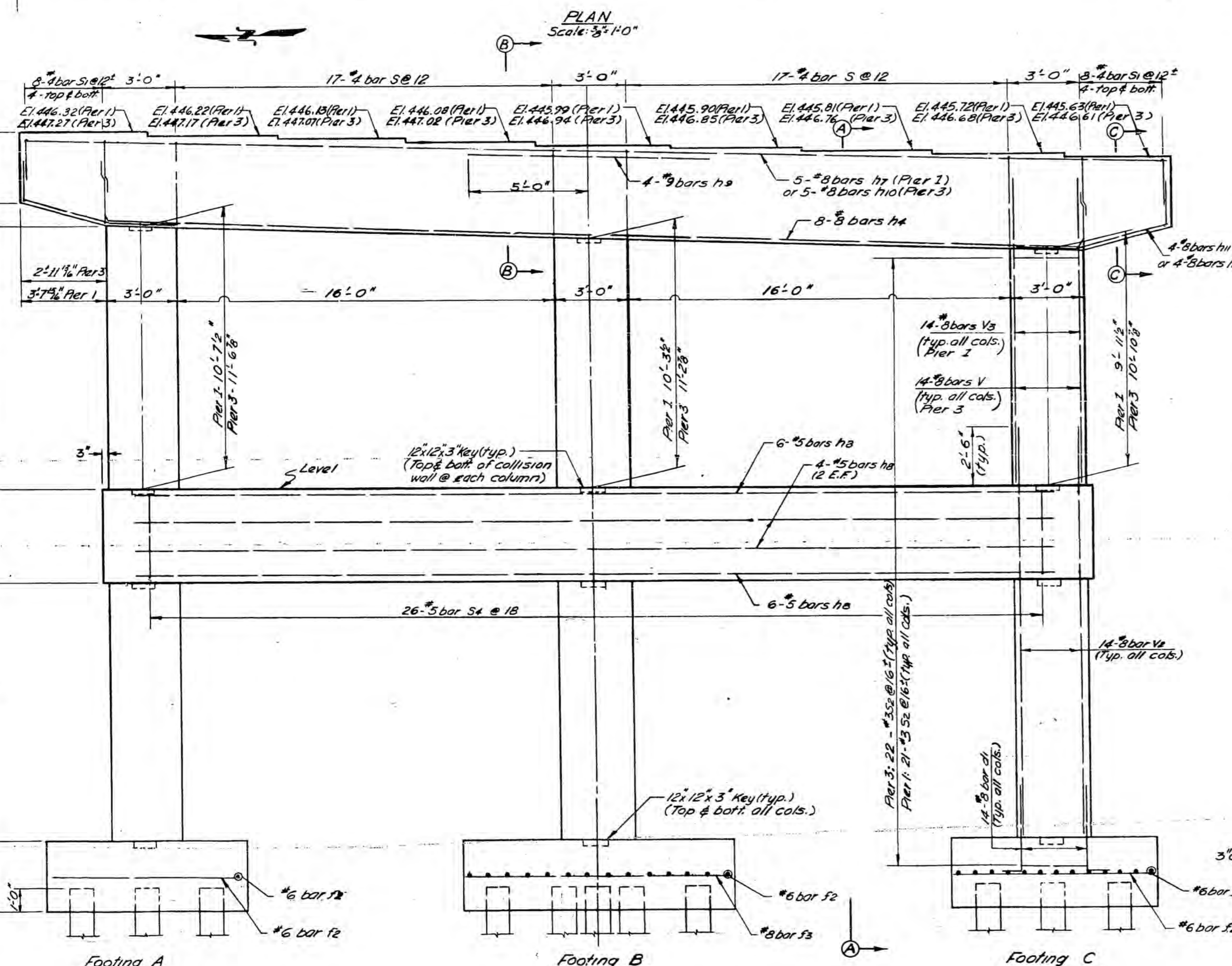
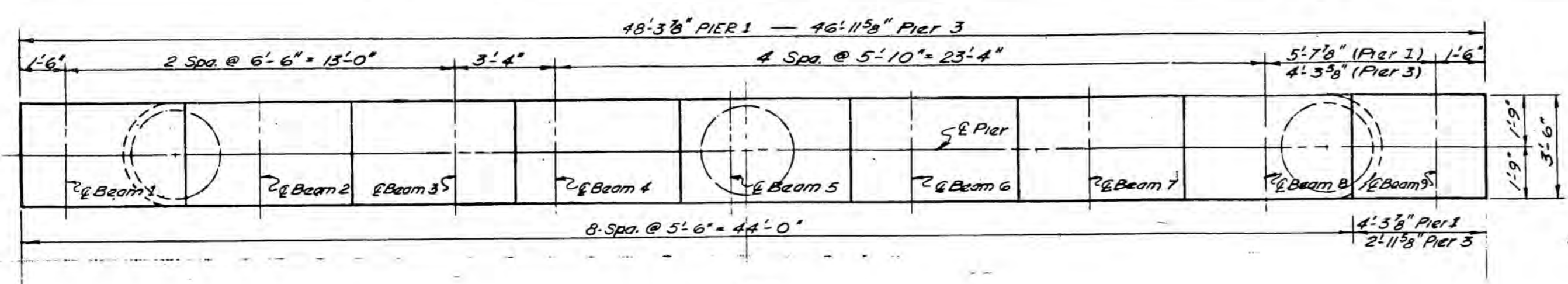
*Weight of armor angles and studs only



STATE OF ILLINOIS
 DEPARTMENT OF PUBLIC WORKS AND BUILDINGS
 DIVISION OF HIGHWAYS

NO.	REVISION	BY	DATE
SUPERSTRUCTURE			
SECTION 51-23HB-2		STATION 576+87.10	
FA. I. RTE. 64		PROJECT	
LAWRENCE COUNTY		PROJECT	
CLARK DAILY & DIETZ CONSULTING ENGINEERS URBANA, ILLINOIS			
DESIGNED RLK	SCALE AS NOTED	SHEET	
DRAWN RLK	DATE 12-29-58	OF	
CHECKED BAJ			

JOHN NO. 369-B



BILL OF MATERIALS (2 Piers)

Bar	Pier 1	Pier 3	Size	Length	Shape
d1	42	42	8	5'-3"	L
h7	8	8	8	40'-6"	—
h9	5	—	8	48'-0"	—
h8	16	16	5	38'-0"	—
h2	4	4	9	10'-0"	—
h10	—	5	8	46'-6"	—
h11	8	—	8	6'-8"	—
h12	—	8	8	6'-0"	—
S	34	34	4	14'-4"	□
S1	16	16	4	7'-8"	□
S2	63	66	3	9'-3"	○
S4	26	26	5	14'-6"	□
V	—	42	8	14'-0"	—
V2	42	42	8	17'-6"	—
V3	42	—	8	13'-2"	—
f2	58	58	6	8'-0"	—
f3	15	15	8	10'-9"	—

	Unit	Pier 1	Pier 3	Total
Class X Concrete	Cu Yds	88.2	88.3	176.5
Reinforcement Bars	Lbs	8,687	8,551	17,238
Class A Excav for Struct	Cu Yds	24	24	48
Crested Piles, 201-38	Ln. Ft.	720	720	1440

Note:
 ○ indicates batter pile
 (See Sect. A-A)

PILE DATA
 Type: Crested Timber
 Minimum Capacity: 20 Tons
 Estimated Length: 30'-0"
 No. Required: 48

STATE OF ILLINOIS
 DEPARTMENT OF PUBLIC WORKS AND BUILDINGS
 DIVISION OF HIGHWAYS

NO.	REVISION	BY	DATE

PIERS 1 & 3
 SECTION 51-23HB-1 STATION 576+87.10
 F.A.I. RTE. 64 PROJECT
 LAWRENCE COUNTY

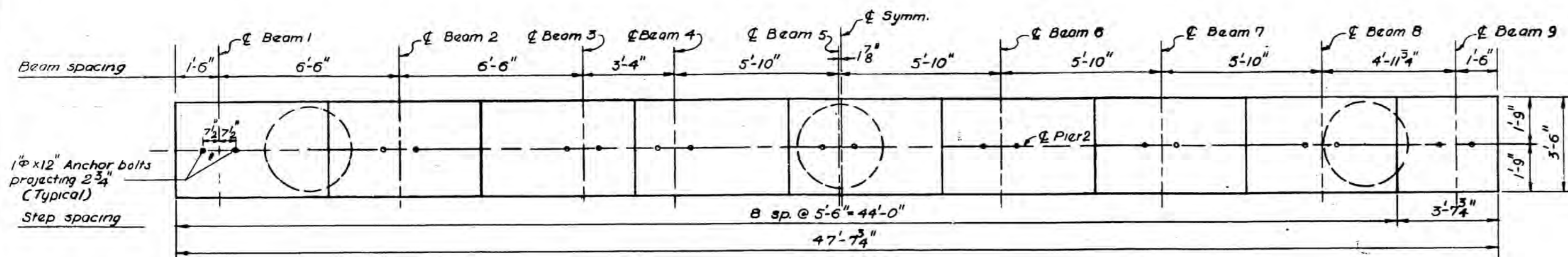
CLARK DAILY & DIETZ
 CONSULTING ENGINEERS
 URBANA, ILLINOIS

DESIGNED RWA	SCALE AS NOTED	SHEET
DRAWN JWN	DATE 1-12-59	OF
CHECKED RLK		JOB NO. 389-B

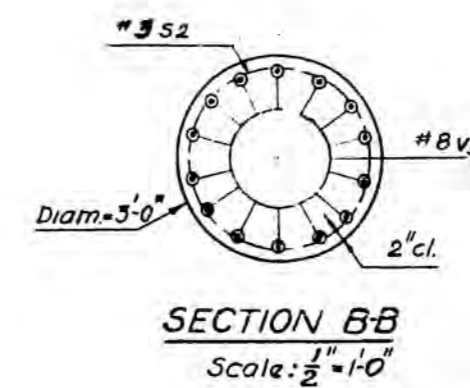
DESIGNED BY: DRAWN BY: CHECKED BY: DATE: IN CHARGE

Revised: 3-24-59 - WJM - Removed test pile notation from FOOTING PLAN B & changed information under PILE DATA accordingly. In BILL OF MATERIALS (2 Piers), removed item "TEST PILES (Crested)" and changed the quantities of Crested Piles 201-38 from 48 to 720, 576 to 720 & 1350 to 1440 Ln. Ft. in the PIER 1, PIER 3 & TOTAL columns, respectively.

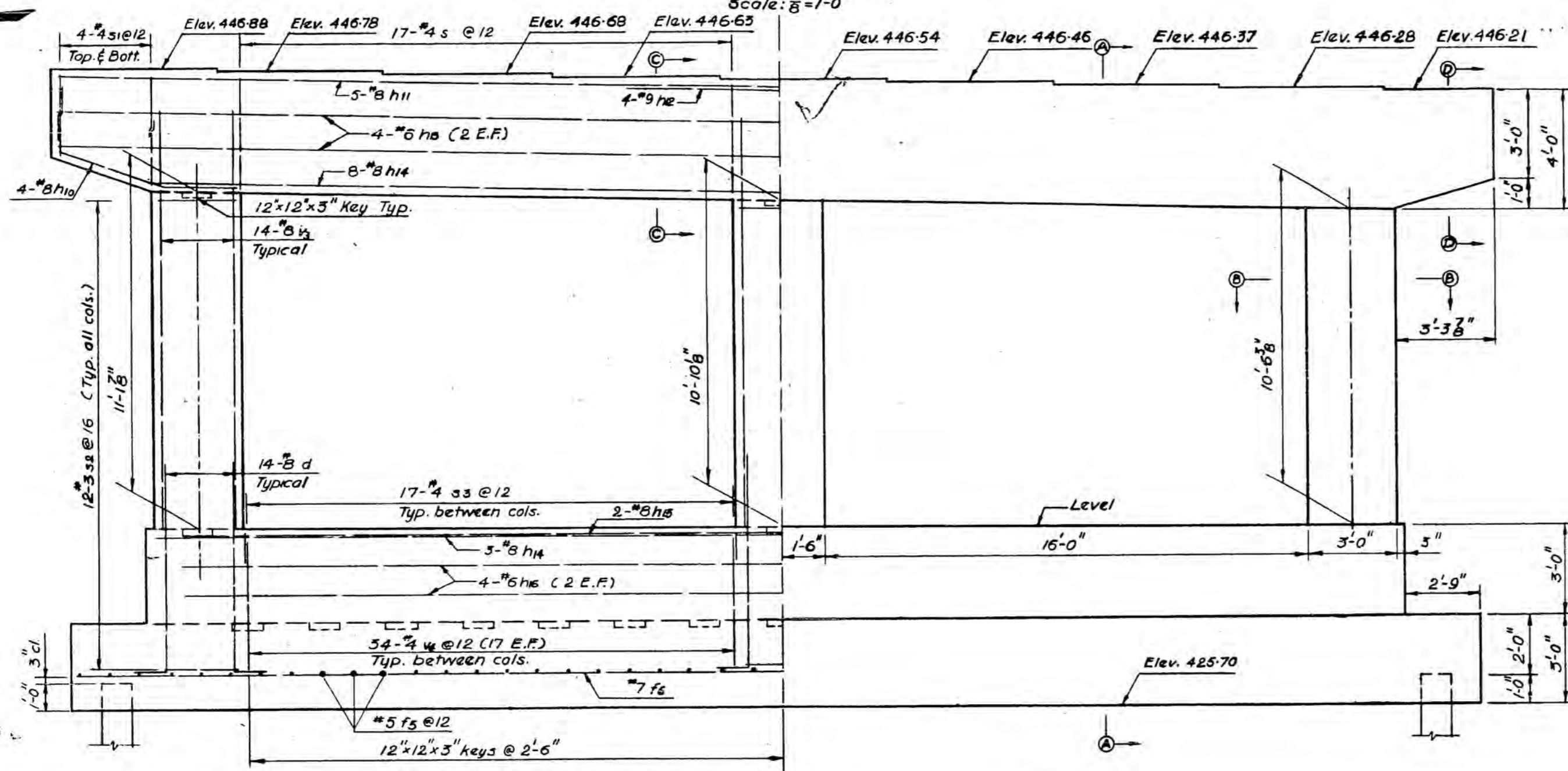
ROUTE NO.	SECTION	COUNTY	TOTAL SHEETS	SHEET NO.
F.A.I. 64	51-23 HB-2	LAWRENCE	19	8
PROJ. ROAD DIST. NO. 7		ILLINOIS	PROJECT	



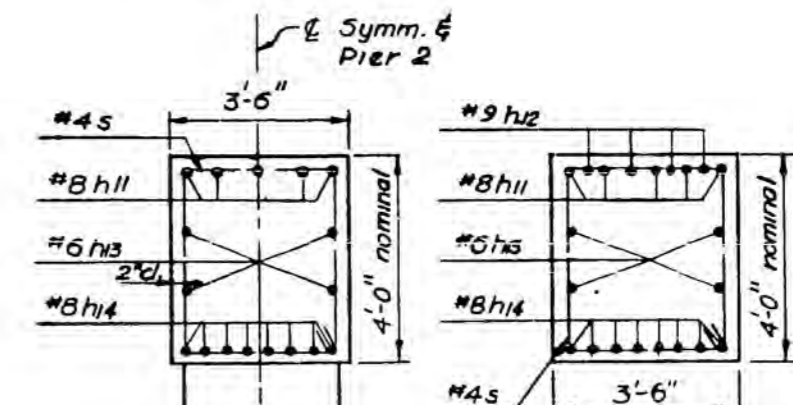
TOP PLAN
Scale: 3/8" = 1'-0"



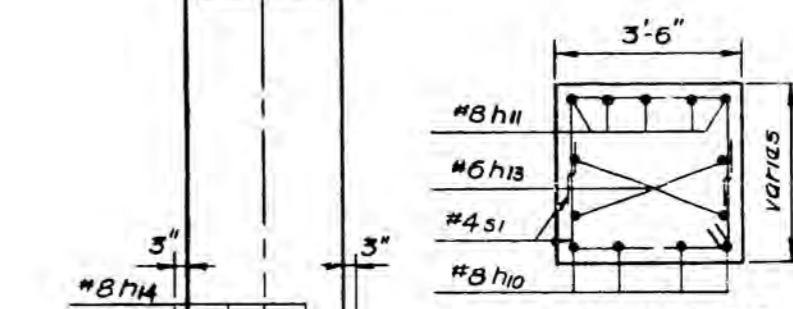
SECTION BB
Scale: 1/2" = 1'-0"



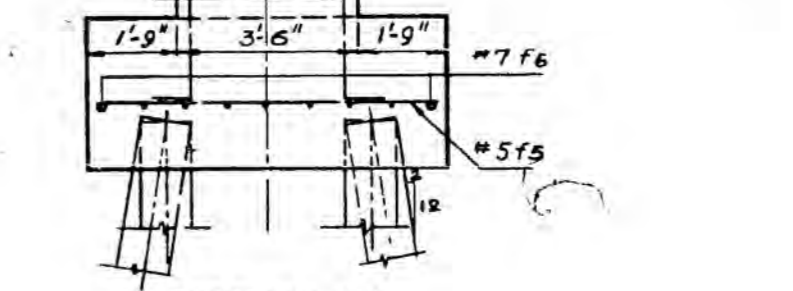
REINFORCEMENT ELEVATION DIMENSIONS
Scale: 3/8" = 1'-0"



SECTION GC
Scale: 3/8" = 1'-0"



SECTION D-D
Scale: 3/8" = 1'-0"



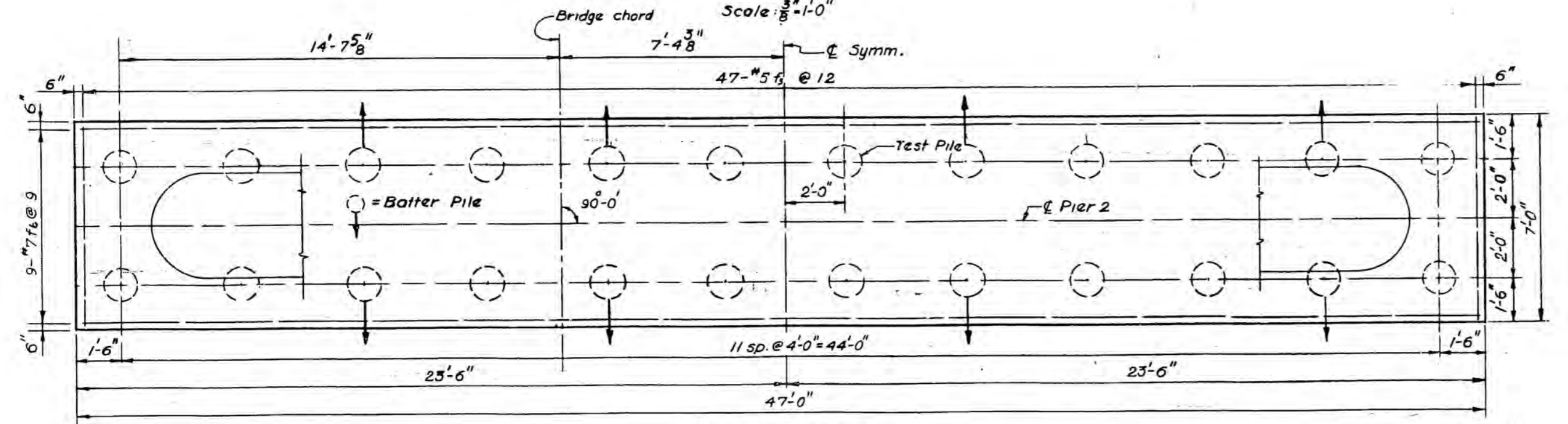
SECTION A-A
Scale: 3/8" = 1'-0"

PILE DATA
Type: Creosoted Timber
Minimum Capacity: 20 Tons
Estimated length: 30'-0"
No. Required: 23
(Does not include Test Piles)
Test Piles: 1

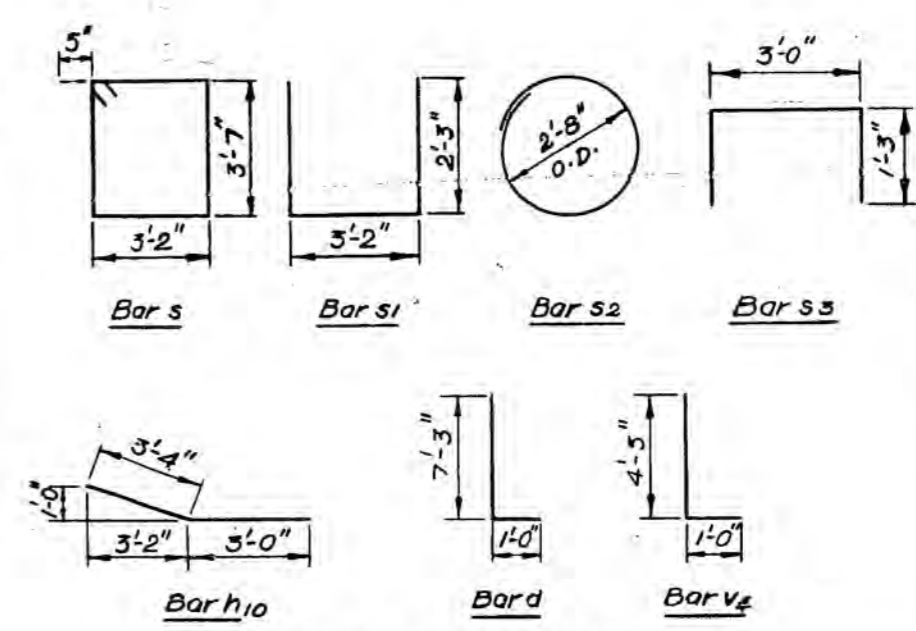
BILL OF MATERIALS PIER 2

Bar	No.	Size	Length	Shape
d	42	#8	8'-3"	L
f5	47	#5	6'-6"	—
f6	9	#7	46'-6"	—
h10	8	#8	6'-4"	—
h11	5	#8	47'-3"	—
h2	4	#9	10'-0"	—
h3	4	#6	47'-3"	—
h14	11	#8	40'-6"	—
h15	2	#8	35'-6"	—
h16	4	#6	38'-6"	—
s	34	#4	14'-4"	□
s1	16	#4	7'-8"	□
s2	36	#3	9'-3"	○
s3	34	#4	5'-6"	□
v5	42	#8	13'-6"	—
v6	68	#4	5'-5"	L

Class X Concrete Cu. Yds. 84.5
Reinforcement Bars Lbs. 7410
Class A Excav. for Struct. Cu. Yds. 74
Creosoted Piles, 20'-38" Lin. Ft. 690
Test Piles (Creosoted) Each 1



FOOTING PLAN
Scale: 3/8" = 1'-0"



BENDING DIAGRAMS
No Scale

STATE OF ILLINOIS
DEPARTMENT OF PUBLIC WORKS AND BUILDINGS
DIVISION OF HIGHWAYS

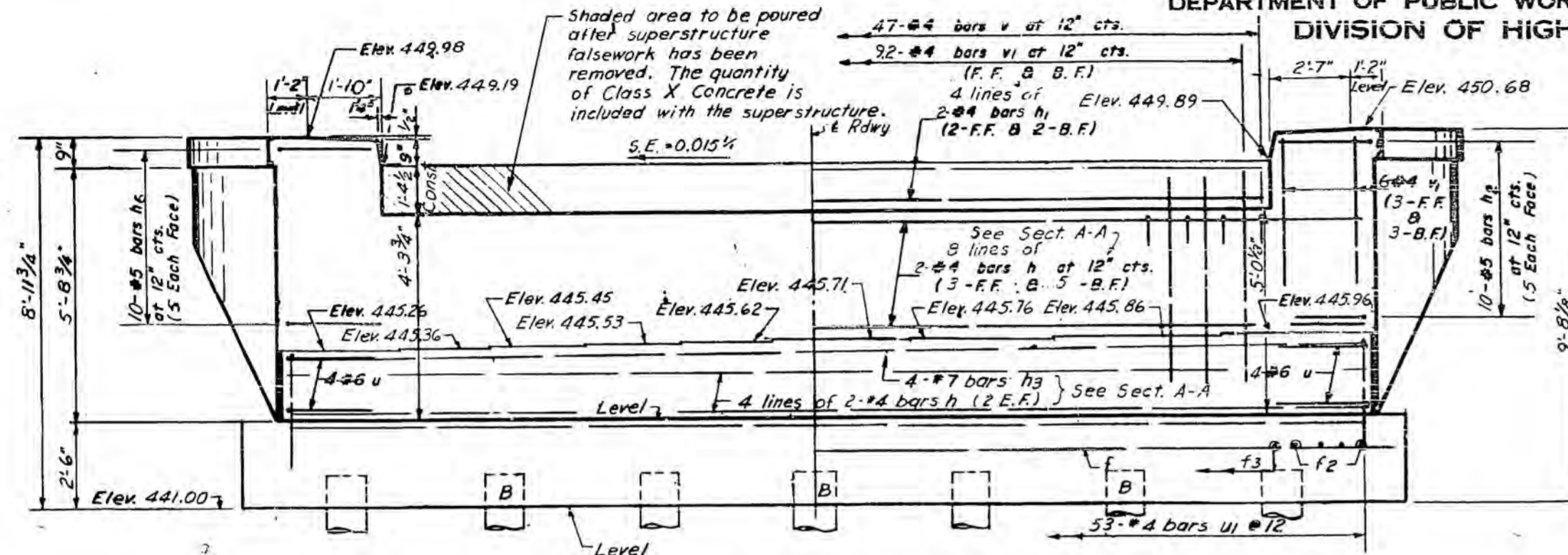
NO.	REVISION	BY	DATE
PIER 2			
SECTION 51-23 HB-2		STATION 576+87.10	
F.A.I. RTE. 64		PROJECT LAWRENCE COUNTY	
CLARK DAILY & DIETZ CONSULTING ENGINEERS URBANA, ILLINOIS			
DESIGNED RJA	SCALE AS NOTED	SHEET	
DRAWN RJM		OF	
CHECKED RLK	DATE 1-8-59		

JOB NO. 389-B

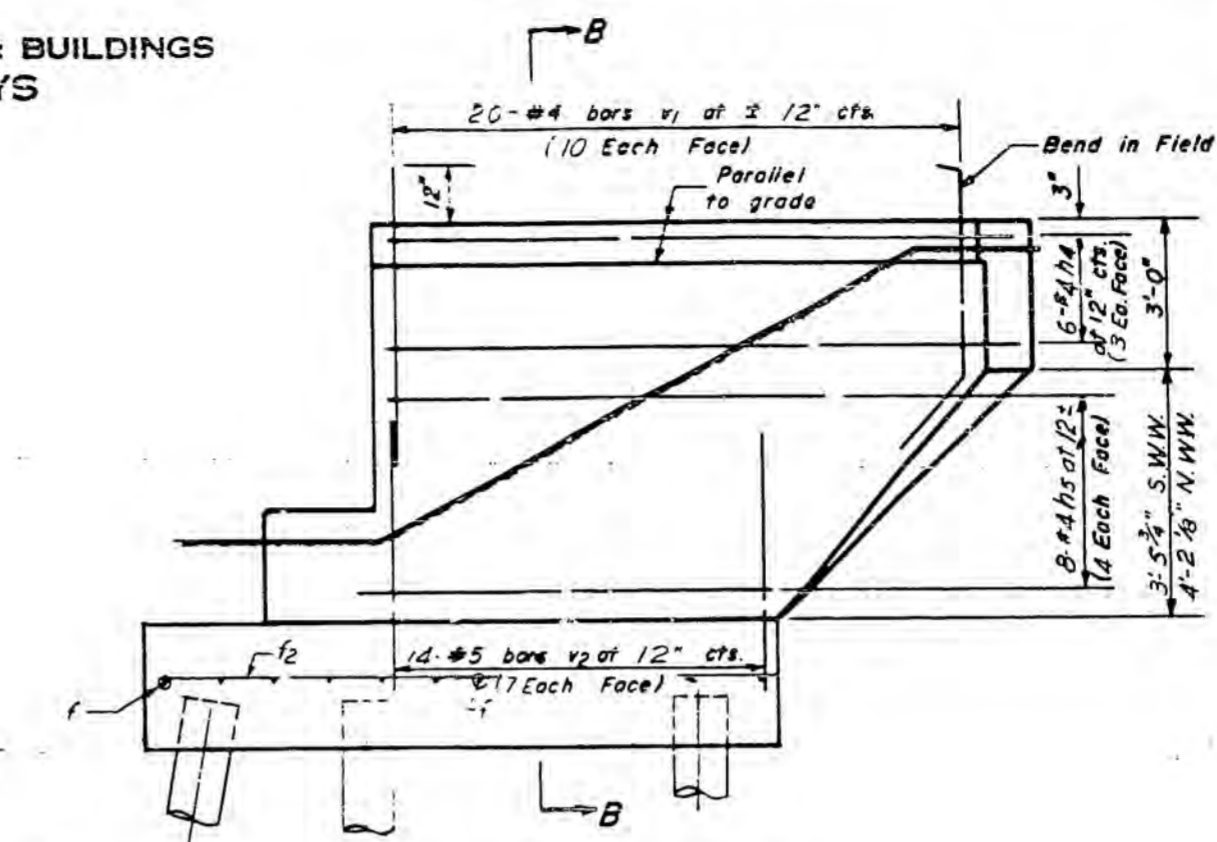
DESIGNED BY DATE CHECKED BY DATE IN CHARGE

STATE OF ILLINOIS
DEPARTMENT OF PUBLIC WORKS & BUILDINGS
DIVISION OF HIGHWAYS

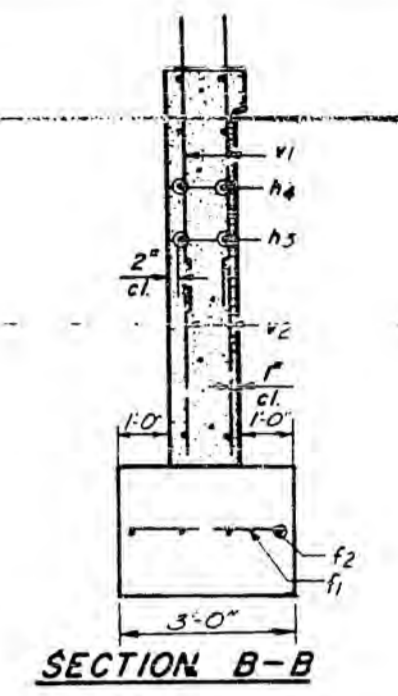
ROUTE NO.	SECTION	COUNTY	TOTAL SHEETS	SHEET NO.	SHEET NO. 6 11 SHEETS
6-4	51-23	LAWRENCE	19	9	
F.A.I. 6-4					
FEB. ROAD DIST. NO. 7 ILLINOIS FEB. 1959 PROJECT					



ELEVATION - Looking West

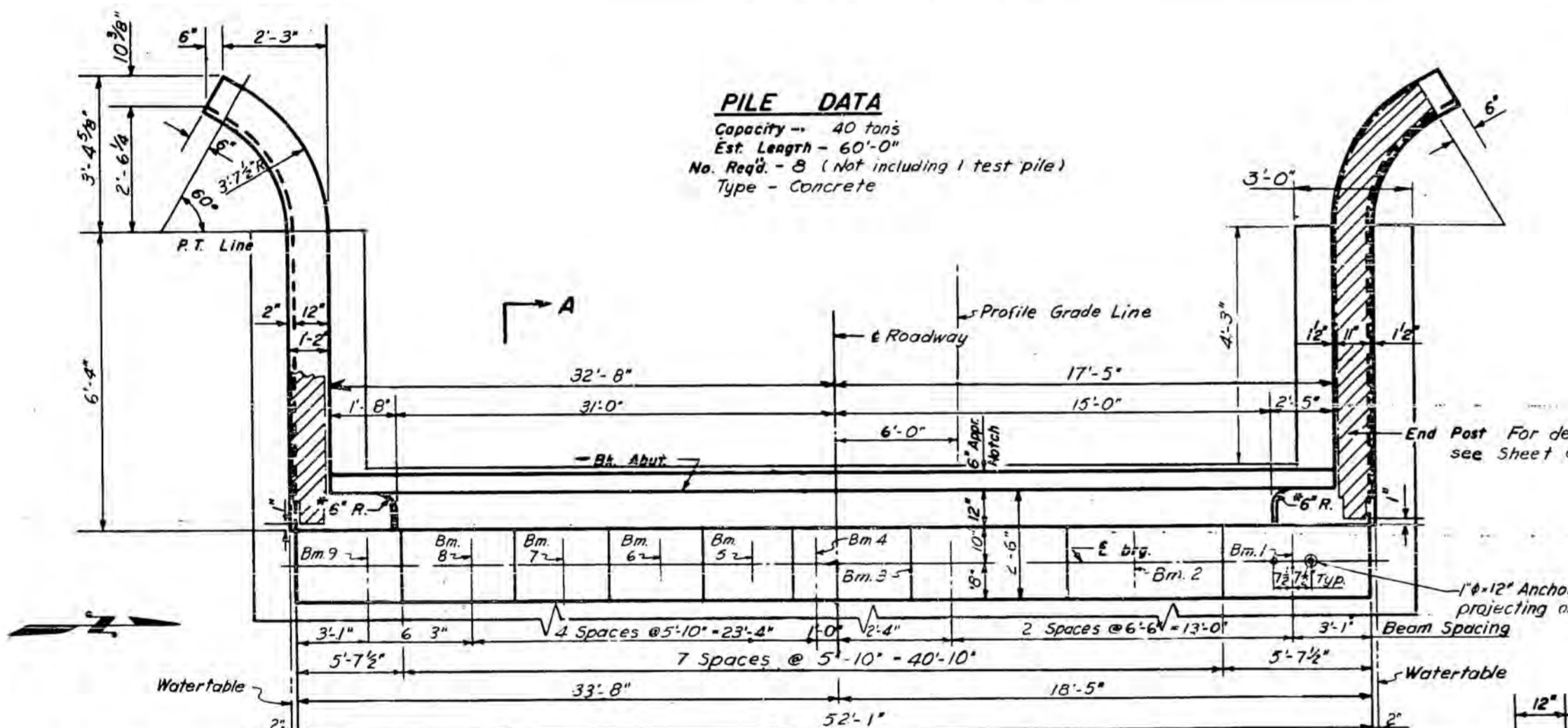


SIDE ELEVATION



PILE DATA

Capacity -- 40 tons
Est. Length - 60'-0"
No. Req'd - 8 (Not including 1 test pile)
Type - Concrete

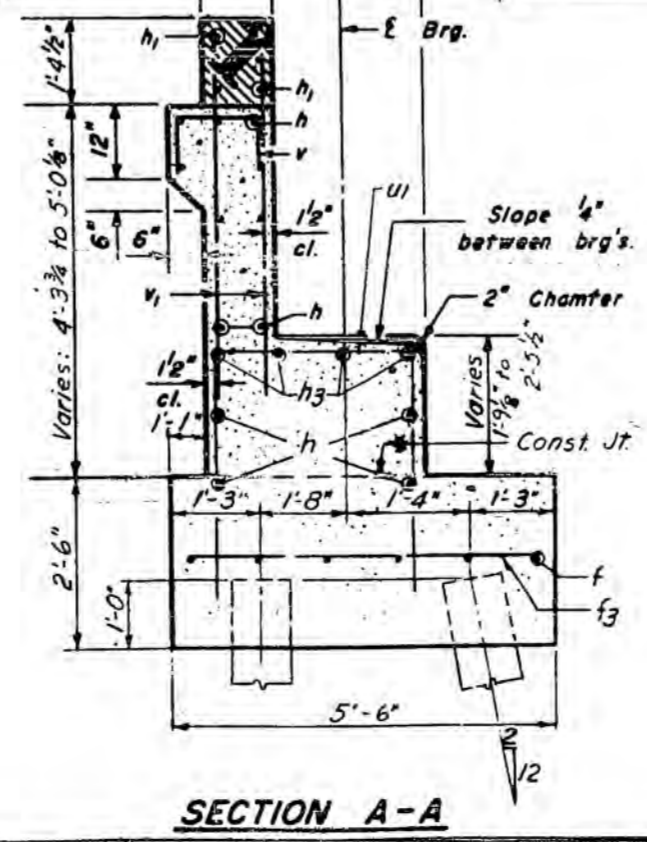
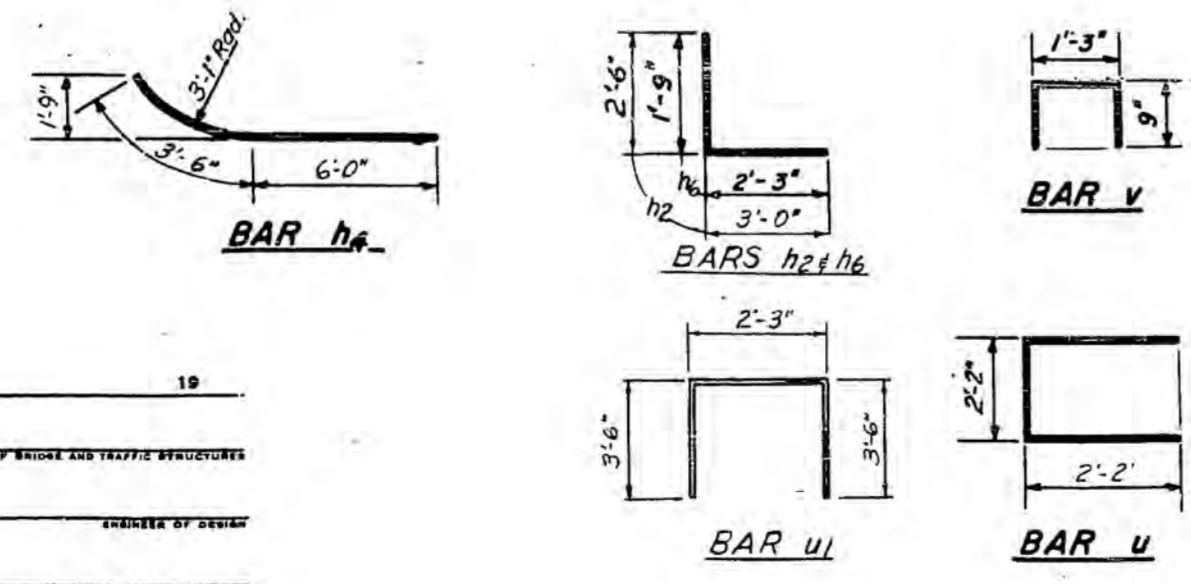


PLAN OF ABUTMENT Dimensions

PLAN OF ABUTMENT Reinforcement & Pile Spacing

Note: B indicates batter pile.

* Note: Contractor shall construct curb without radius when a curb & gutter are to be used on bridge approaches (See Road Plans).



BILL OF REINFORCEMENT

Bar	No.	Size	Length	Shape	Bar	No.	Size	Length	Shape
h	24	#4	26'-9"	—					
h ₁	8	#4	23'-6"	—					
h ₂	10	#5	5'-6"	—					
h ₃	4	#7	51'-9"	—					
h ₄	12	#5	9'-6"	—					
h ₅	16	#4	6'-6"	—					
h ₆	10	#5	4'-0"	—					
v	47	#4	2'-9"	—					
v ₁	144	#4	5'-0"	—					
v ₂	28	#5	5'-6"	—					
u	8	#6	6'-6"	—					
u ₁	53	#4	9'-3"	—					
f	6	#6	53'-7"	—					
f ₁	12	#5	2'-6"	—					
f ₂	8	#5	9'-3"	—					
f ₃	49	#4	5'-0"	—					

BILL OF MATERIAL

Item	UMF	Quantity
Class X Concrete	Cu. Yd.	48.9
Reinforcement Bars	Lb.	3,146
Concrete Piles	Lin. Ft.	480
Test Piles (Concrete)	Each	1

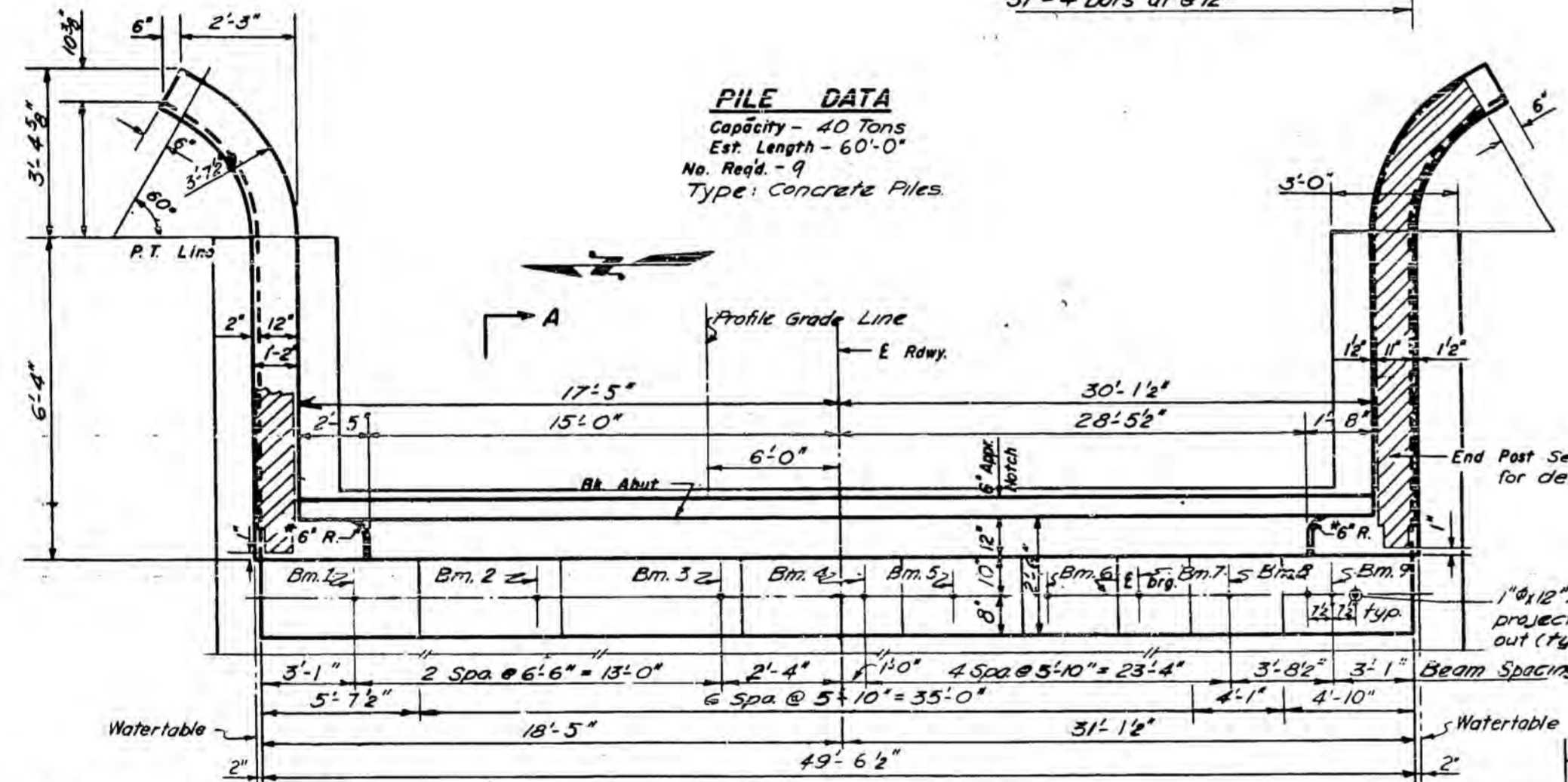
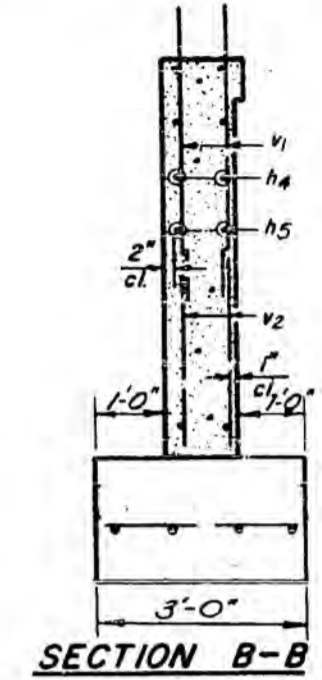
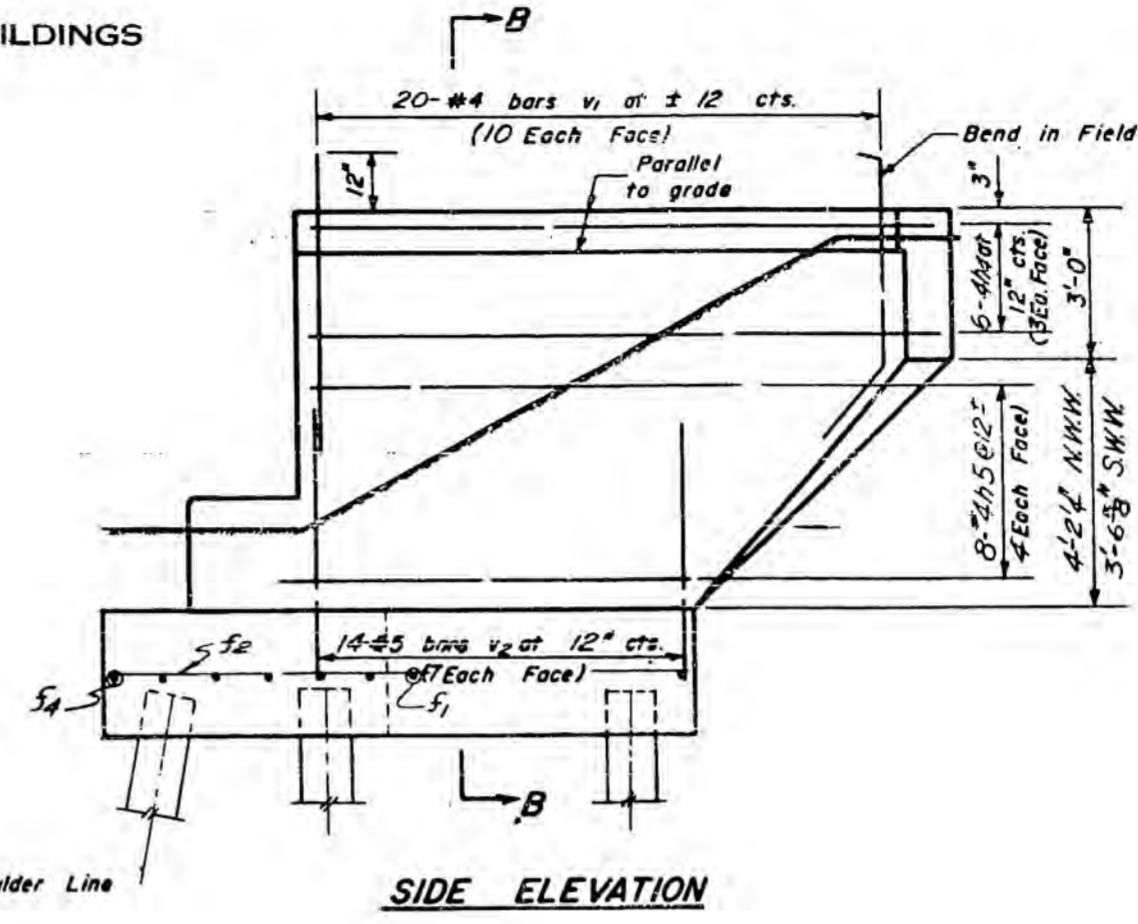
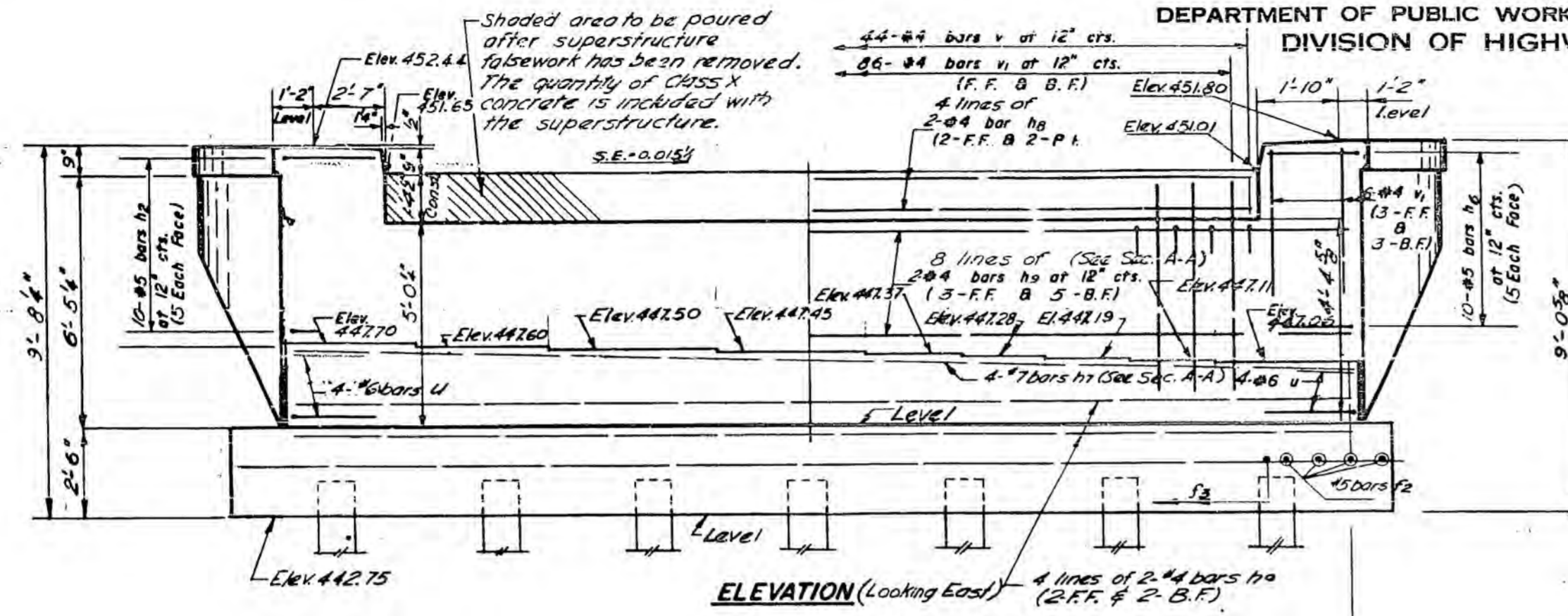
DESIGNED	19
CHECKED	EXAMINED
DRAWN W. A. Soudon	PASSED
CHECKED	APPROVED

NO.	REVISION	BY	DATE
WEST ABUTMENT			
SECTION 51-23HB-2		STATION 576 + 87.10	
F.A.I. RTE. 6-4		PROJECT	
LAWRENCE COUNTY		PROJECT	
CLARK DAILY & DIETZ CONSULTING ENGINEERS URBANA, ILLINOIS			
DESIGNED RWA	SCALE NONE	SHEET	
DRAWN RLK	DATE 1-5-59	OF	
CHECKED RUM			

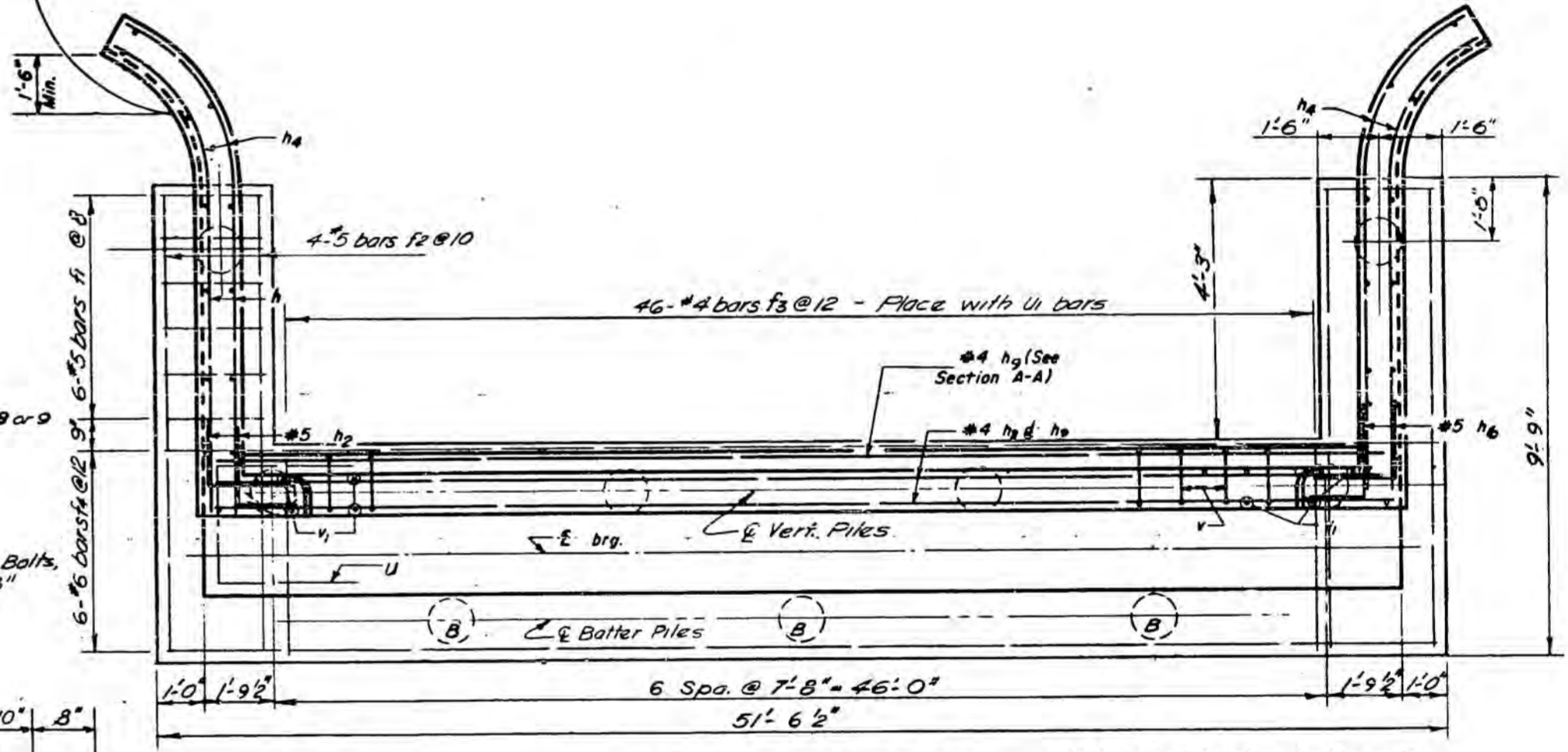
STATE OF ILLINOIS
DEPARTMENT OF PUBLIC WORKS & BUILDINGS
DIVISION OF HIGHWAYS

ROUTE NO.	SECTION	COUNTY	TOTAL SHEETS	SHEET NO.
1. A. 1. 64	51-23 HB-2	LAWRENCE	15	10
FED. ROAD DIST. NO. 7		ILLINOIS	PER. AID PROJECT	

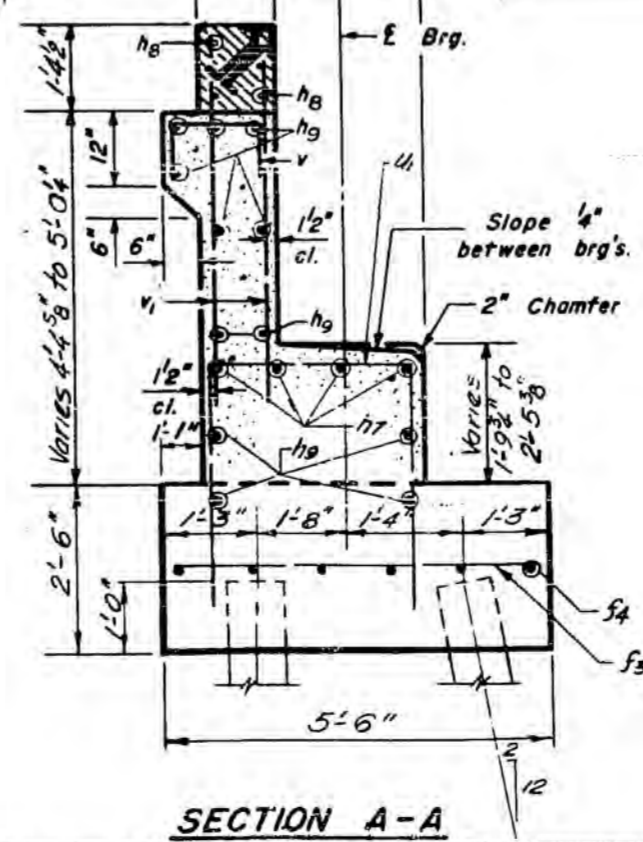
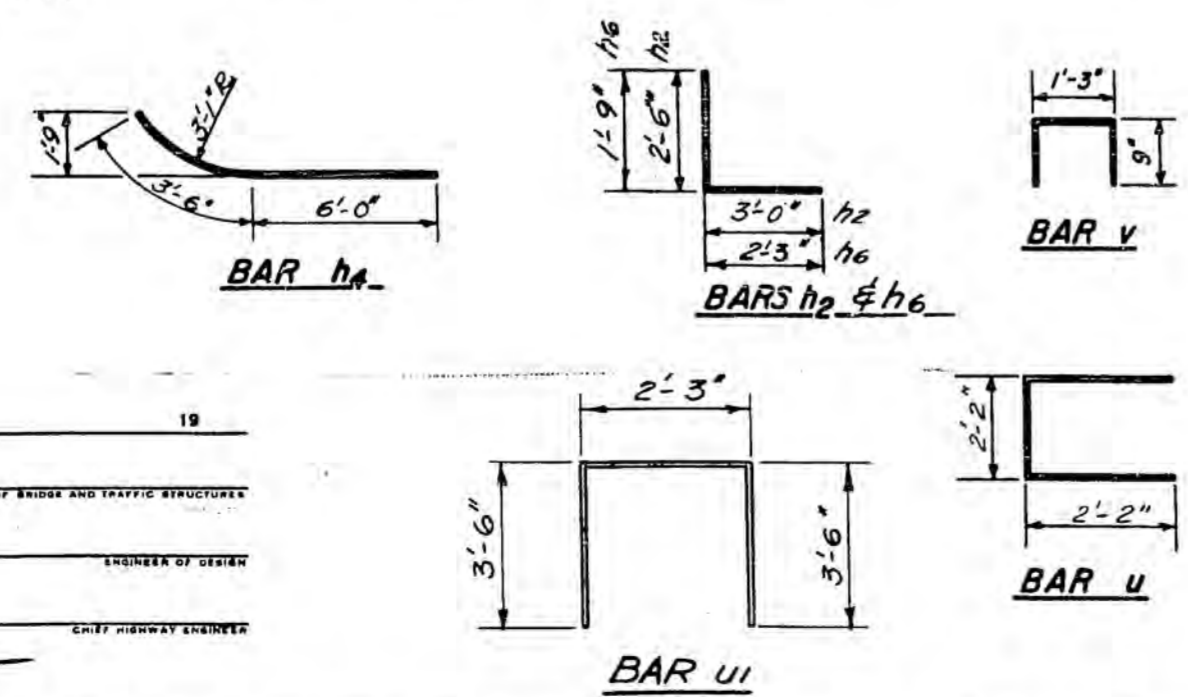
SHEET NO. 7
11 SHEETS



PILE DATA
Capacity - 40 Tons
Est. Length - 60'-0"
No. Req'd - 9
Type: Concrete Piles



* Note: Contractor shall construct curb without radius when a curb & gutter are to be used on bridge approaches (See Road Plans).



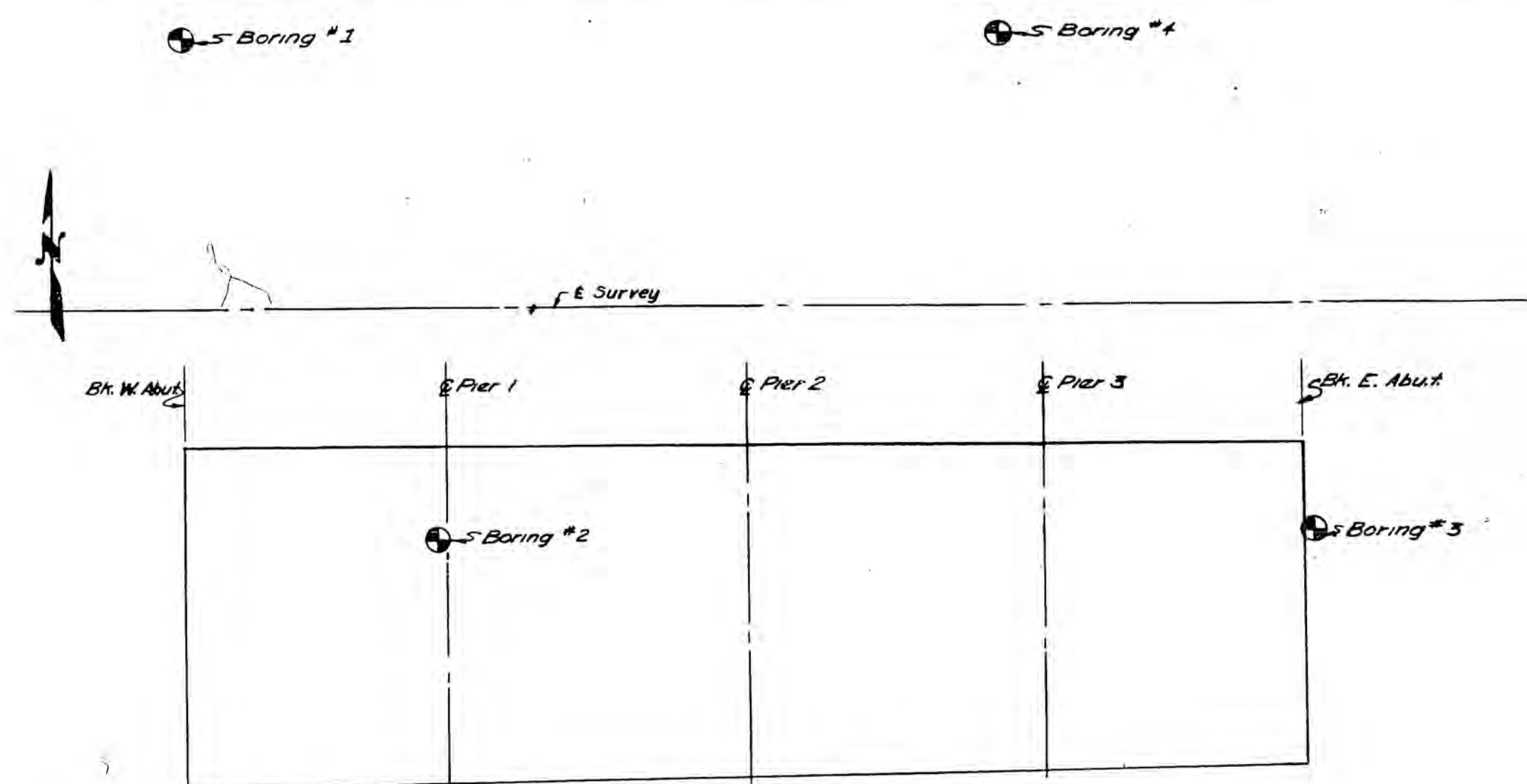
BILL OF REINFORCEMENT									
Bar No.	Size	Length	Shape	Bar No.	Size	Length	Shape	Bar No.	Size
h2	10	#5	5'-6"	h2	10	#5	5'-6"	h2	10
h4	12	#5	9'-6"	h4	12	#5	9'-6"	h4	12
h5	16	#4	6'-6"	h5	16	#4	6'-6"	h5	16
h6	10	#5	4'-0"	h6	10	#5	4'-0"	h6	10
h7	4	#7	49'-2"	h7	4	#7	49'-2"	h7	4
h8	8	#4	22'-3"	h8	8	#4	22'-3"	h8	8
h9	24	#4	25'-6"	h9	24	#4	25'-6"	h9	24
v	44	#4	2'-9"	v	44	#4	2'-9"	v	44
v1	138	#4	5'-0"	v1	138	#4	5'-0"	v1	138
v2	28	#5	5'-6"	v2	28	#5	5'-6"	v2	28
u	8	#6	6'-6"	u	8	#6	6'-6"	u	8
u1	51	#4	9'-3"	u1	51	#4	9'-3"	u1	51
f1	12	#5	2'-6"	f1	12	#5	2'-6"	f1	12
f2	8	#5	9'-3"	f2	8	#5	9'-3"	f2	8
f3	46	#4	5'-0"	f3	46	#4	5'-0"	f3	46
f4	6	#6	5'-2"	f4	6	#6	5'-2"	f4	6

BILL OF MATERIAL		
Item	Unit	Quantity
Class X Concrete	Cu. Yd.	47.4
Reinforcement Bars	Lb.	3,071
Concrete Piles	Lin. Ft.	540

DESIGNED	19
CHECKED	
DRAWN	W. A. Sousoman
CHECKED	
EXAMINED	
PASSED	
APPROVED	

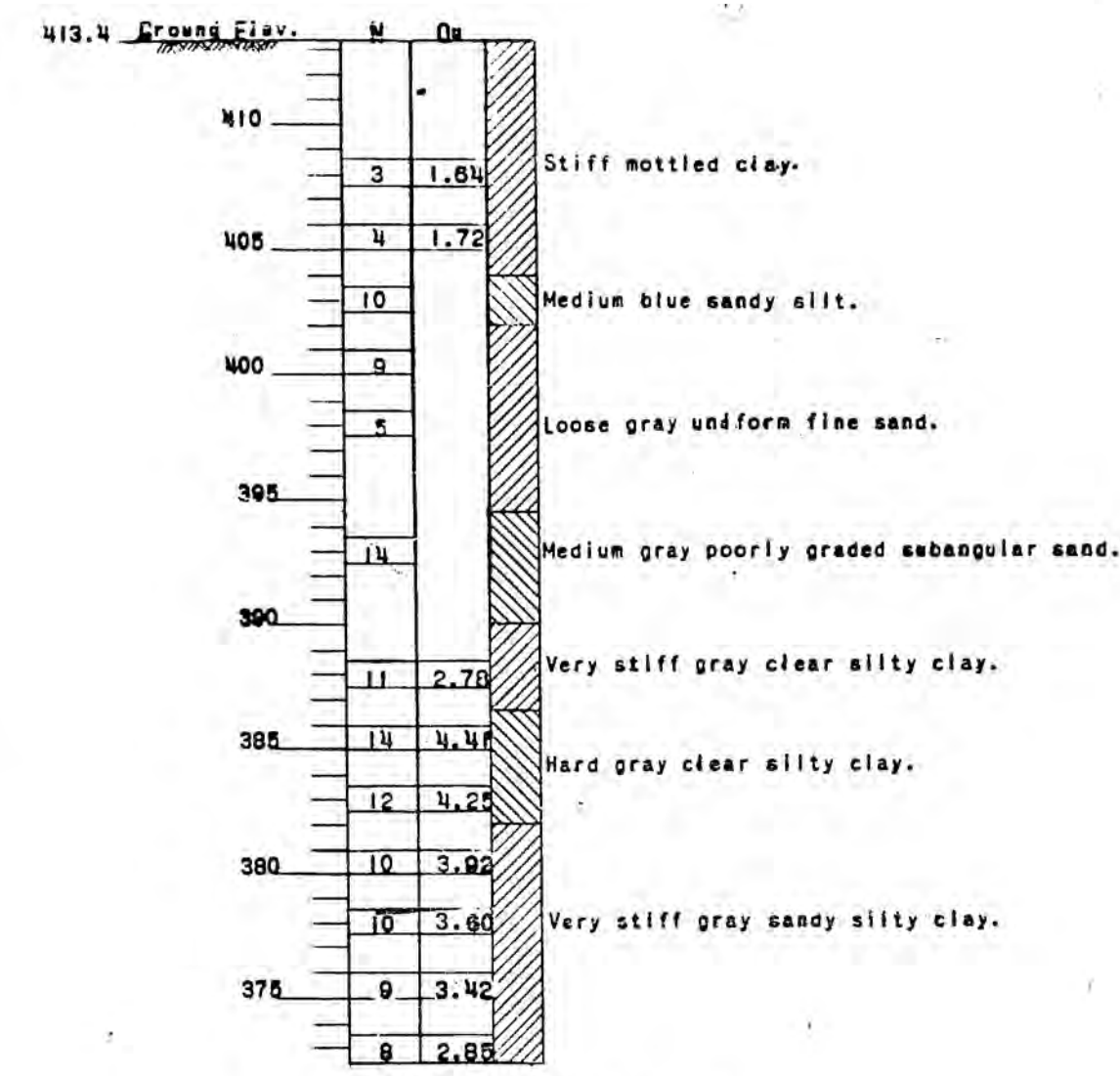
NO.	REVISION	BY	DATE
EAST ABUTMENT			
SECTION 51-23HB-2		STATION 576 + 87.10	
F.A.I. RTE. 54		PROJECT	
LAWRENCE COUNTY			
CLARK DAILY & DIETZ			
CONSULTING ENGINEERS			
URBANA, ILLINOIS			
DESIGNED RWA	SCALE NONE	SHEET	
DRAWN JWN	DATE 1-8-59	OF	
CHECKED RLK			

ROUTE NO.	SECTION	COUNTY	TOTAL SHEETS	SHEET NO.
F.A.I. 64	51-23 HB-2	LAWRENCE	19	13
DESIGNER	ENGINEER	PROJECT		

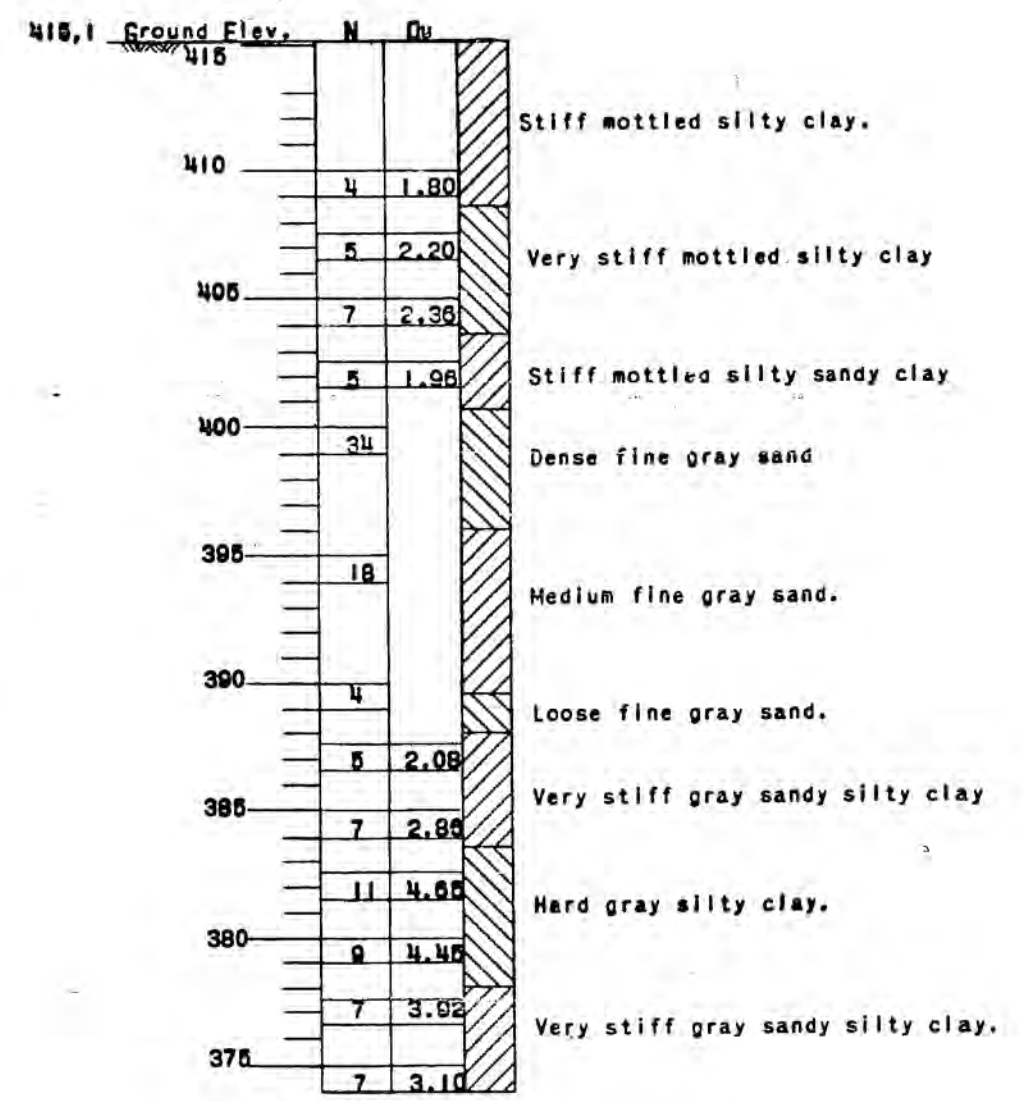


LOCATION OF BORINGS

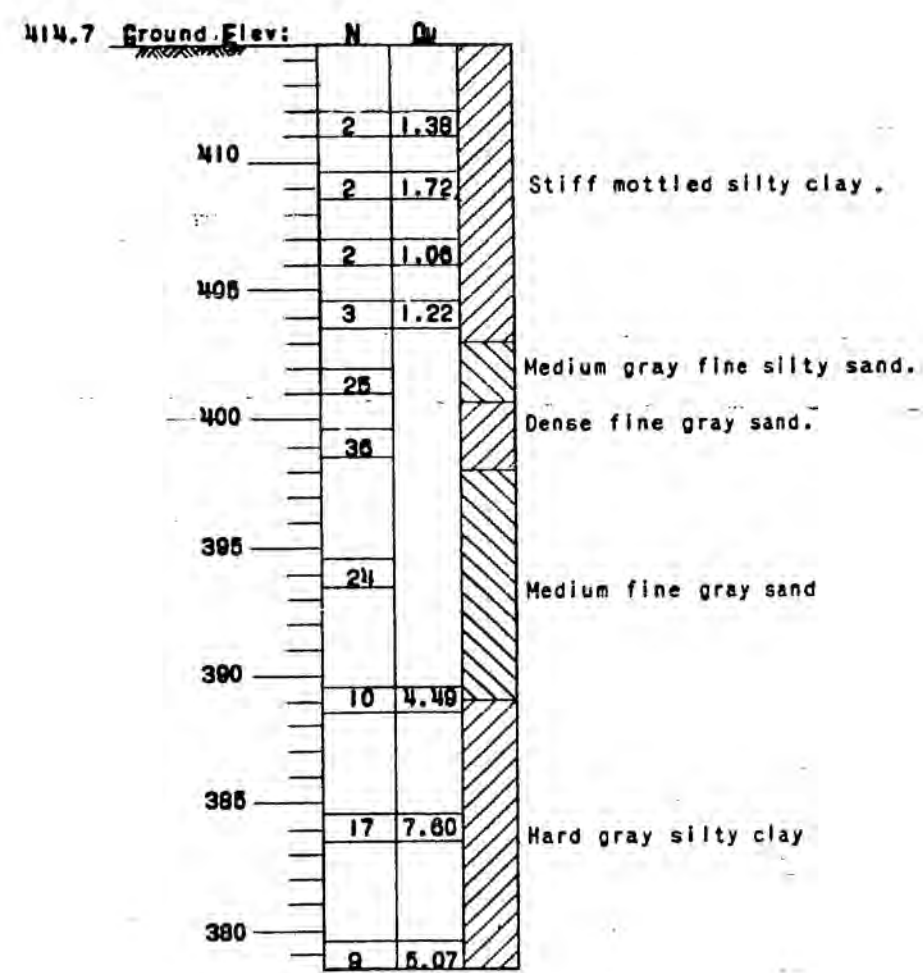
NOTE: N= Blows per foot of penetration of sampling spoon. Hammer weight 140 lbs. Drop 80 inches.
 Qu= Unconfined compressive strength in tons per square foot.



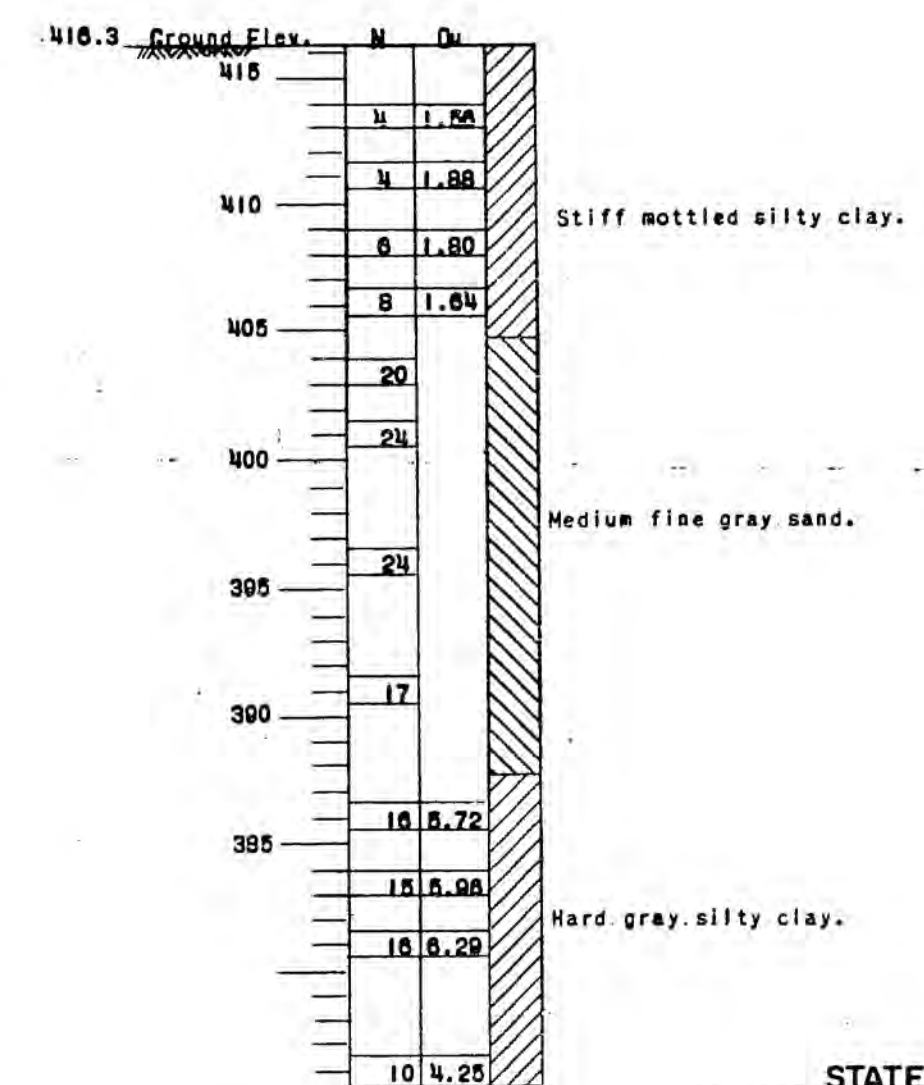
BORING NO. 1
STATION 576+83 42 FT. LT. CENTERLINE



BORING NO. 2
STATION 576+41 40 FT. RT. CENTERLINE



BORING NO. 3
STATION 577+72 39 FT. RT. CENTERLINE



BORING NO. 4
STATION 577+26 42 FT. LT. C.

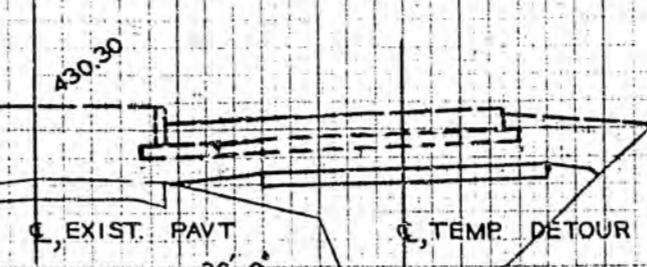
DESIGNED BY: DATE CHECKED BY: DATE IN CHARGE

STATE OF ILLINOIS
 DEPARTMENT OF PUBLIC WORKS AND BUILDINGS
 DIVISION OF HIGHWAYS

NO.	REVISION	BY	DATE
BORING DATA			
SECTION 51-23HB-2		STATION 576+87.10	
F.A.I. RTE. 6-4		PROJECT	
LAWRENCE COUNTY			
CLARK DAILY & DIETZ CONSULTING ENGINEERS URBANA, ILLINOIS			
DESIGNED	SCALE	SHEET	
DRAWN JWN	DATE 12-30-58	OF	
CHECKED R.L.K.	JOB NO. 389-3		

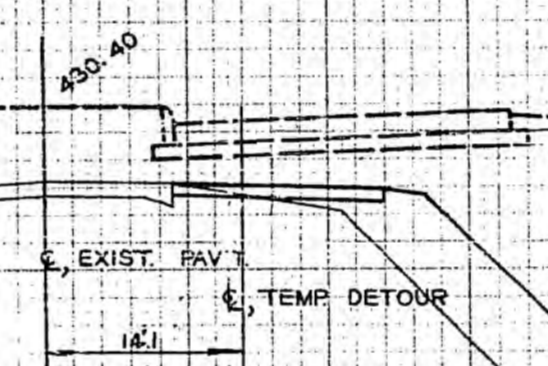
BRIDGE CONE

BRIDGE CONE



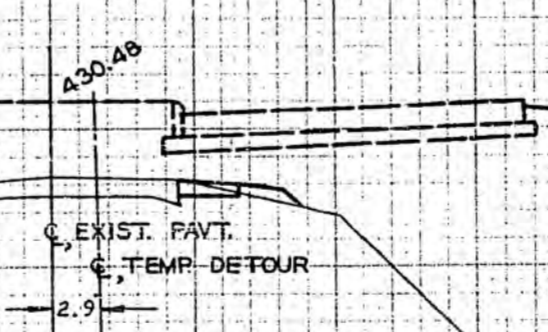
425
TO BUILD DETOUR
C=0
F=84

36
+
00



425
TO BUILD DETOUR
C=2
F=80

35
+
00



425
TO BUILD DETOUR
C=2
F=2

34
+
00

NOTE: DASHED LINES INDICATE PROPOSED CONSTRUCTION BY OTHERS.

8-57
2-58
2-58
2-59
CK
8-55
8-53

744

430
TO BUILD DETOUR
C=0
F=0

425
TO BUILD DETOUR
C=2
F=4

425
TO BUILD DETOUR
C=0
F=160

NOTE: DASHED LINES INDICATE PROPOSED CONSTRUCTION BY OTHERS.

2-57
2-58
2-59
2-60
2-61
2-62

714

