

106

STATE OF ILLINOIS
DEPARTMENT OF TRANSPORTATION

FAI ROUTE	SECTION	COUNTY	TOTAL SHEETS	SHEET NO.
74	137-2HB)BP	HENRY	26	1
CONTRACT NO. 64N07				

FOR INDEX OF SHEETS, SEE SHEET NO. 2
FOR STATE STANDARDS, SEE SHEET NO. 2

PROPOSED HIGHWAY PLANS

FAI ROUTE 74 (I-74)
SECTION: (37-2HB)BP
PROJECT: NHPP-QWEG(442)
TYPE of IMPROVEMENT: BRIDGE PAINTING
HENRY COUNTY

D.92-052-18

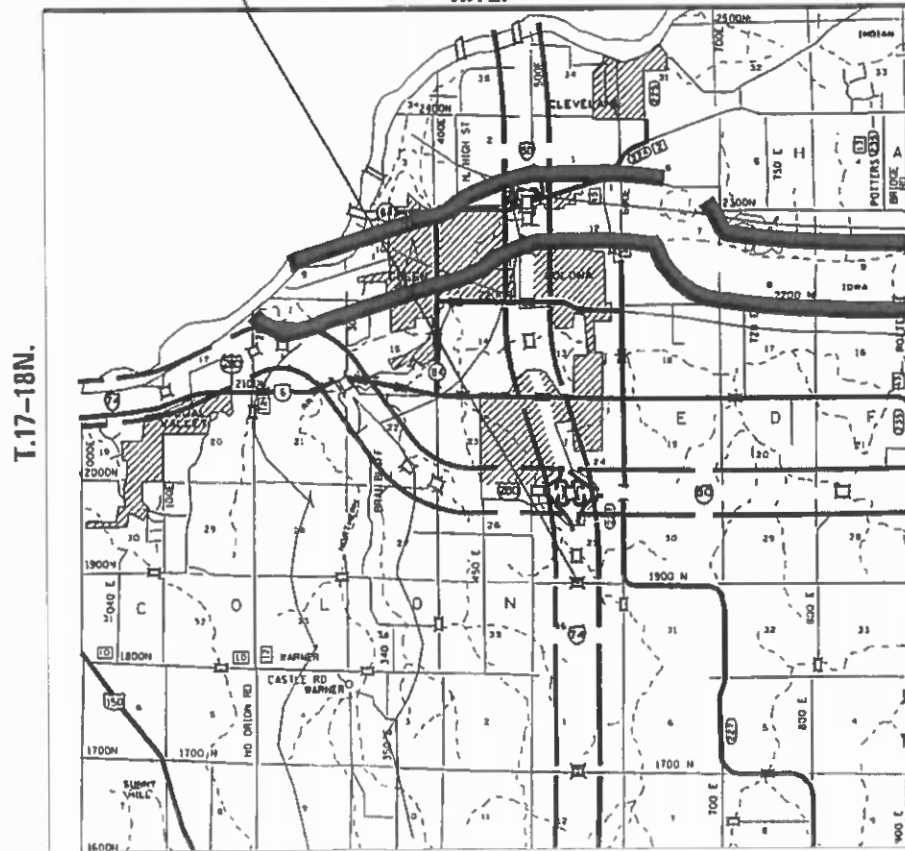


HENRY COUNTY
COLONA TOWNSHIP - SECTIONS 25 & 36

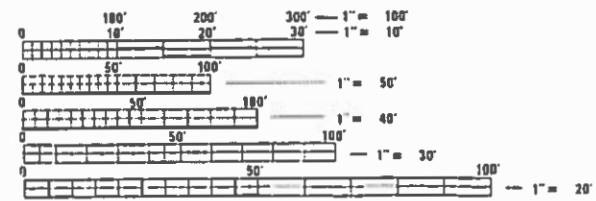
SN 037-0102

C-92-081-18

R.1E.



T.17-18N.



FULL SIZE PLANS HAVE BEEN PREPARED USING STANDARD
ENGINEERING SCALES. REDUCED SIZED PLANS WILL NOT
CONFORM TO STANDARD SCALES. IN MAKING MEASUREMENTS
ON REDUCED PLANS, THE ABOVE SCALES MAY BE USED.

J.U.L.I.E.
JOINT UTILITY LOCATION INFORMATION FOR EXCAVATION
1-800-892-0123
OR 811

PROJECT ENGINEER: DAVID DOSS (815) 284-5416
PROJECT MANAGER: MAHMOUD ETEMADI (815) 284-5393

CONTRACT NO. 64N07

STATE OF ILLINOIS
DEPARTMENT OF TRANSPORTATION

SUBMITTED 10.5.2018
 REGIONAL ENGINEER

Dec 7 2018
 ENGINEER OF DESIGN AND ENVIRONMENT

Dec 7 2018
 DIRECTOR OF HIGHWAYS PROJECT IMPLEMENTATION

PRINTED BY THE AUTHORITY
OF THE STATE OF ILLINOIS

INDEX OF SHEETS

- 1 COVER SHEET
- 2 INDEX OF SHEETS / STATE STANDARDS / GENERAL NOTES
- 3 SUMMARY OF QUANTITIES
- 4 SCHEDULE OF QUANTITIES
- 5 STAGING TYPICAL
- 6-9 TRAFFIC CONTROL PLAN - STAGE I FOR SN 037-0102
- 10-13 TRAFFIC CONTROL PLAN - STAGE II FOR SN 037-0102
- 14-17 TRAFFIC CONTROL PLAN - STAGE III FOR SN 037-0102
- 18-23 TRAFFIC CONTROL PLAN - STAGE IV FOR SN 037-0102
- 24-26 EXISTING PLAN SHEETS (FOR INFORMATION ONLY)

STATE STANDARDS

- 701101-05 OFF-ROAD OPERATIONS, MULTILANE, 15' (4.5m) TO 24" (600mm) FROM PAVEMENT EDGE
- 701301-04 LANE CLOSURE, 2L, 2W, SHORT TIME OPERATIONS
- 701400-09 APPROACH TO LANE CLOSURE, FREEWAY/EXPRESSWAY
- 701401-12 LANE CLOSURE, FREEWAY/EXPRESSWAY
- 701402-12 LANE CLOSURE, FREEWAY/EXPRESSWAY WITH BARRIER
- 701411-09 LANE CLOSURE, MULTILANE, AT ENTRANCE OR EXIT RAMP, FOR SPEEDS > 45 MPH
- 701426-09 LANE CLOSURE, MULTILANE, INTERMITTENT OR MOVING OPERATIONS, FOR SPEEDS ≥ 45 MPH
- 701901-08 TRAFFIC CONTROL DEVICES
- 704001-08 TEMPORARY CONCRETE BARRIER
- 720011-01 METAL POSTS FOR SIGNS, MARKERS & DELINEATORS
- 728001-01 TELESCOPING STEEL SIGN SUPPORT
- 729001-01 APPLICATIONS OF TYPES A & B METAL POSTS (FOR SIGNS & MARKERS)

GENERAL NOTES

A MINIMUM OF 2 AIR MONITORS WILL BE REQUIRED TO MONITOR ABRASIVE BLASTING OPERATIONS, SEE SPECIAL PROVISION FOR "CONTAINMENT AND DISPOSAL OF LEAD PAINT CLEANING RESIDUES".

THE CONTRACTOR SHALL SEED ALL DISTURBED AREAS WITHIN THE PROJECT LIMITS. SEEDING CLASS 2A SHALL BE USED. THIS WORK WILL BE INCLUDED IN THE CONTRACT UNIT PRICE PER LUMP SUM FOR CLEANING AND PAINTING STEEL BRIDGE NO. 1.

FERTILIZER SHALL BE APPLIED TO ALL DISTURBED AREAS AND INCORPORATED INTO THE SEEDBED PRIOR TO SEEDING OR PLACEMENT OF SOD AT THE RATE SPECIFIED IN SECTIONS 250 AND 252 OF THE STANDARD SPECIFICATIONS. THIS WORK SHALL BE INCLUDED IN THE COST OF CLEANING AND PAINTING STEEL BRIDGE NO. 1.

MULCH METHOD II SHALL BE APPLIED OVER ALL SEEDED AREAS. THIS SHALL BE INCLUDED IN THE COST OF THE CLEANING AND PAINTING STEEL BRIDGE NO. 1.

ALL BORROW/WASTE/USE SITES MUST BE APPROVED BY THE DEPARTMENT PRIOR TO REMOVING ANY MATERIAL FROM THE PROJECT OR INITIATING ANY EARTHMOVING ACTIVITIES, INCLUDING TEMPORARY STOCKPILING OUTSIDE THE LIMITS OF CONSTRUCTION.

TEMPORARY IMPACT ATTENUATORS WILL BE MEASURED AS EACH FOR EACH ATTENUATOR SUPPLIED ON THE JOB AS SPECIFIED IN THE PLANS, AND SHALL INCLUDE THE COST OF RENTING/OWNING THE ATTENUATOR FOR THE TIME REQUIRED ON THE JOB PLUS HAULING TO AND FROM THE PROJECT SITE, AS WELL AS ONE PLACEMENT AND REMOVAL FROM THE ROADWAY. THIS SHALL BE PAID FOR AT THE CONTRACT UNIT PRICE PER EACH FOR IMPACT ATTENUATORS, TEMPORARY OF THE TYPE SPECIFIED.

RELOCATE TEMPORARY IMPACT ATTENUATOR WILL BE PAID FOR AS EACH AND WILL BE PAID FOR EACH TIME THE ATTENUATOR IS REQUIRED BY STAGING TO BE PICKED UP AND MOVED TO A DIFFERENT LOCATION ON THE PROJECT, WHETHER IT IS TO ANOTHER LOCATION ON THE ROADWAY OR TO A STORAGE/STAGING LOCATION FOR THE PROJECT. THIS SHALL BE PAID FOR AT THE CONTRACT UNIT PRICE PER EACH FOR IMPACT ATTENUATORS, RELOCATE OF THE TYPE SPECIFIED.

THIS WORK SHALL BE DONE IN ACCORDANCE WITH SECTION 704 OF THE STANDARD SPECIFICATIONS. TEMPORARY CONCRETE BARRIER WILL BE MEASURED IN FEET ALONG THE CENTERLINE OF THE BARRIER AND SHALL INCLUDE THE COST OF RENTING/OWNING THE BARRIER FOR THE TIME REQUIRED ON THE JOB PLUS HAULING TO AND FROM THE PROJECT SITE, AS WELL AS ONE PLACEMENT AND REMOVAL FROM THE ROADWAY IN ACCORDANCE WITH SECTION 704 OF THE STANDARD AND SPECIFICATION. THIS SHALL BE PAID FOR AT THE CONTRACT UNIT PRICE PER FOOT FOR TEMPORARY CONCRETE BARRIER.

RELOCATE TEMPORARY CONCRETE BARRIER WILL BE PAID FOR IN FEET ALONG THE CENTERLINE OF THE BARRIER, AND WILL BE PAID FOR EACH TIME THE BARRIER IS REQUIRED BY STAGING TO BE PICKED UP AND MOVED TO A DIFFERENT LOCATION ON THE PROJECT, WHETHER IT IS TO ANOTHER LOCATION ON THE ROADWAY OR TO A STORAGE/STAGING LOCATION FOR THE PROJECT. THIS SHALL BE PAID FOR AT THE CONTRACT UNIT PRICE PER FOOT FOR RELOCATE TEMPORARY CONCRETE BARRIER.

THE CONTRACTOR SHALL BE RESPONSIBLE FOR PROTECTING UTILITY PROPERTY DURING CONSTRUCTION OPERATIONS AS OUTLINED IN ARTICLE 107.31 OF THE STANDARD SPECIFICATIONS. A MINIMUM OF 48 HOURS ADVANCE NOTICE IS REQUIRED FOR NON-EMERGENCY WORK. THE JULIE NUMBER IS 800-892-0123.

THE SSPC QP1 & QP2 CONTRACT CERTIFICATIONS WILL BE REQUIRED FOR THIS CONTRACT.

MODEL: Default
FILE: \\nas01c.pva1.llnwd.net\B&E\IDNT\EG\Illinois\gov\PIWDOT\Documents\10DOT_Offices\Director\Projects\Operations\Bldg_Section\Henry\037-0102\64N07\CADD\02-rlt-coner.dgn

USER NAME = dossed	DESIGNED - _____	REVISED - _____	STATE OF ILLINOIS DEPARTMENT OF TRANSPORTATION	INDEX OF SHEETS, STATE STANDARDS & GENERAL NOTES		F.A.I. RTE.	SECTION	COUNTY	TOTAL SHEETS	SHEET NO.
DRAWN - _____	REVISED - _____	REVISED - _____		74	(37-2HB)BP	HENRY	26	2		
PLOT SCALE = 40.0000 ' / in.	CHECKED - _____	REVISED - _____		CONTRACT NO. 64N07						
PLOT DATE = Oct-01-2018 02:45:31 PM	DATE - _____	REVISED - _____		SCALE: _____	SHEET _____ OF _____ SHEETS	STA. _____ TO STA. _____	ILLINOIS FED. AID PROJECT			

SUMMARY OF QUANTITIES

CODE NUMBER	ITEM	UNIT	HENRY COUNTY	TOTAL QUANTITY
			0047 90% NHPP 10% STATE	
67100100	MOBILIZATION	L SUM	1	1
70100207	TRAFFIC CONTROL AND PROTECTION, STANDARD 701402	EACH	2	2
70100800	TRAFFIC CONTROL AND PROTECTION, STANDARD 701401	L SUM	1	1
70100420	TRAFFIC CONTROL AND PROTECTION, STANDARD 701411	EACH	1	1
70107004	PAVEMENT MARKING BLACKOUT TAPE, 4"	FOOT	1320	1320
70300150	SHORT TERM PAVEMENT MARKING REMOVAL	SQ FT	440	440
70300904	PAVEMENT MARKING TAPE, TYPE IV 4"	FOOT	9675	9675
70400100	TEMPORARY CONCRETE BARRIER	FOOT	462.5	462.5
70400200	RELOCATE TEMPORARY CONCRETE BARRIER	FOOT	712.5	712.5
70600250	IMPACT ATTENUATORS, TEMPORARY (NON-REDIRECTIVE), TEST LEVEL 3	EACH	1	1
70600350	IMPACT ATTENUATORS, RELOCATE (NON-REDIRECTIVE), TEST LEVEL 3	EACH	3	3
X5067501	BRIDGE CLEANING AND PAINTING WARRANTY NUMBER 1	L SUM	1	1
X7030005	TEMPORARY PAVEMENT MARKING REMOVAL	SQ FT	3225	3225
Z0007101	CONTAINMENT AND DISPOSAL OF LEAD PAINT CLEANING RESIDUES NO. 1	L SUM	1	1
Z0010501	CLEANING AND PAINTING STEEL BRIDGE NO. 1	L SUM	1	1

MODEL: Default
 FILE NAME: P:\11108\B&E\BID\ITEC\Illinois.gov\PWIDOT\Documents\DOT_Offices\District 2\Projects\Operations\Bridges_Section\Henry0317_010316\407\CADD\02-shit-cover.dgn

USER NAME = dossdd	DESIGNED - _____	REVISED - _____
DRAWN - _____	CHECKED - _____	REVISED - _____
PLOT SCALE = 40.0000' / in.	DATE - _____	REVISED - _____
PLOT DATE = Oct-01-2018 02:45:40 PM		

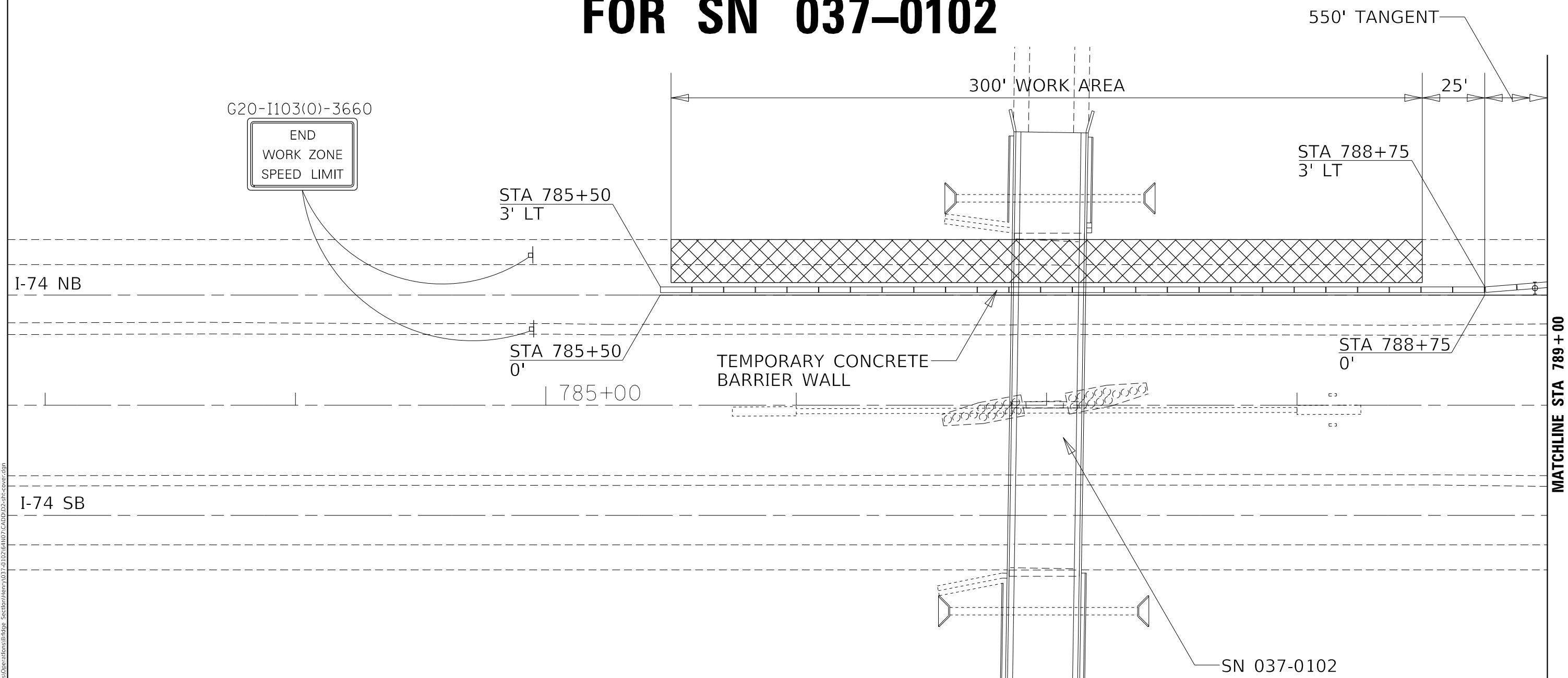
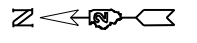
**STATE OF ILLINOIS
DEPARTMENT OF TRANSPORTATION**

SUMMARY OF QUANTITIES

SCALE: _____ SHEET ____ OF ____ SHEETS STA. _____ TO STA. _____

F.A.I. RTE.	SECTION	COUNTY	TOTAL SHEETS	SHEET NO.
74	(37-2HB)BP	HENRY	26	3
CONTRACT NO. 64N07				
ILLINOIS FED. AID PROJECT				

TRAFFIC CONTROL PLAN – STAGE I FOR SN 037-0102



SYMBOLS

- Arrow board
- Work area
- Sign
- Direction indicator barricade with steady burn monodirectional light
- Type II barricade or drum with steady burn monodirectional light
- Temporary concrete barrier
- Monodirectional barrier wall/guardrail marker
- Impact attenuator
- Drums with steady burning monodirectional light

NOTES

- ① Reflectorized temporary pavement marking shall be placed throughout the taper and along-side the work area. The edge line shall be white for right lane closure and yellow for left lane closures.
- ② Vertical panels at 7.6 m (25') centers with steady burning monodirectional lights.

MODEL: Default
 FILE: \\nas01\pwwork\pwwork\Documents\DOT_Offices\Director\Projects\Operations\Bldg - Section\Henry\037-0102\64N07\CADD\02-ctrl-stage1.dgn

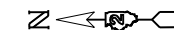
USER NAME = dossed	DESIGNED - _____	REVISED - _____
PLOT SCALE = 40,0000 ' / in.	DRAWN - _____	REVISED - _____
PLOT DATE = Oct-01-2018 02:46:12 PM	CHECKED - _____	REVISED - _____
	DATE - _____	REVISED - _____

**STATE OF ILLINOIS
DEPARTMENT OF TRANSPORTATION**

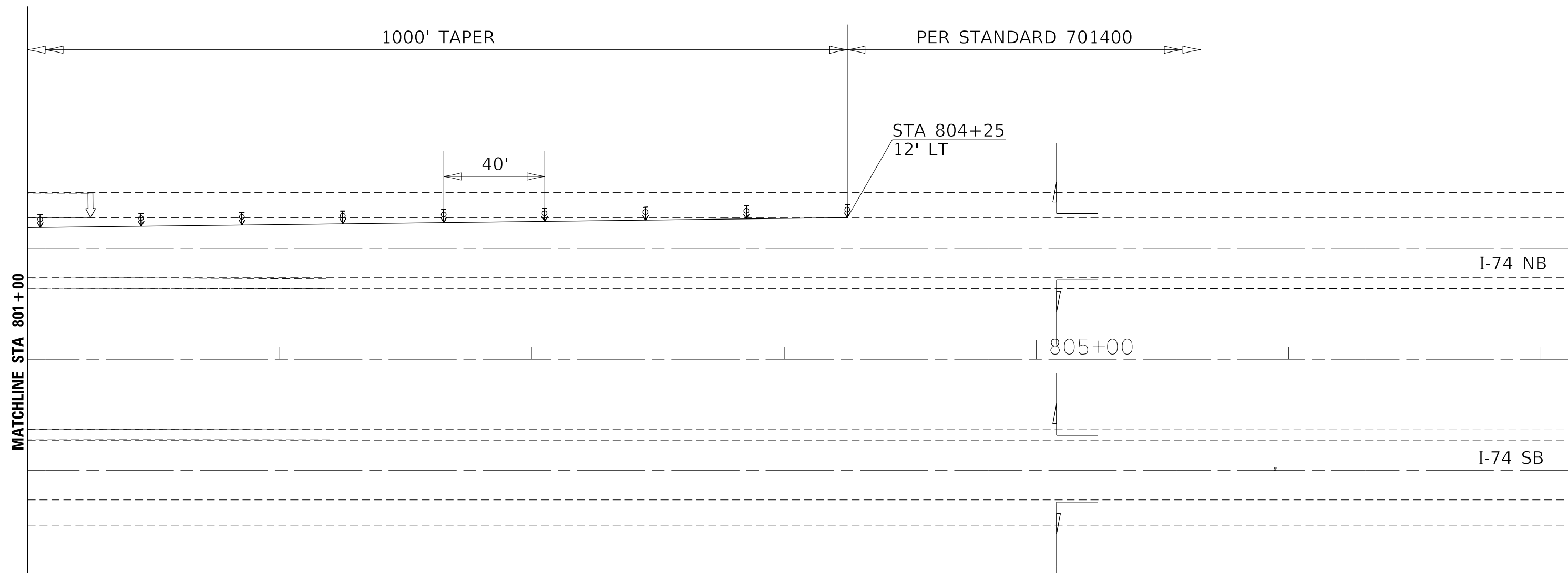
**TRAFFIC CONTROL PLAN – STAGE I
FOR SN 037-0102**

SCALE: _____ SHEET _____ OF _____ SHEETS STA. _____ TO STA. _____

F.A.I. RTE.	SECTION	COUNTY	TOTAL SHEETS	SHEET NO.
74	(37-2HB)BP	HENRY	26	6
ILLINOIS FED. AID PROJECT			CONTRACT NO. 64N07	



TRAFFIC CONTROL PLAN – STAGE I FOR SN 037–0102



SYMBOLS

- Arrow board
- Work area
- Sign
- Direction indicator barricade with steady burn monodirectional light
- Type II barricade or drum with steady burn monodirectional light
- Temporary concrete barrier
- Monodirectional barrier wall/guardrail marker
- Impact attenuator
- Drums with steady burning monodirectional light

NOTES

- ① Reflectorized temporary pavement marking shall be placed throughout the taper and along-side the work area. The edge line shall be white for right lane closure and yellow for left lane closures.
- ② Vertical panels at 7.6 m (25') centers with steady burning monodirectional lights.

MODEL: Default
 FILE: \\nas0101\BIBID\BIBID\TEC\Illinois\pav\pvd\DOT\Documents\1\DOT_Offices\Director\2\Projects\Operations\B4\figs_Section\I74\037-0102\64N07\CADD\02-traffic-control.dgn

USER NAME = drossdd	DESIGNED - _____	REVISED - _____
	DRAWN - _____	REVISED - _____
PLOT SCALE = 40,0000 ' / in.	CHECKED - _____	REVISED - _____
PLOT DATE = Oct-01-2018 02:46:37 PM	DATE - _____	REVISED - _____

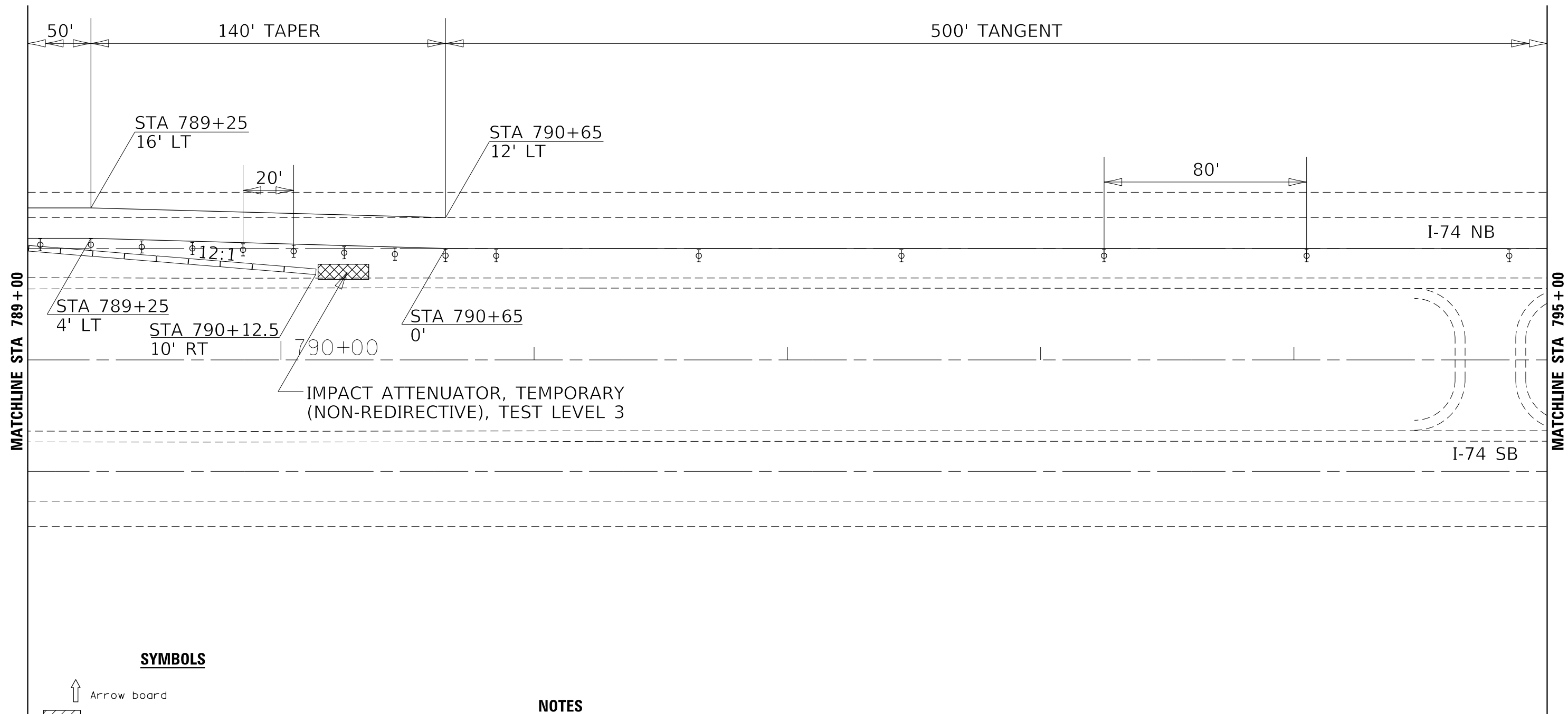
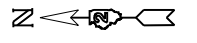
STATE OF ILLINOIS
DEPARTMENT OF TRANSPORTATION

TRAFFIC CONTROL PLAN – STAGE I
FOR SN 037–0102

SCALE: _____ SHEET _____ OF _____ SHEETS STA. _____ TO STA. _____

F.A.I. RTE.	SECTION	COUNTY	TOTAL SHEETS	SHEET NO.
74	(37-2HB)BP	HENRY	26	9
ILLINOIS FED. AID PROJECT			CONTRACT NO. 64N07	

TRAFFIC CONTROL PLAN – STAGE II FOR SN 037-0102



SYMBOLS

- Arrow board
- Work area
- Sign
- Direction indicator barricade with steady burn monodirectional light
- Type II barricade or drum with steady burn monodirectional light
- Temporary concrete barrier
- Monodirectional barrier wall/guardrail marker
- Impact attenuator
- Drums with steady burning monodirectional light

NOTES

- ① Reflectorized temporary pavement marking shall be placed throughout the taper and along-side the work area. The edge line shall be white for right lane closure and yellow for left lane closures.
- ② Vertical panels at 7.6 m (25') centers with steady burning monodirectional lights.

MODEL: Default
FILE: \\nas0101\BIBID\BIBID\TEC\Illinois\poc\p1\DOT\Documents\1\DOT_Offices\Director\2\Projects\Operations\B4\figs_Section\Henry\037-0102\64N07\CADD\02-traffic-control.dgn

USER NAME = drossdd	DESIGNED - _____	REVISED - _____
	DRAWN - _____	REVISED - _____
PLOT SCALE = 40,0000' / in.	CHECKED - _____	REVISED - _____
PLOT DATE = Oct-01-2018 02:46:54 PM	DATE - _____	REVISED - _____

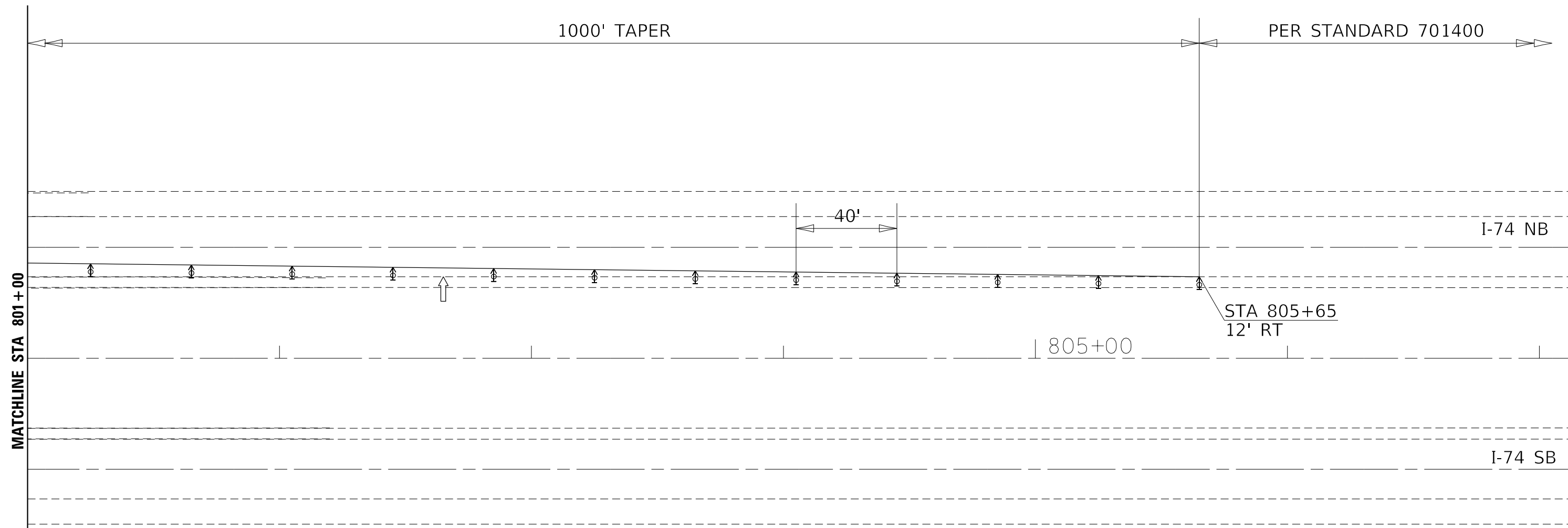
**STATE OF ILLINOIS
DEPARTMENT OF TRANSPORTATION**

**TTRAFFIC CONTROL PLAN – STAGE II
FOR SN 037-0102**

SCALE: _____ SHEET _____ OF _____ SHEETS STA. _____ TO STA. _____

F.A.I. RTE.	SECTION	COUNTY	TOTAL SHEETS	SHEET NO.
74	(37-2HB)BP	HENRY	26	11
CONTRACT NO. 64N07				
ILLINOIS FED. AID PROJECT				

TRAFFIC CONTROL PLAN – STAGE II FOR SN 037-0102



SYMBOLS

- Arrow board
- Work area
- Sign
- Direction indicator barricade with steady burn monodirectional light
- Type II barricade or drum with steady burn monodirectional light
- Temporary concrete barrier
- Monodirectional barrier wall/guardrail marker
- Impact attenuator
- Drums with steady burning monodirectional light

NOTES

- ① Reflectorized temporary pavement marking shall be placed throughout the taper and along-side the work area. The edge line shall be white for right lane closure and yellow for left lane closures.
- ② Vertical panels at 7.6 m (25') centers with steady burning monodirectional lights.

MODEL: Default
 FILE: \\nas0101\BIBID\BIBID\TEC\Illinois\proj\RID\DOT\Documents\18DOT_Offices\Director\2\Projects\Operations\BIBID\figs_Section\leery037-0102\64N07\CADD\02-plt-cover.dgn

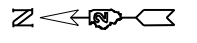
USER NAME = drossdd	DESIGNED - _____	REVISED - _____
PLOT SCALE = 40,0000 ' / in.	DRAWN - _____	REVISED - _____
PLOT DATE = Oct-01-2018 02:47:09 PM	CHECKED - _____	REVISED - _____
	DATE - _____	REVISED - _____

**STATE OF ILLINOIS
DEPARTMENT OF TRANSPORTATION**

TTRAFFIC CONTROL PLAN – STAGE II FOR SN 037-0102			
SCALE: _____	SHEET _____	OF _____ SHEETS	STA. _____ TO STA. _____

F.A.I. RTE.	SECTION	COUNTY	TOTAL SHEETS	SHEET NO.
74	(37-2HB)BP	HENRY	26	13
			CONTRACT NO. 64N07	
		ILLINOIS	FED. AID PROJECT	

TRAFFIC CONTROL PLAN – STAGE III FOR SN 037-0102



I-74 NB

I-74 SB

770+00

STA 768+35
12' LT

50+00

40'

55+00

PER STANDARD 701400
SYMBOLS

1000' TAPER

MATCHLINE STA 773+00

- Arrow board
- Work area
- Sign
- Direction indicator barricade with steady burn monodirectional light
- Type II barricade or drum with steady burn monodirectional light
- Temporary concrete barrier
- Monodirectional barrier wall/guardrail marker
- Impact attenuator
- Drums with steady burning monodirectional light

NOTES

- ① Reflectorized temporary pavement marking shall be placed throughout the taper and along-side the work area. The edge line shall be white for right lane closure and yellow for left lane closures.
- ② Vertical panels at 7.6 m (25') centers with steady burning monodirectional lights.

MODEL: Default
FILE: \\nas0101\BIBID\BIBID\ITC\Illinois\gov\pww\DOT\Documents\DOT Office\Director\2\Projects\Operations\B4\figs_Section\I74\037-0102\64N07\CADD\02-21t-concr.dgn

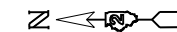
USER NAME = drossdd	DESIGNED - _____	REVISED - _____
	DRAWN - _____	REVISED - _____
PLOT SCALE = 40,0000 ' / in.	CHECKED - _____	REVISED - _____
PLOT DATE = Oct-01-2018 02:47:25 PM	DATE - _____	REVISED - _____

**STATE OF ILLINOIS
DEPARTMENT OF TRANSPORTATION**

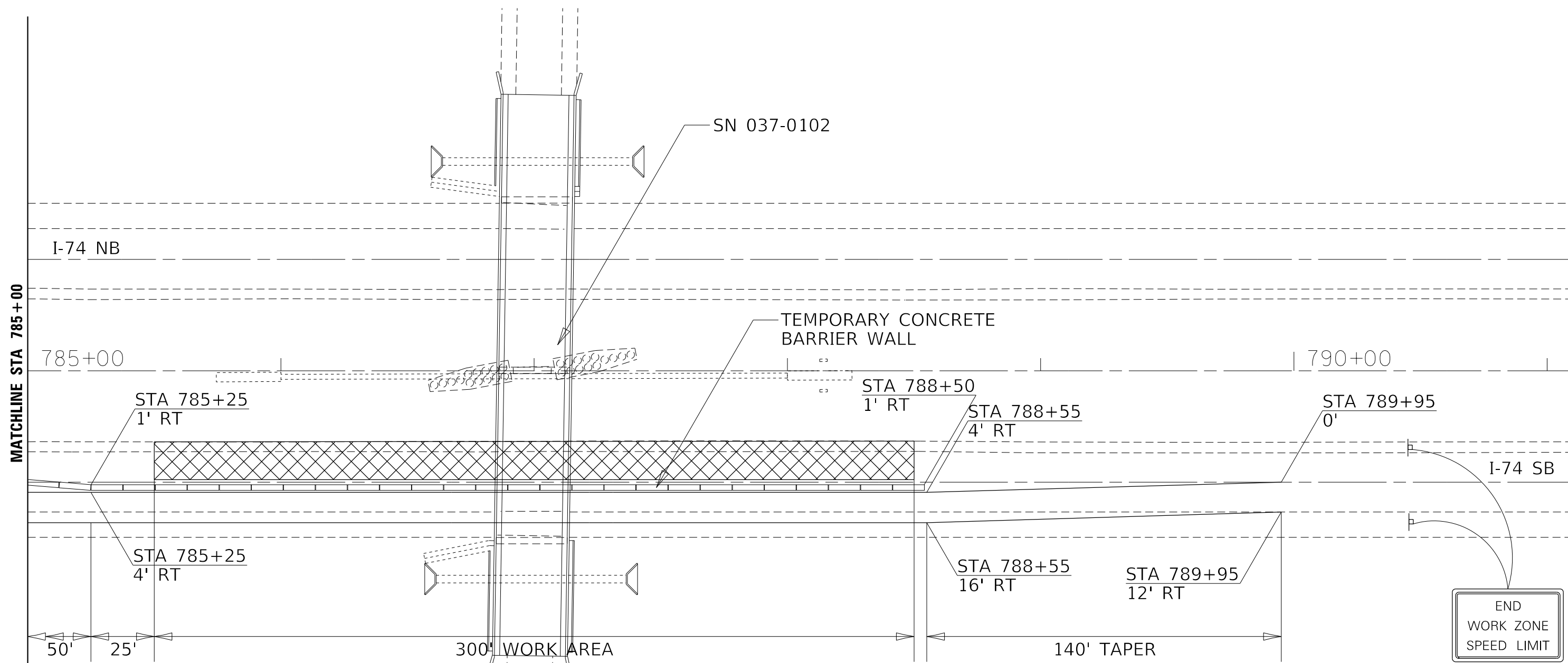
**TTRAFFIC CONTROL PLAN – STAGE III
FOR SN 037-0102**

SCALE: _____ SHEET _____ OF _____ SHEETS STA. _____ TO STA. _____

F.A.I. RTE.	SECTION	COUNTY	TOTAL SHEETS	SHEET NO.
74	(37-2HB)BP	HENRY	26	14
CONTRACT NO. 64N07				
ILLINOIS FED. AID PROJECT				



TRAFFIC CONTROL PLAN – STAGE III FOR SN 037-0102



SYMBOLS

- Arrow board
- Work area
- Sign
- Direction indicator barricade with steady burn monodirectional light
- Type II barricade or drum with steady burn monodirectional light
- Temporary concrete barrier
- Monodirectional barrier wall/guardrail marker
- Impact attenuator
- Drums with steady burning monodirectional light

NOTES

- ① Reflectorized temporary pavement marking shall be placed throughout the taper and along-side the work area. The edge line shall be white for right lane closure and yellow for left lane closures.
- ② Vertical panels at 7.6 m (25') centers with steady burning monodirectional lights.

MODEL: Default
 FILE: \\nas01\pwwork\pwwork\pwwork\Documents\DOT_Offices\Director\Projects\Operations\Bldg - Section\Henry\037-0102\64N07\CADD\02-traffic-control.dgn

USER NAME = drossdd	DESIGNED - _____	REVISED - _____
	DRAWN - _____	REVISED - _____
PLOT SCALE = 40,0000 ' / in.	CHECKED - _____	REVISED - _____
PLOT DATE = Oct-01-2018 02:47:48 PM	DATE - _____	REVISED - _____

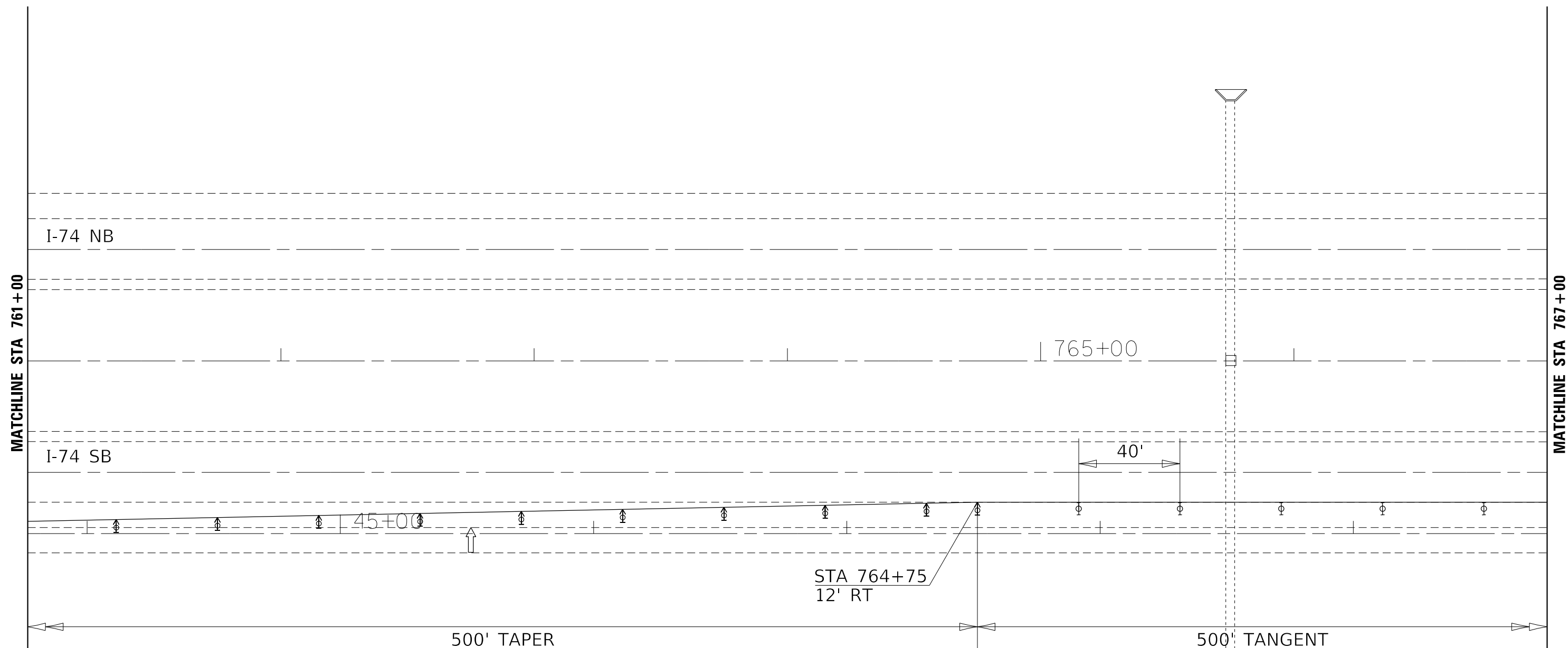
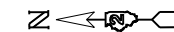
**STATE OF ILLINOIS
DEPARTMENT OF TRANSPORTATION**

TTRAFFIC CONTROL PLAN – STAGE III FOR SN 037-0102			
SCALE: _____	SHEET _____	OF _____ SHEETS	STA. _____ TO STA. _____

F.A.I. RTE.	SECTION	COUNTY	TOTAL SHEETS	SHEET NO.
74	(37-2HB)BP	HENRY	26	17
ILLINOIS FED. AID PROJECT			CONTRACT NO. 64N07	

G20-I103(0)-3660

TRAFFIC CONTROL PLAN – STAGE IV FOR SN 037-0102



SYMBOLS

- Arrow board
- Work area
- Sign
- Direction indicator barricade with steady burn monodirectional light
- Type II barricade or drum with steady burn monodirectional light
- Temporary concrete barrier
- Monodirectional barrier wall/guardrail marker
- Impact attenuator
- Drums with steady burning monodirectional light

NOTES

- ① Reflectorized temporary pavement marking shall be placed throughout the taper and along-side the work area. The edge line shall be white for right lane closure and yellow for left lane closures.
- ② Vertical panels at 7.6 m (25') centers with steady burning monodirectional lights.

MODEL: Default
 FILE: \\nas0101\BIBID\BIBID\TEC\Illinois\proj\037-0102\037-0102\CADD\02-traffic-control.dgn
 Project: 037-0102-02-traffic-control.dgn

USER NAME = dossed	DESIGNED - _____	REVISED - _____
	DRAWN - _____	REVISED - _____
PLOT SCALE = 40,0000 ' / in.	CHECKED - _____	REVISED - _____
PLOT DATE = Oct-01-2018 02:48:14 PM	DATE - _____	REVISED - _____

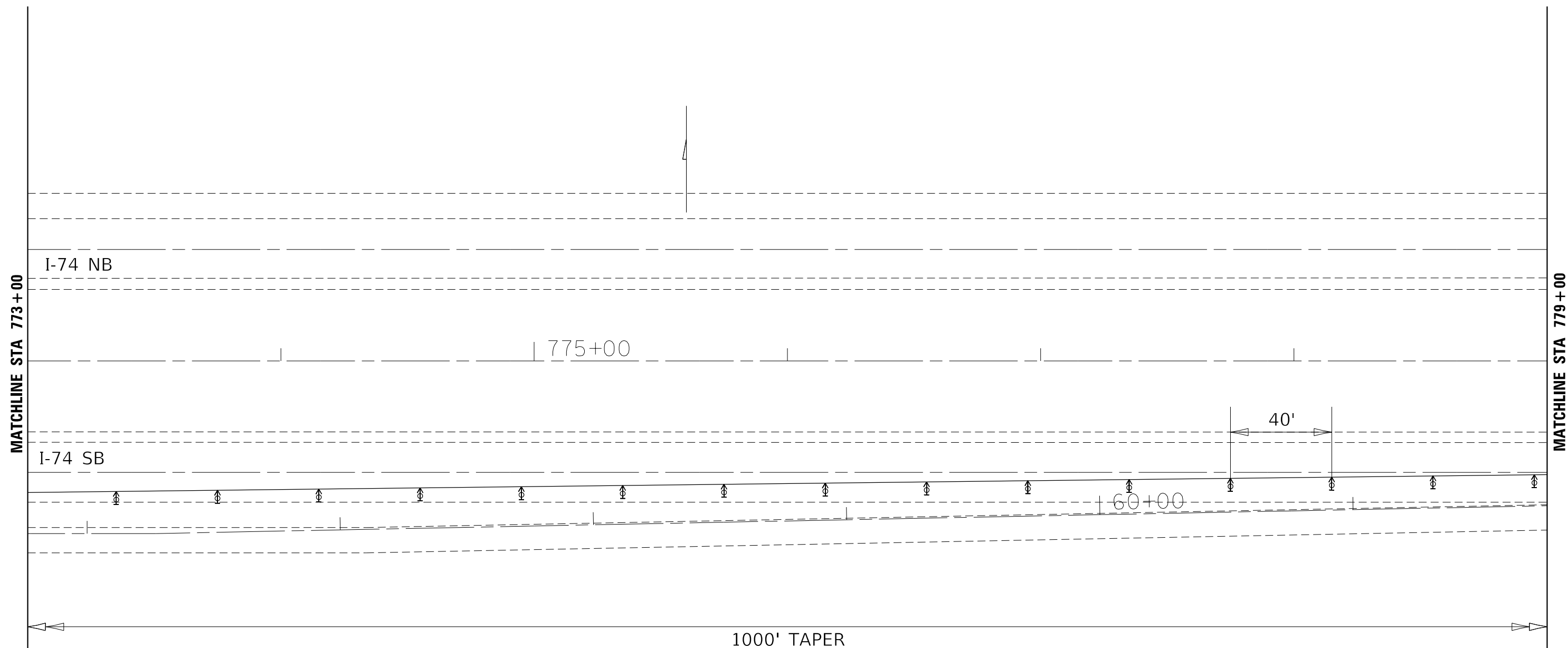
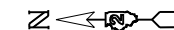
**STATE OF ILLINOIS
DEPARTMENT OF TRANSPORTATION**

**TTRAFFIC CONTROL PLAN – STAGE IV
FOR SN 037-0102**

SCALE: _____ SHEET _____ OF _____ SHEETS STA. _____ TO STA. _____

F.A.I. RTE.	SECTION	COUNTY	TOTAL SHEETS	SHEET NO.
74	(37-2HB)BP	HENRY	26	19
CONTRACT NO. 64N07				
ILLINOIS FED. AID PROJECT				

TRAFFIC CONTROL PLAN – STAGE IV FOR SN 037-0102



SYMBOLS

- Arrow board
- Work area
- Sign
- Direction indicator barricade with steady burn monodirectional light
- Type II barricade or drum with steady burn monodirectional light
- Temporary concrete barrier
- Monodirectional barrier wall/guardrail marker
- Impact attenuator
- Drums with steady burning monodirectional light

NOTES

- ① Reflectorized temporary pavement marking shall be placed throughout the taper and along-side the work area. The edge line shall be white for right lane closure and yellow for left lane closures.
- ② Vertical panels at 7.6 m (25') centers with steady burning monodirectional lights.

MODEL: Default
 FILE: \\nas0101\BIBID\ITC\Illinois\pwr\pwr\DOT\Documents\1001\DOT\Projects\Operations\Bldg_Section\Henry\037-0102\64N07\CADD\02-plt-cover.dgn

USER NAME = drossdd	DESIGNED - _____	REVISED - _____
	DRAWN - _____	REVISED - _____
PLOT SCALE = 40,0000 ' / in.	CHECKED - _____	REVISED - _____
PLOT DATE = Oct-01-2018 02:48:34 PM	DATE - _____	REVISED - _____

**STATE OF ILLINOIS
DEPARTMENT OF TRANSPORTATION**

**TTRAFFIC CONTROL PLAN – STAGE IV
FOR SN 037-0102**

SCALE: _____ SHEET ____ OF ____ SHEETS STA. _____ TO STA. _____

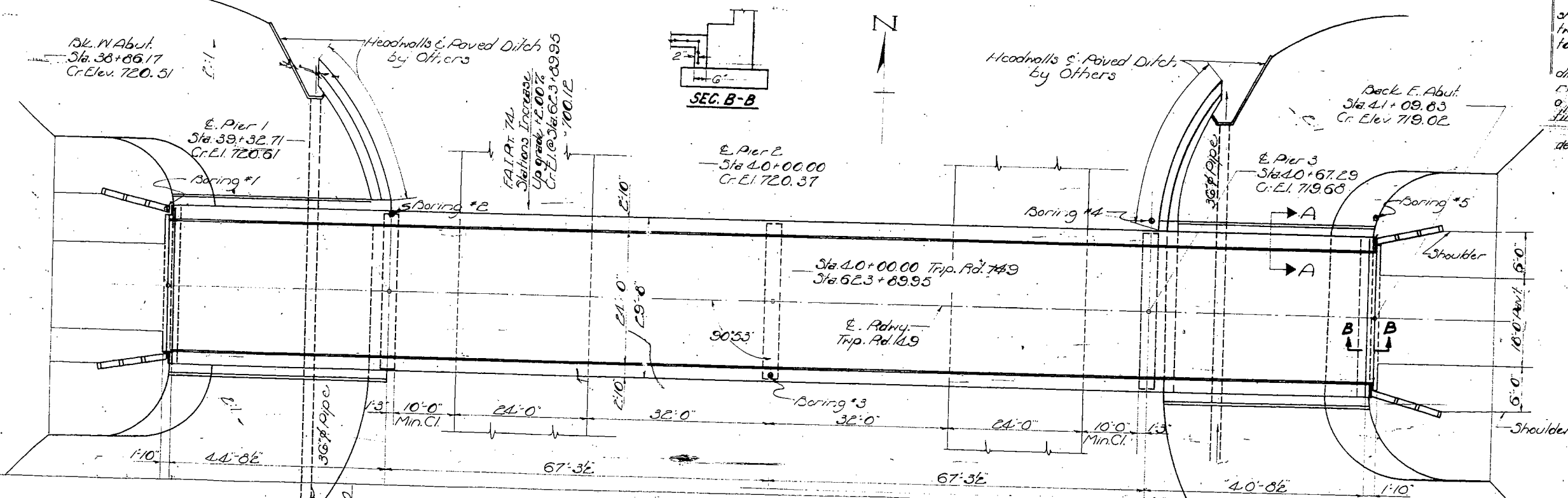
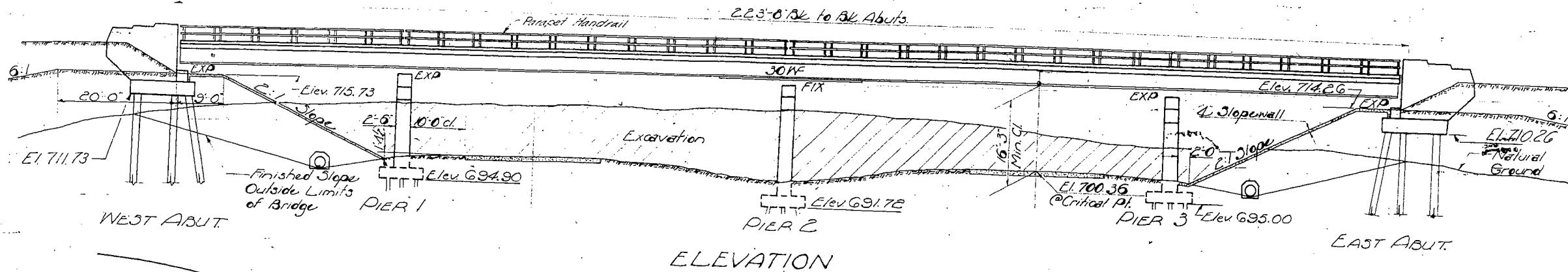
F.A.I. RTE.	SECTION	COUNTY	TOTAL SHEETS	SHEET NO.
74	(37-2HB)BP	HENRY	26	21
CONTRACT NO. 64N07				
ILLINOIS FED. AID PROJECT				

3M. #1. R.R. Spike in N. Face of high hedge apple stump
 4'00" W of Sta. 623+95., El. 707.51
 No Existing Structure.

STATE OF ILLINOIS
 DEPARTMENT OF PUBLIC WORKS & BUILDINGS
 DIVISION OF HIGHWAYS

PROJECT NO.	SECTION	COUNTY	TOTAL SHEETS	SHEET NO.
I. & L. 74	37-2HB	HENRY	30	7
FED. ROAD DIST. NO. 1	ILLINOIS	FED. AID PROJECT	I-74-2(40)14	

SHEET NO. 7
12 SHEETS



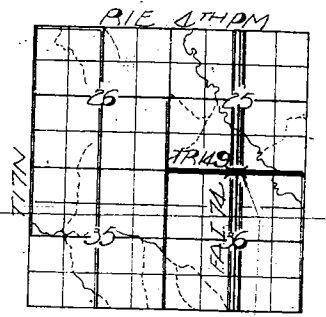
GENERAL NOTES

Class X Concrete shall be used throughout. The concrete floor slabs shall be finished in accordance with Article 5119 of the Standard Specifications. Slope wall shall be reinforced with welded wire fabric 6"x6" mesh; #2 wires, weighing 56# per 100 sq. ft. Rivets 2"φ, open holes 1 1/2"φ, unless noted.

All rockers, bolsters, bearing plates, lead plates, pintles, and anchor bolts shall be fabricated and set in accordance with Article 5115 of the Standard Specifications and are included in quantity of Structural Steel. Est'd. Weight = 6460 lbs. Anchor bolts shall be set before riveting diaphragms over supports.

Except as otherwise provided, all structural steel shall receive one shop coat of red lead paint and two field coats of aluminum paint. See Articles 56.1 to 56.5 inclusive, of the Standard Specifications. The Contractor shall drive two test piles as directed by the Engineer before ordering remainder of piles; one concrete test pile in a permanent location of the W. Abut. and one timber test pile near Pier 2.

All structural steel shall conform to A.S.T.M. designation A-36.



TOTAL BILL OF MATERIALS

Item	Unit	Super	Sub	Total
* Class A Exc. Struct	Cu. Yd		150	150
Structural Steel	Pound	159,980		159,980
Class X Concrete	Cu. Yd	187.9	184.2	372.1
Alum. Handrail	Lin. Ft.	443		443
Reinforcement Bars	Pound	38,362	13,260	51,622
Creosoted Piles	Lin. Ft.		1,620	1,620
Test Piles, Timber	Each		1	1
Concrete Piles	Lin. Ft.		680	680
Test Piles, Concrete	Each		1	1
Name Plates	Each		e	e
Pipe Culvert Type EA-36"	Lin. Ft.			152
Slope Wall	Sq. Yd.			380

STATION 623+89.95
 BUILT 196 B4
 STATE OF ILLINOIS
 FA.I. RT. 74 - SEC. 37-2HB
 FA. PROJ. I-74-2(40)14
 LOADING HS15
 NAME PLATE
 See Std. E113-1

DESIGN STRESSES

f_c = 14,000 psi Superstr.
 f_s = 20,000 psi Reinf.
 f_s = 20,000 psi Struct.
 v = 75 psi Flgs.
 n = 10
 LOADING HS15-S12-4.2

GENERAL PLAN & ELEVATION
 T.R. 149 OVER F.A.I. 74
 PROJECT I-74-2(40)14
 F.A.I. RT. 74 - SEC. 37-2HB
 HENRY COUNTY
 STA. 623+89.95

DESIGNED: *D. Atwell*
 CHECKED: *Joseph A. Lanni*
 DRAWN: *W.L. Jacobs*
 CHECKED: *W.L. Jacobs*

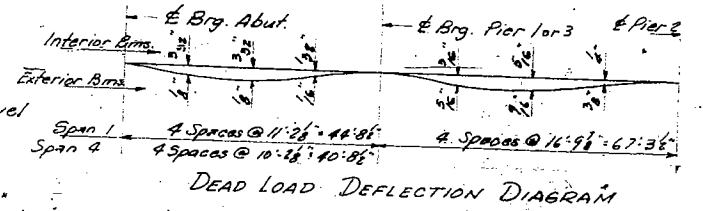
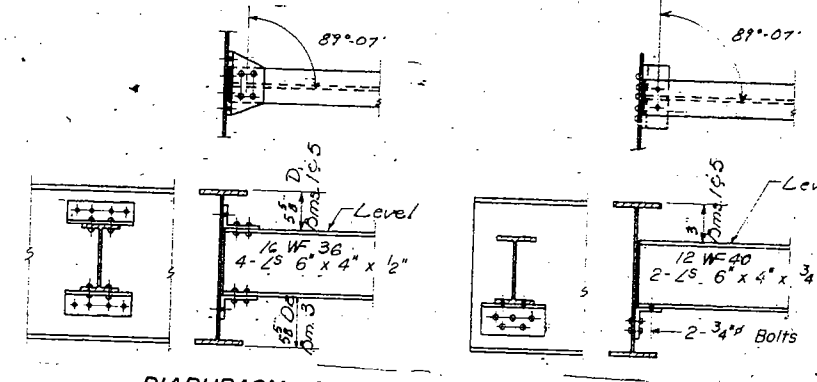
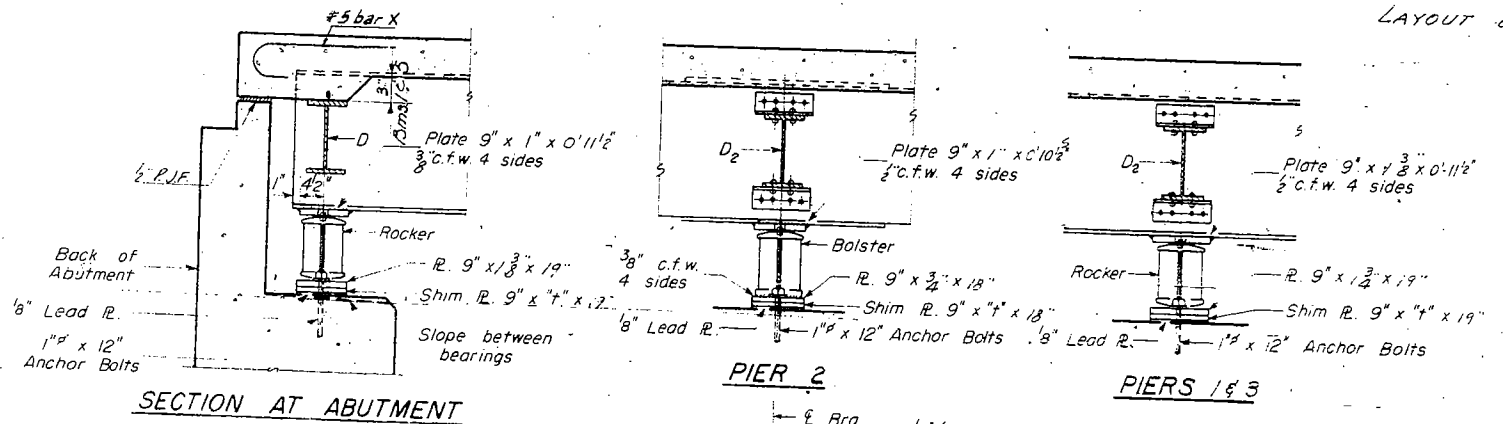
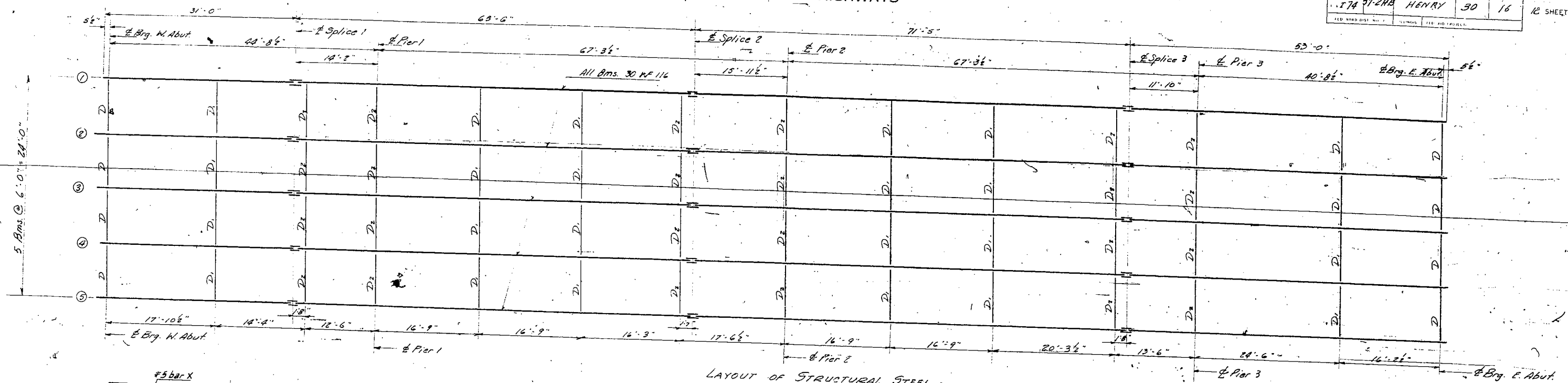
EXAMINED: *W.E. Baumann*
 PASSED: *E. J. Smith*
 APPROVED: *M. Bartholomew*

Aug 2 1961

GRADE PROFILE TWP. RD. 149

FOR INFORMATION ONLY

* Includes excavation for slope wall.
 Rev. 12/21/61. N.M.O. deleted quantities for emb and borrow. Changed Plate 19 & into type 20. f from 150 to 152 ft.



ELEVATION TOP OF BEAMS

Location	Bm. 1	Bm. 2	Bm. 3	Bm. 4	Bm. 5
W. Abut.	719.86	719.95	719.98	719.95	719.86
Splice 1	719.88	719.97	720.00	719.97	719.88
Pier 1	719.85	719.94	719.97	719.94	719.85
Splice 2	719.75	719.83	719.86	719.83	719.75
Pier 2	719.61	719.69	719.72	719.67	719.60
Splice 3	719.12	719.20	719.23	719.20	719.11
Pier 3	718.96	719.04	719.07	719.04	718.95
E. Abut.	718.40	718.48	718.51	718.48	718.39

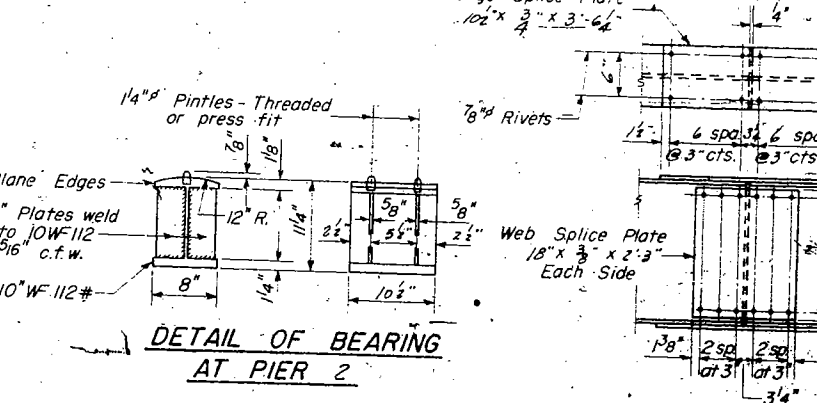
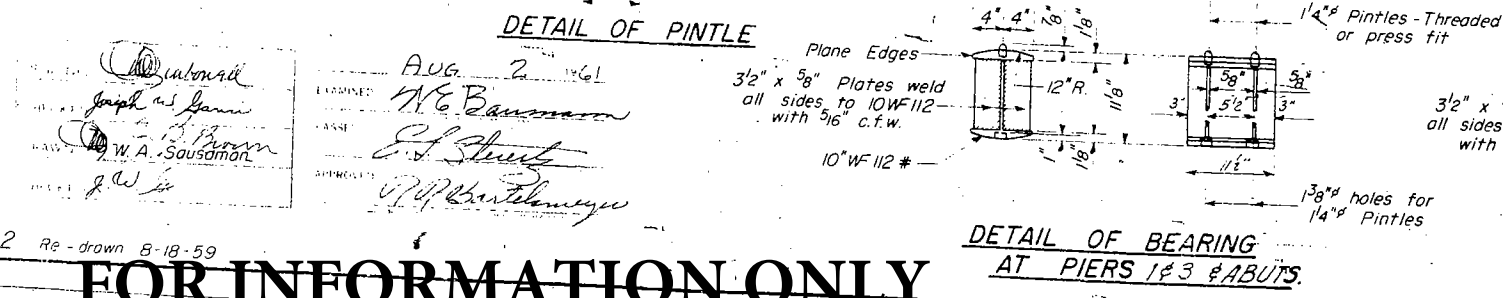
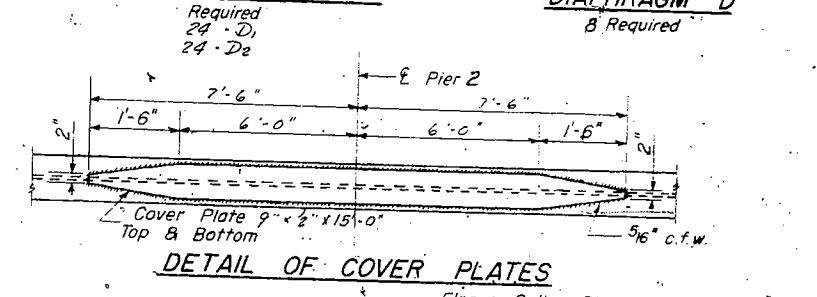
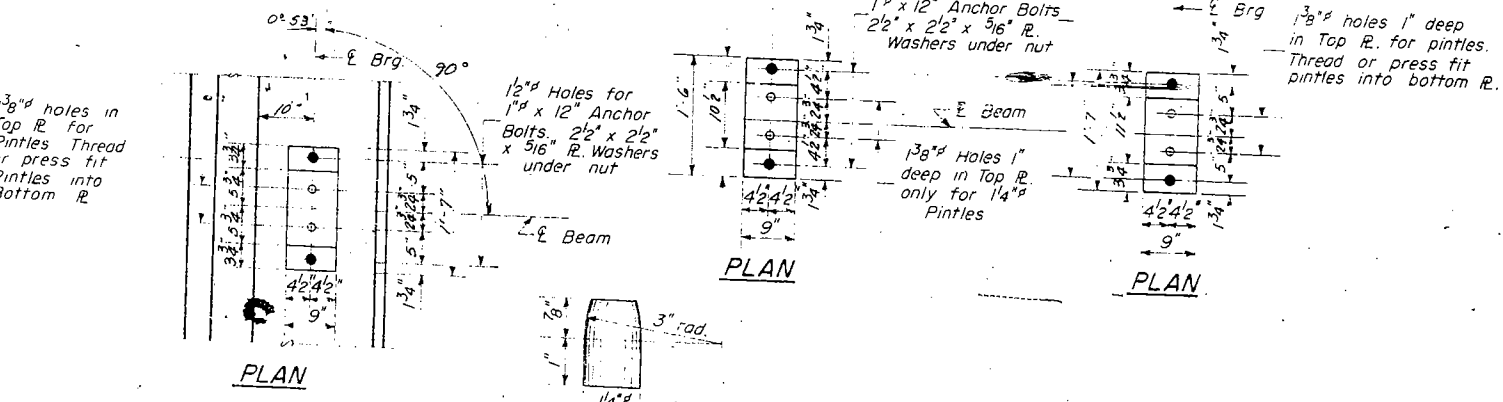


TABLE OF "T" DIMENSIONS

Location	Bm. 1	Bm. 2	Bm. 3	Bm. 4	Bm. 5
W. Abut.	0	0	3/8"	0	0
Pier 1	0	1/4"	3/8"	1/4"	0
Pier 2	0	0	3/8"	0	0
Pier 3	0	0	3/8"	0	0
E. Abut.	0	0	3/8"	0	0

LAYOUT & BEARING DETAILS
F.A.I. RT. 74 Sec. 37-2HB
HENRY COUNTY
STA. 623+89.95

APPROVED: *W. A. Sausaman*
DESIGNED: *W. E. Baumann*
CHECKED: *E. J. Shurt*
DATE: AUG 2 1961

I-2 Re-drawn 8-18-59

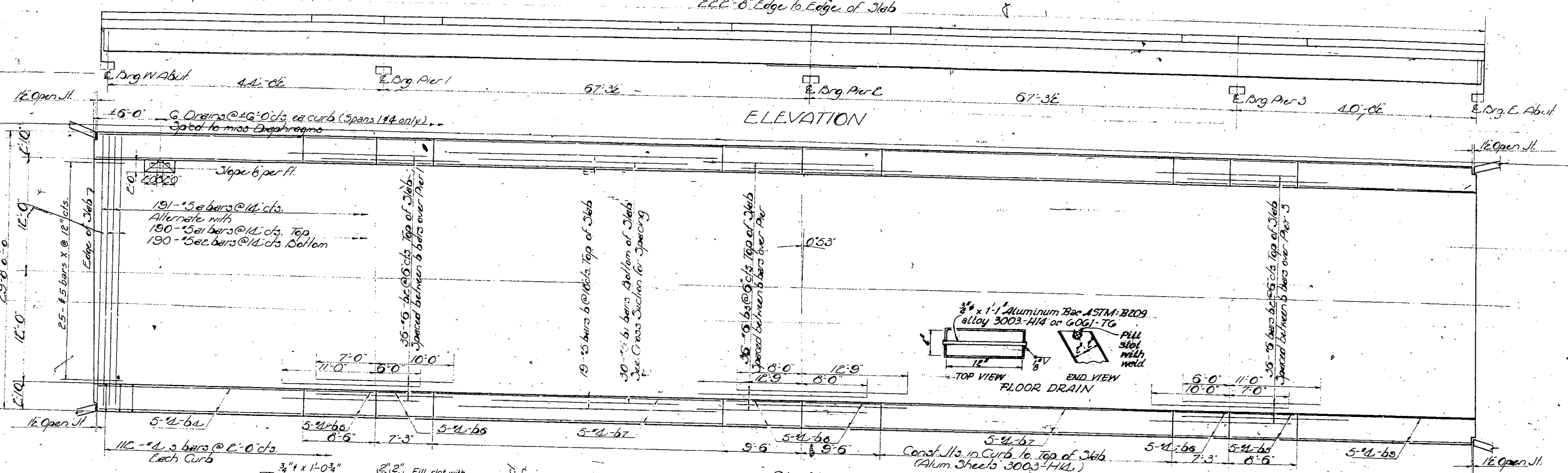
FOR INFORMATION ONLY

STATE OF ILLINOIS
DEPARTMENT OF PUBLIC WORKS & BUILDINGS
DIVISION OF HIGHWAYS

ROUTE NO.	SECTION	COUNTY	TOTAL SHEETS	SHEET NO.
111	21-218	HENRY	30	17
FED. ROAD DIST. NO. 7	ILLINOIS	FED. AID PROJECT		

SHEET NO. 2
12 SHEETS

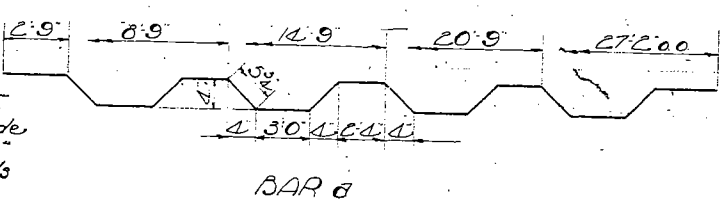
222'-0" Edge to Edge of Slab



PLAN

Method of Determining Filled Heights t
After all Structural Steel has been erected, elevations of the top flanges of the beams shall be taken at the stations shown on Sheet 3. These elevations subtracted from the "Theoretical Grade Elevations Adjusted for Dead Load Deflection" shown on Sheet 3, minus floor thickness equals the fillet heights above top of beams.

FILLET DETAIL

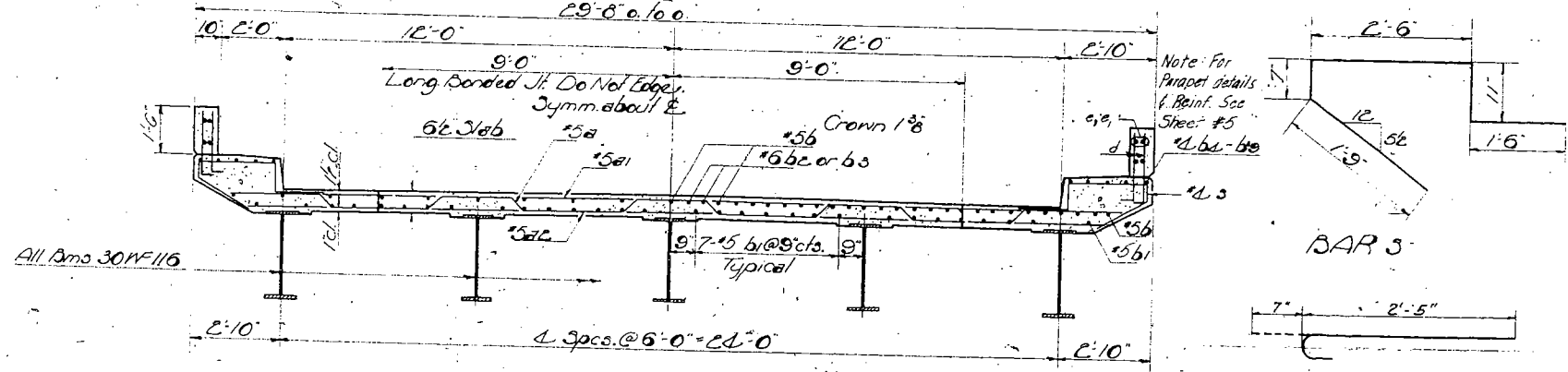
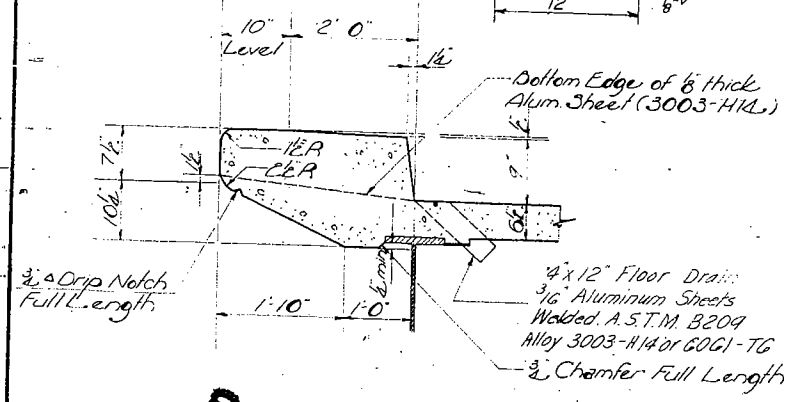


BILL OF MATERIALS

Bar No.	Size	Length	Shape
a	191	15	25'-4"
a1	190	15	27'-3"
a2	190	15	25'-9"
b	144	15	37'-9"
b1	270	15	25'-6"
b2	72	6	17'-0"
b3	36	6	20'-9"
b4	20	4	19'-3"
b5	20	4	8'-3"
b6	20	4	7'-0"
b7	40	4	25'-6"
b8	20	4	9'-3"
b9	20	4	17'-3"
d	1164	#5	2'-6"
s	224	4	7'-3"
x	50	#5	3'-0"

* Class X Concrete Cu. 4d - 187.9
* Reinforcement Bars Lbs. 38,960
* Structural Steel Lbs. 159980

* Parapet Handrail quantities included See Sh. #5



FOR INFORMATION ONLY

SUPERSTRUCTURE
F.A.I.R.T. 74 SEC. 37-2H13
HENRY COUNTY
STA. 623+69.95

DESIGNED	W. J. Subywell	EXAMINED	AUG 2 1961 H. E. Baumman ENGINEER OF BRIDGE AND TRAFFIC STRUCTURES
CHECKED	W. J. Subywell	PASSED	E. J. Street ENGINEER OF DESIGN
DRAWN	W. L. Jacobs	APPROVED	M. Bartelmeys CHIEF HIGHWAY ENGINEER
CHECKED	W. J. Subywell		

Rev. 12-16-54 - B.W. Added parapet handrail; lowered curb from 11" to 9"; Rev. drain & fillet details; Inc. 4" cur. from #4 to #5; Ch. X Conc. 176.0 to 187.4 Cu. Yds.; Brinf. Bars from 3450 to 38,960 lbs.