

INDEX OF SHEETS (SEE SHEET 2 )  
HIGHWAY STANDARDS (SEE SHEET 2 )

STATE OF ILLINOIS  
DEPARTMENT OF TRANSPORTATION

**PLANS FOR PROPOSED  
FEDERAL AID HIGHWAY**

FAU 3569 (BARRYPPOINT ROAD), BLOOMINGBANK ROAD TO FAIRBANK ROAD  
FAU 1472 (FOREST AVENUE), DES PLAINES RIVER BRIDGE TO LONGCOMMON ROAD  
HERRICK ROAD, LONGCOMMON ROAD TO N COWLEY ROAD  
RESURFACING  
SECTION No. 17-00085-00-RS  
PROJECT No. I12F(143)  
VILLAGE OF RIVERSIDE  
COOK COUNTY  
JOB No: C-91-150-18

F.A.U. RTE.	SECTION	COUNTY	TOTAL SHEETS	SHEET NO.
3569 1472	17-00085-00-RS	COOK	17	1
ILLINOIS CONTRACT NO. 61E90				



PRINTED BY AUTHORITY OF THE  
STATE OF ILLINOIS

STATE OF ILLINOIS  
DEPARTMENT OF TRANSPORTATION

APPROVED: *El Bailey* May 14 2018  
PUBLIC WORKS DIRECTOR, VILLAGE OF RIVERSIDE

PASSED: JUNE 19 2018  
*Christina Cristofari*  
DISTRICT ENGINEER OF LOCAL ROADS AND STREETS

RELEASING FOR  
BID BASED ON  
LIMITED REVIEW: JUNE 20 2018  
*Anthony Quigley*  
REGIONAL ENGINEER

ORION C. GALEY  
062-060829  
REGISTERED  
PROFESSIONAL  
ENGINEER  
OF  
ILLINOIS

May 10 2018  
*Orion C. Galey*  
ORION C. GALEY  
ILLINOIS REGISTRATION No. 062-060829  
EXPIRATION DATE: 11/30/2019

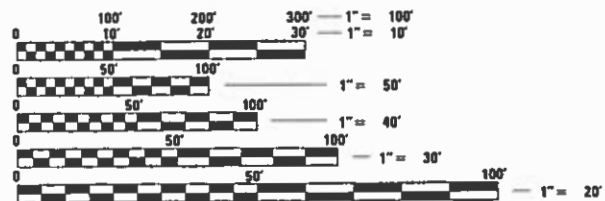
TRAFFIC DATA

BARRYPPOINT ROAD  
ADT (YEAR) = 2100 (2014)  
SPEED LIMIT = 25 MPH

DESIGN DESIGNATION: MINOR COLLECTOR (URBAN)

FOREST AVENUE  
ADT (YEAR) = 5650 (2014)  
SPEED LIMIT = 25 MPH

DESIGN DESIGNATION: MAJOR COLLECTOR (URBAN)

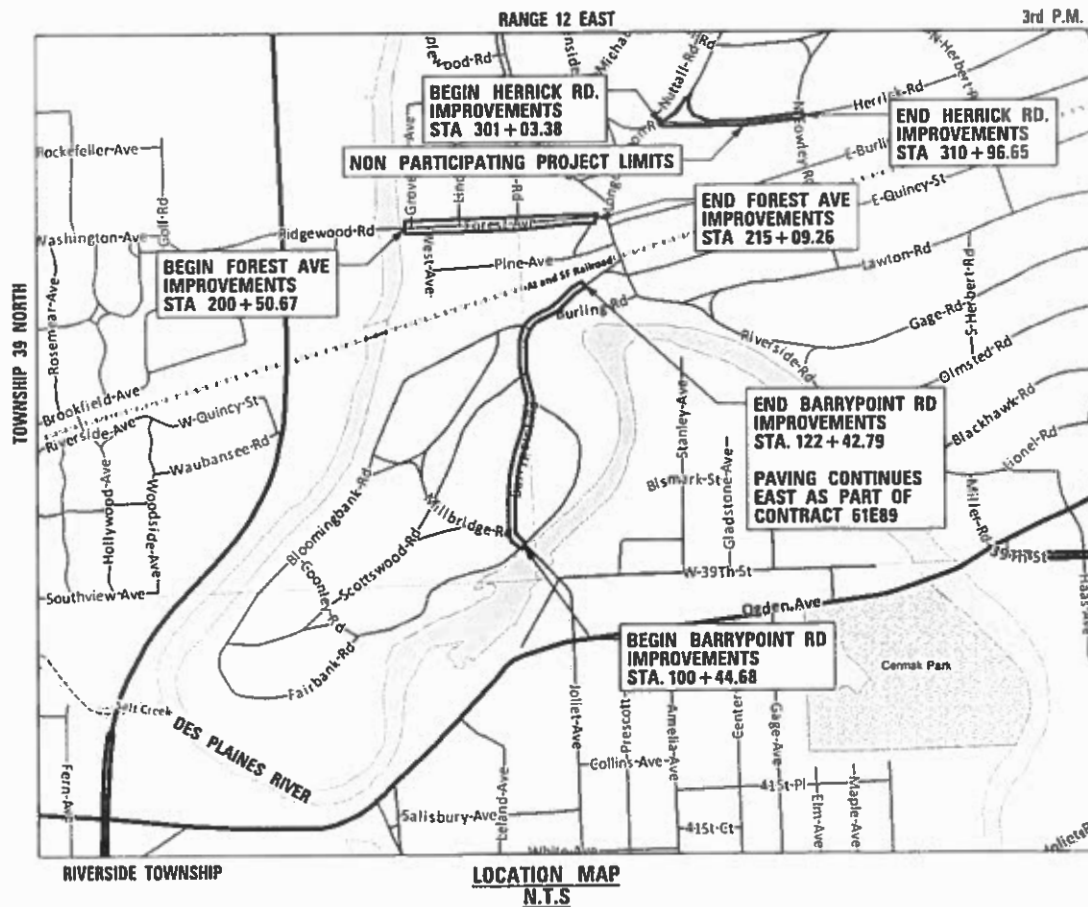


FULL SIZE PLANS HAVE BEEN PREPARED USING STANDARD  
ENGINEERING SCALES. REDUCED SIZED PLANS WILL NOT  
CONFORM TO STANDARD SCALES. IN MAKING MEASUREMENTS  
ON REDUCED PLANS, THE ABOVE SCALES MAY BE USED.

J.U.L.I.E.  
JOINT UTILITY LOCATION INFORMATION FOR EXCAVATION  
1-800-892-0123  
OR 811

**CB** CHRISTOPHER B. BURKE ENGINEERING, LTD.  
9575 W. Higgins Road, Suite 600  
Rosemont, Illinois 60018  
(847) 823-0500

PROFESSIONAL DESIGN FIRM NO. 184-001175  
EXPIRATION DATE: 04/30/19



<b>BARRYPPOINT ROAD</b>	GROSS LENGTH OF PROJECT = 2198 FEET (0.42 MILES)	} TOTAL LENGTH	GROSS LENGTH OF PROJECT = 4651 FEET (0.89 MILES)
	NET LENGTH OF PROJECT = 2198 FEET (0.42 MILES)		NET LENGTH OF PROJECT = 4651 FEET (0.89 MILES)
<b>FOREST AVENUE</b>	GROSS LENGTH OF PROJECT = 1459 FEET (0.28 MILES)		
	NET LENGTH OF PROJECT = 1459 FEET (0.28 MILES)		
<b>HERRICK ROAD</b>	GROSS LENGTH OF PROJECT = 994 FEET (0.19 MILES)		
	NET LENGTH OF PROJECT = 994 FEET (0.19 MILES)		

CONTRACT NO. 61E90

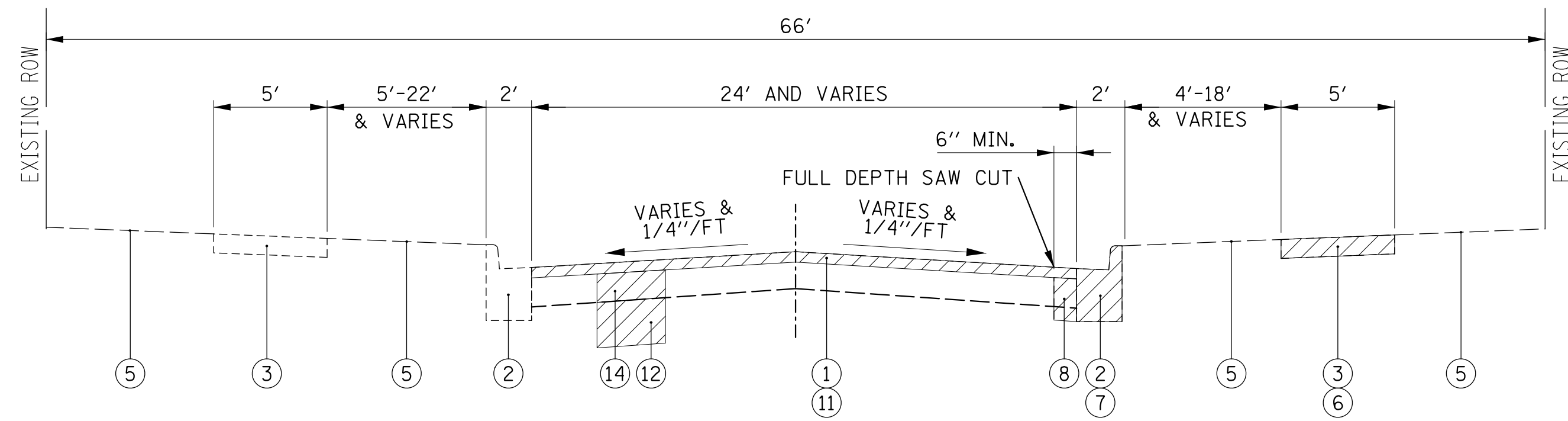
PROGRAM AND OFFICE ENGINEER: CHARLES F. RIDDLER, P.E. SCHAUMBURG, IL.



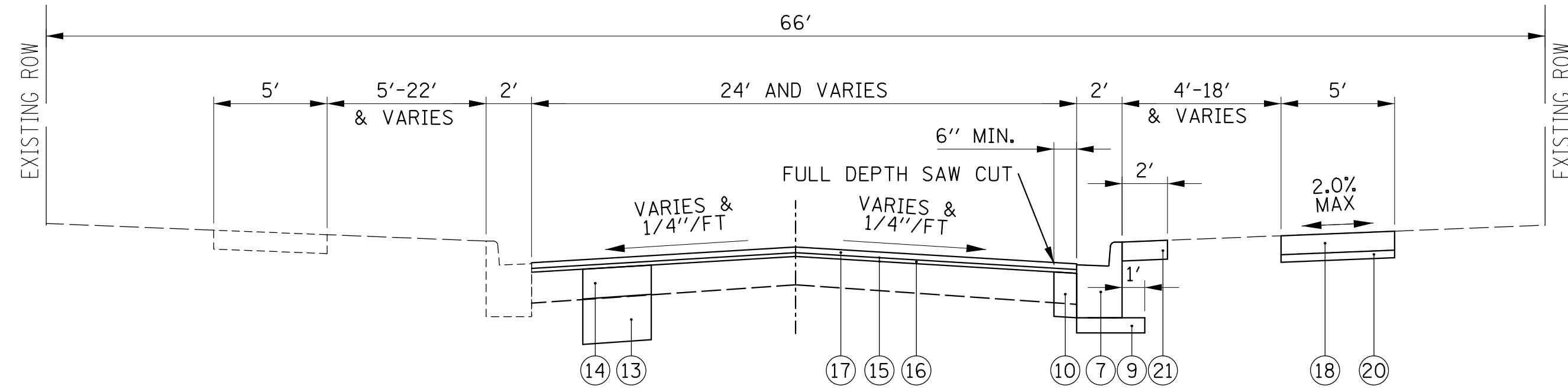
# SUMMARY OF QUANTITIES

CODE NO.	ITEM	UNIT	TOTAL QUANTITY	0005	0005	0005
				BARRYPPOINT ROAD 60% STATE 40% LOCAL	FOREST AVENUE 60% STATE 40% LOCAL	HERRICK ROAD 0% STATE 100% LOCAL
20201200	REMOVAL AND DISPOSAL OF UNSUITABLE MATERIAL	CU YD	80	29	25	26
25200200	SUPPLEMENTAL WATERING	UNIT	13	5	5	3
28000510	INLET FILTERS	EACH	51	24	14	13
30300112	AGGREGATE SUBGRADE IMPROVEMENT, 12"	SQ YD	237	87	74	76
40201000	AGGREGATE FOR TEMPORARY ACCESS	TON	200	90	66	44
40600290	BITUMINOUS MATERIALS (TACK COAT)	POUND	10456	4473	3956	2027
40600400	MIXTURE FOR CRACKS, JOINTS AND FLANGEWAYS	TON	31	17	9	5
40600625	LEVELING BINDER (MACHINE METHOD), N50	TON	930	408	345	177
40600982	HOT-MIX ASPHALT SURFACE REMOVAL - BUTT JOINT	SQ YD	262	114	93	55
40600985	PORTLAND CEMENT CONCRETE SURFACE REMOVAL - BUTT JOINT	SQ YD	12	12	0	0
40603335	HOT-MIX ASPHALT SURFACE COURSE, MIX "D", N50	TON	1394	612	517	265
* 42300200	PORTLAND CEMENT CONCRETE DRIVEWAY PAVEMENT, 6 INCH	SQ YD	179	50	40	89
42400200	PORTLAND CEMENT CONCRETE SIDEWALK 5 INCH	SQ FT	150	0	150	0
42400800	DETECTABLE WARNINGS	SQ FT	584	210	238	136
44000158	HOT MIX ASPHALT SURFACE REMOVAL, 2 1/4"	SQ YD	15488	6626	5860	3002
44000200	DRIVEWAY PAVEMENT REMOVAL	SQ YD	296	88	60	148
* 44000600	SIDEWALK REMOVAL	SQ FT	10075	3489	3359	3227
44201713	CLASS D PATCHES, TYPE I, 6 INCH	SQ YD	95	34	30	31
44201717	CLASS D PATCHES, TYPE II, 6 INCH	SQ YD	140	50	44	46
44201721	CLASS D PATCHES, TYPE III, 6 INCH	SQ YD	233	83	74	76
44201723	CLASS D PATCHES, TYPE IV, 6 INCH	SQ YD	1014	716	147	151
* 56500600	DOMESTIC WATER SERVICE BOX TO BE ADJUSTED	EACH	7	3	3	1
60200105	CATCH BASIN, TYPE A, 4' DIAMETER, TYPE 1 FRAME, OPEN LID	EACH	2	0	1	1
60206905	CATCH BASIN, TYPE C, TYPE 1 FRAME, OPEN LID	EACH	1	0	0	1
60300410	VALVE BOX FRAMES TO BE ADJUSTED WITH NEW FRAMES	EACH	2	0	1	1
60403700	LIDS, TYPE 1, OPEN LID	EACH	3	1	2	0
60406000	FRAMES AND LIDS, TYPE 1, OPEN LID	EACH	8	4	2	2
60406100	FRAMES AND LIDS, TYPE 1, CLOSED LID	EACH	17	6	6	5
60600605	CONCRETE CURB, TYPE B	FOOT	324	109	95	120
* INDICATES A SPECIAL PROVISION						
X SPECIALTY ITEM						

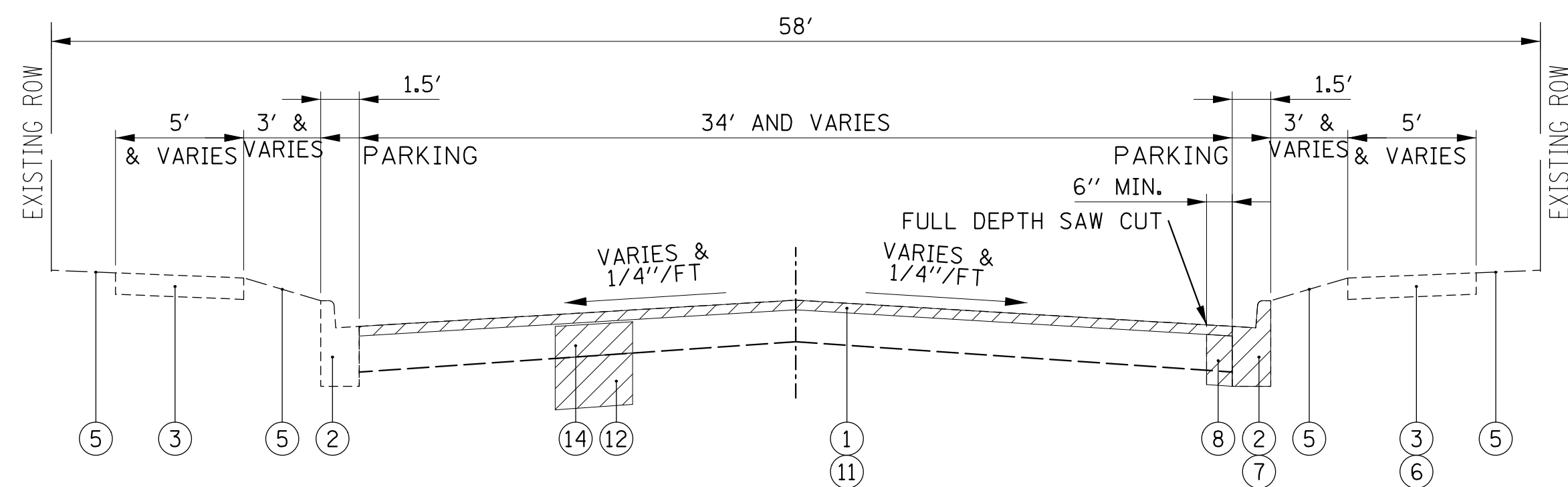
CODE NO.	ITEM	UNIT	TOTAL QUANTITY	0005	0005	0005
				BARRYPPOINT ROAD 60% STATE 40% LOCAL	FOREST AVENUE 60% STATE 40% LOCAL	HERRICK ROAD 0% STATE 100% LOCAL
67100100	MOBILIZATION	L SUM	1	0.4	0.4	0.2
70102620	TRAFFIC CONTROL AND PROTECTION STANDARD 701501	L SUM	1	0.4	0.4	0.2
70102635	TRAFFIC CONTROL AND PROTECTION STANDARD 701701	L SUM	1	0.4	0.4	0.2
70102640	TRAFFIC CONTROL AND PROTECTION STANDARD 701801	L SUM	1	0.4	0.4	0.2
70300100	SHORT TERM PAVEMENT MARKING	FOOT	753	326	383	44
70300150	SHORT TERM PAVEMENT MARKING REMOVAL	SQ FT	252	109	128	15
72400500	RELOCATE SIGN PANEL ASSEMBLY - TYPE A	EACH	2	1	1	0
X 78000100	THERMOPLASTIC PAVEMENT MARKING - LETTERS AND SYMBOLS	SQ FT	41	0	41	0
X 78000200	THERMOPLASTIC PAVEMENT MARKING - LINE 4"	FOOT	1461	430	1031	0
X 78000400	THERMOPLASTIC PAVEMENT MARKING - LINE 6"	FOOT	1616	653	728	235
X 78000600	THERMOPLASTIC PAVEMENT MARKING - LINE 12"	FOOT	847	0	557	290
X 78000650	THERMOPLASTIC PAVEMENT MARKING - LINE 24"	FOOT	295	163	88	44
* X0326862	STRUCTURES TO BE ADJUSTED	EACH	21	6	11	4
* X2520700	SODDING, SPECIAL	SQ YD	687	144	330	213
* X6022810	MANHOLES, SANITARY, 4'-DIAMETER, TYPE 1 FRAME, CLOSED LID	EACH	4	1	2	1
* X6030310	FRAMES AND LIDS TO BE ADJUSTED (SPECIAL)	EACH	55	21	19	15
* Z0017800	DRAINAGE & UTILITY STRUCTURES TO BE RECONSTRUCTED (SPECIAL)	EACH	7	2	3	2
* Z0018700	DRAINAGE STRUCTURE TO BE REMOVED	EACH	9	1	3	5
* Z0030850	TEMPORARY INFORMATION SIGNING	SQ FT	130	52	78	0
* Z0038122	PORTLAND CEMENT CONCRETE SURFACE REMOVAL 2 1/4"	SQ YD	311	311	0	0
* Z0004518	HOT-MIX ASPHALT DRIVEWAY PAVEMENT, 5"	SQ YD	51	20	20	11
* XX000406	BRICK PAVER REMOVAL AND REPLACEMENT	SQ FT	40	20	20	0
* XX001109	PORTLAND CEMENT CONCRETE ALLEY PAVEMENT, 8"	SQ YD	61	0	18	43
* XX005701	ALLEY APRON APPROACH PAVEMENT REMOVAL	SQ YD	77	0	34	43
X * XX008910	PAVEMENT MARKING (SPECIAL)	SQ FT	316	0	316	0
* XX009049	REMOVE AND REPLACE CURB AND GUTTER (SPECIAL)	FOOT	2246	591	634	1021
* XX009155	SPECIAL EXCAVATION FOR ADA RAMPS	CU YD	67	28	24	15
* XX024100	EXPOSED AGGREGATE SURFACE	SQ FT	10768	3951	3545	3272
* INDICATES A SPECIAL PROVISION						
X SPECIALTY ITEM						



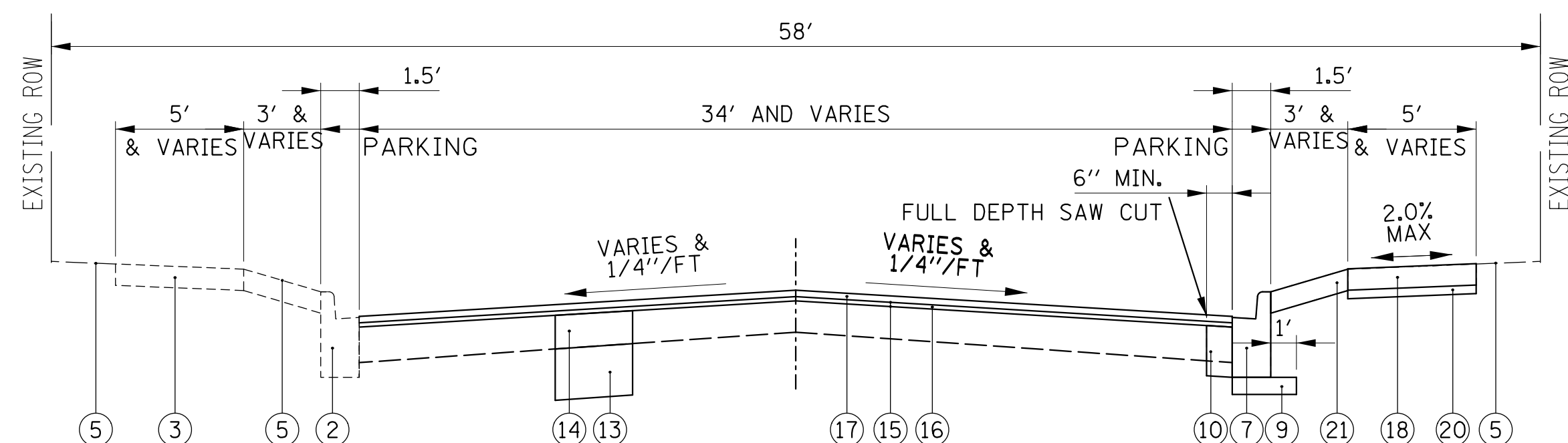
EXISTING TYPICAL SECTION  
 STA 100+44.68 TO STA 122+42.79 (CURB: B-6.18), BARRYPOINT ROAD  
 STA 301+03.38 TO STA 310+96.65 (CURB: M-6.18), HERRICK ROAD



PROPOSED TYPICAL SECTION  
 STA 100+44.68 TO STA 122+42.79 (CURB: B-6.18), BARRYPOINT ROAD  
 STA 301+03.38 TO STA 310+96.65 (CURB: M-6.18), HERRICK ROAD



EXISTING TYPICAL SECTION  
 STA 200+50.67 TO STA 215+09.26 (CURB: B-6.12), FOREST AVENUE



PROPOSED TYPICAL SECTION  
 STA 200+50.67 TO STA 215+09.26 (CURB: B-6.12), FOREST AVENUE

LEGEND

ITEMS TO BE REMOVED

- ① EXISTING HMA BINDER AND SURFACE COURSE
- ② EXISTING COMBINATION CONCRETE CURB AND GUTTER
- ③ EXISTING EXPOSED AGGREGATE SIDEWALK
- ④ EXISTING PORTLAND CEMENT CONCRETE SIDEWALK
- ⑤ EXISTING SOIL AND GROUND COVER
- ⑥ SIDEWALK REMOVAL (AS DIRECTED BY THE ENGINEER IN THE FIELD)
- ⑦ REMOVE AND REPLACE CURB AND GUTTER (SPECIAL) (AS DIRECTED BY THE ENGINEER IN THE FIELD)
- ⑧ EXISTING PAVEMENT REMOVAL (INCLUDED IN THE COST OF REMOVE AND REPLACE CURB AND GUTTER (SPECIAL))
- ⑨ SUBBASE GRANULAR MATERIAL, TYPE B, 4" (INCLUDED IN THE COST OF REMOVE AND REPLACE CURB AND GUTTER (SPECIAL))
- ⑩ P.C.C. BASE COURSE (INCLUDED IN THE COST OF REMOVE AND REPLACE CURB AND GUTTER (SPECIAL))
- ⑪ HOT MIX ASPHALT SURFACE REMOVAL, (2 1/4")
- ⑫ REMOVAL AND DISPOSAL OF UNSUITABLE MATERIALS (AS DIRECTED BY THE ENGINEER IN THE FIELD)
- ⑬ AGGREGATE SUBGRADE IMPROVEMENT, 12" (AS DIRECTED BY THE ENGINEER IN THE FIELD)
- ⑭ CLASS D PATCHES, VARIOUS TYPES, 6 INCH (AS DIRECTED BY THE ENGINEER IN THE FIELD)
- ⑮ BITUMINOUS MATERIALS (TACK COAT)
- ⑯ LEVELING BINDER (MACHINE METHOD), N50 (1" MIN.)
- ⑰ HMA SURFACE COURSE, MIX "D", N50 - 1.5"
- ⑱ EXPOSED AGGREGATE SURFACE (AS DIRECTED BY THE ENGINEER IN THE FIELD)
- ⑲ PORTLAND CEMENT CONCRETE SIDEWALK, 5" (AS DIRECTED BY THE ENGINEER IN THE FIELD)
- ⑳ 2" AGGREGATE BASE COURSE (INCLUDED IN THE COST OF PORTLAND CEMENT CONCRETE SIDEWALK, 5" AND EXPOSED AGGREGATE SURFACE)
- ㉑ SODDING, (SPECIAL)

NOTE: DRIVEWAY PAVEMENT REMOVAL AND ALLEY APRON APPROACH PAVEMENT REMOVAL SHALL OCCUR IF THE ADJACENT CURB AND GUTTER IS TO BE REMOVED. ALL LIMITS SHALL BE DETERMINED BY THE ENGINEER IN THE FIELD

HOT-MIX ASPHALT MIXTURE REQUIREMENTS	
MIXTURE ITEM	AIR VOIDS @ Ndes
PAVEMENT RESURFACING	
HOT-MIX ASPHALT SURFACE COURSE, MIX "D", N50 (IL 9.5mm); 1.5"	4% @ 50 GYR
LEVELING BINDER (MACHINE METHOD), N50; 1" (IL 9.5mm)	4% @ 50 GYR
PATCHING	
CLASS D PATCHES (HMA BINDER IL-19mm); 6" (IN 2 LIFTS)	4% @ 70 GYR
HOT-MIX ASPHALT DRIVEWAY PAVEMENT, 5"	
HOT-MIX ASPHALT SURFACE COURSE, MIX "D", N50 (IL 9.5mm); 2"	4% @ 50 GYR
HOT-MIX ASPHALT BASE COURSE (HMA BINDER IL-19 mm); 3"	4% @ 50 GYR

NOTES:  
 THE UNIT WEIGHT USED TO CALCULATE ALL HMA MIXTURE QUANTITIES IS 112 LBS/SQ YD/IN.  
 THE "AC TYPE" FOR POLYMERIZED HMA MIXES SHALL BE "SBS/SBR PG 76-22" AND FOR NON-POLYMERIZED HMA THE "AC TYPE" SHALL BE "PG 64-22" UNLESS MODIFIED BY DISTRICT ONE SPECIAL PROVISIONS.

FOR HMA FULL DEPTH "AC TYPE" SEE SPECIAL PROVISIONS.  
 FOR USE OF RECYCLED MATERIALS SEE SPECIAL PROVISIONS

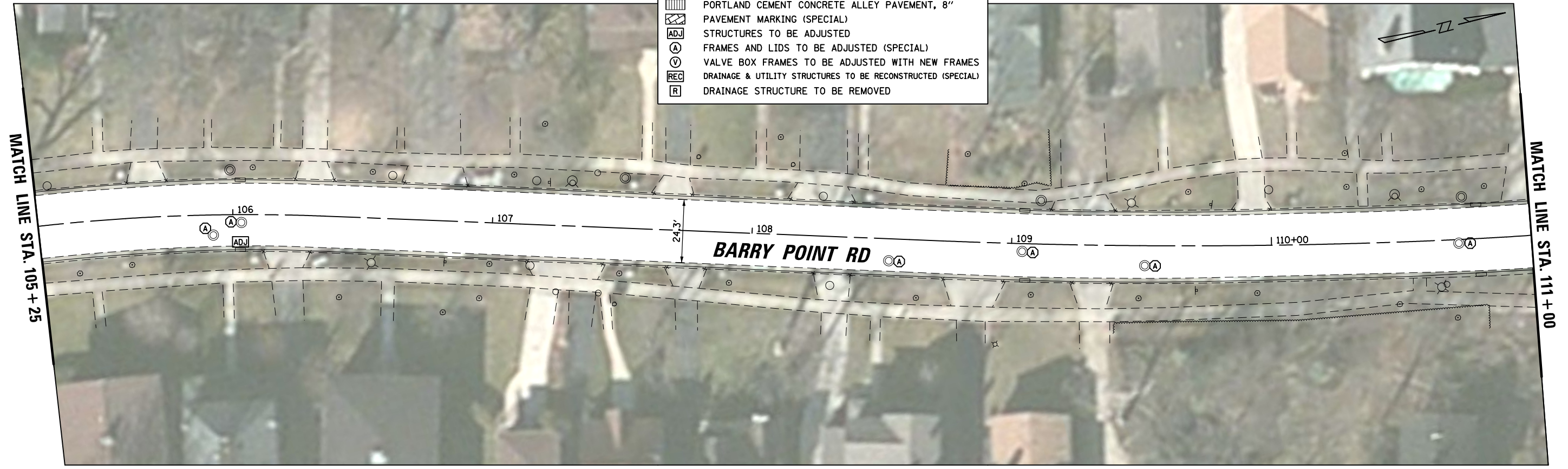
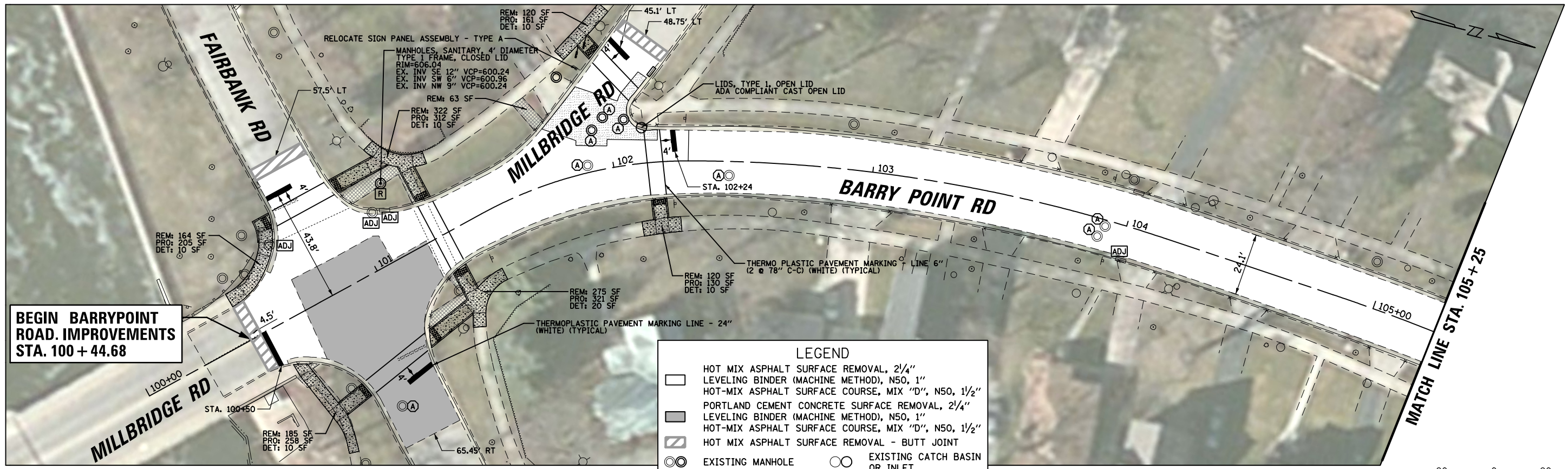
FILE NAME =	USER NAME = dschroeder	DESIGNED - DJS	REVISED -
N:\RIVERSIDE\120544.00083\C1v1\TYP.12054400083.sht		DRAWN - DJS	REVISED -
Default	PLOT SCALE = 20'	CHECKED - OCG	REVISED -
	PLOT DATE = 5/30/2018	DATE - 5/30/2018	REVISED -

STATE OF ILLINOIS  
 DEPARTMENT OF TRANSPORTATION

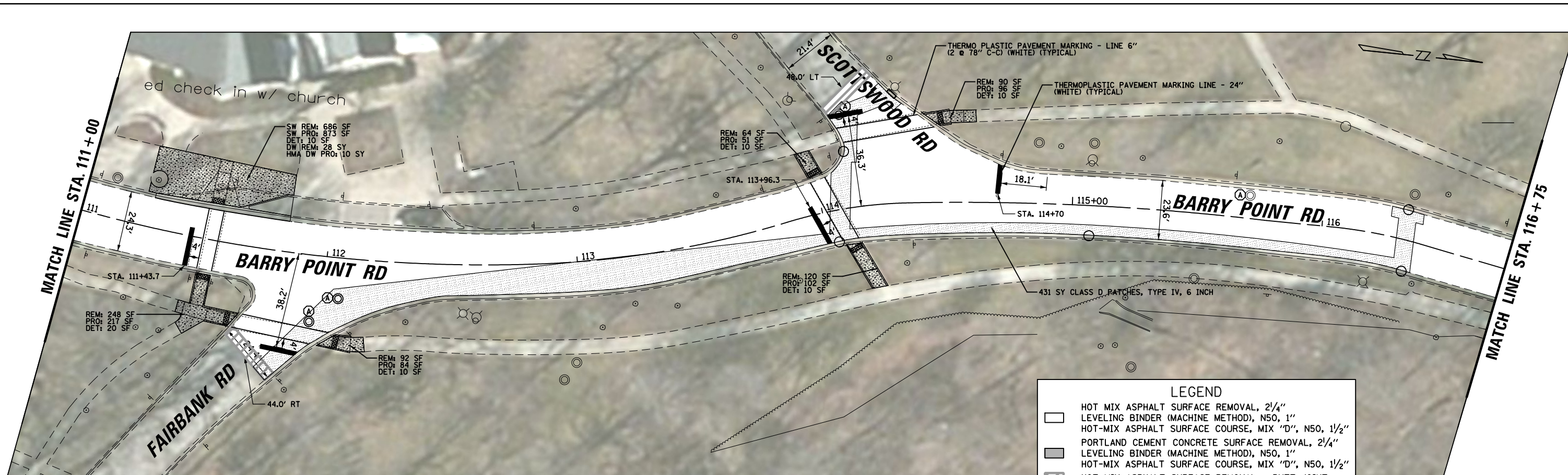
TYPICAL SECTIONS  
 BARRYPOINT ROAD, FOREST AVENUE, AND HERRICK ROAD

SCALE: \$SCALE\$ SHEET 1 OF 1 SHEETS STA. TO STA.

F.A.U. RTE.	SECTION	COUNTY	TOTAL SHEETS	SHEET NO.
3569	17-00085-00-RS	COOK	17	4
1472				
CONTRACT NO. 61E90				
ILLINOIS FED. AID PROJECT				

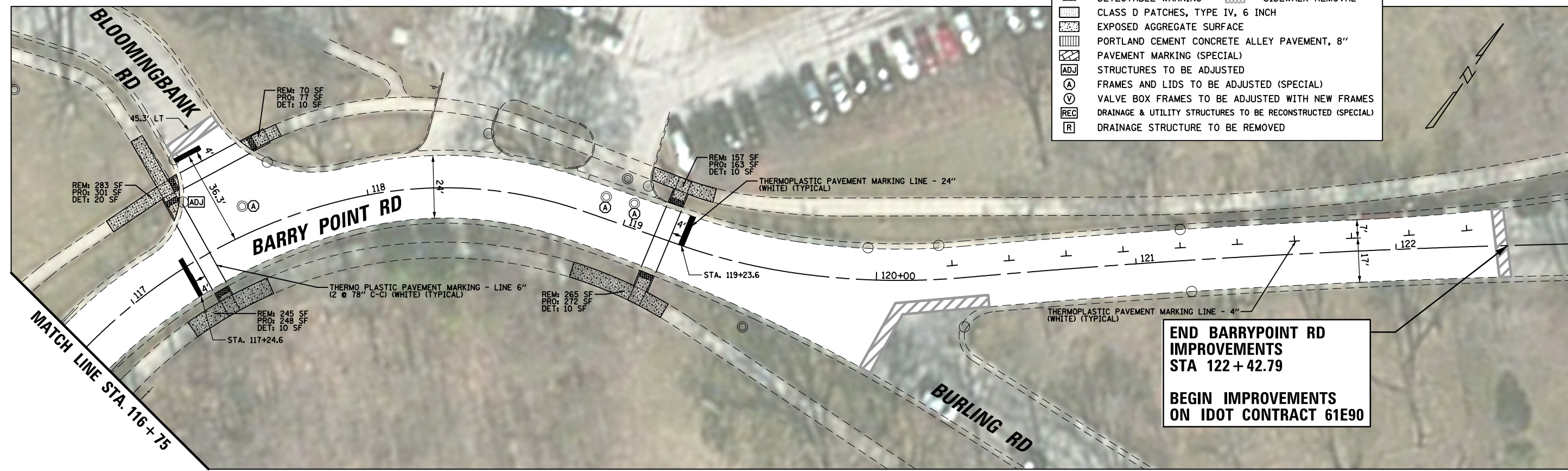
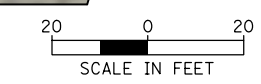


FILE NAME =	USER NAME = dschroeder	DESIGNED - DJS	REVISED -	<b>STATE OF ILLINOIS DEPARTMENT OF TRANSPORTATION</b>	<b>ROADWAY PLAN BARRYPPOINT ROAD, FOREST AVENUE, AND HERRICK ROAD</b>	F.A.U. RTE.	SECTION	COUNTY	TOTAL SHEETS	SHEET NO.	
N:\RIVERSIDE\120544.00083\Civil\PLN1_Barrypoint_12054400083.dgn		DRAWN - DJS	REVISED -			3569	17-00085-00-R5	COOK	17	5	
Default	PLOT SCALE = 48"	CHECKED - OCG	REVISED -			CONTRACT NO. 61E90					
	PLOT DATE = 5/9/2018	DATE - 5/9/2018	REVISED -			ILLINOIS FED. AID PROJECT					



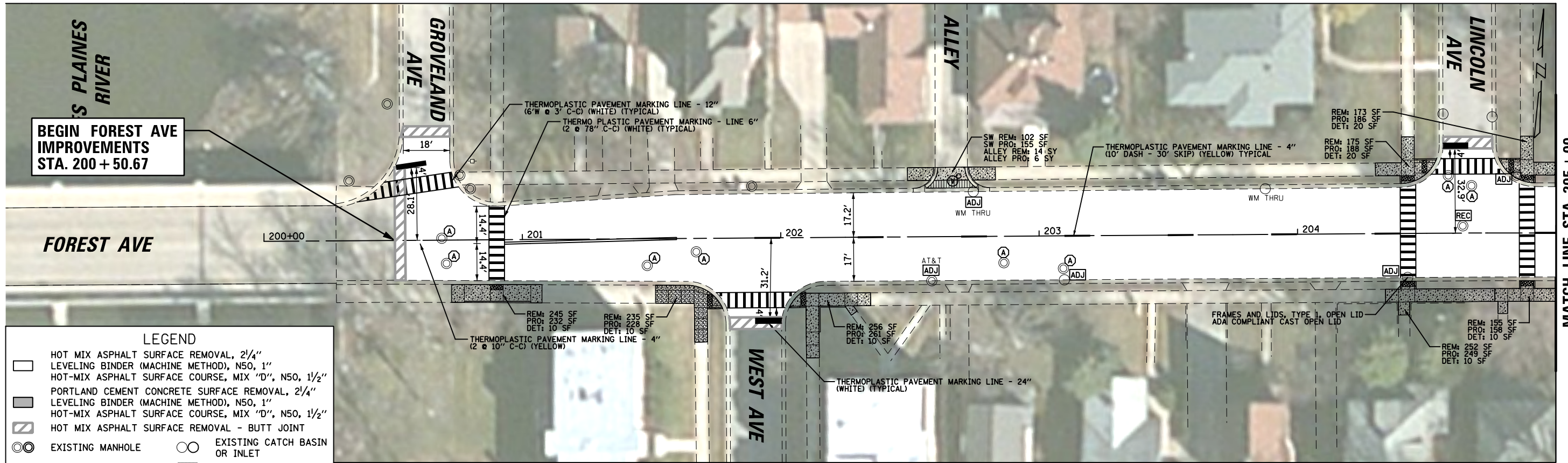
**LEGEND**

	HOT MIX ASPHALT SURFACE REMOVAL, 2 1/4"		EXISTING MANHOLE
	LEVELING BINDER (MACHINE METHOD), N50, 1"		EXISTING CATCH BASIN OR INLET
	HOT-MIX ASPHALT SURFACE COURSE, MIX "D", N50, 1 1/2"		DETECTABLE WARNING
	PORTLAND CEMENT CONCRETE SURFACE REMOVAL, 2 1/4"		SIDEWALK REMOVAL
	LEVELING BINDER (MACHINE METHOD), N50, 1"		CLASS D PATCHES, TYPE IV, 6 INCH
	HOT-MIX ASPHALT SURFACE COURSE, MIX "D", N50, 1 1/2"		EXPOSED AGGREGATE SURFACE
	HOT MIX ASPHALT SURFACE REMOVAL - BUTT JOINT		PORTLAND CEMENT CONCRETE ALLEY PAVEMENT, 8"
	EXISTING MANHOLE		PAVEMENT MARKING (SPECIAL)
	EXISTING CATCH BASIN OR INLET		STRUCTURES TO BE ADJUSTED
	DETECTABLE WARNING		FRAMES AND LIDS TO BE ADJUSTED (SPECIAL)
	CLASS D PATCHES, TYPE IV, 6 INCH		VALVE BOX FRAMES TO BE ADJUSTED WITH NEW FRAMES
	EXPOSED AGGREGATE SURFACE		DRAINAGE & UTILITY STRUCTURES TO BE RECONSTRUCTED (SPECIAL)
	PORTLAND CEMENT CONCRETE ALLEY PAVEMENT, 8"		DRAINAGE STRUCTURE TO BE REMOVED
	PAVEMENT MARKING (SPECIAL)		
	STRUCTURES TO BE ADJUSTED		
	FRAMES AND LIDS TO BE ADJUSTED (SPECIAL)		
	VALVE BOX FRAMES TO BE ADJUSTED WITH NEW FRAMES		
	DRAINAGE & UTILITY STRUCTURES TO BE RECONSTRUCTED (SPECIAL)		
	DRAINAGE STRUCTURE TO BE REMOVED		



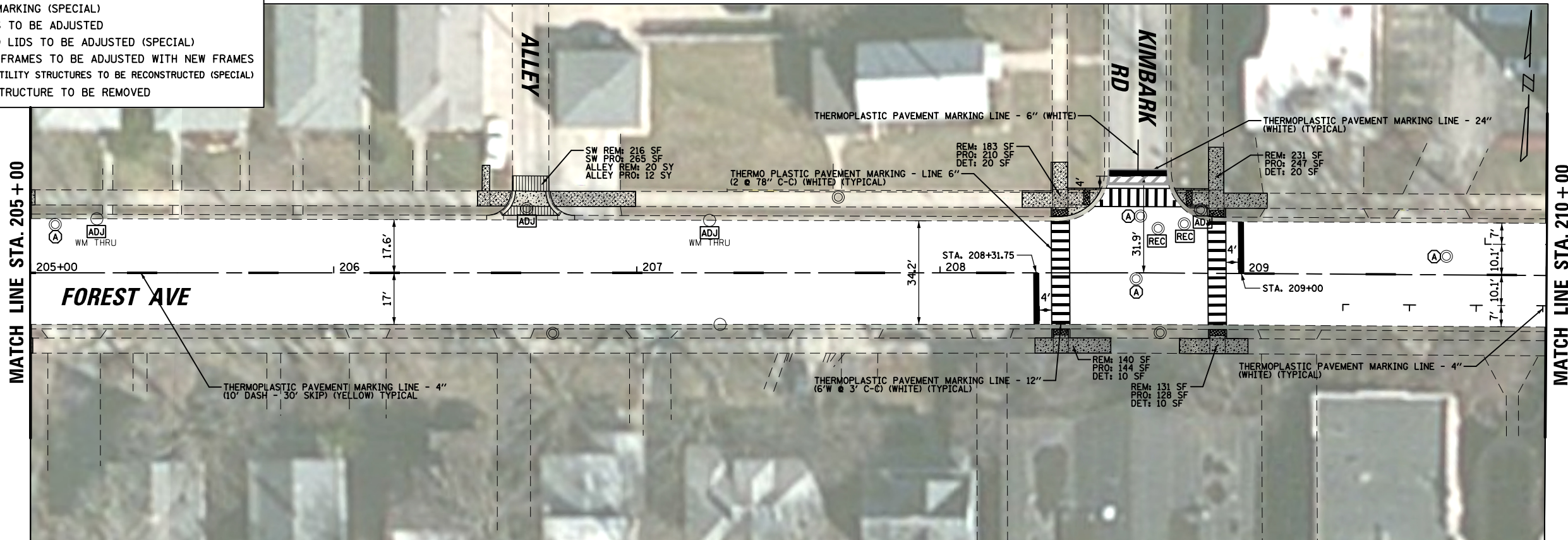
**END BARRYPPOINT RD IMPROVEMENTS  
 STA 122 + 42.79**  
**BEGIN IMPROVEMENTS  
 ON IDOT CONTRACT 61E90**

FILE NAME =	USER NAME = dschroeder	DESIGNED - DJS	REVISED -	<b>STATE OF ILLINOIS          DEPARTMENT OF TRANSPORTATION</b>	<b>ROADWAY PLAN          BARRYPPOINT ROAD, FOREST AVENUE, AND HERRICK ROAD</b>	F.A.U. RTE. 3569 1472	SECTION 17-00085-00-R5	COUNTY COOK	TOTAL SHEETS 17	SHEET NO. 6		
Default	N:\RIVERSIDE\120544\00083\Civil\PLN2\Barrypoint_12054400083.dgn	DRAWN - DJS	REVISED -			SCALE: *SCALE*	SHEET 2 OF 2 SHEETS	CONTRACT NO. 61E90		ILLINOIS FED. AID PROJECT		
	PLOT SCALE = 48"	CHECKED - OCG	REVISED -			STA. 111+00	TO STA.					
	PLOT DATE = 5/9/2018	DATE - 5/9/2018	REVISED -									



**LEGEND**

	HOT MIX ASPHALT SURFACE REMOVAL, 2 1/4"		EXISTING MANHOLE
	LEVELING BINDER (MACHINE METHOD), N50, 1"		EXISTING CATCH BASIN OR INLET
	HOT-MIX ASPHALT SURFACE COURSE, MIX "D", N50, 1 1/2"		DETECTABLE WARNING
	PORTLAND CEMENT CONCRETE SURFACE REMOVAL, 2 1/4"		SIDEWALK REMOVAL
	LEVELING BINDER (MACHINE METHOD), N50, 1"		CLASS D PATCHES, TYPE IV, 6 INCH
	HOT-MIX ASPHALT SURFACE COURSE, MIX "D", N50, 1 1/2"		EXPOSED AGGREGATE SURFACE
	HOT MIX ASPHALT SURFACE REMOVAL - BUTT JOINT		PORTLAND CEMENT CONCRETE ALLEY PAVEMENT, 8"
			PAVEMENT MARKING (SPECIAL)
			STRUCTURES TO BE ADJUSTED
			FRAMES AND LIDS TO BE ADJUSTED (SPECIAL)
			VALVE BOX FRAMES TO BE ADJUSTED WITH NEW FRAMES
			DRAINAGE & UTILITY STRUCTURES TO BE RECONSTRUCTED (SPECIAL)
			DRAINAGE STRUCTURE TO BE REMOVED

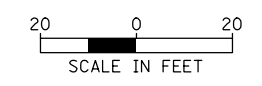
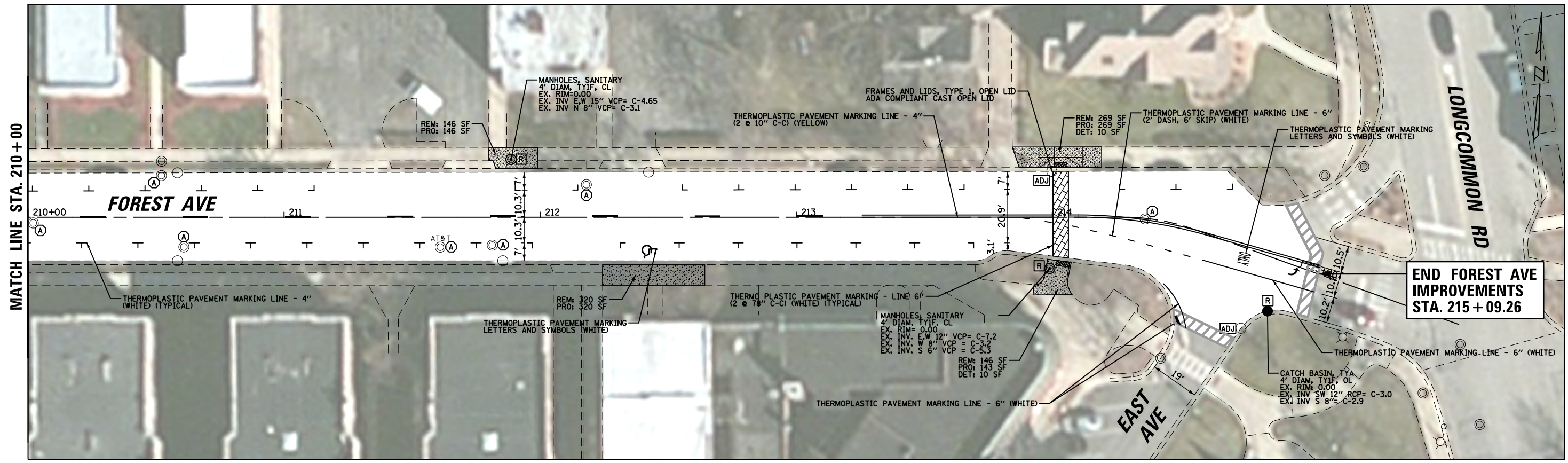


FILE NAME =	USER NAME = dschroeder	DESIGNED - DJS	REVISED -
N:\RIVERSIDE\120544\00083\Civil\PLN3_Forest1.12054400083.dgn		DRAWN - DJS	REVISED -
Default	PLOT SCALE = 48"	CHECKED - OCG	REVISED -
	PLOT DATE = 5/9/2018	DATE - 5/9/2018	REVISED -

**STATE OF ILLINOIS  
DEPARTMENT OF TRANSPORTATION**

<b>ROADWAY PLAN</b>			
<b>BARRYPPOINT ROAD, FOREST AVENUE, AND HERRICK ROAD</b>			
SCALE: *SCALE*	SHEET 1	OF 2 SHEETS	STA. 200+50.67 TO STA. 210+00

F.A.U. R.T.E. 3569 1472	SECTION 17-00085-00-R5	COUNTY COOK	TOTAL SHEETS 17	SHEET NO. 7
CONTRACT NO. 61E90				ILLINOIS FED. AID PROJECT



LEGEND	
[Symbol]	HOT MIX ASPHALT SURFACE REMOVAL, 2 1/4"
[Symbol]	LEVELING BINDER (MACHINE METHOD), N50, 1"
[Symbol]	HOT-MIX ASPHALT SURFACE COURSE, MIX "D", N50, 1 1/2"
[Symbol]	PORTLAND CEMENT CONCRETE SURFACE REMOVAL, 2 1/4"
[Symbol]	LEVELING BINDER (MACHINE METHOD), N50, 1"
[Symbol]	HOT-MIX ASPHALT SURFACE COURSE, MIX "D", N50, 1 1/2"
[Symbol]	HOT MIX ASPHALT SURFACE REMOVAL - BUTT JOINT
[Symbol]	EXISTING MANHOLE
[Symbol]	EXISTING CATCH BASIN OR INLET
[Symbol]	DETECTABLE WARNING
[Symbol]	SIDEWALK REMOVAL
[Symbol]	CLASS D PATCHES, TYPE IV, 6 INCH
[Symbol]	EXPOSED AGGREGATE SURFACE
[Symbol]	PORTLAND CEMENT CONCRETE ALLEY PAVEMENT, 8"
[Symbol]	PAVEMENT MARKING (SPECIAL)
[Symbol]	STRUCTURES TO BE ADJUSTED
[Symbol]	FRAMES AND LIDS TO BE ADJUSTED (SPECIAL)
[Symbol]	VALVE BOX FRAMES TO BE ADJUSTED WITH NEW FRAMES
[Symbol]	DRAINAGE & UTILITY STRUCTURES TO BE RECONSTRUCTED (SPECIAL)
[Symbol]	DRAINAGE STRUCTURE TO BE REMOVED

FILE NAME =	USER NAME = dschroeder	DESIGNED - DJS	REVISED -
N:\RIVERSIDE\120544\00083\Civil\PLN4_Forest2.12054400083.dgn		DRAWN - DJS	REVISED -
Default	PLOT SCALE = 48"	CHECKED - OCG	REVISED -
	PLOT DATE = 5/9/2018	DATE - 5/9/2018	REVISED -

**STATE OF ILLINOIS  
DEPARTMENT OF TRANSPORTATION**

**ROADWAY PLAN  
BARRYPOINT ROAD, FOREST AVENUE, AND HERRICK ROAD**

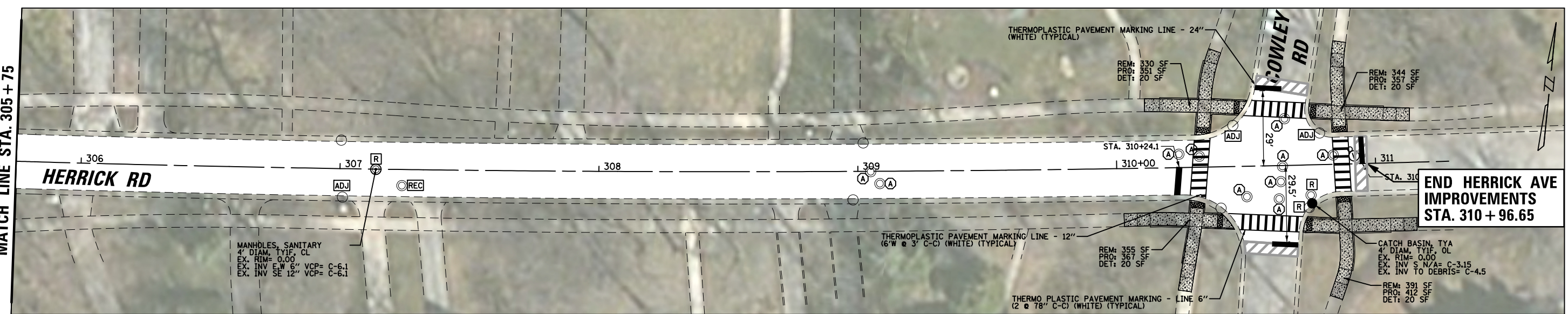
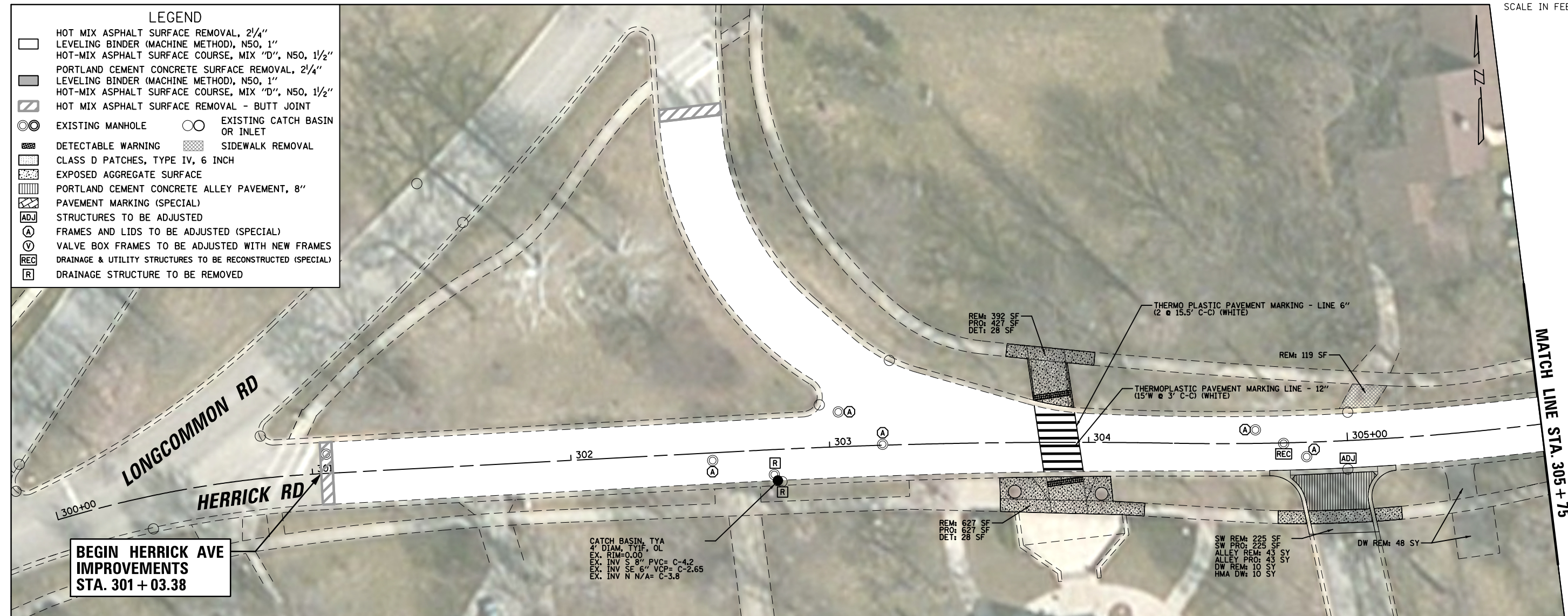
SCALE: \*SCALE\* SHEET 2 OF 2 SHEETS STA. 210+00 TO STA. 215+07.35

F.A.U. RTE.	SECTION	COUNTY	TOTAL SHEETS	SHEET NO.
3569 1472	17-00085-00-R5	COOK	17	8
CONTRACT NO. 61E90				
ILLINOIS FED. AID PROJECT				



**LEGEND**

	HOT MIX ASPHALT SURFACE REMOVAL, 2 1/4"
	LEVELING BINDER (MACHINE METHOD), N50, 1"
	HOT-MIX ASPHALT SURFACE COURSE, MIX "D", N50, 1 1/2"
	PORTLAND CEMENT CONCRETE SURFACE REMOVAL, 2 1/4"
	LEVELING BINDER (MACHINE METHOD), N50, 1"
	HOT-MIX ASPHALT SURFACE COURSE, MIX "D", N50, 1 1/2"
	HOT MIX ASPHALT SURFACE REMOVAL - BUTT JOINT
	EXISTING MANHOLE
	EXISTING CATCH BASIN OR INLET
	DETECTABLE WARNING
	SIDEWALK REMOVAL
	CLASS D PATCHES, TYPE IV, 6 INCH
	EXPOSED AGGREGATE SURFACE
	PORTLAND CEMENT CONCRETE ALLEY PAVEMENT, 8"
	PAVEMENT MARKING (SPECIAL)
	STRUCTURES TO BE ADJUSTED
	FRAMES AND LIDS TO BE ADJUSTED (SPECIAL)
	VALVE BOX FRAMES TO BE ADJUSTED WITH NEW FRAMES
	DRAINAGE & UTILITY STRUCTURES TO BE RECONSTRUCTED (SPECIAL)
	DRAINAGE STRUCTURE TO BE REMOVED

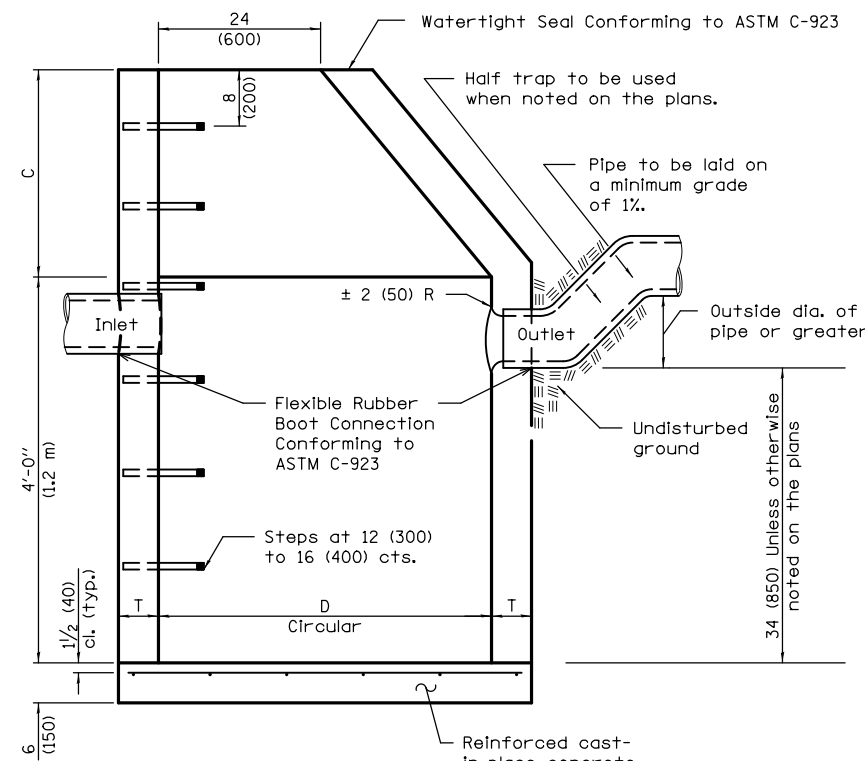


FILE NAME =	USER NAME = dschroeder	DESIGNED - DJS	REVISED -
N:\RIVERSIDE\120544.00083\Civil\PLN5_Herrick_12054400083.dgn		DRAWN - DJS	REVISED -
Default	PLOT SCALE = 48"	CHECKED - OCG	REVISED -
	PLOT DATE = 5/9/2018	DATE - 5/9/2018	REVISED -

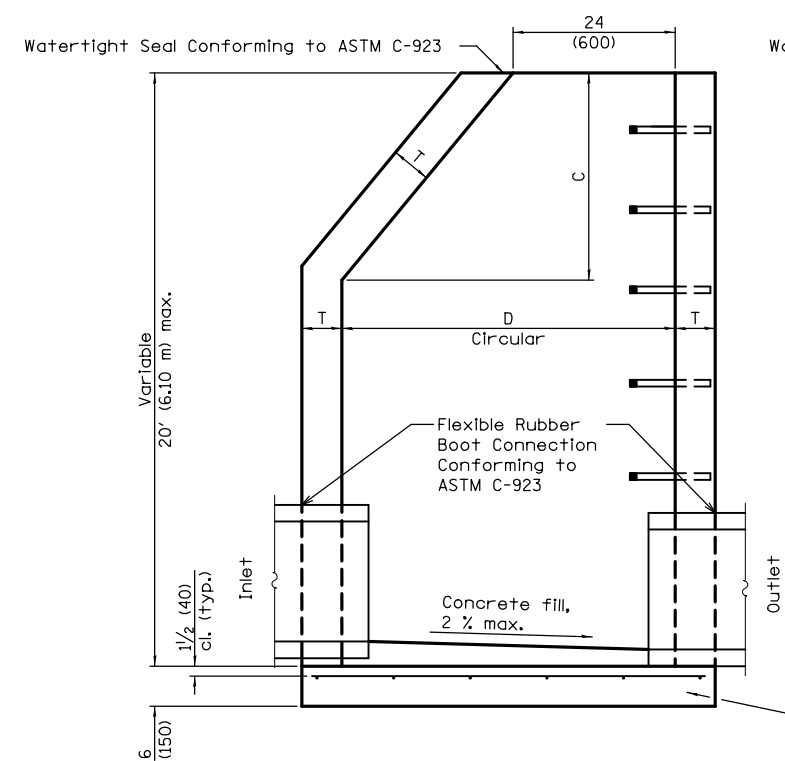
**STATE OF ILLINOIS  
DEPARTMENT OF TRANSPORTATION**

**ROADWAY PLAN**  
**BARRYPOINT ROAD, FOREST AVENUE, AND HERRICK ROAD**  
SCALE: #SCALE# SHEET 1 OF 1 SHEETS STA. 300+00 TO STA. 311+00

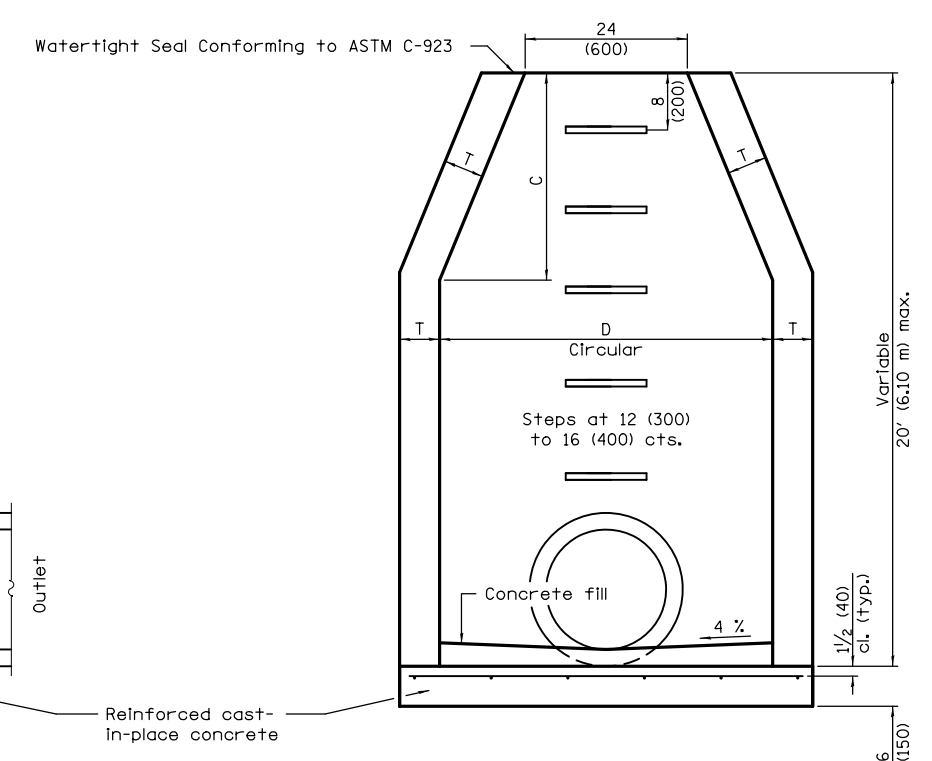
F.A.U. RTE. 3569 1472	SECTION 17-00085-00-R5	COUNTY COOK	TOTAL SHEETS 17	SHEET NO. 9
CONTRACT NO. 61E90				ILLINOIS FED. AID PROJECT



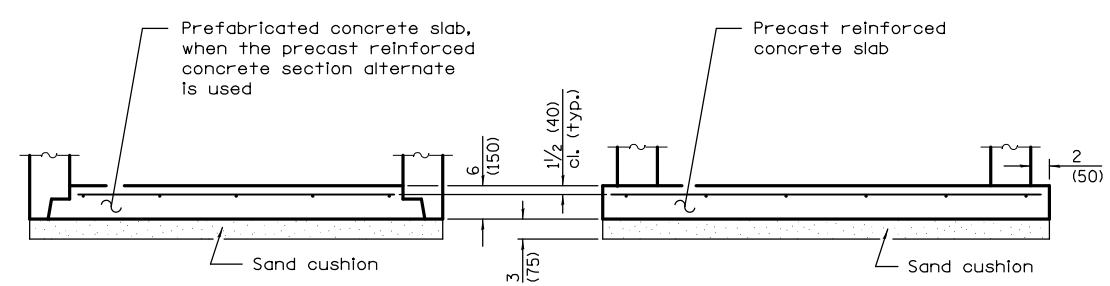
**ELEVATION**  
(Standard Outlet)



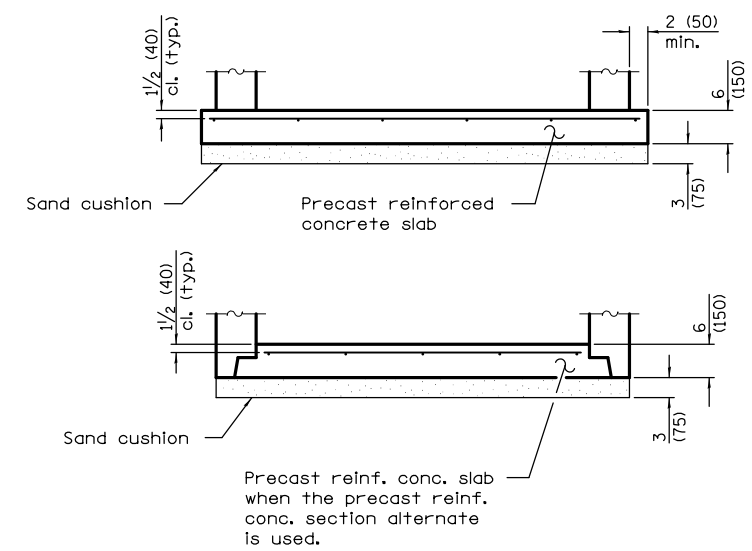
**ELEVATION - ECCENTRIC**



**ELEVATION - CONCENTRIC**



**ALTERNATE BOTTOM SLAB**



**ALTERNATE BOTTOM SLAB**

ALTERNATE MATERIALS FOR WALLS	D	C*	T (min.)
Precast Reinforced Concrete Section	4'-0" (1.2 m) 5'-0" (1.5 m)	30 (750) 3'-9" (1.15 m)	4 (100) 5 (125)
Cast-in-place Concrete	4'-0" (1.2 m) 5'-0" (1.5 m)	30 (750) 3'-9" (1.15 m)	6 (150) 6 (150)

\* For precast reinforced concrete sections, dimension "C" may vary from the dimension given to plus 6 (150).

ALTERNATE MATERIALS FOR WALLS	D	C*	T (min.)
Precast Reinforced Concrete Section	4'-0" (1.2 m) 5'-0" (1.5 m)	30 (750) 3'-9" (1.15 m)	4 (100) 5 (125)
Cast-in-place Concrete	4'-0" (1.2 m) 5'-0" (1.5 m)	30 (750) 3'-9" (1.15 m)	6 (150) 6 (150)

\* For precast reinforced concrete sections, dimension "C" may vary from the dimension given to plus 6 (150).

**GENERAL NOTES**

Bottom slabs shall be reinforced with a minimum of 0.20 sq. in./ft (420 sq. mm/m) in both directions with a maximum spacing of 12 (300).

Bottom slabs may be connected to the riser as determined by the fabricator; however, only a single row of reinforcement around the perimeter may be utilized.

See Standard 602601 for optional precast reinforced concrete flat slab top.

See Standard 602701 for details of steps.

All dimensions are in inches (millimeters) unless otherwise shown.

**GENERAL NOTES**  
Bottom slabs shall be reinforced with a minimum of 0.31 sq. in./ft. (660 sq. mm/m) in both directions with a maximum spacing of 12 (300).

Bottom slabs may be connected to the riser as determined by the fabricator; however, only a single row of reinforcement around the perimeter may be utilized.

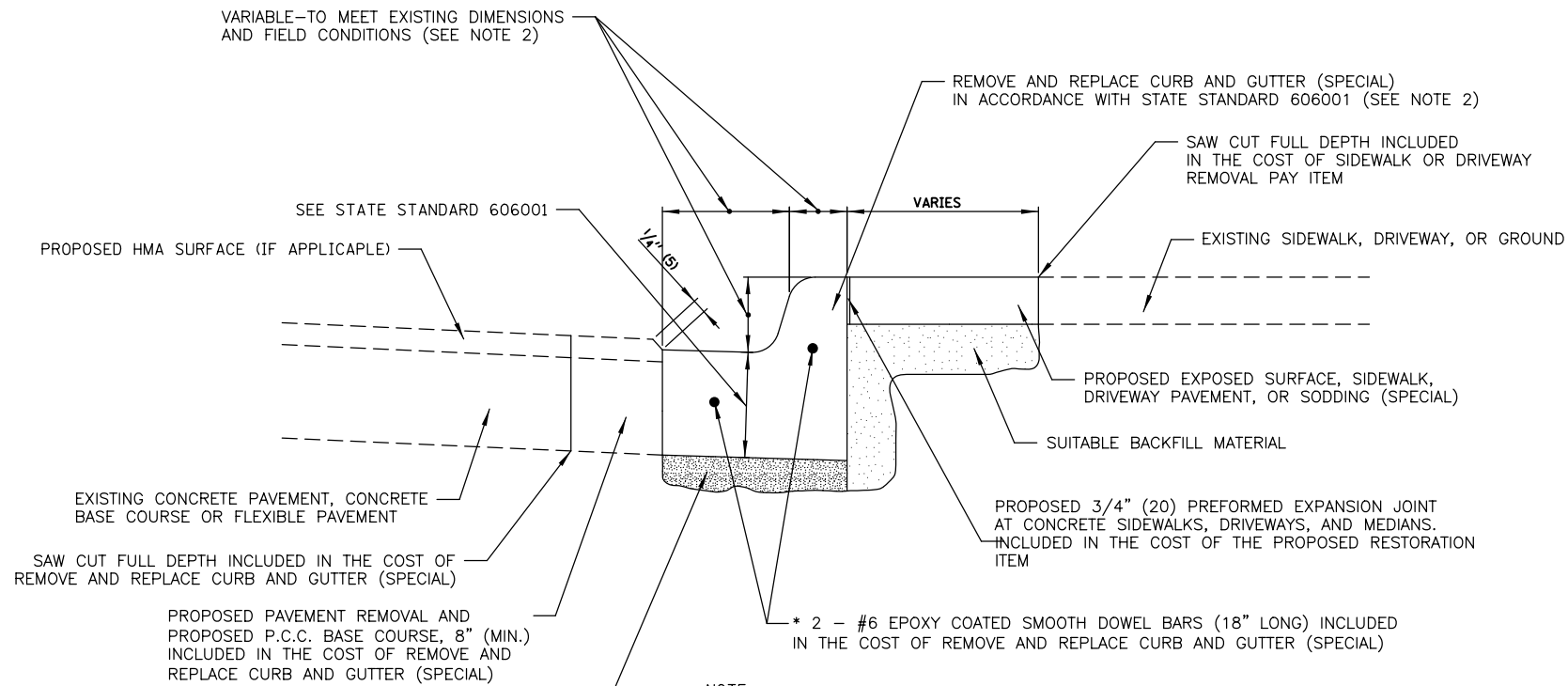
See Standard 602701 for details of steps.

See Standard 602601 for optional Precast Reinforced Concrete Flat Slab Top.

All dimensions are in inches (millimeters) unless otherwise shown.

**CATCH BASIN, TYPE A**

**MANHOLES, TYPE A**



UNSUITABLE SUB-BASE MATERIAL TO BE REMOVED, IF DIRECTED BY THE ENGINEER, SHALL BE REPLACED WITH EITHER SUB-BASE GRANULAR MATERIAL TYPE B OR ADDITIONAL THICKNESS OF CONCRETE.

REMOVAL AND REPLACEMENT 4" (100) OR LESS IS INCLUDED IN THE REMOVE AND REPLACE CURB AND GUTTER (SPECIAL)

REMOVAL AND REPLACEMENT IN EXCESS OF 4" (100) WILL BE PAID FOR IN ACCORDANCE WITH THE ARTICLE 109.04 OF THE STANDARD SPECIFICATIONS.

**BASIS OF PAYMENT:**

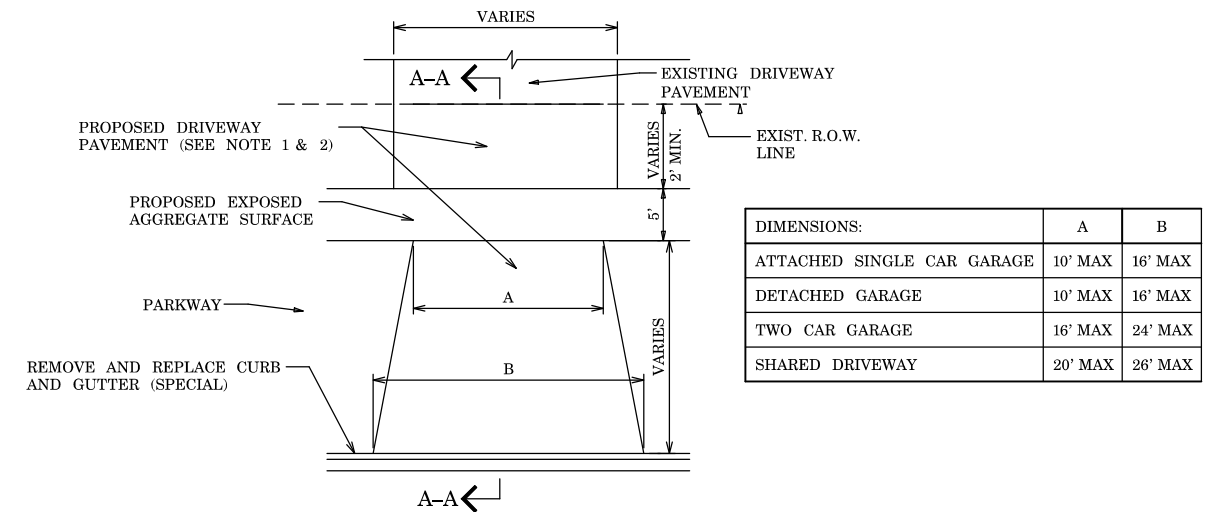
THIS WORK WILL BE PAID FOR AT THE CONTRACT UNIT PRICE PER FOOT (METER) FOR "REMOVE AND REPLACE CURB AND GUTTER (SPECIAL)"

ALL DIMENSIONS ARE IN INCHES (MILLIMETERS) UNLESS OTHERWISE SHOWN.

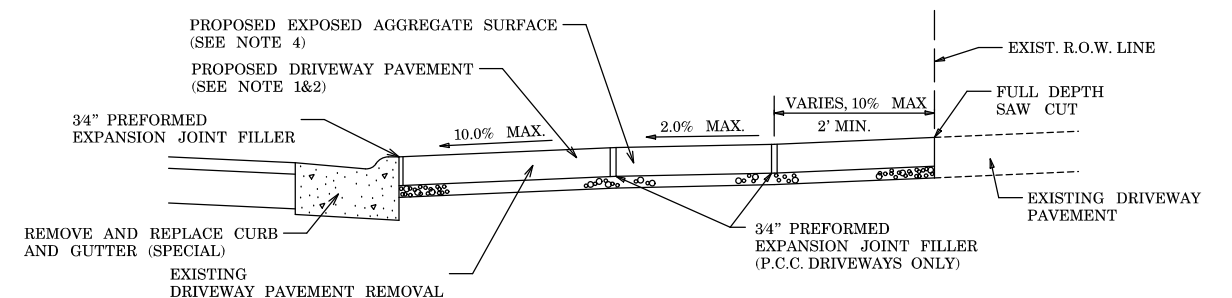
**NOTE:**

1. SIDEWALK, DRIVEWAY PAVEMENT OR MEDIAN SURFACE SHALL BE SIMILAR TO THE MATERIAL BEING REMOVED AND WILL BE PAID FOR SEPARATELY.
2. CURB OR CURB AND GUTTER REMOVAL SHALL MATCH THE SHAPE OF THE EXISTING CURB OR CURB AND GUTTER UNLESS OTHERWISE DIRECTED BY THE ENGINEER IN THE FIELD
4. LONGITUDINAL BARS, IF ENCOUNTERED IN THE EXISTING CURB OR CURB AND GUTTER, ARE NOT TO BE REPLACED. CUTTING AND REMOVING LONGITUDINAL BARS SHALL BE INCLUDED IN THE COST OF CURB OR CURB AND GUTTER REMOVAL AND REPLACEMENT.
5. THE COST OF HMA SURFACE REMOVAL IN THE EXISTING GUTTER FLAG SHALL BE INCLUDED IN THE COST OF THE CURB AND GUTTER REMOVAL AND REPLACEMENT.
6. THE REMOVAL AND REPLACEMENT OF THE EXISTING CURB OR CURB AND GUTTER SHALL BE DONE IN ACCORDANCE WITH THE APPLICABLE PORTIONS OF SECTION 440 AND 606 OF THE STANDARD SPECIFICATIONS.
7. THE LOCATIONS OF REMOVAL AND REPLACEMENT OF EXISTING CURB OR CURB AND GUTTER SHALL BE DETERMINED BY THE RESIDENT ENGINEER AT THE TIME OF CONSTRUCTION.

**REMOVE AND REPLACE CURB AND GUTTER (SPECIAL)**



DIMENSIONS:	A	B
ATTACHED SINGLE CAR GARAGE	10' MAX	16' MAX
DETACHED GARAGE	10' MAX	16' MAX
TWO CAR GARAGE	16' MAX	24' MAX
SHARED DRIVEWAY	20' MAX	26' MAX



**SECTION A-A**

**TYPICAL DRIVEWAY DETAILS**

**NOTES:**

1. THE PROPOSED DRIVEWAY PAVEMENT SHALL CONSIST OF:
  - A) PORTLAND CEMENT CONCRETE DRIVEWAY PAVEMENT, 6 INCH 6" PORTLAND CEMENT CONCRETE AND 6" OF AGGREGATE BASE COURSE TYPE B
  - B) HOT MIX ASPHALT DRIVEWAY PAVEMENT, 5" 2" HOT MIX ASPHALT SURFACE COURSE, N50 3" HOT MIX ASPHALT BINDER COURSE, N50 6" AGGREGATE BASE COURSE, TYPE B
  - C) BRICK PAVER REMOVAL AND REPLACEMENT
2. ALL DRIVEWAYS BETWEEN THE SIDEWALK AND BACK OF CURB SHALL BE PORTLAND CEMENT CONCRETE UNLESS THE EXISTING DRIVEWAY IS BRICK PAVERS. DRIVEWAYS BEYOND THE SIDEWALK SHALL BE REPLACED IN KIND.
3. REMOVAL OF EXISTING HMA OR PCC PAVEMENT DRIVEWAY SHALL BE PAID FOR AS DRIVEWAY PAVEMENT REMOVAL
4. PREFORMED EXPANSION JOINT FILLER SHALL BE INCLUDED IN THE COST OF PORTLAND CEMENT CONCRETE DRIVEWAY PAVEMENT, 6"
5. ALL REQUIRED EARTH EXCAVATION AND BASE PREPARATION SHALL BE INCLUDED IN THE COST OF THE DRIVEWAY INSTALLATION
6. SIDEWALK THROUGH DRIVEWAY SHALL BE 6" THICK AND SHALL BE PAID FOR AS EXPOSED AGGREGATE SURFACE
7. DRIVEWAY PAVEMENT REMOVAL SHALL OCCUR IF THE ADJACENT CURB AND GUTTER IS TO BE REMOVED. ALL LIMITS SHALL BE DETERMINED BY THE ENGINEER IN THE FIELD

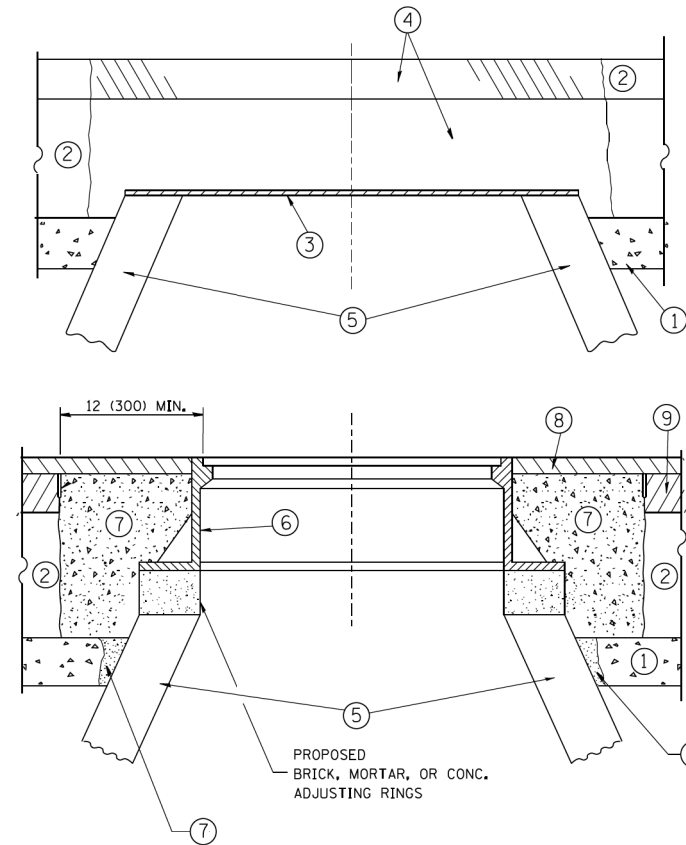
FILE NAME =	USER NAME = dschroeder	DESIGNED - DJS	REVISED -
N:\RIVERSIDE\120544.00083\Civ\1\DET.12054400083_02.SHT		DRAWN - DJS	REVISED -
Default	PLOT SCALE = 48"	CHECKED - OCG	REVISED -
	PLOT DATE = 5/9/2018	DATE - 5/9/2018	REVISED -

**STATE OF ILLINOIS  
DEPARTMENT OF TRANSPORTATION**

**CONSTRUCTION DETAILS  
BARRYPOINT ROAD, FOREST AVENUE, AND HERRICK ROAD**

SCALE: \*SCALE\* SHEET 2 OF 2 SHEETS STA. TO STA.

F.A.U. RTE.	SECTION	COUNTY	TOTAL SHEETS	SHEET NO.
3569 1472	17-00085-00-R5	COOK	17	11
CONTRACT NO. 61E90				
ILLINOIS FED. AID PROJECT				



**CONSTRUCTION PROCEDURES**

**STAGE 1 (BEFORE PAVEMENT MILLING)**

- A) REMOVE A MINIMUM OF 12 (300) OF THE PAVEMENT FROM AROUND THE STRUCTURE.
- B) REMOVE THE EXISTING FRAME AND LID FROM THE STRUCTURE.
- C) COVER THE STRUCTURE OPENING WITH A 36 (900) DIAMETER METAL PLATE.
- D) BACKFILL WITH CRUSHED STONE AND A MINIMUM 1/2 (40) THICK HMA SURFACE MIX APPROVED BY THE ENGINEER.

**STAGE 2 (AFTER PAVEMENT MILLING)**

- A) REMOVE THE HMA SURFACE MIX AND CRUSHED STONE.
- B) INSTALL THE FRAME AND LID; ADJUST THE FRAME TO ITS FINAL SURFACE ELEVATION.
- C) THE SURROUNDING SPACE SHALL BE FILLED WITH CLASS PP-1\* CONCRETE TO THE ELEVATION OF THE SURFACE OF THE EXISTING BASE COURSE OR THE BINDER COURSE.

\* UNLESS OTHERWISE SPECIFIED IN THE PLANS.

THE PROCEDURE EXPLAINED ABOVE SHALL CONFORM TO THE APPLICABLE PORTIONS OF SECTIONS 353, 406, 602, AND 603 OF THE STANDARD SPECIFICATIONS EXCEPT THAT "THE CONTRACTOR SHALL ADJUST THE STRUCTURES TO THE FINISHED PAVEMENT ELEVATION NO MORE THAN 5 CALENDAR DAYS PRIOR TO PLACEMENT OF THE FINAL LIFT OF SURFACE UNLESS APPROVED BY THE ENGINEER."

**LEGEND**

- ① SUB-BASE GRANULAR MATERIAL
- ② EXISTING PAVEMENT
- ③ 36 (900) DIAMETER METAL PLATE
- ④ PROPOSED CRUSHED STONE AND HMA SURFACE MIX
- ⑤ EXISTING STRUCTURE
- ⑥ FRAME AND LID (SEE NOTES)
- ⑦ CLASS PP-1\* CONCRETE
- ⑧ PROPOSED HMA SURFACE COURSE
- ⑨ PROPOSED HMA BINDER COURSE

**LOCATION OF STRUCTURES:**

THE CONTRACTOR WILL BE REQUIRED TO KEEP A RECORD OF THE LOCATIONS OF THE BURIED STRUCTURES ACCORDING TO THE STATION AND DISTANCE LEFT OR RIGHT OF THE CENTERLINE OF PAVEMENT. UPON COMPLETION OF THE WORK, THE CONTRACTOR WILL DELIVER THE RECORD TO THE ENGINEER.

**BASIS OF PAYMENT:**

REMOVING FRAMES AND LIDS ON DRAINAGE AND UTILITY STRUCTURES IN THE PAVEMENT PRIOR TO MILLING, AND ADJUSTING TO FINAL GRADE PRIOR TO PLACING THE SURFACE COURSE, WILL BE PAID FOR AT THE CONTRACT UNIT PRICE EACH FOR "FRAMES AND LIDS TO BE ADJUSTED (SPECIAL)."

THIS WORK WILL NOT BE PAID FOR WHEN DRAINAGE AND UTILITY STRUCTURES ARE SPECIFIED FOR PAYMENT AS STRUCTURE RECONSTRUCTION.

NEW FRAMES AND LIDS, WHEN SPECIFIED, WILL BE PAID FOR SEPARATELY.

**NOTES:**

EXISTING BROKEN FRAMES AND LIDS SHALL BE REMOVED AND DISPOSED OF BY THE CONTRACTOR AND SHALL BE REPLACED AS DIRECTED BY THE ENGINEER. REPLACEMENT FRAMES AND LIDS WILL BE PAID FOR IN ACCORDANCE WITH ARTICLE 109.04 OF THE STANDARD SPECIFICATIONS UNLESS A SEPARATE PAY ITEM HAS BEEN PROVIDED.

IF THE EXISTING LIDS ARE OPEN, THE FRAME WILL BE ADJUSTED TO THE ELEVATION OF THE MILLED PAVEMENT SURFACE PRIOR TO THE MILLING OPERATION. THE FRAME WILL NOT BE REMOVED AND COVERED BY THE METAL PLATE.

CITY OF CHICAGO CASTINGS ARE THE PROPERTY OF THE CITY AND THE CONTRACTOR SHALL NOTIFY THE CITY FOR REMOVAL AND DISPOSITION OF THE CASTINGS.

THE METAL PLATE USED TO COVER THE STRUCTURE SHALL REMAIN THE PROPERTY OF THE CONTRACTOR.

WHEN STRUCTURES ARE TO BE ADJUSTED OR RECONSTRUCTED, THE LOWERING AND RAISING OF THE FRAMES AND LIDS WILL NOT BE PAID FOR SEPARATELY BUT WILL BE INCLUDED IN THE COST OF THE CORRESPONDING PAY ITEM.

**DETAILS FOR FRAMES AND LIDS ADJUSTMENT WITH MILLING**

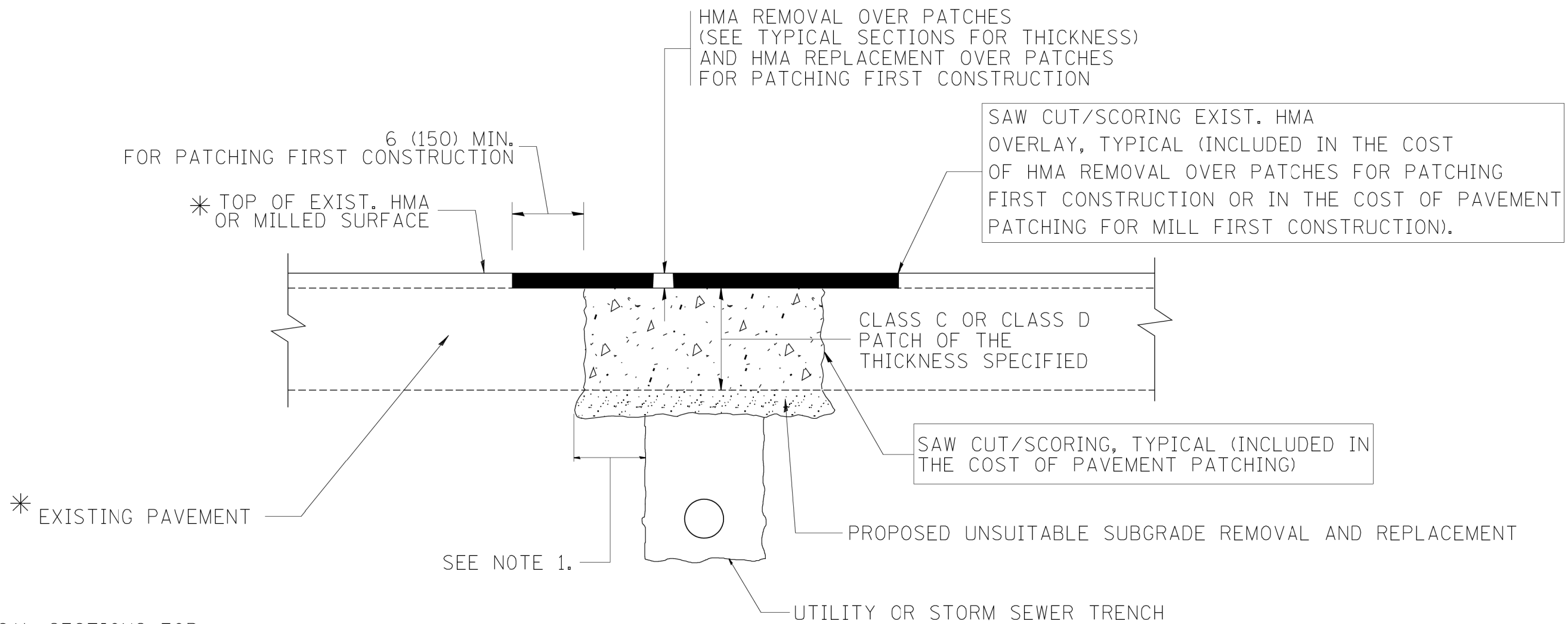
ALL DIMENSIONS ARE IN INCHES (MILLIMETERS) UNLESS OTHERWISE SHOWN

FILE NAME =	USER NAME = bauerdl	DESIGNED - R. SHAH	REVISED - R. WIEDEMAN 05-14-04
ca:\pwork\pwork\baerd1\d0108315\bd08.dgn		DRAWN -	REVISED - R. BORO 01-01-07
	PLOT SCALE = 1/8" = 1'-0"	CHECKED -	REVISED - R. BORO 03-09-11
	PLOT DATE = 12/6/2011	DATE - 10-25-94	REVISED - R. BORO 12-06-11

**STATE OF ILLINOIS  
DEPARTMENT OF TRANSPORTATION**

DETAILS FOR FRAMES AND LIDS ADJUSTMENT WITH MILLING			
SCALE: NONE	SHEET NO. 1 OF 1 SHEETS	STA.	TO STA.

F.A.U. RTE. 3569/1472	SECTION 16-00083-00-RS	COUNTY COOK	TOTAL SHEETS 17	SHEET NO. 12
BD600-03 (BD-8)		CONTRACT NO. 61E90		
FED. ROAD DIST. NO. 1 ILLINOIS FED. AID PROJECT				



\* SEE TYPICAL SECTIONS FOR THICKNESS AND MATERIALS

**NOTES:**

1. THE WIDTH OF THE FULL DEPTH PATCH OVER A TRENCH SHALL BE 12 (300) WIDER ON EACH SIDE OF THE TRENCH.
2. FOR METHOD OF MEASUREMENT AND BASIS OF PAYMENT, SEE RECURRING SPECIAL PROVISION "PATCHING WITH HOT-MIX ASPHALT OVERLAY REMOVAL".

SEQUENCE OF CONSTRUCTION (PATCHING FIRST)

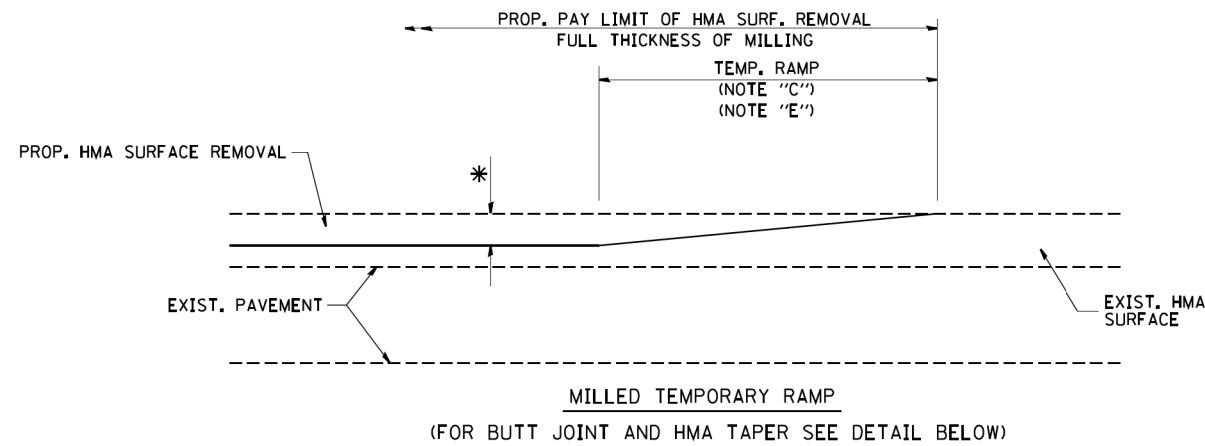
1. REMOVE THE EXISTING HMA MATERIAL OVER THE AREA TO BE PATCHED.
2. REMOVE AND REPLACE WITH CLASS C OR D PATCH.
3. REPLACE HMA MATERIAL OVER THE AREA TO BE PATCHED.

SEQUENCE OF CONSTRUCTION (MILLING FIRST)

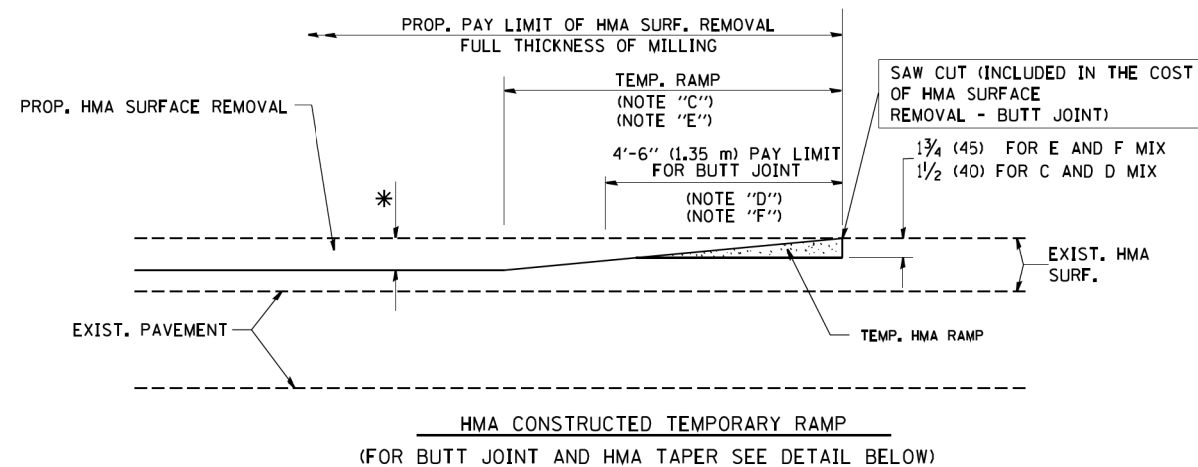
1. MILL HMA FIRST IF THERE IS AT LEAST 4 1/2 INCHES OR MORE OF HMA MATERIAL ON TOP OF THE EXISTING PAVEMENT OR IF THE PAVEMENT IS FULL DEPTH HMA. A MINIMUM OF 2 INCHES OF HMA MATERIAL SHALL BE IN PLACE AFTER MILLING.
2. REMOVE AND REPLACE WITH FULL DEPTH CLASS D PATCHES TO TOP OF MILLED SURFACE.

ALL DIMENSIONS ARE IN INCHES (MILLIMETERS) UNLESS OTHERWISE SHOWN.

FILE NAME = c:\projects\distad22x34\bd22.dgn	USER NAME = bauerdl	DESIGNED - R. SHAH	REVISED - A. ABBAS 04-27-98	<b>STATE OF ILLINOIS DEPARTMENT OF TRANSPORTATION</b>	<b>PAVEMENT PATCHING FOR HMA SURFACED PAVEMENT</b>			F.A.U. RTE. 3569 1472	SECTION 16-00083-00-RS	COUNTY COOK	TOTAL SHEETS 17	SHEET NO. 13
	PLOT SCALE = 50.000' / IN.	CHECKED -	REVISED - R. BORO 09-04-07		SCALE: NONE	SHEET NO. 1 OF 1 SHEETS	STA.	TO STA.	<b>BD400-04 (BD-22)</b>		CONTRACT NO. 61E90	
	PLOT DATE = 10/27/2008	DATE - 10-25-94	REVISED - K. ENG 10-27-08		FED. ROAD DIST. NO. 1   ILLINOIS   FED. AID PROJECT							

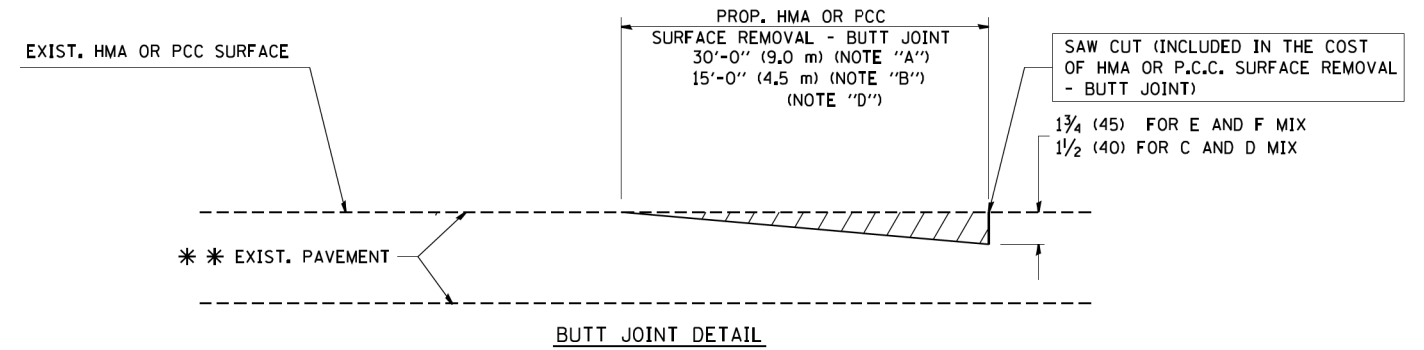


**OPTION 1**

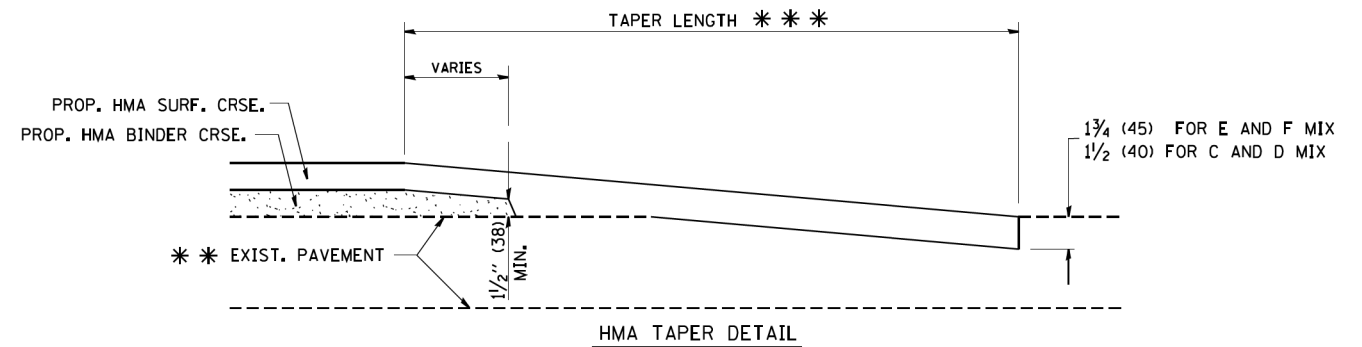


**OPTION 2**

**TYPICAL TEMPORARY RAMP**



**BUTT JOINT DETAIL**



**HMA TAPER DETAIL**

**TYPICAL BUTT JOINT AND HMA TAPER FOR RESURFACING ONLY**

\* \* \* PC CONCRETE, HMA OR HMA RESURFACED PAVEMENT.

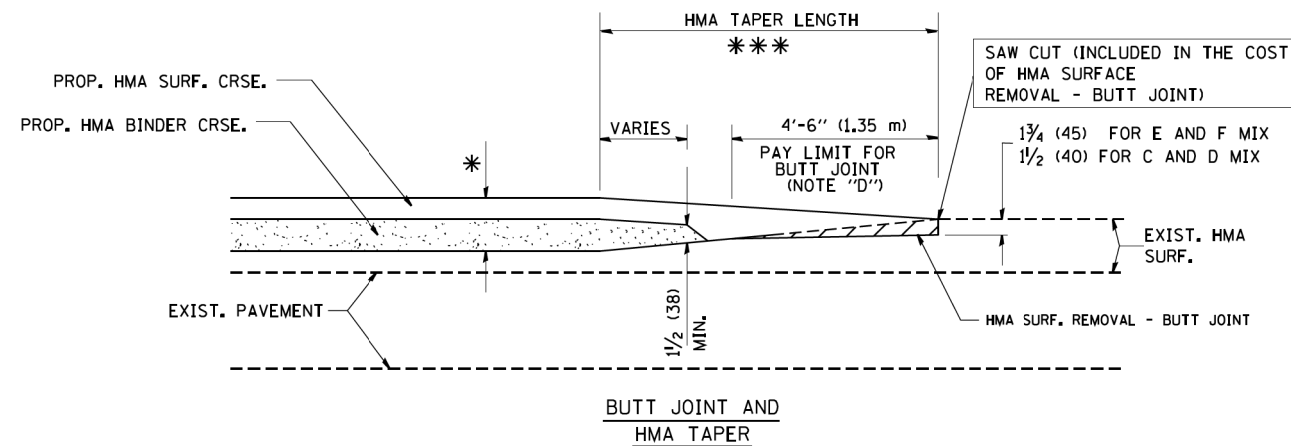
**NOTES**

- A: MAINLINE ROADWAYS AND MAJOR SIDE ROADS.
  - B: MINOR SIDE ROADS.
  - C: THE TEMP. RAMP SHALL BE CONSTRUCTED IMMEDIATELY UPON REMOVAL OF THE EXISTING HMA SURFACE.
  - D: THE BUTT JOINT SHALL BE CONSTRUCTED IMMEDIATELY PRIOR TO PLACING THE PROPOSED HMA COURSES.
  - E: TAPER THE TEMP. RAMP AT A RATE OF 3'-0" (900 mm) PER 1 INCH (25 mm) OF MILLING THICKNESS.
  - F: INSTALLATION AND REMOVAL OF THE 4'-6" (1.35 m) TEMP. RAMP IS INCLUDED IN COST OF HMA SURFACE REMOVAL - BUTT JOINT
  - G: SEE ARTICLE 406.08 AND 406.14 OF THE STANDARD SPECIFICATIONS FOR "HMA AND/OR PCC SURFACE REMOVAL, BUTT JOINT".
- \* SEE TYPICAL SECTIONS FOR MILLING THICKNESS.
- \* \* \* 20'-0" (6.1 m) PER 1 (25) RESURFACING (NOTE "A")  
10'-0" (3.0 m) PER 1 (25) RESURFACING (NOTE "B")

**BASIS OF PAYMENT:**

THE BUTT JOINT WILL BE PAID FOR AT THE CONTRACT UNIT PRICE PER SQUARE YARD (SQUARE METER) FOR "HOT-MIX ASPHALT SURFACE REMOVAL - BUTT JOINT" OR FOR "PORTLAND CEMENT CONCRETE SURFACE REMOVAL - BUTT JOINT".

ALL DIMENSIONS ARE IN INCHES (MILLIMETERS) UNLESS OTHERWISE SHOWN.



**TYPICAL BUTT JOINT AND HMA TAPER FOR MILLING AND RESURFACING**

FILE NAME = W:\diststa\22x34\bd32.dgn

USER NAME = gaglianobt  
PLOT SCALE = 50.0000' / IN.  
PLOT DATE = 1/4/2008

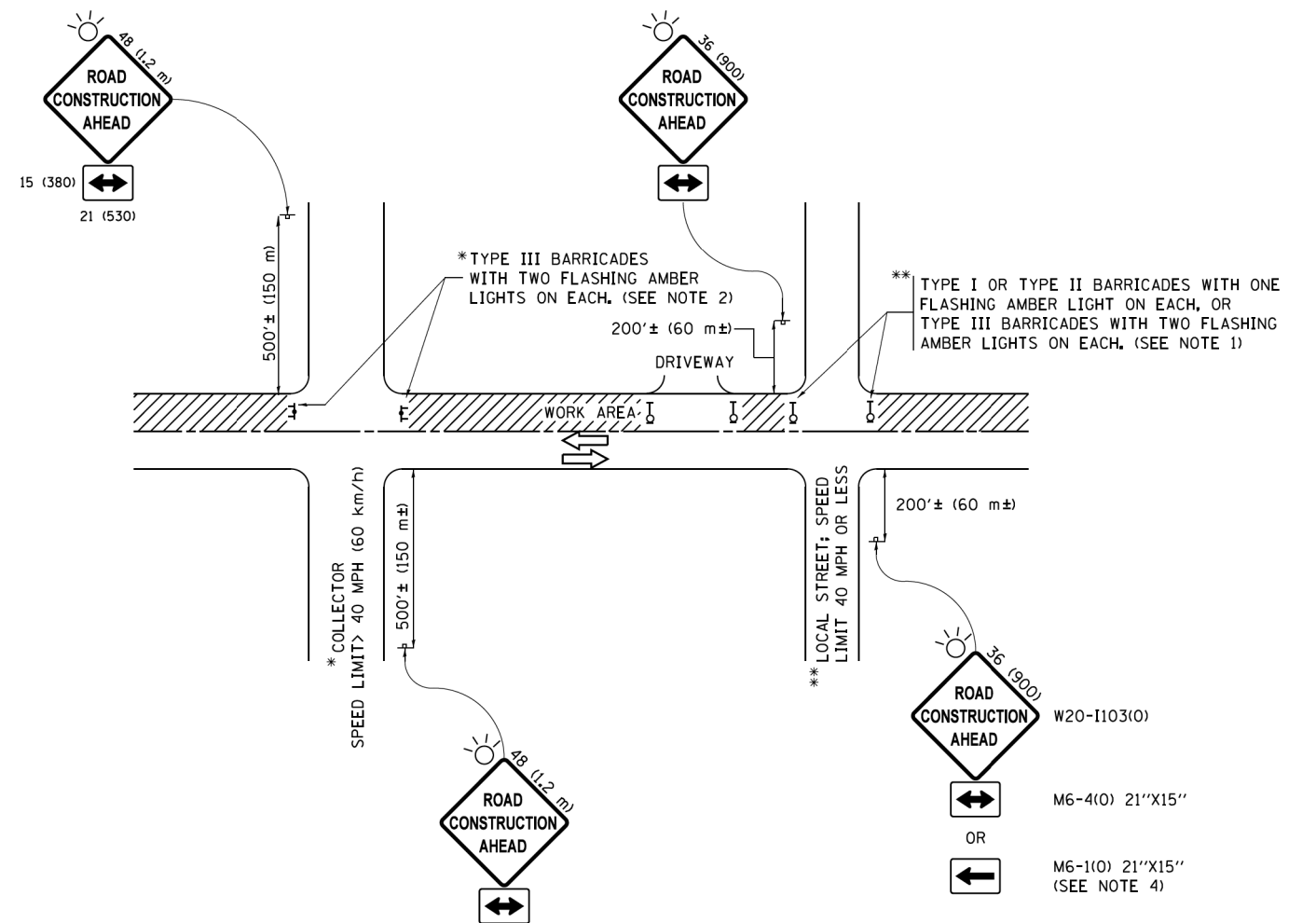
DESIGNED - M. DE YONG  
DRAWN -  
CHECKED -  
DATE - 06-13-90

REVISED - R. SHAH 10-25-94  
REVISED - A. ABBAS 03-21-97  
REVISED - M. GOMEZ 04-06-01  
REVISED - R. BORO 01-01-07

**STATE OF ILLINOIS  
DEPARTMENT OF TRANSPORTATION**

**BUTT JOINT AND  
HMA TAPER DETAILS**  
SCALE: NONE SHEET NO. 1 OF 1 SHEETS STA. TO STA.

F.A.U. RTE.	SECTION	COUNTY	TOTAL SHEETS	SHEET NO.
3569 1472	16-00083-00-RS	COOK	17	14
<b>BD400-05 BD32</b>		<b>CONTRACT NO. 61E90</b>		
FED. ROAD DIST. NO. 1 ILLINOIS FED. AID PROJECT				



**NOTES:**

1. SIDE ROAD WITH A SPEED LIMIT OF 40 MPH (60 km/h) OR LESS AS SHOWN ON THE DRAWING AND AS DIRECTED BY THE ENGINEER:
  - a) ONE "ROAD CONSTRUCTION AHEAD" SIGN 36 x 36 (900x900) WITH A FLASHER MOUNTED ON IT APPROXIMATELY 200' (60 m) IN ADVANCE OF THE MAIN ROUTE.
  - b) THE CLOSED PORTION OF THE MAIN ROUTE SHALL BE PROTECTED BY BLOCKING WITH TYPE I, TYPE II OR TYPE III BARRICADES, 1/3 OF THE CROSS SECTION OF THE CLOSED PORTION.
2. SIDE ROAD WITH A SPEED LIMIT GREATER THAN 40 MPH (60 km/h) AS SHOWN ON THE DRAWING AND AS DIRECTED BY THE ENGINEER:
  - a) ONE "ROAD CONSTRUCTION AHEAD" SIGN 48 x 48 (1.2 m x 1.2 m) WITH A FLASHER MOUNTED ON IT APPROXIMATELY 500' (150 m) IN ADVANCE OF THE MAIN ROUTE.
  - b) THE CLOSED PORTION OF THE MAIN ROUTE SHALL BE PROTECTED BY BLOCKING WITH TYPE III BARRICADES, 1/2 OF THE CROSS SECTION OF THE CLOSED PORTION.
3. CONES MAY BE SUBSTITUTED FOR BARRICADES OR DRUMS AT HALF THE SPACING DURING DAY OPERATIONS. CONES SHALL BE A MINIMUM OF 28 (710) IN HEIGHT.
4. WHEN THE SIDE ROAD LIES BETWEEN THE BEGINNING OF THE MAINLINE SIGNING AND THE WORK ZONE, A SINGLE HEADED ARROW (M6-1) SHALL BE USED IN LIEU OF THE DOUBLE HEADED ARROW (M6-4).
5. WHEN WORK IS BEING PERFORMED ON A SIDE ROAD OR DRIVEWAY, FOLLOW THE APPLICABLE STANDARD(S). THE DIRECTIONAL ARROW (M6-1 OR M6-4) SHALL BE COVERED OR REMOVED WHEN NO LONGER CONSISTENT WITH THE TRAFFIC CONTROL SET-UP.
6. ADVANCE WARNING SIGNS ARE TO BE OMITTED ON DRIVEWAYS UNLESS OTHERWISE SPECIFIED IN THE PLANS OR BY THE ENGINEER.
7. THE TRAFFIC CONTROL AND PROTECTION FOR SIDE ROADS, INTERSECTIONS, AND DRIVEWAYS SHALL BE INCLUDED IN THE COST OF SPECIFIED TRAFFIC CONTROL STANDARDS OR ITEMS.

All dimensions are in inches (millimeters) unless otherwise shown.

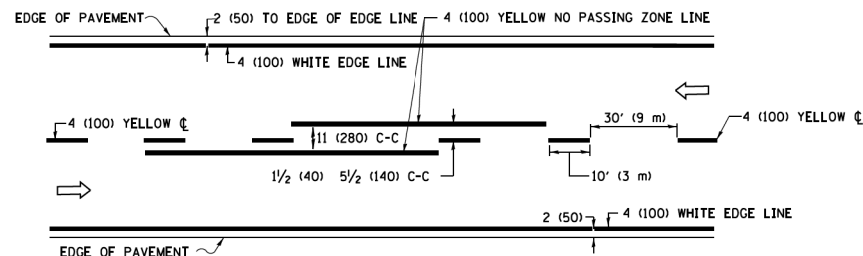
FILE NAME =	USER NAME = footemj	DESIGNED - L.H.A.	REVISED - A. HOUSEH 10-15-96
pw:\IL084EBIDINTEG\Illinois.gov\PIDOT\Documents\IDOT Offices\District 1\Projects\Dist	DRAWN\CADData\CADsheets\c10.dgn	CHECKED -	REVISED - T. RAMMACHER 01-06-00
Default	PLOT DATE = 9/15/2016	DATE - 06-89	REVISED - A. SCHUETZE 07-01-13
			REVISED - A. SCHUETZE 09-15-16

**STATE OF ILLINOIS  
DEPARTMENT OF TRANSPORTATION**

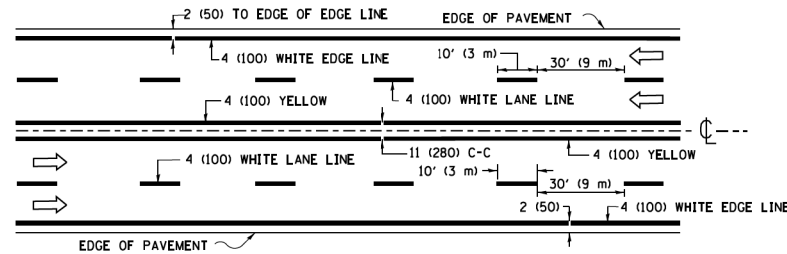
**TRAFFIC CONTROL AND PROTECTION FOR  
SIDE ROADS, INTERSECTIONS, AND DRIVEWAYS**

SCALE: NONE SHEET 1 OF 1 SHEETS STA. TO STA.

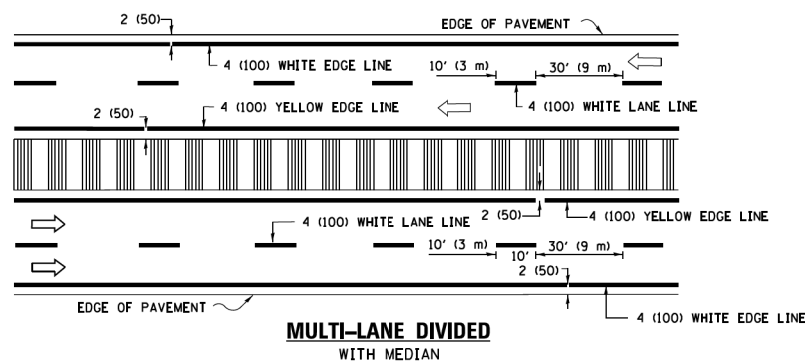
F.A.U. RTE.	SECTION	COUNTY	TOTAL SHEETS	SHEET NO.
3569 1472	16-00083-00-RS	COOK	17	15
<b>TC-10</b>		CONTRACT NO. 61E90		
ILLINOIS FED. AID PROJECT				



**2-LANE ROADWAY**

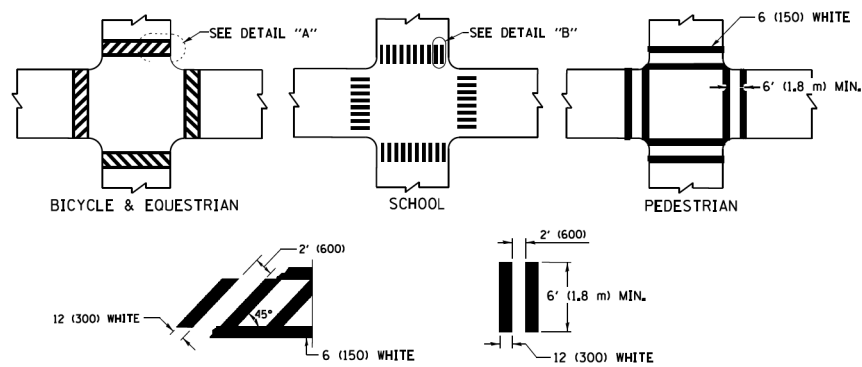


**MULTI-LANE UNDIVIDED**



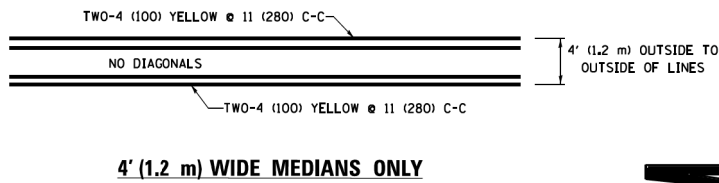
**MULTI-LANE DIVIDED WITH MEDIAN**

**TYPICAL LANE AND EDGE LINE MARKING**

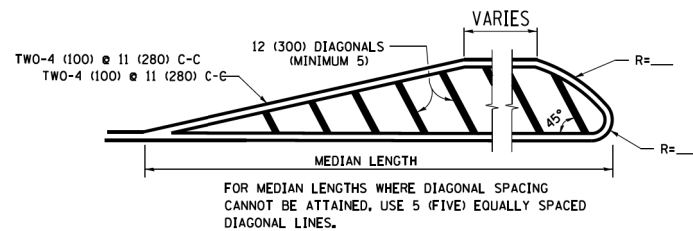


**DETAIL "A" TYPICAL CROSSWALK MARKING**

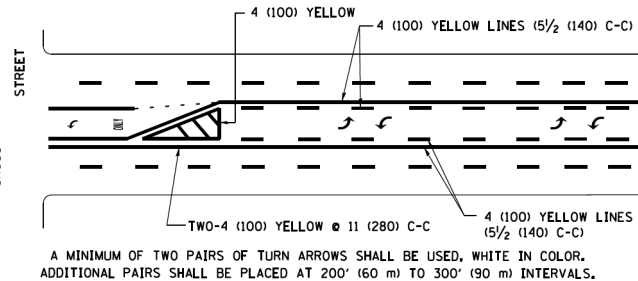
\* MARKINGS SHALL BE INSTALLED PARALLEL TO THE CENTERLINE OF THE ROAD WHICH IT CROSSES



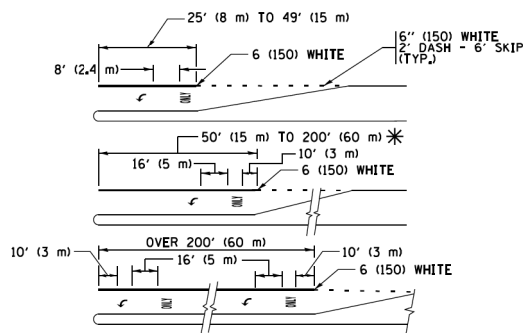
**4' (1.2 m) WIDE MEDIANS ONLY**



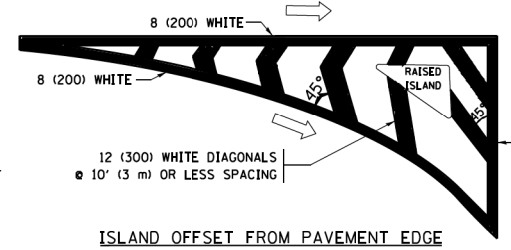
**MEDIANS OVER 4' (1.2 m) WIDE**



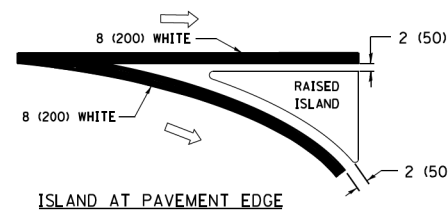
**MEDIAN WITH TWO-WAY LEFT TURN LANE TYPICAL PAINTED MEDIAN MARKING**



**TYPICAL LEFT (OR RIGHT) TURN LANE TYPICAL TURN LANE MARKING**

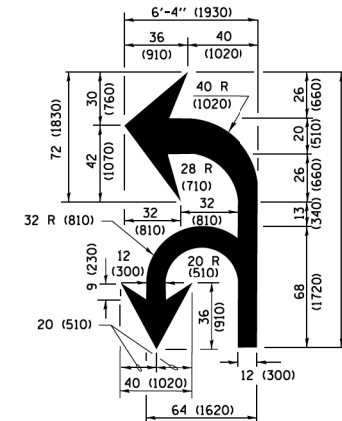


**ISLAND OFFSET FROM PAVEMENT EDGE**

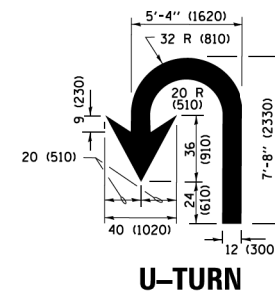


**ISLAND AT PAVEMENT EDGE**

**TYPICAL ISLAND MARKING**



**COMBINATION LEFT AND U-TURN**



**U-TURN**

**LANE REDUCTION TRANSITION**

\* LANE REDUCTION ARROWS REQUIRED AT SPEEDS OF 45 MPH OR GREATER OR WHEN SPECIFIED IN PLANS.

D(FT)	SPEED LIMIT
345	30
425	35
500	40
580	45
665	50
750	55

TYPE OF MARKING	WIDTH OF LINE	PATTERN	COLOR	SPACING /REMARKS
CENTERLINE ON 2 LANE PAVEMENT	4 (100)	SKIP-DASH	YELLOW	10' (3 m) LINE WITH 30' (9 m) SPACE
CENTERLINE ON MULTI-LANE UNDIVIDED PAVEMENT	2 @ 4 (100)	SOLID	YELLOW	11 (280) C-C
NO PASSING ZONE LINES FOR ONE DIRECTION FOR BOTH DIRECTIONS	4 (100) 2 @ 4 (100)	SOLID SOLID	YELLOW YELLOW	5/2 (140) C-C FROM SKIP-DASH CENTERLINE 11 (280) C-C OMIT SKIP-DASH CENTERLINE BETWEEN
LANE LINES	4 (100) 5 (125) ON FREEWAYS	SKIP-DASH SKIP-DASH	WHITE WHITE	10' (3 m) LINE WITH 30' (9 m) SPACE
DOTTED LINES (EXTENSIONS OF CENTER, LANE OR TURN LANE MARKINGS)	SAME AS LINE BEING EXTENDED	SKIP-DASH	SAME AS LINE BEING EXTENDED	2' (600) LINE WITH 6' (1.8 m) SPACE
EDGE LINES	4 (100)	SOLID	YELLOW-LEFT WHITE-RIGHT	OUTLINE MEDIANS IN YELLOW
TURN LANE MARKINGS	6 (150) LINE; FULL SIZE LETTERS & SYMBOLS (8' (2.4m))	SOLID	WHITE	SEE TYPICAL TURN LANE MARKING DETAIL
TWO WAY LEFT TURN MARKING	2 @ 4 (100) EACH DIRECTION 8' (2.4m) LEFT ARROW	SKIP-DASH AND SOLID IN PAIRS	YELLOW WHITE	10' (3 m) LINE WITH 30' (9 m) SPACE FOR SKIP-DASH; 5/2 (140) C-C BETWEEN SOLID LINE AND SKIP-DASH LINE SEE TYPICAL TWO-WAY LEFT TURN MARKING DETAIL
CROSSWALK LINES (PEDESTRIAN) A. DIAGONALS (BIKE & EQUESTRIAN) B. LONGITUDINAL BARS (SCHOOL)	2 @ 6 (150) 12 (300) @ 45° 12 (300) @ 90°	SOLID SOLID SOLID	WHITE WHITE WHITE	NOT LESS THAN 6' (1.8 m) APART 2' (600) APART SEE TYPICAL CROSSWALK MARKING DETAILS.
STOP LINES	24 (600)	SOLID	WHITE	PLACE 4' (1.2 m) IN ADVANCE OF AND PARALLEL TO CROSSWALK, IF PRESENT, OTHERWISE, PLACE AT DESIRED STOPPING POINT, PARALLEL TO CROSSROAD CENTERLINE, WHERE POSSIBLE
PAINTED MEDIANS	2 @ 4 (100) WITH 12 (300) DIAGONALS @ 45° NO DIAGONALS USED FOR 4' (1.2 m) WIDE MEDIANS	SOLID	YELLOW; TWO WAY TRAFFIC WHITE; ONE WAY TRAFFIC	11 (280) C-C FOR THE DOUBLE LINE SEE TYPICAL PAINTED MEDIAN MARKING.
GORE MARKING AND CHANNELIZING LINES	8 (200) WITH 12 (300) DIAGONALS @ 45°	SOLID	WHITE	DIAGONALS 15' (4.5 m) C-C (LESS THAN 30MPH (50 km/h)) 20' (6 m) C-C (30MPH (50 km/h) TO 45MPH (70 km/h)) 30' (9 m) C-C (OVER 45MPH (70 km/h))
RAILROAD CROSSING	24 (600) TRANSVERSE LINES; "RR" IS 6' (1.8 m) LETTERS; 16 (400) LINE FOR "X"	SOLID	WHITE	SEE STATE STANDARD 780001 AREA OF "R"=3.6 SQ. FT. (0.33 m <sup>2</sup> ) EACH "X"=54.0 SQ. FT. (5.0 m <sup>2</sup> )
SHOULDER DIAGONALS (REQUIRED FOR SHOULDERS ≥ 8')	12 (300) @ 45°	SOLID	WHITE - RIGHT YELLOW - LEFT	50' (15 m) C-C (LESS THAN 30MPH (50 km/h)) 75' (25 m) C-C (30 MPH (50 km/h) TO 45MPH (70 km/h)) 150' (45 m) C-C (OVER 45MPH (70 km/h))
U TURN ARROW	SEE DETAIL	SOLID	WHITE	16.3 SF
2 ARROW COMBINATION LEFT AND U TURN	SEE DETAIL	SOLID	WHITE	30.4 SF

FOR FURTHER DETAILS ON PAVEMENT MARKING REFER TO STANDARD SPECIFICATIONS FOR ROAD AND BRIDGE CONSTRUCTION AND STATE STANDARD 780001.

All dimensions are in inches (millimeters) unless otherwise shown.

FILE NAME = W:\dststd\22x34\to13.dgn	USER NAME = lsgsa	DESIGNED - EVERS	REVISED - C. JUCIUS 09-09-09
Default	PLOT SCALE = 50,000' / 1" = 1'	DRAWN -	REVISED - C. JUCIUS 07-01-13
	PLOT DATE = 6/23/2017	CHECKED -	REVISED - C. JUCIUS 12-21-15
		DATE - 03-19-90	REVISED - C. JUCIUS 04-12-16

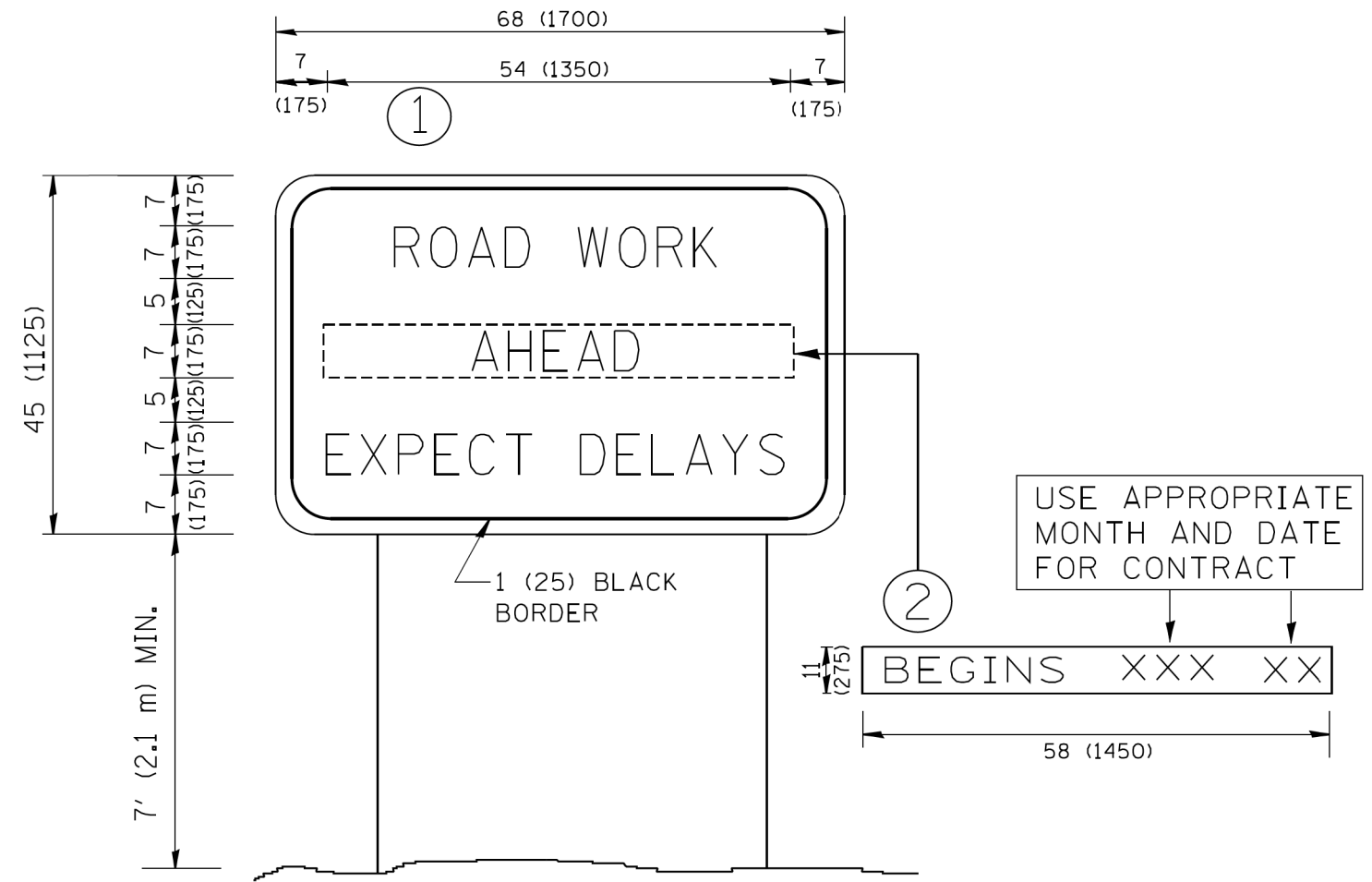
**STATE OF ILLINOIS DEPARTMENT OF TRANSPORTATION**

**DISTRICT ONE TYPICAL PAVEMENT MARKINGS**

SCALE: NONE SHEET 1 OF 1 SHEETS STA. TO STA.

F.A.U. RTE. 1472	SECTION 16-00083-00-RS	COUNTY COOK	TOTAL SHEETS 17	SHEET NO. 16
TC-13		CONTRACT NO. 61E90		ILLINOIS FED. AID PROJECT





**NOTES:**

1. USE BLACK LETTERING ON ORANGE BACKGROUND.
2. ERECT SIGNS IN ADVANCE OF THE LOCATION FOR THE "ROAD CONSTRUCTION AHEAD" SIGN AT LOCATIONS AS DIRECTED BY THE ENGINEER.
3. ERECT SIGN ① WITH INSTALLED PANEL ② ONE WEEK PRIOR TO THE START OF CONSTRUCTION.
4. REMOVE PANEL ② SOON AFTER THE START OF CONSTRUCTION.
5. SEE SPECIAL PROVISION FOR "TEMPORARY INFORMATION SIGNING" FOR ADDITIONAL INFORMATION.
6. ONE SIGN ASSEMBLY EQUALS 25.70 SQ. FT. (2.3 SQ. M.)
7. SHALL BE PAID FOR AS TEMPORARY INFORMATION SIGNING.

ALL DIMENSIONS ARE IN INCHES (MILLIMETERS) UNLESS OTHERWISE SHOWN.

FILE NAME = W:\diststd\22x34\to22.dgn	USER NAME = geglienobt	DESIGNED - DRAWN -	REVISED - R. MIRS 09-15-97 REVISED - R. MIRS 12-11-97	<b>STATE OF ILLINOIS DEPARTMENT OF TRANSPORTATION</b>	<b>ARTERIAL ROAD INFORMATION SIGN</b>		F.A.U. RTE. 3569 1472	SECTION 16-00083-00-RS	COUNTY COOK	TOTAL SHEETS 17	SHEET NO. 17
PLOT SCALE = 50,000' / IN.	CHECKED -	REVISED - T. RAMMACHER 02-02-99	REVISED - C. JUCIUS 01-31-07		SCALE: NONE	SHEET NO. 1 OF 1 SHEETS	STA.	TO STA.	<b>TC-22</b>		CONTRACT NO. 61E90
PLOT DATE = 1/4/2008	DATE -				FED. ROAD DIST. NO. 1   ILLINOIS   FED. AID PROJECT						