

GENERAL NOTES

- ALL CONSTRUCTION SHALL BE IN CONFORMANCE WITH THE APPLICABLE REQUIREMENT SET FORTH IN "THE STANDARD SPECIFICATIONS FOR ROAD AND BRIDGE CONSTRUCTION" ADOPTED APRIL 1, 2016 THEREINAFTER REFERRED TO AS STANDARD SPECIFICATIONS, THE LATEST EDITION OF THE "ILLINOIS MANUAL ON UNIFORM MANUAL TRAFFIC CONTROL DEVICES FOR STREETS AND HIGHWAYS" IN EFFECT ON THE DATE OF INVITATION FOR BIDS; THE "SUPPLEMENTAL SPECIFICATIONS AND RECURRING SPECIAL PROVISIONS" LATEST EDITION; INTERIM SPECIAL PROVISIONS AS INCLUDED IN THE CONTRACT DOCUMENTS; AND THE DETAILS AND STANDARDS CONTAINED IN THESE PLANS.
- BEFORE STARTING ANY EXCAVATIONS, THE CONTRACTOR SHALL CALL "JULIE" AT 1-800-892-0123 FOR FIELD LOCATIONS OF BURIED ELECTRIC, TELEPHONE AND GAS FACILITIES. (48 HOUR NOTIFICATION IS REQUIRED)
- THE LOCATIONS OF THE EXISTING UTILITIES, AS SHOWN ON THE DRAWINGS, REPRESENT DATA RECEIVED FROM VARIOUS SOURCES, IT IS NOT GUARANTEED TO BE CORRECT OR ALL INCLUSIVE. THE CONTRACTOR SHALL CONDUCT HIS OWN INVESTIGATIONS INTO THE LOCATION, SIZE, DEPTH, AND NATURE OF ANY AND ALL EXISTING UTILITIES WHICH MAY INTERFERE WITH THE WORK UNDER THIS CONTRACT. ANY EXISTING UTILITIES WHICH ARE TO REMAIN IN SERVICE SHALL BE FULLY PROTECTED BY THE CONTRACTOR AND ANY DAMAGE CAUSED BY THE CONSTRUCTION SHALL BE IMMEDIATELY REPAIRED IN ACCORDANCE WITH ARTICLE 105.07.
- THE CONTRACTOR SHALL COORDINATE CONSTRUCTION ACTIVITIES WITH UTILITY COMPANIES.
- ALL WORK SHALL BE COMPLETED WITHIN THE LIMITS OF THE PROJECT SHOWN. NO EQUIPMENT, MATERIAL YARD OR FIELD OFFICE SHALL BE SET UP OR STORED ON TOWNSHIP OR PRIVATE PROPERTY WITHOUT WRITTEN PERMISSION OF THE ENGINEER.
- MAINTENANCE OF TRAFFIC - GENERAL: TRAFFIC CONDITIONS, ACCIDENTS AND OTHER UNFORESEEN EMERGENCY CONDITIONS MAY REQUIRE THE ENGINEER TO RESTRICT, MODIFY OR REMOVE LANE CLOSURES OR CHANNELIZATION SHOWN IN THE PLANS. THE CONTRACTOR SHALL RESPOND WITHIN 30 MINUTES OF THE TIME OF NOTIFICATION BY THE ENGINEER FOR THE MAINTENANCE OF TRAFFIC CONTROL DEVICES.

DRAINAGE NOTES

- DURING CONSTRUCTION OPERATIONS ALL LOOSE MATERIAL DEPOSITED IN THE FLOW LINE OF DRAINAGE STRUCTURES AND TEMPORARY DITCHES THAT OBSTRUCTS THE NATURAL FLOW OF WATER SHALL BE REMOVED AT THE CLOSE OF EACH WORKING DAY. AT THE CONCLUSION OF THE CONSTRUCTION OPERATIONS, ALL DRAINAGE STRUCTURES SHALL BE CLEANED AS NECESSARY TO INSURE THAT THEY ARE FREE FROM ALL DIRT AND DEBRIS PRIOR TO THE FINAL INSPECTION OF THE PROJECT.

- ANY FARM DRAIN, FIELD TILE SYSTEM OR OTHER UNDERGROUND TILE FACILITY ENCOUNTERED IN THE WORK AREA SHALL BE LOCATED AND STAKED AND REPORTED TO THE ENGINEER. ANY DRAINAGE LINES WHICH ARE CUT OR DAMAGED BY GRADING, TRENCHING, EXCAVATION OR OTHER CONSTRUCTION ACTIVITIES SHALL BE REPAIRED SO AS TO MAINTAIN ITS ORIGINAL ALIGNMENT. IF THIS CANNOT BE ACCOMPLISHED, THE TILE SHALL BE REPAIRED AND CONNECTED TO THE PROPOSED STORM SEWER SYSTEM IN SUCH A MANNER AS TO RENDER THE LINES USABLE FOR THE PURPOSES INTENDED.

THE WORK SHALL BE DONE IN ACCORDANCE WITH SECTION 611. THE MINIMUM SIZE FOR REPLACEMENT MUST BE 12 INCH AND SHALL BE PAID FOR AS "PIPE DRAINS" OF THE DIAMETER SPECIFIED. THE DRAIN PIPE MATERIAL SHALL BE PVC OR CORRUGATED PVC WITH A SMOOTH INTERIOR IN ACCORDANCE WITH SECTION 601. A TYPE A INLET W/ TYPE 1 CLOSED LID WILL BE CONSTRUCTED TO CONNECT THE TILE(S) AND/OR PIPE DRAIN. A NOMINAL QUANTITY OF 12" PIPE AND TYPE A INLETS HAVE BEEN INCLUDED IN THE PLAN QUANTITIES.

PRIOR TO MAKING THE CONNECTION THE CONTRACTOR SHALL CLEAN THE ENDS OF THE TILE TO BE CONNECTED. IN ACCORDANCE WITH SECTION 611 OF THE STANDARD SPECIFICATION THE EXISTING TILE SHALL BE REMOVED AND TRENCH BACKFILL MATERIAL SHALL BE PLACED IN THE TRENCH LEFT BY THE REMOVAL.

- MORTAR:
ALL CONNECTION POINTS WHERE THE DRAIN TILE OR STORM SEWER ENTERS THE DRAINAGE STRUCTURE SHALL BE MORTARED ON THE INSIDE AND OUTSIDE OF THE DRAINAGE STRUCTURE. THE MORTAR MATERIAL SHALL BE PLACED AROUND THE ENTIRE CIRCUMFERENCE OF THE PIPE. THE MORTAR MATERIAL SHALL BE IN ACCORDANCE WITH SECTION 602.04.

KANE-DUPAGE SOIL & WATER CONSERVATION DISTRICT

- THE CONTRACTOR AND ENGINEER SHALL MEET WITH THE KANE-DUPAGE SOIL & WATER CONSERVATION DISTRICT TO COORDINATE ALL IN-STREAM WORK ACTIVITIES.
- THE CONTRACTOR'S IN-STREAM WORK PLAN SHALL BE SUBMITTED TO THE SOIL & WATER CONSERVATION DISTRICT AND KANE COUNTY FOR REVIEW AND APPROVAL PRIOR TO STARTING ANY WORK.
- SEE EROSION CONTROL PLAN SHEETS FOR ADDITIONAL DETAILS, CONDITIONS AND NOTES.

TREES AND SHRUBS

- THE CONTRACTOR SHALL REMOVE ONLY THOSE TREES AND SHRUBS AS SHOWN ON THE PLANS OR AS DIRECTED BY THE ENGINEER, OR THOSE, WHICH DIRECTLY INTERFERE WITH THE SAFETY OR QUALITY OF CONSTRUCTION PRACTICES. THE CONTRACTOR SHALL EXERCISE EXTREME CARE WHEN WORKING NEAR EXISTING TREES AND SHRUBS TO AVOID DAMAGING THOSE NOT SCHEDULED FOR REMOVAL AND SHALL REPLACE IN-KIND ANY DAMAGED PLANTS.

EARTHWORK AND ROADWAY

- THE CONTRACTOR WILL NOT BE ALLOWED TO STOCK PILE MATERIAL(S) BEYOND THE PROJECT LIMITS. THE CONTRACTOR WILL NOT PLACE STOCK PILES IN LOCATIONS WHERE THEY WILL BLOCK DRAINAGE WAYS OR ON PAVEMENTS THAT ARE NOT SPECIFIED FOR REMOVAL. ANY DAMAGE REQUIRING REPAIR CAUSED BY THE CONTRACTORS STOCK PILING OR CONSTRUCTION OPERATIONS WILL BE DONE BY THE CONTRACTOR. STOCK PILE AREAS SHALL BE COORDINATED WITH THE ENGINEER.
- GEOTECHNICAL FABRIC FOR GROUND STABILIZATION:
ITEM NO. 21001000 GEOTECHNICAL FABRIC FOR GROUND STABILIZATION WILL ONLY BE UTILIZED IN AREAS THAT HAVE BEEN IDENTIFIED AS SUBGRADE UNDERCUTS AREAS OR WHERE DETERMINED IN THE FIELD BY A GEOTECHNICAL ENGINEER. THE FABRIC WILL BE USED IN COMBINATION WITH AGGREGATE SUBGRADE IMPROVEMENT. THE QUANTITY INCLUDED IN THE PLANS IS BASED ON THE SUBSURFACE INVESTIGATION PREPARED BY TESTING SERVICE CORPORATION RECOMMENDATIONS FOR UNDERCUT AREAS.
- ALL EXCAVATION AND EMBANKMENT LOCATIONS REQUIRING SEEDING OR SODDING SHALL BE CONSTRUCTED TO 6 INCHES BELOW FINISHED GRADE LINE TO ALLOW TOPSOIL PLACEMENT.
- PAVEMENT ELEVATIONS: THE ELEVATIONS SHOWN ON THE PLANS ARE FINISHED GRADES FOR THE PROPOSED PAVEMENT OR SURFACE COURSE, UNLESS OTHERWISE INDICATED.

REMOVAL NOTES

- SAW CUTS:
ALL LOCATIONS WHERE A SAW CUT IS REQUIRED FOR THE REMOVAL OF PAVEMENT, CURB, GUTTER, MEDIANS, DRIVEWAYS, SIDEWALK, BUTT JOINTS, PATCHES OR ANY OTHER STRUCTURE WHICH ARE ALL ONE PIECE WITH NO CONSTRUCTION JOINTS. THIS SAW CUT SHALL BE MADE AT THE LIMITS OF CONSTRUCTION OR OTHER AREAS AS REQUIRED TO PERFORM THE PROPOSED IMPROVEMENTS SHOWN ON THE PLANS. THE SAW CUT SHALL BE ACCOMPLISHED WITH A "PAVEMENT SAW", TRENCHERS WILL NOT BE ALLOWED FOR FINAL SAW CUT AT THE LIMITS OF CONSTRUCTION, UNLESS OTHERWISE NOTED IN THE PLANS.

DEMOLITION PLAN

- INDIAN CREEK IS CONSIDERED WATERS OF THE U.S. OR "PUBLIC WATERS". THE CONTRACTOR WILL BE REQUIRED TO SUBMIT A DEMOLITION PLAN IN ACCORDANCE WITH ARTICLE 501.02 TO THE ENGINEER FOR APPROVAL.

SUMMARY OF COMMITMENTS

- THE AURORA TOWNSHIP AND KANE COUNTY SHALL RELEASE A PUBLIC NOTICE ON THE WEBSITE IN ADVANCE OF THE ROAD CLOSURE.
- ENGINEER SHALL COORDINATE WITH THE CITY OF AURORA TO ENSURE ROADWAY CLOSURE SIGNAGE DOES NOT CONFLICT WITH FARNSWORTH BRIDGE RECONSTRUCTION.

SURVEY DATUM

THE HORIZONTAL DATUM IS NAD 83 AND THE VERTICAL DATUM IS NAVD 88.

INDEX OF SHEETS

SHEET NO.	DESCRIPTION
1	COVER SHEET
2	GENERAL NOTES, INDEX OF SHEETS & STANDARDS
3-5	SUMMARY OF QUANTITIES
6-7	TYPICAL SECTIONS
8-9	SCHEDULE OF QUANTITIES
10	ALIGNMENT, TIES & BENCHMARKS
11	REMOVAL PLAN
12	PLAN & PROFILE
13-14	MAINTENANCE OF TRAFFIC - ROAD CLOSURE PLAN
15	EROSION CONTROL & SEEDING PLAN
16-18	EROSION CONTROL & SEEDING NOTES & DETAILS
19	DRAINAGE PLAN & PROFILE
20	CHANNEL GRADING PLAN
21	PAVEMENT MARKING & SIGNING PLAN
22-45	STRUCTURAL PLANS
46-49	DISTRICT 1 DETAILS
50-53	CROSS SECTIONS - CHANNEL
54-58	CROSS SECTIONS - RURAL STREET

HIGHWAY STANDARDS

STANDARD NO.	DESCRIPTION
000001-07	STANDARD SYMBOLS, ABBREVIATIONS AND PATTERNS
001001-02	AREAS OF REINFORCEMENT BARS
280001-07	TEMPORARY EROSION CONTROL SYSTEMS
420406	PAVEMENT CONNECTOR (HMA) FOR BRIDGE APPROACH SLAB
482001-02	HMA SHOULDER ADJACENT TO FLEXIBLE PAVEMENT
515001-03	NAME PLATE FOR BRIDGES
542301-03	METAL FLARED END SECTION FOR PIPE CULVERTS
601001-05	PIPE UNDERDRAINS
601101-02	CONCRETE HEADWALL FOR PIPE DRAIN
602011-02	CATCH BASIN TYPE C
602301-04	INLET, TYPE A
602306.03	INLET, TYPE B
604001-04	FRAME AND LIDS, TYPE 1
604036-03	GRATE TYPE B
630001-12	STEEL PLATE BEAM GUARDRAIL
630201-07	PCC/HMA STABILIZATION AT STEEL PLATE BEAM GUARDRAIL
630301-09	SHOULDER WIDENING FOR TYPE 1 (SPECIAL) GUARDRAIL TERMINALS
631032-09	TRAFFIC BARRIER TERMINAL, TYPE 6A
641006-01	SIGHT SCREEN WOOD PLANK FENCE TYPE P
701001-02	OFF-RD OPERATION 2L, 2W, MORE THAN 15' AWAY
701006-05	OFF-RD OPERATION 2L, 2W, 15' TO 24" FROM PAVEMENT EDGE
701011-04	OFF-RD MOVING OPERATIONS, 2L, 2W, DAY ONLY
701311-03	LANE CLOSURE, 2L, 2W, MOVING OPERATIONS - DAY ONLY
701501-06	URBAN LANE CLOSURE, 2L, 2W, UNDIVIDED
701901-08	TRAFFIC CONTROL DEVICES
782006	GUARDRAIL AND BARRIER WALL REFLECTOR MOUNTING DETAILS
BLR 27-1	TRAFFIC BARRIER TERMINAL TYPE 5A

DISTRICT STANDARDS

STANDARD NO.	DESCRIPTION
BD-01	DRIVEWAY DETAILS - DISTANCE BETWEEN R.O.W. AND FACE OF CURB & EDGE OF SHOULDER >= 15'
TC-10	TRAFFIC CONTROL AND PROTECTION FOR SIDE ROADS, INTERSECTIONS, AND DRIVEWAYS
TC-13	DISTRICT ONE TYPICAL PAVEMENT MARKINGS
TC-22	ARTERIAL ROAD INFORMATION SIGN (DISTRICT 1)

I:\Projects\2018\18160285 - RuralStreetOverIndianCreek\Drawings\18160285-GRNOTES.dgn

WBK engineering
 WBK ENGINEERING, LLC
 116 WEST MAIN STREET, SUITE 201
 ST. CHARLES, ILLINOIS 60174
 (630) 443-7755

USER NAME = bpoktorff	DESIGNED - SBP	REVISED - 12/28/18
	DRAWN - NP	REVISED -
PLOT SCALE = 1:20	CHECKED - SBP/DB	REVISED -
PLOT DATE = 12/28/2018	DATE - 11/5/2018	REVISED -

STATE OF ILLINOIS
DEPARTMENT OF TRANSPORTATION

RURAL STREET OVER INDIAN CREEK
GENERAL NOTES, INDEX OF SHEETS & STANDARDS

T.R. RTE.	SECTION	COUNTY	TOTAL SHEETS	SHEET NO.
189	15-01127-01-BR	KANE	58	2
CONTRACT NO. 61F31				
ILLINOIS FED. AID PROJECT				

SCALE: SHEET 1 OF 1 SHEETS STA. TO STA.

SUMMARY OF QUANTITIES

SPECIALTY ITEM	SPECIAL PROVISION	CODE NO.	ITEM	UNIT	TOTAL QUANTITY	CONSTRUCTION CODE	
						80% FEDERAL 20% STATE	
						ROADWAY 0004 URBAN	BRIDGE 0010 URBAN
		50400305	PRECAST PRESTRESSED CONCRETE DECK BEAMS (17" DEPTH)	SQ FT	2,927		2,927
		50800205	REINFORCEMENT BARS, EPOXY COATED	POUND	36,570		36,570
*		50901050	STEEL RAILING, TYPE SM	FOOT	163		163
		51201600	FURNISHING STEEL PILES HP12 X 53	FOOT	834		834
		51202305	DRIVING PILES	FOOT	834		834
		51203600	TEST PILE STEEL HP12X53	EACH	4		4
		51204650	PILE SHOES	EACH	24		24
		51500100	NAME PLATES	EACH	1		1
		54262712	METAL FLARED END SECTIONS 12"	EACH	2	2	
		550B0050	STORM SEWERS, CLASS B, TYPE 1 12"	FOOT	139	139	
		59100100	GEOCOMPOSITE WALL DRAIN	SQ YD	34		34
		60100060	CONCRETE HEADWALLS FOR PIPE DRAINS	EACH	2	2	
		60100945	PIPE DRAINS 12"	FOOT	50	50	
		60207605	CATCH BASINS, TYPE C, TYPE 8 GRATE	EACH	1	1	
		60235300	INLETS, TYPE A, TYPE 1 FRAME, CLOSED LID	EACH	2	2	
		60236200	INLETS, TYPE A, TYPE 8 GRATE	EACH	1	1	
		60240215	INLETS, TYPE B, TYPE 1 FRAME, CLOSED LID	EACH	2	2	
		63100075	TRAFFIC BARRIER TERMINAL, TYPE 5A	EACH	2	2	
		63100167	TRAFFIC BARRIER TERMINAL, TYPE 1 (SPECIAL) TANGENT	EACH	2	2	
		67000500	ENGINEER'S FIELD OFFICE, TYPE B	CAL MO	4	4	
		67100100	MOBILIZATION	LSUM	1	1	
	S	70105025	CHANGEABLE MESSAGE SIGN	CAL DA	56	56	
*		72000100	SIGN PANEL - TYPE 1	SQ FT	6	6	
*		72400100	REMOVE SIGN PANEL ASSEMBLY - TYPE A	EACH	4	4	
*		72400500	RELOCATE SIGN PANEL ASSEMBLY - TYPE A	EACH	2	2	
*		72501000	TERMINAL MARKER- DIRECT APPLIED	EACH	2	2	
*		72800100	TELESCOPING STEEL SIGN SUPPORT	FOOT	30	30	
*		78009004	MODIFIED URETHANE PAVEMENT MARKING - LINE 4"	FOOT	1,288	1,288	
*		78200005	GUARDRAIL REFLECTORS, TYPE A	EACH	13	13	
	S	X0322584	REVTMENT MAT REMOVAL	SQ YD	320		320
	S	X0324079	EXISTING FIELD TILE REMOVAL	FOOT	50	50	
	S	X0326806	WASHOUT BASIN	LSUM	1	1	

I:\Projects\1501160285_RuralStOverIndianCreek\Drawings\160285-SQP-02.dgn

WBK engineering
 WBK ENGINEERING, LLC
 116 WEST MAIN STREET, SUITE 201
 ST. CHARLES, ILLINOIS 60174
 (630) 443-7755

USER NAME = bpottorff	DESIGNED - RMS	REVISED - 12/28/18
PLOT SCALE = 1:2	DRAWN - RMS	REVISED -
PLOT DATE = 12/28/2018	CHECKED - SBP	REVISED -
	DATE - 11/5/2018	REVISED -

**STATE OF ILLINOIS
DEPARTMENT OF TRANSPORTATION**

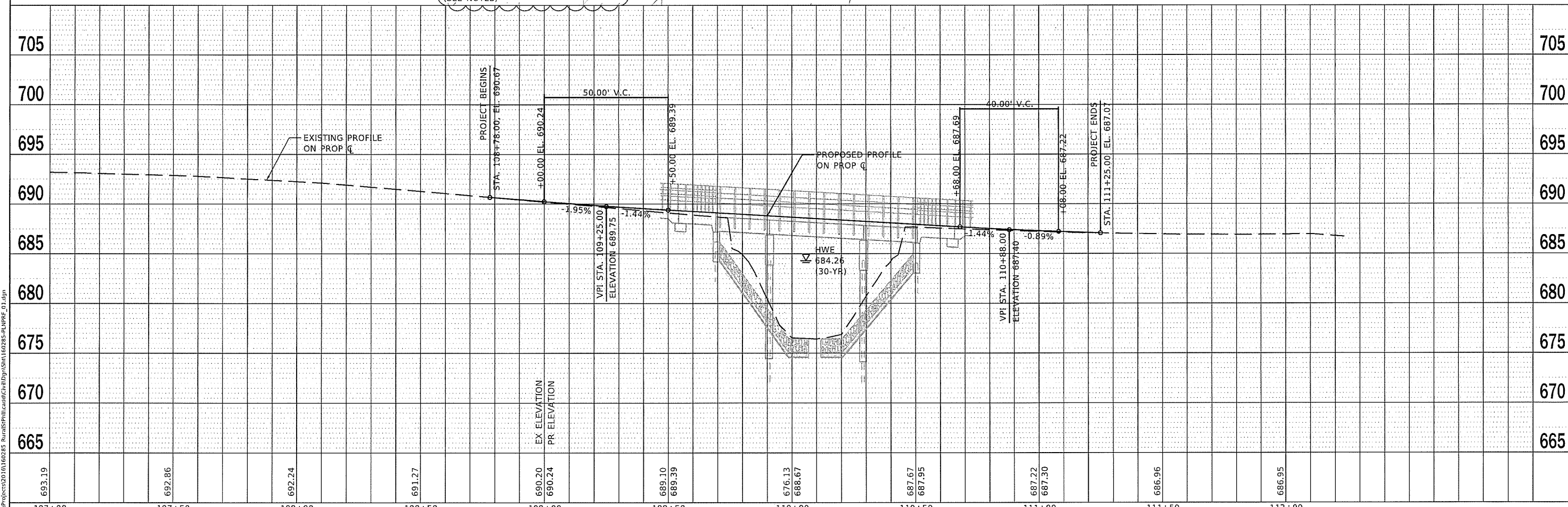
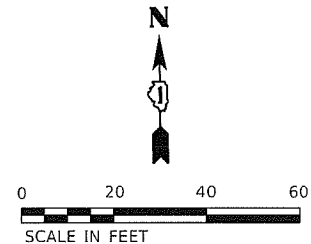
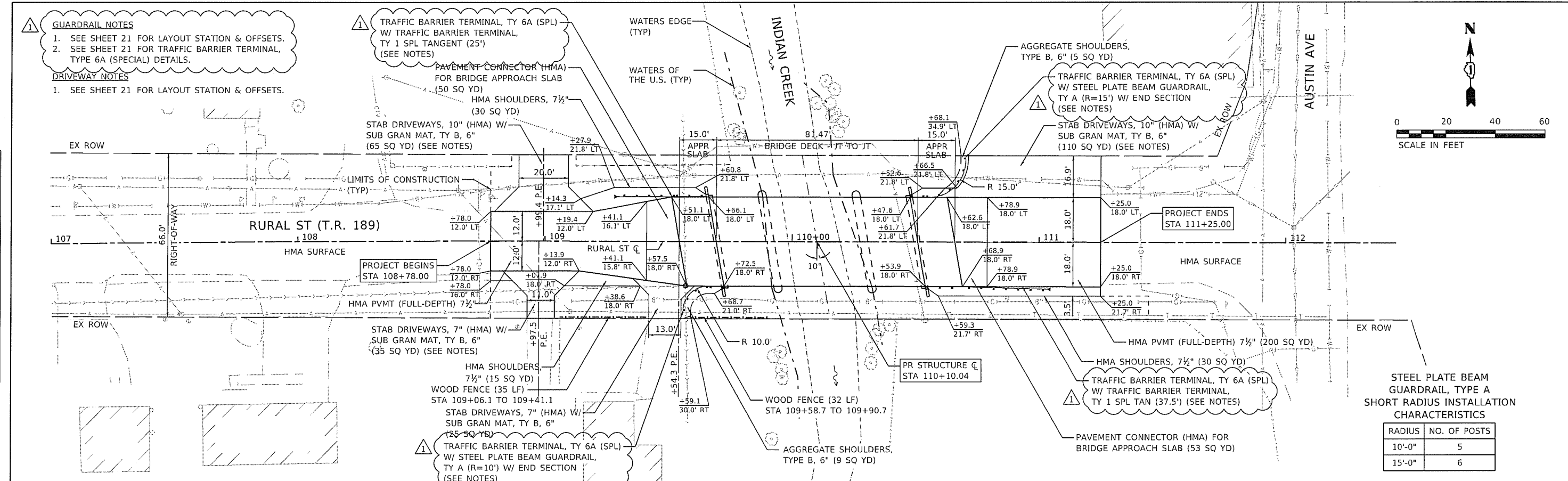
**RURAL STREET OVER INDIAN CREEK
SUMMARY OF QUANTITIES**

SCALE: SHEET 2 OF 3 SHEETS STA. TO STA.

T.R. RTE. 189	SECTION 15-01127-01-BR	COUNTY KANE	TOTAL SHEETS 58	SHEET NO. 4
ILLINOIS FED. AID PROJECT CONTRACT NO. 61F31				

PLAN	SURVEYED	DATE
	PLOTTED	
	CHECKED	
	BY	
	NO.	

PROFILE	SURVEYED	DATE
	PLOTTED	
	CHECKED	
	BY	
	NO.	



WBK engineering
 WBK ENGINEERING, LLC
 116 WEST MAIN STREET, SUITE 201
 ST. CHARLES, ILLINOIS 60174
 (630) 443-7755

USER NAME	= tpoltorff
DESIGNED	- RMS
REVIS	- 12/28/18
DRAWN	- RMS
CHECKED	- SBP/DB
REVIS	-
PLOT SCALE	= 1:40
DATE	= 11/5/2018
REVIS	-

**STATE OF ILLINOIS
 DEPARTMENT OF TRANSPORTATION**

**RURAL STREET OVER INDIAN CREEK
 PLAN & PROFILE**

SCALE: 1"=20' SHEET 1 OF 1 SHEETS STA. 108+78.00 TO STA. 111+25.00

T.R. RTE.	SECTION	COUNTY	TOTAL SHEETS	SHEET NO.
189	15-01127-01-BR	KANE	58	12
				CONTRACT NO. 61F31
ILLINOIS FED. AID PROJECT				

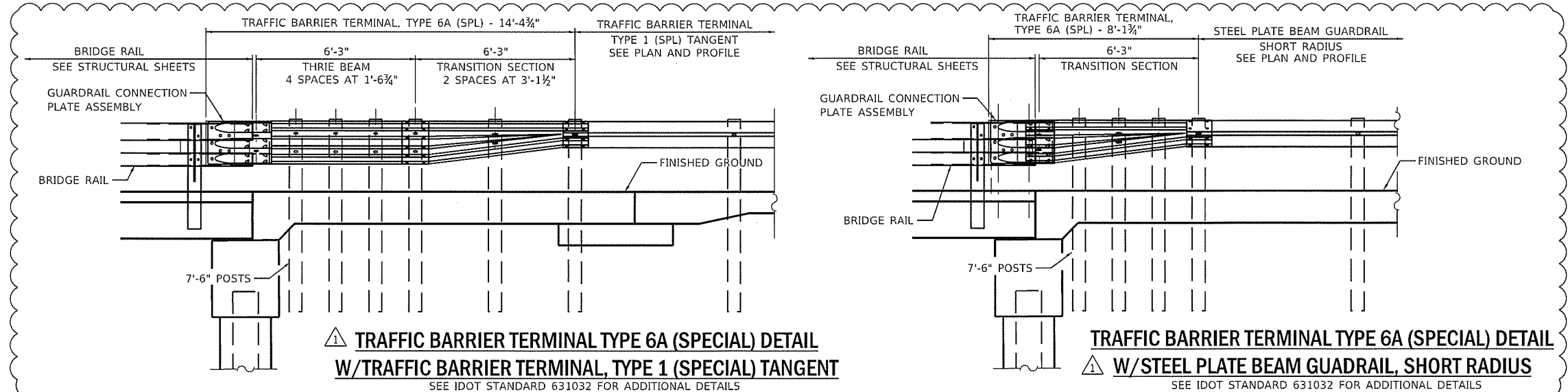
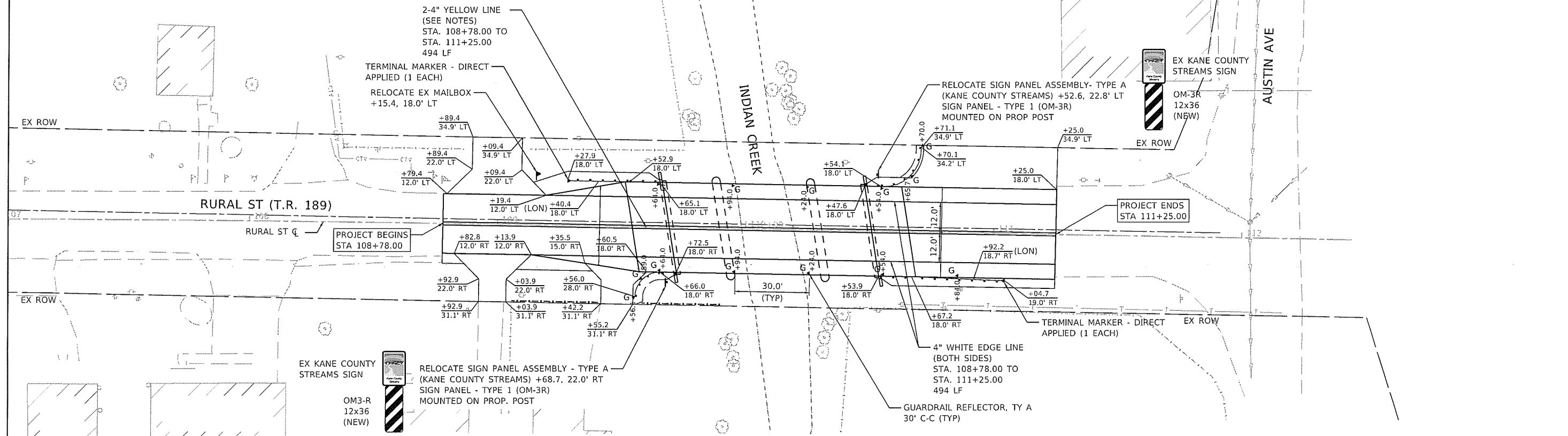
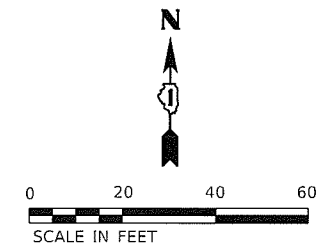
FILE NAME = W:\Projects\2018\160285_RuralStPlan\Drawings\160285-PLAN.PRF_01.dgn

NOTES

1. ALL PAVEMENT MARKINGS ON THE ROADWAY SURFACE SHALL BE MODIFIED URETHANE PAVEMENT MARKINGS.
2. ALL SIGNS, RELOCATED AND PROPOSED, SHALL BE MOUNTED ON A NEW TELESCOPING SIGN SUPPORT.
3. EXISTING SIGN POSTS SHALL BECOME THE PROPERTY OF THE CONTRACTOR AND BE DISPOSED OFF-SITE.

LEGEND

- GUARDRAIL REFLECTOR, TY A
- SIGN (PROP. OR RELOCATED) AS SPECIFIED
- MAILBOX (RELOCATED)



TRAFFIC BARRIER TERMINAL TYPE 6A (SPECIAL) DETAIL
W/TRAFFIC BARRIER TERMINAL, TYPE 1 (SPECIAL) TANGENT
 SEE IDOT STANDARD 631032 FOR ADDITIONAL DETAILS

TRAFFIC BARRIER TERMINAL TYPE 6A (SPECIAL) DETAIL
W/STEEL PLATE BEAM GUADRAIL, SHORT RADIUS
 SEE IDOT STANDARD 631032 FOR ADDITIONAL DETAILS

FILE NAME = W:\Projects\2018\160235 - Rural St\189\Drawings\160235-PMK_01.dgn

WBK engineering
 WBK ENGINEERING, LLC
 116 WEST MAIN STREET, SUITE 201
 ST. CHARLES, ILLINOIS 60174
 (630) 443-7755

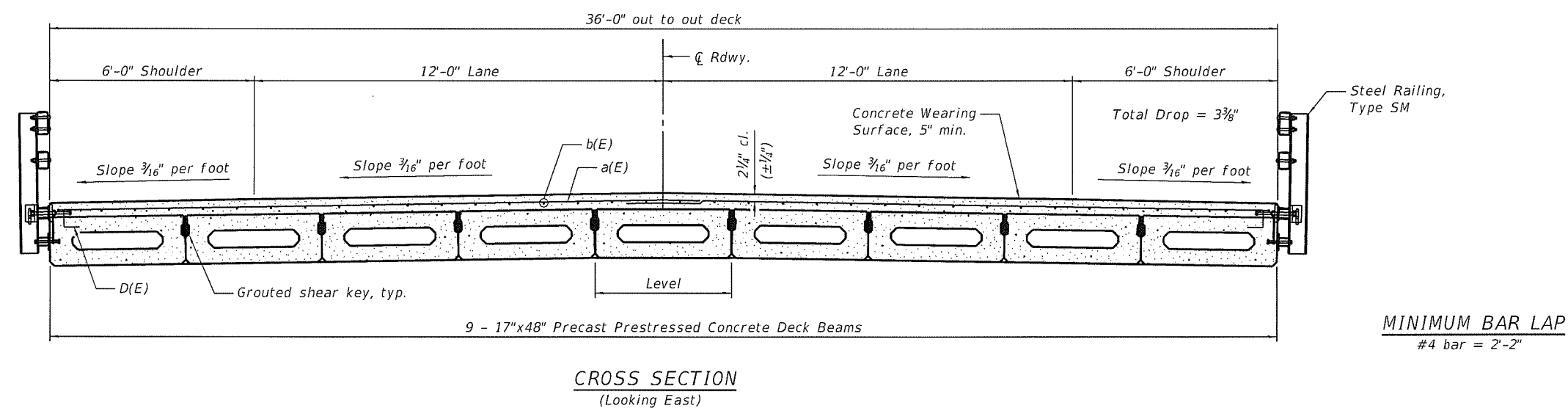
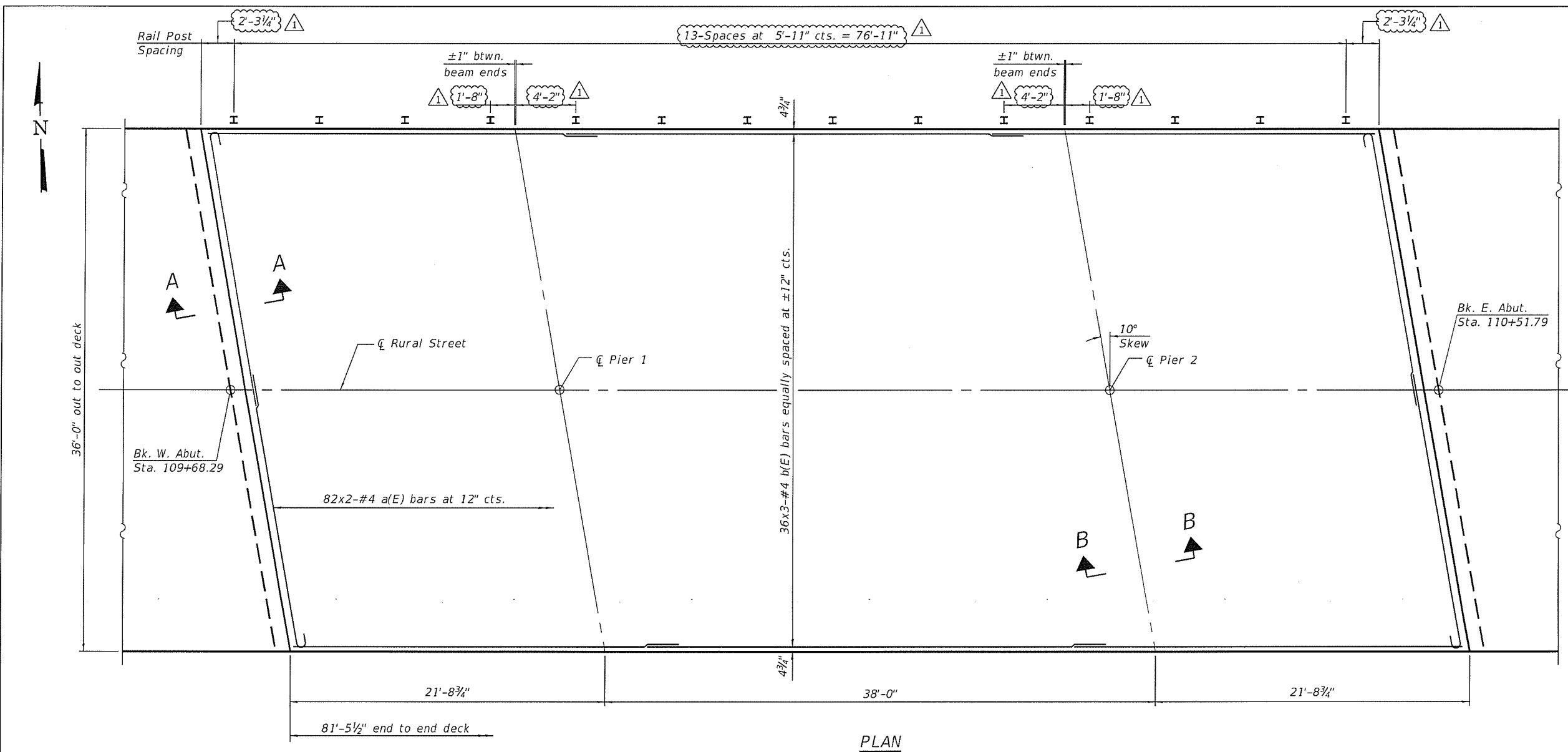
USER NAME =	lbptorff
PLOT SCALE =	1:40
PLOT DATE =	12/28/2018

DESIGNED -	RMS	REVISED -	12/28/18
DRAWN -	RMS	REVISED -	
CHECKED -	SBP	REVISED -	
DATE -	11/5/2018	REVISED -	

STATE OF ILLINOIS
 DEPARTMENT OF TRANSPORTATION

RURAL STREET OVER INDIAN CREEK
 PAVEMENT MARKING & SIGNING PLAN
 SCALE: 1"=20'
 SHEET 1 OF 1 SHEETS
 STA. 108+78.00 TO STA. 111+25.00

T.R. RTE.	SECTION	COUNTY	TOTAL SHEETS	SHEET NO.
189	15-01127-01-BR	KANE	58	21
CONTRACT NO. 61F31				
ILLINOIS FED. AID PROJECT				



NOTES

1. All concrete wearing surfaces shall be placed prior casting the backwall and constructing the Approach Slab.
2. See Sheet 5 of 24 for Sections A-A & B-B, Superstructure Details and Bill of Materials.
3. Bars indicated thus 82 x 2-#4 etc. indicates 82 lines of bars with 2 lengths per line.
4. Spacing of a(E) bars shall be measured along the κ of the structure.

FILE NAME = \\N:\Projects\2016\160285_Rural\SP\PH\Acadd\Structure\Draw\15127-204-Superstructure.dgn

WBK engineering
 WBK ENGINEERING, LLC
 115 WEST MAIN STREET, SUITE 201
 ST. CHARLES, ILLINOIS 60174
 (630) 443-7755

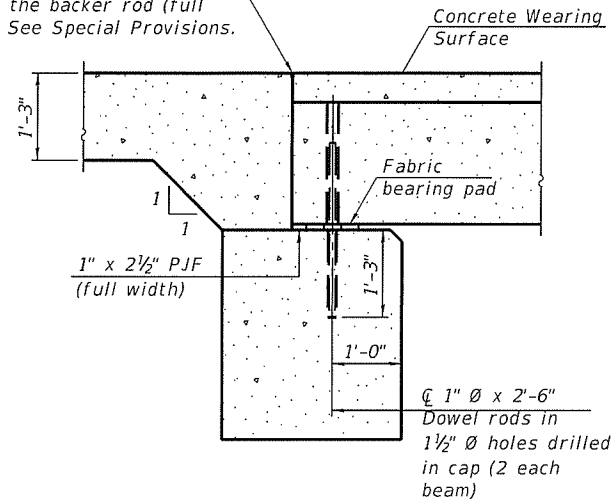
USER NAME = bpottorff	DESIGNED - MM	REVISED - 12/28/18
PLOT SCALE = 1:8	CHECKED - JSP	REVISED -
PLOT DATE = 12/28/2018	DRAWN - MM	REVISED -
	CHECKED - JSP	REVISED -

STATE OF ILLINOIS
 DEPARTMENT OF TRANSPORTATION

SUPERSTRUCTURE
 STRUCTURE NO. 045-9127
 SHEET NO. 4 OF 24 SHEETS

TR.	SECTION	COUNTY	TOTAL SHEETS	SHEET NO.
0189	15-01127-01-BR	KANE	58	25
CONTRACT NO. 61F31				
ILLINOIS FED. AID PROJECT				

1/4" x 3/4" Formed joint with bridge relief joint sealer without the backer rod (full width) See Special Provisions.



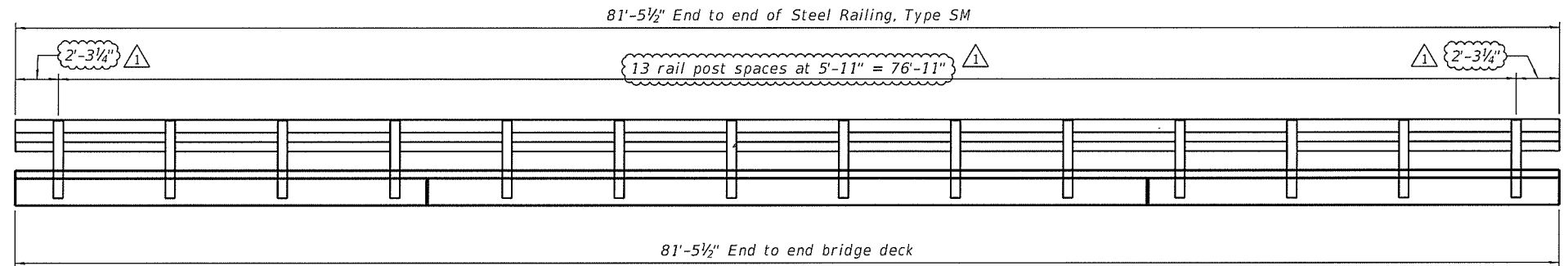
SECTION A-A

(Dimensions are at Rt. L's)

Notes:

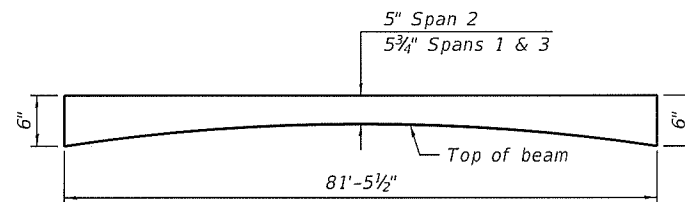
All concrete wearing surfaces shall be placed prior to casting a backwall and/or approach slab.

See sheet 10 of 24 for fabric bearing pad details.



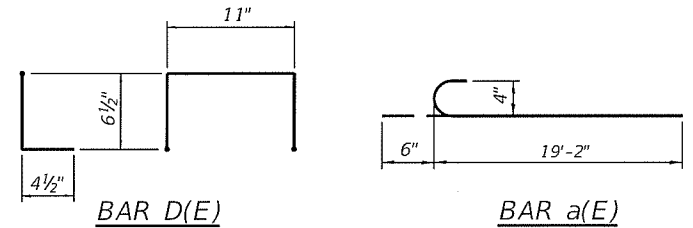
ELEVATION

Showing post spacing (See sheet 7 of 24 for Steel Railing, Type SM details)



ANTICIPATED CONCRETE WEARING SURFACE PROFILE

(For information only)



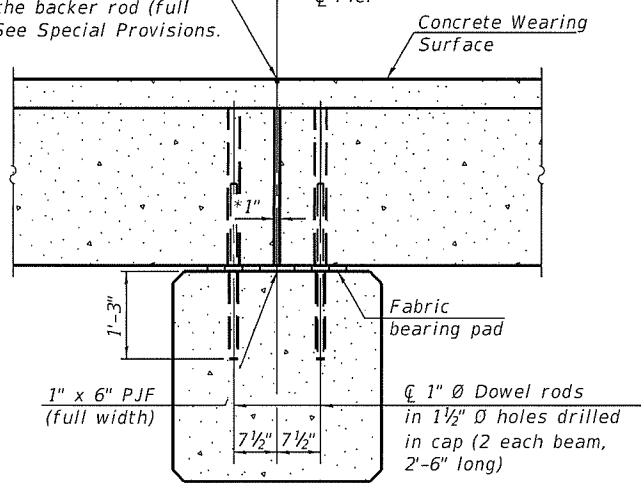
* Place 2-#4 D(E) bars in beam at each post location as shown. D(E) bar included in cost of beam.

SUPERSTRUCTURE BILL OF MATERIAL

Bar	No.	Size	Length	Shape
a(E)	164	#4	19'-8"	
b(E)	108	#4	28'-6"	
Reinforcement Bars, Epoxy Coated			Pound	4,220
Concrete Wearing Surface, 5"			Sq. Yd.	326
Bridge Deck Grooving			Sq. Yd.	326
Protective Coat			Sq. Yd.	326

Bars indicated thus 82 x 2 -#4 etc. indicates 82 line of bars with 2 lengths per line.

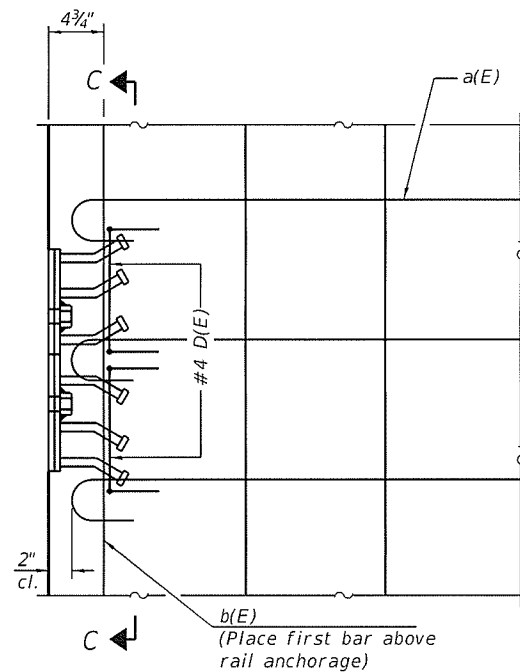
1/4" x 3/4" Formed joint with bridge relief joint sealer without the backer rod (full width) See Special Provisions.



SECTION B-B

(Dimensions are at Rt. L's)

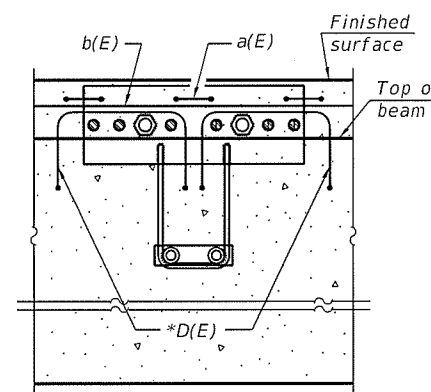
*1" Jt. shall be filled with non-shrink grout. 1" dimension may vary to accommodate tolerance in beam lengths.



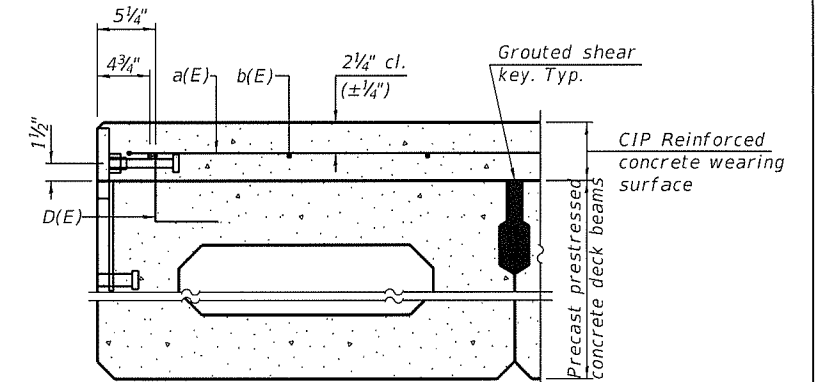
PLAN

Notes:

Formwork necessary for the wearing surface may be secured utilizing the bottom rail anchorage inserts and/or additional inserts cast into the beam.



SECTION C-C



SECTION THRU FASCIA BEAM

FILE NAME = H:\P\Projects\2016\160285 - Rural\SP\11\cadd\Structural\0459127-005-SuperDetail.dgn