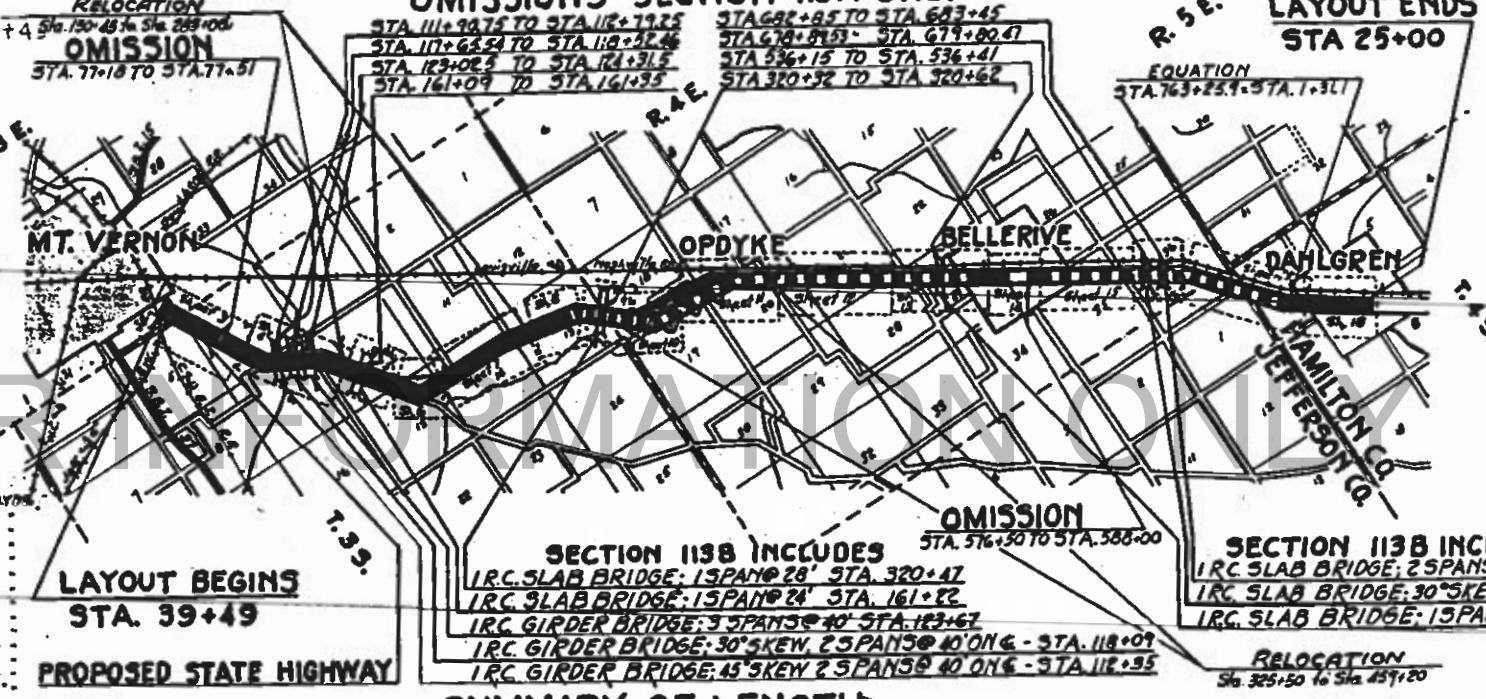


INDEX TO SHEETS

SHEET NO.	TITLE PAGE	STANDARD CROSS SECTION NO. 1250
1	STANDARD CROSS SECTION NO. 1250	PLAN AND PROFILE STA. 12+00 TO STA. 12+00
2	PLAN AND PROFILE STA. 12+00 TO STA. 12+00	12+00 TO 12+00
3	12+00 TO 12+00	12+00 TO 12+00
4	12+00 TO 12+00	12+00 TO 12+00
5	12+00 TO 12+00	12+00 TO 12+00
6	12+00 TO 12+00	12+00 TO 12+00
7	12+00 TO 12+00	12+00 TO 12+00
8	12+00 TO 12+00	12+00 TO 12+00
9	12+00 TO 12+00	12+00 TO 12+00
10	12+00 TO 12+00	12+00 TO 12+00
11	12+00 TO 12+00	12+00 TO 12+00
12	12+00 TO 12+00	12+00 TO 12+00
13	12+00 TO 12+00	12+00 TO 12+00
14	12+00 TO 12+00	12+00 TO 12+00
15	12+00 TO 12+00	12+00 TO 12+00
16	12+00 TO 12+00	12+00 TO 12+00
17	12+00 TO 12+00	12+00 TO 12+00
18	12+00 TO 12+00	12+00 TO 12+00
19	12+00 TO 12+00	12+00 TO 12+00
20	12+00 TO 12+00	12+00 TO 12+00

ROUTE 142, SEC'S. 113A & 113B, HAMILTON CO'S.

FROM A POINT NEAR THE S.E. CORNER OF SECTION 32, T. 2 S., R. 3 E. OF THE 3RD P.M. IN JEFFERSON COUNTY TO A POINT NEAR THE N.W. CORNER OF SECTION 8, T. 4 S., R. 3 E. OF THE 3RD P.M. IN HAMILTON COUNTY



SUMMARY OF QUANTITIES

SECTION 113A		SECTION 113B	
500 CU. YDS. CLASS B EXCAVATION	240 CU. YDS. CLASS A EXCAVATION	1656 CU. YDS. CLASS B EXCAVATION	1800 CU. YDS. CLASS C EXCAVATION
500 CU. YDS. CLASS C EXCAVATION	1800 CU. YDS. CLASS B CONCRETE	3226 CU. YDS. CLASS B CONCRETE	80.1 CU. YDS. CLASS X CONCRETE (RAIL)
5753 CU. YDS. SOFT POW. EXCAVATION	80.1 CU. YDS. CLASS X CONCRETE (RAIL)	80.1 CU. YDS. CLASS X CONCRETE (RAIL)	7317 CU. YDS. CLASS X CONCRETE (FOOTINGS)
98 RODS	274960 LBS. REINFORCING STEEL	1650 LIN. FT. UNTREATED PILES (12TON)	115400 LBS. REINFORCING STEEL
-250 BACS	112500 LBS. REINFORCING STEEL	115400 LBS. REINFORCING STEEL	115400 LBS. REINFORCING STEEL
73000 LBS. CLASS A CONCRETE			
73000 LBS. REINFORCING STEEL			

SUMMARY OF CONCRETE

SECTION 113A		SECTION 113B	
1.3 CU. YDS. SPEC. CULV. DES. STA. 12+00	1.3 CU. YDS. SPEC. CULV. DES. STA. 12+00	1.3 CU. YDS. SPEC. CULV. DES. STA. 12+00	1.3 CU. YDS. SPEC. CULV. DES. STA. 12+00
1.3 CU. YDS. SPEC. CULV. DES. STA. 12+00	1.3 CU. YDS. SPEC. CULV. DES. STA. 12+00	1.3 CU. YDS. SPEC. CULV. DES. STA. 12+00	1.3 CU. YDS. SPEC. CULV. DES. STA. 12+00
1.3 CU. YDS. SPEC. CULV. DES. STA. 12+00	1.3 CU. YDS. SPEC. CULV. DES. STA. 12+00	1.3 CU. YDS. SPEC. CULV. DES. STA. 12+00	1.3 CU. YDS. SPEC. CULV. DES. STA. 12+00

SUMMARY OF LENGTH

STATION TO STATION	GROSS LENGTH ALONG THROUGH LINE	CORRECTION FOR CURVES	CORRECTIONS FOR RELOCATIONS	NET LENGTH ALONG FINAL CENTER LINE	OMISSIONS	NET LENGTH TO BE IMPROVED IN FEET	PAVEMENT OVER BRIDGES	Sq. Yds. of Roadway
	FEET	FEET	FEET	FEET	FEET	FEET	FEET	TOTAL
39+49	48-00	391	39-00	52	548	548	548	21524
48-00	67-00	353	2200	61+23.9	4.0	21442	21442	86766
67-00	68-00	353	2100	85-00	1.5	20487	20487	81480
68-00	68-00	353	1000	95+48	7.5	992.5	992.5	37149
68-00	119-00	763	1900	118-00	0.0	1700	1700	63276
119-00	123-00	323	700	117-00	6.0	700	700	25710
123-00	181-00	587	2300	123-00	0.0	7186	7186	26819
181-00	182-00	587	3100	178+05.5	5.5	22447	22447	84110
182-00	208-00	587	2000	203-20	24.4	2540.4	2540.4	94330
208-00	235-00	587	4700	230-00	1.5	4648.5	4648.5	171427
235-00	310-00	587	3500	304+08.8	24.3	5471.1	5471.1	200710
310-00	367-00	587	5700	361+04	35.5	2644.5	2644.5	98310
367-00	420-00	587	5500	416+34.3	24.8	2272.2	2272.2	84071
420-00	540-00	587	12000	536+19	46.0	11440	11440	41928
540-00	570-00	587	3000	570-00	0.0	3850	3850	14186.1
570-00	680-00	587	9000	670-00	0.0	6700	6700	24615.0
680-00	708-00	587	2850	687+00.5	4.5	2713.5	2713.5	9920.0
708-00	744-00	587	3645	742+21.1	18.1	4076.9	4076.9	14801.6
744-00	800-00	587	5744.8	791+26.6	28.6	5744.8	5744.8	21147.5
TOTALS	16153.8	222.4	14542.4	14542.4	13379.7	13379.7	13379.7	488243

LAYOUT
APPROXIMATE SCALE 1 INCH=1 MILE
NET LENGTH OF LAYOUT = 73359.9 FT. = 13.894 MILES

Relocations Authorized 1-14-27

STATE OF ALABAMA
DEPARTMENT OF PUBLIC WORKS AND BUREAU
DIVISION OF HIGHWAYS

June 25 1928
P.E. Jarvis

June 25 1928
R.H. Jones

June 25 1928
W.C. Bost

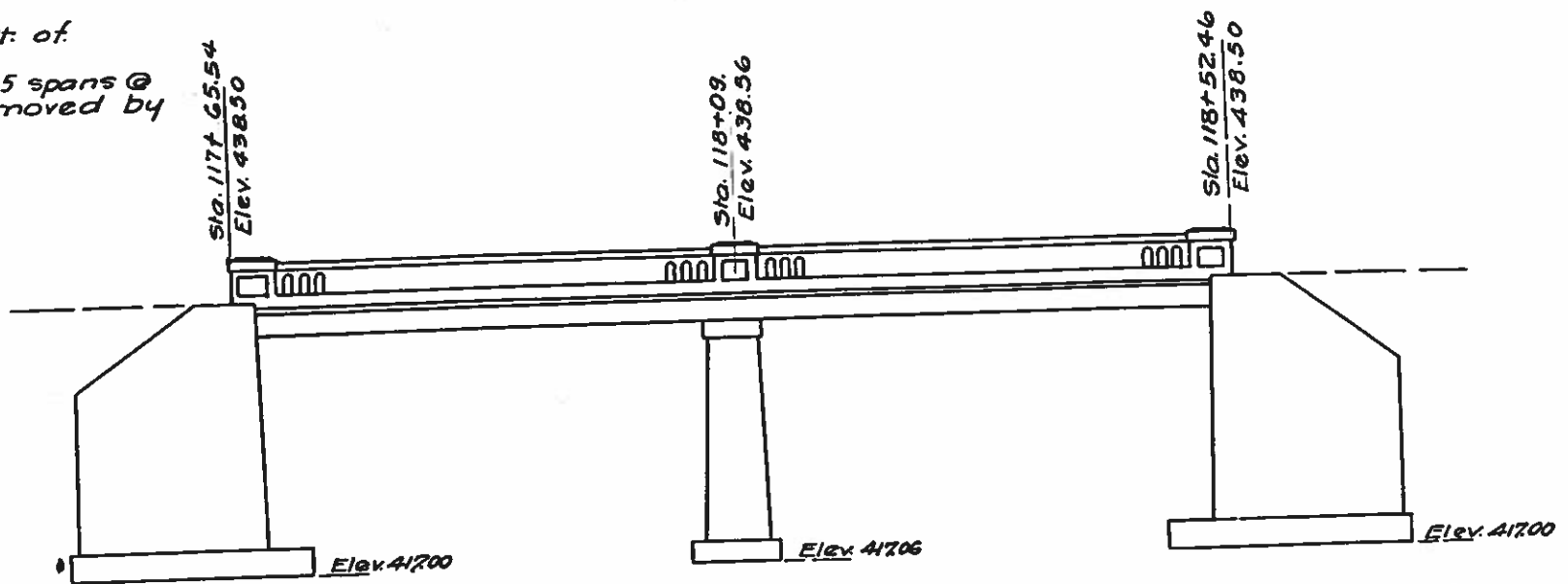
June 25 1928
J.G. Miller

041-0041

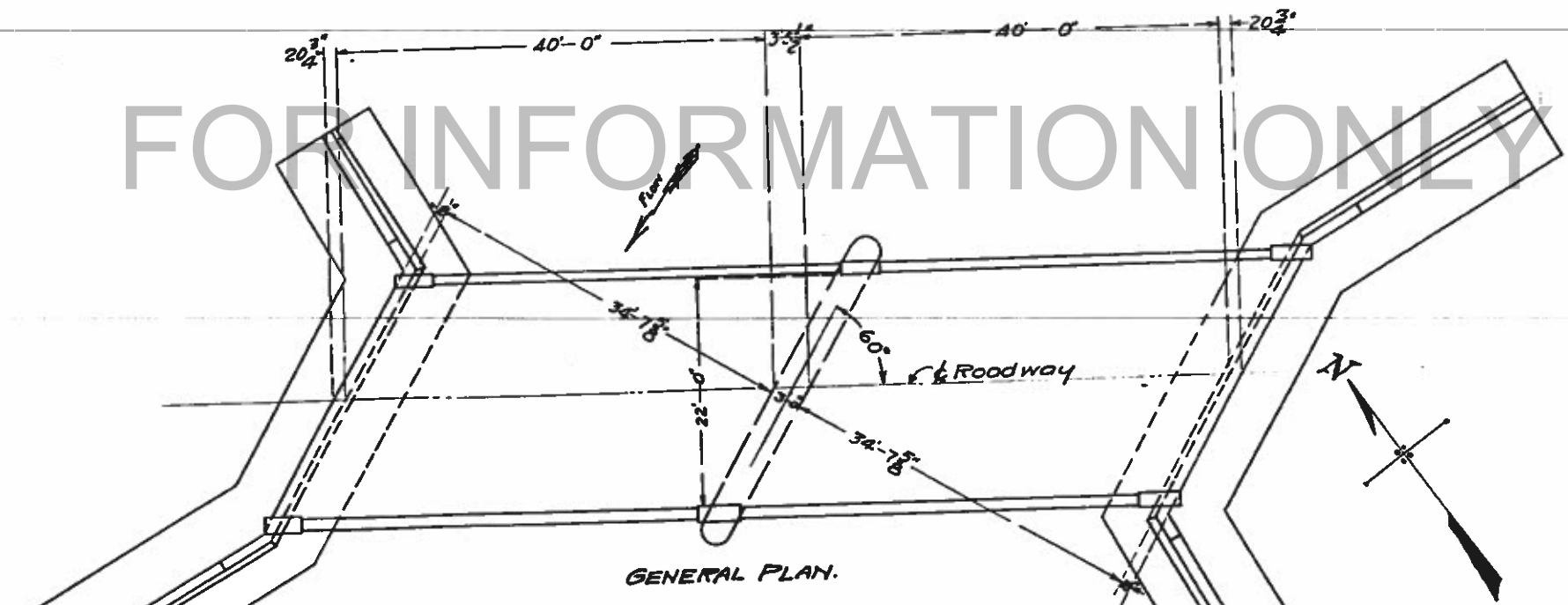
STATE OF ILLINOIS
DEPARTMENT OF PUBLIC WORKS & BUILDINGS
DIVISION OF HIGHWAYS

44 3115.10

B.M. S. & W. in tel. pole Rt. of
Sta. 119+40-433.18.
Existing Bridge: I beam, 5 spans @
14'-0". pile bents. To be removed by
bridge contractor.



GENERAL ELEVATION



GENERAL PLAN.

TOTAL BILL OF MATERIAL.

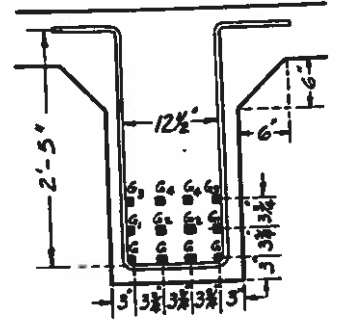
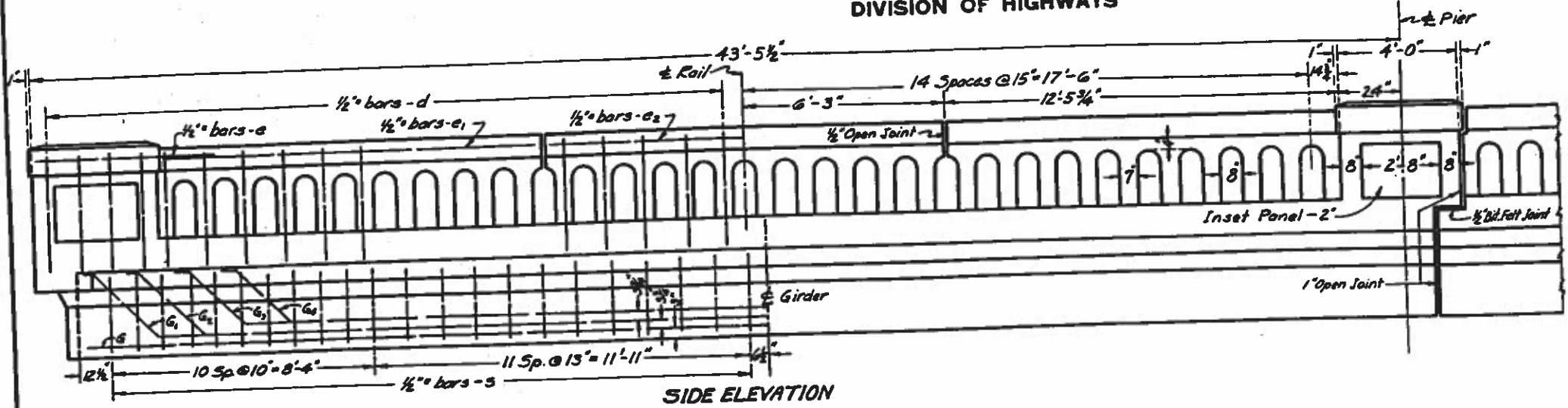
	Super.	Abuts.	Pier.	Totals.
Class A concrete - Cu. Yds.	54.6	125.3		219.9
Class B concrete Cu. Yds.			62.8	62.8
Class X concrete Cu. Yds. Roll.	13.0			13.0
Class X concrete - Cu. Yds. footing		134.6	11.1	145.7
Reinforcing Steel - Lbs.	29,470	20,060		49,530
Structural Steel Lbs.	640			640
Rockers and Plates Lbs.	2,030			2,030
10 Ton Piles - untr. - Lin. Ft.		1,020		1,020
12 Ton " " " "		360		360
15 Ton " " " "		1,000		1,000
P.C. Pavement - Sq. Yds.	202.8			202.8
Name Plate.	1			1
17 Ton Piles - untr. - Lin. Ft.			400	400

COMPUTED	- R.P. SWICK
CHECKED	- <i>[Signature]</i>
DRAWN	- <i>[Signature]</i>
CHECKED	- <i>[Signature]</i>
ASSEMBLED	- <i>[Signature]</i>
CHECKED	- <i>[Signature]</i>

EXAMINED July 10, 1928
[Signature]
PASSED *[Signature]*
APPROVED *[Signature]*

S.B.I. ROUTE 142 - SECTION 113-B
JEFFERSON COUNTY
STA. 118+09

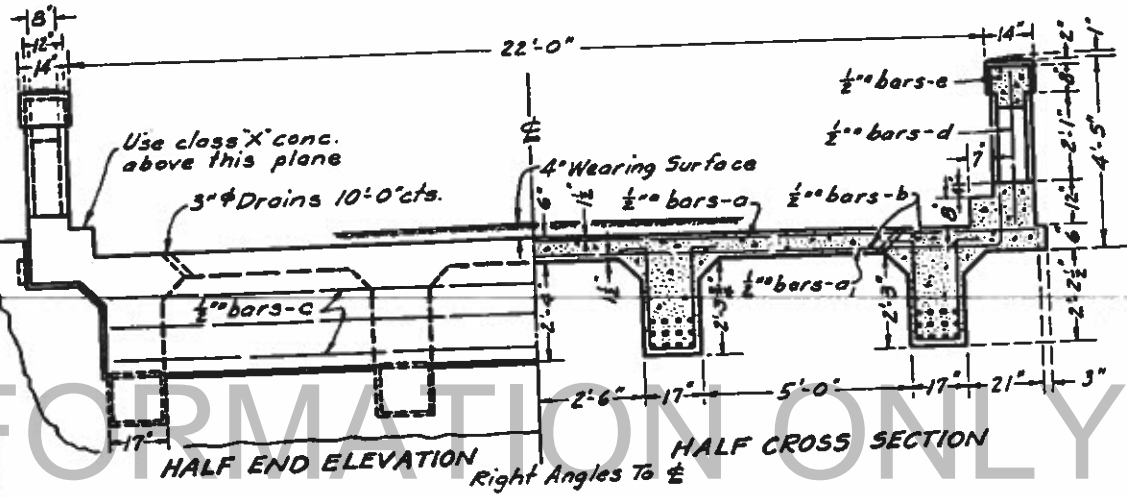
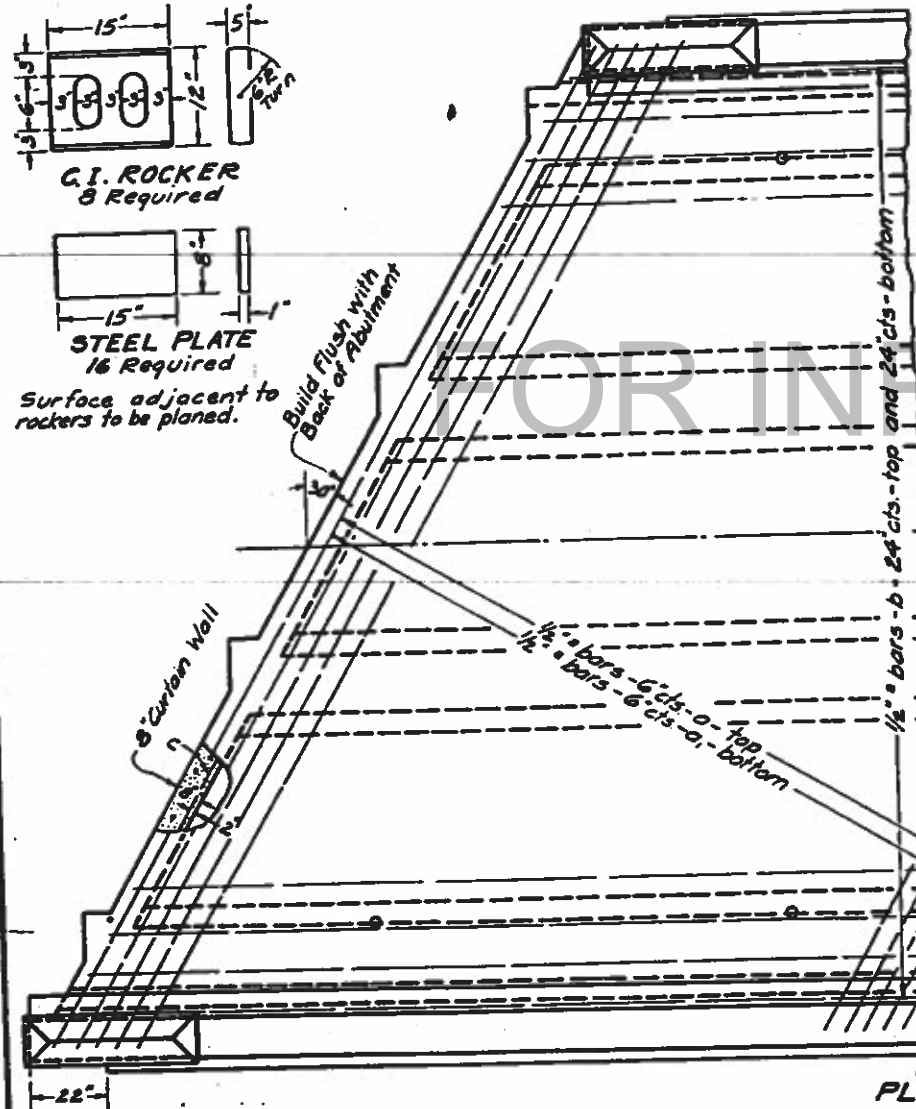
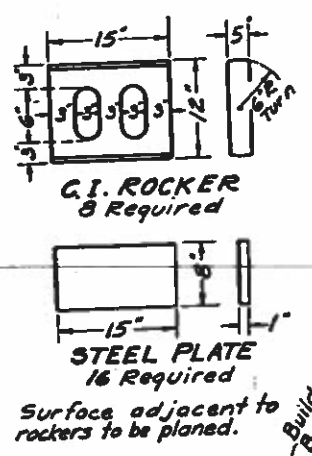
STATE OF ILLINOIS
DEPARTMENT OF PUBLIC WORKS & BUILDINGS
DIVISION OF HIGHWAYS



STIRRUP BARS-S

BILL OF MATERIAL-2 Spans

Bar	No.	Size	Length
a	150	1/2"	28'-0"
a1	150	.	29'-0"
b	92	.	22'-6"
c	12	.	23'-6"
d	144	.	3'-6"
e	12	.	6'-0"
e1	16	.	12'-0"
e2	8	.	12'-0"
G	32	1 1/8"	43'-0"
G1	16	.	45'-0"
G2	16	.	42'-0"
G3	16	.	39'-0"
G4	16	.	36'-0"
S	352	1/2"	8'-0"
Reinforcing Steel-Lbs.			29,470
Class A Concrete-Cu.Yds.			94.6
Class X Concrete-Cu.Yds.			13.0
C.I. Rockers-Lbs.			1490
Steel Plates-Lbs.			540
Name Plate			1
4" P.C.C. Pavement-Sq. Yds.			202.8

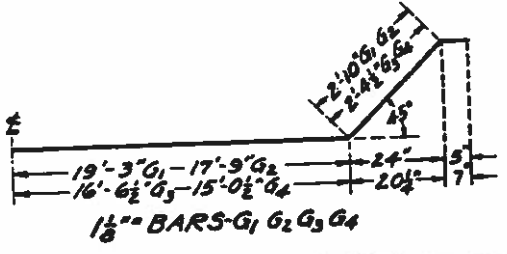


HALF CROSS SECTION
Right Angles To E

STANDARD	COMPUTED - M.P. SUPPRAK
	CHECKED - H. J. TANK
	DRAWN - H.P.S.
	CHECKED - H.P.S.
SPECIAL	ASSEMBLED -
	CHECKED -

EXAMINED July 10, 1928
 J. J. B. [Signature]
 PASSED [Signature]
 APPROVED [Signature]
 CHIEF HIGHWAY ENGINEER

Class A concrete to be used below top of hubguard. Proportions 1:2 1/2:4.
 Class X concrete to be used above top of hubguard. Proportions 1:2:3 1/2.
 Rockers and plates to be given two coats of sublimed blue lead paint.

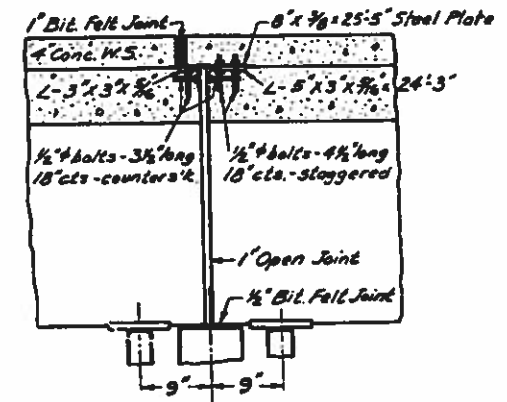
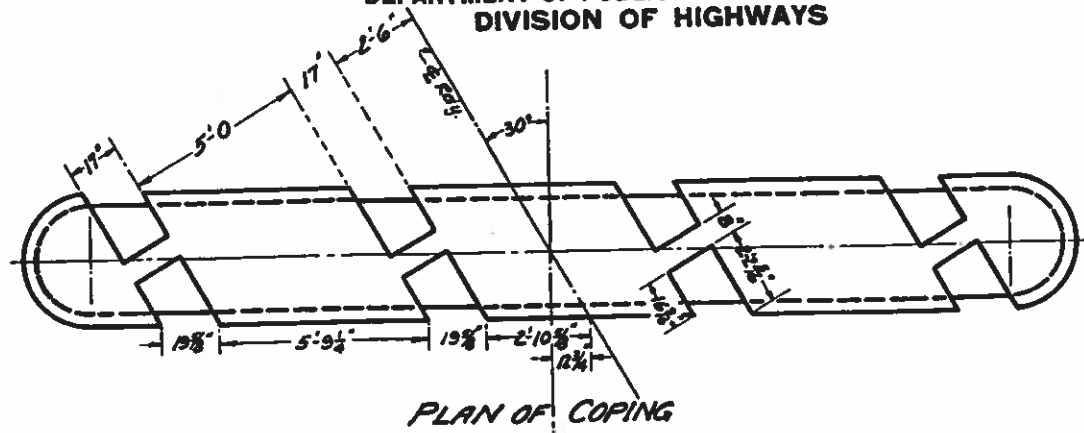


S.B.I. ROUTE 142 SEC. 113-B
 JEFFERSON COUNTY
 STA. 118 + 09

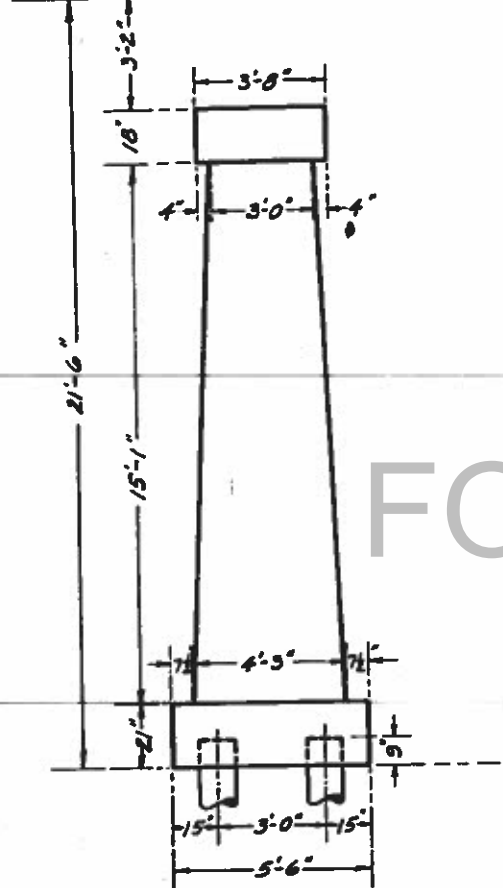
B.M. - S & W. in tel. pole. Rt of Sta. 113+40 - Elev. 433.18

STATE OF ILLINOIS
DEPARTMENT OF PUBLIC WORKS & BUILDINGS
DIVISION OF HIGHWAYS

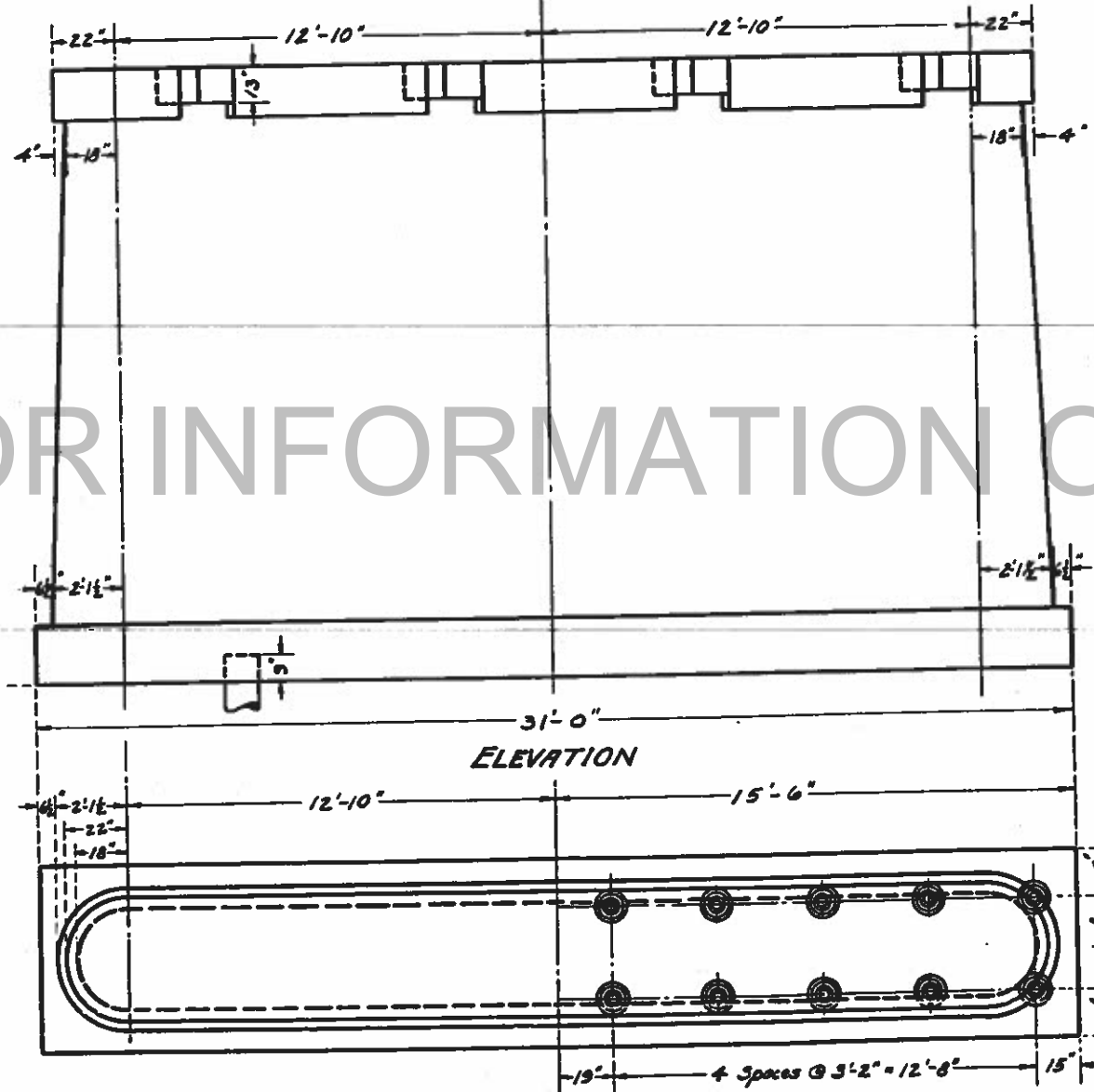
142 HAMILTON JEFFERSON 108 98 1.55 4 SHEETS



Crown of Finished Roadway - Elev. 438.56

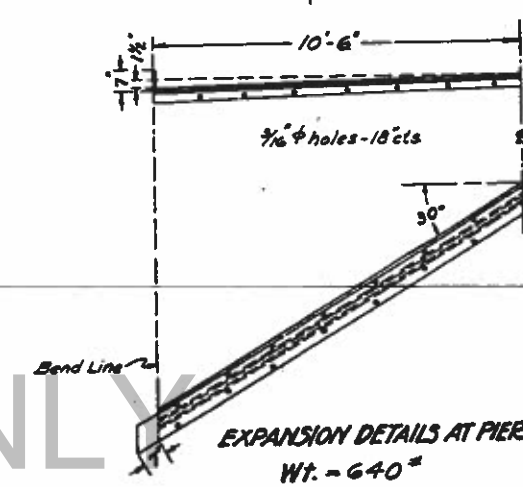


END VIEW



ELEVATION

PLAN OF FOOTING



EXPANSION DETAILS AT PIER
Wt. = 640 lbs

Class "B" concrete shall be used above top of footings.
Proportions - 1:3:5.
Class "X" concrete, using class "B" coarse aggregate,
shall be used in footings. Proportions - 1:2:3 1/2.

BILL OF MATERIAL

Class "B" concrete - Cu. Yds.	62.8
Class "X" concrete - Cu. Yds.	11.1
17 Ton Untr. Piling - Lineal Feet.	400
Expansion Guard - Lbs.	640

17 Ton Untreated Piling. 12" butt, 10" tip.
20 required. Est. length = 400 lin. ft.

Expansion Guard shall be given one shop coat of sublimed blue lead paint and two field coats of white lead paint.

COMPUTED	- H.P. SUPLEAK
CHECKED	- H.P. SUPLEAK
DRAWN	- H.P.S.
CHECKED	- H.P.S.
SPECIAL ASSEMBLED	-
CHECKED	-

EXAMINED July 10 1928
PASSED
APPROVED
CHIEF HIGHWAY ENGINEER

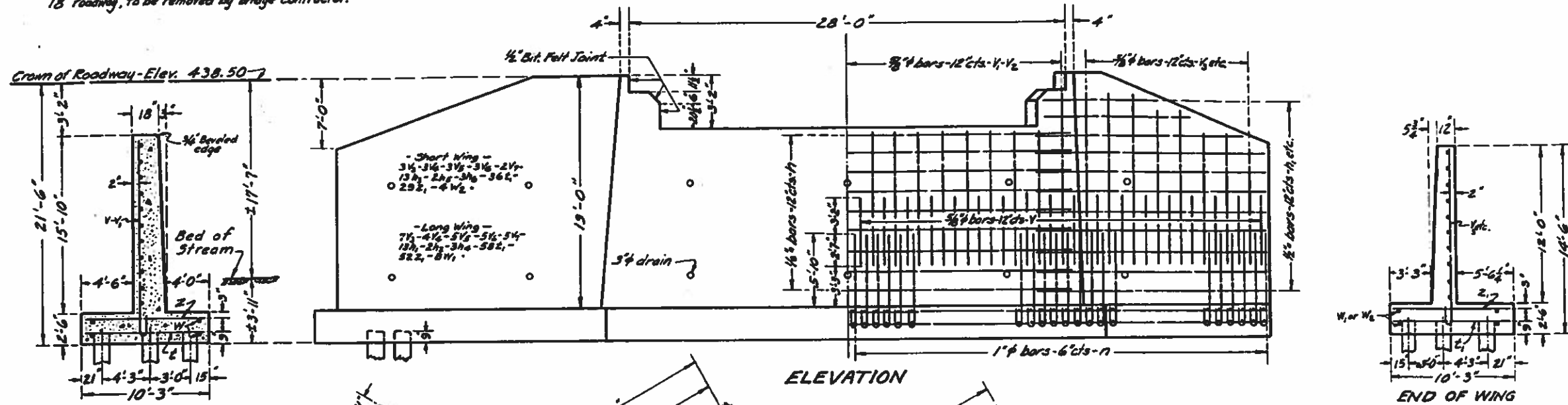
S.B.I. ROUTE 142 - SECTION 113-B
JEFFERSON COUNTY
STA. 118+09

B.M. - 3.0 W. in tel. pole. Rt. of Sta. 119+40 - Elev. 433.18

STATE OF ILLINOIS
DEPARTMENT OF PUBLIC WORKS & BUILDINGS
DIVISION OF HIGHWAYS

PROJECT NO.	COUNTY	SEC.	TOTAL SHEETS	SHEET NO.
142	JEFFERSON	113-B	89	89

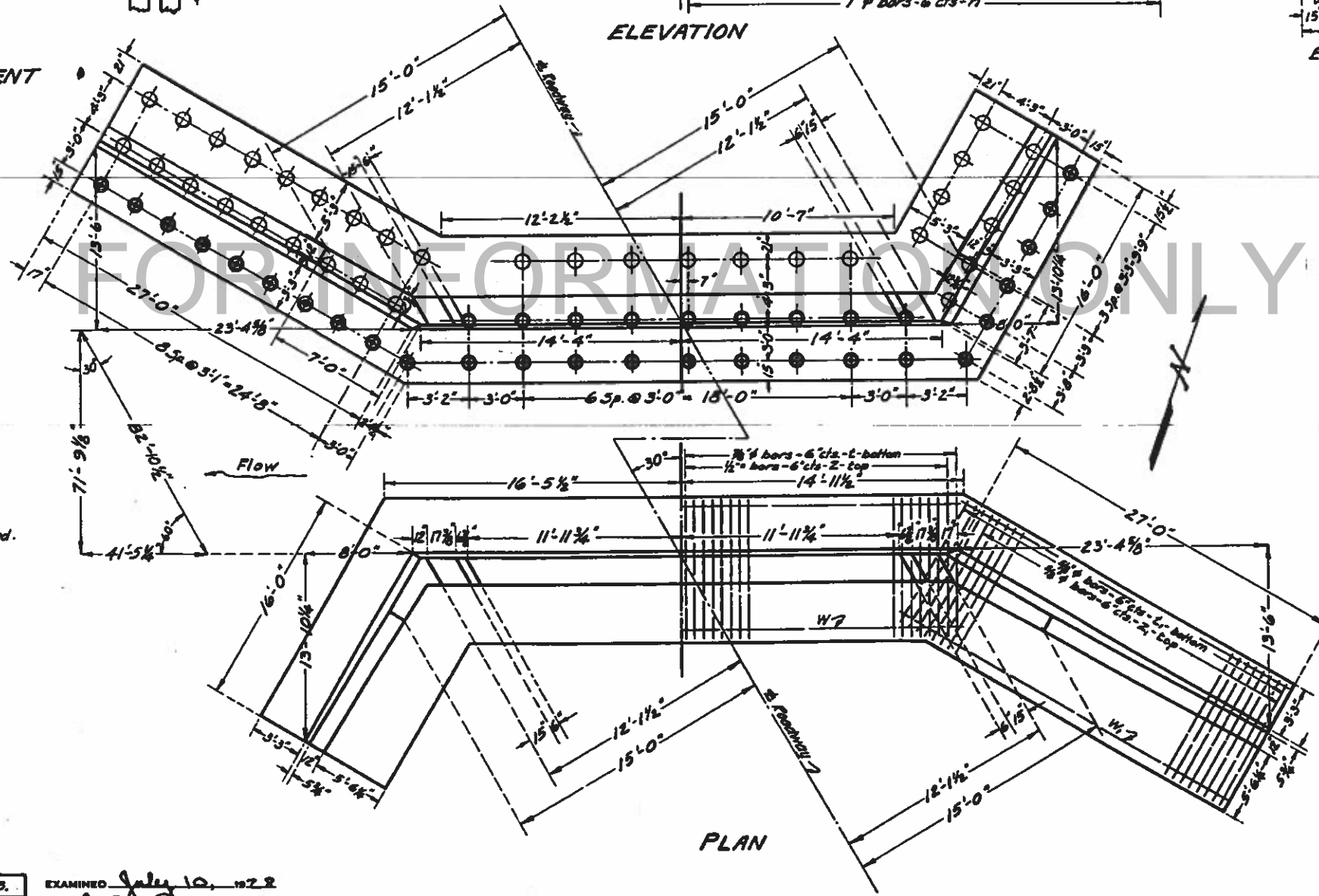
Existing structure - Wood, Pile, 5 spans @ 14'-0"
18' roadway, to be removed by bridge contractor.



SECTION OF ABUTMENT

ELEVATION

END OF WING



PLAN

- 15 Ton Untr. Piling - 12" butt, 10" tip - 50 req'd. Est. length = 1000 lin. ft.
- 12 Ton Untr. Piling - 10" tip, 12" butt - 18 req'd. Est. length = 360 lin. ft.
- ⊙ 10 Ton Untr. Piling - 8" tip, 10" butt - 68 req'd. Est. length = 1020 lin. ft.

All reinforcing steel shall be wired securely in place before concrete is poured.

Class II concrete shall be used above top of footings. Proportions - 1:2 1/2:4.

Class X concrete, using class II coarse aggregate, shall be used in footings. Proportions - 1:2:3 1/2.

BILL OF MATERIAL

Bar	No.	Size	Length
V	140	3/4"	5'-9"
V1	48	"	12'-6"
V2	12	"	14'-6"
V3	20	"	15'-0"
V4	14	"	13'-6"
V5	16	"	12'-0"
V6	16	"	10'-6"
V7	14	"	9'-0"
h	64	1/2"	15'-6"
h1	26	"	28'-0"
h2	4	"	21'-6"
h3	26	"	16'-6"
h4	6	"	16'-0"
h5	4	"	16'-6"
h6	6	"	9'-0"
n	280	1"	10'-0"
Z	128	3/4"	10'-0"
Z1	188	3/4"	10'-0"
Z2	120	1/2"	10'-0"
Z3	162	3/4"	10'-0"
W	16	1/2"	16'-6"
W1	16	"	15'-6"
W2	8	"	18'-6"
Reinforcing Steel - Lbs.			20,060
Class X Concrete - Cu. Yds.			154.6
Class II Concrete - Cu. Yds.			125.3

STANDARD	COMPUTED - H.L.K. - M.P.S.
	CHECKED - <i>[Signature]</i>
SPECIAL	DRAWN - M.P.S.
	CHECKED - H.L.K.
SPECIAL	ASSEMBLED - <i>[Signature]</i>
	CHECKED - <i>[Signature]</i>

EXAMINED July 10, 1922
[Signature]
 PASSED *[Signature]*
 APPROVED *[Signature]*
 CHIEF HIGHWAY ENGINEER

S.B.I. ROUTE 142 - SECTION 113-B
JEFFERSON COUNTY
STA. 118+09