

SN 041-0077 & 041-0078
 2000 MICROKILICA CONC OVERLAY

MMO 12/18/98
 \94678\000288pc.dgn
 REV
 CS
 1 2 3 4 5 6 7 8 9
 10 11 12 13 14 15 16 17 18
 19 20 21 22 23 24 25 26
 27 28 29 30 31 32 33 34
 35 36 37 38 39 40 41 42 43
 44 45 46 47 48 49 50 51
 52 53 54 55 56 57 58 59 60

FOR INDEX OF SHEETS SEE SHEET NO. 2

LOCATION OF STRUCTURES

- ① SN 041-0085 & 041-0086
RAYSE CREEK
STATION 103+223.531
- ② SN 041-0077 & 041-0078
TR 108A / BURLINGTON NORTHERN RR
STATION 107+568.768
- ③ SN 041-0075 & 041-0076
BIG MUDDY RIVER
STATION 112+597.978
- ④ SN 041-0060
NORTH TRI-LEVEL (2ND LEVEL)
STATION 118+335.301
- ⑤ SN 041-0067 & 041-0068
ILLINOIS ROUTE 37
STATION 128+554.657
- ⑥ SN 041-0089 & 041-0090
CASEY FORK & UNION PACIFIC RR
STATION 128+937.733
- ⑦ SN 041-0087 & 041-0088
CASEY FORK OVERFLOW
STATION 129+527.587
- ⑧ SN 041-0081 & 041-0082
COUNTY HIGHWAY 17
STATION 142+861.754

STATE OF ILLINOIS
 DEPARTMENT OF TRANSPORTATION
 DIVISION OF HIGHWAYS

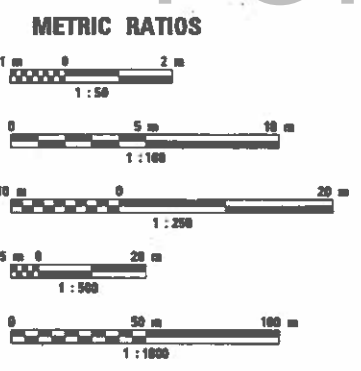
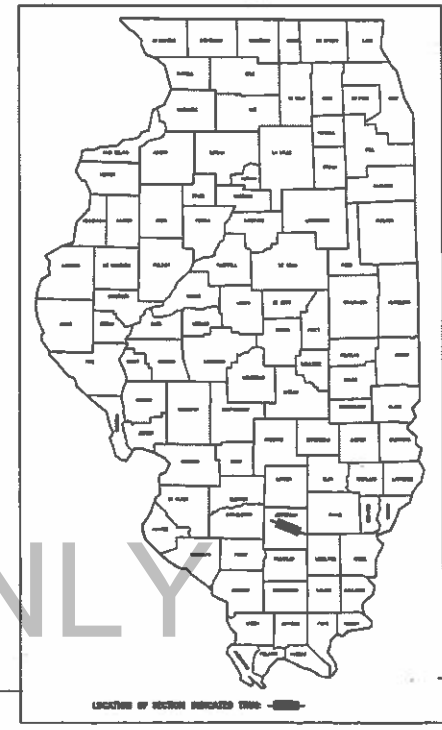
PLANS FOR PROPOSED
 FEDERAL AID HIGHWAY

FAI ROUTE 64 (I-64)
 SECTION D-7 BRIDGE DECK REPAIR 1999-1
 PROJECT IM - 64 - 3 (78) 61
 JEFFERSON COUNTY
 C-97-028-98

PLAN
 PROFILE HORIZ.
 PROFILE VERT.
 CROSS SECTIONS

FAI	SECTION	COUNTY	NO.	REV.
64		JEFFERSON	58	1

FILE NO. PROJ. NO. 1
 DATE
 FILE NO. PROJ. NO. 2
 D-7 BRIDGE DECK REPAIR 1999-1
 D-97-028-98 **IM-64-3(78)61



FULL SIZE PLANS HAVE BEEN PREPARED USING STANDARD ENGINEERING SCALES. REDUCED SIZED PLANS WILL NOT CONFORM TO STANDARD SCALES. IN MAKING MEASUREMENTS ON REDUCED PLANS, THE ABOVE SCALES MAY BE USED.

J.L.L.L.E.
 JOINT UTILITY LOCATION INFORMATION FOR EXCAVATION
 1-800-832-8123

CONTRACT NO. 94678

PROJECT ENGINEER : KEN HILL
 SQUAD LEADER : JIM WENTE
 TELEPHONE : 217/342-3851 EX 314



GROSS LENGTH = m = km
 NET LENGTH = m = km

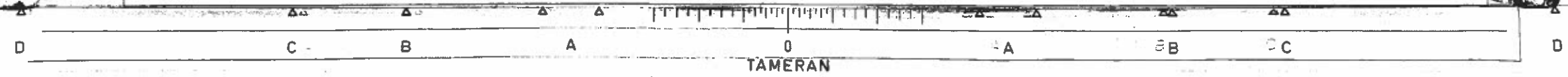
STATE OF ILLINOIS
 DEPARTMENT OF TRANSPORTATION
 DIVISION OF HIGHWAYS

APPROVED DEC 18 19 98
James R. Smith DISTRICT ENGINEER

ENGINEER OF PROJECT DEVELOPMENT AND IMPLEMENTATION
January 29, 99
Bill Hunkeler
 ENGINEER OF DESIGN AND ENVIRONMENT

ENGINEER OF DESIGN AND ENVIRONMENT
January 29, 99
James R. Smith
 DIRECTOR, DIVISION OF HIGHWAYS

PRINTED BY THE AUTHORITY OF
 THE STATE OF ILLINOIS



MMO 12/17/98
 \946780\002890c.dgn
 MMO REV: 09-01-98

IND
 1 1.1
 2 1.2
 3 1.3
 4 1.4
 5 1.5
 6 1.6
 7 1.7
 8 1.8
 9 1.9
 10 1.10
 11 1.11
 12 1.12
 13 1.13
 14 1.14
 15 1.15
 16 1.16
 17 1.17
 18 1.18
 19 1.19
 20 1.20
 21 1.21
 22 1.22
 23 1.23
 24 1.24
 25 1.25
 26 1.26
 27 1.27
 28 1.28
 29 1.29
 30 1.30
 31 1.31
 32 1.32
 33 1.33
 34 1.34
 35 1.35
 36 1.36
 37 1.37
 38 1.38
 39 1.39
 40 1.40
 41 1.41
 42 1.42
 43 1.43
 44 1.44
 45 1.45
 46 1.46
 47 1.47
 48 1.48
 49 1.49
 50 1.50
 51 1.51
 52 1.52
 53 1.53
 54 1.54
 55 1.55
 56 1.56
 57 1.57
 58 1.58

MMO 12/17/98

GENERAL NOTES

THIS SECTION SHALL BE CONSTRUCTED IN ACCORDANCE WITH THE PLANS; THE "STANDARD SPECIFICATIONS FOR ROAD AND BRIDGE CONSTRUCTION" ADOPTED JANUARY 1, 1997; THE "SUPPLEMENTAL SPECIFICATIONS AND RECURRING SPECIAL PROVISIONS" ADOPTED JANUARY 1, 1999 AND THE SPECIAL PROVISIONS INCLUDED IN THE PROPOSAL.

THIS PROJECT IS LOCATED ON FIFTEEN STRUCTURES CARRYING F. A. I. ROUTE 64 OVER VARIOUS ROADWAYS AND WATERWAYS IN JEFFERSON COUNTY.

THE WORK INCLUDED IN THIS SECTION CONSISTS OF BITUMINOUS SHOULDER REMOVAL, CONSTRUCTION OF PCC BASE COURSE WIDENING, REMOVAL OF THE EXISTING BITUMINOUS WEARING SURFACE AND WATERPROOFING MEMBRANE SYSTEM, PARTIAL AND FULL DEPTH PATCHING OF THE DECKS, THE REMOVAL AND REPLACEMENT OF THE EXPANSION JOINTS ON EIGHT OF THE STRUCTURES, THE REMOVAL AND REPLACEMENT OF THE BEARING ASSEMBLIES ON SIX OF THE STRUCTURES, CONSTRUCTION OF A MICROSILICA CONCRETE OVERLAY ON ALL OF THE STRUCTURES AND ANY OTHER WORK NECESSARY TO COMPLETE THIS SECTION.

PLAN DIMENSIONS AND DETAILS RELATIVE TO THE EXISTING STRUCTURE HAVE BEEN TAKEN FROM EXISTING PLANS AND ARE SUBJECT TO NOMINAL CONSTRUCTION VARIATIONS. IT SHALL BE THE CONTRACTORS RESPONSIBILITY TO VERIFY SUCH DIMENSIONS AND DETAILS IN THE FIELD AND MAKE NECESSARY APPROVED ADJUSTMENTS PRIOR TO CONSTRUCTION OR ORDERING OF MATERIAL. SUCH VARIATIONS SHALL NOT BE CAUSE FOR ADDITIONAL COMPENSATION FOR A CHANGE IN THE SCOPE OF THE WORK; HOWEVER, THE CONTRACTOR WILL BE PAID FOR THE QUANTITY ACTUALLY FURNISHED AT THE UNIT PRICE BID FOR THE WORK.

THE QUANTITIES OF EPOXY PAVEMENT MARKING - LINE 100 MM WERE COMPUTED TO THE FOLLOWING LIMITS. WHITE EDGELINE COMPUTED FROM THE BEGINNING STATION ON THE APPROACH END TO THE ENDING STATION ON THE DEPARTURE END OF THE BASE COURSE WIDENING FOR STAGE I. YELLOW EDGELINE COMPUTED FROM THE BEGINNING STATION ON THE APPROACH END TO THE ENDING STATION ON THE DEPARTURE END OF THE BASE COURSE WIDENING FOR STAGE II. WHITE SKIP CENTERLINE COMPUTED FOR THE LENGTH OF THE BRIDGE. THESE COMPUTATIONS RESULTED IN THE FOLLOWING QUANTITIES:

- 5296 METERS (YELLOW)
- 5467 METERS (WHITE)
- 10763 METERS (TOTAL)

THE QUANTITY OF TEMPORARY PAVEMENT MARKING - LINE 100MM WAS COMPUTED TO ALLOW FOR THE PLACEMENT OF TWO EDGELINES AND A CENTERLINE ON THE WIDENING DURING THE DECK REPAIR OPERATIONS AND TWO EDGELINES AND A CENTERLINE ON THE PAVEMENT AFTER THE COMPLETION OF THE REPAIR WORK AND PRIOR TO THE PLACEMENT OF THE PERMANENT PAVEMENT MARKINGS.

THE LOCATIONS OF THE EXISTING DECK DRAINS TO BE PLUGGED ARE APPROXIMATE. THESE LOCATIONS WERE DERIVED FROM THE ORIGINAL BRIDGE PLANS. ANY DRAINS THAT ARE LOCATED WITHIN THREE METERS OF A SUBSTRUCTURE ELEMENT ARE TO BE PLUGGED.

FOLLOWING THE REMOVAL OF THE BITUMINOUS SURFACE AND WATERPROOFING, THE BRIDGE DECK SHALL BE SCARIFIED TO A DEPTH OF 20MM. THE BRIDGE DECK MICROSILICA CONCRETE OVERLAY SHALL BE CONSTRUCTED AT A DEPTH OF 60MM.

BASE COURSE WIDENING CONSTRUCTED FOR THIS PROJECT WILL REMAIN IN PLACE. THE WIDENING SHALL BE CONSTRUCTED AS PORTLAND CEMENT CONCRETE BASE COURSE WIDENING, 200MM. THE REMOVAL OF THE EXISTING BITUMINOUS SHOULDER SHALL BE PAID FOR SEPARATELY AS BITUMINOUS SHOULDER REMOVAL. ALL OTHER EXCAVATION AND DISPOSAL OF MATERIAL WILL BE INCLUDED IN THE BID PRICE FOR BASE COURSE WIDENING.

THE PORTLAND CEMENT CONCRETE BASE COURSE WIDENING, 200MM SHALL BE REINFORCED WITH WELDED WIRE FABRIC, 152 X 152 - MW25.8 X MW25.8, WITH A MASS OF 2.91 KG/50. METER. THIS WELDED WIRE FABRIC WILL NOT BE PAID FOR SEPARATELY BUT SHALL BE INCLUDED IN THE COST OF THE PCC BASE COURSE WIDENING.

BITUMINOUS SHOULDER REMOVAL SHALL CONSIST OF REMOVAL OF THE BITUMINOUS SHOULDER TO A MINIMUM DEPTH OF 200MM TO OBTAIN THE REQUIRED THICKNESS FOR THE PCC BASE COURSE WIDENING.

ALL PLAN DIMENSIONS ARE MEASURED IN MILLIMETERS UNLESS OTHERWISE NOTED.

EXISTING REINFORCEMENT BARS SHALL BE CLEANED AND USED FOR NEW CONSTRUCTION. ALL NEW REINFORCEMENT BARS SHALL BE EPOXY COATED WITH EPOXY COATED BAR SPLICERS FOR STAGE CONSTRUCTION.

EXISTING STRUCTURAL STEEL SHALL ONLY BE CLEANED AND PAINTED AS REQUIRED BY THE SPECIAL PROVISION "CLEANING AND PAINTING ADJACENT AREAS OF EXISTING STEEL STRUCTURES".

ANY REINFORCEMENT BARS THAT ARE DAMAGED DURING CONCRETE REMOVAL OPERATIONS SHALL BE REPAIRED OR REPLACED USING AN APPROVED BAR SPLICER OR ANCHORAGE SYSTEM (COST INCLUDED IN CONCRETE REMOVAL).

ALL NEW STRUCTURAL STEEL SHALL CONFORM TO AASHTO CLASSIFICATION M-270 GRADE 250. THE TOTAL ESTIMATED QUANTITY OF FURNISH AND ERECT STRUCTURAL STEEL REQUIRED FOR THIS PROJECT IS 17130 KG.

THE EXISTING STRUCTURAL STEEL COATING CONTAINS LEAD. THE CONTRACTOR SHALL TAKE APPROPRIATE PRECAUTIONS TO DEAL WITH THE PRESENCE OF LEAD ON THIS PROJECT.

REINFORCEMENT BARS SHALL CONFORM TO THE REQUIREMENTS OF AASHTO M-31M, M-42M OR M-53M, GRADE 400.

THE INORGANIC ZINC RICH PRIMER/ACRYLIC/ACRYLIC PAINT SYSTEM SHALL BE USED FOR SHOP AND FIELD PAINTING OF NEW STRUCTURAL STEEL EXCEPT WHERE OTHERWISE NOTED. THE COLOR OF THE ACRYLIC FINISH COAT SHALL BE REDDISH BROWN, MUNSELL NO. 2.5 YR, 3/4. SEE SPECIAL PROVISIONS FOR "CLEANING AND PAINTING NEW METAL STRUCTURES". EXPANSION JOINT PLATES AND ATTACHED BARS SHALL BE SHOP PAINTED WITH THE ZINC SILICATE PRIMER.

THE STATE OWNED TEMPORARY CONCRETE BARRIERS WHICH ARE TO BE USED IN THIS PROJECT ARE STORED AT THE IDOT MAINTENANCE YARD AT KNIGHTS PRAIRIE WHICH IS LOCATED APPROXIMATELY 11.3 KM WEST OF MCLEANSBORO ON ILLINOIS ROUTE 14 IN HAMILTON COUNTY. A MINIMUM OF 48 HOURS NOTICE WILL BE REQUIRED TO ARRANGE FOR PICK UP AND RETURN OF THE BARRIERS. STATE MAINTENANCE FORCES WILL NOT LOAD OR UNLOAD THE BARRIERS.

A	SECTION	COUNTY	SHEET NO.	TOTAL SHEETS
64		JEFFERSON	58	2
<small>FULL SCALE DET. PL. 7 ILLINOIS ILL. HD PROJECT NO.</small> • D-7 BRIDGE DECK REPAIR 1999-1				

INDEX OF SHEETS

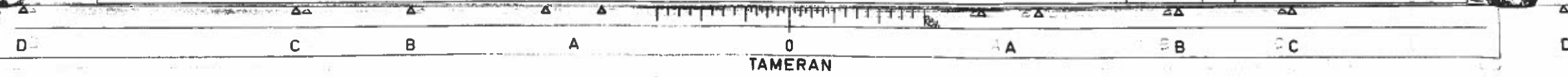
SHEET NO.	TITLE
1	TITLE SHEET
2	INDEX OF SHEETS AND GENERAL NOTES
3	SUMMARY OF QUANTITIES
4	SCHEDULE OF QUANTITIES AND DECK DRAIN DETAILS
5-10	EXISTING STRUCTURE DETAILS
11	STAGE CONSTRUCTION DETAILS - LOCATION 1
12-13	EXPANSION JOINT DETAILS - LOCATION 1
14-15	BRIDGE DECK PATCHING SURVEY - LOCATION 1
16	STAGE CONSTRUCTION DETAILS - LOCATION 2
17	ELASTOMERIC BEARING DETAILS - LOCATION 2
18-21	BRIDGE DECK PATCHING SURVEY - LOCATION 2
22	STAGE CONSTRUCTION DETAILS - LOCATION 3
23-24	EXPANSION JOINT DETAILS - LOCATION 3
25-26	ELASTOMERIC BEARING DETAILS - LOCATION 3
27-28	BRIDGE DECK PATCHING SURVEY - LOCATION 3
29	STAGE CONSTRUCTION DETAILS - LOCATION 4
30	EXPANSION JOINT DETAILS - LOCATION 4
31	BRIDGE DECK PATCHING SURVEY - LOCATION 4
32	STAGE CONSTRUCTION DETAILS - LOCATION 5
33-34	EXPANSION JOINT DETAILS - LOCATION 5
35-36	BRIDGE DECK PATCHING SURVEY - LOCATION 5
37	STAGE CONSTRUCTION DETAILS - LOCATION 6
38	EXPANSION JOINT DETAILS - LOCATION 6
39-41	ELASTOMERIC BEARING DETAILS - LOCATION 6
42-45	BRIDGE DECK PATCHING SURVEY - LOCATION 6
46	STAGE CONSTRUCTION DETAILS - LOCATION 7
47-48	BRIDGE DECK PATCHING SURVEY - LOCATION 7
49-50	STAGE CONSTRUCTION DETAILS - LOCATION 8
51-52	BRIDGE DECK PATCHING SURVEY - LOCATION 8
53	NEOPRENE EXPANSION JOINT DETAILS
54	BAR SPLICER AND PREFORMED JOINT SEAL DETAILS
55	ANCHOR BOLT DETAILS FOR ELASTOMERIC BEARINGS
56	GUIDELINES FOR INTERSTATE PAVEMENT MARKINGS
57	REFLECTOR MARKER, TYPE B
58	REFLECTOR MOUNTING DETAIL

THE FOLLOWING STANDARDS ARE A PART OF THESE PLANS AND ARE INCLUDED AFTER SHEET NO. 58:

- 000001 -02 STANDARD SYMBOLS, ABBREVIATIONS AND PATTERNS
- 701101 OFF-ROAD OPERATIONS, MULTILANE, LESS THAN 4.5M (15') AWAY, FOR SPEEDS >= 45 MPH
- 701106 OFF-ROAD OPERATIONS, MULTILANE, MORE THAN 4.5M (15') AWAY, FOR SPEEDS >= 45 MPH
- 701201 LANE CLOSURE, 2L 2W, DAY ONLY, ON-ROAD TO 600MM (24") OFF-ROAD, FOR SPEEDS >= 45 MPH
- 701301 LANE CLOSURE, 2L 2W, SHORT TERM OPERATIONS, FOR SPEEDS >= 45 MPH
- 701401 LANE CLOSURE, MULTILANE, FOR SPEEDS >= 45 MPH
- 701411 -01 LANE CLOSURE, MULTILANE, AT ENTRANCE OR EXIT RAMP, FOR SPEEDS >= 45 MPH
- 701426 LANE CLOSURE, MULTILANE, INTERMITTENT OR MOVING OPERATIONS, FOR SPEEDS >= 45 MPH
- 701601 -02 URBAN LANE CLOSURE, MULTILANE, 1W OR 2W WITH NON-TRAVERSABLE MEDIAN
- 702001 TRAFFIC CONTROL DEVICES
- 704001 TEMPORARY CONCRETE BARRIER

REVISIONS	NAME	DATE

ILLINOIS DEPARTMENT OF TRANSPORTATION
GENERAL NOTES
 &
INDEX OF SHEETS
DRAWN BY _____
CHECKED BY _____
DATE _____



MMO 12/17/98
 \94678CV\0023800.dgn
 MMO REV: 11-16-98
 1 2 3 4 5 6 7 8 9
 10 11 12 13 14 15 16 17 18 19 20 21 22 23 24 25 26 27 28 29 30 31 32 33 34 35 36 37 38 39 40 41 42 43 44 45 46 47 48 49 50 51 52 53 54 55 56 57 58 59 60 61 62 63 64

MMO 12/17/98

90% FED. 10% STATE

SFTY = 2A

RURAL URBAN RURAL

CONSTRUCTION TYPE CODE

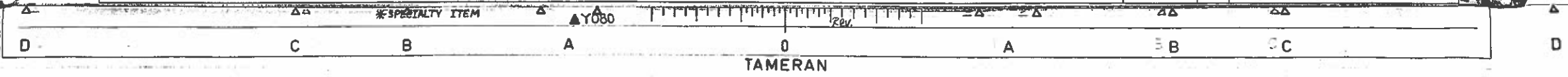
FBI	SECTION	COUNTY	FILE NO.	DATE
64		JEFFERSON	58	3
* D-7 BRIDGE DECK REPAIR 1999-1				

CODE NO	ITEM	UNIT	TOTAL QUANTITIES	CONSTRUCTION TYPE CODE							
				LOCATION 1	LOCATION 2	LOCATION 3	LOCATION 4	LOCATION 5	LOCATION 6	LOCATION 7	LOCATION 8
				041-0085 & 041-0086	041-0077 & 041-0078	041-0075 & 041-0076	041-0060	041-0067 & 041-0068	041-0089 & 041-0090	041-0087 & 041-0088	041-0081 & 041-0082
M2006110	BRIDGE DECK MICROSILICA CONCRETE OVERLAY	SO M	10584	866	1888	1120	806	1076	2402	1500	926
M2006200	BRIDGE DECK SCARIFICATION	SO M	10584	866	1888	1120	806	1076	2402	1500	926
M2016001	DECK SLAB REPAIR (FULL DEPTH, TYPE I)	SO M	20	5	2	2	2	5	2	1	1
M2016002	DECK SLAB REPAIR (FULL DEPTH, TYPE II)	SO M	79	13	18	9	7	13	11	6	2
M2016200	DECK SLAB REPAIR (PARTIAL)	SO M	434	95	68	62	33	26	76	63	11
M2047300	PROTECTIVE SHIELD	SO M	3636	742	742	466	1109	360			959
M3540200	PORTLAND CEMENT CONCRETE BASE COURSE WIDENING 200MM	SO M	11599	2188	2076	2188		2156	1022		1969
M4402110	BITUMINOUS CONCRETE REMOVAL (DECK)	SO M	10584	866	1888	1120	806	1076	2402	1500	926
M4402220	BITUMINOUS SHOULDER REMOVAL	SO M	11599	2188	2076	2188		2156	1022		1969
M5010240	CONCRETE REMOVAL	CU M	110.5	47.6		21	12.5	23.1	6.3		
M5030030	PREFORMED JOINT SEAL 64MM	METER	145	48.8		24		71.8			
M5030040	PREFORMED JOINT SEAL 102MM	METER	24.4		24						
M5030105	NEOPRENE EXPANSION JOINT 50MM	METER	32.6				32.6				
M5030115	NEOPRENE EXPANSION JOINT 65MM	METER	13.3						13.3		
M5030360	CONCRETE SUPERSTRUCTURE	CU M	110.5	47.6		21	12.5	23.1	6.3		
M5030390	BRIDGE DECK GROOVING	SO M	10063	818	1796	1060	766	1028	2282	1920	883
M5080205	REINFORCEMENT BARS, EPOXY COATED	KG	6690	3320		1120	700	1270	280		
M7030100	SHORT-TERM PAVEMENT MARKING	METER	500	70	84	74	29	78	46	58	61
M7030220	TEMPORARY PAVEMENT MARKING - LINE 100MM	METER	24108	3514	3980	3630	1336	3920	1940	2705	3083
M7031000	WORK ZONE PAVEMENT MARKING REMOVAL	SO M	2460	358	406	370	137	400	199	276	314
M7040200	RELOCATE TEMPORARY CONCRETE BARRIER	METER	31.5	4.2	4.2	4.2	2.1	4.2	4.2	4.2	4.2
M7040300	RELOCATE TEMPORARY CONCRETE BARRIER (STATE OWNED)	METER	1959.9	219.4	298.8	243.8	140.2	222.5	347.4	274.4	213.4
M7040400	TEMPORARY CONCRETE BARRIER (STATE OWNED)	METER	1972.1	219.4	298.8	243.8	140.2	234.7	347.4	274.4	213.4
* M7800605	EPOXY PAVEMENT MARKING - LINE 100MM	METER	10929	1574	1746	1616	555	1817	1092	1128	1401
M7830105	PAVEMENT MARKING REMOVAL	METER	10544	1554	1708	1592	538	1797	876	1096	1383
X0321468	PLUG EXISTING DECK DRAINS	EACH	50	8	16	8	2	2	8		6
Z0002600	BAR SPLICERS	EACH	197	76		44	22	44	11		
Z0048665	RAILROAD PROTECTIVE LIABILITY INSURANCE	L SUM	1		0.5				0.5		
Z0076600	TRAINEES	HOUR	500	62	63	62	63	62	62	62	63
50300310	ELASTOMERIC BEARING ASSEMBLY, TYPE I	EACH	48			12			36		
50300320	ELASTOMERIC BEARING ASSEMBLY, TYPE II	EACH	48		24	12			12		
M5050445	FURNISHING AND ERECTING STRUCTURAL STEEL	KG	12,540	3,020	1,780	4,840		3,570	3,400		
50500715	JACK AND REMOVE EXISTING BEARINGS	EACH	96		24	24			48		
67000400	ENGINEER'S FIELD OFFICE, TYPE A	CAL MO	7	0.9	0.9	0.9	0.7	0.9	0.9	0.9	0.9
67100100	MOBILIZATION	L SUM	1	0.2	0.1	0.1	0.1	0.2	0.1	0.1	0.1
70100420	TRAFFIC CONTROL AND PROTECTION, STANDARD 701411	EACH	4					2			2
70100450	TRAFFIC CONTROL AND PROTECTION, STANDARD 701201	L SUM	1		1						
70101005	TRAFFIC CONTROL AND PROTECTION, STANDARD 701401 (SPECIAL)	EACH	12	2	2	2	2	0.7	0.8	0.7	2
70102630	TRAFFIC CONTROL AND PROTECTION, STANDARD 701601	L SUM	1					0.5			0.5
70400300	TEMPORARY CONCRETE BARRIER, TERMINAL SECTION	EACH	15	2	2	2	1	2	2	2	2

FOR INFORMATION ONLY

REVISIONS	
NAME	DATE

ILLINOIS DEPARTMENT OF TRANSPORTATION
 SUMMARY OF QUANTITIES
 DRAWN BY
 CHECKED BY
 DATE



MMO 12/17/98
 946780\00298pa.dgn
 MMO REV. 11-17-98
DRAIN

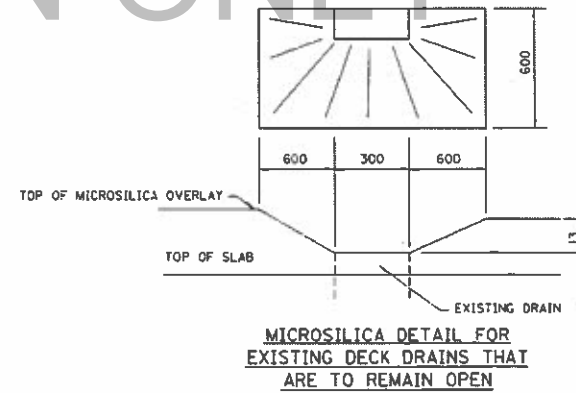
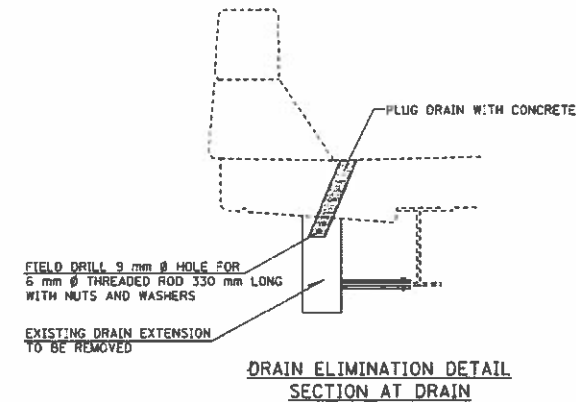
MMO 12/17/98

SCHEDULE OF QUANTITIES

STRUCTURE NUMBER	LENGTH (€ JOINT TO € JOINT)	EXISTING STRUCTURE WIDTH	AREA		BRIDGE DECK MICRO-SILICA CONCRETE OVERLAY	BRIDGE DECK SCARIFICATION	BITUMINOUS CONCRETE REMOVAL (DECK)	BRIDGE DECK GROOVING	PROTECTIVE SHIELD ELASTOMERIC BEARING ASSEMBLY TYPE 1	ELASTOMERIC BEARING ASSEMBLY TYPE 2	JACK AND REMOVE EXISTING BEARINGS	PLUG EXISTING DECK DRAINS	
			SO M	SD M									
SN 041-0085													
STAGE I	39.396	5.258	207.144	194		205	182						
STAGE II	39.396	6.477	255.168	239		228	227						
TOTAL	39.396	11.735	462.312	433		433	409						
SN 041-0086													
STAGE I	39.396	5.258	207.144	194		205	182						
STAGE II	39.396	6.477	255.168	239		228	227						
TOTAL	39.396	11.735	462.312	433		433	409						
SN 041-0077													
STAGE I	77.673	5.258	408.405	402		425	377			6	6		
STAGE II	77.673	6.477	503.088	542		519	519			6	6		
TOTAL	77.673	11.735	911.493	944		944	896	371		12	12		
SN 041-0078													
STAGE I	77.673	5.258	408.405	402		425	377			6	6		
STAGE II	77.673	6.477	503.088	542		519	519			6	6		
TOTAL	77.673	11.735	911.493	944		944	896	371		12	12		
SN 041-0075													
STAGE I	48.997	5.258	257.626	251		265	236			3	6		
STAGE II	48.997	6.477	317.354	309		295	294			3	6		
TOTAL	48.997	11.735	574.980	560		560	530			6	12		
SN 041-0076													
STAGE I	48.997	5.258	257.626	251		265	236			3	6		
STAGE II	48.997	6.477	317.354	309		295	294			3	6		
TOTAL	48.997	11.735	574.980	560		560	530			6	12		
SN 041-0060													
STAGE I	66.849	5.639	376.962	368		388	346						
STAGE II	66.849	5.706	448.289	438		418	418						
TOTAL	66.849	12.345	825.251	806		806	764						
SN 041-0067													
STAGE I	40.248	5.274	212.268	206		218	193						
STAGE II	40.248	8.038	323.513	314		302	302						
TOTAL	40.248	13.312	535.781	520		520	495	536					
SN 041-0068													
STAGE I	40.048	5.226	209.291	203		215	191						
STAGE II	40.048	9.094	364.197	353		341	341						
TOTAL	40.048	14.320	573.487	556		556	532	573					
SN 041-0089													
STAGE I	101.212	5.528	559.500	546		576	516			9	12		
STAGE II	101.212	6.629	670.934	655		625	625			9	12		
TOTAL	101.212	12.157	1230.434	1201		1201	1141	180		18	24		
SN 041-0090													
STAGE I	101.212	5.528	559.500	546		576	516			9	12		
STAGE II	101.212	6.629	670.934	655		625	625			9	12		
TOTAL	101.212	12.157	1230.434	1201		1201	1141	180		18	24		
SN 041-0087													
STAGE I	65.240	5.258	343.032	336		356	316						
STAGE II	65.240	6.477	422.559	414		394	394						
TOTAL	65.240	11.735	765.591	750		750	710						
SN 041-0088													
STAGE I	65.240	5.258	343.032	336		356	316						
STAGE II	65.240	6.477	422.559	414		394	394						
TOTAL	65.240	11.735	765.591	750		750	710						
SN 041-0081													
STAGE I	34.944	5.258	183.736	177		187	166						
STAGE II	34.944	7.087	247.648	239		229	229						
TOTAL	34.944	12.345	431.384	416		416	394	431					
SN 041-0082													
STAGE I	35.103	5.359	188.117	182		192	172						
STAGE II	35.103	9.676	339.657	328		318	317						
TOTAL	35.103	15.035	527.774	510		510	489	528					
TOTAL				10584		10584	10584	10053	3636	46	46	96	50

SECTION	COUNTY	SHEET NO.	TOTAL SHEETS
64	JEFFERSON	58	4

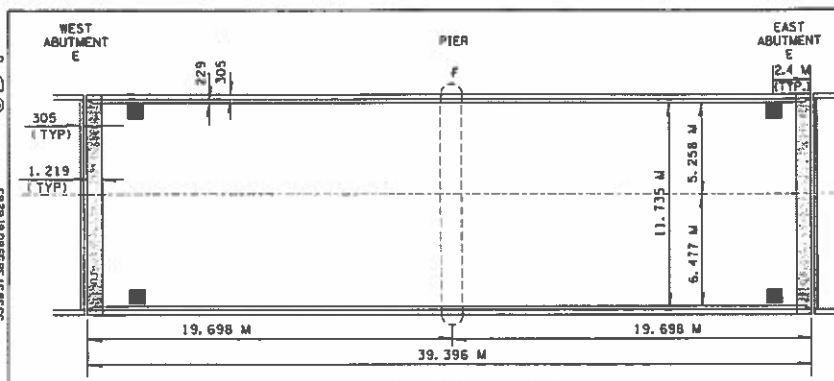
D-7 BRIDGE DECK REPAIR 1999-1



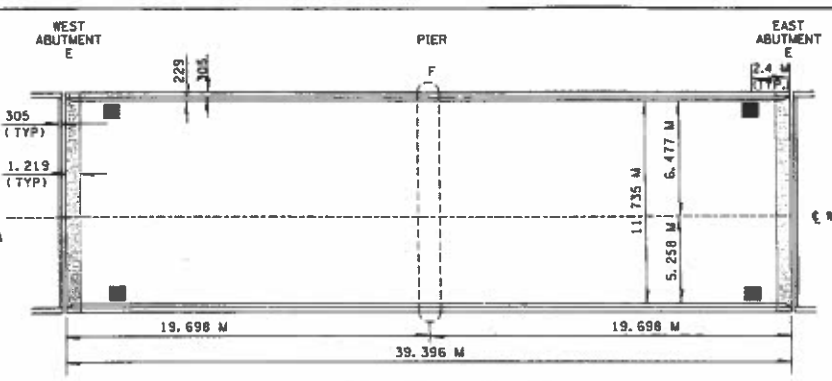
REVISIONS		ILLINOIS DEPARTMENT OF TRANSPORTATION SCHEDULE OF QUANTITIES & DECK DRAIN DETAIL DRAWN BY CHECKED BY DATE
NAME	DATE	

TAMERAN

MMO 12/17/98
 \94678d\00298pa.dgn
 MMO REV: 10-27-98
 S D 1

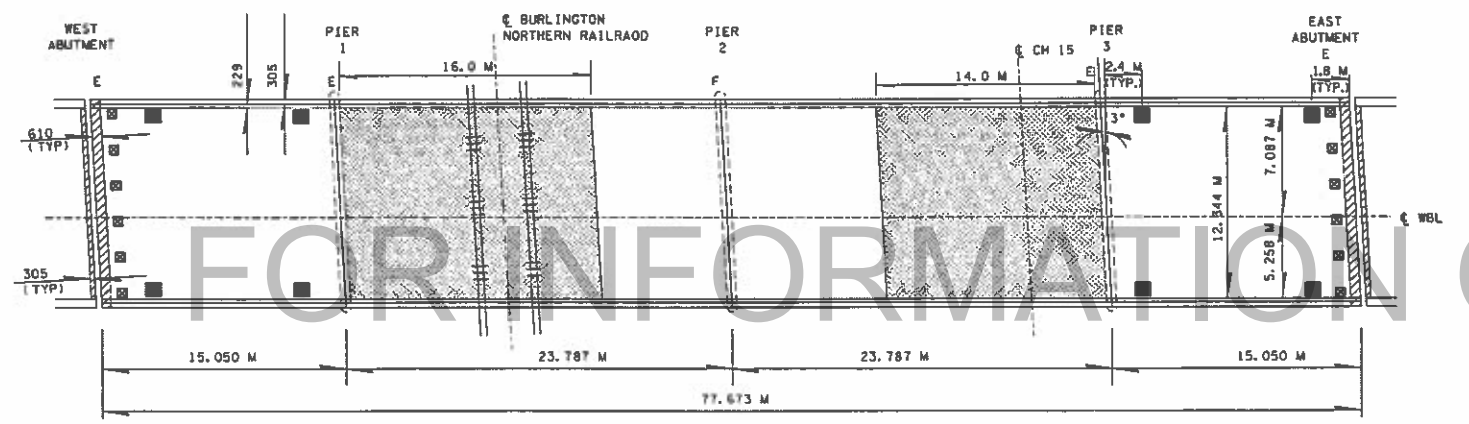


SN 041-0085 LOCATION 1

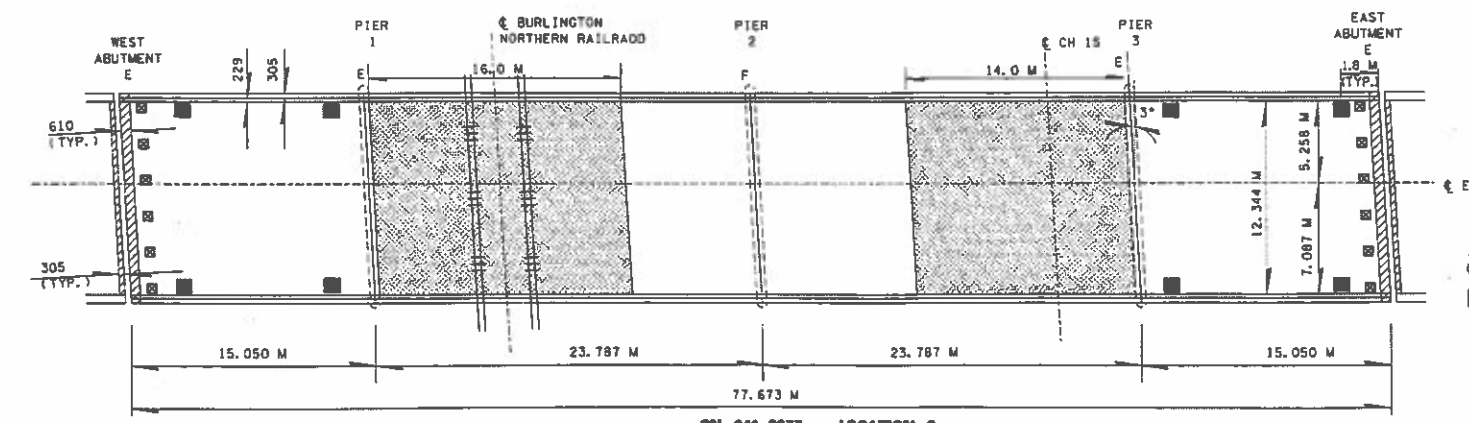


SN 041-0086 LOCATION 1

SECTION	COUNTY	NO.	REV.
64	JEFFERSON	58	5
D-T BRIDGE DECK REPAIR 1999-1			



SN 041-0078 LOCATION 2



SN 041-0077 LOCATION 2

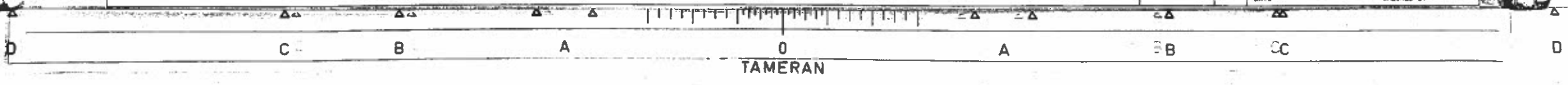
LEGEND

- EXPANSION JOINT TO BE REPLACED
- EXPANSION JOINT WITH CONCRETE PROTECTION TO REMAIN IN PLACE
- PROTECTIVE SHIELD
- EXPANSION BEARINGS TO BE REPLACED WITH NEW ELASTOMERIC BEARINGS
- PLUG EXISTING DECK DRAINS

NOTE: NEW MICROSILICA CONCRETE OVERLAY ON EACH STRUCTURE

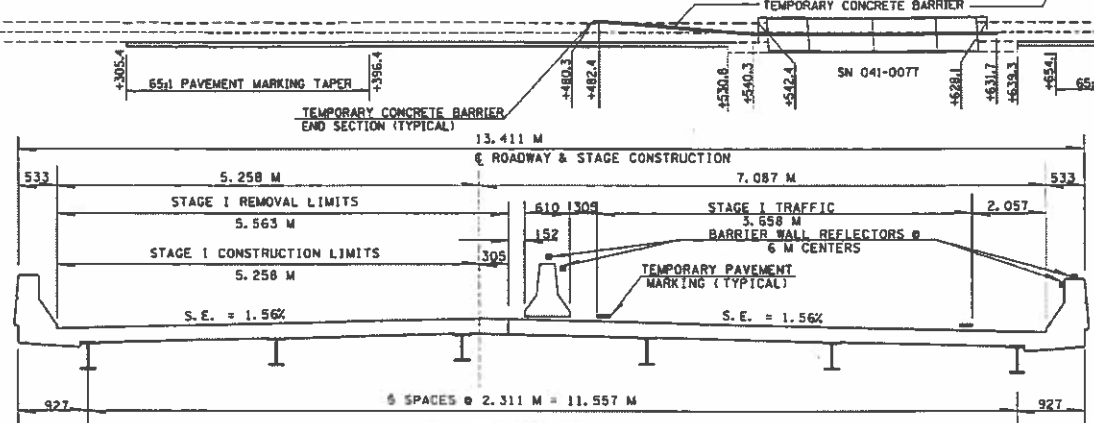
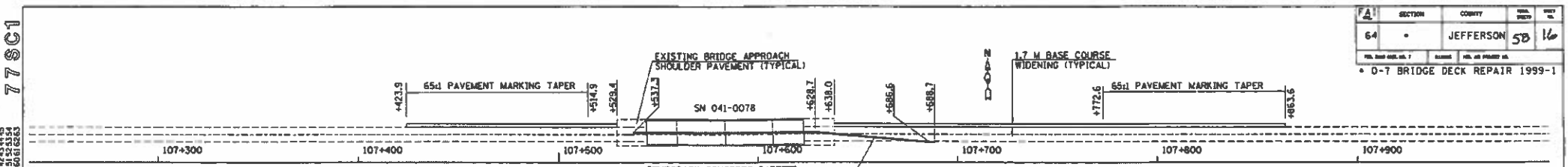
REVISIONS	NAME	DATE

ILLINOIS DEPARTMENT OF TRANSPORTATION
 EXISTING STRUCTURE DETAILS
 SN 041-0085 & SN 041-0086
 SN 041-0077 & SN 041-0078
 LOCATIONS 1 & 2
 DRAWN BY _____
 CHECKED BY _____

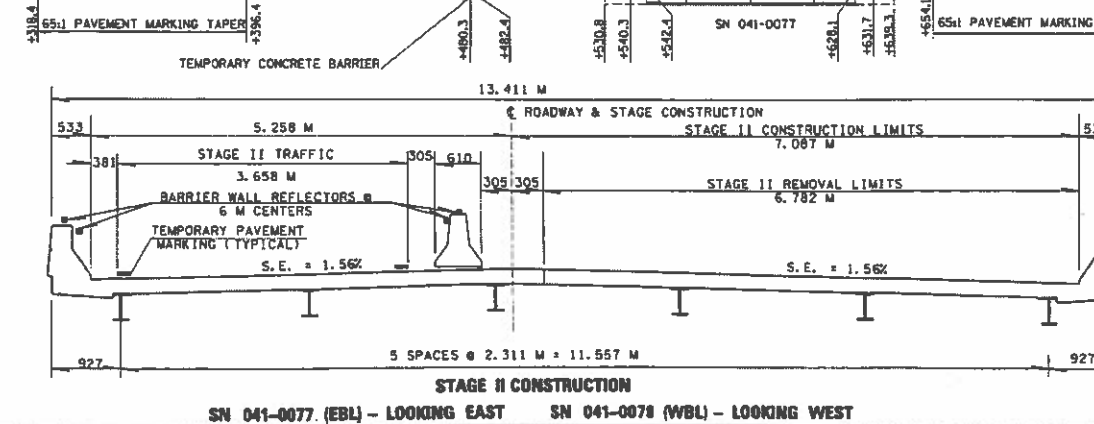
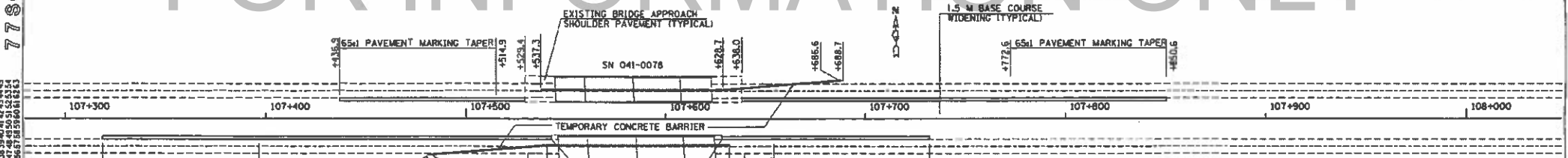


MMO 12/14/98
 \94678d\00286pa.dgn
 MMO REV: 04-22-98
 77SC1

MMO 12/14/98
 \94678d\00286pa.dgn
 MMO REV: 04-22-98
 77SC2



STAGE I CONSTRUCTION
 SN 041-0077 (EBL) - LOOKING EAST SN 041-0078 (WBL) - LOOKING WEST



STAGE II CONSTRUCTION
 SN 041-0077 (EBL) - LOOKING EAST SN 041-0078 (WBL) - LOOKING WEST

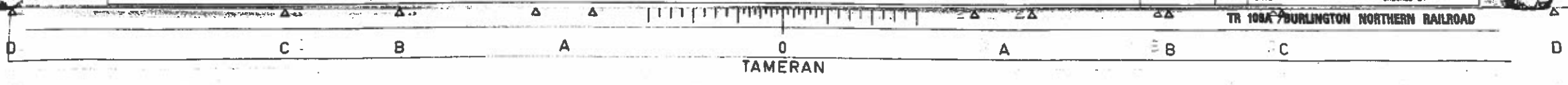
SECTION	COUNTY	DATE	SCALE
64	JEFFERSON	5/8	1/6
D-7 BRIDGE DECK REPAIR 1999-1			

ITEM	UNIT	SN 041-0077		SN 041-0078		TOTAL
		STAGE I	STAGE II	STAGE I	STAGE II	
BIT SHOULDER REMOVAL	50 M	563.0	492.0	563.0	458.0	2076.0
PCC BASE COURSE WIDENING 200MM	50 M	563.0	492.0	563.0	458.0	2076.0
TEMP CONC BARRIER (SO)	METER	149.4		149.4		298.8
TEMP CONC BARRIER TERMINAL SECT	EACH	1.0		1.0		2.0
RELOCATE TEMP CONC BARRIER (SO)	METER		149.4		149.4	298.8
RELOCATE TEMP CONC BARRIER	METER		2.1		2.1	4.2
TRAF CONT & PROT 701401 (SPL)	EACH	1.0		1.0		2.0

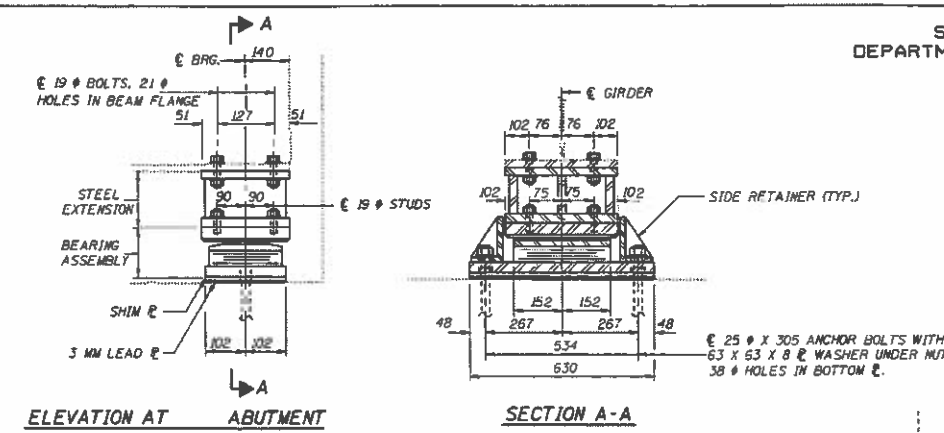
NOTES
 VERTICAL PANELS SHALL BE PLACED ALONG THE WIDENING AT 15 M CENTERS
 USE THIS DETAIL IN CONJUNCTION WITH STANDARD 701401. DETAILS SHOWN ON STANDARD 701401 HAVE BEEN OMITTED FROM THIS SHEET FOR CLARITY.
 THE BASE COURSE WIDENING SHALL BE CONSTRUCTED AT FULL WIDTH TO THE LIMITS AS SHOWN ON THE PLANS. THIS QUANTITY WILL ALLOW FOR A 305 MINIMUM DISTANCE BETWEEN THE OUTSIDE EDGELINE OF THE TEMPORARY PAVEMENT MARKING AND THE EDGE OF THE WIDENING. A PAVEMENT MARKING TAPER SHALL BE PLACED AS SHOWN AT THE APPROPRIATE TAPER RATIO.

EQUATION
 STATION 107+568.768 (METRIC) =
 STATION 2031+94.04 (ENGLISH)
 METRIC STATIONING DERIVED FROM
 STRAIGHT LINE DIAGRAMS - NOT TO
 BE USED FOR FUTURE REFERENCE

REVISIONS	DATE	ILLINOIS DEPARTMENT OF TRANSPORTATION
NAME	DATE	STAGE CONSTRUCTION DETAILS
		SN 041-0077 & 041-0078
		LOCATION 2
		DRAWN BY
		CHECKED BY
		DATE



MMO 12/10/98
 1
2
3
4
5
6
7
8
9
10
11
12
13
14
15
16
17
18
19
20
21
22
23
24
25
26
27
28
29
30
31
32
33
34
35
36
37
38
39
40
41
42
43
44
45
46
47
48
49
50
51
52
53
54
55
56
57
58
59
60
61
62
63



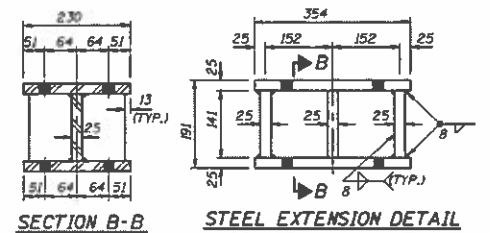
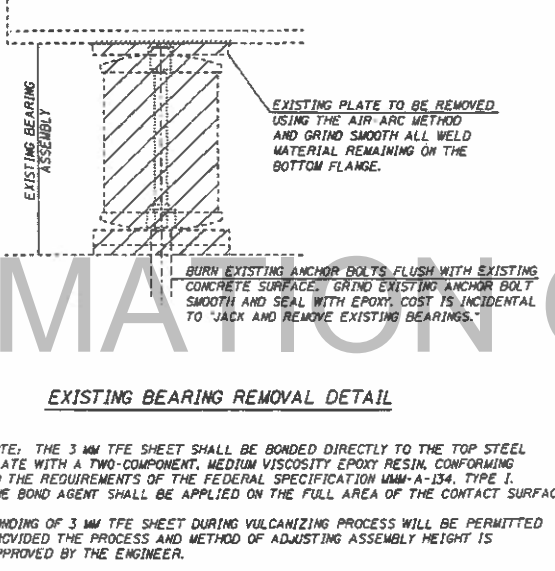
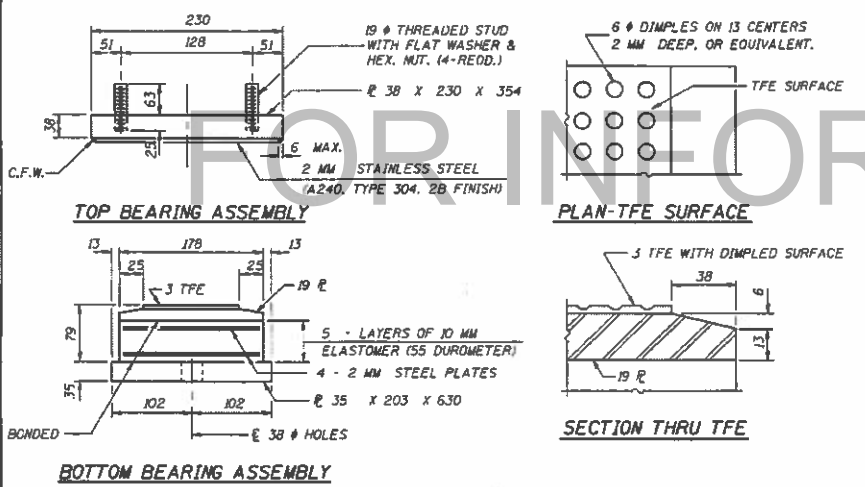
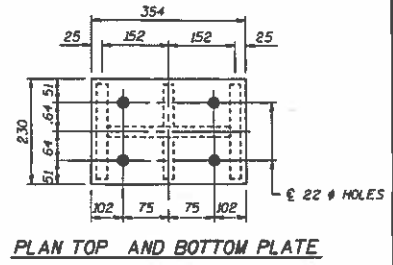
STATE OF ILLINOIS
 DEPARTMENT OF TRANSPORTATION

GIRDER REACTIONS

RL	(KN)	91.6
RP	(KN)	167.7
RMP	(KN)	48.5
R (TOTAL)	(KN)	307.8

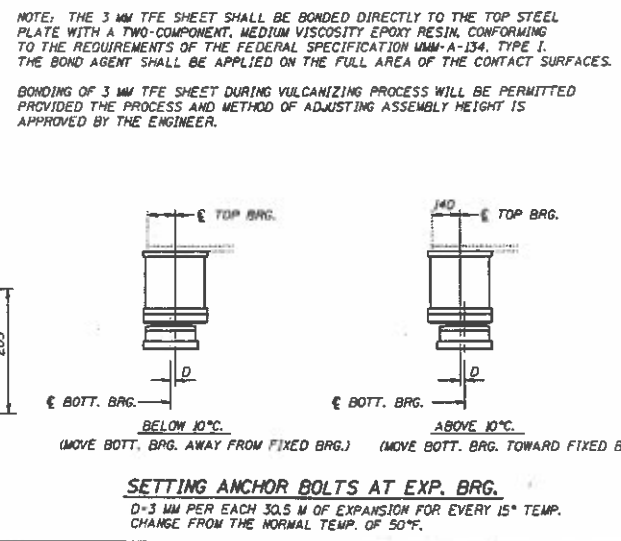
NOTES
 DIAPHRAGM REMOVAL AND REPLACEMENT MAY BE REQUIRED TO FACILITATE DRILLING HOLES. COST SHALL BE INCLUDED IN THE COST OF "FURNISHING AND ERECTING STRUCTURAL STEEL".
 NEW STEEL EXTENSIONS, SIDE RETAINERS, SHIM #S, CONNECTION BOLTS, AND ANCHOR BOLTS ARE INCLUDED IN "FURNISHING AND ERECTING STRUCTURAL STEEL".
 SEE "ANCHOR BOLT DETAILS" SHEET FOR ANCHOR BOLT INSTALLATION. PRIOR TO ORDERING ANY MATERIAL, THE CONTRACTOR SHALL VERIFY IN THE FIELD ALL BEARING HEIGHT AND SHIM THICKNESS DIMENSIONS. MIN. JACK CAPACITY = 27.2 METRIC TONS.

FAI	SECTION	COUNTY	SHEET	OF
64	*	JEFFERSON	56	17
* D-7 BRIDGE DECK REPAIR 1999-1				



BILL OF MATERIAL

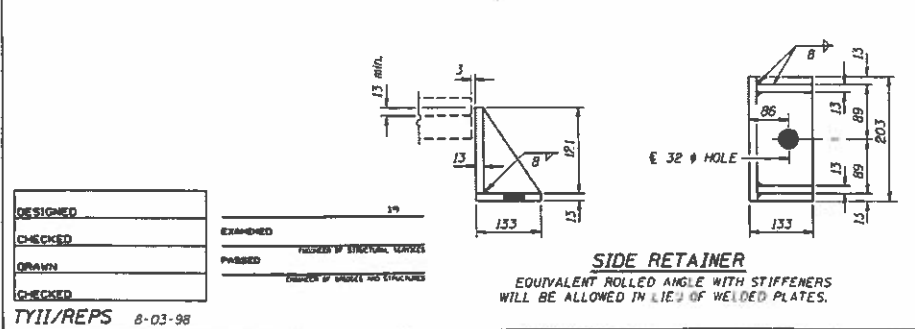
ITEM	UNIT	TOTAL
ELASTOMERIC BEARING ASSEMBLY TYPE II	EACH	24
FURNISHING AND ERECTING STRUCTURAL STEEL	KG.	1780



ESTIMATED WEIGHT OF STRUCTURAL STEEL PER BEARING - 74 KG.

REVISIONS	NAME	DATE

ILLINOIS DEPARTMENT OF TRANSPORTATION
 ELASTOMERIC BEARING DETAILS
 EAST AND WEST ABUTMENTS
 SM 041-0077 & 041-0078
 LOCATION 2
 DRAWN BY _____
 CHECKED BY _____



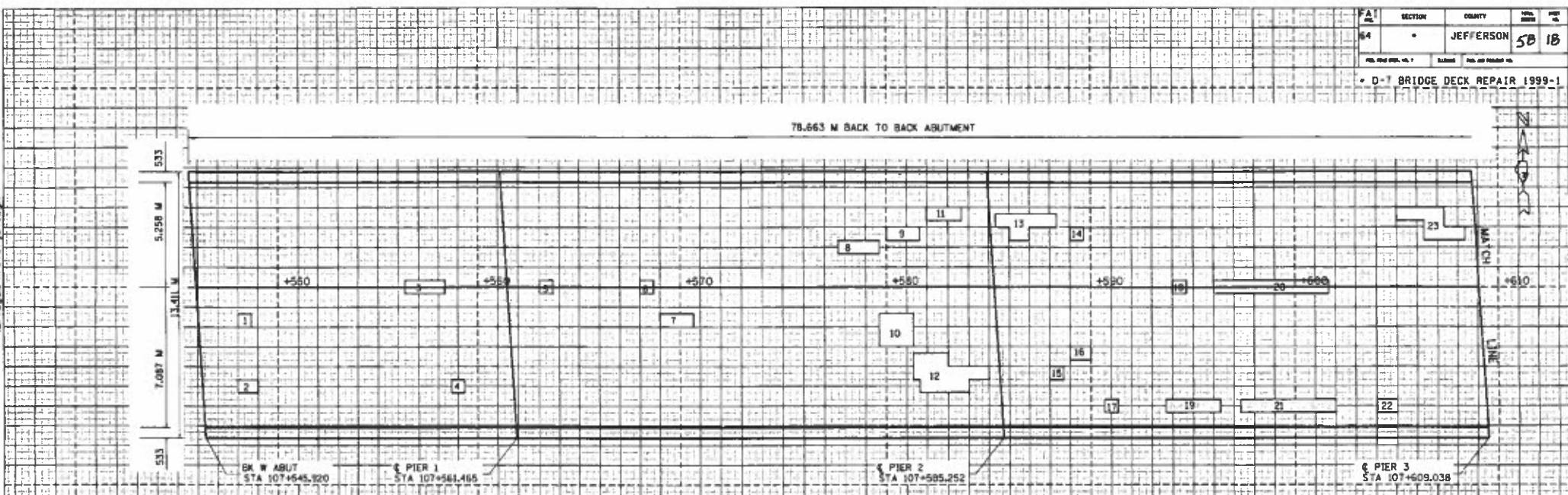
MMO 12/10/98

DESIGNED	EXAMINED
CHECKED	REVISIONS
DRAWN	PASSED
CHECKED	DRIVER OF BRIDGE AND TRUCKS
TYII/REPS	8-03-98



MMD 12/17/98
D:\projects\mstr\ref.dgn

FAI	SECTION	COUNTY	SHEET NO.
64	JEFFERSON	58	18
D-7 BRIDGE DECK REPAIR 1999-1			



PATCH NO.	SIZE	DECK SLAB REPAIR DEPTH	PATCH NO.	SIZE	DECK SLAB REPAIR DEPTH	PATCH NO.	SIZE	DECK SLAB REPAIR DEPTH	PATCH NO.	SIZE	DECK SLAB REPAIR DEPTH
1	0.7 x 0.7	0.5	22	1.0 x 0.7	0.7						
2	1.0 x 0.7	0.7	23	2.3 x 0.7	1.6						
3	2.0 x 0.7	1.4		1.0 x 1.0	1.0						
4	0.7 x 0.7	0.5		1.0 x 0.7	0.7						
5	0.7 x 0.7	0.5	24	3.0 x 0.7		2.1					
6	0.7 x 0.7	0.5	25	0.7 x 0.7	0.5						
7	1.7 x 0.7	1.2	26	1.0 x 0.7	0.7						
8	2.0 x 0.7	1.4	27	0.7 x 0.7	0.5						
9	1.7 x 0.7	1.2	28	0.7 x 0.7	0.5						
10	1.7 x 1.7	2.9	29	1.0 x 1.3	1.3						
11	1.7 x 0.7	1.2		1.7 x 0.7	1.2						
12	1.7 x 1.3	2.2		2.0 x 0.7	1.4						
	1.3 x 0.7	0.9		1.3 x 1.7	2.2						
	1.0 x 1.3	1.3		1.0 x 1.0	1.0						
	1.0 x 0.7	0.7	30	1.0 x 0.7	0.7						
13	3.0 x 0.7	2.1		0.3 x 0.3	0.1						
	1.0 x 0.7	0.7		1.0 x 1.3	1.3						
14	0.7 x 0.7	0.5									
15	0.7 x 0.7	0.5		TOTAL	42.0	0.0	7.3	0.0			
16	1.0 x 0.7	0.7		PARTIAL DEPTH			42.0				
17	0.7 x 0.7	0.5		USE	42	50 M					
18	0.7 x 0.7	0.5									
19	2.7 x 0.7										
20	5.7 x 0.7	4.0									
21	4.7 x 0.7										

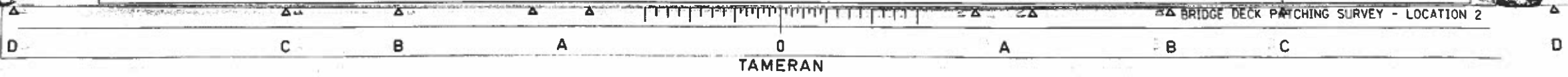
PATCHING SURVEY
BY PENETRADAR CORP.
JUNE 9, 1998

The Engineer shall mark the actual deck repairs on the as-built plans.

FAI ROUTE 64 EBL
JEFFERSON COUNTY
SECTION 41-6HVB-1
TR 108A & BN RAILROAD
2.0 MILES W WOODLAWN
INTERCHANGE
SHEET 1 OF 2
S.N. 041-0077

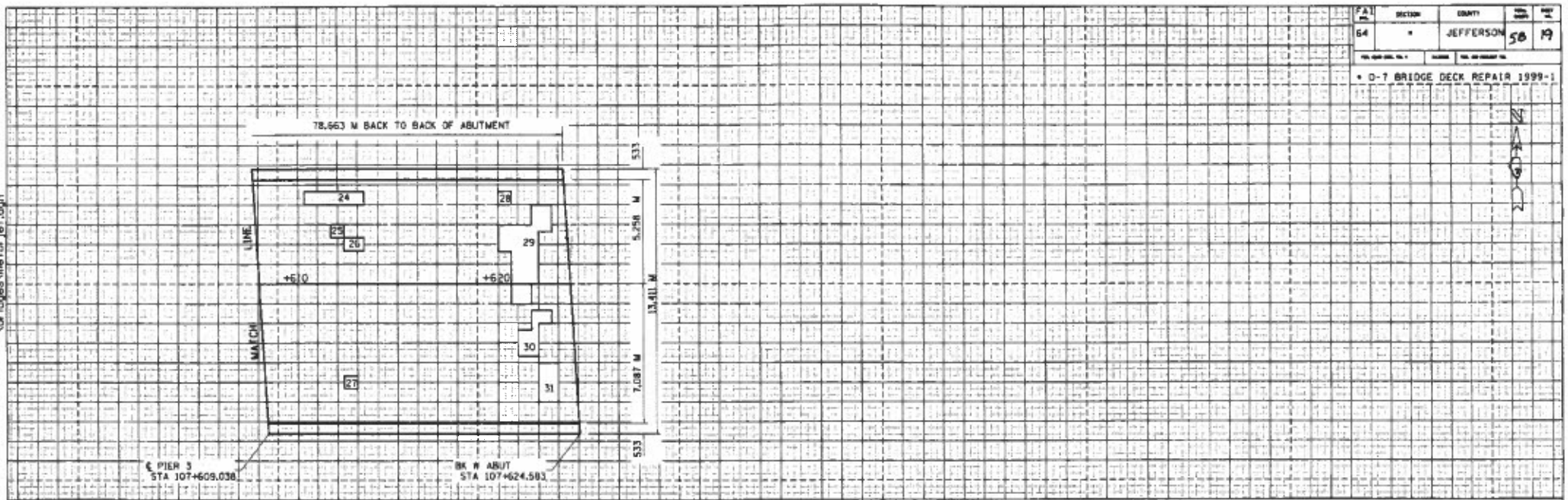
THE SIZES SHOWN
GRAPHICALLY ABOVE
ARE APPROXIMATE.
SEE THIS TABLE
FOR ACTUAL SIZES.

77



M40_12/17/98
N:\projects\m40\br\le f.dgn

FAI	SECTION	COUNTY	SHEET NO.	TOTAL SHEETS
64		JEFFERSON	58	19
* D-7 BRIDGE DECK REPAIR 1998-1				



PATCH NO.	SIZE	DECK SLAB REPAIR (PART DEPTH)				PATCH NO.	SIZE	DECK SLAB REPAIR (PART DEPTH)				PATCH NO.	SIZE	DECK SLAB REPAIR (PART DEPTH)					
		SO	M	W (FD TY 1)	M (FD TY 2)			SO	M	W (FD TY 1)	M (FD TY 2)			SO	M	W (FD TY 1)	M (FD TY 2)		

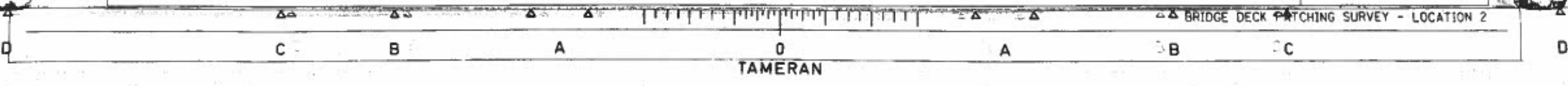
PATCHING SURVEY
BY PENETRADAR CORP.
JUNE 9, 1998

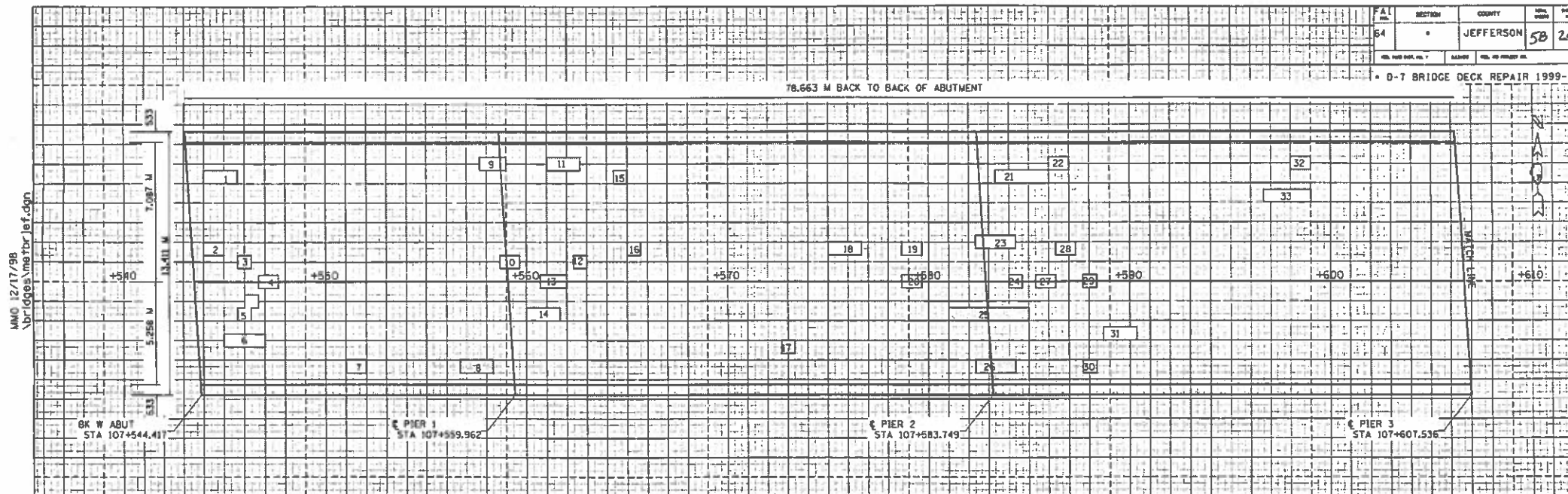
The Engineer shall mark the actual deck repairs on the as-built plans.

FAI ROUTE 64 EBL
JEFFERSON COUNTY
SECTION 41-6HVB-1
TR 108A & BN RAILROAD
2.0 MILES W WOODLAWN
INTERCHANGE
SHEET 2 OF 2
S.N. 041-0077

THE SIZES SHOWN
GRAPHICALLY ABOVE
ARE APPROXIMATE.
SEE THIS TABLE
FOR ACTUAL SIZES.

77





SECTION	COUNTY	SHEET NO.	TOTAL SHEETS
64	JEFFERSON	58	20

PATCH NO.	SIZE	DECK SLAB REPAIR		DECK SLAB REPAIR (PD TY 2)	PATCH NO.	SIZE	DECK SLAB REPAIR		DECK SLAB REPAIR (PD TY 2)	PATCH NO.	SIZE	DECK SLAB REPAIR		DECK SLAB REPAIR (PD TY 2)
		DEPTH	TYPE				DEPTH	TYPE				DEPTH	TYPE	
1	1.7 x 0.7			1.2	25	4.0 x 0.7			2.8					
2	1.0 x 0.7	0.7			26	2.0 x 0.7			1.4					
3	0.7 x 0.7	0.5			27	1.0 x 0.7	0.7							
4	1.0 x 0.7	0.7			28	1.0 x 0.7	0.7							
5	0.7 x 0.7	0.5			29	0.7 x 0.7	0.5							
6	2.0 x 0.7	1.4			30	0.7 x 0.7	0.5							
7	1.0 x 0.7	0.7			31	1.7 x 0.7	1.2							
8	1.7 x 0.7			1.2	32	1.0 x 0.7			0.7					
9	1.3 x 0.7			0.9	33	2.3 x 0.7	1.6							
10	1.0 x 0.7	0.7			34	1.3 x 0.7	0.9							
11	1.7 x 0.7	1.2			35	3.3 x 0.7	2.3							
12	0.7 x 0.7	0.5			36	0.7 x 0.7	0.5							
13	1.3 x 0.7	0.9			37	1.3 x 0.7	0.9							
14	1.7 x 0.7	1.2			38	1.0 x 0.7	0.7							
15	0.7 x 0.7		0.5		39	2.0 x 0.7			1.4					
16	0.7 x 0.7	0.5			40	1.3 x 0.7			0.9					
17	0.7 x 0.7		0.5		TOTAL	26.4	1.5	11.2	0.0					
18	1.7 x 0.7	1.2			PARTIAL DEPTH	-	-	26.4	-					
19	1.0 x 0.7	0.7			USE	26	50 M	-	-					
20	1.0 x 0.7	0.7			FULL DEPTH, TYPE 1	=	1.5	-	-					
21	2.7 x 0.7	1.9			USE	2	50 M	-	-					
22	1.0 x 0.7			0.7	FULL DEPTH, TYPE 2	=	11.2	-	-					
23	2.0 x 0.7	1.4			USE	11	50 M	-	-					
24	0.7 x 0.7	0.5												

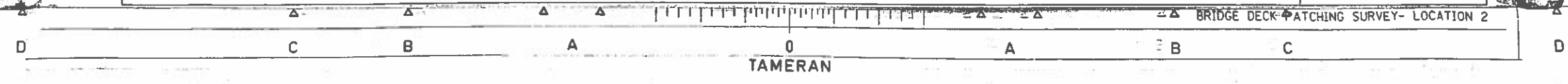
PATCHING SURVEY
BY PENETRADOR CORP.
JUNE 9, 1998

The Engineer shall mark the actual deck repairs on the as-built plans.

FAI ROUTE 64 WBL
JEFFERSON COUNTY
SECTION 41-6HVB-1
TR 108A & BN RAILROAD
2.0 MILES W WOODLAWN
INTERCHANGE
SHEET 1 OF 2
S.N. 041-0078

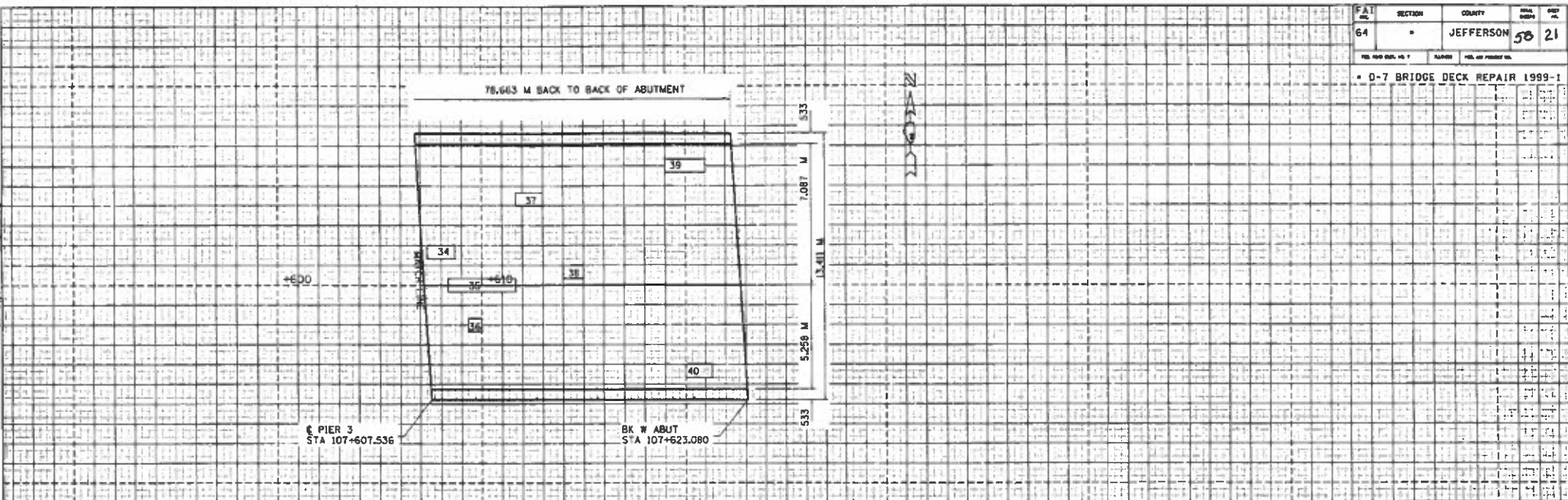
THE SIZES SHOWN
GRAPHICALLY ABOVE
ARE APPROXIMATE.
SEE THIS TABLE
FOR ACTUAL SIZES.

78



MAD 12/17/98
 Ver: dges: user: br: 16: f: dgp

FAI NO.	SECTION	COUNTY	PLAN NO.	SHEET NO.
64		JEFFERSON	58	21
D-7 BRIDGE DECK REPAIR 1999-1				



PATCH NO.	SIZE	DECK SLAB REPAIR (PART DEPTH)	DECK SLAB REPAIR (PART DEPTH)	PATCH NO.	SIZE	DECK SLAB REPAIR (PART DEPTH)	DECK SLAB REPAIR (PART DEPTH)	PATCH NO.	SIZE	DECK SLAB REPAIR (PART DEPTH)	DECK SLAB REPAIR (PART DEPTH)	PATCH NO.	SIZE	DECK SLAB REPAIR (PART DEPTH)	DECK SLAB REPAIR (PART DEPTH)

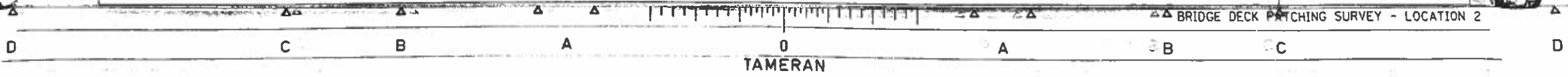
PATCHING SURVEY
 BY PENETRADAR CORP.
 JUNE 9, 1998

The Engineer shall mark the actual deck repairs on the as-built plans.

THE SIZES SHOWN GRAPHICALLY ABOVE ARE APPROXIMATE. SEE THIS TABLE FOR ACTUAL SIZES.

FAI ROUTE 64 WBL
 JEFFERSON COUNTY
 SECTION 41-6HVB-1
 TR 108A & BN RAILROAD
 2.0 MILES W WOODLAWN INTERCHANGE
 SHEET 2 OF 2
 S.N. 041-0078

78



BRIDGE DECK PATCHING SURVEY - LOCATION 2