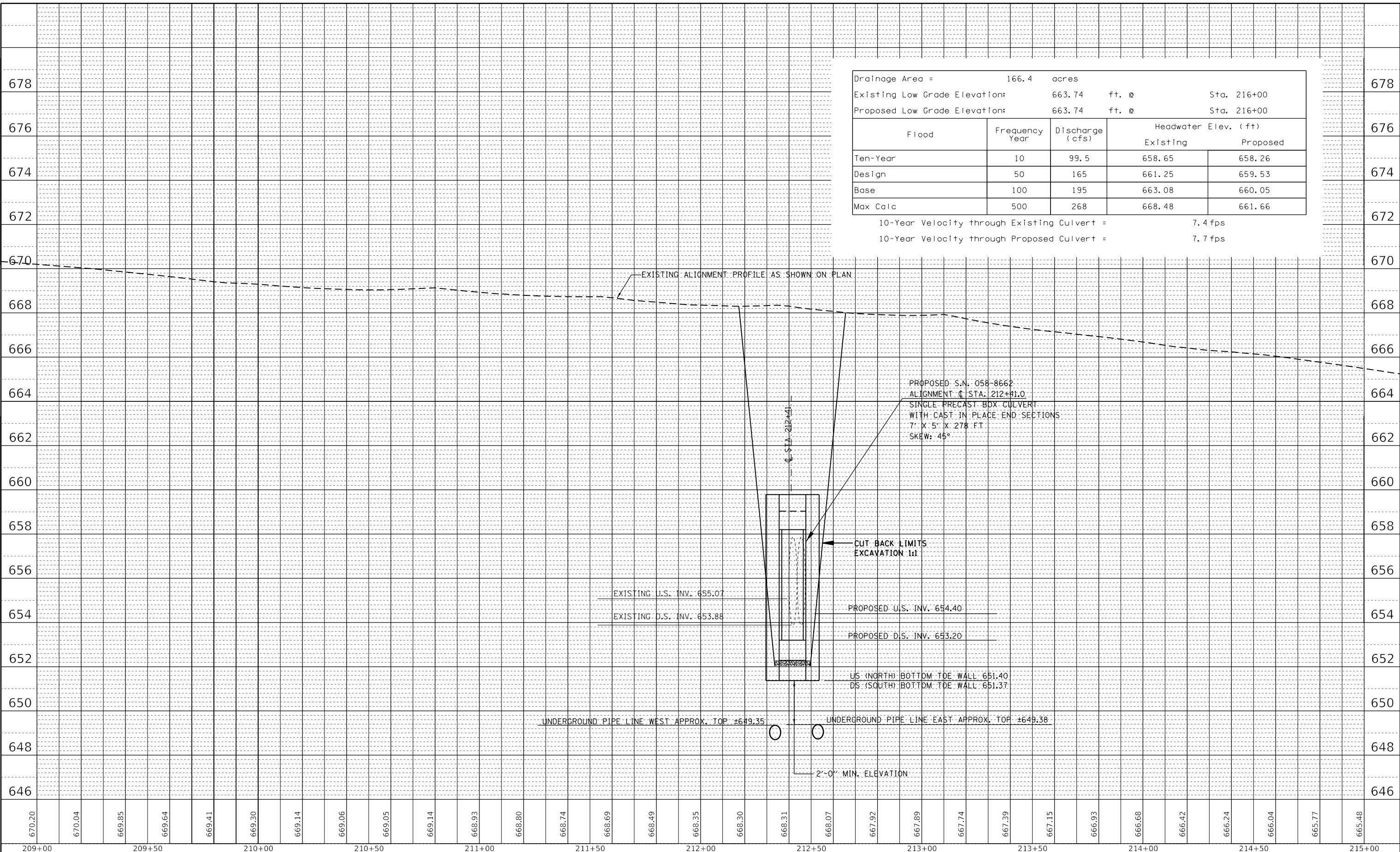


PLAN	SURVEYED	DATE
	PLOTTED	BY
	ALIGNMENT CHECKED	
	NOTE BOOK NO.	
	CADD FILE NAME	

PROFILE	SURVEYED	DATE
	PLOTTED	BY
	GRADES CHECKED	
	NOTE BOOK NO.	
	STRUCTURE NOTATION	
	STRUCTURE NOTATION	

MODEL: Default
 FILE NAME: p:\11\0848\BID\ITE\Illinois\pwr\WID\07\Documents\DOT Office\Sheet\71848\Sheet1.dgn



Drainage Area =	166.4	acres		
Existing Low Grade Elevation:	663.74	ft. @	Sta. 216+00	
Proposed Low Grade Elevation:	663.74	ft. @	Sta. 216+00	
Flood	Frequency Year	Discharge (cfs)	Headwater Elev. (ft)	
			Existing	Proposed
Ten-Year Design	10	99.5	658.65	658.26
Base	50	165	661.25	659.53
Max Calc	100	195	663.08	660.05
	500	268	668.48	661.66

10-Year Velocity through Existing Culvert = 7.4 fps
 10-Year Velocity through Proposed Culvert = 7.7 fps

**STATE OF ILLINOIS
 DEPARTMENT OF TRANSPORTATION**

**PROFILE SHEET
 S.N. 058-8662**

REVISIONED SHEET 1-2-2019

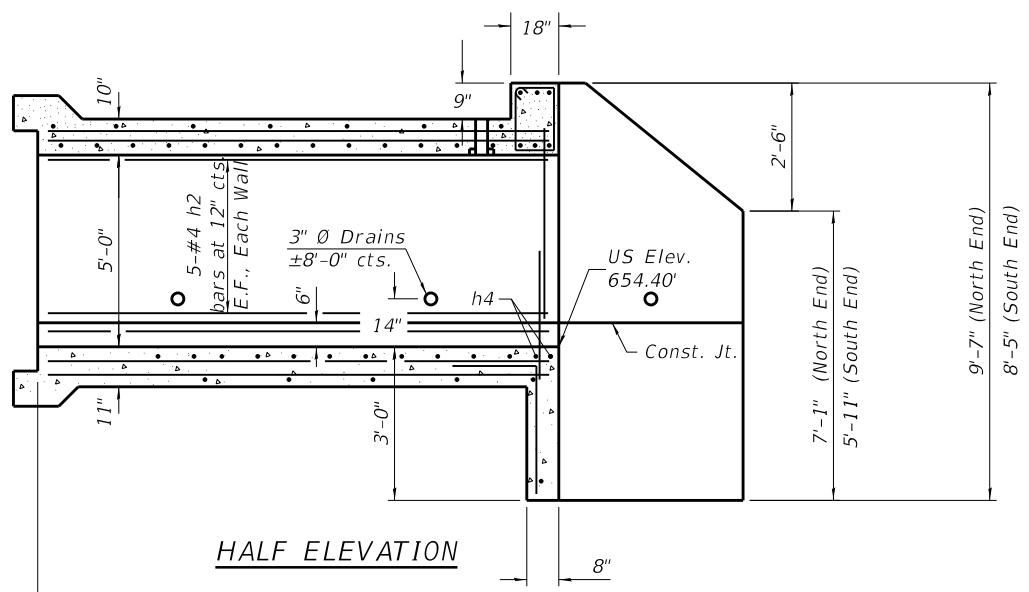
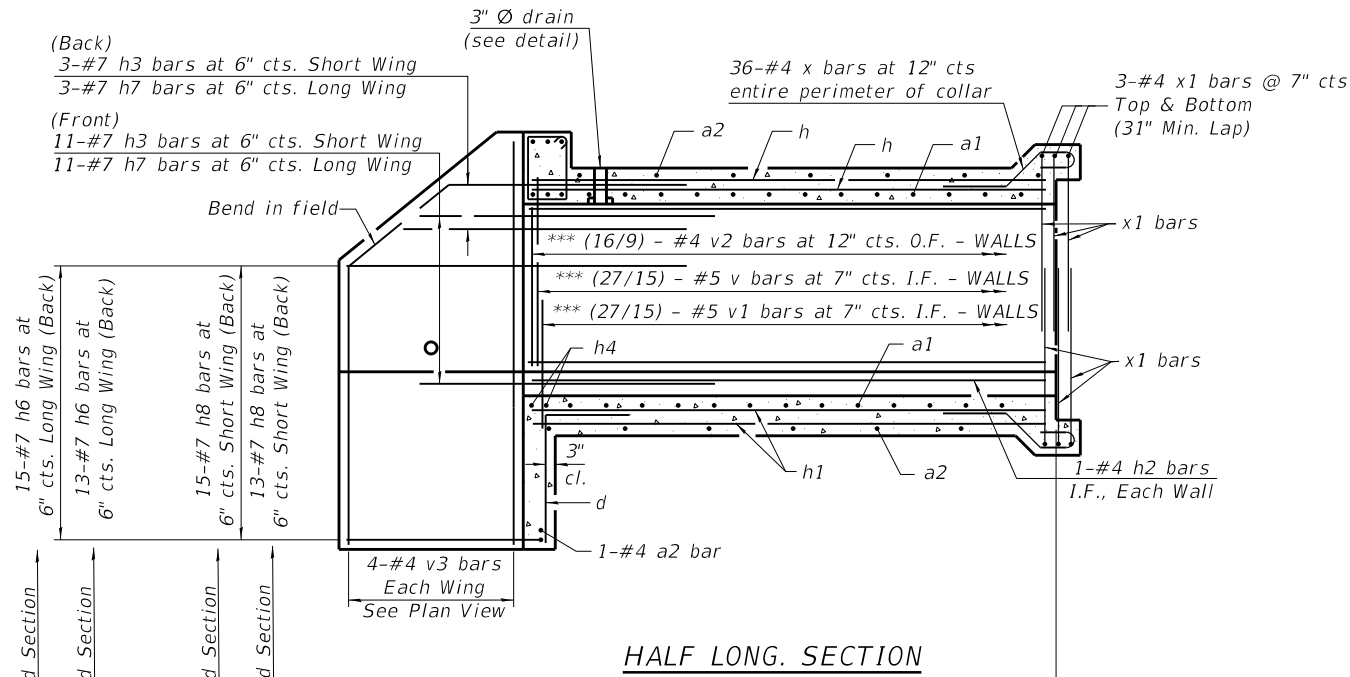
USER NAME = steffemk	DESIGNED -	REVISED -
PLOT SCALE = 40.0000' / in.	DRAWN -	REVISED -
PLOT DATE = 12/21/2018	CHECKED -	REVISED -
	DATE -	REVISED -

SCALE: SHEET OF SHEETS STA. TO STA.

F.A.U. RTE.	SECTION	COUNTY	TOTAL SHEETS	SHEET NO.
7381	13,14CR	MACON	16	9
CONTRACT NO. 74849				
ILLINOIS FED. AID PROJECT				

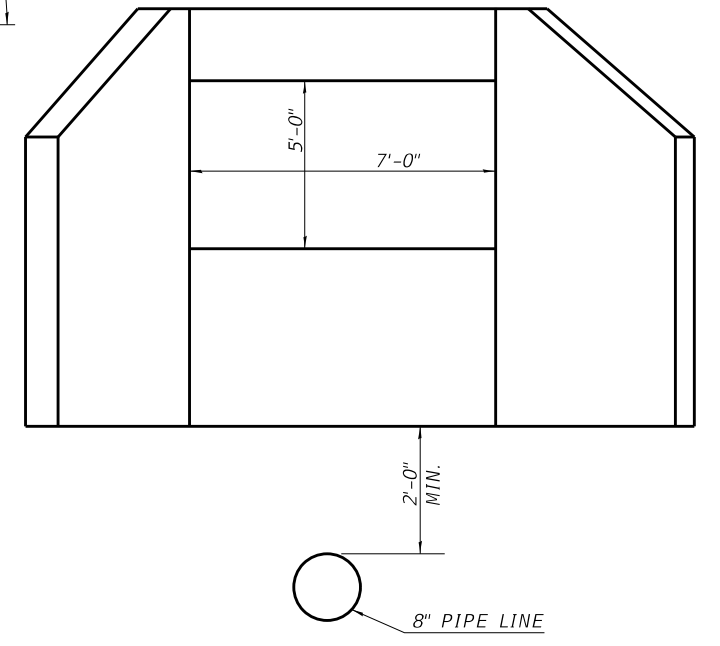
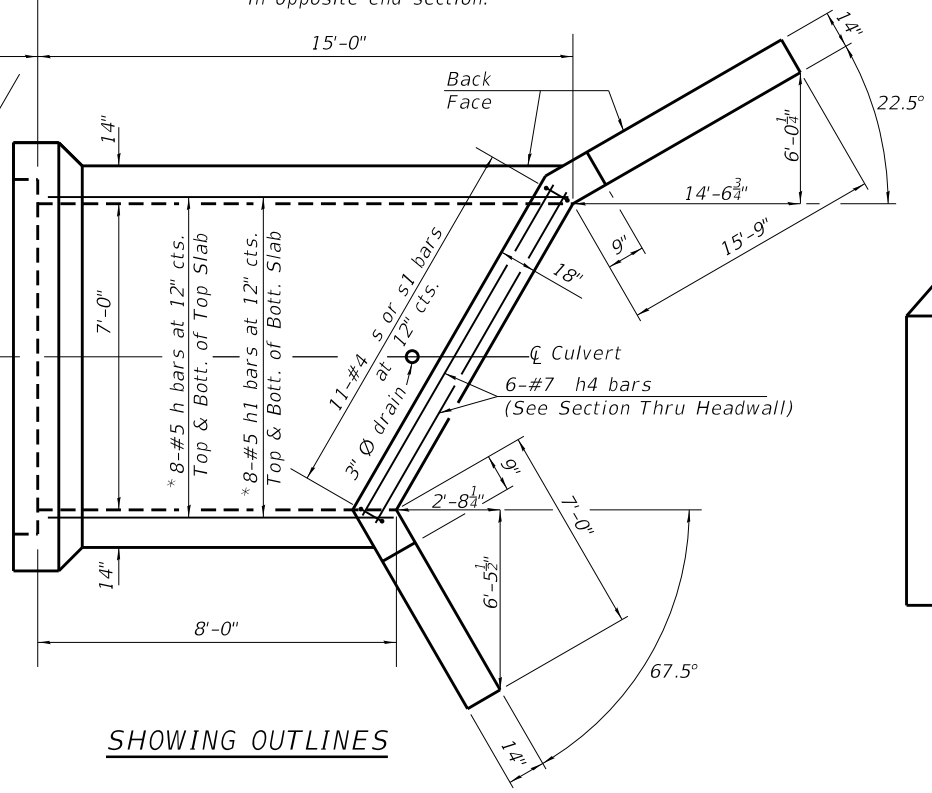
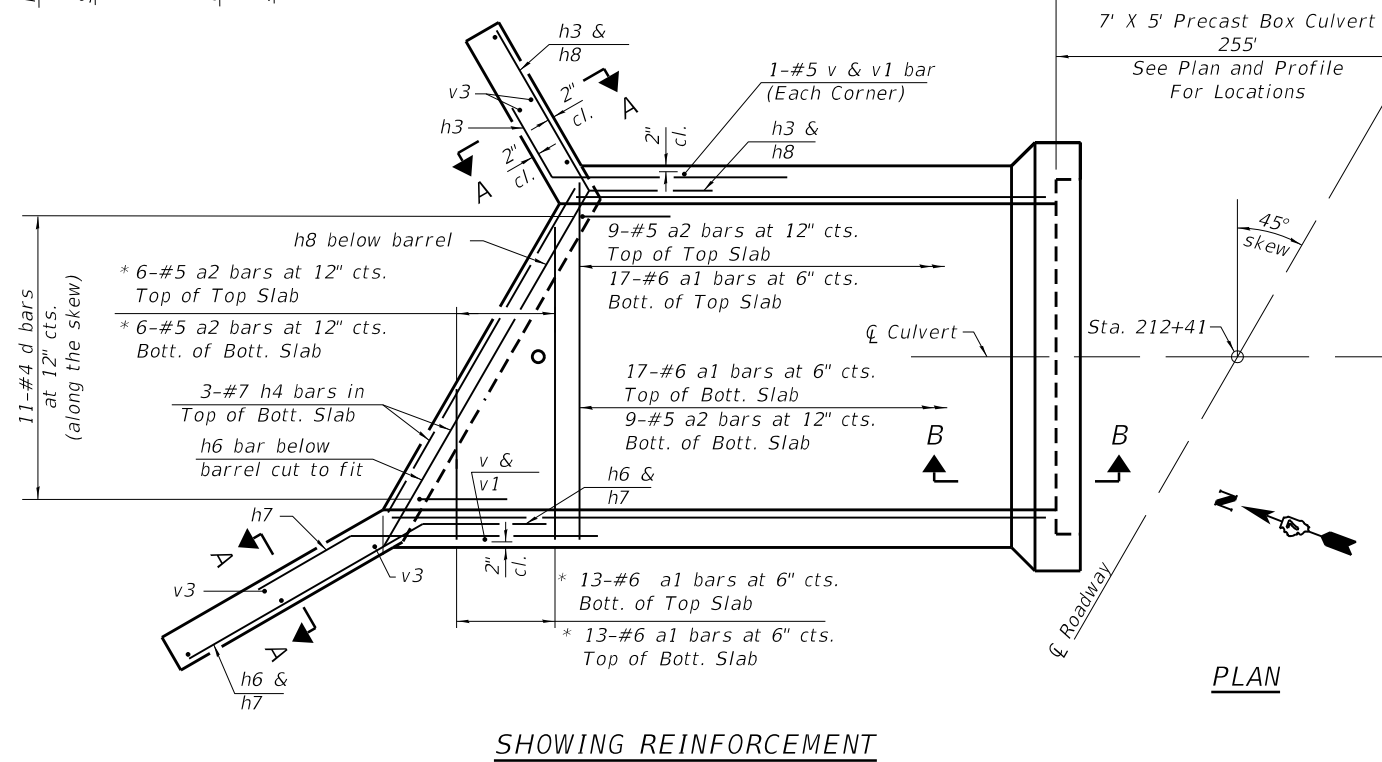
END SECTIONS

*** (27/15) indicates 27 bars on Long wall / 15 bars on Short wall



STR. NO. 058-8662
 STATION 212+41
 BUILT 2019 BY IDOT
 SECTION 13,14CR
 LOADING HL-93

NAME PLATE
 SEE STD. 515001-03



MODEL: Default
 FILE: \\nas01\p01\B&E\ID\ITC\Illinois\p01\B&E\ID\ITC\Documents\DOT\Office\ID\ITC\7381\058-8662\BoxCulvert\BoxCulvert.dgn

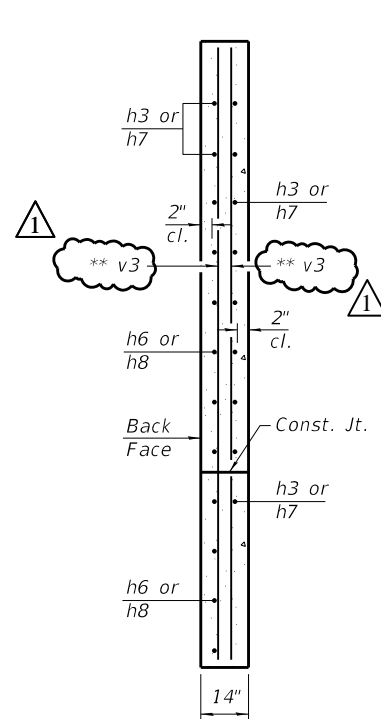
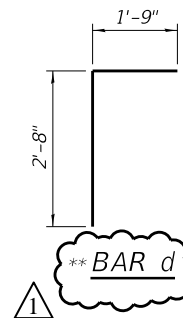
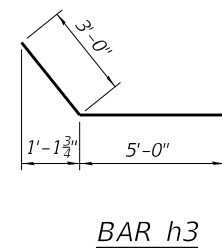
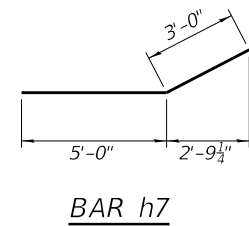
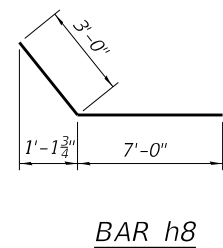
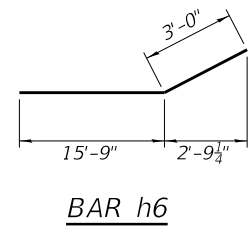
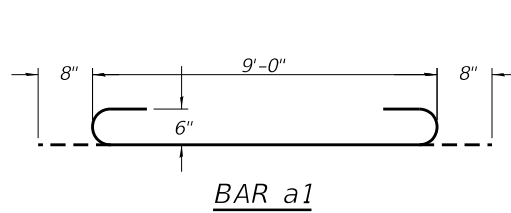
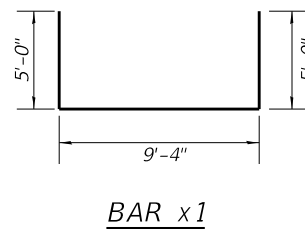
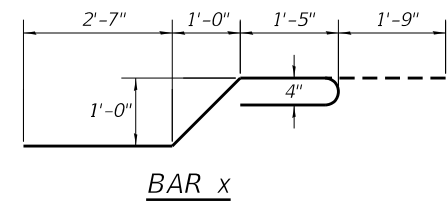
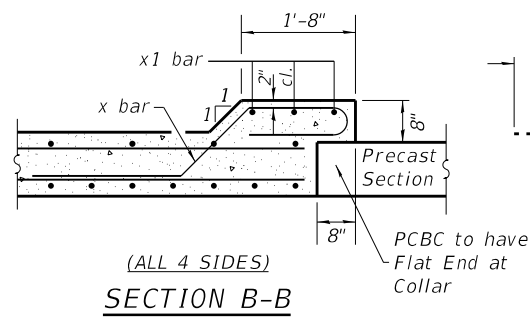
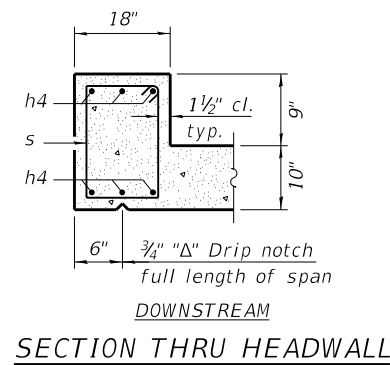
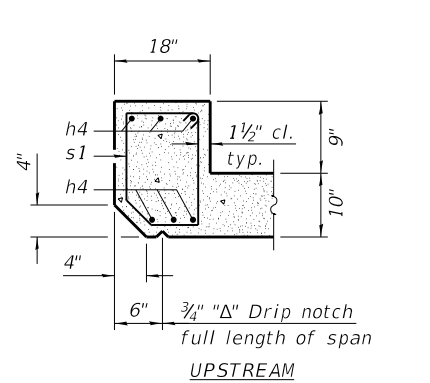
USER NAME = steffemk	DESIGNED -	REVISED -
	DRAWN -	REVISED -
PLOT SCALE = 100.0000' / in.	CHECKED -	REVISED -
PLOT DATE = 12/21/2018	DATE -	REVISED -

STATE OF ILLINOIS
 DEPARTMENT OF TRANSPORTATION

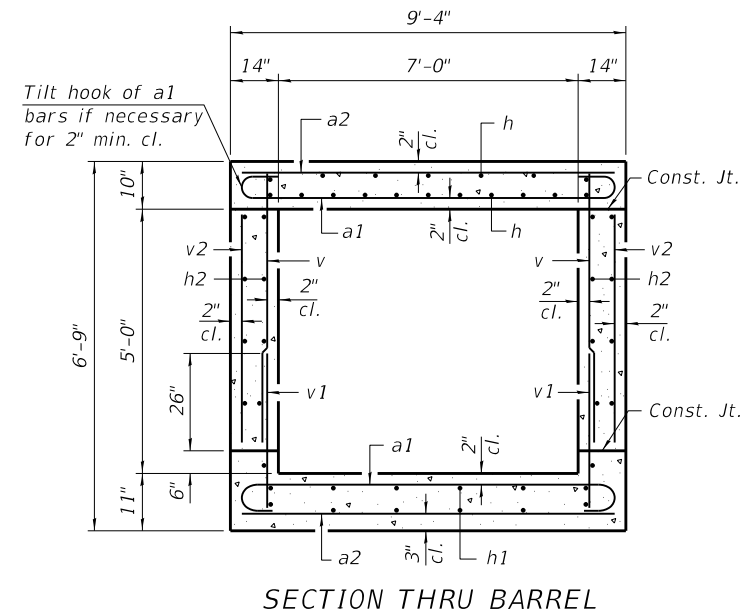
BOX CULVERT DETAIL SN. 058-8662	
STA 212+41	
SCALE:	SHEET OF SHEETS STA. TO STA.

F.A.U. RTE.	SECTION	COUNTY	TOTAL SHEETS	SHEET NO.
7381	13,14CR	MACON	16	11
CONTRACT NO. 74849				
ILLINOIS FED. AID PROJECT				

REVISOR SHEET 1-2-2019



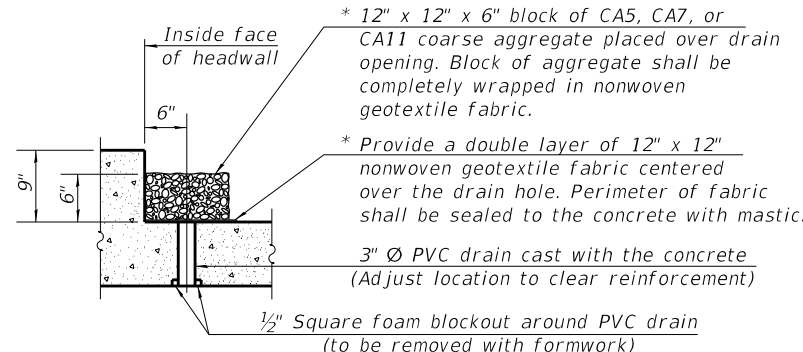
SECTION A-A
 ** v3 Bars and d Bars on the South End Section will be cut to fit in the field to the required length



BILL OF MATERIAL
 (Total for two End Sections)

Bar	No.	Size	Length	Shape
a1	94	#6	10'-4"	U
a2	48	#5	9'-0"	—
d	22	#4	4'-5"	L
h	16	#5	22'-4"	—
h1	16	#5	22'-4"	—
h2	22	#4	22'-4"	—
h3	28	#7	8'-0"	—
h4	18	#7	11'-6"	—
h6	28	#7	18'-9"	—
h7	28	#7	8'-0"	—
h8	28	#7	10'-0"	—
s	11	#4	5'-11"	□
s1	11	#4	5'-11"	□
v	88	#5	5'-2"	—
v1	88	#5	3'-4"	—
v2	50	#4	4'-8"	—
v3	16	#4	9'-3"	—
x	72	#4	7'-2"	—
x1	12	#4	19'-4"	—
North End Section			Cu. Yd.	22.7
South End Section			Cu. Yd.	21.3
Reinforcement Bars			Pound	7691.2

* Nonwoven geotextile fabric shall conform to the requirements of Article 1080.01 of the Standard Specifications. The minimum weight of the fabric shall be 6 ounces per square yard.



3" Ø DRAIN DETAIL

(All costs associated with furnishing and constructing the above drain detail will not be measured for payment but shall be included in the contract unit price for the associated work.)

Quantities of Concrete and Rebar are approximate and are included in the cost of the End Sections.

PRECAST BOX CULVERT

Design Fill Heights
 3.0 ft. Min
 11.0 ft. Max
 Per ASTM C-1577

REV. 1-2-2019

Notes:
 A distance of half the length of the wingwall but not less than six feet of the barrel shall be poured monolithically with the wingwalls.
 Bars indicated thus 12 x 4-#5 etc. indicates 12 lines of bars with 4 lengths per line.
 At the Contractor's option, a longer v1 bar may be ordered to replace the v bar.
 No reduction in quantities shall be made for this substitution.
 All construction joints shall be bonded.

STATE OF ILLINOIS
 DEPARTMENT OF TRANSPORTATION

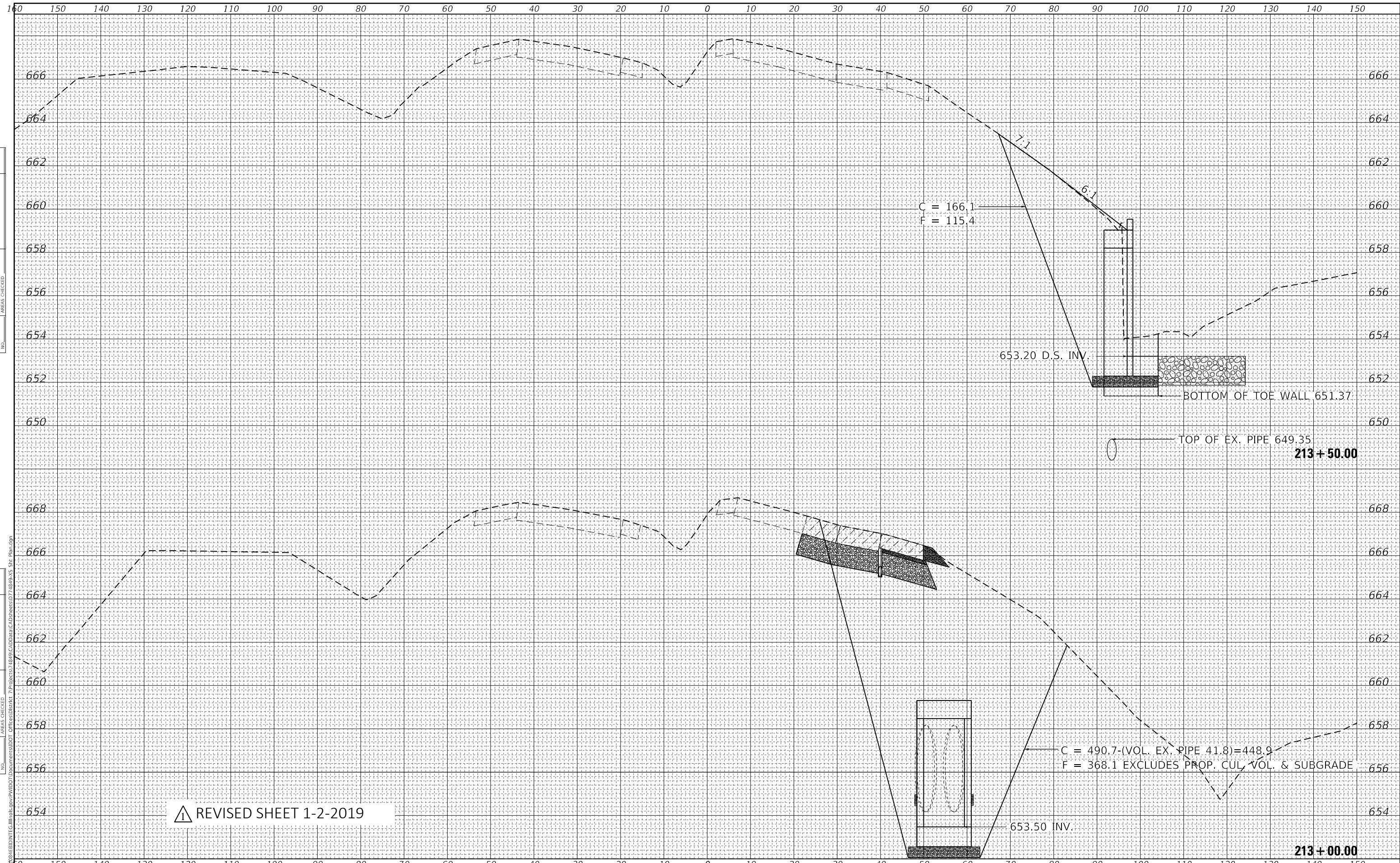
BOX CULVERT DETAIL SN. 058-8662
 STA 212+41

F.A.U. RTE.	SECTION	COUNTY	TOTAL SHEETS	SHEET NO.
7381	13.14CR	MACON	16	12
CONTRACT NO. 74849			ILLINOIS FED. AID PROJECT	

USER NAME = Pricckw	DESIGNED -	REVISED - KWP 11-1-18
PLOT SCALE = 100.2297' / in.	DRAWN -	REVISED -
PLOT DATE = 12/4/2018	CHECKED -	REVISED -
	DATE -	REVISED -

SCALE: SHEET OF SHEETS STA. TO STA.

MODEL Default
 FILE NAME: p:\11084810\BID\NTE\Illinois\pwr\WID\DOT\Documents\DOT_Offices\Bartlett\Project\174848\CADD\DATA\CAD\Drawings\74848-11-End Sect details.dgn



DATE	
BY	
FINAL SURVEY NO.	
SURVEYED	
PLOTTED	
TEMPLATE	
AREAS CHECKED	

DATE	
BY	
ORIGINAL SURVEY NO.	
SURVEYED	
PLOTTED	
TEMPLATE	
AREAS CHECKED	

1 REVISIED SHEET 1-2-2019

MODEL: Defaul	USER NAME = stefenmk	DESIGNED -	REVISIED -	STATE OF ILLINOIS DEPARTMENT OF TRANSPORTATION	CROSS SECTION			F.A. RTE.	SECTION	COUNTY	TOTAL SHEETS	SHEET NO.	
FILE NAME: pwp100	PLOT SCALE = 20.0000' / in.	DRAWN -	REVISIED -		SCALE:	SHEET	OF	SHEETS	7381	13.14 CR	MACON	16	15
	PLOT DATE = 12/21/2018	CHECKED -	REVISIED -		STA. 213+00.00	TO	STA. 213+50.00	CONTRACT NO. 74849		ILLINOIS FED. AID PROJECT			
		DATE -	REVISIED -										