

136

01-18-2019 LETTING ITEM 136

STATE OF ILLINOIS
DEPARTMENT OF TRANSPORTATION

FAU RTE	SECTION	COUNTY	TOTAL SHEETS	SHEET NO
7381	13,14 CR	MACON	16	1

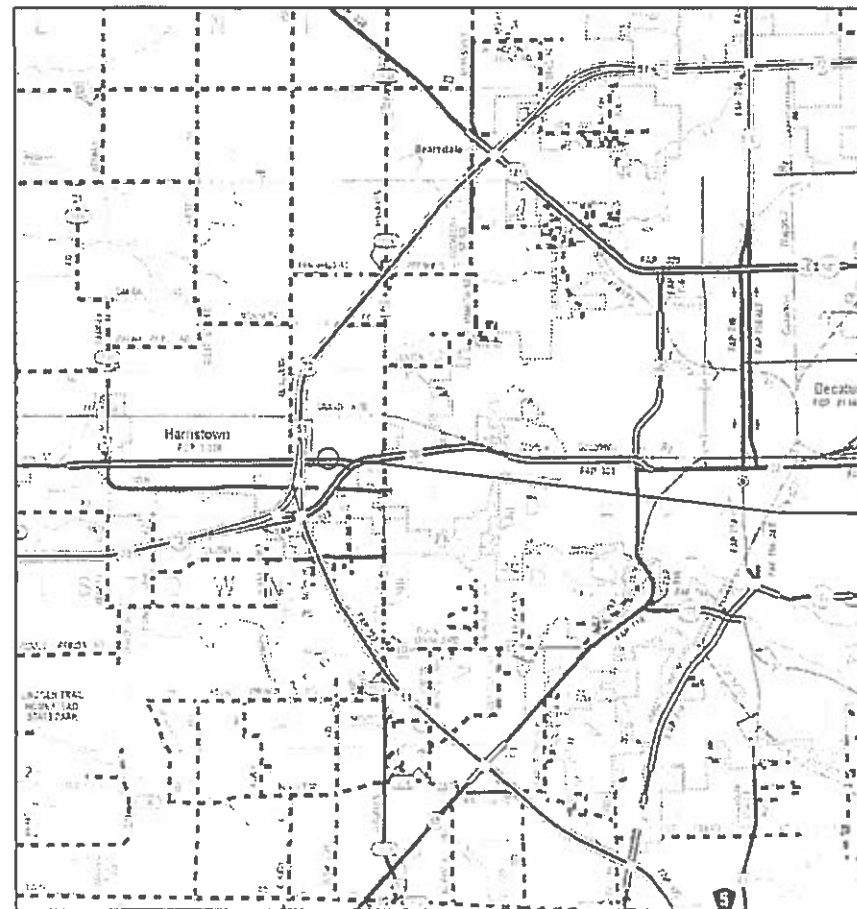
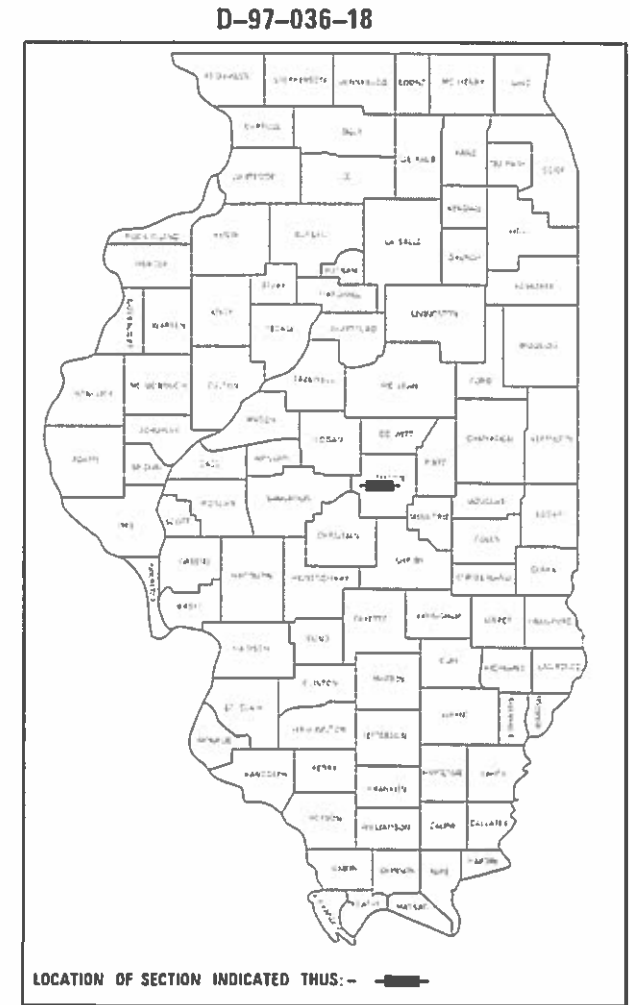
ILLINOIS CONTRACT NO. 74849

FOR INDEX OF SHEETS, SEE SHEET NO. 2

PROPOSED HIGHWAY PLANS

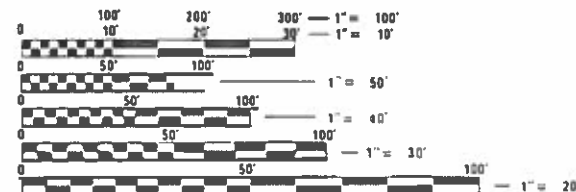
FAU ROUTE 7381 (OLD US 36)
SECTION 13,14CR
PROJECT STP-HBDZ(807)
CULVERT REPLACEMENT
MACON COUNTY

C-97-073-18



EXIST. SN 058-8802
PROP. SN 058-8662

ADT: 3400 (2017)
PERCENT OF TRUCKS 6.5



FULL SIZE PLANS HAVE BEEN PREPARED USING STANDARD ENGINEERING SCALES. REDUCED SIZED PLANS WILL NOT CONFORM TO STANDARD SCALES. IN MAKING MEASUREMENTS ON REDUCED PLANS, THE ABOVE SCALES MAY BE USED.

J.U.L.I.E.
JOINT UTILITY LOCATION INFORMATION FOR EXCAVATION
1-800-892-0123
OR 811

PROJECT ENGINEER DEBRA BARRETT
PROJECT MANAGER LEAH HILLE

CONTRACT NO. 74849



GROSS LENGTH = 70.0 FT. = 0.013 MILE
NET LENGTH = 70.0 FT. = 0.013 MILE

STATE OF ILLINOIS
DEPARTMENT OF TRANSPORTATION

SUBMITTED October 18 20 18
Jeffrey M South
REGIONAL ENGINEER

Dec 7 20 18
Paul P. Chafin
ENGINEER OF DESIGN AND ENVIRONMENT

Dec 7 20 18
Paul P. Chafin
DIRECTOR OF HIGHWAYS PROJECT IMPLEMENTATION

PRINTED BY THE AUTHORITY
OF THE STATE OF ILLINOIS

INDEX OF SHEETS

SHEET NO.	ITEM
1	COVER SHEET
2	INDEX OF SHEETS, LIST OF APPLICABLE HIGHWAY STANDARDS
3-4	SUMMARY OF QUANTITIES
5	TYPICAL SECTION
6	EXCAVATION DETAIL
7	SCHEDULES FOR STRUCTURE
8	PLAN SHEET SN 058-8662
9	PROFILE SHEET SN 058-8662
10	EROSION CONTROL DETAILS
11-12	BOX CULVERT PLANS SN 058-8662
13-16	CROSS SECTION SHEETS SN 058-8662

THE FOLLOWING STANDARDS AND DISTRICT DETAILS ARE A PART OF THESE PLANS AND ARE INCLUDED AFTER SHEET NO. 15 :

STD. NO.	DESCRIPTION
000001-07	STANDARD SYMBOLS, ABBREVIATIONS AND PATTERNS
001001-02	AREAS OF REINFORCEMENT BARS
001006	DECIMAL OF AN INCH AND OF A FOOT
280001-07	TEMPORARY EROSION CONTROL SYSTEMS
420001-09	PAVEMENT JOINTS
420101-06	JOINTED PCC PAVEMENT
420701-03	PAVEMENT WELDED WIRE REINFORCEMENT
483001-05	PCC SHOULDER
515001-03	NAME PLATE FOR BRIDGES
601001-05	PIPE UNDERDRAINS
701101-05	OFF-ROAD OPERATIONS, MULTILANE, 15' (4.5M) TO 24' (600MM) FROM EDGE PAVEMENT
701106-02	OFF-ROAD OPERATIONS, MULTILANE, MORE THAN 15' (4.5M) AWAY
701421-08	LANE CLOSURE, MULTILANE, DAY OPERATIONS ONLY, FOR SPEEDS > 45 MPH TO 55 MPH
701426-09	LANE CLOSURE, MULTILANE, INTERMITTENT OR MOVING OPERATIONS, FOR SPEEDS >45 MPH
701701-10	URBAN LANE CLOSURE, MULTILANE INTERSECTION
701901-08	TRAFFIC CONTROL DEVICES
780001-05	TYPICAL PAVEMENT MARKINGS
B. L. R. 21-9	TYPICAL APPLICATIONS OF TRAFFIC CONTROL DEVICES FOR CONSTRUCTION ON RURAL LOCAL HIGHWAYS

COMMITMENT:

THE CONTRACTOR SHALL ABIDE BY THE BUCKEYE PARTNERS "RIGHT-OF-WAY USE RESTRICTIONS SPECIFICATION, REVISION 5" WHEN WORKING IN THE VICINITY OF THE EXISTING PIPELINE TO REMAIN UNDISTURBED. A COPY OF THIS SPECIFICATION HAS BEEN PROVIDED IN THE SPECIAL PROVISIONS FOR REFERENCE. ACCEPTANCE OF BUCKEYE PARTNERS' RESTRICTIONS SHALL BE EXECUTED BY THE CONTRACTOR PRIOR TO COMMENCEMENT OF CONSTRUCTION.

MODEL: Default
FILE NAME: P:\1108\B&E\BIDD\ITEC\Illinois\gov\PIV\DOT\Documents\13\DOT_Offices\District 7\Projects\171849\CADD\data\CAD\sheet\13\71849-PIV-000000.dgn

USER NAME = steffenmk	DESIGNED -	REVISED -
	DRAWN -	REVISED -
PLOT SCALE = 100.0000 ' / in.	CHECKED -	REVISED -
PLOT DATE = 10/19/2018	DATE -	REVISED -

**STATE OF ILLINOIS
DEPARTMENT OF TRANSPORTATION**

**INDEX OF SHEETS
HIGHWAY STANDARDS**

SCALE: SHEET OF SHEETS STA. TO STA.

F.A.U. RTE.	SECTION	COUNTY	TOTAL SHEETS	SHEET NO.
7381	13,14 CR	MACON	16	2
CONTRACT NO. 74849				
ILLINOIS FED. AID PROJECT				

URBAN
80% FED
20% STATE

URBAN
80% FED
20% STATE

SUMMARY OF QUANTITIES			TOTAL QUANTITIES	CONSTRUCTION TYPE CODE		
CODE NO	ITEM	UNIT		0004		
20100110	TREE REMOVAL (6 TO 15 UNITS DIAMETER)	UNIT	50	50		
20200100	EARTH EXCAVATION	CU YD	3386	3386		
20201200	REMOVAL AND DISPOSAL OF UNSUITABLE MATERIAL	CU YD	10	10		
28000305	TEMPORARY DITCH CHECKS	FOOT	36	36		
28000400	PERIMETER EROSION BARRIER	FOOT	447	447		
28100107	STONE RIPRAP, CLASS A4	SQ YD	214	214		
28200200	FILTER FABRIC	SQ YD	214	214		
30300112	AGGREGATE SUBGRADE IMPROVEMENT 12"	SQ YD	664	664		
31101900	SUBBASE GRANULAR MATERIAL, TYPE C	TON	26	26		
42000501	PORTLAND CEMENT CONCRETE PAVEMENT 10" (JOINTED)	SQ YD	427	427		
44000100	PAVEMENT REMOVAL	SQ YD	427	427		
44004250	PAVED SHOULDER REMOVAL	SQ YD	222	222		
44200050	WELDED WIRE REINFORCEMENT	SQ YD	427	427		

SUMMARY OF QUANTITIES			TOTAL QUANTITIES	CONSTRUCTION TYPE CODE		
CODE NO	ITEM	UNIT		0004		
48101600	AGGREGATE SHOULDERS, TYPE B 8"	SQ YD	62	62		
48300300	PORTLAND CEMENT CONCRETE SHOULDERS 8"	SQ YD	222	222		
50104400	CONCRETE HEADWALL REMOVAL	EACH	2	2		
51500100	NAME PLATES	EACH	1	1		
54001001	BOX CULVERT END SECTIONS, CULVERT NO. 1	EACH	2	2		
54010705	PRECAST CONCRETE BOX CULVERTS 7' X 5'	FOOT	255	255		
60108200	PIPE UNDERDRAINS 6" (SPECIAL)	FOOT	281	281		
67000500	ENGINEER'S FIELD OFFICE, TYPE B	CAL MO	4	4		
67100100	MOBILIZATION	L SUM	1	1		
70100310	TRAFFIC CONTROL AND PROTECTION, STANDARD 701421	L SUM	1	1		
70101830	TRAFFIC CONTROL AND PROTECTION, STANDARD BLR 21	L SUM	1	1		
70102635	TRAFFIC CONTROL AND PROTECTION, STANDARD 701701	L SUM	1	1		

MODEL: Default
 FILE NAME: P:\A\ULB\B\BID\BID\TEC\Illinois\poc\p\WIDOT\Documents\DOT Office\BID\BID\774849\p\500500.dgn

REV. - MS

USER NAME = steffenmk	DESIGNED -	REVISED -
	DRAWN -	REVISED -
PLOT SCALE = 100.0000 ' / in.	CHECKED -	REVISED -
PLOT DATE = 10/19/2018	DATE -	REVISED -

**STATE OF ILLINOIS
DEPARTMENT OF TRANSPORTATION**

SUMMARY OF QUANTITIES

SCALE: SHEET OF SHEETS STA. TO STA.

F.A.U. RTE.	SECTION	COUNTY	TOTAL SHEETS	SHEET NO.
7381	13,14 CR	MACON	16	3
CONTRACT NO. 74849				
ILLINOIS FED. AID PROJECT				

URBAN
80% FED
20% STATE

SUMMARY OF QUANTITIES			TOTAL QUANTITIES	CONSTRUCTION TYPE CODE		
CODE NO	ITEM	UNIT		0004		
* 78001110	PAINT PAVEMENT MARKING - LINE 4"	FOOT	317	317		
X2501000	SEEDING, CLASS 2 (SPECIAL)	ACRE	0.7	0.7		
X5015225	PIPE CULVERT REMOVAL (SPECIAL)	FOOT	556	556		
70107025	CHANGEABLE MESSAGE SIGN	CAL DA	28	28		
Z0023602	GRANULAR CULVERT BACKFILL	CU YD	2022	2022		
* Z0054505	ROCK FILL - REPLACEMENT	TON	20	20		

SUMMARY OF QUANTITIES			TOTAL QUANTITIES	CONSTRUCTION TYPE CODE		
CODE NO	ITEM	UNIT		0004		

MODEL: D:\pilot\101118\B&E\IDN\TEC_illinois.gov\PWD\DOT\Documents\DOT_Offices\District 7\Projects\174849\CADD\data\CAD\ sheets\174849-pl-500.dgn
FILE NAME: P:\1118\B&E\IDN\TEC_illinois.gov\PWD\DOT\Documents\DOT_Offices\District 7\Projects\174849\CADD\data\CAD\ sheets\174849-pl-500.dgn

* SPECIALTY ITEM

REV. - MS

USER NAME = steffemk	DESIGNED -	REVISED -
	DRAWN -	REVISED -
PLOT SCALE = 100.0000' / in.	CHECKED -	REVISED -
PLOT DATE = 10/19/2018	DATE -	REVISED -

**STATE OF ILLINOIS
DEPARTMENT OF TRANSPORTATION**

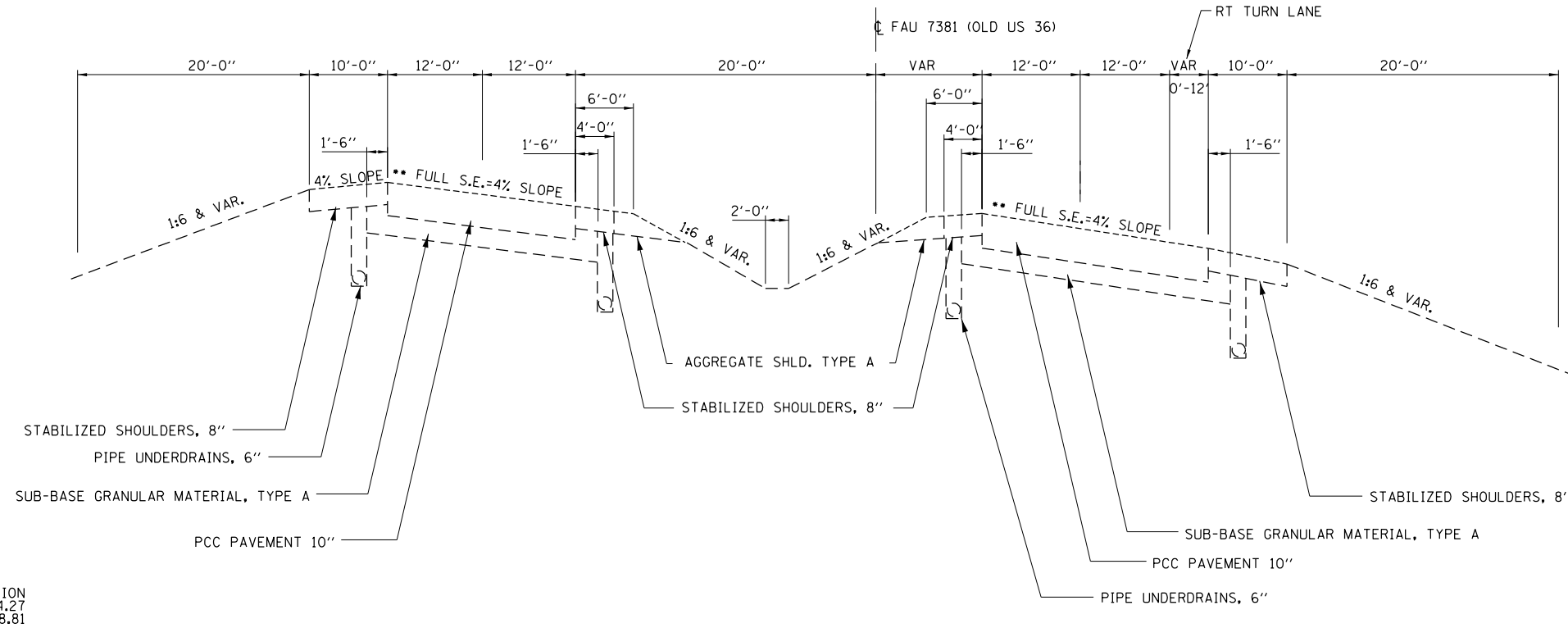
SUMMARY OF QUANTITIES

SCALE:	SHEET	OF	SHEETS	STA.	TO STA.
--------	-------	----	--------	------	---------

F.A.U. RTE.	SECTION	COUNTY	TOTAL SHEETS	SHEET NO.
7381	13.14 CR	MACON	16	4
CONTRACT NO. 74849				
ILLINOIS FED. AID PROJECT				

EXISTING TYPICAL SECTION FAU 7381 (OLD US 36)

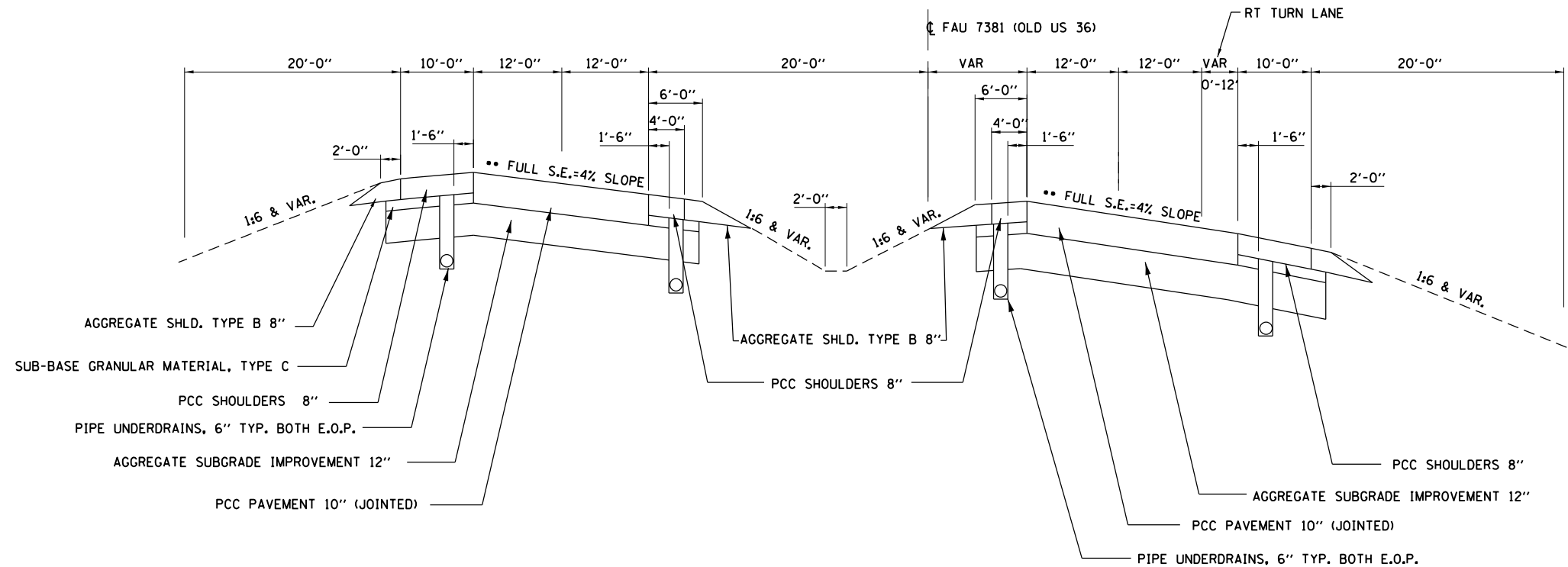
STATION 208+44.27 TO 217+66.26



** SUPERELEVATION TRANSITION
 ATTAINED STA 209+44.27 TO STA 209+94.27
 REMOVED STA 215+13.91 TO STA 216+38.81

PROPOSED TYPICAL SECTION FAU 7381 (OLD US 36)

STATION 211+57 TO 213+33



MODEL: Default
 FILE: \\nas0101\proj\74849\7381\7381.dgn
 PROJECT: 74849\7381\7381.dgn
 OFFICE: IDI
 USER: steffenmk
 DATE: 10/19/2018

USER NAME = steffenmk	DESIGNED -	REVISED -
DRAWN -	REVISOR -	REVISION -
PLOT SCALE = 100.0000' / in.	CHECKED -	REVISOR -
PLOT DATE = 10/19/2018	DATE -	REVISION -

STATE OF ILLINOIS
 DEPARTMENT OF TRANSPORTATION

TYPICAL SECTIONS

SCALE: SHEET OF SHEETS STA. TO STA.

F.A. RTE.	SECTION	COUNTY	TOTAL SHEETS	SHEET NO.
7381	13,14 CR	MACON	16	5
CONTRACT NO. 74849				
ILLINOIS FED. AID PROJECT				

SCHEDULES FOR SN 058-8662

PAVEMENT REMOVAL

STA ALONG CL LANE (STA TO STA)	LENGTH (FEET)	WIDTH (FEET) AVERAGE	AREA (SQ YD)
211+76 LT 212+43 LT		AREA TAKEN FROM CAD DRAWINGS	181.4
212+31 RT 213+05 RT		AREA TAKEN FROM CAD DRAWINGS	245.8
TOTAL:			427

AGGREGATE SUBGRADE IMPROVEMENT 12"

STA ALONG CL LANE (STA TO STA)	LENGTH (FEET)	WIDTH (FEET) AVERAGE	AREA (SQ YD)
211+76 LT 212+43 LT		AREA TAKEN FROM CAD DRAWINGS	297.8
212+31 RT 213+05 RT		AREA TAKEN FROM CAD DRAWINGS	365.9
TOTAL:			664

SUBBASE GRANULAR MATERIAL, TYPE C

STA ALONG CL LANE (STA TO STA)	DEPTH (FEET) 2" AVERAGE	WIDTH (FEET) AVERAGE	AREA (SQ YD)	TONS
211+62 LT 212+27 LT	0.16	10.5 FT	78.3	8.6
211+89 LT 212+57 LT	0.16	4.5 FT	37.3	4.1
212+12 RT 212+81 RT	0.16	4.5 FT	34.5	3.8
212+47 RT 213+27 RT	0.16	10.5 FT	84.9	9.3
TOTAL:			26	

- Areas taken from CAD drawing
- use 2.05 tons/cuyd

PCC PAVEMENT 10" (JOINTED)

STA ALONG CL LANE (STA TO STA)	LENGTH (FEET)	WIDTH (FEET) AVERAGE	AREA (SQ YD)
211+76 LT 212+43 LT		AREA TAKEN FROM CAD DRAWINGS	181.4
212+31 RT 213+05 RT		AREA TAKEN FROM CAD DRAWINGS	245.8
TOTAL:			427

EARTH EXCAVATION

LOCATION (STA TO STA)	EARTH EXCAVATION (CU YD)	FILL REQUIRED (CU YD)	EARTH EXCAVATION AVAILABLE (ADJUSTED FOR SHRINKAGE - 25%) (CU YD)	EARTHWORK BALANCE WASTE (+) OR SHORTAGE (-) (CU YD)
211+40 213+60	3278.0	1256	2459	+1203.0
RIPRAP AND DITCH	108.0		81.0	+81.0
TOTAL:	3386.0	1256.0	2540.0	+1284.0

GRANULAR CULVERT BACKFILL

LOCATION (STA TO STA)	LENGTH (FEET)	QUANTITY (CU YD)
211+56 213+35	*152	2022
TOTAL:		2022

*LENGTH ALONG CULVERT

NAME PLATES

LOCATION STATION	UNIT (EACH)
212+41.00	1
TOTAL:	1

PRECAST CONCRETE BOX CULVERT 7' X 5'

LOCATION STA	OFFSET (FOOT)	SIDE	UNIT (FOOT)
211+54.6	97.07	LT	120.83
213+53.8	97.92	RT	134.17
TOTAL:			255.0

CONCRETE HEADWALL REMOVAL

LOCATION STA	OFFSET (FOOT)	SIDE	UNIT (EACH)
211+55	98.45	LT	1
213+53	95.98	RT	1
TOTAL:			2

PIPE CULVERT REMOVAL (SPECIAL)

LOCATION STA	OFFSET (FOOT)	SIDE	LENGTH (FOOT)
211+55	98.45	LT	134
213+53	95.98	RT	144
DOUBLE PIPE			X2
TOTAL:			556

AGGREGATE SHOULDERS, TYPE B 8"

STA ALONG CL LANE (STA TO STA)	LENGTH (FEET)	WIDTH (FEET) AVERAGE	AREA (SQ YD) INSIDE SLD.	AREA (SQ YD) OUTSIDE SLD.
211+89 LT 212+57 LT		AREA TAKEN FROM CAD DRAWINGS	15.5	14.8
212+12 RT 212+81 RT		AREA TAKEN FROM CAD DRAWINGS	15.0	16.8
TOTAL:			62.0	

BOX CULVERT END SECTIONS, CULVERT NO. 1

LOCATION STA	OFFSET (FOOT)	SIDE	UNIT (EACH)
211+54.6	97.07	LT	1
213+53.8	97.92	RT	1
TOTAL:			2

PAINT PAVEMENT MARKING - LINE 4"

LOCATION ALONG LANE CENTERLINE (STA TO STA)	LENGTH FEET	CENTER SKIP		EDGELINE		QUANTITY FEET
		WHITE FEET	WHITE FEET	YELLOW FEET	YELLOW FEET	
211+76 212+43	67	16.8	67	67	67	150.8
212+31 213+05	74	18.5	68	80	80	166.5
TOTAL:						317.3

FILTER FABRIC

LOCATION (STA TO STA)	SIDE	QUANTITY (SQ YD)
211+35 211+66	LT	67.0
213+36 214+03	RT	147.0
TOTAL:		214

PERIMETER EROSION BARRIER

LOCATION STA	OFFSET (FOOT)	LOCATION STA	OFFSET (FOOT)	SIDE	QUANTITY (FOOT)	
212+15	73	212+63	111	RT	58	
212+63	111	213+55	105	RT	83	
213+69	103	213+85	102	RT	15	
213+85	102	214+32	126	RT	49	
214+32	126	214+23	82	RT	45	
214+23	82	213+89	65	RT	37	
TOTAL:						447

PIPE UNDERDRAINS, 6" (SPECIAL)

LOCATION STA	OFFSET (FOOT)	SIDE	LENGTH (FOOT)
211+66	43.4	LT	68
211+87	19.5	LT	69
212+14	10.0	RT	68
212+38	37.9	RT	76
TOTAL:			281

TEMPORARY DITCH CHECKS

LOCATION STA	OFFSET (FOOT)	SIDE	QUANTITY (FOOT)
211+28	4	LT	6
212+03	98	LT	12
213+27	6	LT	6
214+08	149	RT	6
214+26	135	RT	6
TOTAL:			36

STONE RIPRAP, CLASS A4

LOCATION (STA TO STA)	SIDE	LENGTH (FEET)	WIDTH (FEET)	QUANTITY (SQ YD)
211+35 211+66	LT	40	15	67.0
213+36 214+03	RT	67	19.8	147.0
TOTAL:				214.0

PAVED SHOULDER REMOVAL

STA ALONG CL LANE (STA TO STA)	LENGTH (FEET)	WIDTH (FEET) AVERAGE	AREA (SQ YD)
211+62 LT 212+27 LT	*	10 FT	74.8
211+89 LT 212+57 LT	*	4 FT	33.6
212+12 RT 212+81 RT	*	4 FT	31.2
212+47 RT 213+27 RT	*	10 FT	82.2
TOTAL:			222

* Areas taken from CAD drawing

PORTLAND CEMENT CONCRETE SHOULDERS 8"

STA ALONG CL LANE (STA TO STA)	LENGTH (FEET)	WIDTH (FEET) AVERAGE	AREA (SQ YD)
211+62 LT 212+27 LT	*	10 FT	74.8
211+89 LT 212+57 LT	*	4 FT	33.6
212+12 RT 212+81 RT	*	4 FT	31.2
212+47 RT 213+27 RT	*	10 FT	82.2
TOTAL:			222

* Areas taken from CAD drawing

SEEDING, CLASS 2 (SPECIAL)

LOCATION (STA TO STA)	AREA (SQ FT)	QUANTITY (ACRES)
211+00 214+00	*28663	0.7
TOTAL:		0.7

*AREA TAKEN FROM CAD

TREE REMOVAL (6 TO 15 UNITS DIAMETER)

LOCATION STA	OFFSET (FOOT)	SIDE	QUANTITY (UNITS)
*211+33	102	LT	6
*211+33	102	LT	10
*211+33	102	LT	10
*211+33	102	LT	12
*211+33	102	LT	12
TOTAL:			50

* One single tree at base with forked branches

MODEL: Default
FILE: \\nas101\proj\058-8662\Drawings\DOT\Office\Drawings\058-8662-PC-Schedule.dgn

USER NAME = steffenmk	DESIGNED -	REVISED -
	DRAWN -	REVISED -
PLOT SCALE = 100.0000' / in.	CHECKED -	REVISED -
PLOT DATE = 10/19/2018	DATE -	REVISED -

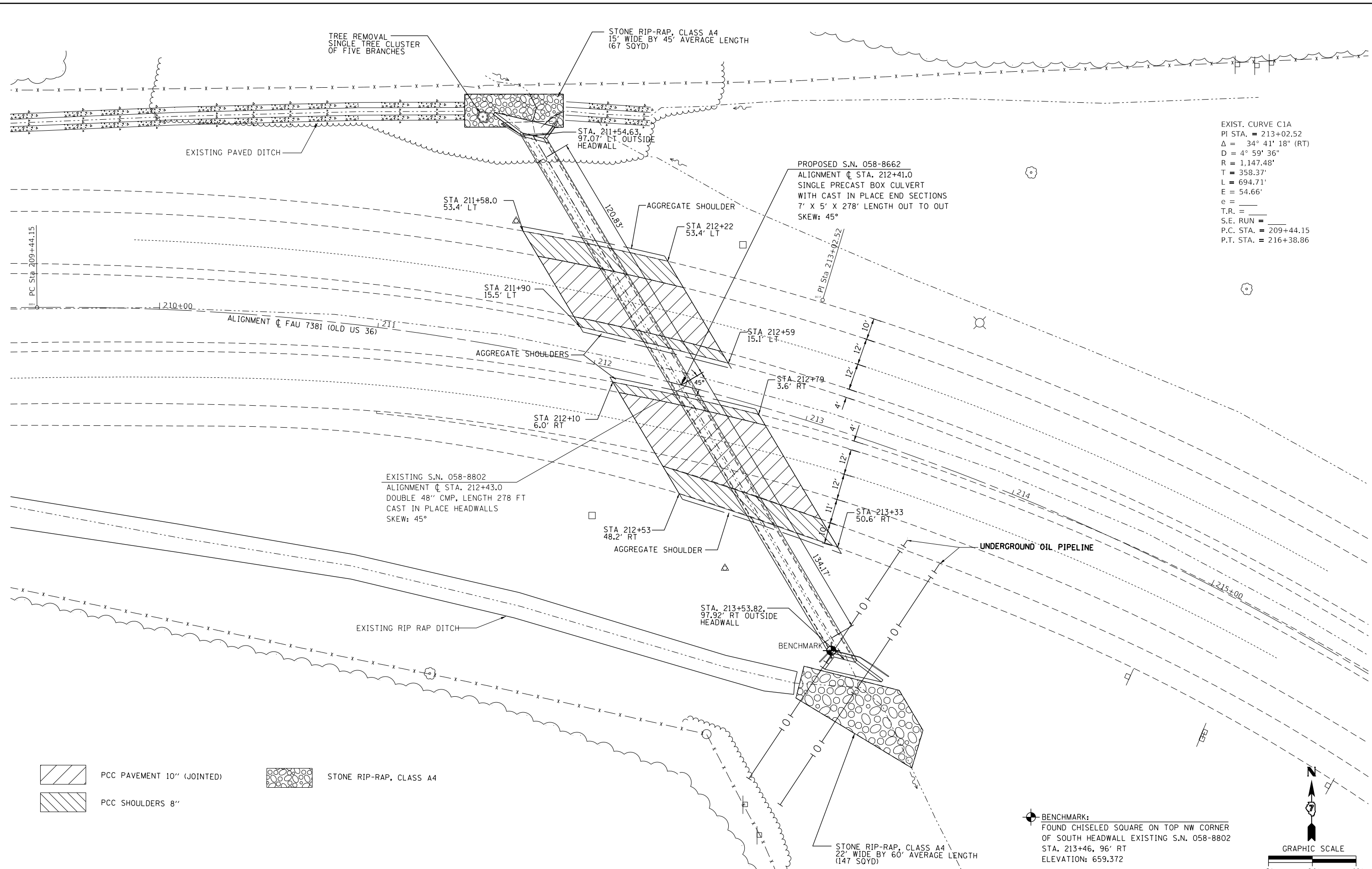
**STATE OF ILLINOIS
DEPARTMENT OF TRANSPORTATION**

QUANTITY SCHEDULES

SCALE: SHEET OF SHEETS STA. TO STA.

F.A.U RTE.	SECTION	COUNTY	TOTAL SHEETS	SHEET NO.
7381	13,14 CR	MACON	16	7
CONTRACT NO. 74849				

ILLINOIS FED. AID PROJECT

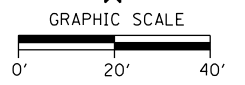


EXIST. CURVE C1A
 PI STA. = 213+02.52
 $\Delta = 34^\circ 41' 18''$ (RT)
 $D = 4^\circ 59' 36''$
 $R = 1,147.48'$
 $T = 358.37'$
 $L = 694.71'$
 $E = 54.66'$
 $e =$
 $T.R. =$
 $S.E. RUN =$
 $P.C. STA. = 209+44.15$
 $P.T. STA. = 216+38.86$

EXISTING S.N. 058-8802
 ALIGNMENT @ STA. 212+43.0
 DOUBLE 48" CMP, LENGTH 278 FT
 CAST IN PLACE HEADWALLS
 SKEW: 45°

BENCHMARK:
 FOUND CHISELED SQUARE ON TOP NW CORNER
 OF SOUTH HEADWALL EXISTING S.N. 058-8802
 STA. 213+46, 96' RT
 ELEVATION: 659.372

 PCC PAVEMENT 10" (JOINTED)
 PCC SHOULDERS 8"
 STONE RIP-RAP, CLASS A4



MODEL: Default
 FILE: \\nas01.cpe.stateil.us\B8E8ED1D\TEC\Illinois\poc\p\WIDOT\Documents\DOT Office\IDirect 7\Projects\171849\CADD\DATA\CAD\sheet\074849-plc.dwg

USER NAME = steffemk	DESIGNED -	REVISED -
	DRAWN -	REVISED -
PLOT SCALE = 40,0000 ' / in.	CHECKED -	REVISED -
PLOT DATE = 10/19/2018	DATE -	REVISED -

**STATE OF ILLINOIS
 DEPARTMENT OF TRANSPORTATION**

**PLAN SHEET
 S.N. 058-8662**

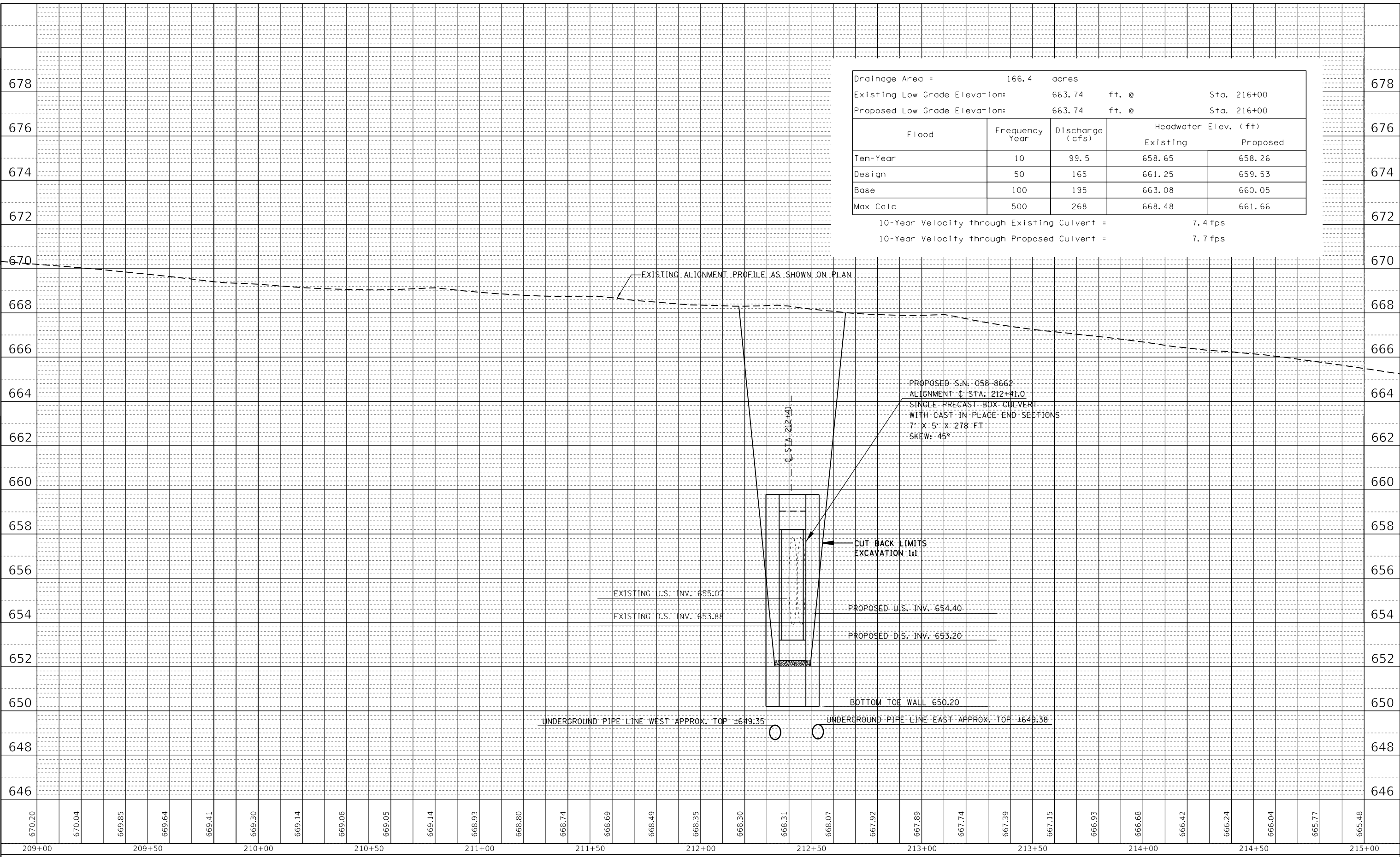
SCALE: 1"=20' SHEET OF SHEETS STA. TO STA.

F.A.U. RTE.	SECTION	COUNTY	TOTAL SHEETS	SHEET NO.
7381	13,14CR	Macon	16	8
CONTRACT NO. 74849				
ILLINOIS FED. AID PROJECT				

PLAN	SURVEYED	DATE
	PLOTTED	BY
	ALIGNMENT CHECKED	
	NOTE BOOK	
	NO.	
	CADD FILE NAME	

PROFILE	SURVEYED	DATE
	PLOTTED	BY
	GRADES CHECKED	
	NOTE BOOK	
	NO.	
	STRUCTURE NOTATION	
	STRUCTURE	

MODEL: Default
FILE NAME: p:\11\08\BID\ITE\Illinois\pwr\WID\07\Documents\DOT Office\Sheet\7\Projects\74849\CaddData\Cadd\Sheets\D774849-spcr.dgn



Drainage Area =	166.4	acres		
Existing Low Grade Elevation:	663.74	ft. @	Sta. 216+00	
Proposed Low Grade Elevation:	663.74	ft. @	Sta. 216+00	
Flood	Frequency Year	Discharge (cfs)	Headwater Elev. (ft)	
			Existing	Proposed
Ten-Year	10	99.5	658.65	658.26
Design	50	165	661.25	659.53
Base	100	195	663.08	660.05
Max Calc	500	268	668.48	661.66

10-Year Velocity through Existing Culvert = 7.4 fps
10-Year Velocity through Proposed Culvert = 7.7 fps

**STATE OF ILLINOIS
DEPARTMENT OF TRANSPORTATION**

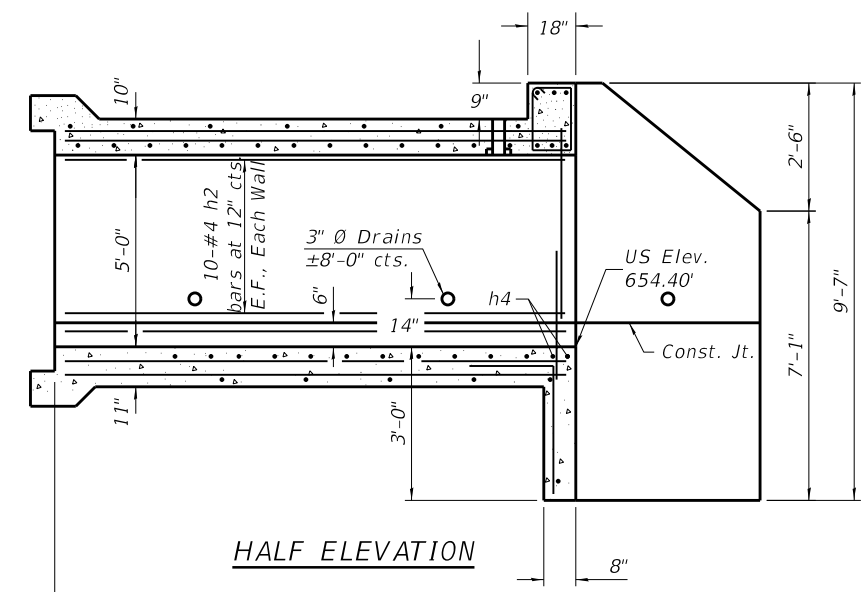
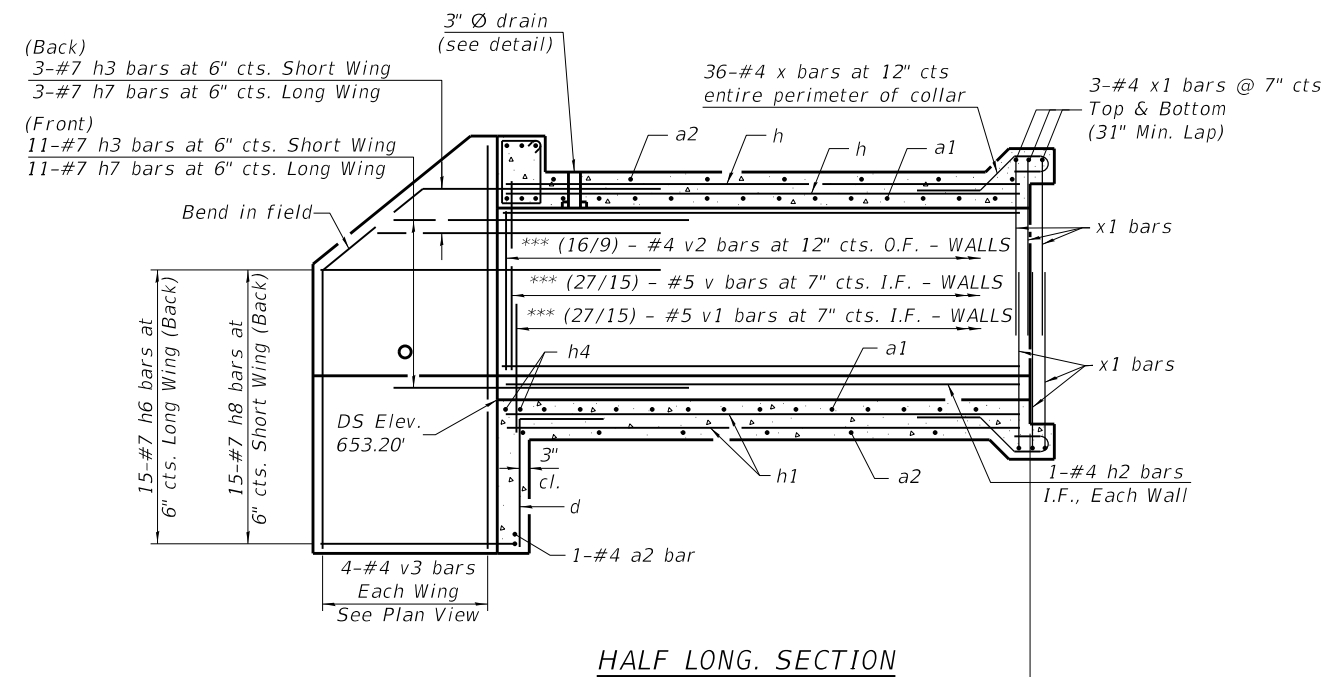
**PROFILE SHEET
S.N. 058-8662**

USER NAME = steffenk	DESIGNED -	REVISED -
PLOT SCALE = 40,0000' / in.	DRAWN -	REVISED -
PLOT DATE = 10/19/2018	CHECKED -	REVISED -
	DATE -	REVISED -

SCALE: SHEET OF SHEETS STA. TO STA.

F.A.U. RTE.	SECTION	COUNTY	TOTAL SHEETS	SHEET NO.
7381	13,14CR	MACON	16	9
CONTRACT NO. 74849				
ILLINOIS FED. AID PROJECT				

*** (27/15) indicates 27 bars on Long wall / 15 bars on Short wall

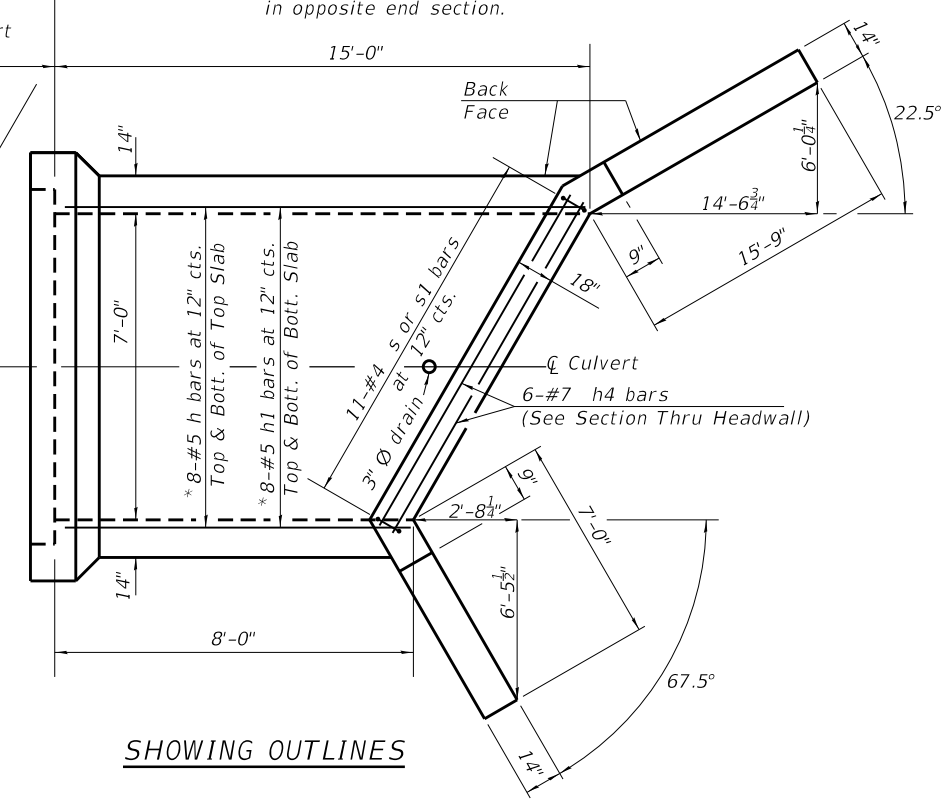
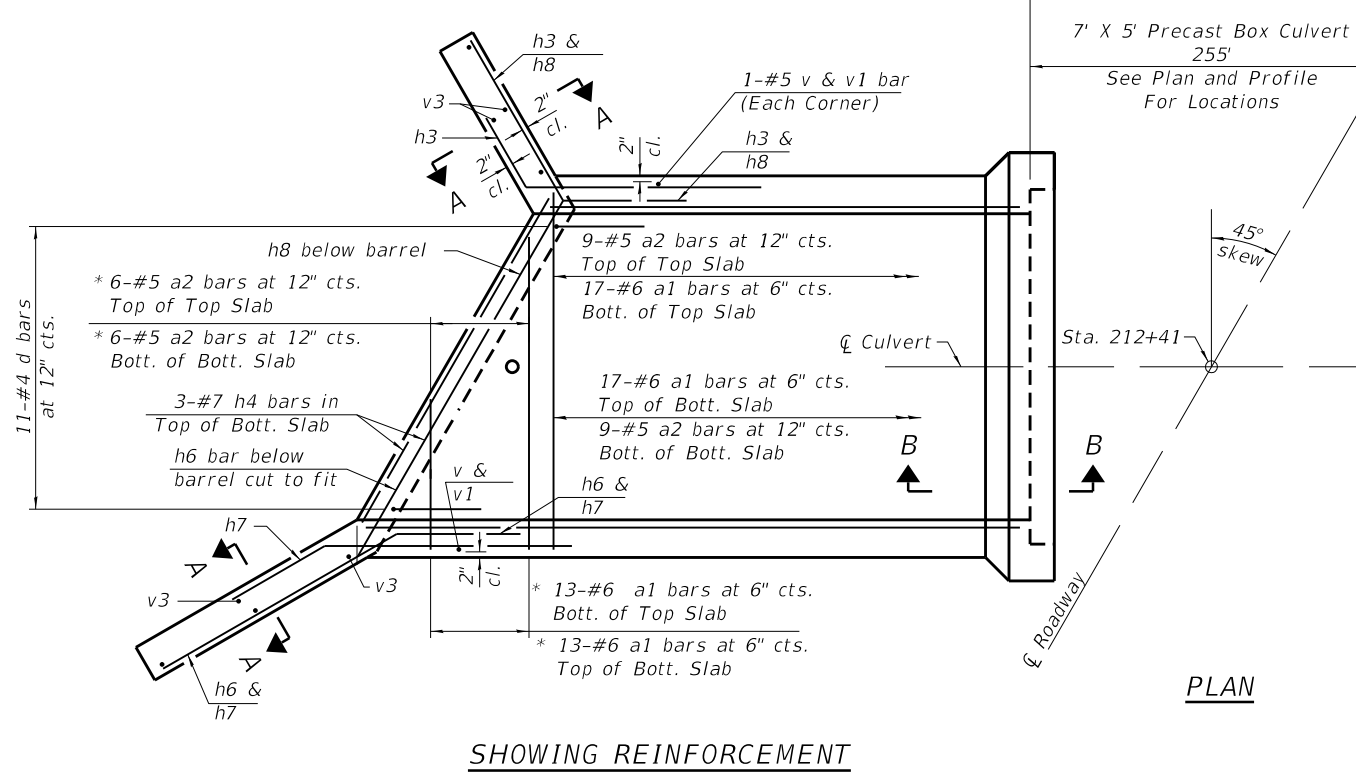


STR. NO. 058-8662
 STATION 212+41
 BUILT 2019 BY IDOT
 SECTION 13,14CR
 LOADING HL-93

NAME PLATE
 SEE STD. 515001-03

HALF ELEVATION

* "a" bars & "h" bars in skew portion of slabs shall be ordered full length & cut to fit. Balance of bar to be used in opposite end section.



PLAN

SHOWING OUTLINES

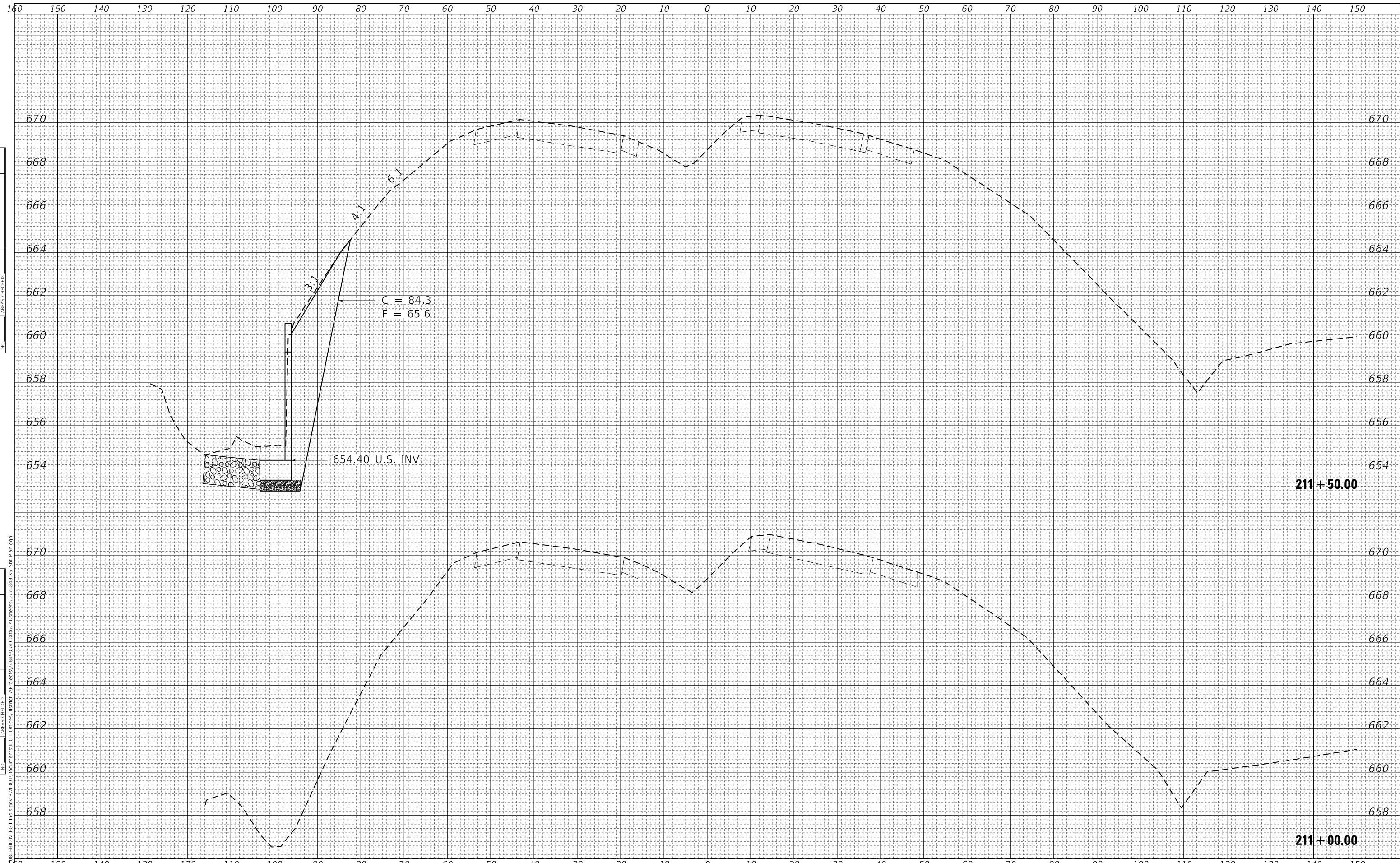
MODEL: D:\default
 FILE: 058-8662-1314CR-1314CR-CAD\BROUEN\DOT\Documents\1314CR-1314CR-CAD\BROUEN-Pho-End_Sect.dwg
 PROJECT: 1314CR-1314CR-CAD\BROUEN-Pho-End_Sect.dwg
 DATE: 10/19/2018
 TIME: 1:56:56 PM

USER NAME = stefenmk	DESIGNED -	REVISIONS -
	DRAWN -	REVISIONS -
PLOT SCALE = 100.0000' / in.	CHECKED -	REVISIONS -
PLOT DATE = 10/19/2018	DATE -	REVISIONS -

**STATE OF ILLINOIS
 DEPARTMENT OF TRANSPORTATION**

BOX CULVERT DETAIL SN. 058-8662			
STA 212 + 41			
SCALE:	SHEET	OF	SHEETS
	STA.	TO	STA.

F.A.U. RTE.	SECTION	COUNTY	TOTAL SHEETS	SHEET NO.
7381	13,14CR	MACON	16	11
CONTRACT NO. 74849				
ILLINOIS FED. AID PROJECT				



DATE	
BY	
FINAL SURVEY NO.	
SURVEYED	
PLOTTED	
TEMPLATE	
AREAS CHECKED	

DATE	
BY	
ORIGINAL SURVEY NO.	
SURVEYED	
PLOTTED	
TEMPLATE	
AREAS CHECKED	

MODEL: Default
 FILE NAME: D:\Illinois\pww\DOT\Documents\1001\Office\District 7\Projects\74849\CaddData\CAD\sheet07\74849-15_Sht_Plan.dgn

USER NAME = stefenmk	DESIGNED -	REVISIED -
	DRAWN -	REVISIED -
PLOT SCALE = 20.0000' / in.	CHECKED -	REVISIED -
PLOT DATE = 10/19/2018	DATE -	REVISIED -

**STATE OF ILLINOIS
 DEPARTMENT OF TRANSPORTATION**

CROSS SECTION	
SCALE:	SHEET OF SHEETS
STA. 211+00.00 TO STA. 211+50.00	

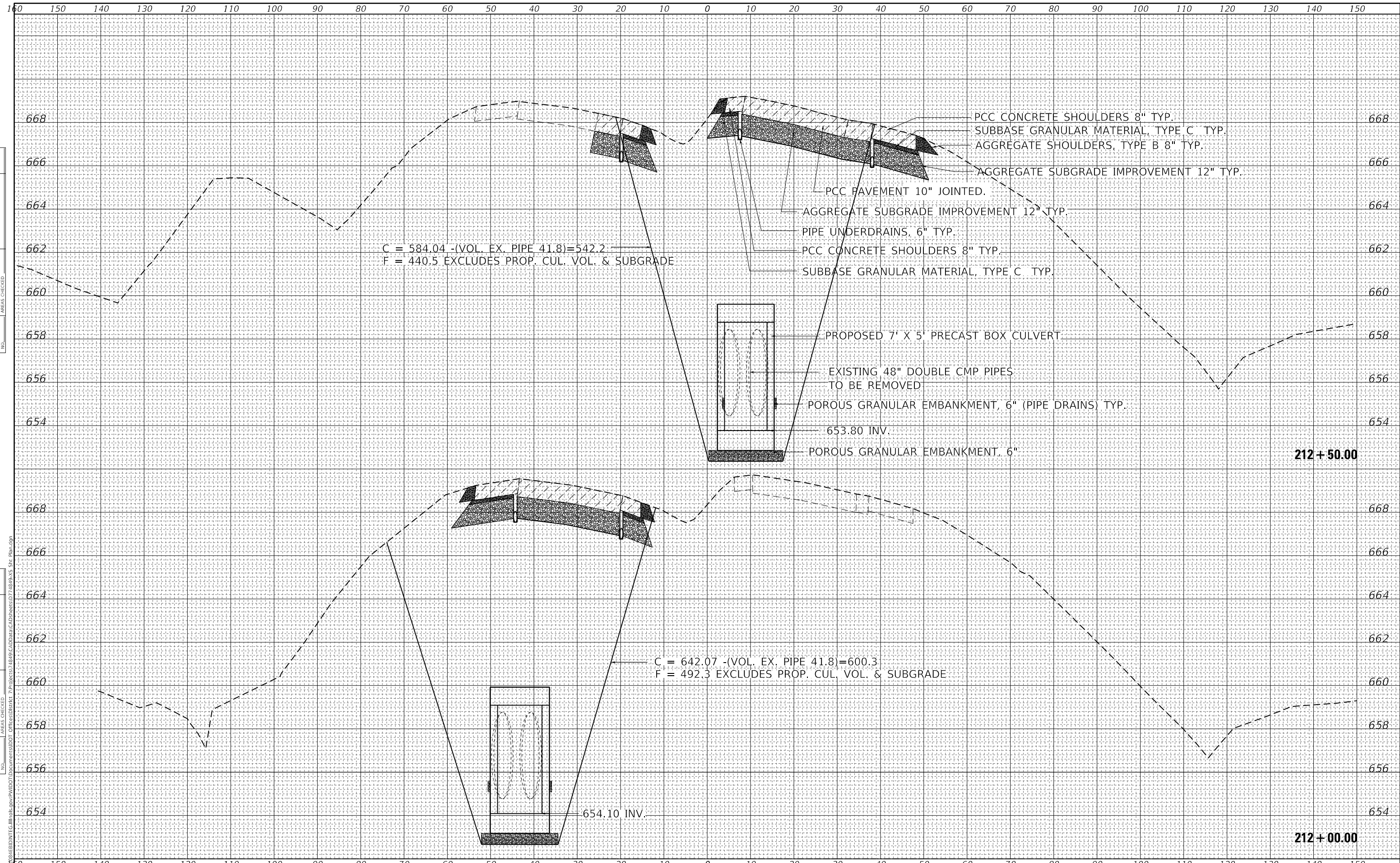
F.A. RTE.	SECTION	COUNTY	TOTAL SHEETS	SHEET NO.
7381	13.14 CR	MACON	16	13
CONTRACT NO. 74849				
ILLINOIS FED. AID PROJECT				

211 + 50.00

211 + 00.00

DATE	
BY	
FINAL SURVEY	SURVEYED
NOTE BOOK	PLOTTED
NO.	TEMPLATE
	AREAS CHECKED

DATE	
BY	
ORIGINAL SURVEY	SURVEYED
NOTE BOOK	PLOTTED
NO.	TEMPLATE
	AREAS CHECKED



C = 584.04 -(VOL. EX. PIPE 41.8)=542.2
 F = 440.5 EXCLUDES PROP. CUL. VOL. & SUBGRADE

C = 642.07 -(VOL. EX. PIPE 41.8)=600.3
 F = 492.3 EXCLUDES PROP. CUL. VOL. & SUBGRADE

**STATE OF ILLINOIS
 DEPARTMENT OF TRANSPORTATION**

CROSS SECTION

USER NAME = stefenmk
DESIGNED -
DRAWN -
PLOT SCALE = 20.0000' / in.
PLotted DATE = 10/19/2018

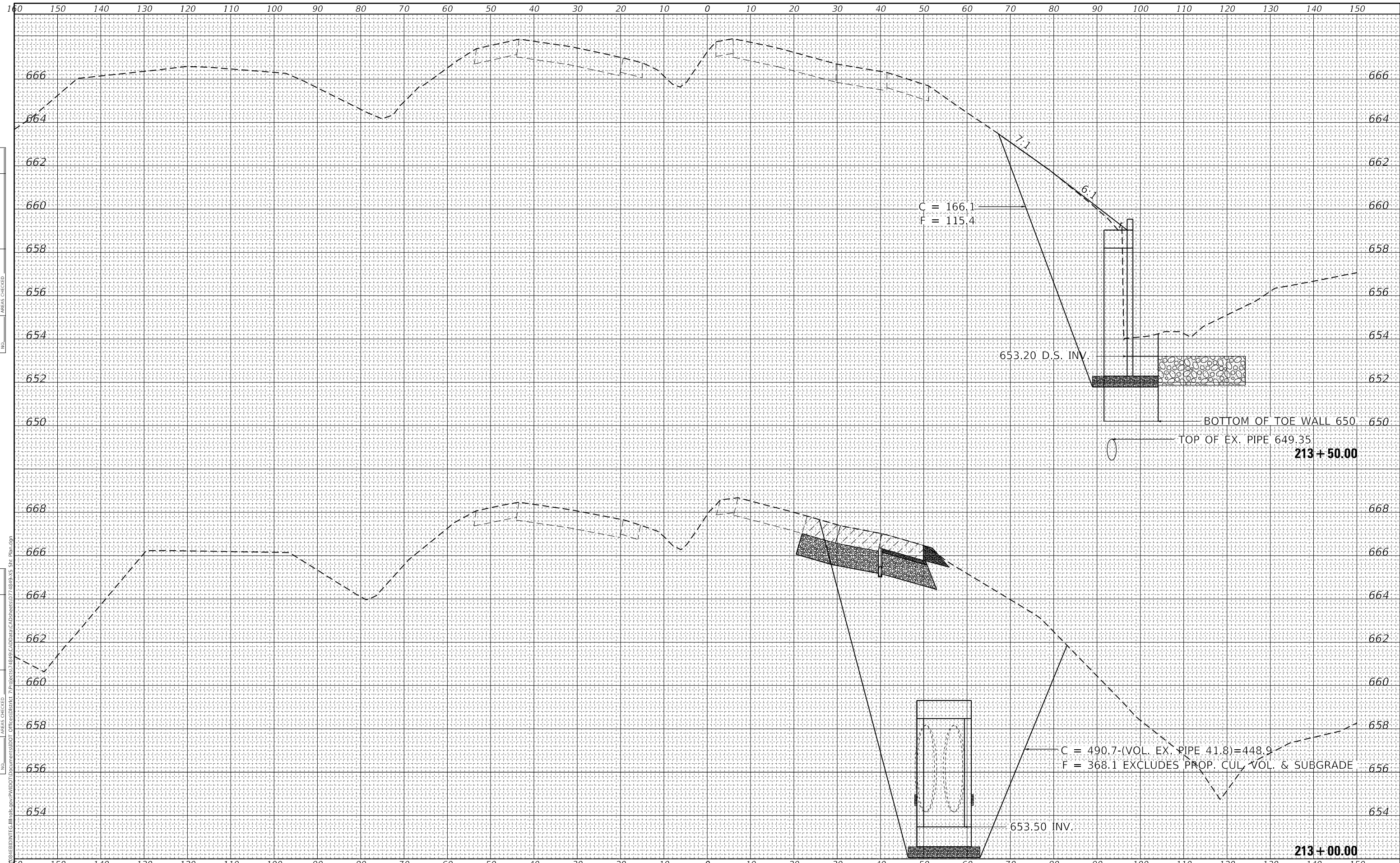
REVISEd -
REVISEd -
REVISEd -
REVISEd -

REVISEd -
REVISEd -
REVISEd -
REVISEd -

SCALE:	SHEET	OF	SHEETS	STA. 212+00.00	TO STA. 212+50.00
--------	-------	----	--------	----------------	-------------------

F.A. RTE.	SECTION	COUNTY	TOTAL SHEETS	SHEET NO.
7381	13.14 CR	MACON	16	14
CONTRACT NO. 74849				
ILLINOIS FED. AID PROJECT				

MODEL: Defaul
 FILE NAME: D:\p\74849\BIDDING\Tc\Illinois\pwp\DOT Documents\DOT Offices\District 7\Projects\74849\CAD\Drawings\07\74849-S St Plan.dwg



DATE	
BY	
FINAL SURVEY NO.	
SURVEYED	
PLOTTED	
TEMPLATE	
AREAS CHECKED	

DATE	
BY	
ORIGINAL SURVEY NO.	
SURVEYED	
PLOTTED	
TEMPLATE	
AREAS CHECKED	

MODEL: Defaul
FILE NAME: dwg1
D:\Projects\74849\CAD\Drawings\74849-15-Site-Plan.dwg

USER NAME = stefenmk	DESIGNED -	REVISED -
PLOT SCALE = 20.0000' / in.	DRAWN -	REVISED -
PLOT DATE = 10/19/2018	CHECKED -	REVISED -
	DATE -	REVISED -

**STATE OF ILLINOIS
DEPARTMENT OF TRANSPORTATION**

CROSS SECTION	
SCALE:	SHEET OF SHEETS STA. 213+00.00 TO STA. 213+50.00

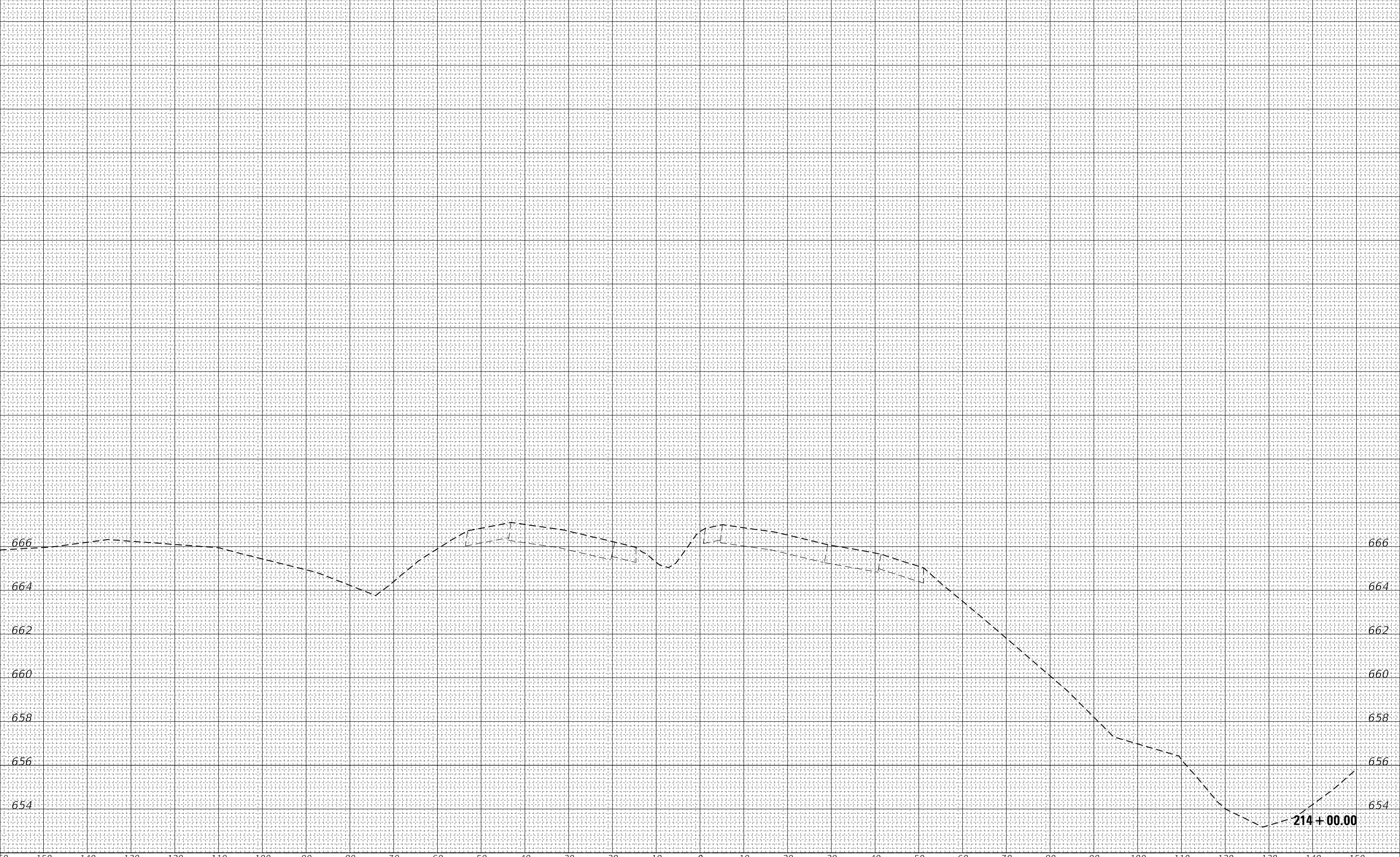
F.A. RTE.	SECTION	COUNTY	TOTAL SHEETS	SHEET NO.
7381	13.14 CR	MACON	16	15
CONTRACT NO. 74849				
ILLINOIS		FED. AID PROJECT		

160 150 140 130 120 110 100 90 80 70 60 50 40 30 20 10 0 10 20 30 40 50 60 70 80 90 100 110 120 130 140 150

FINAL SURVEY NO.	SURVEYED PLOTTED AREAS CHECKED	BY	DATE
NOTE BOOK	TEMPLATE		
	AREAS CHECKED		

ORIGINAL SURVEY NO.	SURVEYED PLOTTED AREAS CHECKED	BY	DATE
NOTE BOOK	TEMPLATE		
	AREAS CHECKED		

MODEL: Default
 FILE NAME: D:\projects\74849-CA\Drawings\DOT Documents\DOT Office\District 7\Projects\74849-CA\Drawings\DOT 74849-15 Sta Plan.dwg



USER NAME = stefenmk	DESIGNED -	REVISED -
	DRAWN -	REVISED -
PLOT SCALE = 20.0000' / 1"	CHECKED -	REVISED -
PLOT DATE = 10/19/2018	DATE -	REVISED -

**STATE OF ILLINOIS
 DEPARTMENT OF TRANSPORTATION**

CROSS SECTION	
SCALE:	SHEET OF SHEETS STA. 214+00.00 TO STA. 214+00.00

F.A. RTE.	SECTION	COUNTY	TOTAL SHEETS	SHEET NO.
7381	13.14 CR	MACON	16	16
CONTRACT NO. 74849				
ILLINOIS FED. AID PROJECT				