

SUMMARY OF QUANTITIES

CODE NUMBER	ITEM	UNIT	TOTAL QUANTITY	ROADWAY 75% FEDERAL 25% LOCAL 0004	WATER MAIN 100% LOCAL 0043	TRAINEES 75% FEDERAL 25% LOCAL 0042	CODE NUMBER	ITEM	UNIT	TOTAL QUANTITY	ROADWAY 75% FEDERAL 25% LOCAL 0004	WATER MAIN 100% LOCAL 0043	TRAINEES 75% FEDERAL 25% LOCAL 0042
20100110	TREE REMOVAL (6 TO 15 UNITS DIAMETER)	UNIT	45	45			550A2680	STORM SEWERS, RUBBER GASKET, CLASS A, TYPE 2 30"	FOOT	20	20		
20100210	TREE REMOVAL (OVER 15 UNITS DIAMETER)	UNIT	96	96			550A2610	STORM SEWERS, RUBBER GASKET, CLASS A, TYPE 2 42"	FOOT	654	654		
20101100	TREE TRUNK PROTECTION	EACH	44	44			550A2620	STORM SEWERS, RUBBER GASKET, CLASS A, TYPE 2 48"	FOOT	927	927		
20101200	TREE ROOT PRUNING	EACH	44	44			550A2630	STORM SEWERS, RUBBER GASKET, CLASS A, TYPE 2 54"	FOOT	555	555		
20200100	EARTH EXCAVATION	CU YD	3,734	3,734			550A2760	STORM SEWERS, RUBBER GASKET, CLASS A, TYPE 3 24"	FOOT	43	43		
20201200	REMOVAL AND DISPOSAL OF UNSUITABLE MATERIAL	CU YD	516	516			550A2800	STORM SEWERS, RUBBER GASKET, CLASS A, TYPE 3 36"	FOOT	357	357		
20800150	TRENCH BACKFILL	CU YD	3,801	5,568	4,233		550A2810	STORM SEWERS, RUBBER GASKET, CLASS A, TYPE 3 42"	FOOT	321	321		
21001000	GEOTECHNICAL FABRIC FOR GROUND STABILIZATION	SQ YD	2,686	2,686			55100500	STORM SEWER REMOVAL 12"	FOOT	958	958		
21101615	TOPSOIL FURNISH AND PLACE, 4"	SQ YD	5,562	5,562			56100500	WATER MAIN 4"	FOOT	25		25	
25000400	NITROGEN FERTILIZER NUTRIENT	POUND	70	70			56100700	WATER MAIN 8"	FOOT	905		905	
25000500	PHOSPHORUS FERTILIZER NUTRIENT	POUND	70	70			56100900	WATER MAIN 12"	FOOT	3,591		3,591	
25000600	POTASSIUM FERTILIZER NUTRIENT	POUND	70	70			56104600	WATER VALVES 2"	EACH	2		2	
25200110	SODDING, SALT TOLERANT	SQ YD	3,562	5,562			56104800	WATER VALVES 4"	EACH	2		2	
25200200	SUPPLEMENTAL WATERING	UNIT	250	250			56105000	WATER VALVES 8"	EACH	14		14	
26000250	TEMPORARY EROSION CONTROL SEEDING	POUND	458	458			56105200	WATER VALVES 12"	EACH	7		7	
28000400	PERIMETER EROSION BARRIER	FOOT	117	117			56106400	ADJUSTING WATER MAIN 8"	FOOT	100		100	
28000500	INLET AND PIPE PROTECTION	EACH	89	89			56200300	WATER SERVICE LINE 1"	FOOT	2,410		2,410	
30300001	AGGREGATE SUBGRADE IMPROVEMENT	CU YD	896	896			56200500	WATER SERVICE LINE 1 1/2"	FOOT	82		82	
30300112	AGGREGATE SUBGRADE IMPROVEMENT 12"	SQ YD	19,407	18,957	450		56200700	WATER SERVICE LINE 2"	FOOT	26		26	
35101400	AGGREGATE BASE COURSE, TYPE B	TON	5,384		5,384		56201120	WATER SERVICE LINE 4"	FOOT	32		32	
35101600	AGGREGATE BASE COURSE, TYPE B 4"	SQ YD	6,052	6,052			56201400	CORPORATION STOPS 1"	EACH	98		98	
35300300	PORTLAND CEMENT CONCRETE BASE COURSE 8"	SQ YD	67	67			56201600	CORPORATION STOPS 1 1/2"	EACH	2		2	
35501308	HOT-MIX ASPHALT BASE COURSE, 6"	SQ YD	448	448			56201800	CORPORATION STOPS 2"	EACH	2		2	
40600290	BITUMINOUS MATERIALS (TACK COAT)	POUND	303	303			56400500	FIRE HYDRANTS TO BE REMOVED	EACH	8		8	
40601005	HOT-MIX ASPHALT REPLACEMENT OVER PATCHES	TON	37	37			56500900	DOMESTIC WATER SERVICE BOXES	EACH	102		102	
40603080	HOT-MIX ASPHALT BINDER COURSE, IL-19.0, N50	TON	73	73			60107600	PIPE UNDERDRAINS, TYPE 2, 4"	FOOT	100	100		
40603335	HOT-MIX ASPHALT SURFACE COURSE, MIX "D", N50	TON	3,590	44	3,546		60220200	MANHOLES, TYPE A, 4-DIAMETER	EACH	8	8		
42000301	PORTLAND CEMENT CONCRETE PAVEMENT 8" (JOINTED)	SQ YD	15,829	15,829			60222900	MANHOLES, TYPE A, 5-DIAMETER	EACH	5	5		
42001300	PROTECTIVE COAT	SQ YD	17,794	17,794			60224075	MANHOLES, TYPE A, 6-DIAMETER	EACH	20	20		
42300200	PORTLAND CEMENT CONCRETE DRIVEWAY PAVEMENT, 6 INCH	SQ YD	757	757			60224125	MANHOLES, TYPE A, 7-DIAMETER	EACH	4	4		
42400200	PORTLAND CEMENT CONCRETE SIDEWALK 5 INCH	SQ FT	45,015	45,015			60248700	VALVE VAULTS, TYPE A, 4-DIAMETER, TYPE 1 FRAME, CLOSED LID	EACH	17		17	
42400300	PORTLAND CEMENT CONCRETE SIDEWALK 6 INCH	SQ FT	3,269	3,269			60248900	VALVE VAULTS, TYPE A, 5-DIAMETER, TYPE 1 FRAME, CLOSED LID	EACH	7		7	
42400800	DETECTABLE WARNINGS	SQ FT	834	834			60250200	CATCH BASINS TO BE ADJUSTED	EACH	74	74		
44000100	PAVEMENT REMOVAL	SQ YD	20,015	18,146	1,869		60255600	MANHOLES TO BE ADJUSTED	EACH	32	32		
44000200	DRIVEWAY PAVEMENT REMOVAL	SQ YD	727	727			60265700	VALVE VAULTS TO BE ADJUSTED	EACH	23		23	
44000500	COMBINATION CURB AND GUTTER REMOVAL	FOOT	8,868	8,868			60500040	REMOVING MANHOLES	EACH	2	2		
44000600	SIDEWALK REMOVAL	SQ FT	48,885	48,885			60500050	REMOVING CATCH BASINS	EACH	6	6		
44002216	HOT-MIX ASPHALT REMOVAL OVER PATCHES, 4"	SQ YD	166	166			60500060	REMOVING INLETS	EACH	35	35		
44201333	CLASS C PATCHES, TYPE III, 8 INCH	SQ YD	28	28			60500105	FILLING MANHOLES	EACH	3		3	
44201359	CLASS C PATCHES, TYPE IV, 10 INCH	SQ YD	80	80			60604400	COMBINATION CONCRETE CURB AND GUTTER, TYPE B-E, 18"	FOOT	8,845	8,845		
44201692	CLASS D PATCHES, TYPE II, 4 INCH	SQ YD	327	327			66900200	NON-SPECIAL WASTE DISPOSAL	CU YD	257	257	300	
44201694	CLASS D PATCHES, TYPE III, 4 INCH	SQ YD	174	174			66900530	SOIL DISPOSAL ANALYSIS	EACH	1	1		
44201696	CLASS D PATCHES, TYPE IV, 4 INCH	SQ YD	579	579			66901001	REGULATED SUBSTANCES PRE-CONSTRUCTION PLAN	LSUM	1	1		
44201765	CLASS D PATCHES, TYPE II, 10 INCH	SQ YD	124	124			66901002	ON-SITE MONITORING OF REGULATED SUBSTANCES	CAL DA	25	25		
44201769	CLASS D PATCHES, TYPE III, 10 INCH	SQ YD	108	108			66901003	REGULATED SUBSTANCES FINAL CONSTRUCTION REPORT	LSUM	1	1		
44201771	CLASS D PATCHES, TYPE IV, 10 INCH	SQ YD	495	495			67100100	MOBILIZATION	LSUM	1	1		
550A2320	STORM SEWERS, RUBBER GASKET, CLASS A, TYPE 1 12"	FOOT	1,440	1,440			70103815	TRAFFIC CONTROL SURVEILLANCE	CAL DAY	100	100		
550A2330	STORM SEWERS, RUBBER GASKET, CLASS A, TYPE 1 16"	FOOT	33	33			70107025	CHANGEABLE MESSAGE SIGN	CAL DA	100	100		
550A2340	STORM SEWERS, RUBBER GASKET, CLASS A, TYPE 1 18"	FOOT	97	97			70300210	TEMPORARY PAVEMENT MARKING LETTERS AND SYMBOLS	SQ FT	395	395		
550A2360	STORM SEWERS, RUBBER GASKET, CLASS A, TYPE 1 24"	FOOT	280	280			70300220	TEMPORARY PAVEMENT MARKING - LINE 4"	FOOT	46,773	46,773		
550A2520	STORM SEWERS, RUBBER GASKET, CLASS A, TYPE 2 12"	FOOT	273	273			70300240	TEMPORARY PAVEMENT MARKING - LINE 6"	FOOT	934	934		
550A2530	STORM SEWERS, RUBBER GASKET, CLASS A, TYPE 2 15"	FOOT	335	335			70300280	TEMPORARY PAVEMENT MARKING - LINE 24"	FOOT	500	500		
550A2540	STORM SEWERS, RUBBER GASKET, CLASS A, TYPE 2 18"	FOOT	210	210			72000100	SIGN PANEL - TYPE 1	SQ FT	243	243		
550A2560	STORM SEWERS, RUBBER GASKET, CLASS A, TYPE 2 24"	FOOT	413	413			72400500	RELOCATE SIGN PANEL ASSEMBLY - TYPE A	EACH	1	1		
							72400600	RELOCATE SIGN PANEL ASSEMBLY - TYPE B	EACH	1	1		

A INDICATES SPECIALTY ITEM
* SEE SPECIAL PROVISIONS

Plot Date: 1/14/2019 2:36:03 PM B:\c\081921

Engineering Enterprises, Inc.
CONSULTING ENGINEERS
52 Wheeler Road
Sugar Grove, Illinois 60554
630.466.6700 / www.eetweb.com

CITY OF ELGIN
150 DEXTER CT.
ELGIN, IL 60120

DESIGNED -
DRAWN -
CHECKED -
DATE -
REVISED - ADDENDUM C - 01/04/19
REVISED -
REVISED -
REVISED -

STATE OF ILLINOIS
DEPARTMENT OF TRANSPORTATION

CHICAGO STREET
SUMMARY OF QUANTITIES

SCALE: SHEET NO. 1 OF 2 SHEETS STA. TO STA.

F.A.U. RTE.	SECTION	COUNTY	TOTAL SHEETS	SHEET NO.
1321	12-00183-00-PV	KANE	128	4
CONTRACT NO. 61E15			ILLINOIS FED. AID PROJECT	


SUMMARY OF QUANTITIES

CODE NUMBER	ITEM	UNIT	TOTAL QUANTITY	ROADWAY 75% FEDERAL 25% LOCAL 0004	WATER MAIN 100% LOCAL 0043	TRAINEES 75% FEDERAL 25% LOCAL 0042
7200100	TELESCOPING STEEL SIGN SUPPORT	FOOT	825	825		
78000200	THERMOPLASTIC PAVEMENT MARKING - LINE 4"	FOOT	80	80		
78005100	EPOXY PAVEMENT MARKING - LETTERS AND SYMBOLS	SQ FT	621	621		
78005110	EPOXY PAVEMENT MARKING - LINE 4"	FOOT	7,066	7,066		
78005130	EPOXY PAVEMENT MARKING - LINE 6"	FOOT	1,276	1,276		
78005150	EPOXY PAVEMENT MARKING - LINE 12"	FOOT	970	970		
78005180	EPOXY PAVEMENT MARKING - LINE 24"	FOOT	285	285		
80500020	SERVICE INSTALLATION - POLE MOUNTED	EACH	2	2		
81028200	UNDERGROUND CONDUIT, GALVANIZED STEEL, 2" DIA.	FOOT	264	264		
81028210	UNDERGROUND CONDUIT, GALVANIZED STEEL, 2 1/2" DIA.	FOOT	13	13		
81028220	UNDERGROUND CONDUIT, GALVANIZED STEEL, 3" DIA.	FOOT	110	110		
81028240	UNDERGROUND CONDUIT, GALVANIZED STEEL, 4" DIA.	FOOT	352	352		
81028390	UNDERGROUND CONDUIT, PVC, 4" DIA.	FOOT	6,730		6,730	
81400100	HANDHOLE	EACH	35	5	30	
81400300	DOUBLE HANDHOLE	EACH	4	4		
85100500	PAINT NEW TRAFFIC SIGNAL POST	EACH	9	9		
87301215	ELECTRIC CABLE IN CONDUIT, SIGNAL NO. 14 2C	FOOT	1,830	1,830		
87301225	ELECTRIC CABLE IN CONDUIT, SIGNAL NO. 14 3C	FOOT	2,304	2,304		
87301245	ELECTRIC CABLE IN CONDUIT, SIGNAL NO. 14 5C	FOOT	2,922	2,922		
87301305	ELECTRIC CABLE IN CONDUIT, LEAD IN, NO. 14 1 PAIR	FOOT	977	977		
87301805	ELECTRIC CABLE IN CONDUIT, SERVICE, NO. 6 2 C	FOOT	196	196		
87301900	ELECTRIC CABLE IN CONDUIT, EQUIPMENT GROUNDING CONDUCTOR, NO. 6 1C	FOOT	943	943		
87502440	TRAFFIC SIGNAL POST, GALVANIZED STEEL 10 FT.	EACH	1	1		
87502480	TRAFFIC SIGNAL POST, GALVANIZED STEEL 14 FT.	EACH	4	4		
87502520	TRAFFIC SIGNAL POST, GALVANIZED STEEL 18 FT.	EACH	4	4		
87800100	CONCRETE FOUNDATION, TYPE A	FOOT	64	64		
87800150	CONCRETE FOUNDATION, TYPE C	FOOT	8	8		
88030310	SIGNAL HEAD, LED, 3-FACE, 3-SECTION, BRACKET MOUNTED	EACH	8	8		
88102717	PEDESTRIAN SIGNAL HEAD, LED, 1-FACE, BRACKET MOUNTED WITH COUNTDOWN TIMER	EACH	2	2		
88102747	PEDESTRIAN SIGNAL HEAD, LED, 2-FACE, BRACKET MOUNTED WITH COUNTDOWN TIMER	EACH	7	7		
88600100	DETECTOR LOOP, TYPE I	FOOT	204	204		
88600700	PREFORMED DETECTOR LOOP	FOOT	155	155		
88700200	LIGHT DETECTOR	EACH	4	4		
88700300	LIGHT DETECTOR AMPLIFIER	EACH	2	2		
88800100	PEDESTRIAN PUSH-BUTTON	EACH	16	16		
89000100	TEMPORARY TRAFFIC SIGNAL INSTALLATION	EACH	2	2		
89502375	REMOVE EXISTING TRAFFIC SIGNAL EQUIPMENT	EACH	2	2		
89502380	REMOVE EXISTING HANDHOLE	EACH	4	4		
89502385	REMOVE EXISTING CONCRETE FOUNDATION	EACH	10	10		
A2006516	TREE, QUERCUS BICOLOR (SWAMP WHITE OAK), 2" CALIPER, BALLED AND BURLAPPED	EACH	2	2		
A2007916	TREE, TILIA AMERICANA REDMOND (REDMOND AMERICAN LINDEN), 2" CALIPER, BALLED AND BURLAPPED	EACH	2	2		
B2000416	TREE, ACER GRISEUM (PAPERBARK MAPLE), 2" CALIPER, TREE FORM, BALLED AND BURLAPPED	EACH	4	4		
B2000772	TREE, AMELANCHIER X GRANDIFLORA AUTUMN BRILLIANCE (AUTUMN BRILLIANCE SERVICE BERRY), 2-1/2" CALIPER, TREE FORM, BALLED AND BURLAPPED	EACH	4	4		
X0324085	EMERGENCY VEHICLE PRIORITY SYSTEM LINE SENSOR CABLE, NO. 20 3/C	FOOT	341	341		
X0325207	TELEVISION INSPECTION OF SEWER	FOOT	4,328		4,328	
X0326440	SURFACE REMOVAL, VARIABLE DEPTH (SPECIAL)	SQ YD	5,367		5,367	
X0326617	PAINTING LIGHT POLE UNIT	EACH	28		28	
X0326661	CURED-IN-PLACE PIPE LINER, 21"	FOOT	1,837		1,837	
X0326662	CURED-IN-PLACE PIPE LINER, 24"	FOOT	1,410		1,410	
X0326738	CLEAN SANITARY MANHOLE	EACH	14		14	
X0327611	REMOVE AND REINSTALL BRICK PAVEMENT	SQ FT	62	62		
X0327979	PAVEMENT MARKING REMOVAL - GRINDING	SQ FT	10,800	10,800		
X0327980	PAVEMENT MARKING REMOVAL - WATER BLASTING	SQ FT	5,820	5,820		

Δ INDICATES SPECIALTY ITEM
* SEE SPECIAL PROVISIONS

CODE NUMBER	ITEM	UNIT	TOTAL QUANTITY	ROADWAY 75% FEDERAL 25% LOCAL 0004	WATER MAIN 100% LOCAL 0043	TRAINEES 75% FEDERAL 25% LOCAL 0042
X1200015	VALVE VAULTS TO BE ABANDONED	EACH	28		28	
X2130010	EXPLORATION TRENCH, SPECIAL	FOOT	600		600	
X4021000	TEMPORARY ACCESS (PRIVATE ENTRANCE)	EACH	35	35		
X4022000	TEMPORARY ACCESS (COMMERCIAL ENTRANCE)	EACH	5	5		
X4023000	TEMPORARY ACCESS (ROAD)	EACH	9	9		
X4060205	COLD MIX ASPHALT MIXTURE	TON	10	10		
X5509900	ABANDON AND FILL EXISTING STORM SEWER	FOOT	519	519		
X5610744	WATER MAIN LINE STOP 4"	EACH	4		4	
X5610748	WATER MAIN LINE STOP 6"	EACH	8		8	
X5610748	WATER MAIN LINE STOP 8"	EACH	4		4	
X5610752	WATER MAIN LINE STOP 12"	EACH	1		1	
X5610756	WATER MAIN LINE STOP 16"	EACH	2		2	
X5620128	ADJUSTING WATER SERVICE LINES	EACH	90		90	
X5630004	CUT AND CAP EXISTING 4" WATER MAIN	EACH	4		4	
X5630006	CUT AND CAP EXISTING 6" WATER MAIN	EACH	8		8	
X5630008	CUT AND CAP EXISTING 8" WATER MAIN	EACH	6		6	
X5630704	CONNECTION TO EXISTING WATER MAIN 4"	EACH	4		4	
X5630706	CONNECTION TO EXISTING WATER MAIN 6"	EACH	8		8	
X5630708	CONNECTION TO EXISTING WATER MAIN 8"	EACH	4		4	
X5630712	CONNECTION TO EXISTING WATER MAIN 12"	EACH	1		1	
X5630716	CONNECTION TO EXISTING WATER MAIN 16"	EACH	2		2	
X5640150	FIRE HYDRANT ASSEMBLY COMPLETE	EACH	16		16	
X8020084	MANHOLE, SPECIAL	EACH	2	2		
X8022810	MANHOLES, SANITARY, 4"-DIAMETER, TYPE 1 FRAME, CLOSED LID	EACH	6		6	
X8026050	SANITARY MANHOLES TO BE ADJUSTED	EACH	20	20		
X8026054	SANITARY MANHOLES TO BE REMOVED	EACH	6		6	
X7010216	TRAFFIC CONTROL AND PROTECTION, (SPECIAL)	L SUM	1	1		
X8250500	LIGHTING UNIT COMPLETE, SPECIAL	EACH	5		5	
X8440120	REMOVE AND RE-ERECT EXISTING LIGHTING UNIT	EACH	28	28		
X8570226	FULL-ACTUATED CONTROLLER AND TYPE IV CABINET, SPECIAL	EACH	2	2		
X8620200	UNINTERRUPTABLE POWER SUPPLY, SPECIAL	EACH	2	2		
XX001470	SANITARY SERVICE CONNECTION	EACH	35		35	
XX004689	SANITARY SERVICE TO BE ADJUSTED	EACH	35		35	
XX005472	DRAINAGE STRUCTURE SPECIAL	EACH	2	2		
XX005855	WATER MAIN CASING PIPE	FOOT	66		66	
XX007031	FRAME AND GRATE, SPECIAL	EACH	89	89		
XX007214	UTILITY MANHOLE	EACH	1	1		
XX007985	SPECIAL FRAME, CLOSED LID	EACH	33	33		
XX008169	PEDESTRIAN PUSH-BUTTON POST, SPECIAL	EACH	7	7		
XX008824	CATCH BASINS, SPECIAL	EACH	80	80		
XX009091	SANITARY MANHOLE LINING	FOOT	169		169	
Z0015000	CURB STOPS 1"	EACH	96		96	
Z0015200	CURB STOPS 1 1/2"	EACH	2		2	
Z0019300	CURB STOPS 2"	EACH	2		2	
Z0030850	TEMPORARY INFORMATION SIGNING	SQ FT	248	248		
Z0056604	STORM SEWER (WATER MAIN REQUIREMENTS) 8 INCH	FOOT	22		22	
Z0057500	SANITARY SEWER 24"	FOOT	20		20	
Z0062458	TEMPORARY PAVEMENT (VARIABLE DEPTH)	TON	60	60		
Z0066600	STABILIZED DRIVEWAYS 8"	SQ YD	44	44		
Z0066700	STABILIZED DRIVEWAYS 10"	SQ YD	2	2		
Z0073510	TEMPORARY TRAFFIC SIGNAL TIMING	EACH	2	2		
Z0076100	TRACK REMOVAL	FOOT	500	500		
Z0076600	TRAINEES	HOURLY	1,500			1,500
Z0076604	TRAINEES TRAINING PROGRAM GRADUATE	HOURLY	1,500			1,500

By: G. G. G. 2/2/2019 2:38:12 PM

 Engineering Enterprises, Inc. CONSULTING ENGINEERS 52 Wheeler Road Sugar Grove, Illinois 60554 630.466.6700 / www.eelweb.com	CITY OF ELGIN 150 DEXTER CT. ELGIN, IL 60120	DESIGNED -	REVISED - ADDENDUM C - 01/04/19	STATE OF ILLINOIS DEPARTMENT OF TRANSPORTATION	CHICAGO STREET SUMMARY OF QUANTITIES		F.A.U. RTE.	SECTION	COUNTY	TOTAL SHEETS	SHEET NO.
		DRAWN -	REVISED -		1321	12-00183-00-PV	KANE	128	5		
		CHECKED -	REVISED -	SCALE: SHEET NO. 2 OF 2 SHEETS STA. TO STA.		ILLINOIS FED. AID PROJECT		CONTRACT NO. 61E15			
		DATE -	REVISED -								

Path: H:\30563610\ACTION\30563610.dwg Plot: Eng 6/21/19 10:48:11 AM

ROADWAY QUANTITIES									
LOCATION	AGG SUBGRADE IMPR 12	PCC BC 8	HMA BASE CSE 6	BIT MATLS TACK CT	HMA BC IL-19.0 N50	HMA SC "D" N50	PCC PVT 8 JOINTED	PROTECTIVE COAT	COMB CC&G TB6 18
	SQ YD	SQ YD	SQ YD	POUND	TON	TON	SQ YD	SQ YD	FOOT
96+56 TO 99+50	1414						1218	1371	690
99+50 TO 104+50	3010		125.2	84	18	11	2515	2791	1241
104+50 TO 109+50	2389						2056	2300	1190
109+50 TO 114+50	2678		57.9	39	8	5	2276	2526	1128
114+50 TO 119+00	2498		69.5	47	10	6	2106	2341	1051
119+00 TO 124+00	2843	66.8	97.8	66	23	14	2393	2627	1051
124+00 TO 128+00	2078		35	23	5	3	1772	1963	855.9
128+00 TO 131+05.63	1779		63	42	9	5	1491	1650	716.5
FULTON ST 800+00 TO 802+00	61							41	184.0
GENEVA ST 193+00 TO 197+50	227							152	682.0
GENEVA ST 197+50 TO 199+00	47							31	14C.0
TOTAL	19024	67	448	303	73	44	15829	17794	8845

PATCHING							
LOCATION	HMA REFL OVER PATCH	HMA RM OV PATCH 4	CL C PATCH T3 8	CL C PATCH T4 10	CL D PATCH T2 10	CL D PATCH T3 10	CL D PATCH T4 10
	TON	SQ YD	SQ YD	SQ YD	SQ YD	SQ YD	SQ YD
96+56 TO 99+50	15	67		34			
99+50 TO 104+50							72
104+50 TO 109+50							
109+50 TO 114+50							72
114+50 TO 119+00						36	
119+00 TO 124+00	9	41	28		14		
124+00 TO 128+00						24	
128+00 TO 131+05.63						47	
FULTON ST 800+00 TO 802+00	13	58		46			
GENEVA ST 193+00 TO 197+50					90		319.5
GENEVA ST 197+50 TO 199+00					20		31
TOTAL	37	166	28	80	124	108	495

TEMPORARY ROADWAY QUANTITIES				
LOCATION	AGG BASE CSE TY B	PAVEMENT REM	HMA SURF REM VD	HMA SC "D" N50 4"
	TON	SQ YD	SQ YD	TON
96+56 TO 99+50	449	131	457	273
99+50 TO 104+50	1286	376	778	563
104+50 TO 109+50	616	180	778	461
109+50 TO 114+50	1066	312	778	510
114+50 TO 119+00	887	260	700	472
119+00 TO 124+00	1059	310	778	536
124+00 TO 128+00	646	189	622	397
128+00 TO 131+05.63	375	110	475	334
TOTAL	6384	1869	5367	3546

LANDSCAPING							
LOCATION	TOPSOIL F & P 4	NITROGEN FERT NUTR	PHOSPHORUS FERT NUTR	POTASSIUM FERT NUTR	SODDING SALT TOLERANT	SJPP WAIRING	TEMP EROS CONTR SEED
	SQ YD	POUND	POUND	POUND	SQ YD	UNIT	POUND
96+56 TO 99+50	88.2	1.09	1.09	1.09	88.2	4.0	7.29
99+50 TO 104+50	630.6	7.82	7.82	7.82	630.6	28.4	52.11
104+50 TO 109+50	669.4	8.30	8.30	8.30	669.4	30.1	55.32
109+50 TO 114+50	812.2	10.07	10.07	10.07	812.2	36.5	67.12
114+50 TO 119+00	867.8	10.76	10.76	10.76	867.8	39.0	71.72
119+00 TO 124+00	853.5	10.58	10.58	10.58	853.5	38.4	70.54
124+00 TO 128+00	612.3	7.59	7.59	7.59	612.3	27.6	50.60
128+00 TO 131+05.63	440.1	5.46	5.46	5.46	440.1	19.8	36.37
FULTON ST 800+00 TO 802+00	95.2	1.18	1.18	1.18	95.2	4.3	7.37
GENEVA ST 193+00 TO 197+50	311.4	3.96	3.96	3.96	311.4	14.0	25.24
GENEVA ST 197+50 TO 199+00	181.0	2.24	2.24	2.24	181.0	3.1	14.96
TOTAL	5562	70	70	70	5562	250	458

PAVEMENT MARKING						
LOCATION	THPL PVT MK LINE 4	EPOXY PVT MK LTR-SYM	EPOXY PVT MK LINE 4	EPOXY PVT MK LINE 6	EPOXY PVT MK LINE 12	EPOXY PVT MK LINE 24
	FOOT	SQ FT	FOOT	FOOT	FOOT	FOOT
96+56 TO 99+50		129	651	151		19
99+50 TO 104+50		80	718	294	270	58
104+50 TO 109+50		50	1070			
109+50 TO 114+50	20	109	1012		264	57
114+50 TO 119+00	60	72	903		282	68
119+00 TO 124+00		56	670	335	78	39
124+00 TO 128+00		32	1266	73	45	16
128+00 TO 131+05.63		92	776	423	31	28
TOTAL	80	621	7066	1276	970	285

TEMPORARY PATCHING				
LOCATION	OFFSET	CL D PATCH T2 4	CL D PATCH T3 4	CL D PATCH T4 4
		SQ YD	SC YD	SQ YD
98+36	0' RT	10.3		
99+19	0' RT	10.3		
99+40	0' RT			27.4
100+00	50' LT	12.8		
100+00	23' LT			32.2
100+00	34' RT		21.0	
100+43	0' RT	10.3		
100+82	0' RT	10.3		
101+15	0' RT	10.3		
101+62	0' RT	10.3		
102+13	0' RT	10.3		
102+59	0' RT	10.3		
102+73	0' RT	10.3		
103+02	0' RT	10.3		
103+45	0' RT	10.3		
103+92	0' RT			40.6
103+92	0' RT			25.2
103+96	19' LT		21.0	
103+96	26' LT			27.3
109+42	0' RT	10.3		
109+69	0' RT	10.3		
109+80	0' RT	10.3		
110+18	0' RT			39.3
110+23	35' RT			28.0
110+40	19' LT			28.0
113+13	0' RT	10.3		
113+48	0' RT	10.3		
114+17	0' RT	10.3		
114+64	0' RT	10.3		
114+90	0' RT	10.3		
116+15	32' RT			29.4
116+29	19' LT		20.1	
116+29	0' RT			38.9
117+54	0' RT	10.3		
118+51	0' RT		20.6	
119+12	0' RT	10.3		
119+53	19' LT			27.5
119+56	19' RT			26.6
119+83	0' RT			45.3
120+34	0' RT	10.3		
121+12	0' RT	10.3		
121+84	0' RT	10.3		
122+02	0' RT	10.3		
122+57	0' RT			26.7
122+87	0' RT		15.1	
122+94	51' RT	5.2		
123+08	45' RT		20.3	
123+58	0' RT	10.3		
124+53	0' RT		18.5	
124+66	19' LT			43.1
125+28	0' RT	10.3		
126+39	0' RT	10.3		
126+59	0' RT		18.5	
127+58	0' RT	10.3		
128+20	0' RT			26.5
128+79	37' LT		18.9	
128+90	19' LT			27.5
128+90	0' RT			39.3
129+47	0' RT	10.3		
TOTAL		327	174	579

GROUND STABILIZATION SCHEDULE			
LOCATION	REM & DISP UNSUIT MATL	AGG SUBGRADE IMPROV	GEOTECH FABRIC FOR GND STABIL
	CU YD	CU YD	SQ YD
96+56 TO 99+50		41	122
99+50 TO 104+50		75	225
104+50 TO 109+50		78	233
109+50 TO 114+50	240	27C	811
114+50 TO 119+00	160	191	574
119+00 TO 124+00	116	132	396
124+00 TO 128+00		59	177
128+00 TO 131+05.63		50	149
TOTAL	516	89E	2686

AGGREGATE FOR TEMPORARY ACCESS			
LOCATION	TEMPORARY ACCESS (PE)	TEMPORARY ACCESS (CE)	TEMPORARY ACCESS (ROAD)
	EACH	EACH	EACH
96+56 TO 99+50		3	
99+50 TO 104+50	5		2
104+50 TO 109+50	2	2	
109+50 TO 114+50	5		1
114+50 TO 119+00	1		1
119+00 TO 124+00	10		3
124+00 TO 128+00	10		1
128+00 TO 131+05.63	2		1
FULTON ST 800+00 TO 802+00			
GENEVA ST 193+00 TO 197+50			
GENEVA ST 197+50 TO 199+00			
TOTAL	35	5	9

EARTHWORK QUANTITIES				
STATION	EARTH EXCAVATION	AVAILABLE FILL	REQUIRED FILL	EARTHWORK BALANCE WASTE (+) SHORTAGE (-)
	A	B = 0.85 A	C	D = B - C
	CU YD	CU YD	CU YD	CU YD
96+58 TO 99+50	231	196	0	196
99+50 TO 104+50	448	380	14	367
104+50 TO 109+50	546	464	37	427
109+50 TO 114+50	561	477	88	389
114+50 TO 119+00	388	329	72	257
119+00 TO 124+00	817	694	130	565
124+00 TO 128+00	375	319	68	251
128+00 TO 131+05.63	371	315	23	292
TOTAL	3734	3174	431	2743

EROSION CONTROL				
LOCATION	TREE TRUNK PROTECTION	TREE ROOT PRUNING	PER EROS BARRIER	INLET AND PIPE PROTECTION
	EACH	EACH	FOOT	EACH
96+56 TO 99+50	5	5		8
99+50 TO 104+50	3	3		18
104+50 TO 109+50	1	1		10
109+50 TO 114+50	12	12	9	10
114+50 TO 119+00	8	8	39	10
119+00 TO 124+00	8	8	69	10
124+00 TO 128+00	5	5		4
128+00 TO 131+05.63	2	2		6
FULTON ST 800+00 TO 802+00				2
GENEVA ST 193+00 TO 197+50				9
GENEVA ST 197+50 TO 199+00				2
TOTAL	44	44	117	89

TREE REMOVAL				
STATION	LT/RT	OFFSET	TREE REMOV 6-1E	TREE REMOV OVER 15
			UNIT	UNIT
113+58	LT	23.8		28
116+42	RT	73.0	9	
119+12	LT	24.4	12	
123+18	LT	24.7		44
130+50	LT	24.3		24
GENEVA ST 194+93	RT	21.8	6	
GENEVA ST 195+59	RT	22.0	6	
GENEVA ST 197+38	RT	21.7	6	
GENEVA ST 198+35	RT	21.8	6	
TOTAL			45	96

SEE EROSION CONTROL AND LANDSCAPE PLANS, SHEETS 36-40 FOR LOCATIONS OF THE TREE TRUNK PROTECTION AND TREE ROOT PRUNING.

NON-SPECIAL WASTE DISPOSAL SCHEDULE			
STATION	CORRESPONDING SOIL BORING FROM PSI	DEPTH OF SOIL OF CONCERN	WASTE DISPOSAL CU YD
	98+50 TO 100+00	SB-2	0'-7'
103+00 TO 111+00	SB-6	5'-8'	300
TOTAL			557

NOTE: FROM STA 103+00 TO STA 111+00 THE EXCAVATION FOR THE ROADWAY CONSTRUCTION WILL BE MORE SHALLOW THAN 5'. QUANTITY LISTED IS FOR UTILITY (WATERMAIN AND SANITARY SEWER) WORK. FOR WATERMAIN, QUANTITY IS FOR 3' TRENCH AT 3' HEIGHT FOR 800'. FOR SANITARY, QUANTITY IS FOR REMOVAL OF 3 SANITARY MANHOLES.

Plot: 1/4/2019 12:02:03 PM By: cja/tuch

WATER MAIN AND APPURTENANCES

LOCATION	TRENCH BACKFILL CU YD	WATER MAIN 4" FOOT	WATER MAIN 8" FOOT	WATER MAIN 12" FOOT	WATER VALVES 2" EACH	WATER VALVES 4" EACH	WATER VALVES 8" EACH	WATER VALVES 12" EACH	WATER SERVICE LINE 1" FOOT	WATER SERVICE LINE 1.5" FOOT	WATER SERVICE LINE 2" FOOT	WATER SERVICE LINE 4" FOOT	CORP STOPS 1" EACH	CORP STOPS 1.5" EACH	CORP STOPS 2" EACH	DOM WATER SVC BOXES EACH	VV, TY A, 4"-DIA TY 1 FRAME, CL EACH	VV, TY A, 5"-DIA, TY 1 FRAME, CL EACH	CUT AND CAP EX 4" WATER MAIN EACH	CUT AND CAP EX 6" WATER MAIN EACH	CUT AND CAP EX 8" WATER MAIN EACH	CONN TO EX WATER MAIN 4" EACH	CONN TO EX WATER MAIN 6" EACH	CONN TO EX WATER MAIN 8" EACH	CONN TO EX WATER MAIN 12" EACH	CONN TO EX WATER MAIN 16" EACH	WATER MAIN LINE STOP 4" EACH	WATER MAIN LINE STOP 5" EACH	WATER MAIN LINE STOP 8" EACH	WATER MAIN LINE STOP 12" EACH	WATER MAIN LINE STOP 16" EACH	FIRE HYD ASSEM COMP EACH	WATER MAIN CASING PIPE FOOT	CURB STOPS 1" EACH	CURB STOPS 1.5" EACH	CURB STOPS 2" EACH	
95+00 TO 99+50	411		12	338		1	1	1	125			12	4			4	?	1			3				1	1					2			4			
99+50 TO 104+50	675		154	515		1	2	2	388	38		20	13	1		14	?	2	2	1		2	1		2	2	2	1			2			13	1		
104+50 TO 109+50	439			500					211				12			12																		12			
109+50 TO 114+50	582		156	300					298				12			12	?	1	0	2				2										12			
114+50 TO 119+00	493		140	450					283				12			12	?	1	1	1		1	1				1						12				
119+00 TO 124+00	665	15	245	300					361				15			15	?	1	1		3	1		3		1			3			2	44	15			
124+00 TO 128+00	486	5	60	400	1				340			13	12			13	?			1																1	
128+00 TO 131+06	316	5	138	298	1				190			13	7			8	?	1		3														7		1	
GENEVA ST 193+00-197+50	146								214				11			11																		11			
GENEVA ST 197+50-199+00	20									44			1			1																				1	
TOTAL (NON-PART)	4233	25	905	3501	2	2	14	7	2410	82	26	32	98	2	2	102	17	7	4	8	6	4	8	4	1	2	4	8	4	1	2	16	66	98	2	2	

** ALL WATER MAIN ITEMS ARE NON-PARTICIPATORY

REMOVAL

STATION	PAVEMENT REM SQ YD	DRIVE PAVEMENT REM SQ YD	SIDEWALK REM SQ FT	STORM SEWER REM 12 FOOT	ABAN & FILL EX STORM SEWER FOOT	REMOVE EXISTING CATCH BASIN EACH	REMOVE EXISTING MANHOLE EACH	REMOVE EXISTING INLET EACH	REMOVE EXISTING SANITARY MANHOLE EACH	VALVE VAULT TO BE ABAN & FILLED EACH	FILL EX MANHOLE EACH	CURB AND GUTTER REMOVAL FOOT	REMOVE EX FIRE HYDRANT EACH
96+56 TO 99+50	1218	43.8	6329	70		1		2	1	3		690	
99+50 TO 104+50	2640	52.9	6743	262		3		5		8	1	1340	2
104+50 TO 109+50	2056	70.8	6028	43				2	2	3	1	1026	1
109+50 TO 114+50	2334	73.8	5927	87		1		4	1	4		1119	1
114+50 TO 119+00	2177	11.9	4929	60				2		4		1068	1
119+00 TO 124+00	2491	123.1	6059	205				6		6	1	1123	1
124+00 TO 128+00	1807	128.4	4806	43				1	1	2		857	1
128+00 TO 131+05.63	1554	19.6	3039	160				4	1	2		720	1
FULTON ST 800+00 TO 802+00	58.6	7.8	28	89				2				157	
GENEVA ST 193+00 TO 197+50	102.0	2883		430	1	1	7					627.6	
GENEVA ST 197+50 TO 199+00	41.0	1424										140	
FROM TEMP ROADWAY SCHED **	1869												
SUB TOTAL PART	18146	727	48885	958	519	6	2	35	6	29	3	8868	8
SJB TOTAL NON-PART	1869												
TOTAL	20015	727	48885	958	519	6	2	35	6	29	3	8868	8

QUANTITIES WITH ASTERISKS (**) ARE NON-PARTICIPATORY

SANITARY MANHOLES TO BE ADJUSTED

STATION	SAN MH EACH
96+56 TO 99+50	3
99+50 TO 104+50	3
104+50 TO 109+50	2
109+50 TO 114+50	4
114+50 TO 119+00	2
119+00 TO 124+00	3
124+00 TO 128+00	2
128+00 TO 131+05.63	1
TOTAL	20

SANITARY SEWER

LOCATION	CURED-IN-PLACE PIPE LINER, 21" FOOT	CURED-IN-PLACE PIPE LINER, 24" FOOT	SANITARY MANHOLE LINING FOOT	SANITARY MH T A-1C EACH
95+00 TO 99+50		393	20	1
99+50 TO 104+50		395	37	
104+50 TO 109+50		622		2
109+50 TO 114+50	402		44	1
114+50 TO 119+00	510		28	
119+00 TO 124+00	496		27	
124+00 TO 128+00	429		13	1
128+00 TO 131+06				1
TOTAL	1837	1410	169	6

STORM SEWER STRUCTURES TO BE ADJUSTED

STATION	CB EACH	MH EACH
96+56 TO 99+50	8	3
99+50 TO 104+50	16	7
104+50 TO 109+50	10	5
109+50 TO 114+50	10	5
114+50 TO 119+00	10	4
119+00 TO 124+00	10	5
124+00 TO 128+00	4	2
128+00 TO 131+05.63	6	1
TOTAL	74	32

VALVE VAULTS TO BE ADJUSTED

STATION	VV EACH
96+56 TO 99+50	3
99+50 TO 104+50	5
104+50 TO 109+50	0
109+50 TO 114+50	3
114+50 TO 119+00	3
119+00 TO 124+00	5
124+00 TO 128+00	1
128+00 TO 131+05.63	3
TOTAL	23

TEMPORARY PAVEMENT MARKING & PAVEMENT MARKING REMOVAL

STAGE	TEMP PVT NK LTR & SYM SQ FT	TEMP PM LINE 4 FOOT	TEMP PM LINE 6 FOOT	TEMP PM LINE 24 FOOT	PVT MKG REM - GRIND SQ FT	PVT MKG REM - WTR BLAST SQ FT
STAGE 1	124.8	5279	232	100	300	72.8
STAGE 2	72.8	5405	235	100	3500	124.8
STAGE 3	124.8	5279	232	100	3500	72.8
STAGE 4	72.8	5405	235	100	3500	124.8
STAGE 5		5405		100		424.8
BEFORE PERMANENT MARKING						5000
TOTAL	395	46773	934	500	10800	5820

PLAN ALLOWANCE

ITEM	UNITS	QUANTITY
EXPLORATION TRENCH, SPECIAL	FOOT	600
SANITARY SERVICE CONNECTION	EACH	35
SANITARY SERVICE TO BE ADJUSTED	EACH	35
ADJUSTING WATER SERVICE LINES	EACH	90
ADJUSTING WATER MAIN 8"	FOOT	100
TEMPORARY PAVEMENT (VARIABLE DEPTH)	TON	60
TRACK REMOVAL	FOOT	500
COLD MIX ASPHALT MIXTURE	TON	10

PAVEMENT MARKING REMOVAL IN STAGE 1 TO REMOVE EXISTING CONFLICTING PAVEMENT MARKINGS.
 PAVEMENT MARKING REMOVAL IN STAGE 2 TO REMOVE CONFLICTING PAVEMENT MARKINGS FROM STAGE 1.
 PAVEMENT MARKING REMOVAL IN STAGE 3 TO REMOVE CONFLICTING PAVEMENT MARKINGS FROM STAGE 2.
 PAVEMENT MARKING REMOVAL AFTER STAGE 4 TO REMOVE CONFLICTING PAVEMENT MARKING FROM STAGE 3
 PAVEMENT MARKING REMOVAL AFTER STAGE 5 TO REMOVE CONFLICTING PAVEMENT MARKING FROM STAGE 5
 AND BEFORE OPENING TO TRAFFIC.

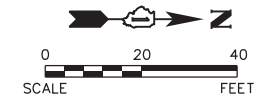
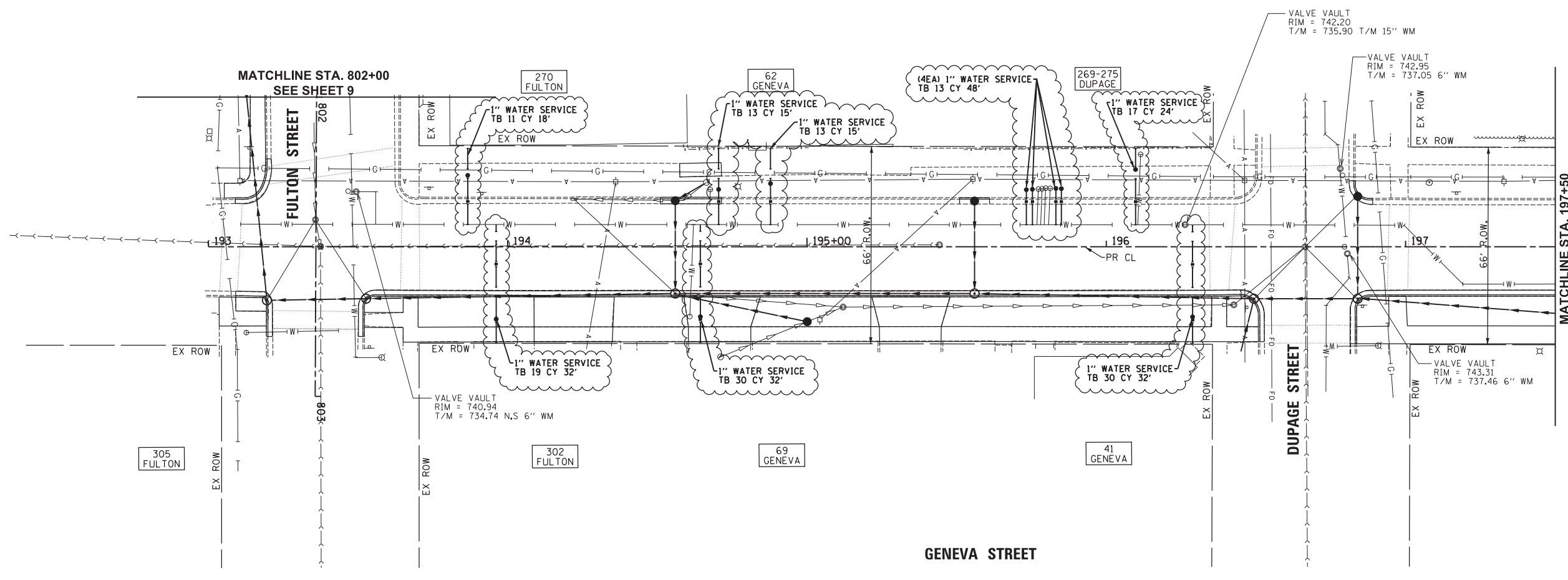
DRIVEWAY PAVEMENT AND SIDEWALK

LOCATION	LT./RT.	AGG BASE CSE B 4 SQ YD	PC2 DRIVEWAY PAVT 6 SQ YD	PC CONC SIDEWALK 5 SQ FT	PC CONC SIDEWALK 6 SQ FT	DETECTABLE WARNINGS SQ FT	STAB DRIVEWAYS 8 SQ YD	STAB DRIVEWAYS 10 SQ YD
96+56 TO 99+50	LT/RT	679.2		6113		35		
97+99 PCC ALLEY	LT	20.1	12		73			
98+66 PCC CE	LT	23.2	14		83			
98+82 PCC ALLEY	RT	16.7	10		60			1
99+50 TO 104+50	LT/RT	709.6		6387		175		
102+26.50 PCC PE	LT	14.3	9		50			
102+37 PCC ALLEY	RT	15.9	9		60			1
102+39 PCC PE	LT	22.8	14		81		2	
102+79 PCC PE	RT	22.8	13		92		1	
102+88 PCC PE	RT	18.2	10		73		1	
104+50 TO 109+50	LT/RT	621.6		5594		22		
105+47 PCC CE	RT	71.7	44		247			
105+69.50 PCC PE	LT	20.4	13		65			
107+30 PCC PE	LT	20.7	14		60		1	
108+34 PCC PE	LT	17.4	10		62		8	
109+50 TO 114+50	LT/RT	620.3		5583		95		
109+52.50 PCC PE	LT	22.7	16		59			
112+77 PCC PE	RT	26.9	16		101		2	
112+94 PCC PE	RT	17.4	10		64		1	
113+35 PCC PE	LT	22.1	15		60			
114+29 PCC PE	RT	22.4	16		60			
114+50 TO 119+00	LT/RT	541.0		4869		102		
114+78.50 PCC PE	LT	16.8	10		60			
119+00 TO 124+00	LT/RT	607.5		5468		130		
120+49 PCC PE	LT	14.9	8		60		5	
120+66 PCC PE	RT	26.2	20		60			
120+86 PCC PE	RT	19.1	12		60		6	
121+45 PCC PE	RT	17.4	11		60		6	
121+70 PCC PE	LT	16.4	10		55		1	
121+79 PCC PE	LT	15.0	9		50		1	
122+29 PCC PE	RT	17.5	11		60		5	
122+39.50 PCC PE	LT	19.3	13		60			
123+04 PCC PE	LT	19.0	12		60			
123+99 PCC PE	RT	18.2	11		66			
124+00 TO 128+00	LT/RT	460.3		4143		25		
124+14 PCC PE	RT	12.7	8		46			
124+43 PCC PE	RT	23.0	17		57			
124+88 PCC PE	RT	22.8	16		60			
126+03 PCC PE	LT	42.1	29		114			
126+21 PCC PE	LT	21.5	15		61			
126+55 PCC PE	RT	27.9	20		72			
126+72 PCC PE	RT	28.4	20		73			
126+84.50 PCC PE	LT	17.8	11		60			
127+27 PCC PE	LT	17.3	11		60			
127+76 PCC PE	RT	17.7	11		60		1	
128+00 TO 131+05.63	LT/RT	324.3		2919		91		
129+81 PCC PE	LT	18.9	12		60			
130+99 PCC PE	LT	18.1	11		61		1	
FULTON ST 800+00 TO 802+00	RT	79.7		718		76		
FULTON ST 800+33 PCC CE	RT	29.0	29					
FULTON ST 800+73 PCC CE	RT	30.6	31					

PLAN	SURVEYED	DATE
NOTE BOOK	PLOTTED	BY
NO.	CHECKED	
	BY	
	DATE	
	BY	
	DATE	

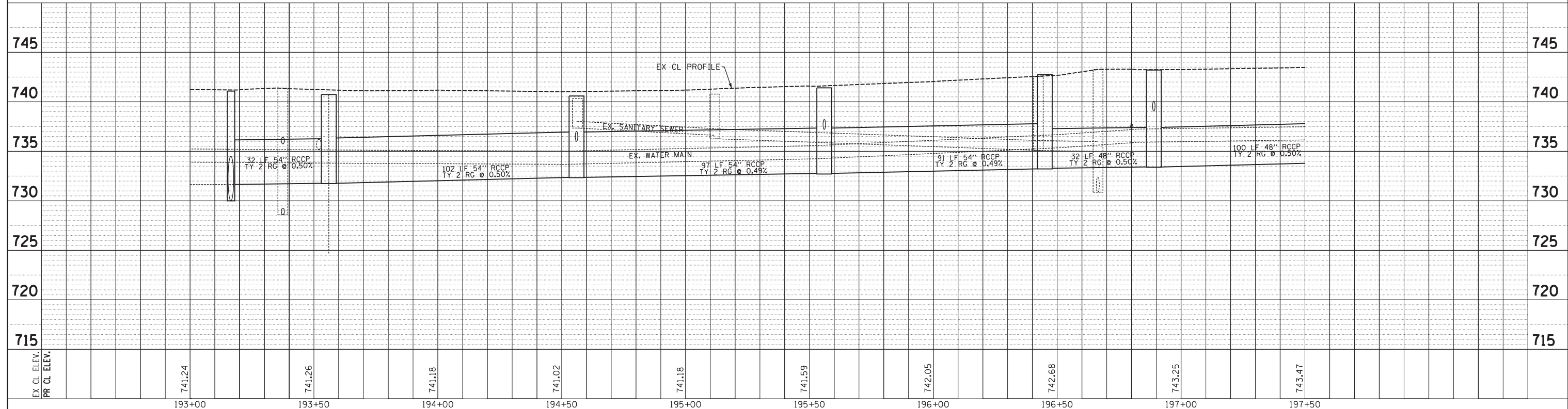
PROFILE	SURVEYED	DATE
NOTE BOOK	PLOTTED	BY
NO.	CHECKED	
	BY	
	DATE	
	BY	
	DATE	

Plot: 1/4/2019 12:02:21 PM By: cjt/uch



- NOTES**
- CONTRACTOR TO LOWER WATER MAIN PRESSURE TO APPROXIMATELY 20 PSI USING EXISTING VALVES AND FIRE HYDRANTS DURING REMOVAL AND SLEEVING OF EXISTING SERVICE CONNECTIONS. THIS WORK IS INCLUDED IN THE COST OF WATER SERVICE LINE OF THE DIAMETER SPECIFIED.
 - CONTRACTOR TO USE FORD STAINLESS STEEL REPAIR SLEEVE TO SEAL THE EXISTING MAIN ONCE THE EXISTING CORPORATION STOP IS REMOVED. THIS WORK IS INCLUDED IN THE COST OF WATER SERVICE LINE OF THE DIAMETER SPECIFIED.
 - CONTRACTOR TO USE FORD STAINLESS STEEL SADDLE STYLE FS 300 TO TAP THE NEW SERVICE TAPS TO BE INSTALLED A MINIMUM OF 5 FEET AWAY FROM EXISTING OR NEW SERVICE. THIS WORK IS INCLUDED IN THE COST OF CORPORATION STOP OF THE SPECIFIED DIAMETER.

SCALE:
HORIZONTAL 1" = 20'
VERTICAL 1" = 5'

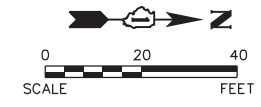
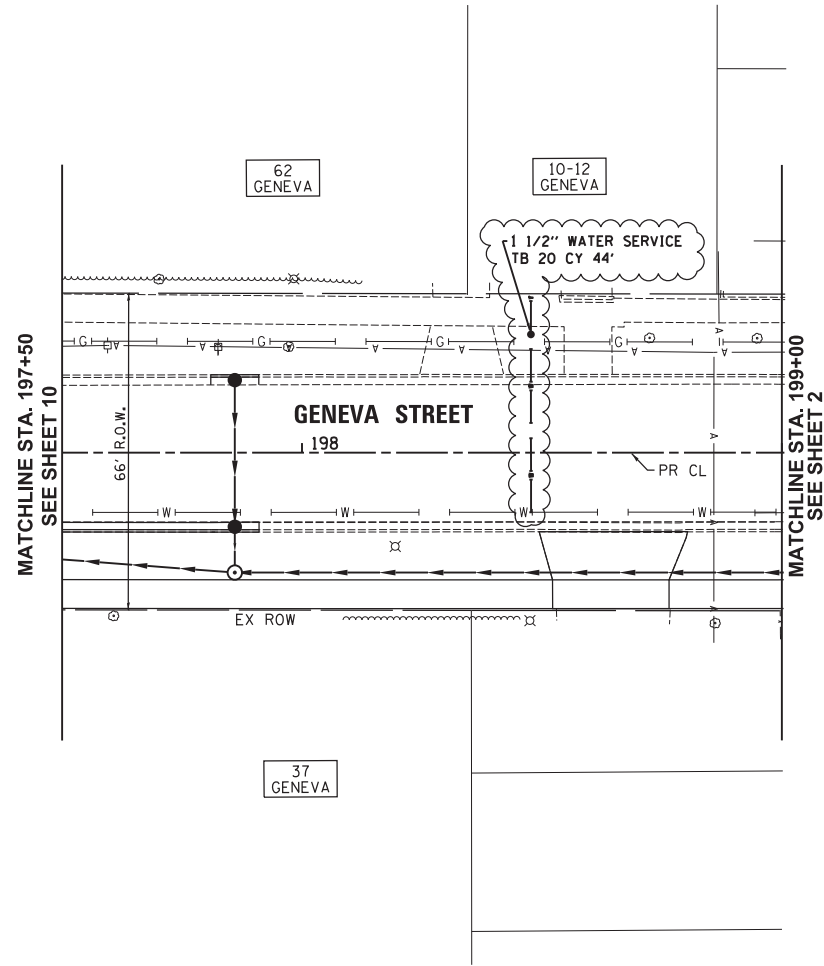


Engineering Enterprises, Inc. CONSULTING ENGINEERS 52 Wheeler Road Sugar Grove, Illinois 60554 630.466.6700 / www.eeiweb.com	CITY OF ELGIN 150 DEXTER CT. ELGIN, IL 60120	DESIGNED -	REVISED - ADDENDUM C - 01/04/19	STATE OF ILLINOIS DEPARTMENT OF TRANSPORTATION	CHICAGO STREET WATER AND SANITARY PLAN AND PROFILE - GENEVA STREET		F.A.U. RTE. 1321	SECTION 12-00183-00-PV	COUNTY KANE	TOTAL SHEETS 128	SHEET NO. 50A
		DRAWN -	REVISED -		SCALE: 1"=20' SHEET NO. 1 OF 2 SHEETS STA. 193+00 TO STA. 197+50		CONTRACT NO. 61E15 ILLINOIS FED. AID PROJECT				
DATE -		REVISED -									

PLAN	SURVEYED	BY	DATE
	PLOTTED		
	CHECKED		
	RT. OF WAY		
	CADD FILE NAME		
	NO.		

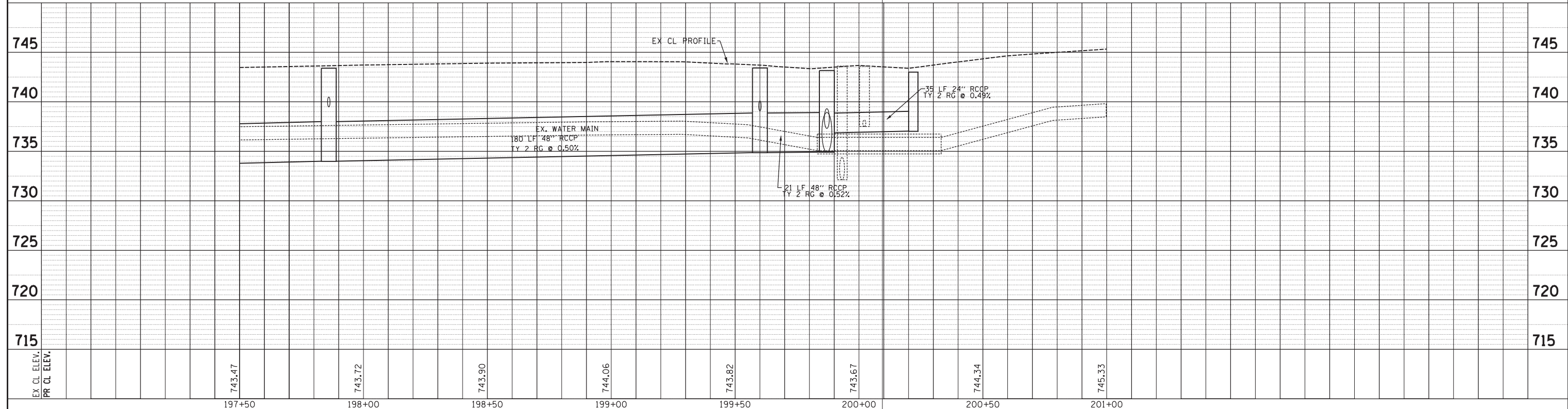
PROFILE	SURVEYED	BY	DATE
	PLOTTED		
	CHECKED		
	STRUCTURE NOTATIONS		
	NO.		

Plot: 1/4/2019 12:02:21 PM By: cjt/fuch



- NOTES**
- CONTRACTOR TO LOWER WATER MAIN PRESSURE TO APPROXIMATELY 20 PSI USING EXISTING VALVES AND FIRE HYDRANTS DURING REMOVAL AND SLEEVING OF EXISTING SERVICE CONNECTIONS. THIS WORK IS INCLUDED IN THE COST OF WATER SERVICE LINE OF THE DIAMETER SPECIFIED.
 - CONTRACTOR TO USE FORD STAINLESS STEEL REPAIR SLEEVE TO SEAL THE EXISTING MAIN ONCE THE EXISTING CORPORATION STOP IS REMOVED. THIS WORK IS INCLUDED IN THE COST OF WATER SERVICE LINE OF THE DIAMETER SPECIFIED.
 - CONTRACTOR TO USE FORD STAINLESS STEEL SADDLE STYLE FS 300 TO TAP THE NEW SERVICE LINE ON THE EXISTING MAIN. NEW SERVICE TAPS TO BE INSTALLED A MINIMUM OF 5 FEET AWAY FROM EXISTING OR NEW SERVICE. THIS WORK IS INCLUDED IN THE COST OF CORPORATION STOP OF THE SPECIFIED DIAMETER.

SCALE:
HORIZONTAL 1" = 20'
VERTICAL 1" = 5'



Engineering Enterprises, Inc. CONSULTING ENGINEERS 52 Wheeler Road Sugar Grove, Illinois 60554 630.466.6700 / www.eeiweb.com	CITY OF ELGIN 150 DEXTER CT. ELGIN, IL 60120	DESIGNED -	REVISED - ADDENDUM C - 01/04/19	STATE OF ILLINOIS DEPARTMENT OF TRANSPORTATION	CHICAGO STREET WATER AND SANITARY PLAN AND PROFILE - GENEVA STREET		F.A.U. R.T.E.	SECTION	COUNTY	TOTAL SHEETS	SHEET NO.
		DRAWN -	REVISED -		1321	12-00183-00-PV	KANE	128	51A		
CHECKED -	REVISED -	CONTRACT NO. 61E15					ILLINOIS FED. AID PROJECT				
DATE -	REVISED -	SCALE: 1"=20'			SHEET NO. 2 OF 2 SHEETS		STA. 197+50 TO STA. 201+00				

Path: H:\SBSK\Proj\EG104\Drawn\Final Eng\EG104-P-P_S&M-WA.RCP.dgn