

STAGE 2	QTY	UNITS
EARTH EXCAVATION	5.1	SQ FT
EMBANKMENT	13.5	SQ FT
UNSUITABLE MATERIAL	0.0	SQ FT
TOPSOIL EXCAVATION	0.0	SQ FT
TOPSOIL PLACEMENT	5.1	SQ FT

STAGE 3	QTY	UNITS
EARTH EXCAVATION	0.5	SQ FT
EMBANKMENT	2.3	SQ FT
UNSUITABLE MATERIAL	0.0	SQ FT
TOPSOIL EXCAVATION	0.0	SQ FT
TOPSOIL PLACEMENT	23.3	SQ FT

STAGE 2	QTY	UNITS
EARTH EXCAVATION	5.9	SQ FT
EMBANKMENT	12.4	SQ FT
UNSUITABLE MATERIAL	0.0	SQ FT
TOPSOIL EXCAVATION	0.0	SQ FT
TOPSOIL PLACEMENT	5.0	SQ FT

STAGE 3	QTY	UNITS
EARTH EXCAVATION	0.6	SQ FT
EMBANKMENT	2.3	SQ FT
UNSUITABLE MATERIAL	0.0	SQ FT
TOPSOIL EXCAVATION	0.0	SQ FT
TOPSOIL PLACEMENT	24.5	SQ FT

FILE NAME = aht-xash_kirk.dgn



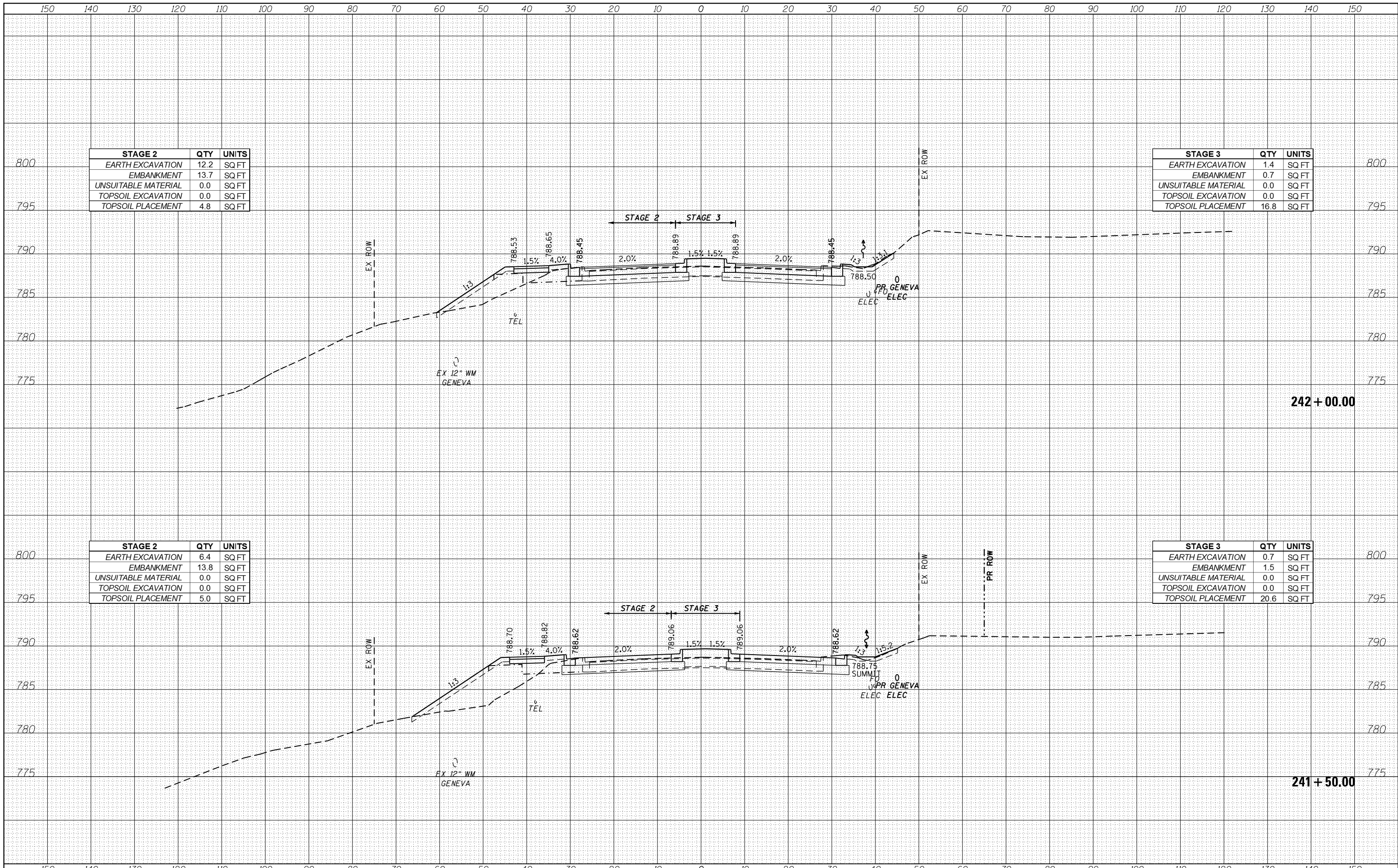
USER NAME - TEG	DESIGNED - VJM	REVISED -
PLOT SCALE = 20.0000' / in.	DRAWN - JBH	REVISED -
PLOT DATE = 11/6/2018	CHECKED - BLP	REVISED -
	DATE - 11/6/2018	REVISED -

STATE OF ILLINOIS
DEPARTMENT OF TRANSPORTATION

CROSS SECTIONS
KIRK ROAD

SCALE: 1"=10' SHEET 26 OF 35 SHEETS STA. 241+00.00 TO STA. 241+15.00

F.A.P. RTE.	SECTION	COUNTY	TOTAL SHEETS	SHEET NO.
363/360	11-00201-04-CH	KANE	410	401
CONTRACT NO. 61E97				
ILLINOIS FED. AID PROJECT				



STAGE 2	QTY	UNITS
EARTH EXCAVATION	12.2	SQ FT
EMBANKMENT	13.7	SQ FT
UNSUITABLE MATERIAL	0.0	SQ FT
TOPSOIL EXCAVATION	0.0	SQ FT
TOPSOIL PLACEMENT	4.8	SQ FT

STAGE 3	QTY	UNITS
EARTH EXCAVATION	1.4	SQ FT
EMBANKMENT	0.7	SQ FT
UNSUITABLE MATERIAL	0.0	SQ FT
TOPSOIL EXCAVATION	0.0	SQ FT
TOPSOIL PLACEMENT	16.8	SQ FT

STAGE 2	QTY	UNITS
EARTH EXCAVATION	6.4	SQ FT
EMBANKMENT	13.8	SQ FT
UNSUITABLE MATERIAL	0.0	SQ FT
TOPSOIL EXCAVATION	0.0	SQ FT
TOPSOIL PLACEMENT	5.0	SQ FT

STAGE 3	QTY	UNITS
EARTH EXCAVATION	0.7	SQ FT
EMBANKMENT	1.5	SQ FT
UNSUITABLE MATERIAL	0.0	SQ FT
TOPSOIL EXCAVATION	0.0	SQ FT
TOPSOIL PLACEMENT	20.6	SQ FT

FILE NAME = sht-xssh_kirk.dgn



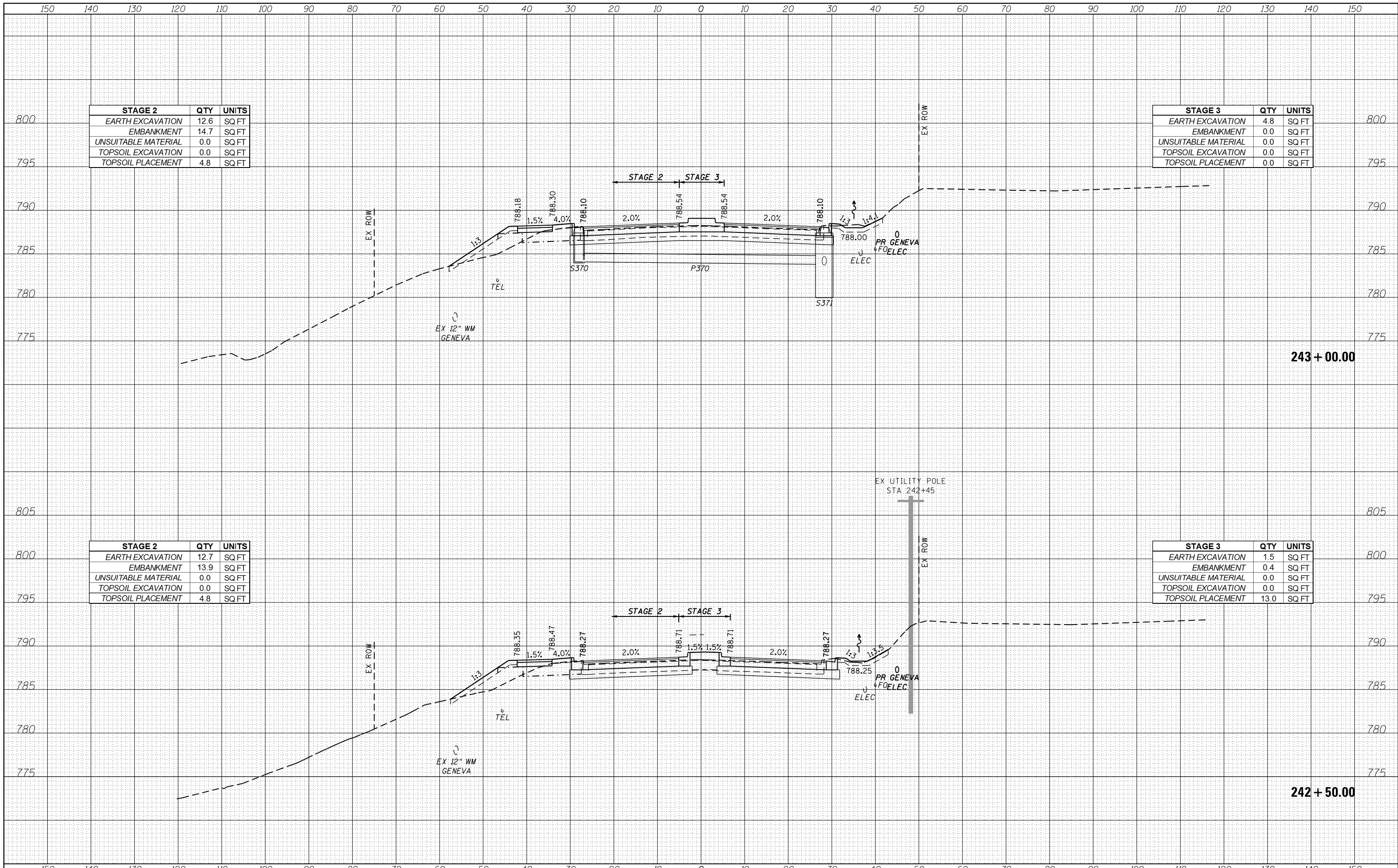
USER NAME = TEG	DESIGNED - VJM	REVISED -
PLOT SCALE = 20.0000' / in.	DRAWN - JBH	REVISED -
PLOT DATE = 11/6/2018	CHECKED - BLP	REVISED -
	DATE - 11/6/2018	REVISED -

STATE OF ILLINOIS
DEPARTMENT OF TRANSPORTATION

CROSS SECTIONS
KIRK ROAD

SCALE: 1"=10' SHEET 27 OF 35 SHEETS STA. 241+50.00 TO STA. 242+00.00

F.A.P. RTE. 363/360	SECTION 11-00201-04-CH	COUNTY KANE	TOTAL SHEETS 410	SHEET NO. 402
			CONTRACT NO. 61E97	
ILLINOIS FED. AID PROJECT				



STAGE 2		
	QTY	UNITS
EARTH EXCAVATION	12.6	SQ FT
EMBANKMENT	14.7	SQ FT
UNSUITABLE MATERIAL	0.0	SQ FT
TOPSOIL EXCAVATION	0.0	SQ FT
TOPSOIL PLACEMENT	4.8	SQ FT

STAGE 3		
	QTY	UNITS
EARTH EXCAVATION	4.8	SQ FT
EMBANKMENT	0.0	SQ FT
UNSUITABLE MATERIAL	0.0	SQ FT
TOPSOIL EXCAVATION	0.0	SQ FT
TOPSOIL PLACEMENT	0.0	SQ FT

STAGE 2		
	QTY	UNITS
EARTH EXCAVATION	12.7	SQ FT
EMBANKMENT	13.9	SQ FT
UNSUITABLE MATERIAL	0.0	SQ FT
TOPSOIL EXCAVATION	0.0	SQ FT
TOPSOIL PLACEMENT	4.8	SQ FT

STAGE 3		
	QTY	UNITS
EARTH EXCAVATION	1.5	SQ FT
EMBANKMENT	0.4	SQ FT
UNSUITABLE MATERIAL	0.0	SQ FT
TOPSOIL EXCAVATION	0.0	SQ FT
TOPSOIL PLACEMENT	13.0	SQ FT

FILE NAME = aht-xash_L_Kirk.dgn



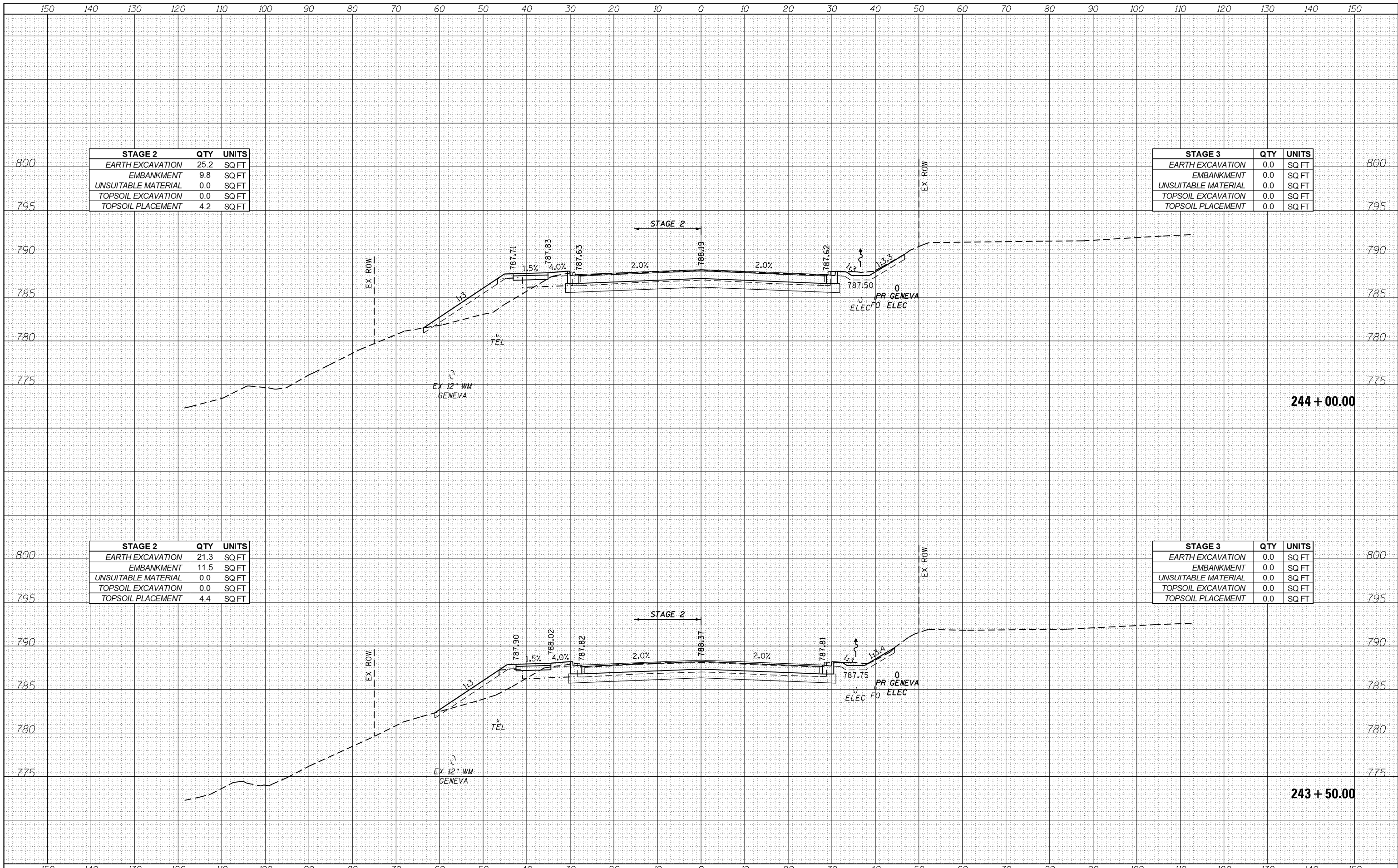
USER NAME = TEG	DESIGNED - VJM	REVISED -
PLOT SCALE = 20.0000' / in.	DRAWN - JBH	REVISED -
PLOT DATE = 11/6/2018	CHECKED - BLP	REVISED -
	DATE - 11/6/2018	REVISED -

STATE OF ILLINOIS
DEPARTMENT OF TRANSPORTATION

CROSS SECTIONS
KIRK ROAD

SCALE: 1"=10' SHEET 28 OF 35 SHEETS STA. 242+50.00 TO STA. 243+00.00

F.A.P. RTE. 363/360	SECTION 11-00201-04-CH	COUNTY KANE	TOTAL SHEETS 410	SHEET NO. 403
				CONTRACT NO. 61E97
ILLINOIS FED. AID PROJECT				



STAGE 2	QTY	UNITS
EARTH EXCAVATION	25.2	SQ FT
EMBANKMENT	9.8	SQ FT
UNSUITABLE MATERIAL	0.0	SQ FT
TOPSOIL EXCAVATION	0.0	SQ FT
TOPSOIL PLACEMENT	4.2	SQ FT

STAGE 3	QTY	UNITS
EARTH EXCAVATION	0.0	SQ FT
EMBANKMENT	0.0	SQ FT
UNSUITABLE MATERIAL	0.0	SQ FT
TOPSOIL EXCAVATION	0.0	SQ FT
TOPSOIL PLACEMENT	0.0	SQ FT

STAGE 2	QTY	UNITS
EARTH EXCAVATION	21.3	SQ FT
EMBANKMENT	11.5	SQ FT
UNSUITABLE MATERIAL	0.0	SQ FT
TOPSOIL EXCAVATION	0.0	SQ FT
TOPSOIL PLACEMENT	4.4	SQ FT

STAGE 3	QTY	UNITS
EARTH EXCAVATION	0.0	SQ FT
EMBANKMENT	0.0	SQ FT
UNSUITABLE MATERIAL	0.0	SQ FT
TOPSOIL EXCAVATION	0.0	SQ FT
TOPSOIL PLACEMENT	0.0	SQ FT

FILE NAME = aht-xash_kirk.dgn



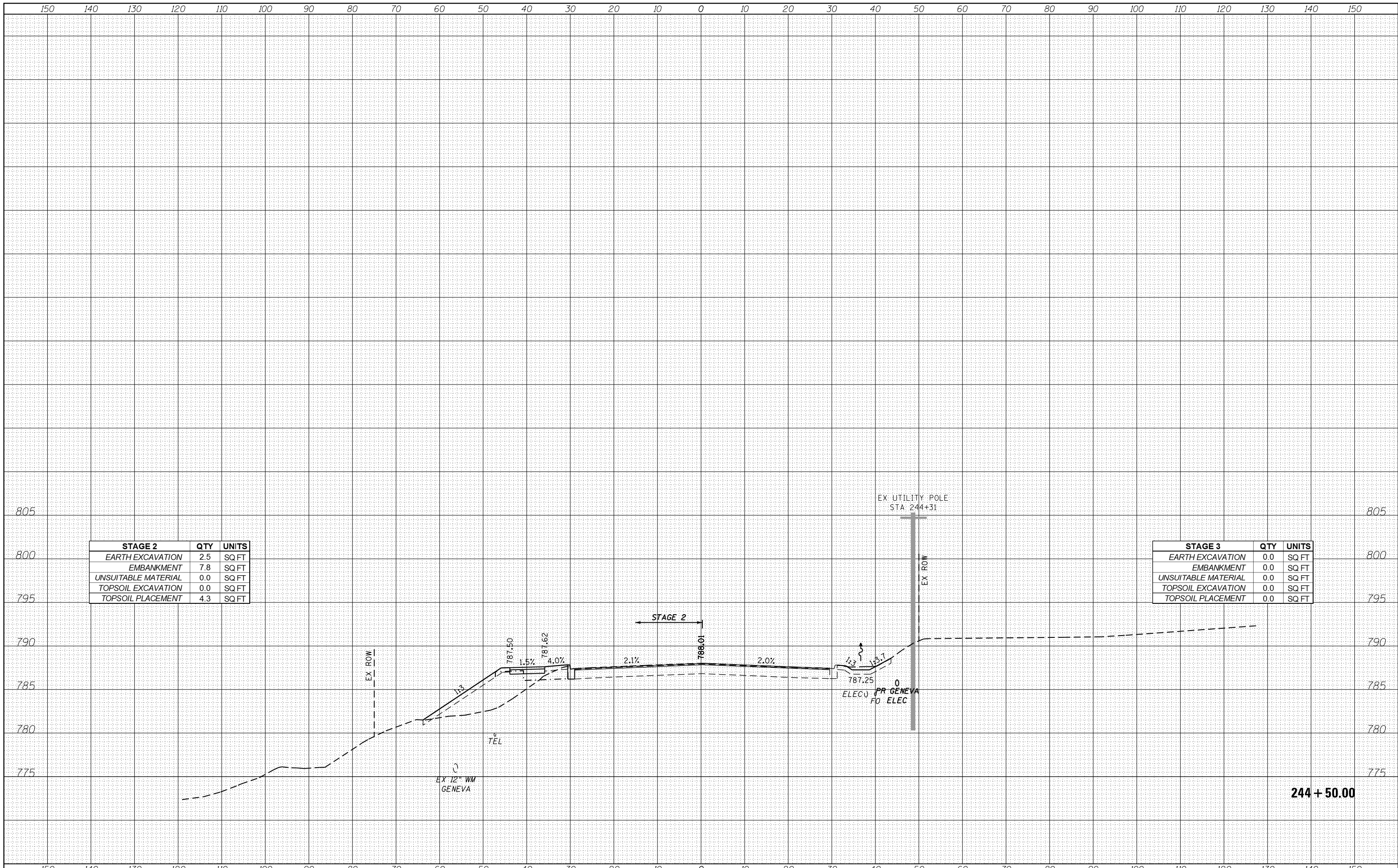
USER NAME - TEG	DESIGNED - VJM	REVISED -
PLOT SCALE = 20.0000' / in.	DRAWN - JBH	REVISED -
PLOT DATE = 11/6/2018	CHECKED - BLP	REVISED -
	DATE - 11/6/2018	REVISED -

STATE OF ILLINOIS
DEPARTMENT OF TRANSPORTATION

CROSS SECTIONS
KIRK ROAD

SCALE: 1"=10' SHEET 29 OF 35 SHEETS STA. 243+50.00 TO STA. 244+00.00

F.A.P. RTE. 363/360	SECTION 11-00201-04-CH	COUNTY KANE	TOTAL SHEETS 410	SHEET NO. 404
			CONTRACT NO. 61E97	
ILLINOIS FED. AID PROJECT				



STAGE 2	QTY	UNITS
EARTH EXCAVATION	2.5	SQ FT
EMBANKMENT	7.8	SQ FT
UNSUITABLE MATERIAL	0.0	SQ FT
TOPSOIL EXCAVATION	0.0	SQ FT
TOPSOIL PLACEMENT	4.3	SQ FT

STAGE 3	QTY	UNITS
EARTH EXCAVATION	0.0	SQ FT
EMBANKMENT	0.0	SQ FT
UNSUITABLE MATERIAL	0.0	SQ FT
TOPSOIL EXCAVATION	0.0	SQ FT
TOPSOIL PLACEMENT	0.0	SQ FT

244 + 50.00

FILE NAME = aht-xash_L_Kirk.dgn



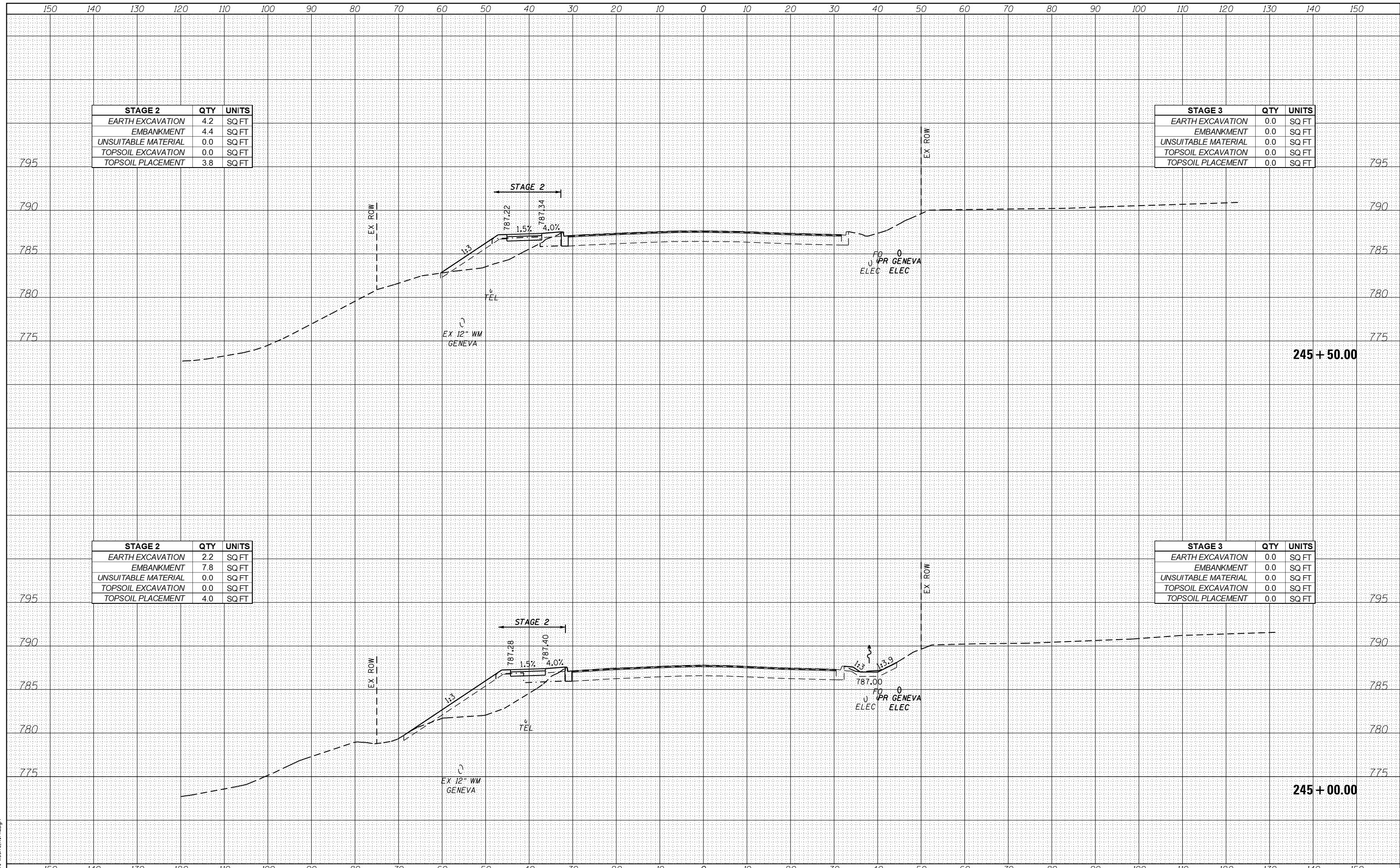
USER NAME = TEG	DESIGNED - VJM	REVISED -
	DRAWN - JBH	REVISED -
PLOT SCALE = 20.0000' / in.	CHECKED - BLP	REVISED -
PLOT DATE = 11/6/2018	DATE - 11/6/2018	REVISED -

STATE OF ILLINOIS
DEPARTMENT OF TRANSPORTATION

CROSS SECTIONS
KIRK ROAD

SCALE: 1"=10' SHEET 30 OF 35 SHEETS STA. 244+50.00 TO STA. 244+60.00

F.A.P. RTE. 363/360	SECTION 11-00201-04-CH	COUNTY KANE	TOTAL SHEETS 410	SHEET NO. 405
				CONTRACT NO. 61E97
ILLINOIS FED. AID PROJECT				



STAGE 2		
	QTY	UNITS
EARTH EXCAVATION	4.2	SQ FT
EMBANKMENT	4.4	SQ FT
UNSUITABLE MATERIAL	0.0	SQ FT
TOPSOIL EXCAVATION	0.0	SQ FT
TOPSOIL PLACEMENT	3.8	SQ FT

STAGE 3		
	QTY	UNITS
EARTH EXCAVATION	0.0	SQ FT
EMBANKMENT	0.0	SQ FT
UNSUITABLE MATERIAL	0.0	SQ FT
TOPSOIL EXCAVATION	0.0	SQ FT
TOPSOIL PLACEMENT	0.0	SQ FT

STAGE 2		
	QTY	UNITS
EARTH EXCAVATION	2.2	SQ FT
EMBANKMENT	7.8	SQ FT
UNSUITABLE MATERIAL	0.0	SQ FT
TOPSOIL EXCAVATION	0.0	SQ FT
TOPSOIL PLACEMENT	4.0	SQ FT

STAGE 3		
	QTY	UNITS
EARTH EXCAVATION	0.0	SQ FT
EMBANKMENT	0.0	SQ FT
UNSUITABLE MATERIAL	0.0	SQ FT
TOPSOIL EXCAVATION	0.0	SQ FT
TOPSOIL PLACEMENT	0.0	SQ FT

FILE NAME = aht-xash_kirk.dgn



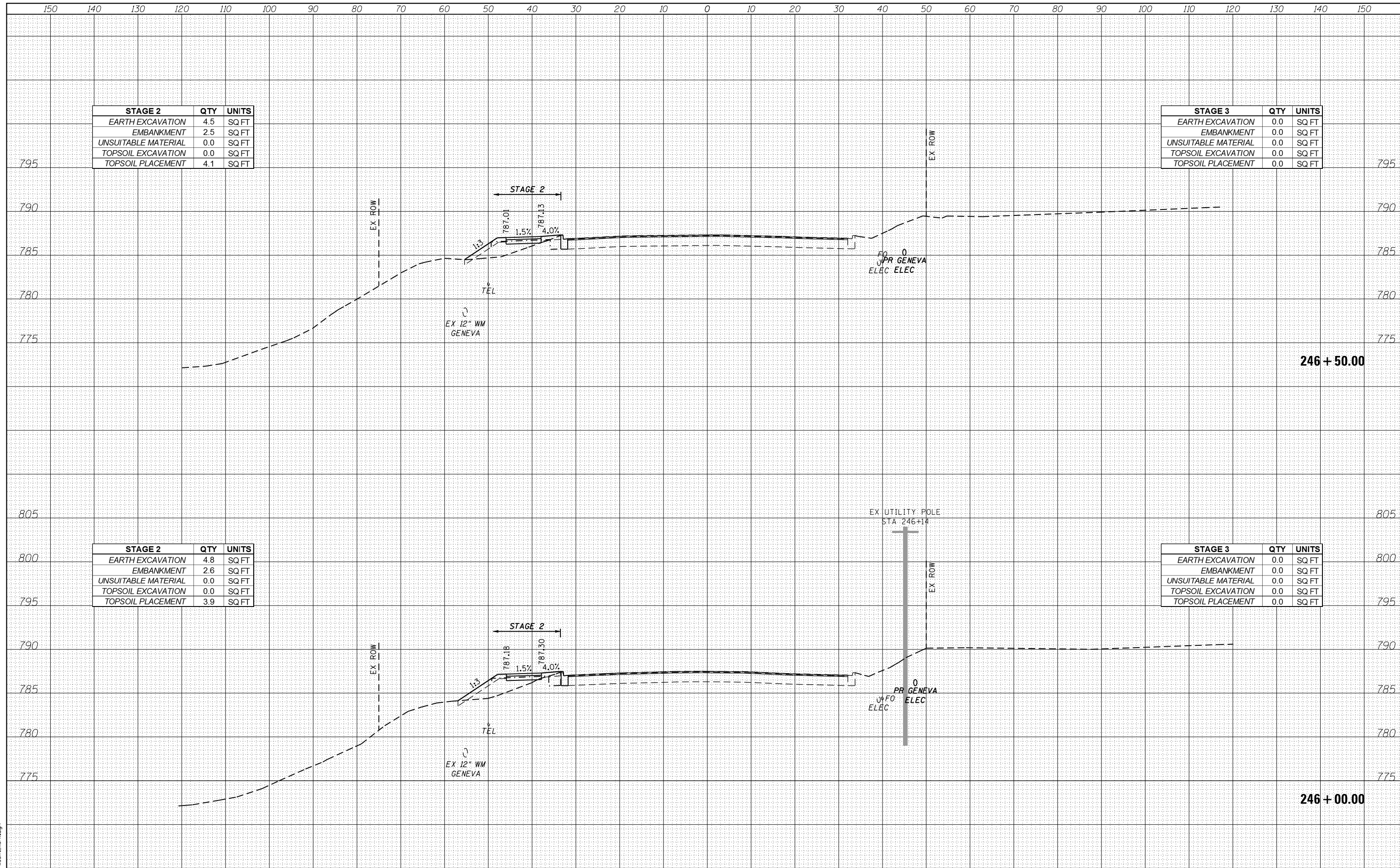
USER NAME = TEG	DESIGNED - VJM	REVISED -
	DRAWN - JBH	REVISED -
PLOT SCALE = 20.0000' / in.	CHECKED - BLP	REVISED -
PLOT DATE = 11/6/2018	DATE - 11/6/2018	REVISED -

**STATE OF ILLINOIS
DEPARTMENT OF TRANSPORTATION**

**CROSS SECTIONS
KIRK ROAD**

SCALE: 1"=10' SHEET 31 OF 35 SHEETS STA. 245+00.00 TO STA. 245+50.00

F.A.P. RTE. 363/360	SECTION 11-00201-04-CH	COUNTY KANE	TOTAL SHEETS 410	SHEET NO. 406
			CONTRACT NO. 61E97	
ILLINOIS FED. AID PROJECT				



STAGE 2	QTY	UNITS
EARTH EXCAVATION	4.5	SQ FT
EMBANKMENT	2.5	SQ FT
UNSUITABLE MATERIAL	0.0	SQ FT
TOPSOIL EXCAVATION	0.0	SQ FT
TOPSOIL PLACEMENT	4.1	SQ FT

STAGE 3	QTY	UNITS
EARTH EXCAVATION	0.0	SQ FT
EMBANKMENT	0.0	SQ FT
UNSUITABLE MATERIAL	0.0	SQ FT
TOPSOIL EXCAVATION	0.0	SQ FT
TOPSOIL PLACEMENT	0.0	SQ FT

STAGE 2	QTY	UNITS
EARTH EXCAVATION	4.8	SQ FT
EMBANKMENT	2.6	SQ FT
UNSUITABLE MATERIAL	0.0	SQ FT
TOPSOIL EXCAVATION	0.0	SQ FT
TOPSOIL PLACEMENT	3.9	SQ FT

STAGE 3	QTY	UNITS
EARTH EXCAVATION	0.0	SQ FT
EMBANKMENT	0.0	SQ FT
UNSUITABLE MATERIAL	0.0	SQ FT
TOPSOIL EXCAVATION	0.0	SQ FT
TOPSOIL PLACEMENT	0.0	SQ FT

FILE NAME = aht-xash_L_Kirk.dgn

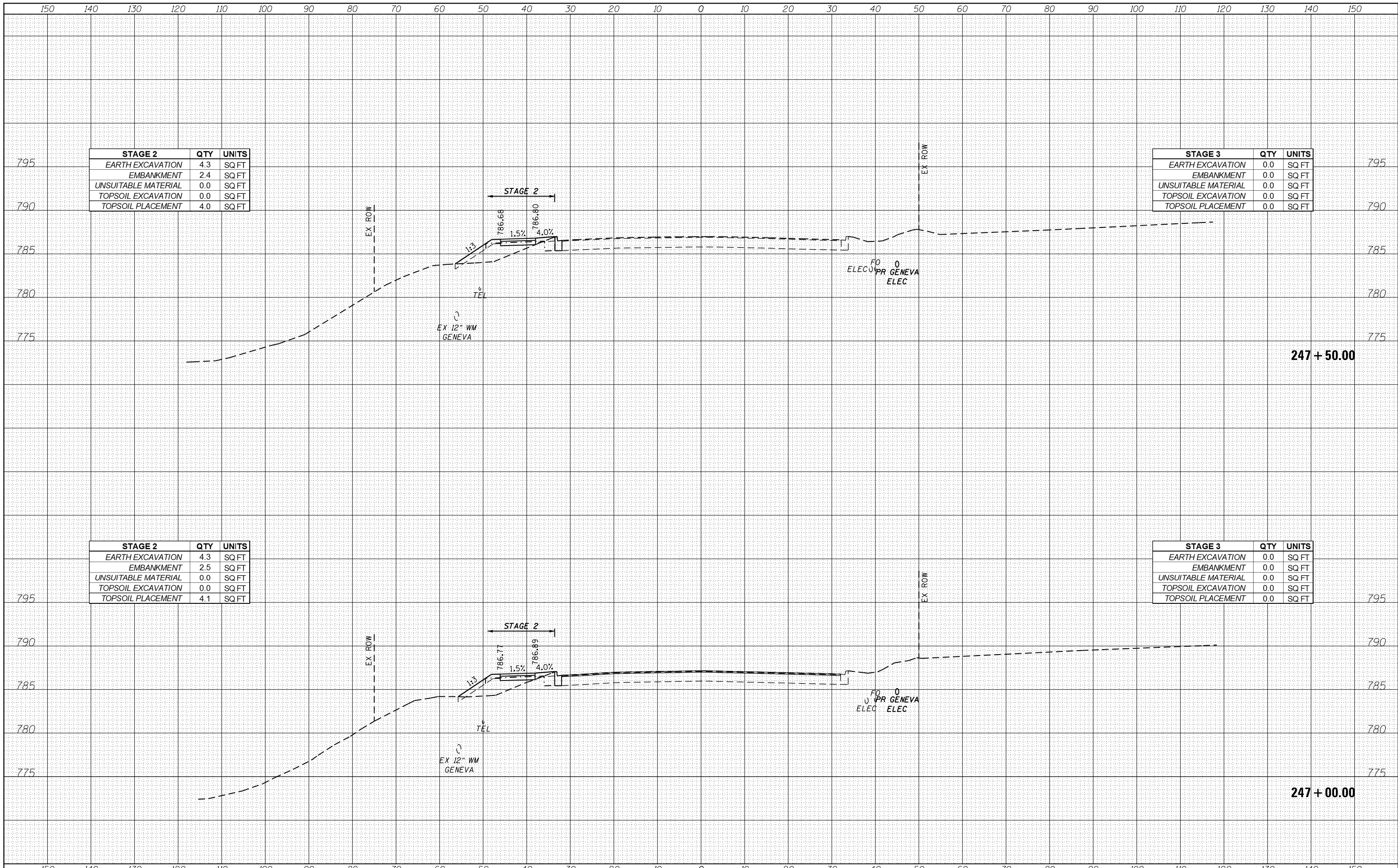


USER NAME = TEG	DESIGNED - VJM	REVISED -
	DRAWN - JBH	REVISED -
PLOT SCALE = 20.0000' / in.	CHECKED - BLP	REVISED -
PLOT DATE = 11/6/2018	DATE - 11/6/2018	REVISED -

STATE OF ILLINOIS
DEPARTMENT OF TRANSPORTATION

CROSS SECTIONS
KIRK ROAD
SCALE: 1"=10'
SHEET 32 OF 35 SHEETS
STA. 246+00.00 TO STA. 246+50.00

F.A.P. RTE. 363/360	SECTION 11-00201-04-CH	COUNTY KANE	TOTAL SHEETS 410	SHEET NO. 407
			CONTRACT NO. 61E97	
ILLINOIS FED. AID PROJECT				



STAGE 2	QTY	UNITS
EARTH EXCAVATION	4.3	SQ FT
EMBANKMENT	2.4	SQ FT
UNSUITABLE MATERIAL	0.0	SQ FT
TOPSOIL EXCAVATION	0.0	SQ FT
TOPSOIL PLACEMENT	4.0	SQ FT

STAGE 3	QTY	UNITS
EARTH EXCAVATION	0.0	SQ FT
EMBANKMENT	0.0	SQ FT
UNSUITABLE MATERIAL	0.0	SQ FT
TOPSOIL EXCAVATION	0.0	SQ FT
TOPSOIL PLACEMENT	0.0	SQ FT

STAGE 2	QTY	UNITS
EARTH EXCAVATION	4.3	SQ FT
EMBANKMENT	2.5	SQ FT
UNSUITABLE MATERIAL	0.0	SQ FT
TOPSOIL EXCAVATION	0.0	SQ FT
TOPSOIL PLACEMENT	4.1	SQ FT

STAGE 3	QTY	UNITS
EARTH EXCAVATION	0.0	SQ FT
EMBANKMENT	0.0	SQ FT
UNSUITABLE MATERIAL	0.0	SQ FT
TOPSOIL EXCAVATION	0.0	SQ FT
TOPSOIL PLACEMENT	0.0	SQ FT

FILE NAME = aht-xash_kirk.dgn



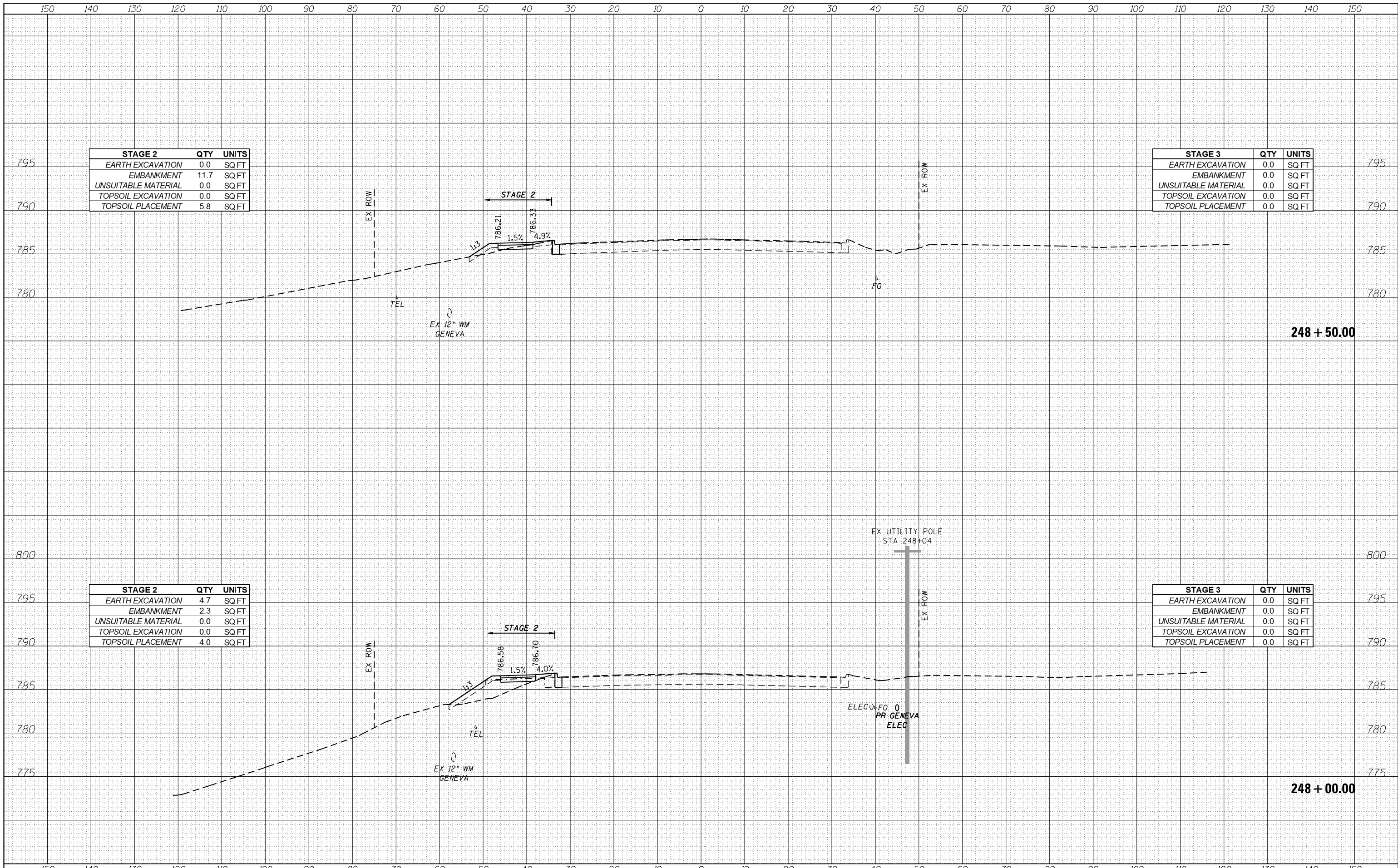
USER NAME - TEG	DESIGNED - VJM	REVISED -
	DRAWN - JBH	REVISED -
PLOT SCALE = 20.0000' / in.	CHECKED - BLP	REVISED -
PLOT DATE = 11/6/2018	DATE - 11/6/2018	REVISED -

STATE OF ILLINOIS
DEPARTMENT OF TRANSPORTATION

CROSS SECTIONS
KIRK ROAD

SCALE: 1"=10' SHEET 33 OF 35 SHEETS STA. 247+00.00 TO STA. 247+50.00

F.A.P. RTE. 363/360	SECTION 11-00201-04-CH	COUNTY KANE	TOTAL SHEETS 410	SHEET NO. 408
CONTRACT NO. 61E97			ILLINOIS FED. AID PROJECT	



STAGE 2	QTY	UNITS
EARTH EXCAVATION	0.0	SQ FT
EMBANKMENT	11.7	SQ FT
UNSUITABLE MATERIAL	0.0	SQ FT
TOPSOIL EXCAVATION	0.0	SQ FT
TOPSOIL PLACEMENT	5.8	SQ FT

STAGE 3	QTY	UNITS
EARTH EXCAVATION	0.0	SQ FT
EMBANKMENT	0.0	SQ FT
UNSUITABLE MATERIAL	0.0	SQ FT
TOPSOIL EXCAVATION	0.0	SQ FT
TOPSOIL PLACEMENT	0.0	SQ FT

STAGE 2	QTY	UNITS
EARTH EXCAVATION	4.7	SQ FT
EMBANKMENT	2.3	SQ FT
UNSUITABLE MATERIAL	0.0	SQ FT
TOPSOIL EXCAVATION	0.0	SQ FT
TOPSOIL PLACEMENT	4.0	SQ FT

STAGE 3	QTY	UNITS
EARTH EXCAVATION	0.0	SQ FT
EMBANKMENT	0.0	SQ FT
UNSUITABLE MATERIAL	0.0	SQ FT
TOPSOIL EXCAVATION	0.0	SQ FT
TOPSOIL PLACEMENT	0.0	SQ FT

FILE NAME = aht-xash_kirk.dgn



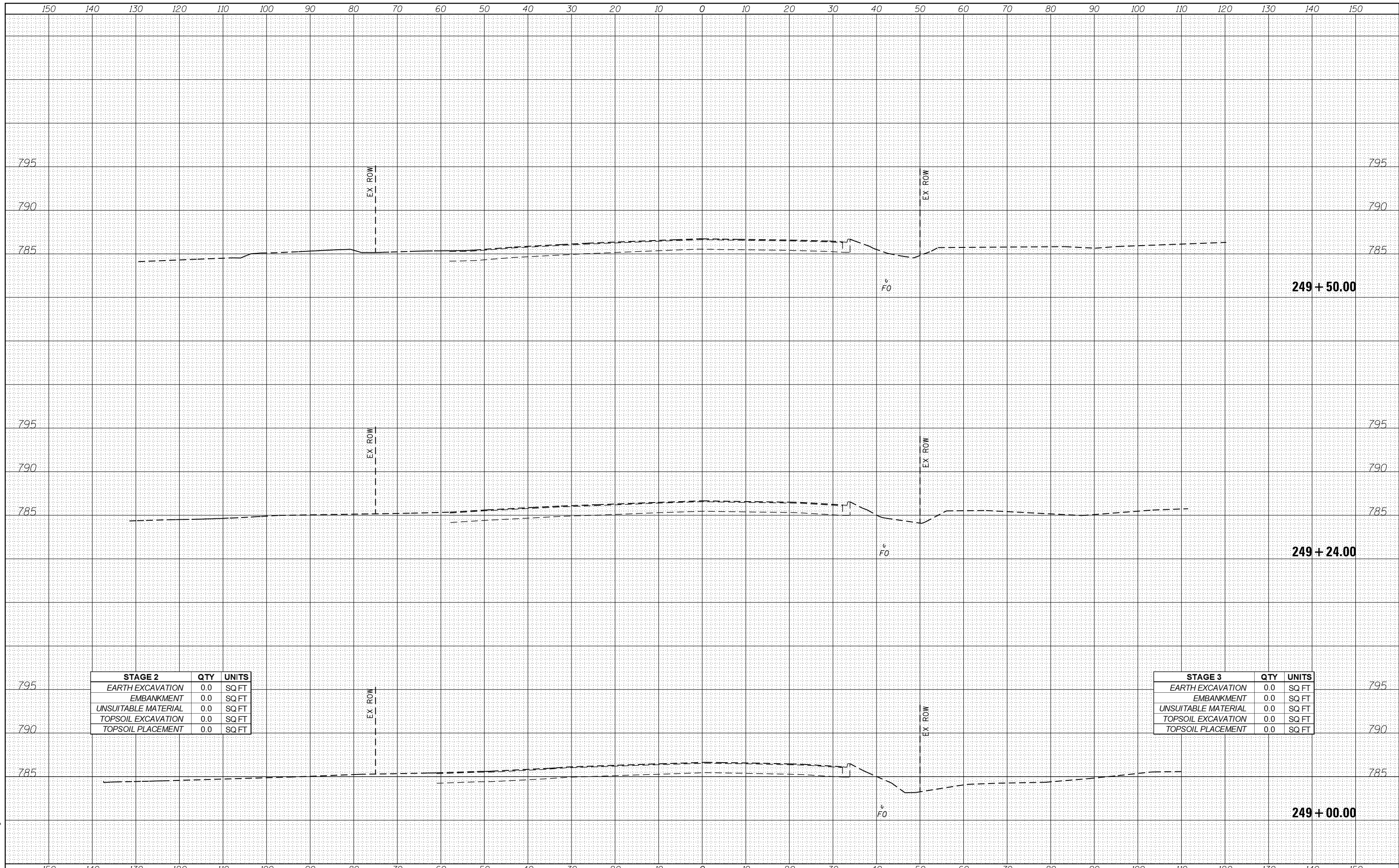
USER NAME = TEG	DESIGNED - VJM	REVISED -
	DRAWN - JBH	REVISED -
PLOT SCALE = 20.0000' / in.	CHECKED - BLP	REVISED -
PLOT DATE = 11/6/2018	DATE - 11/6/2018	REVISED -

**STATE OF ILLINOIS
DEPARTMENT OF TRANSPORTATION**

**CROSS SECTIONS
KIRK ROAD**

SCALE: 1"=10' SHEET 34 OF 35 SHEETS STA. 248+00.00 TO STA. 248+50.00

F.A.P. RTE. 363/360	SECTION 11-00201-04-CH	COUNTY KANE	TOTAL SHEETS 410	SHEET NO. 409
CONTRACT NO. 61E97			ILLINOIS FED. AID PROJECT	



249 + 50.00

249 + 24.00

249 + 00.00

STAGE 2	QTY	UNITS
EARTH EXCAVATION	0.0	SQ FT
EMBANKMENT	0.0	SQ FT
UNSUITABLE MATERIAL	0.0	SQ FT
TOPSOIL EXCAVATION	0.0	SQ FT
TOPSOIL PLACEMENT	0.0	SQ FT

STAGE 3	QTY	UNITS
EARTH EXCAVATION	0.0	SQ FT
EMBANKMENT	0.0	SQ FT
UNSUITABLE MATERIAL	0.0	SQ FT
TOPSOIL EXCAVATION	0.0	SQ FT
TOPSOIL PLACEMENT	0.0	SQ FT

FILE NAME = aht-xash_kirk.dgn



USER NAME = TEG	DESIGNED - VJM	REVISED -
PLOT SCALE = 20.0000' / in.	DRAWN - JBH	REVISED -
PLOT DATE = 11/6/2018	CHECKED - BLP	REVISED -
	DATE - 11/6/2018	REVISED -

**STATE OF ILLINOIS
DEPARTMENT OF TRANSPORTATION**

**CROSS SECTIONS
KIRK ROAD**
SCALE: 1"=10' SHEET 35 OF 35 SHEETS STA. 249+00.00 TO STA. 249+50.00

F.A.P. RTE. 363/360	SECTION 11-00201-04-CH	COUNTY KANE	TOTAL SHEETS 410	SHEET NO. 410
CONTRACT NO. 61E97			ILLINOIS FED. AID PROJECT	