

WHITESIDE COUNTY AIRPORT BOARD WHITESIDE COUNTY, ILLINOIS

Whiteside County AIRPORT
JOSEPH H. BITTORF FIELD

WHITESIDE COUNTY AIRPORT BOARD

APPROVED BY 
DAVE KOSTER, PRESIDENT

DATE NOVEMBER 16, 2018

CONSTRUCTION PLANS FOR WHITESIDE COUNTY AIRPORT REHABILITATE TAXIWAY C & D

SUMMARY OF QUANTITIES				
ITEM	DESCRIPTION	UNIT	QUANTITY	RECORD QUANTITY
AR150520	MOBILIZATION	LS	1	
AR152480	SHOULDER ADJUSTMENT	SY	2,140	
AR152511	SUBGRADE REPAIR	SY	1,031	
AR401610	BITUMINOUS SURFACE COURSE	TON	1,625	
AR401650	BITUMINOUS PAVEMENT MILLING	SY	14,125	
AR401916	REM & REP BIT PAVEMENT - TYPE B	SY	1,031	
AR603510	BITUMINOUS TACK COAT	GAL	2,880	
AR620520	PAVEMENT MARKING - WATERBORNE	SF	2,970	
AR705944	ADJUST UNDERDRAIN CLEANOUT	EA	12	
AR901510	SEEDING	AC	0.5	
AR908525	KNITTED STRAW MAT	SY	2,140	

DESIGN INFORMATION

TOWNSHIP: 20 NORTH COUNTY: WHITESIDE
RANGE: 7 EAST MONTMORENCY TOWNSHIP
SECTION: 10
AIRPLANE DESIGN GROUP III (7/25)
AIRPLANE DESIGN GROUP II (18/36)
(MAXIMUM EQUIPMENT HEIGHT = 25')

ILLINOIS PROJECT: SQI-4689
SBG PROJECT: 3-17-SBGP-144

NOVEMBER 16, 2018

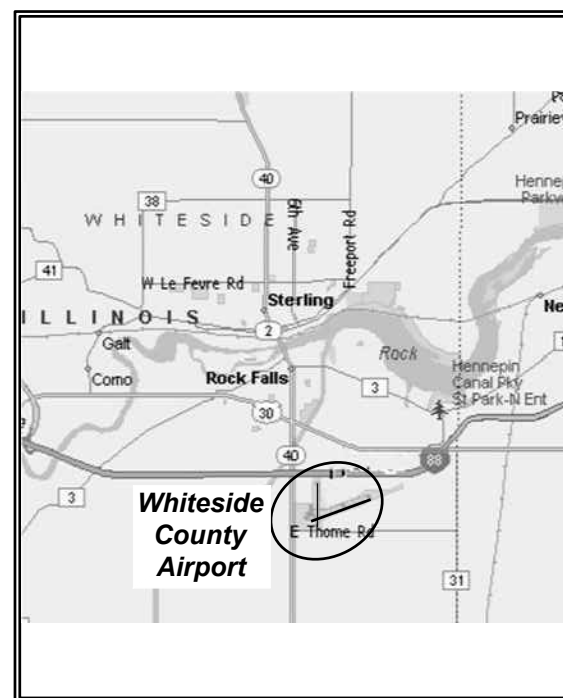


Illinois Professional Engineering Practice Act of 1989



SUBMITTED BY 
DOUGLAS J. KLONOWSKI, PE

DATE NOVEMBER 16, 2018
License Expires 11/30/2019



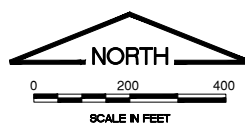
LOCATION MAP



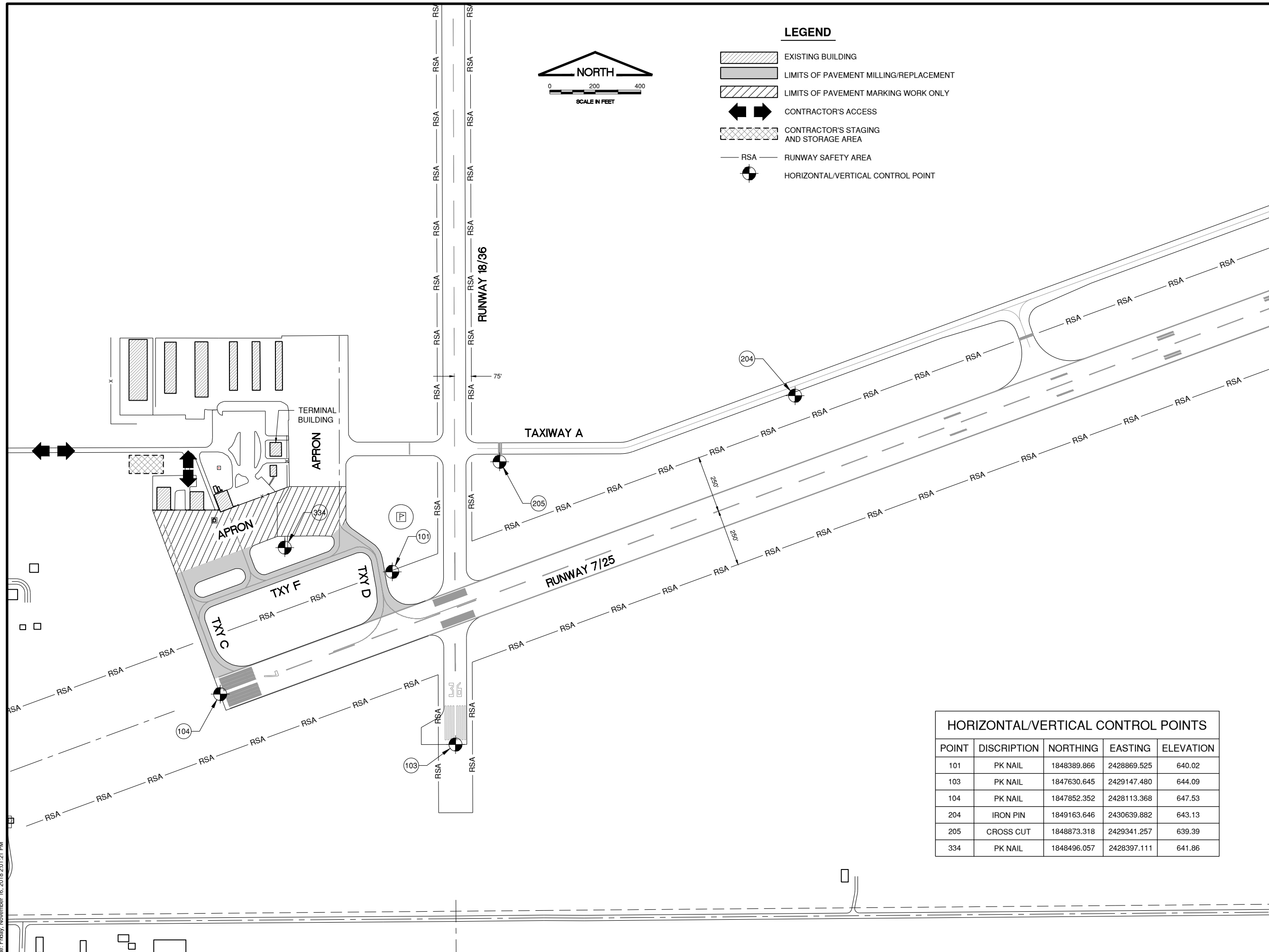
SITE PLAN

INDEX TO SHEETS

- GI101 - COVER SHEET/INDEX TO SHEETS AND QUANTITIES
- GI102 - SITE PLAN AND PROJECT CONTROL
- GC101 - CONSTRUCTION ACTIVITY PLAN INDEX
- GC102 - CONSTRUCTION ACTIVITY PLAN NOTES - SHEET 1
- GC102 - CONSTRUCTION ACTIVITY PLAN NOTES - SHEET 2
- GC104 - CONSTRUCTION ACTIVITY PLAN DETAILS
- GC105 - CONSTRUCTION ACTIVITY PLAN PHASE 1A AND 2A
- GC106 - CONSTRUCTION ACTIVITY PLAN PHASE 1
- GC107 - CONSTRUCTION ACTIVITY PLAN PHASE 2
- GC108 - CONSTRUCTION ACTIVITY PLAN PHASE 3A
- GC109 - CONSTRUCTION ACTIVITY PLAN PHASE 3B
- GC110 - CONSTRUCTION ACTIVITY PLAN - RUNWAY CLOSURE
- CD101 - EXISTING CONDITIONS
- CP101 - PROPOSED IMPROVEMENTS
- CS101 - STAKING PLAN - SHEET 1
- CS102 - STAKING PLAN - SHEET 2
- CP201 - TAXIWAY C AND APRON CONNECTOR PLAN AND PROFILE
- CP202 - TAXIWAY D PLAN AND PROFILE
- CP203 - TAXIWAY F PLAN AND PROFILE
- CJ501 - PAVING, MARKING AND MISCELLANEOUS DETAILS
- LG101 - LANDSCAPING PLAN



- LEGEND**
- EXISTING BUILDING
 - LIMITS OF PAVEMENT MILLING/REPLACEMENT
 - LIMITS OF PAVEMENT MARKING WORK ONLY
 - CONTRACTOR'S ACCESS
 - CONTRACTOR'S STAGING AND STORAGE AREA
 - RUNWAY SAFETY AREA
 - HORIZONTAL/VERTICAL CONTROL POINT



HORIZONTAL/VERTICAL CONTROL POINTS				
POINT	DISCRIPTION	NORTHING	EASTING	ELEVATION
101	PK NAIL	1848389.866	2428869.525	640.02
103	PK NAIL	1847630.645	2429147.480	644.09
104	PK NAIL	1847852.352	2428113.368	647.53
204	IRON PIN	1849163.646	2430639.882	643.13
205	CROSS CUT	1848873.318	2429341.257	639.39
334	PK NAIL	1848496.057	2428397.111	641.86

100% SUBMITTAL
NOVEMBER 16TH, 2018

REHABILITATE TAXIWAY
C, D AND F



Whiteside County **AIRPORT**
JOSEPH H. BITTORF FIELD

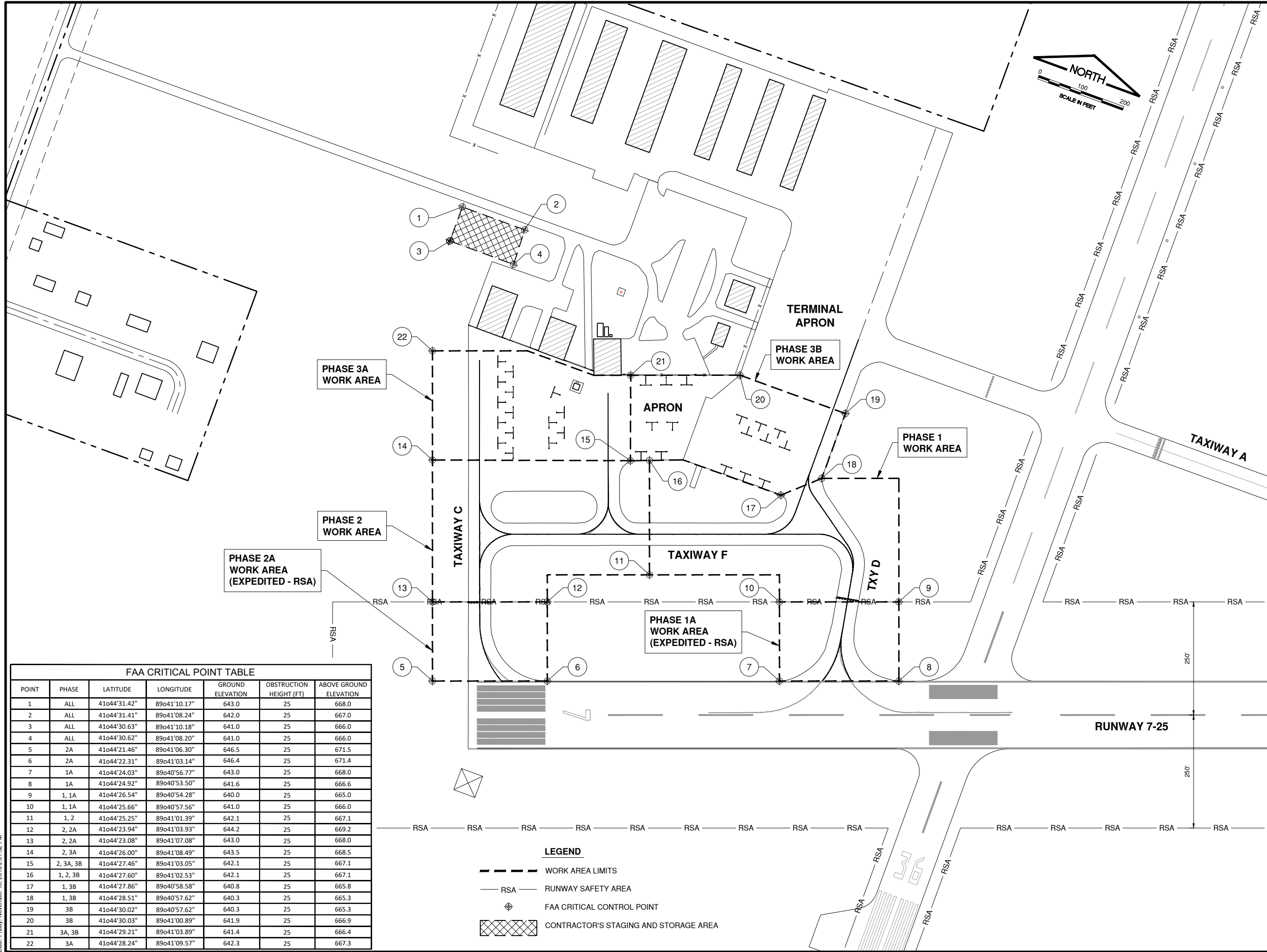
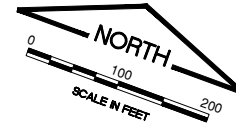
WHITESIDE COUNTY AIRPORT
AUTHORITY
STERLING - ROCK FALLS, IL

MARK	DATE	DESCRIPTION

SBG PROJ. NO: 3-17-SBGP-144
IL PROJ. NO: SQI-4689
CMT PROJECT NO: 18292-02-00
CAD DWG FILE: 1829202-G1102.DWG
DESIGNED BY: NRF
DRAWN BY: JRO
CHECKED BY: CMT-ARR
APPROVED BY: DJK
COPYRIGHT:

SHEET TITLE
SITE PLAN & PROJECT CONTROL

Path: K:\whiteside\18292-02_rehab\by\caredi\Draw\Sheets\1829202-G1102.dwg
Date: Friday, November 16, 2018 2:01:21 PM



100% SUBMITTAL
NOVEMBER 16TH, 2018

REHABILITATE TAXIWAY C, D AND F



Whiteside County AIRPORT
JOSEPH H. BITTORF FIELD

WHITESIDE COUNTY AIRPORT
AUTHORITY
STERLING - ROCK FALLS, IL

FAA CRITICAL POINT TABLE						
POINT	PHASE	LATITUDE	LONGITUDE	GROUND ELEVATION	OBSTRUCTION HEIGHT (FT)	ABOVE GROUND ELEVATION
1	ALL	41o44'31.42"	89o41'10.17"	643.0	25	668.0
2	ALL	41o44'31.41"	89o41'08.24"	642.0	25	667.0
3	ALL	41o44'30.63"	89o41'10.18"	641.0	25	666.0
4	ALL	41o44'30.62"	89o41'08.20"	641.0	25	666.0
5	2A	41o44'21.46"	89o41'06.30"	646.5	25	671.5
6	2A	41o44'22.31"	89o41'03.14"	646.4	25	671.4
7	1A	41o44'24.03"	89o40'56.77"	643.0	25	668.0
8	1A	41o44'24.92"	89o40'53.50"	641.6	25	666.6
9	1, 1A	41o44'26.54"	89o40'54.28"	640.0	25	665.0
10	1, 1A	41o44'25.66"	89o40'57.56"	641.0	25	666.0
11	1, 2	41o44'25.25"	89o41'01.39"	642.1	25	667.1
12	2, 2A	41o44'23.94"	89o41'03.93"	644.2	25	669.2
13	2, 2A	41o44'23.08"	89o41'07.08"	643.0	25	668.0
14	2, 3A	41o44'26.00"	89o41'08.49"	643.5	25	668.5
15	2, 3A, 3B	41o44'27.46"	89o41'03.05"	642.1	25	667.1
16	1, 2, 3B	41o44'27.60"	89o41'02.53"	642.1	25	667.1
17	1, 3B	41o44'27.86"	89o40'58.58"	640.8	25	665.8
18	1, 3B	41o44'28.51"	89o40'57.62"	640.3	25	665.3
19	3B	41o44'30.02"	89o40'57.62"	640.3	25	665.3
20	3B	41o44'30.03"	89o41'00.89"	641.9	25	666.9
21	3A, 3B	41o44'29.21"	89o41'03.89"	641.4	25	666.4
22	3A	41o44'28.24"	89o41'09.57"	642.3	25	667.3

LEGEND

- WORK AREA LIMITS
- RSA RUNWAY SAFETY AREA
- ⊕ FAA CRITICAL CONTROL POINT
- CONTRACTOR'S STAGING AND STORAGE AREA

MARK	DATE	DESCRIPTION

SBG PROJ. NO: 3-17-SBGP-144
 IL PROJ. NO: SGI-4689
 CMT PROJECT NO: 18292-02-00
 CAD DWG FILE: 1829202-GC101.DWG
 DESIGNED BY: NRF
 DRAWN BY: JRO
 CHECKED BY: CMT-ARR
 APPROVED BY: DJK
 COPYRIGHT:

SHEET TITLE
**CONSTRUCTION
 ACTIVITY PLAN INDEX**

GC101

SHEET **3** OF **21**

Path: K:\whiteside\18292-02_rehab\byc\cadd\Draw\Sheets\1829202-GC101.dwg
Date: Friday, November 16, 2018 2:01:32 PM

GENERAL

- 1. THE CONTRACTOR AND ALL SUBCONTRACTORS SHALL FOLLOW THE REQUIREMENTS OF THE AIRPORT'S APPROVED CONSTRUCTION SAFETY AND PHASING PLAN (CSPP)...

PHASE 3B WORK AREA

THE PHASE 3B WORK AREA GENERALLY INCLUDES PAVEMENT MARKING IMPROVEMENTS, WHICH REQUIRE THE TEMPORARY RELOCATION OF AIRCRAFT (BY OTHERS), ON THE EAST SIDE OF THE APRON.

4. RESTRICTIONS

GENERAL (ALL WORK AREAS)

ALL WORK AREAS WITHIN AN RSA OR TOFA MUST BE RESTORED AND INSPECTED TO MEET FAA CRITERIA AND PER THE CONTRACTOR'S CONSTRUCTION SAFETY PHASING PLAN (CSPP)...

WORK CONDUCTED UTILIZING EXTENDED CLOSURES AS INDICATED IN THE PLANS WILL ALLOW THE CONTRACTOR TO CONDUCT WORK 24 HOURS A DAY, 7 DAYS A WEEK.

SIMULTANEOUS CLOSURES OF AIRFIELD PAVEMENTS TO COMPLETE WORK IN MORE THAN ONE WORK AREA AT A TIME WILL NOT BE ALLOWED EXCEPT AS SPECIFICALLY NOTED.

THE PHASING HAS BEEN STRUCTURED TO BE COMPLETED IN CONSECUTIVE ORDER AS NOTED ON THE PLANS, BEGINNING WITH WORK AREA 1A AND ENDING WITH WORK AREA 3B.

PHASE 1A WORK AREA (RUNWAY 7/25 RSA)

SINGLE DAYTIME CLOSURES OF RUNWAY 7-25 ARE REQUIRED TO COMPLETE THE WORK WITHIN THE RUNWAY SAFETY AREA (RSA).

THE CONTRACTOR MUST PROVIDE THE AIRPORT A 48-HOUR NOTICE TO THE AIRPORT TO REQUEST A RUNWAY CLOSURE FOR APPROVAL.

WORK WITHIN THE PHASE 1A WORK AREA CAN BE COMPLETED CONCURRENTLY WITH THE PHASE 2A WORK AREA.

PHASE 2A WORK AREA (runway 7/25 rsa)

SINGLE DAYTIME CLOSURES OF RUNWAY 7-25 ARE REQUIRED TO COMPLETE THE WORK WITHIN THE RUNWAY SAFETY AREA (RSA).

THE CONTRACTOR MUST PROVIDE THE AIRPORT A 48-HOUR NOTICE TO THE AIRPORT TO REQUEST A RUNWAY CLOSURE FOR APPROVAL.

WORK WITHIN THE PHASE 2A WORK AREA CAN BE COMPLETED CONCURRENTLY WITH THE PHASE 1A WORK AREA.

PHASE 1 WORK AREA

CLOSURES OF TAXIWAY D (BETWEEN THE RUNWAY 7-25 RSA AND THE APRON) AND TAXIWAY F (EAST OF THE APRON TAXIWAY) ARE REQUIRED TO COMPLETE THE WORK WITHIN THE TOFA OF TAXIWAY D AND TAXIWAY F.

WORK WITHIN THE PHASE 1 WORK AREA CAN NOT BE COMPLETED CONCURRENTLY WITH THE PHASE 2 WORK AREA.

PHASE 2 WORK AREA

CLOSURES OF TAXIWAY C (BETWEEN THE RUNWAY 7-25 RSA AND THE APRON) AND TAXIWAY F (WEST OF TAXIWAY D) ARE REQUIRED TO COMPLETE THE WORK WITHIN THE TOFA OF TAXIWAY C AND TAXIWAY F.

WORK WITHIN THE PHASE 2 WORK AREA CAN NOT BE COMPLETED CONCURRENTLY WITH THE PHASE 1 WORK AREA.

PHASE 3A WORK AREA

CLOSURES OF TAXIWAY C (NORTH OF TAXIWAY F), THE APRON TAXIWAY (NORTH OF TAXIWAY F), AND THE WEST SIDE OF THE APRON ARE REQUIRED TO COMPLETE THE WORK IN THIS AREA.

WORK WITHIN THE PHASE 3A WORK AREA CAN BE COMPLETED CONCURRENTLY WITH THE PHASE 2, PHASE 1A AND PHASE 2A WORK AREAS.

COORDINATION WITH THE AIRPORT IS REQUIRED TO ENSURE THAT ANY AIRCRAFT UTILIZING A TIE-DOWN AREA WITHIN THE PHASE 3A WORK AREA ON THE APRON IS TEMPORARILY RELOCATED (BY OTHERS) TO COMPLETE THE WORK.

PHASE 3B WORK AREA

CLOSURES OF TAXIWAY D (NORTH OF TAXIWAY F) AND THE EAST SIDE OF THE APRON ARE REQUIRED TO COMPLETE THE WORK IN THIS AREA.

WORK WITHIN THE PHASE 3B WORK AREA CAN BE COMPLETED CONCURRENTLY WITH THE PHASE 1, PHASE 1A AND PHASE 2A WORK AREAS.

COORDINATION WITH THE AIRPORT IS REQUIRED TO ENSURE THAT ANY AIRCRAFT UTILIZING A TIE-DOWN AREA WITHIN THE PHASE 3B WORK AREA ON THE APRON IS TEMPORARILY RELOCATED (BY OTHERS) TO COMPLETE THE WORK.

3. AREAS AND OPERATIONS AFFECTED BY THE CONSTRUCTION ACTIVITY

- 1. ALL RUNWAYS, TAXIWAYS AND APRONS SHALL BE KEPT OPEN TO AIRCRAFT TRAFFIC DURING CONSTRUCTION EXCEPT AS NOTED ON THE PHASING PLAN.

5. CONTRACTOR ACCESS

- 1. CONTRACTOR ACCESS SHALL BE AS NOTED BELOW AND AS SHOWN ON THE SITE PLAN AND CONSTRUCTION ACTIVITY PLAN SHEETS.

- 12. ALL CONSTRUCTION TRAFFIC OPERATING ON, OR CROSSING RUNWAYS, TAXIWAYS AND APRONS OPEN TO AIRCRAFT TRAFFIC SHALL BE UNDER CONTROL BY A FLAGMAN OR ESCORT IN RADIO CONTACT WITH THE COMMON TRAFFIC ADVISORY FREQUENCY.

6. WILDLIFE MANAGEMENT

- 1. THE CONTRACTOR SHALL NOTIFY THE AIRPORT OR THE RESIDENT ENGINEER IF ANY WILDLIFE IS SEEN ENTERING THE AIRPORT.

7. NOTIFICATION OF CONSTRUCTION ACTIVITIES

- 1. THE CONTRACTOR SHALL PROVIDE A 24 HOUR EMERGENCY CONTACT PERSON AND PHONE NUMBER.

8. INSPECTION REQUIREMENTS

- 1. THE CONTRACTOR SHALL INSPECT THE JOBSITE DAILY TO ENSURE COMPLIANCE WITH THE CSPP.

9. UNDERGROUND UTILITIES

- 1. IT WILL BE NECESSARY FOR THE CONTRACTOR TO MAKE HIS OWN FIELD INVESTIGATION TO DETERMINE THE EXACT LOCATION OF THE UNDERGROUND UTILITIES AT CRITICAL POINTS.

NOT IN CONTRACT

1. COORDINATION

- 1. PRIOR TO THE START OF CONSTRUCTION THE CONTRACTOR SHALL ATTEND A PRE-CONSTRUCTION CONFERENCE WITH THE AIRPORT, RESIDENT ENGINEER, AND ILLINOIS DIVISION OF AERONAUTICS (IDA).

2. PHASING

- 1. TOTAL CONTRACT TIME SHALL BE 38 CALENDAR DAYS.

PHASE 1A WORK AREA (RUNWAY 7/25 RSA)

THE PHASE 1A WORK AREA GENERALLY INCLUDES MILLING OF EXISTING BITUMINOUS PAVEMENT, PAVEMENT/SUBGRADE REPAIRS, BITUMINOUS PAVING, UNDERDRAIN CLEANOUT ADJUSTMENTS, SHOULDER ADJUSTMENTS AND LANDSCAPING ON TAXIWAY D WITHIN THE RUNWAY 7/25 RSA.

PHASE 2A WORK AREA (RUNWAY 7/25 RSA)

THE PHASE 2A WORK AREA GENERALLY INCLUDES MILLING OF EXISTING BITUMINOUS PAVEMENT, PAVEMENT/SUBGRADE REPAIRS, BITUMINOUS PAVING, UNDERDRAIN CLEANOUT ADJUSTMENTS, SHOULDER ADJUSTMENTS AND LANDSCAPING ON TAXIWAY C WITHIN THE RUNWAY 7/25 RSA.

PHASE 1 WORK AREA

THE PHASE 1 WORK AREA GENERALLY INCLUDES MILLING OF EXISTING BITUMINOUS PAVEMENT, PAVEMENT/SUBGRADE REPAIRS, BITUMINOUS PAVING, UNDERDRAIN CLEANOUT ADJUSTMENTS, SHOULDER ADJUSTMENTS AND LANDSCAPING WITHIN THE TOFA OF TAXIWAY F (EAST OF THE APRON TAXIWAY) AND TAXIWAY D (BETWEEN THE APRON AND THE RUNWAY 7/25 RSA).

PHASE 2 WORK AREA

THE PHASE 2 WORK AREA GENERALLY INCLUDES MILLING OF EXISTING BITUMINOUS PAVEMENT, PAVEMENT/SUBGRADE REPAIRS, BITUMINOUS PAVING, UNDERDRAIN CLEANOUT ADJUSTMENTS, SHOULDER ADJUSTMENTS AND LANDSCAPING WITHIN THE TOFA OF TAXIWAY F (WEST OF TAXIWAY D) AND TAXIWAY C (BETWEEN THE APRON AND THE RUNWAY 7/25 RSA).

PHASE 3A WORK AREA

THE PHASE 3A WORK AREA GENERALLY INCLUDES PAVEMENT MARKING IMPROVEMENTS, WHICH REQUIRE THE TEMPORARY RELOCATION OF AIRCRAFT (BY OTHERS), ON THE WEST SIDE OF THE APRON.



100% SUBMITTAL NOVEMBER 16TH, 2018

REHABILITATE TAXIWAY C, D AND F



OWNER

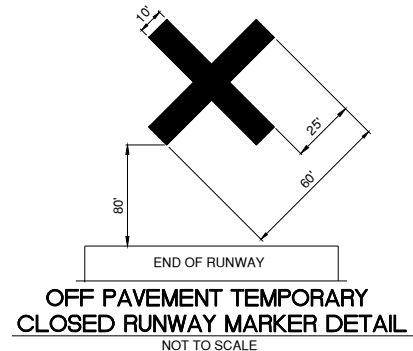
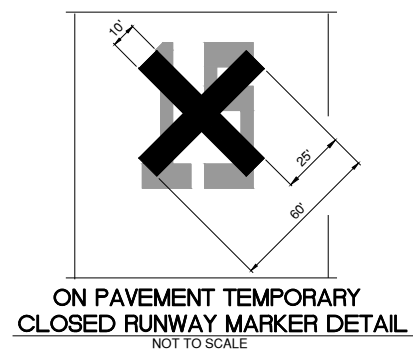
Whiteside County AIRPORT JOSEPH H. BITTORF FIELD

WHITESIDE COUNTY AIRPORT AUTHORITY STERLING - ROCK FALLS, IL

MARK | DATE | DESCRIPTION

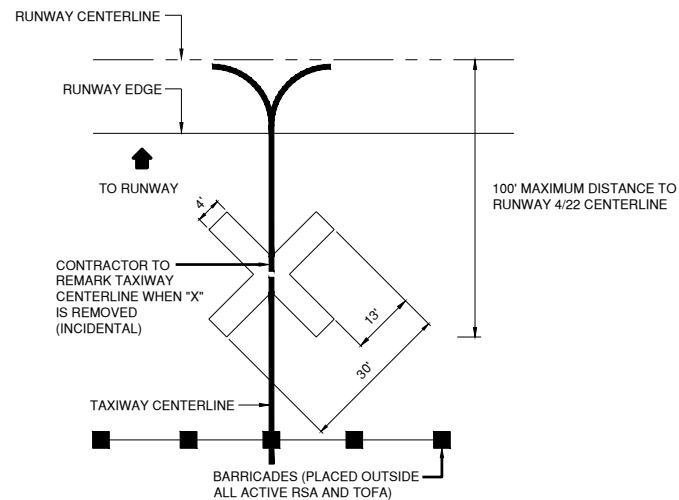
Table with project details: SBG PROJ. NO: 3-17-SBGP-144, IL PROJ. NO. SOI-4689, CMT PROJECT NO: 18292-02-00, CAD DWG FILE: 1829202-GC502.DWG, DESIGNED BY: NRF, DRAWN BY: JRO, CHECKED BY: CMT-ARR, APPROVED BY: DJK, COPYRIGHT:

SHEET TITLE CONSTRUCTION ACTIVITY PLAN NOTES - SHEET 1



CLOSED RUNWAY MARKER DETAIL NOTES

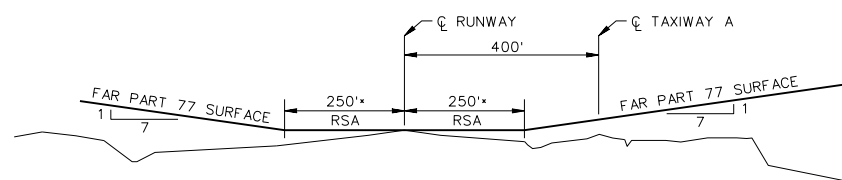
1. CLOSED RUNWAY MARKERS SHALL BE YELLOW.
2. MARKERS SHALL BE MATERIAL APPROVED BY THE ENGINEER.
3. CONTRACTOR SHALL MAINTAIN AND RELOCATE MARKERS AS SHOWN ON THE PLANS OR AS NEEDED TO FACILITATE CONSTRUCTION
4. MARKERS ON PAVEMENT SHALL BE PLACED OVER EXISTING RUNWAY NUMERALS AS SHOWN.
5. COST OF FURNISHING, INSTALLING, MAINTAINING AND REMOVING MARKERS SHALL BE CONSIDERED INCIDENTAL TO THE CONTRACT.
6. DURING VARIOUS PHASES OF WORK, IT WILL BE NECESSARY TO CLOSE RUNWAYS TO AIR TRAFFIC ON A TEMPORARY BASIS AS COORDINATED WITH THE AIRPORT AND TOWER PERSONNEL. THE CONTRACTOR SHALL MARK THE RUNWAYS TO BE CLOSED BY PLACING A YELLOW CROSS AT THE LOCATION AND DIMENSIONS DETAILED ON THIS SHEET. THE CROSSES ARE SHOWN ON THE RESPECTIVE RUNWAYS ACCORDING TO THE VARIOUS PHASES OF WORK AS DELINEATED IN THE SUGGESTED CONSTRUCTION ACTIVITY PLANS.



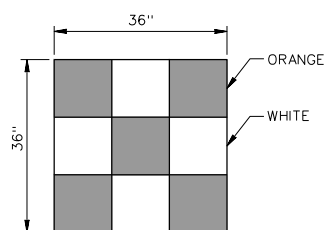
CLOSED TAXIWAY MARKER DETAIL NOTES

CLOSED TAXIWAY MARKER DETAIL NOTES

1. CLOSED TAXIWAY MARKERS SHALL BE PAINTED YELLOW WITH TEMPORARY MARKING CAPABLE OF BEING REMOVED WITH LOW PRESSURE WATER BLASTING OR OTHER MATERIAL THAT DOES NOT VIOLATE THE OBJECT FREE AREA CRITERIA AND RUNWAY SAFETY AREA CRITERIA PER ADVISORY CIRCULAR 150/5300-13A (LATEST EDITION) AND ARE APPROVED BY THE RESIDENT ENGINEER AND AIRPORT.
2. CONTRACTOR SHALL MAINTAIN AND RELOCATE MARKERS AS SHOWN ON THE PLANS OR AS NEEDED TO FACILITATE CONSTRUCTION
3. COST OF FURNISHING, INSTALLING, MAINTAINING AND REMOVING MARKERS SHALL BE CONSIDERED INCIDENTAL TO THE CONTRACT.
4. PLACE MARKERS OVER TAXIWAY CENTERLINE.
5. MARKERS SHALL BE ADEQUATELY SECURED TO PREVENT MOVEMENT BY PROPELLER WASH, JET BLAST OR OTHER WIND CURRENTS.
6. MARKERS ARE ONLY REQUIRED FOR CLOSURES EXCEEDING 72 HOURS.



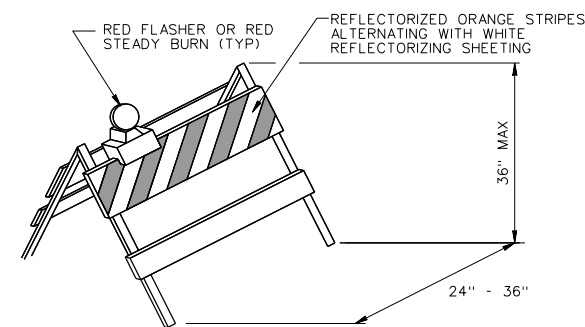
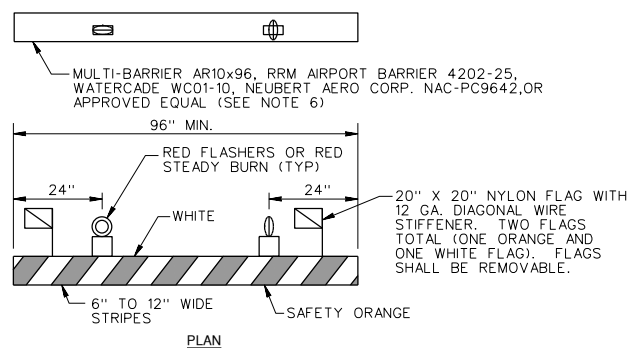
F.A.R. TITLE 14 PART 77 SURFACE
NOT TO SCALE
NOTE: RSA - RUNWAY SAFETY AREA
*75' FEET FOR RUNWAY 18/36



CONSTRUCTION EQUIPMENT AND TRUCK SIGNAL FLAG
NOT TO SCALE

BARRICADE NOTES

1. FLASHER OR STEADY BURN LIGHTS SHALL BE BATTERY OR SOLAR POWER OPERATED. LENS SHALL BE RED AND BE ABLE TO ROTATE 90°.
2. FACING OF BARRICADE SHALL BE COVERED WITH REFLECTIVE TAPE OR PAINT.
3. BARRICADES TO BE PLACED WITH A MAXIMUM OF 20' SPACING CENTER TO CENTER ALONG OPERATIONAL PAVEMENT ADJACENT TO CONSTRUCTION AS DIRECTED BY THE RESIDENT ENGINEER. ALTERNATE FLASHER OR STEADY BURN LENSES SO THAT EVERY OTHER LENS IS ROTATED 90°.
4. FLASHER OR STEADY BURN LIGHTS SHALL BE SECURED TO THE BARRICADES, AS APPROVED BY THE RESIDENT ENGINEER.
5. BARRICADES SHALL BE OF LOW MASS, EASILY COLLAPSIBLE UPON CONTACT WITH AN AIRCRAFT OR ANY OF IT COMPONENTS, AND WEIGHTED TO AVOID BEING BLOWN OVER.
6. BARRICADES SHALL BE OF A COMMERCIAL DESIGN AND SHALL MEET CURRENT FAA REQUIREMENTS.



NOTE:

1. ALL BARRICADES SHALL BE LOW PROFILE UNLESS OTHERWISE SPECIFIED ON THE CONSTRUCTION ACTIVITY PLAN SHEETS.
2. BARRICADES SHALL BE PLACED AS SHOWN ON THE CONSTRUCTION ACTIVITY PLANS 15' ON CENTER AT DESIGNATED LOCATIONS. BARRICADE SHALL BE WEIGHTED WITH A MINIMUM OF 6 SAND BAGS TO PREVENT THEM FROM BEING BLOWN OVER.

100% SUBMITTAL
NOVEMBER 16TH, 2018

REHABILITATE TAXIWAY
C, D AND F



Whiteside County AIRPORT
JOSEPH H. BITTORF FIELD

WHITESIDE COUNTY AIRPORT
AUTHORITY
STERLING - ROCK FALLS, IL

MARK	DATE	DESCRIPTION

SBG PROJ. NO: 3-17-SBGP-144

IL PROJ. NO: SGI-4689

CMT PROJECT NO: 18292-02-00

CAD DWG FILE: 1829202-GC501.DWG

DESIGNED BY: NRF

DRAWN BY: JRO

CHECKED BY: CMT-ARR

APPROVED BY: DJK

COPYRIGHT:

SHEET TITLE

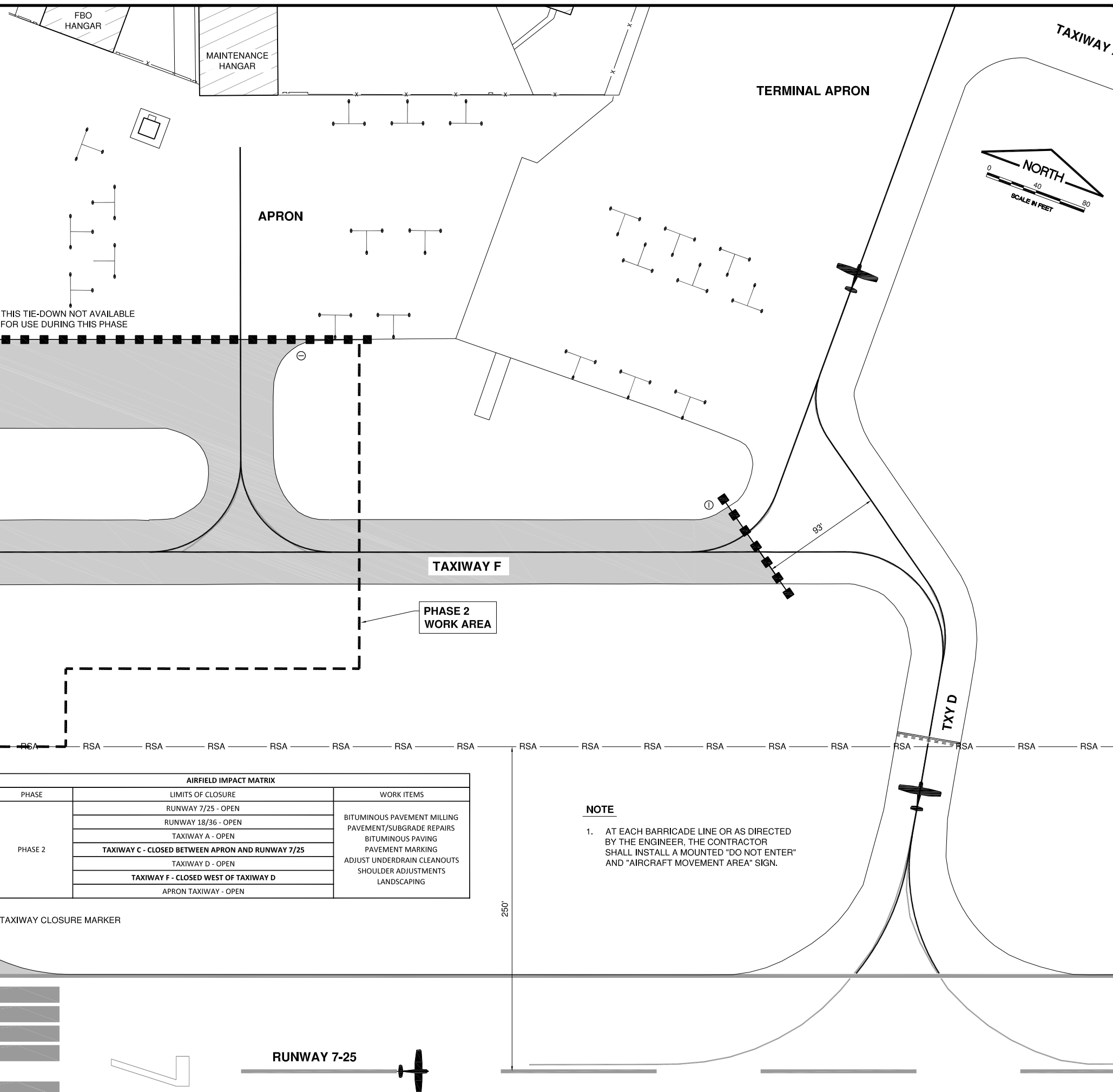
**CONSTRUCTION
ACTIVITY PLAN
DETAILS**

GC104

SHEET 6 OF 21

LEGEND

- WORK AREA LIMITS
- RSA RUNWAY SAFETY AREA
- PAVEMENT CLOSED TO AIRCRAFT
- LOW PROFILE BARRICADES
- TEMPORARY "DO NOT ENTER" SIGN (SEE NOTE 1)
- AIRCRAFT MOVEMENT AREA
- TAXIWAY CLOSURE MARKER
- RUNWAY CLOSURE MARKER



SEE NOTE 1 (TYPICAL)

THIS TIE-DOWN NOT AVAILABLE FOR USE DURING THIS PHASE

PHASE 2 WORK AREA

AIRFIELD IMPACT MATRIX		
PHASE	LIMITS OF CLOSURE	WORK ITEMS
PHASE 2	RUNWAY 7/25 - OPEN	BITUMINOUS PAVEMENT MILLING PAVEMENT/SUBGRADE REPAIRS BITUMINOUS PAVING PAVEMENT MARKING ADJUST UNDERDRAIN CLEANOUTS SHOULDER ADJUSTMENTS LANDSCAPING
	RUNWAY 18/36 - OPEN	
	TAXIWAY A - OPEN	
	TAXIWAY C - CLOSED BETWEEN APRON AND RUNWAY 7/25	
	TAXIWAY D - OPEN	
	TAXIWAY F - CLOSED WEST OF TAXIWAY D	
	APRON TAXIWAY - OPEN	

NOTE

- AT EACH BARRICADE LINE OR AS DIRECTED BY THE ENGINEER, THE CONTRACTOR SHALL INSTALL A MOUNTED "DO NOT ENTER" AND "AIRCRAFT MOVEMENT AREA" SIGN.

100% SUBMITTAL
NOVEMBER 16TH, 2018

REHABILITATE TAXIWAY
C, D AND F



Whiteside County **AIRPORT**
JOSEPH H. BITTORF FIELD

WHITESIDE COUNTY AIRPORT
AUTHORITY
STERLING - ROCK FALLS, IL

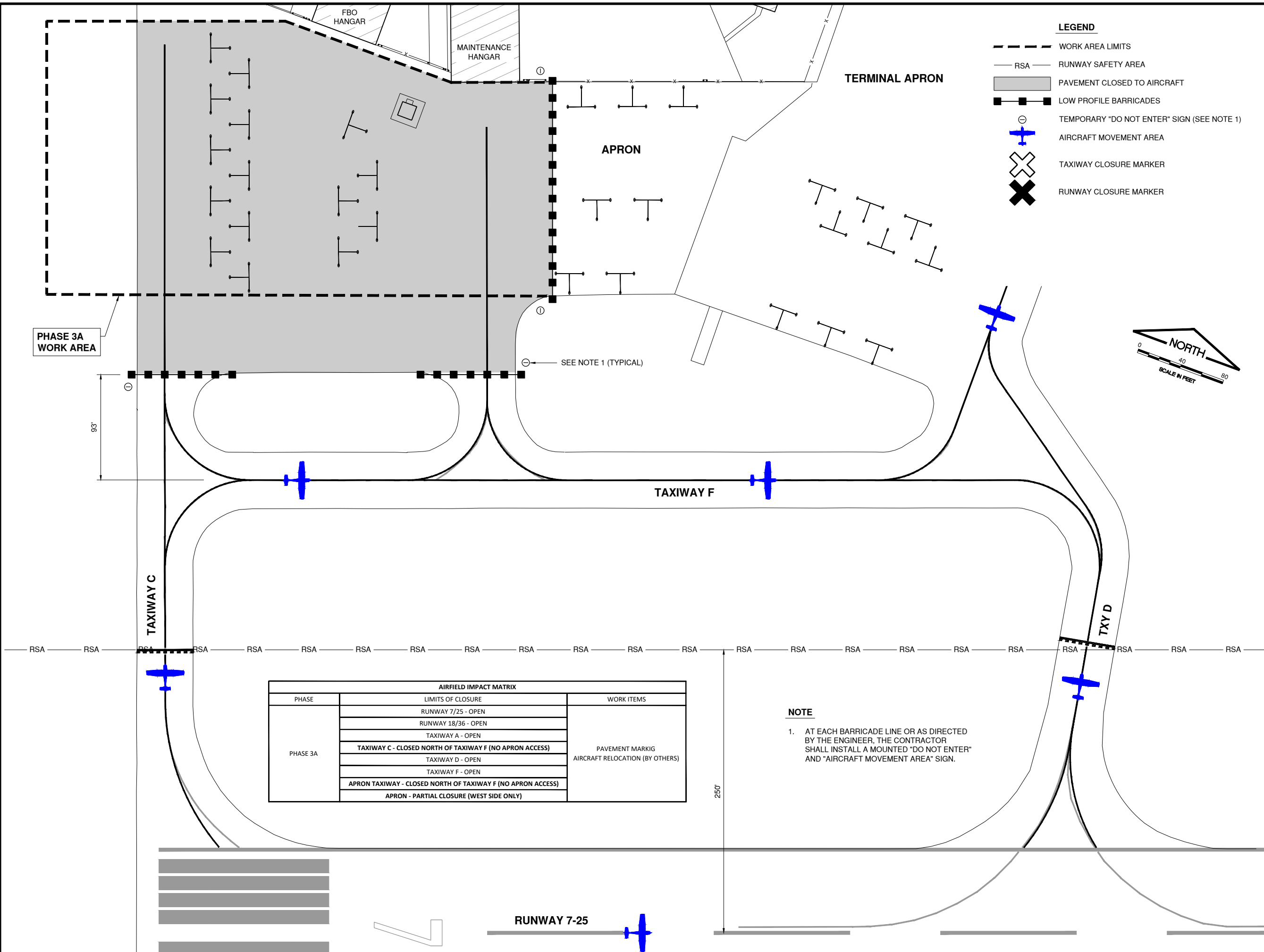
MARK	DATE	DESCRIPTION

SHEET TITLE
**CONSTRUCTION
ACTIVITY PLAN
PHASE 2**

Path: K:\Work\1829202-02_GC107.dwg
 Date: Tuesday, November 20, 2018 1:34:47 PM

LEGEND

- WORK AREA LIMITS
- RSA — RUNWAY SAFETY AREA
- ▒ PAVEMENT CLOSED TO AIRCRAFT
- LOW PROFILE BARRICADES
- ⊖ TEMPORARY "DO NOT ENTER" SIGN (SEE NOTE 1)
- ✈ AIRCRAFT MOVEMENT AREA
- ✕ TAXIWAY CLOSURE MARKER
- ✖ RUNWAY CLOSURE MARKER



PHASE 3A WORK AREA

93'

SEE NOTE 1 (TYPICAL)

TAXIWAY F

TAXIWAY C

TXY D

RSA RSA

250'

RUNWAY 7-25

AIRFIELD IMPACT MATRIX		
PHASE	LIMITS OF CLOSURE	WORK ITEMS
PHASE 3A	RUNWAY 7/25 - OPEN	PAVEMENT MARKIG AIRCRAFT RELOCATION (BY OTHERS)
	RUNWAY 18/36 - OPEN	
	TAXIWAY A - OPEN	
	TAXIWAY C - CLOSED NORTH OF TAXIWAY F (NO APRON ACCESS)	
	TAXIWAY D - OPEN	
	TAXIWAY F - OPEN	
APRON TAXIWAY - CLOSED NORTH OF TAXIWAY F (NO APRON ACCESS)		
APRON - PARTIAL CLOSURE (WEST SIDE ONLY)		

NOTE

1. AT EACH BARRICADE LINE OR AS DIRECTED BY THE ENGINEER, THE CONTRACTOR SHALL INSTALL A MOUNTED "DO NOT ENTER" AND "AIRCRAFT MOVEMENT AREA" SIGN.

100% SUBMITTAL
NOVEMBER 16TH, 2018

REHABILITATE TAXIWAY
C, D AND F



Whiteside County **AIRPORT**
JOSEPH H. BITTORF FIELD

WHITESIDE COUNTY AIRPORT
AUTHORITY
STERLING - ROCK FALLS, IL

MARK	DATE	DESCRIPTION

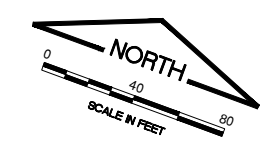
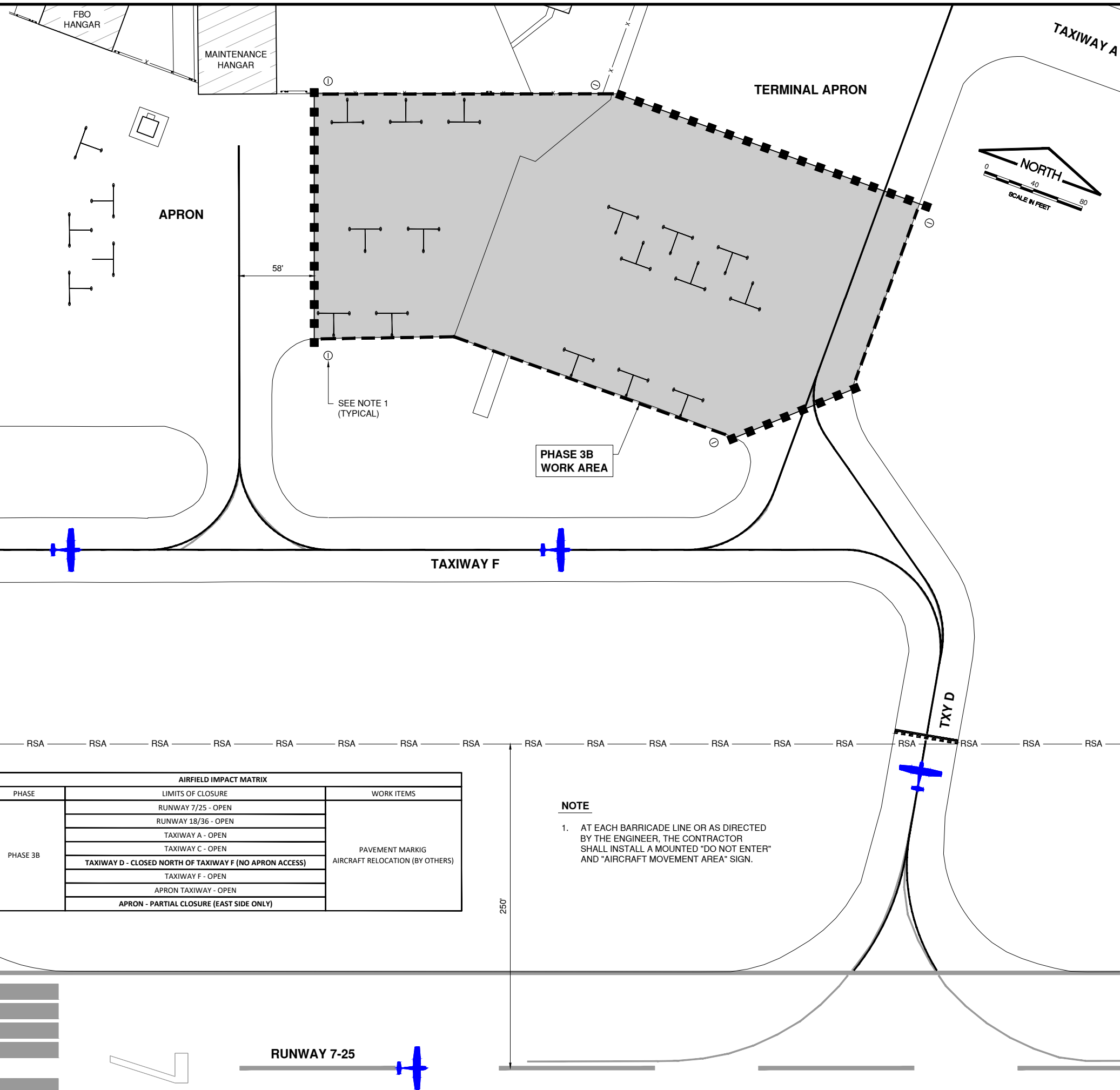
SBG PROJ. NO:	3-17-SBGP-144
IL PROJ. NO:	SQI-4689
CMT PROJECT NO:	18292-02-00
CAD DWG FILE:	1829202-GC108.DWG
DESIGNED BY:	NRF
DRAWN BY:	JRO
CHECKED BY:	CMT-ARR
APPROVED BY:	DJK
COPYRIGHT:	

SHEET TITLE
**CONSTRUCTION
ACTIVITY PLAN
PHASE 3A**

Path: K:\whiteside\18292-02_rehab\by\caredi\Draw\Sheets\1829202-GC108.dwg
Date: Friday, November 16, 2018 2:02:15 PM

LEGEND

- WORK AREA LIMITS
- RSA RUNWAY SAFETY AREA
- PAVEMENT CLOSED TO AIRCRAFT
- LOW PROFILE BARRICADES
- TEMPORARY "DO NOT ENTER" SIGN (SEE NOTE 1)
- AIRCRAFT MOVEMENT AREA
- TAXIWAY CLOSURE MARKER
- RUNWAY CLOSURE MARKER



100% SUBMITTAL
NOVEMBER 16TH, 2018

REHABILITATE TAXIWAY
C, D AND F



Whiteside County AIRPORT
JOSEPH H. BITTORF FIELD

WHITESIDE COUNTY AIRPORT
AUTHORITY
STERLING - ROCK FALLS, IL

AIRFIELD IMPACT MATRIX		
PHASE	LIMITS OF CLOSURE	WORK ITEMS
PHASE 3B	RUNWAY 7/25 - OPEN	PAVEMENT MARKIG AIRCRAFT RELOCATION (BY OTHERS)
	RUNWAY 18/36 - OPEN	
	TAXIWAY A - OPEN	
	TAXIWAY C - OPEN	
	TAXIWAY D - CLOSED NORTH OF TAXIWAY F (NO APRON ACCESS)	
	TAXIWAY F - OPEN	
	APRON TAXIWAY - OPEN	
	APRON - PARTIAL CLOSURE (EAST SIDE ONLY)	

NOTE

1. AT EACH BARRICADE LINE OR AS DIRECTED BY THE ENGINEER, THE CONTRACTOR SHALL INSTALL A MOUNTED "DO NOT ENTER" AND "AIRCRAFT MOVEMENT AREA" SIGN.

MARK	DATE	DESCRIPTION

SBG PROJ. NO:	3-17-SBGP-144
IL PROJ. NO:	SQI-4689
CMT PROJECT NO:	18292-02-00
CAD DWG FILE:	1829202-GC109.DWG
DESIGNED BY:	NRF
DRAWN BY:	JRO
CHECKED BY:	CMT-ARR
APPROVED BY:	DJK
COPYRIGHT:	

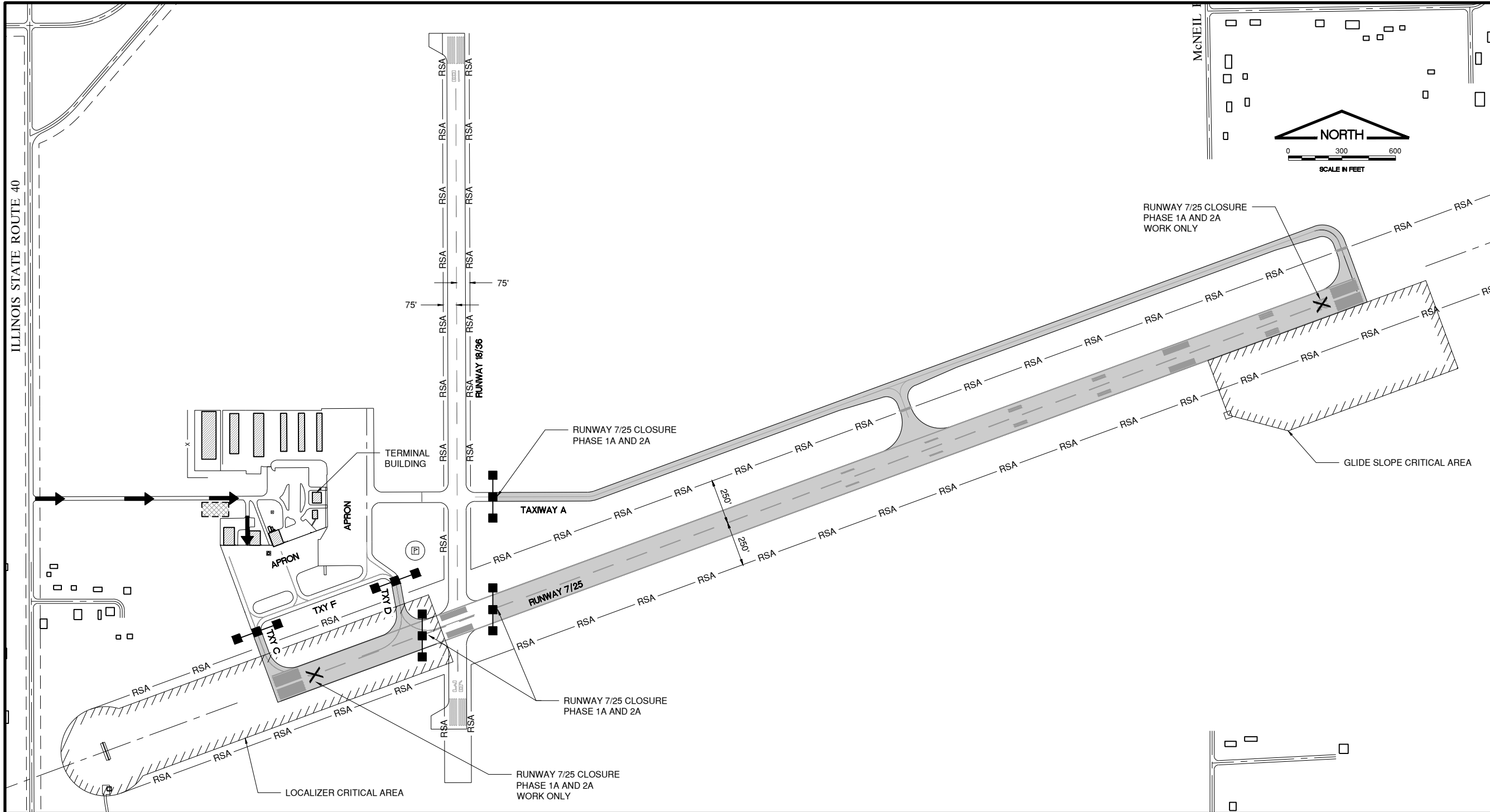
SHEET TITLE
**CONSTRUCTION
ACTIVITY PLAN
PHASE 3B**

GC109
SHEET 11 OF 21

Path: K:\whiteside\18292-02_rehab\by\caredi\Draw\Sheets\1829202-GC109.dwg
Date: Friday, November 16, 2018 2:02:20 PM



ILLINOIS STATE ROUTE 40



RUNWAY 7/25 CLOSURE
PHASE 1A AND 2A
WORK ONLY



SCALE IN FEET

100% SUBMITTAL
NOVEMBER 16TH, 2018

REHABILITATE TAXIWAY
C, D AND F



OWNER

Whiteside County **AIRPORT**
JOSEPH H. BITTORF FIELD

WHITESIDE COUNTY AIRPORT
AUTHORITY
STERLING - ROCK FALLS, IL

LEGEND

- WORK AREA LIMITS
- RSA RUNWAY SAFETY AREA
- PAVEMENT CLOSED TO AIRCRAFT
- LOW PROFILE BARRICADES
- TEMPORARY "DO NOT ENTER" SIGN (SEE NOTE 1)
- CONTRACTOR'S ACCESS
- AIRCRAFT MOVEMENT AREA
- TAXIWAY CLOSURE MARKER
- RUNWAY CLOSURE MARKER

MARK	DATE	DESCRIPTION

SBG PROJ. NO: 3-17-SBGP-144
IL PROJ. NO: SQI-4689
CMT PROJECT NO: 18292-02-00
CAD DWG FILE: 1829202-GC102.DWG
DESIGNED BY: NRF
DRAWN BY: JRO
CHECKED BY: CMT-ARR
APPROVED BY: DJK
COPYRIGHT:

SHEET TITLE
**CONSTRUCTION
ACTIVITY PLAN -
RUNWAY CLOSURE**

GC110
SHEET 12 OF 21

Path: K:\whiteside\18292-02_rehab\bycated\Draw\Sheets\1829202-GC102.dwg
Date: Friday, November 16, 2018 2:02:24 PM

100% SUBMITTAL
NOVEMBER 16TH, 2018

REHABILITATE TAXIWAY
C, D AND F



OWNER

Whiteside County AIRPORT
JOSEPH H. BITTORF FIELD

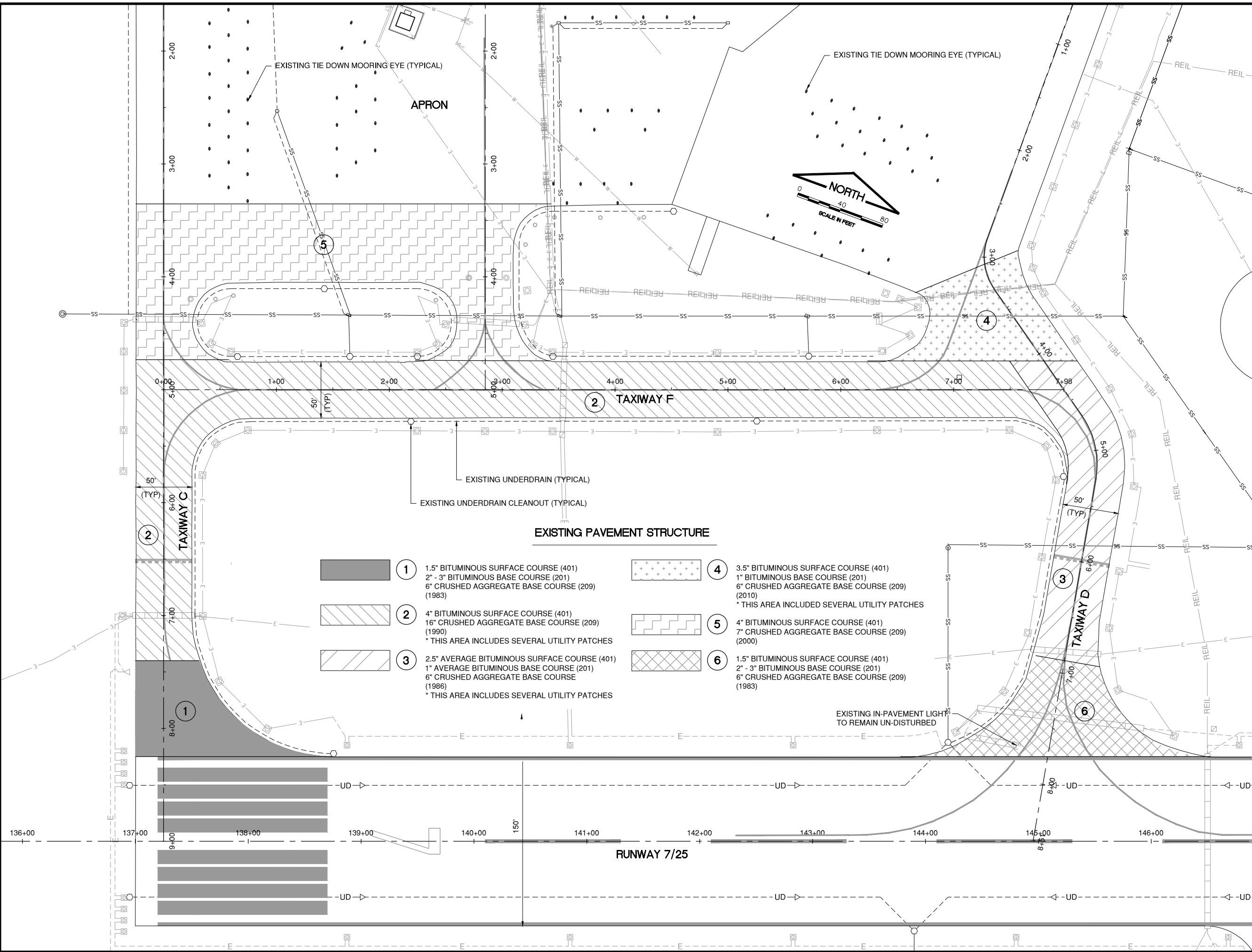
WHITESIDE COUNTY AIRPORT
AUTHORITY
STERLING - ROCK FALLS, IL

MARK | DATE | DESCRIPTION

SBG PROJ. NO:	3-17-SBGP-144
IL PROJ. NO:	SQI-4689
CMT PROJECT NO:	18292-02-00
CAD DWG FILE:	1829202-CD101.DWG
DESIGNED BY:	NRF
DRAWN BY:	JRO
CHECKED BY:	CMT-ARR
APPROVED BY:	DKJ
COPYRIGHT:	

SHEET TITLE
**EXISTING
CONDITIONS**

CD101
SHEET 13 OF 21



Path: K:\whiteside\18292-02_rehab\bycared\Draw\Sheets\1829202-CD101.dwg
Date: Friday, November 16, 2018 2:02:31 PM



MILLING LIMITS		
POINT	NORTHING	EASTING
1	1848612.81	2428666.40
2	1848546.64	2428594.18
3	1848505.55	2428261.30
4	1848382.00	2427918.99
5	1847982.54	2428251.24
6	1847922.24	2428087.34
7	1848250.75	2428981.03
8	1848155.97	2428723.12

100% SUBMITTAL
NOVEMBER 16TH, 2018

REHABILITATE TAXIWAY
C, D AND F



OWNER

Whiteside County **AIRPORT**
JOSEPH H. BITTORF FIELD

WHITESIDE COUNTY AIRPORT
AUTHORITY
STERLING - ROCK FALLS, IL

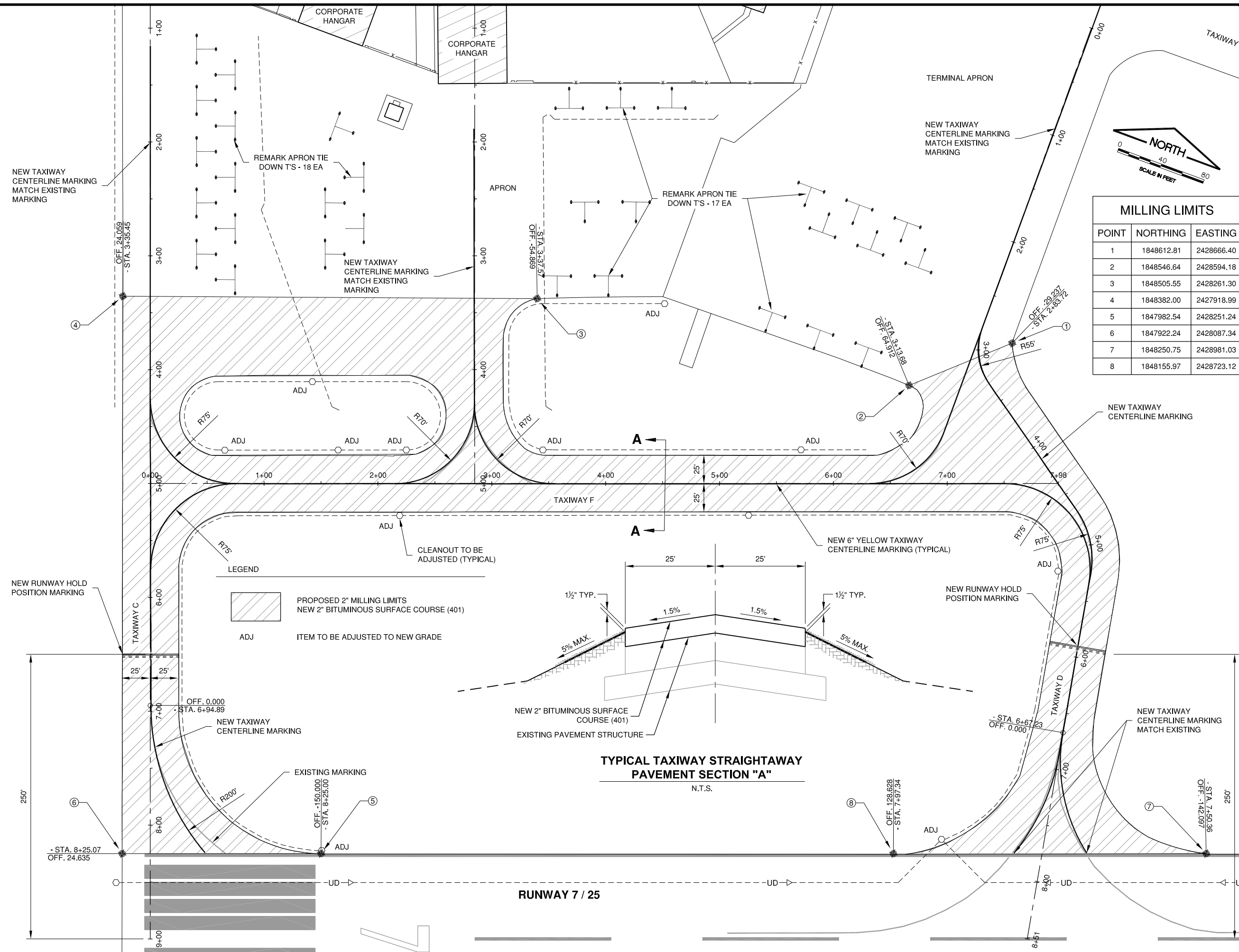
MARK	DATE	DESCRIPTION

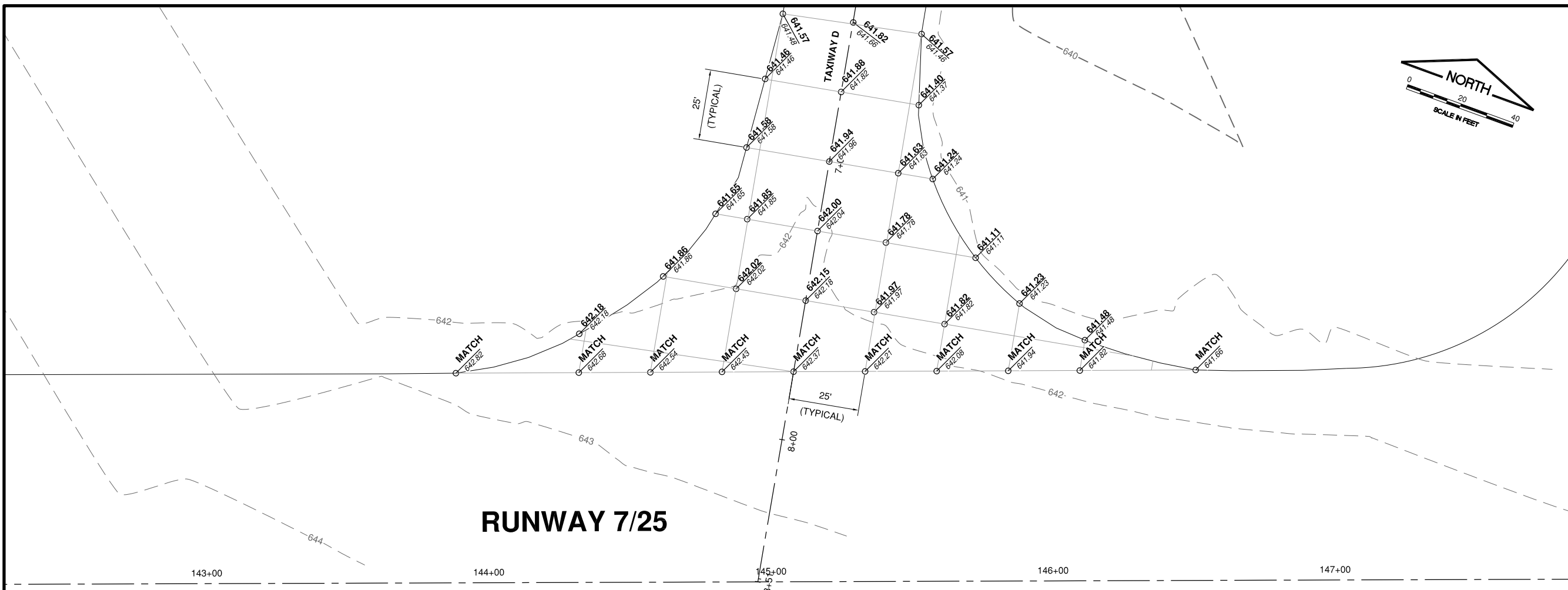
SBG PROJ. NO:	3-17-SBGP-144
IL PROJ. NO. SGI-4689	
CMT PROJECT NO:	18292-02-00
CAD DWG FILE:	1829202-CP101.DWG
DESIGNED BY:	NRF
DRAWN BY:	JRO
CHECKED BY:	CMT-ARR
APPROVED BY:	DJK
COPYRIGHT:	

SHEET TITLE
PROPOSED IMPROVEMENTS

CP101
SHEET 14 OF 21

Path: K:\whiteside\proj\18292-02-00\1829202-CP101.dwg
 Date: Tuesday, November 20, 2018 3:10:50 PM





RUNWAY 7/25

100% SUBMITTAL
NOVEMBER 16TH, 2018

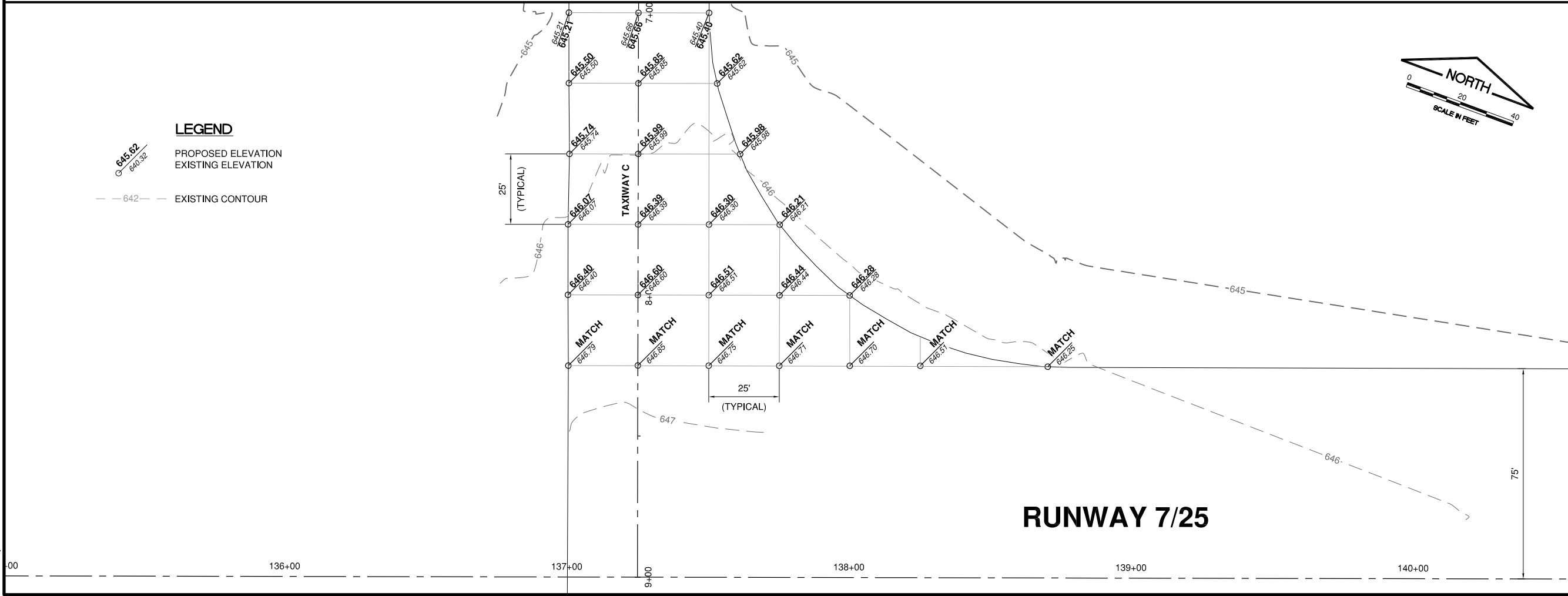
REHABILITATE TAXIWAY
C, D AND F



OWNER

Whiteside County AIRPORT
JOSEPH H. BITTORF FIELD

WHITESIDE COUNTY AIRPORT
AUTHORITY
STERLING - ROCK FALLS, IL



RUNWAY 7/25

LEGEND

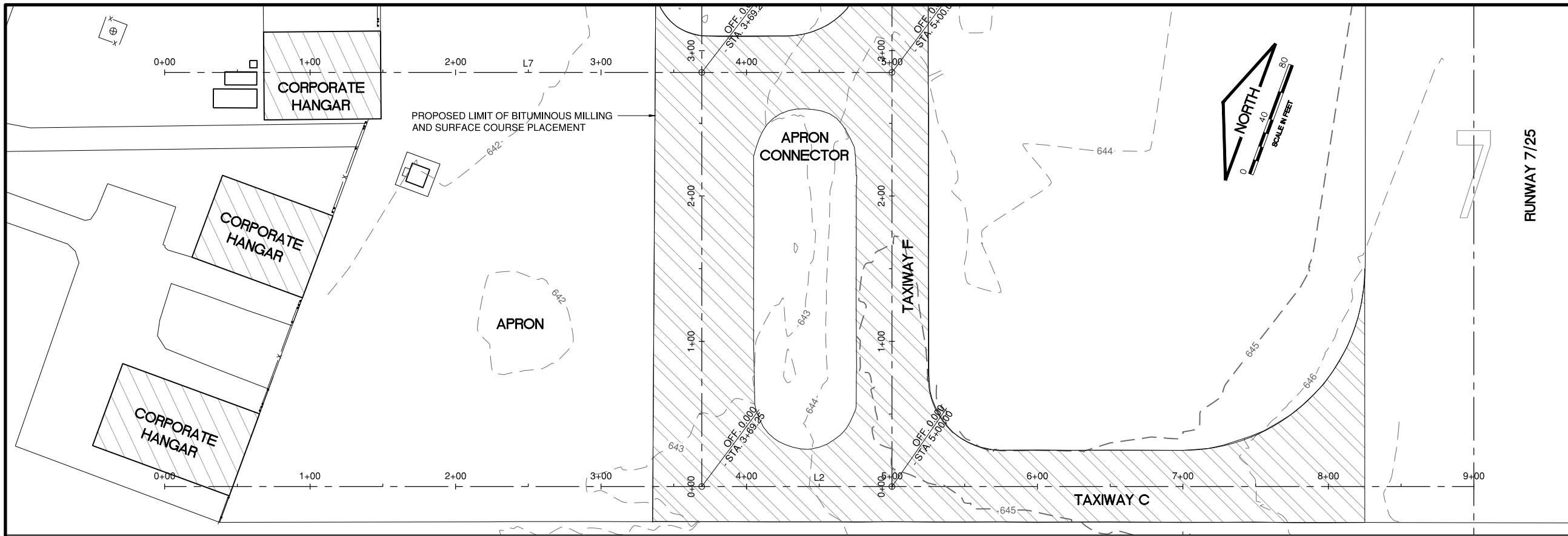
- PROPOSED ELEVATION
- EXISTING CONTOUR

MARK	DATE	DESCRIPTION

SBG PROJ. NO:	3-17-SBGP-144
IL PROJ. NO:	SQI-4689
CMT PROJECT NO:	18292-02-00
CAD DWG FILE:	1829202-CS102.DWG
DESIGNED BY:	NRF
DRAWN BY:	JRO
CHECKED BY:	CMT-ARR
APPROVED BY:	DJK
COPYRIGHT:	

SHEET TITLE
**STAKING PLAN -
SHEET 2**

Path: K:\whiteside\proj\18292-02-00_rh\sh\stake\Draw\Sheets\1829202-CS102.dwg
 Date: Tuesday, November 20, 2018 3:11:53 PM



100% SUBMITTAL
NOVEMBER 16TH, 2018

REHABILITATE TAXIWAY
C, D AND F

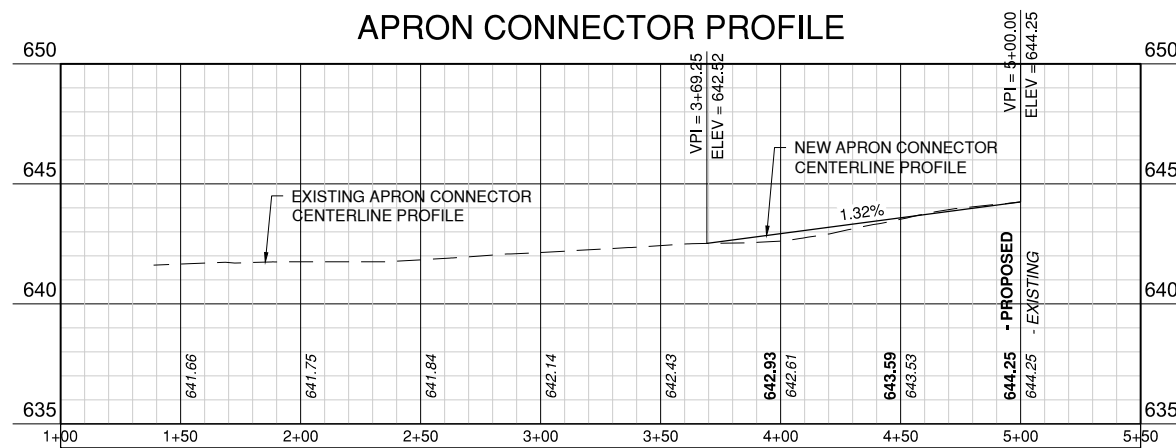


OWNER

Whiteside County AIRPORT
JOSEPH H. BITTORF FIELD

WHITESIDE COUNTY AIRPORT
AUTHORITY
STERLING - ROCK FALLS, IL

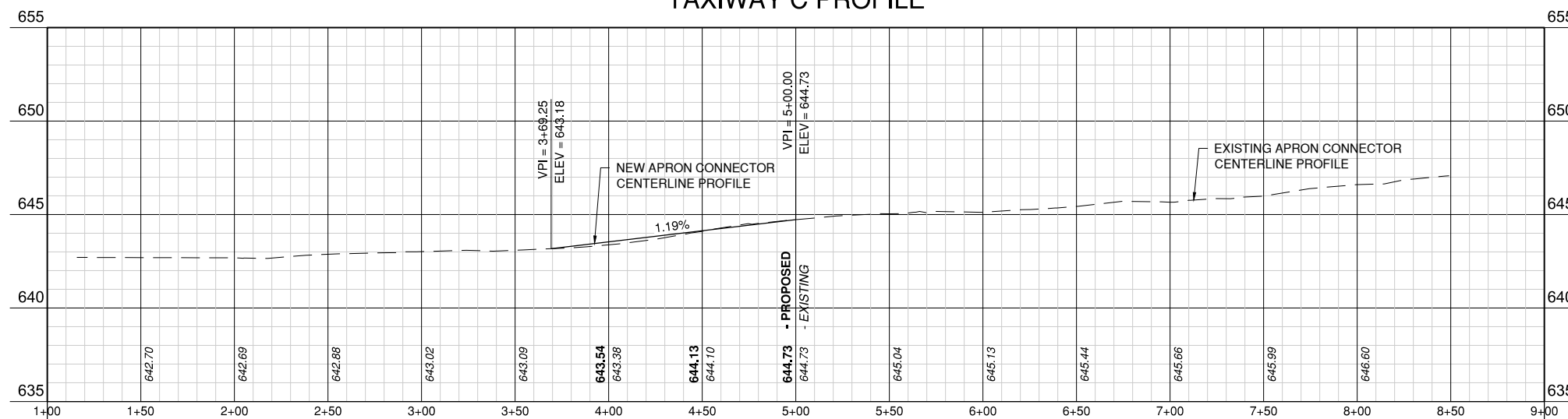
APRON CONNECTOR PROFILE



ALIGNMENT DATA					
ALIGNMENT SEGMENT	ALIGNMENT	BEGIN STATION/ PI STATION	NORTHING/ EASTING	END STATION/ CURVE RADIUS	NORTHING/ EASTING
L2	TAXIWAY C	STA. 0+00.00	N:1848705.1552 E:2427825.8531	STA. 9+00.00	N: 1847860.3992 E: 2428136.3163

ALIGNMENT DATA					
ALIGNMENT SEGMENT	ALIGNMENT	BEGIN STATION/ PI STATION	NORTHING/ EASTING	END STATION/ CURVE RADIUS	NORTHING/ EASTING
L7	APRON CONNECTOR	STA. 0+00.00	N:1848803.4669 E:2428093.3549	STA. 5+00.00	N: 1848334.1580 E: 2428265.8344

TAXIWAY C PROFILE

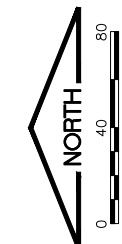


MARK | DATE | DESCRIPTION

SBG PROJ. NO: 3-17-SBGP-144
IL. PROJ. NO. SGI-4689
CMT PROJECT NO: 18292-02-00
CAD DWG FILE: 1829202-CP202.DWG
DESIGNED BY: NRF
DRAWN BY: JRO
CHECKED BY: CMT-ARR
APPROVED BY: DJK
COPYRIGHT:

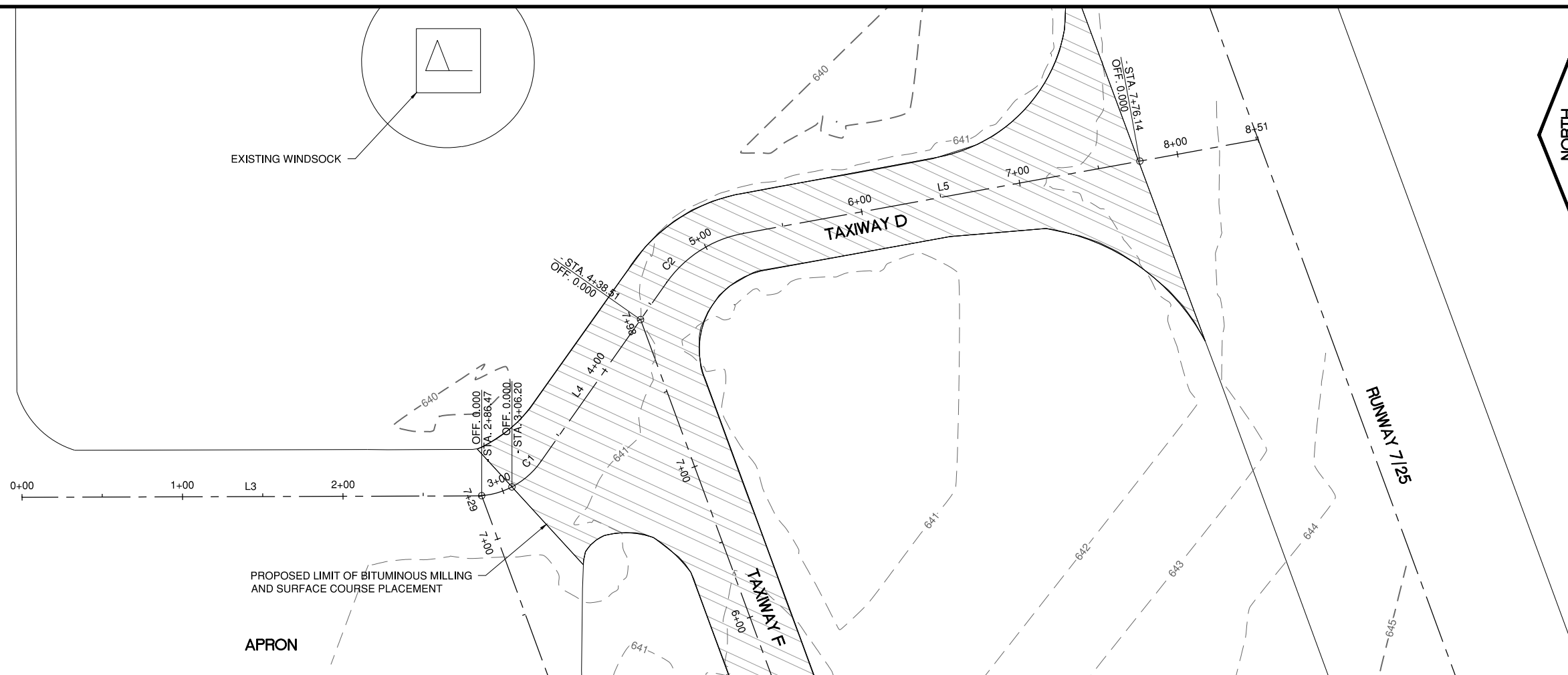
SHEET TITLE
**TAXIWAY C & APRON
CONNECTOR PLAN &
PROFILE**

CP201
SHEET 17 OF 21



TAXIWAY A

EXISTING WINDSOCK



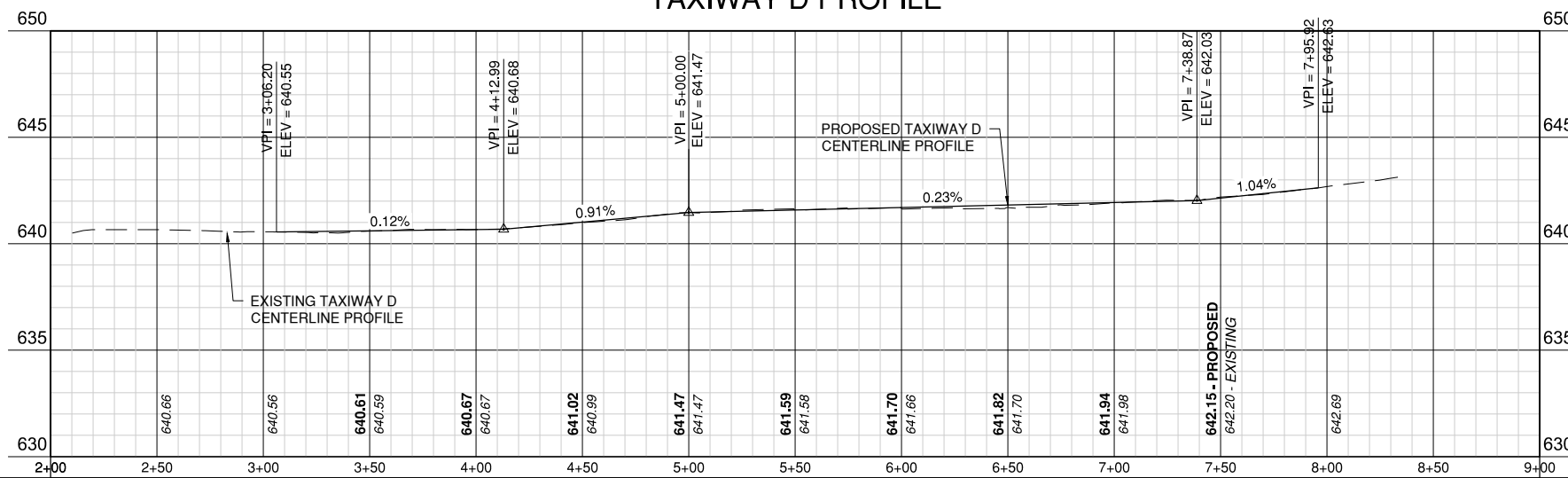
PROPOSED LIMIT OF BITUMINOUS MILLING AND SURFACE COURSE PLACEMENT

APRON

ALIGNMENT DATA

ALIGNMENT SEGMENT	ALIGNMENT	BEGIN STATION/ PI STATION	NORTHING/ EASTING	END STATION/ CURVE RADIUS	NORTHING/ EASTING
L3	TAXIWAY D	STA. 0+00.00	N:1848896.4347 E:2428636.2477	STA. 2+85.14	N: 1848611.3010 E: 2428637.1630
C1	TAXIWAY D	CENTER STA. 3+09.44	PI N:1848587.0429 PI E:2428638.6708	R = 50.408	CENTER N: 1848614.4282 E: 2428687.4742
L4	TAXIWAY D	STA. 3+30.43	N:1848573.1160 E:2428658.5900	STA. 4+66.73	N: 1848494.7935 E: 2428770.1372
C2	TAXIWAY D	CENTER STA. 4+97.48	PI N:1848477.1218 PI E:2428795.3053	R = 75.000	CENTER N: 1848433.4131 E: 2428727.0391
L5	TAXIWAY D	STA. 5+25.10	N:1848446.8681 E:2428800.8223	STA. 8+51.14	N: 1848126.1142 E: 2428859.3147

TAXIWAY D PROFILE



100% SUBMITTAL
NOVEMBER 16TH, 2018

REHABILITATE TAXIWAY
C, D AND F



Whiteside County **AIRPORT**
JOSEPH H. BITTORF FIELD

WHITESIDE COUNTY AIRPORT
AUTHORITY
STERLING - ROCK FALLS, IL

MARK | DATE | DESCRIPTION

SBG PROJ. NO: 3-17-SBGP-144

IL PROJ. NO: SQT-4689

CMT PROJECT NO: 18292-02-00

CAD DWG FILE: 1829202-GI501.DWG

DESIGNED BY: NRF

DRAWN BY: JRO

CHECKED BY: CMT-ARR

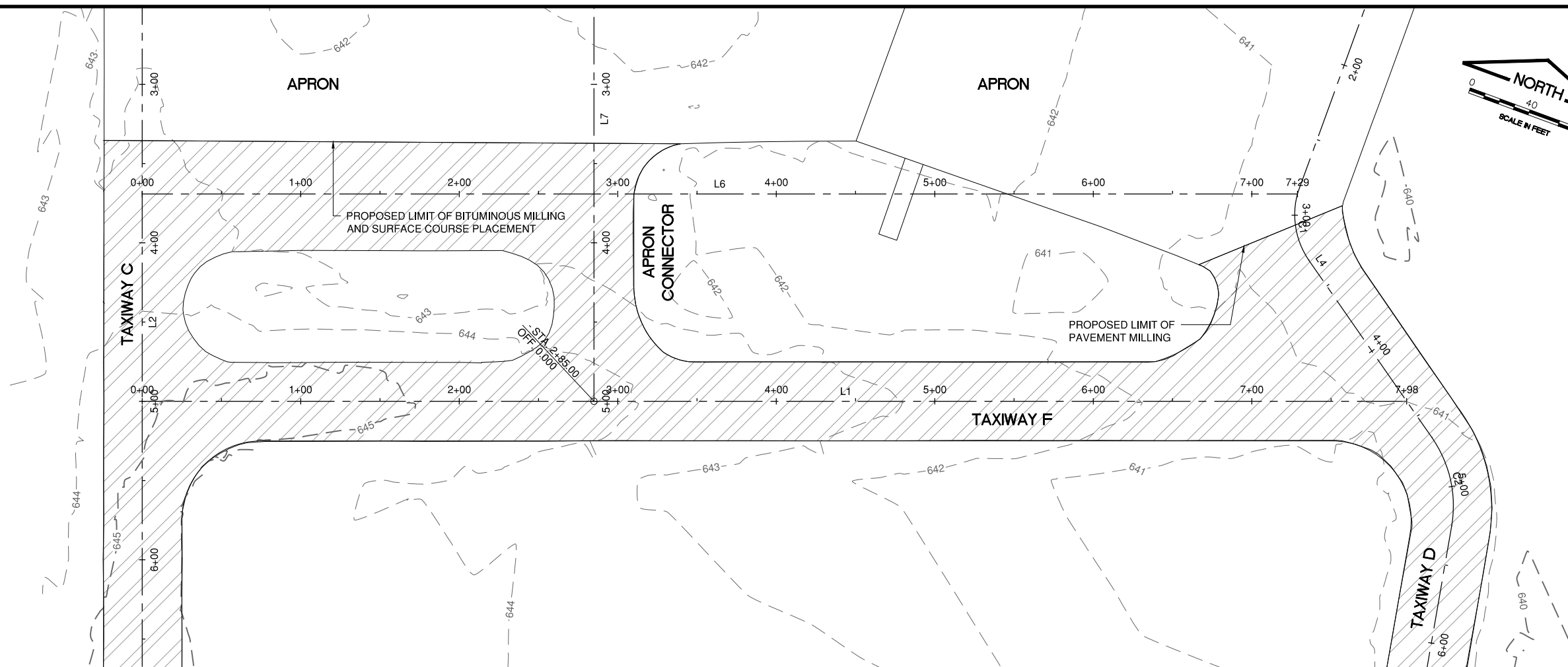
APPROVED BY: DJK

COPYRIGHT:

SHEET TITLE

TAXIWAY D PLAN &
PROFILE

CP202
SHEET 18 OF 21



100% SUBMITTAL
NOVEMBER 16TH, 2018

REHABILITATE TAXIWAY
C, D AND F



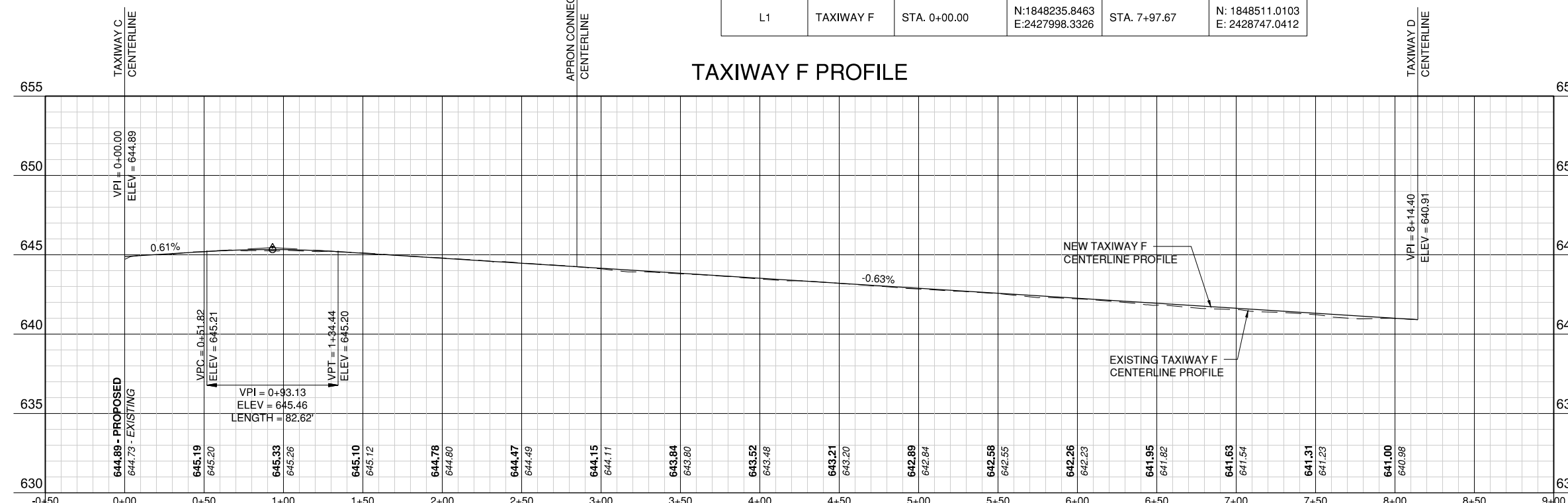
OWNER

Whiteside County AIRPORT
JOSEPH H. BITTORF FIELD

WHITESIDE COUNTY AIRPORT
AUTHORITY
STERLING - ROCK FALLS, IL

ALIGNMENT DATA					
ALIGNMENT SEGMENT	ALIGNMENT	BEGIN STATION/ PI STATION	NORTHING/ EASTING	END STATION/ CURVE RADIUS	NORTHING/ EASTING
L1	TAXIWAY F	STA. 0+00.00	N:1848235.8463 E:2427998.3326	STA. 7+97.67	N: 1848511.0103 E: 2428747.0412

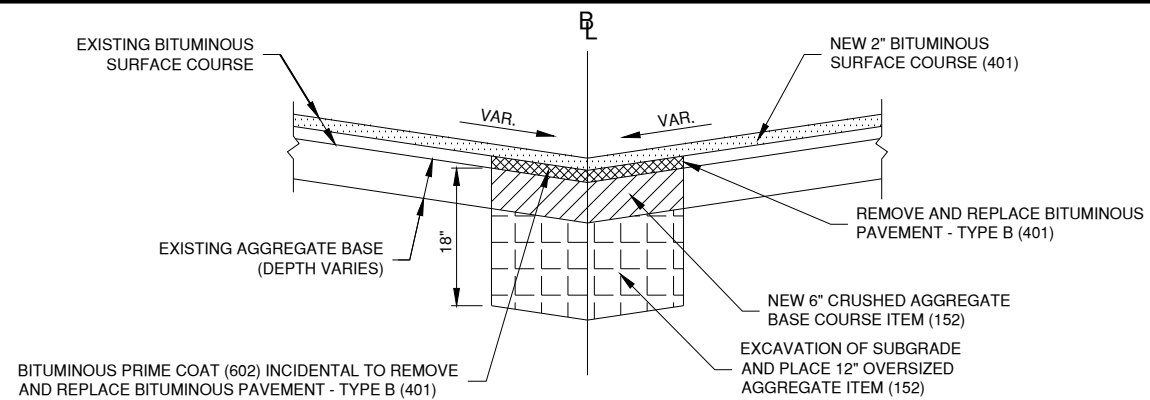
TAXIWAY F PROFILE



MARK | DATE | DESCRIPTION

SBG PROJ. NO:	3-17-SBGP-144
IL PROJ. NO:	SQI-4689
CMT PROJECT NO:	18292-02-00
CAD DWG FILE:	1829202-CP203.DWG
DESIGNED BY:	NRF
DRAWN BY:	JRO
CHECKED BY:	CMT-ARR
APPROVED BY:	DJK
COPYRIGHT:	

SHEET TITLE
**TAXIWAY F PLAN &
PROFILE**

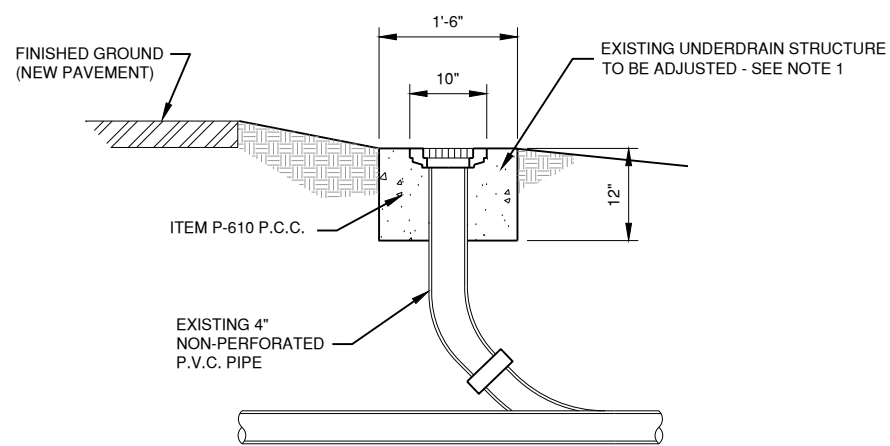


SUBGRADE REPAIR DETAIL

N.T.S.

NOTES:

1. LOCATION OF SUBGRADE REPAIR SHALL BE DETERMINED AT THE TIME OF CONSTRUCTION AND APPROVED BY THE RESIDENT ENGINEER.
2. LENGTH AND WIDTH OF SUBGRADE REPAIR SHALL VARY DEPENDENT ON THE AFFECT AREA IN NEED OF REPAIR.
3. THE FOLLOWING SHALL BE THE STEPS TAKEN TO REPAIR THE SUBGRADE:
 - 3.A. REMOVE ADDITIONAL 2" OF BITUMINOUS SURFACE COURSE - (IF NEEDED)
 - 3.B. REMOVE EXISTING AGGREGATE SUBBASE IN AREAS THAT REQUIRE SUBGRADE REPAIR.
 - 3.C. EXCAVATE 18" DEPTH OF SUBGRADE.
 - 3.D. COMPACT EXPOSED SUBGRADE.
 - 3.E. PLACE GEOTEXTILE FABRIC ITEM AR209600 ON TOP OF COMPACTED SUBGRADE.
 - 3.F. PLACE AND COMPACT OVERSIZED AGGREGATE ITEM 208 AT A THICKNESS OF 12".
 - 3.G. PLACE AND COMPACT 6" CRUSHED AGGREGATE ITEM 209, MEETING THE GRADES OF THE ADJACENT EXISTING AGGREGATE LAYER.
4. APPLY PRIME COAT AND CONSTRUCT BITUMINOUS LAYER AS SPECIFIED IN THE PLANS.
5. METHODS OF CONSTRUCTION SHALL MEET THE REQUIREMENTS SPECIFIED IN THE SPECIAL PROVISIONS.
6. ITEMS TO BE INCLUDED IN PAYMENT FOR SUBGRADE REPAIR ARE 3A, 3B, 3C, 3D, AND 3F. (AR152511)



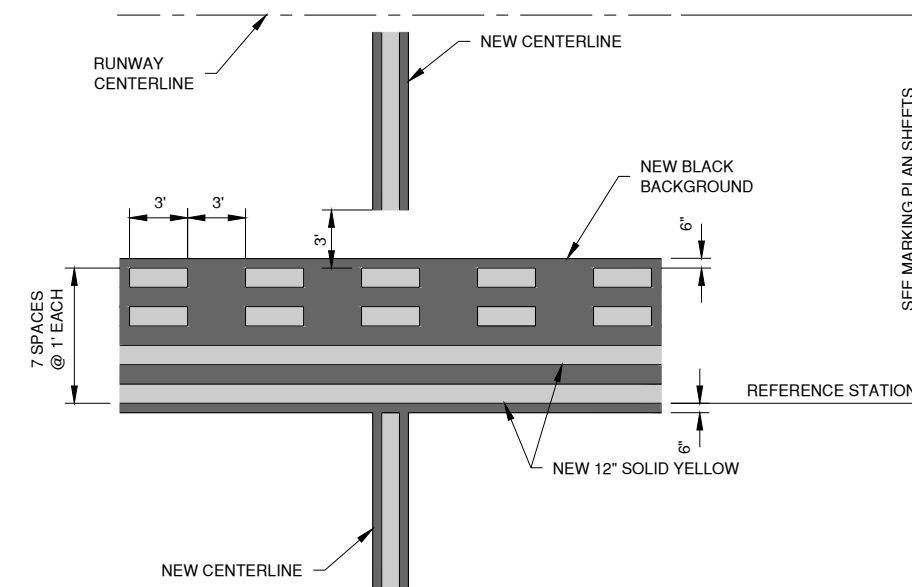
SIDE VIEW

UNDERDRAIN CLEANOUT ADJUSTMENT DETAIL

N.T.S.

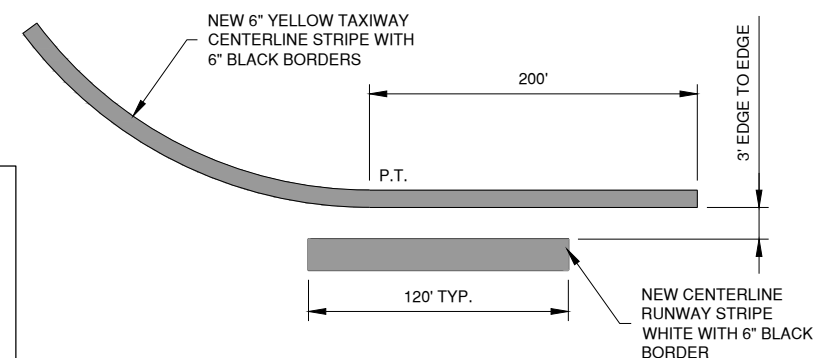
NOTES:

1. UNDERDRAIN CLEANOUTS TO BE ADJUSTED WILL BE DETERMINED BY THE RESIDENT ENGINEER AFTER ALL PROPOSED PAVING HAS BEEN COMPLETED.
2. ALL ADJUSTMENTS TO BRING THE EXISTING UNDERDRAIN CLEANOUT CASTINGS AND FRAMES TO MATCH NEW TURF GRADES SHALL BE DONE BY EXCAVATING AROUND THE CLEANOUT TO ALLOW THE MANUAL ADJUSTMENT (UP OR DOWN) OF THE ENTIRE CLEANOUT, INCLUDING CONCRETE ENCASEMENT, TO THE REQUIRED ELEVATION AND BACKFILLING WITH AGGREGATE OR APPROVED SUBSTITUTION MATERIAL TO ENSURE STABILITY.



2 RUNWAY HOLDING POSITION MARKING

N.T.S.



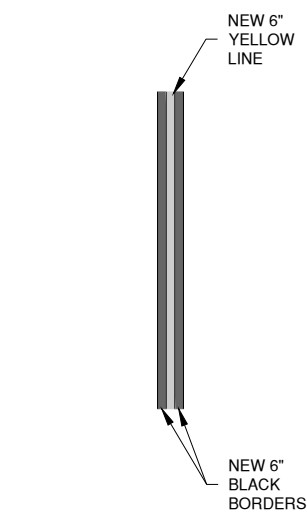
NEW TAXIWAY EXIT MARKING DETAIL

6

N.T.S.

MARKING NOTE

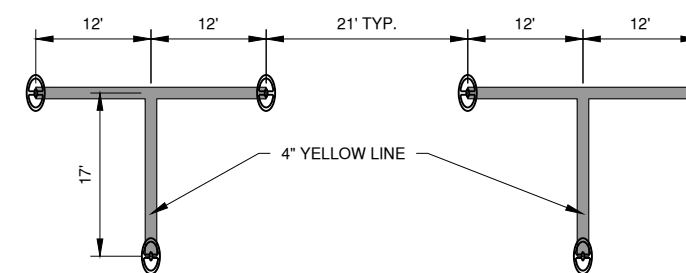
1. ALL NEW AIRFIELD PAVEMENT MARKING SHALL HAVE REFLECTIVE BEADS & 6" BLACK BORDER WHICH ARE INCIDENTAL TO YELLOW MARKINGS.
2. BLACK BORDER DOES NOT RECEIVE REFLECTIVE BEADS.
3. TIE DOWN MARKINGS SHALL NOT RECEIVE BLACK BORDER.



TAXIWAY CENTERLINE CONTINUOUS

2

N.T.S.



7 TIEDOWN MARKING DETAIL

7

N.T.S.

100% SUBMITTAL
NOVEMBER 16TH, 2018

REHABILITATE TAXIWAY
C, D AND F



OWNER

Whiteside County **AIRPORT**
JOSEPH H. BITTORF FIELD

WHITESIDE COUNTY AIRPORT
AUTHORITY
STERLING - ROCK FALLS, IL

MARK	DATE	DESCRIPTION

SBG PROJ. NO: 3-17-SBGP-144

IL PROJ. NO. SQI-4689

CMT PROJECT NO: 18292-02-00

CAD DWG FILE: 1829202-CJ501.DWG

DESIGNED BY: NRF

DRAWN BY: JRO

CHECKED BY: CMT-ARR

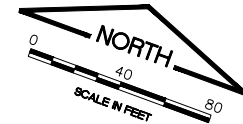
APPROVED BY: DJK

COPYRIGHT:

SHEET TITLE

**PAVING, MARKING
AND MISCELLANEOUS
DETAILS**

CJ501
SHEET 20 OF 21



LEGEND

- NEW SHOULDER ADJUSTMENT, SEEDING AND KNITTED STRAW MAT
- EXISTING CONTOUR

APRON

TAXIWAY F

TAXIWAY D

TAXIWAY C

RUNWAY 7/25

NOTES

1. SHOULDER ADJUSTMENT SHALL BE AS SHOWN IN SHOULDER DETAIL "A"
2. A NOMINAL 5' WIDTH WILL BE REQUIRED TO MEET THE 5% SLOPE.
3. ACTUAL LOCATION MAY VARY AT THE R.E.'S DISCRETION.

SHOULDER DETAIL "A"

N.T.S.

EXISTING GROUND

NEW KNITTED STRAW MAT 5' WIDE (908)

SHOULDER ADJUSTMENT (152) AND SEEDING (901)

NEW 2" BITUMINOUS SURFACE COURSE (401)

EXISTING PAVEMENT STRUCTURE

STA. 3+10.44
OFF. 29.677

OFF. 33.984
STA. 2+49.77

OFF. 143.225
STA. 8+20.05

OFF. 119.178
STA. 7+91.31

OFF. 140.112
STA. 7+46.07

STA. 8+56.03
OFF. 29.942

Path: K:\whiteside\18292-02_rehab\bycared\Draw\Sheets\1829202-LG101.dwg
Date: Friday, November 16, 2018 2:03:36 PM

100% SUBMITTAL
NOVEMBER 16TH, 2018

REHABILITATE TAXIWAY C, D AND F



OWNER

Whiteside County AIRPORT
JOSEPH H. BITTORF FIELD

WHITESIDE COUNTY AIRPORT AUTHORITY
STERLING - ROCK FALLS, IL

MARK | DATE | DESCRIPTION

SBG PROJ. NO: 3-17-SBGP-144
IL PROJ. NO: SGI-4689
CMT PROJECT NO: 18292-02-00
CAD DWG FILE: 1829202-LG101.DWG
DESIGNED BY: NRF
DRAWN BY: JRO
CHECKED BY: CMT-ARR
APPROVED BY: DJK
COPYRIGHT:

LANDSCAPING PLAN

LG101