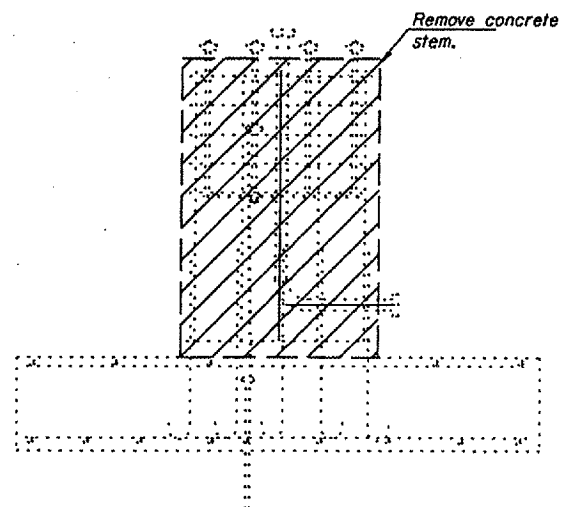
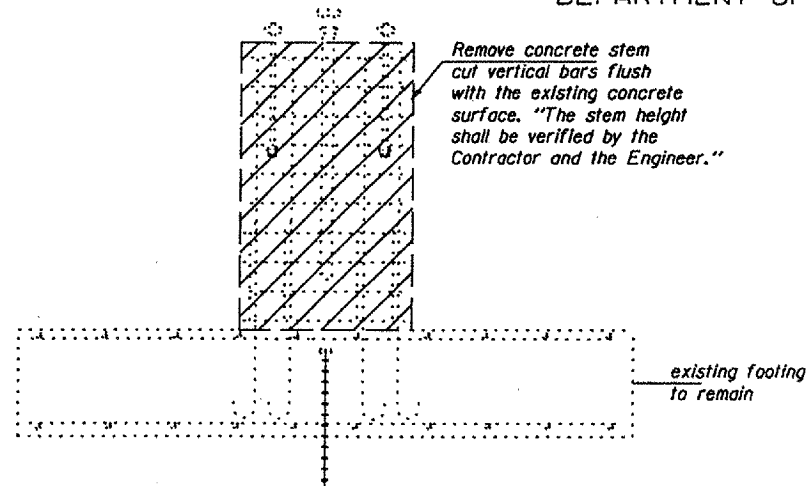


STATE OF ILLINOIS
DEPARTMENT OF TRANSPORTATION

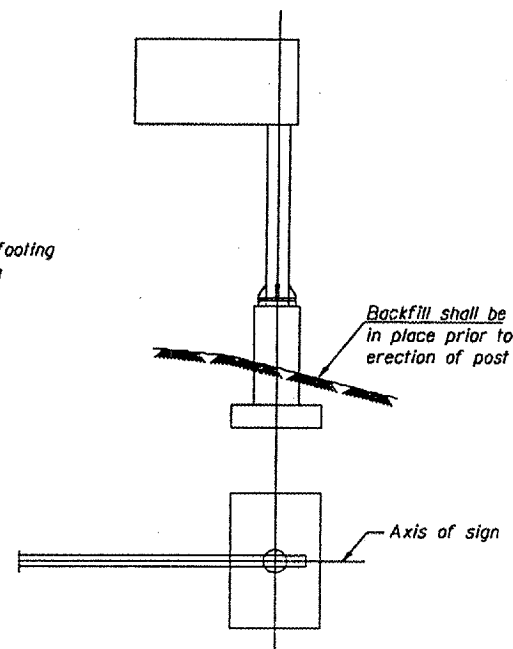
Various Routes
OVD SIN STR REP & REPL 2007-9
Various Counties
Sheet 30 of 50
Contract Number 44933



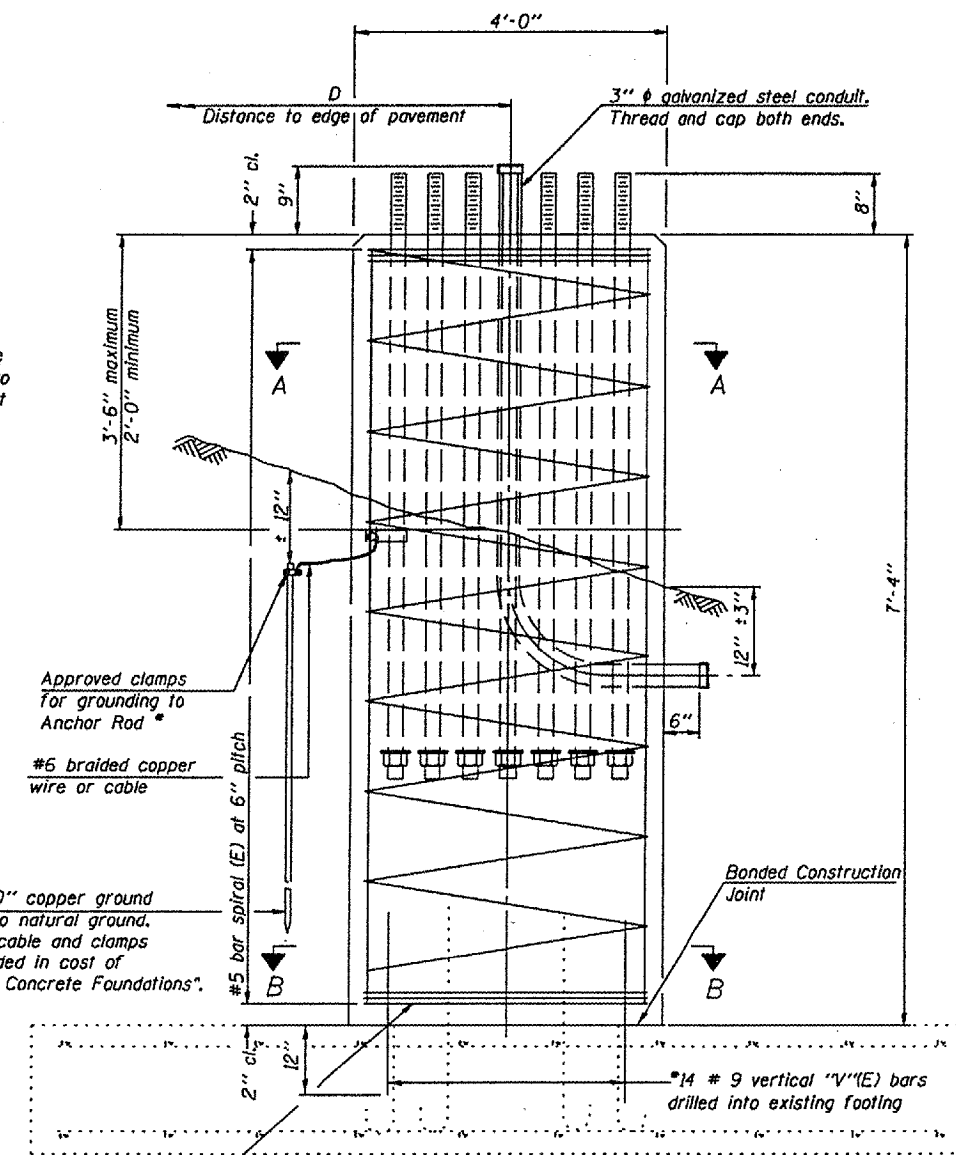
EXISTING END ELEVATION



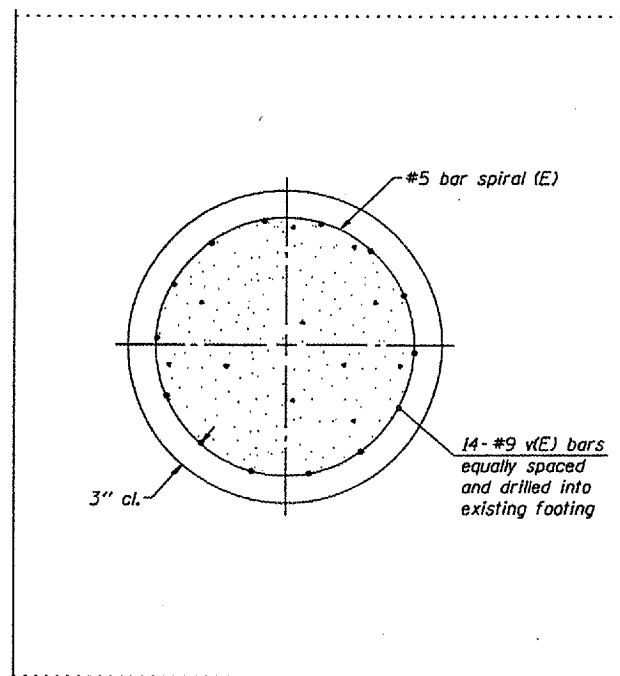
EXISTING END ELEVATION



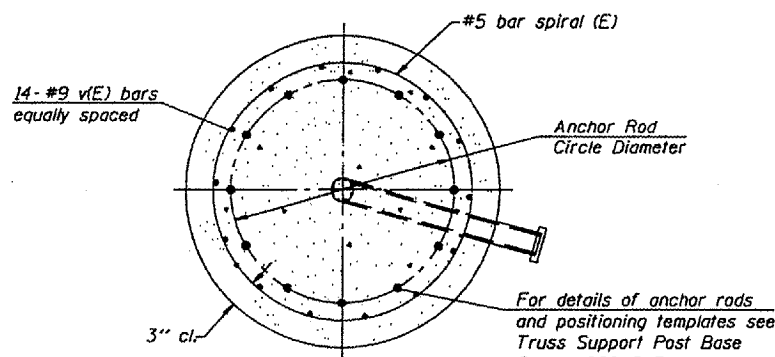
FOOTING PLAN



PROPOSED ELEVATION



SECTION B-B
4'-0" diameter stem



SECTION A-A
4'-0" diameter shaft

* #9 vertical bars shall be epoxy grouted in accordance with section 584 of the Std. Specifications. Minimum embedment into the concrete shall be 12".

Structure No. 2C101AUBOR000.0

OVERHEAD SIGN STRUCTURES
SPREAD FOOTING DETAILS
FOR TYPE II-C-A

District 2
Truss Replacement

DESIGNED -	200
CHECKED -	EXAMINED
DRAWN -	PASSED
CHECKED -	ENGINEER OF BRIDGES AND STRUCTURES

Concrete shall be placed monolithically, with a bonded construction joint as shown. Backfill shall be placed per Article 502 of Standard Specification and prior to erection of support column. A normal surface finish followed by a Bridge Seal Sealer application will be required on concrete surfaces above the lowest elevation 6" below finished ground line. Cost included in "Concrete Foundation".