

ROUTE	SECTION	COUNTY	TOTAL SHEETS	SHEET NUMBER
F.A.P. 305	2005-047BP	COOK	12	1

FOR INDEX OF SHEETS SEE SHEET 2

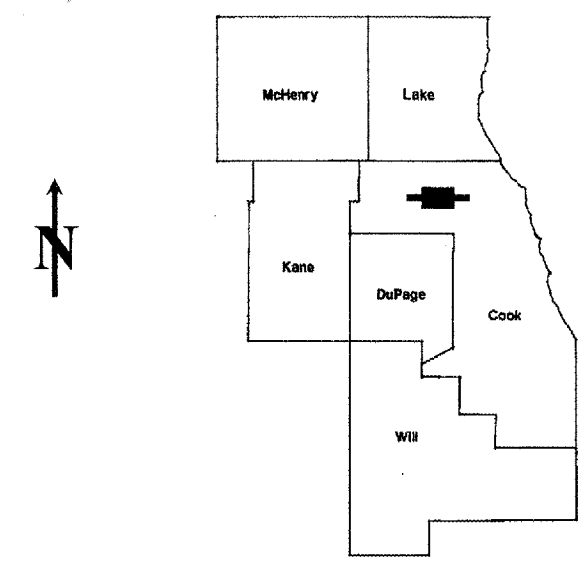
STATE OF ILLINOIS
DEPARTMENT OF
TRANSPORTATION
DIVISION OF HIGHWAYS
DISTRICT ONE
PROPOSED HIGHWAY PLANS

F.A.P. 305 (PALATINE RD.)
VARIOUS LOCATIONS
SECTION 2005-047 BP
BRIDGE PAINTING
COOK COUNTY
C-91-285-05

IMPROVEMENTS ARE
LOCATED IN THE VILLAGE OF
WHEELING

Contract 60A22

D-91-285-05



LOCATION OF IMPROVEMENT INDICATED THUS:

- 1) SN 016-2812: PALATINE RD. OVER IL 83 (ELMHURST RD)
- 2) SN 016-2530, 2529: PALATINE RD. UNDER FRONTAGE RD
- 3) SN 016-0680: PALATINE RD UNDER WOLF RD
- 4) SN 016-2025: PALATINE RD UNDER WCRR
- 5.) SN 016-2786: PALATINE RD OVER US 45/IL 21 (MILWAUKEE AVE)
- 6.) SN 016-0530 PALATINE RD OVER DES PLAINES RIVER

STATE OF ILLINOIS
DEPARTMENT OF TRANSPORTATION
DIVISION OF HIGHWAYS

SUBMITTED: Nov. 2 2006
Brian O'Keefe
 DEPUTY DIRECTOR OF HIGHWAY, REGION ENGINEER

December 8, 2006
Eric E. Harms
 INTERIM ENGINEER OF DESIGN AND ENVIRONMENT

December 8, 2006
Milton K. See, P.E.
 DIRECTOR, DIVISION OF HIGHWAYS

PRINTED BY THE AUTHORITY
OF THE STATE OF ILLINOIS

J.U.L.I.E.: JOINT UTILITY LOCATION
 INFORMATION FOR EXCAVATION
 (800) 892-0123

C.U.A.N.: CHICAGO UTILITY
 ALERT NETWORK
 (312) 774-7000

DISTRICT ONE BUREAU OF DESIGN
 PLANPREP ENGINEER: KEN ENGR. BORO (847)705-4178

CONTRACT NO. 60A22

Rev.

ROUTE	SECTION	COUNTY	TOTAL SHEETS	SHEET NUMBER
VARIOUS	2005-047BP	COOK	12	2

Contract 60A22

INDEX OF SHEETS

- 1 TITLE SHEET
- 2 INDEX OF SHEETS, STATE STANDARDS AND GENERAL NOTES
- 3 GENERAL PAINT NOTES
- 4 LOCATION MAPS
- 5 SUMMARY OF QUANTITIES
- 6 EXISTING BRIDGE PLANS (SN 016-2812, -2530, -2529, -0680: LOCATION 1, 2 & 3)
- 7 EXISTING BRIDGE PLANS (SN 016-2025: LOCATION 4)
- 8 EXISTING BRIDGE PLANS (SN 016-2786: LOCATION 5)
- 9 EXISTING BRIDGE PLANS (SN 016-0530: LOCATION 6)
- 10 TRAFFIC CONTROL FOR SHOULDER CLOSURES AND PARTIAL RAMP CLOSURES
- 11 TRAFFIC CONTROL AND PROTECTION FOR SIDE ROADS, INTERSECTIONS AND DRIVEWAYS
- 12 TRAFFIC CONTROL AND PROTECTION AND TURN BAYS (TO REMAIN OPEN TO TRAFFIC)

STATE STANDARDS

- 701101-01 MULTI-LANE OFF-ROAD OPERATIONS
- 701301-02 LANE CLOSURE 2L, 2W SHORT TIME OPERATIONS
- 701601-04 URBAN LANE CLOSURE, MULTILANE, 1W OR 2W WITH NONTRAVERSABLE MEDIAN
- 702001-00 TRAFFIC CONTROL DEVICES

GENERAL NOTES

IT SHALL BE THE CONTRACTOR'S RESPONSIBILITY TO VERIFY ALL DIMENSIONS & CONDITIONS EXISTING IN THE FIELD PRIOR TO CONSTRUCTION & ORDERING OF MATERIALS.

THE CONTRACTOR WILL NOT BE ALLOWED TO SET UP A YARD OR FIELD OFFICE ON STATE PROPERTY WITHOUT WRITTEN PERMISSION FROM THE DEPARTMENT.

THE CONTRACTOR SHALL CONTACT THE DISTRICT ONE TRAFFIC CONTROL SUPERVISOR AT (847) 705-4470 A MINIMUM OF 72 HOURS IN ADVANCE OF BEGINNING WORK.

WHEN ARTIFICIAL LIGHTING IS UTILIZED IN NIGHT OPERATIONS, THE CONTRACTOR SHALL EXERCISE THE UTMOST PRECAUTIONS IN PREVENTING ADVERSE VISIBILITY TO THE MOTORING PUBLIC AND ADJOINING RESIDENTIAL AREA.

IT SHALL BE THE CONTRACTORS RESPONSIBILITY TO PROTECT AND MAINTAIN THE EXISTING BRIDGE LIGHTING AT ALL LOCATIONS.

THE CONTRACTOR SHALL BE REQUIRED TO PROVIDE ACCESS TO ABUTTING PROPERTY AT ALL TIMES DURING THE CONSTRUCTION OF THIS PROJECT.

DO NOT SCALE PLANS FOR CONSTRUCTION DIMENSIONS.

ILLINOIS DEPARTMENT OF TRANSPORTATION

**INDEX OF SHEETS
STATE STANDARDS
GENERAL NOTES**

ROUTE	SECTION	COUNTY	TOTAL SHEETS	SHEET NUMBER
VARIOUS	2005-047BP	COOK	12	3

Contract 60A22

GENERAL NOTES FOR PAINT

CLEANING AND PAINTING OF THE EXISTING STRUCTURAL STEEL SHALL BE AS SPECIFIED IN THE SPECIAL PROVISION FOR "CLEANING AND PAINTING EXISTING STEEL STRUCTURES".

A MINIMUM OF FOUR (4) [AT LOCATIONS 1,2,3~~4~~] AND TWO (2) [AT LOCATION 6] AIR MONITORS WILL BE REQUIRED TO MONITOR ABRASIVE BLASTING OPERATIONS PER LOCATION, SEE SPECIAL PROVISIONS FOR CONTAINMENT AND DISPOSAL OF LEAD PAINT CLEANING RESIDUE.

THE SSPC-QP1 AND SSPC-QP2 PAINTING CONTRACTOR CERTIFICATIONS WILL BE REQUIRED FOR THESE BRIDGES.

THE AREAS DESIGNATED TO BE CLEANED PER NEAR WHITE BLAST CLEANING SSPC-SP10 AND PER POWER TOOL CLEANED-COMMERCIAL GRADE SHALL BE PAINTED ACCORDING TO THE REQUIREMENTS OF PAINT SYSTEM 1 - OZ/E/U. THE AREAS DESIGNATED TO BE CLEANED PER POWER TOOL CLEANING-MODIFIED SSPC-SP3 SHALL BE PAINTED ACCORDING TO THE REQUIREMENTS FOR PAINT SYSTEM 2-PS/EM/U (INTERMEDIATE & TOP COAT ONLY). THE COLOR OF THE FINAL FINISH COAT FOR ALL RAILINGS AND INTERIOR STEEL SURFACES SHALL BE GRAY, MUNSELL NO 5B 7/1. THE COLOR OF THE FINAL FINISH COAT FOR THE EXTERIOR AND BOTTOM FLANGE OF THE FASCIA BEAMS SHALL BE REDDISH BROWN, MUNSELL NO 2.5YR 3/4.

ALL ITEMS (SUCH AS, BUT NOT LIMITED TO; CONDUITS, BRACKETS AND DECK DRAINS) ATTACHED TO THE OUTSIDE OF THE FASCIA BEAMS SHOULD BE CLEANED AND PAINTED.

LOCATION 1, 2, & 3 (SNs 016-2812, 016-2529, 016-2530 & 016-0680): ALL EXISTING RAILINGS (SEE SHEET #6 FOR TYPICAL SECTION) SHALL BE CLEANED PER NEAR WHITE BLAST CLEANING SSPC-SP10.

LOCATION 4 (SN 016-2025): ALL BEAMS, BEARINGS, RAILINGS & OTHER STRUCTURAL STEEL SHALL BE CLEANED PER NEAR WHITE BLAST CLEANING SSPC-SP10.

LOCATION 5 (SN 016-2786): ALL BEAMS, BEARINGS & OTHER STRUCTURAL STEEL HAVE BEEN PREVIOUSLY COATED WITH AN INORGANIC ZINC PRIMER AND SHALL BE CLEANED PER POWER TOOL CLEANING-MODIFIED SSPC-SP3.

LOCATION 6 (SN 016-0530,): BEAMS 1, 2, 13, 14, AND THEIR ATTACHED DIAPHRAGMS & BEARINGS, HAVE BEEN PREVIOUSLY COATED WITH AN INORGANIC ZINC PRIMER AND SHALL BE CLEANED PER POWER TOOL CLEANING-MODIFIED SSPC-SP3. BEAMS 3 & 12 SHALL BE CLEANED PER NEAR WHITE BLAST CLEANING SSPC-SP10. ALL REMAINING BEAMS, BEARINGS AND OTHER STRUCTURAL STEEL WITHIN FIVE (5) FT. (MEASURED ALONG THE BEAM) OF EITHER SIDE OF THE DECK JOINTS SHALL BE CLEANED PER NEAR WHITE BLAST CLEANING SSPC-SP10.

ILLINOIS DEPARTMENT OF TRANSPORTATION

GENERAL PAINT NOTES

Rev.

ROUTE	SECTION	COUNTY	TOTAL SHEETS	SHEET NUMBER
VARIOUS	2005-047BP	COOK	12	4

Contract 60A22

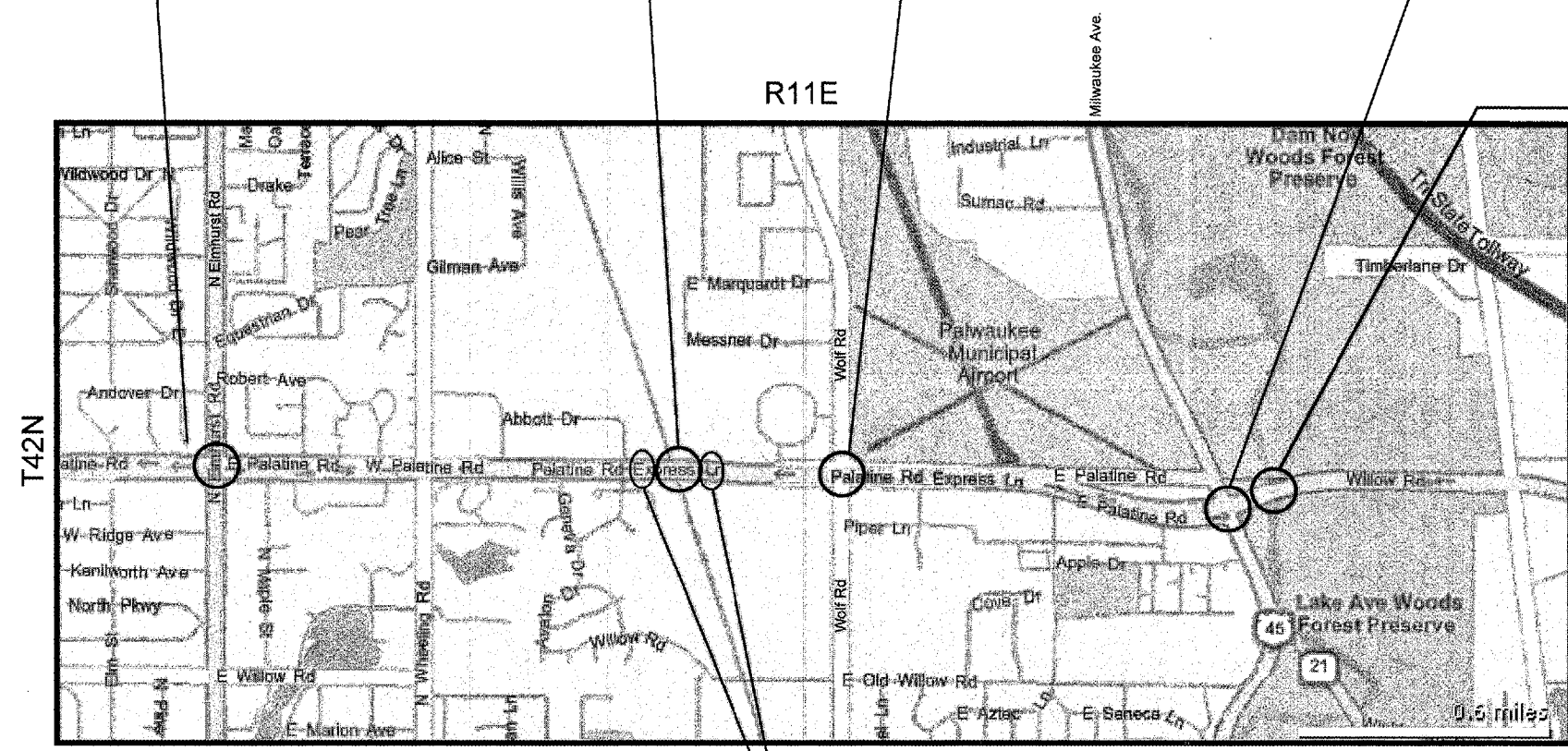
LOCATION 1
 HAND RAILS ON RETAINING WALLS ADJACENT TO SN 016-2812 PALATINE RD OVER IL 83(ELMHURST RD) 2002 ADT = 31,800 SPEED LIMIT = 45 MPH

LOCATION 4
 016-2025 PALATINE RD UNDER WCRR (EASTMOST RR STRUCTURE) 2002 ADT = 31,800 SPEED LIMIT = 55 MPH

LOCATION 3
 HANDRAILS ON RETAINING WALLS ADJACENT TO SN 016-0680 PALATINE RD UNDER WOLF ROAD 2002 ADT = 41,600 SPEED LIMIT = 55 MPH

LOCATION 5
 SN 016-2786 PALATINE RD OVER US 45/IL 21 (MILWAUKEE AVE.) 2002 ADT = 47,900 SPEED LIMIT = 55 MPH

LOCATION 6
 SN 016-0530 PALATINE OVER DES PLAINES RIVER 2002 ADT = 47,900 SPEED LIMIT = 55 MPH



LOCATION 2
 HANDRAILS ON RETAINING WALLS ADJACENT TO SN 016-2529 (E FRONTAGE RD) & SN 016-2530 (W FRONTAGE RD) OVER PALATINE RD 2002 ADT = 31800 SPEED LIMIT = 55 MPH FRONTAGE RD 1997 ADT = 5009 (ONE WAY) SPEED LIMIT = 35 MPH

ILLINOIS DEPARTMENT OF TRANSPORTATION
 LOCATION MAPS

ROUTE	SECTION	COUNTY	TOTAL SHEETS	SHEET NUMBER
VARIOUS	2005-047BP	COOK	12	5

CONTRACT: 60A22

SUMMARY OF QUANTITIES

Code No.	Description	Unit	URBAN 100% STATE Total Quantities	CONSTRUCTION TYPE CODE: SFTY - 2A						
				LOCATION 1 016-2812	LOCATION 2 016-2530 & 061-2592	LOCATION 3 016-0680	LOCATION 4 016-2025	LOCATION 5 016-2786	LOCATION 6 016-0530	
50606701	CLEANING AND PAINTING STRUCTURAL STEEL, LOCATION 1	L SUM	1	1						
50606702	CLEANING AND PAINTING STRUCTURAL STEEL, LOCATION 2	L SUM	1		1					
50606703	CLEANING AND PAINTING STRUCTURAL STEEL, LOCATION 3	L SUM	1			1				
50606704	CLEANING AND PAINTING STRUCTURAL STEEL, LOCATION 4	L SUM	1				1			
50606705	CLEANING AND PAINTING STRUCTURAL STEEL, LOCATION 5	L SUM	1					1		
50606706	CLEANING AND PAINTING STRUCTURAL STEEL, LOCATION 6	L SUM	1						1	
50606400	CONTAINMENT AND DISPOSAL OF LEAD PAINT CLEANING RESIDUES	L SUM	1	0.1	0.2	0.1	0.2			0.4
67000400	ENGINEER'S FIELD OFFICE, TYPE A	CAL MO	6	1	1	1	1	1	1	1
67100100	MOBILIZATION	L SUM	1	0.16	0.16	0.17	0.17	0.17	0.17	0.17
70102630	TRAFFIC CONTROL AND PROTECTION, STANDARD 701601	L SUM	1	0.16	0.16	0.17	0.17	0.17	0.17	0.17
X0322467	TEMPORARY INFORMATION SIGNING FOR LANE CLOSURE	SQ FT	432	96	96	96	48	48	48	48
Z0048665	RAILROAD PROTECTIVE LIABILITY INSURANCE	L SUM	1				1			

ILLINOIS DEPARTMENT OF TRANSPORTATION

SUMMARY OF QUANTITIES

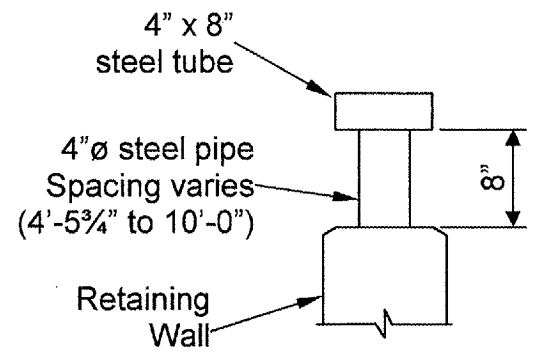
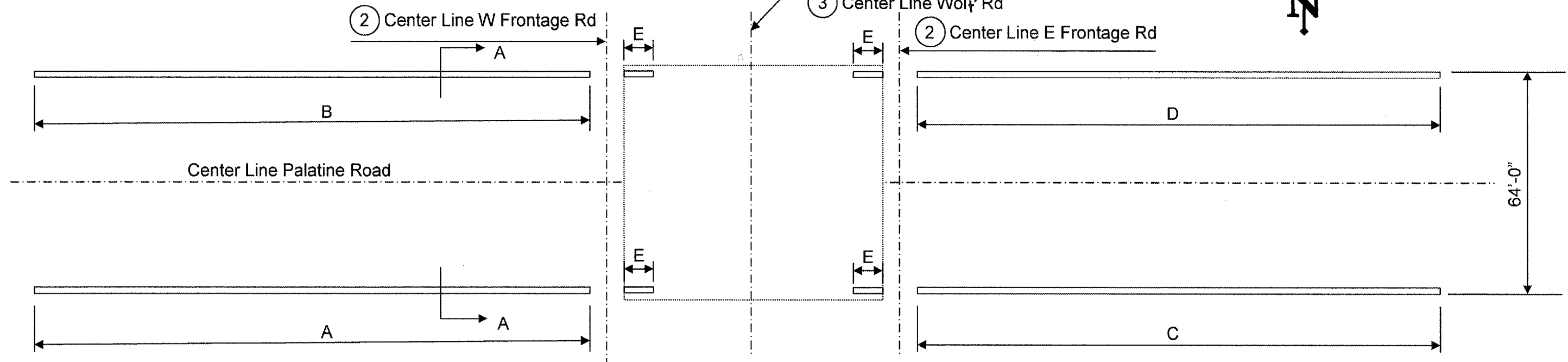
Rev.

ROUTE	SECTION	COUNTY	TOTAL SHEETS	SHEET NUMBER
PALATINE ROAD	2005-047BP	COOK	12	6

CONTRACT: 60A22



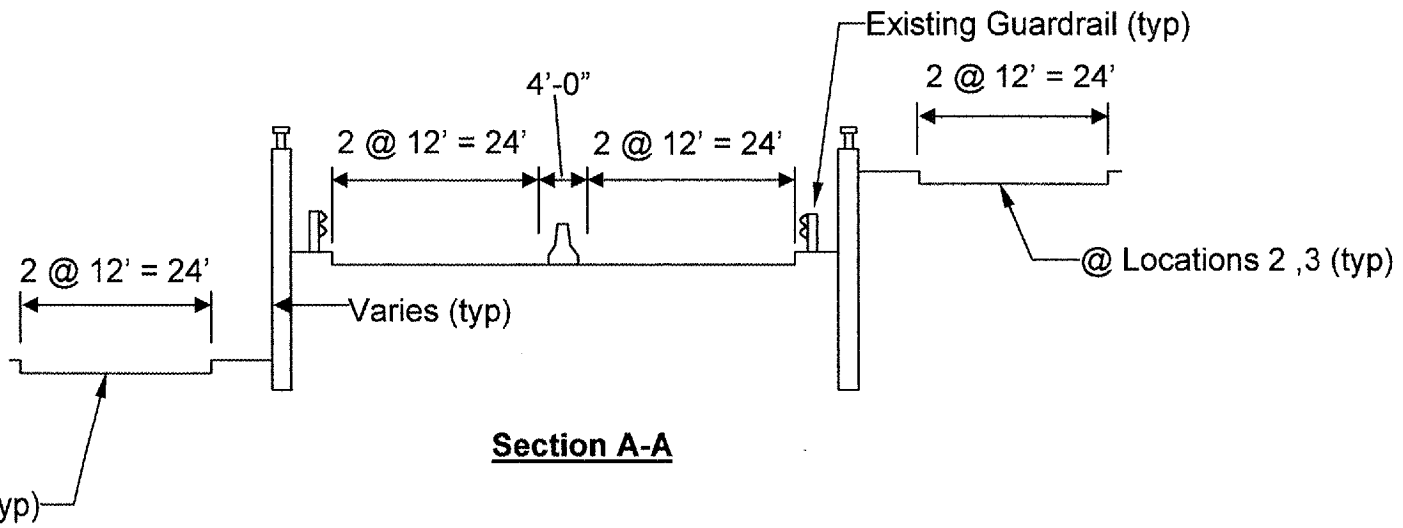
- ① Center Line IL 83 (Elmhurst Rd)
- ② Center Line WCRR Structures
- ③ Center Line Wolf Rd



Typical Railing Section

Location	Structure	SN	Length of Handrail (ft)					Total
			A	B	C	D	E*	
1	@Palatine Rd over IL 83	016-2812	598'-3"	598'-3"	840'-0"	840'-0"	0	2876'-6"
2	@ Palatine Rd under Frontage Rds	016- 2530, 2529	847'-0"	847'-0"	635'-4"	639'-7"	200'-0"	3168'-11"
3	@ Palatine Rd under Wolf Rd	016-0680	582'-1"	421'-11"	795'-8"	505'-3"	0	2304'-11"
								8421 ft

*E = Extension of Retaining Walls Between Frontage Rd Bridges & RR Bridges



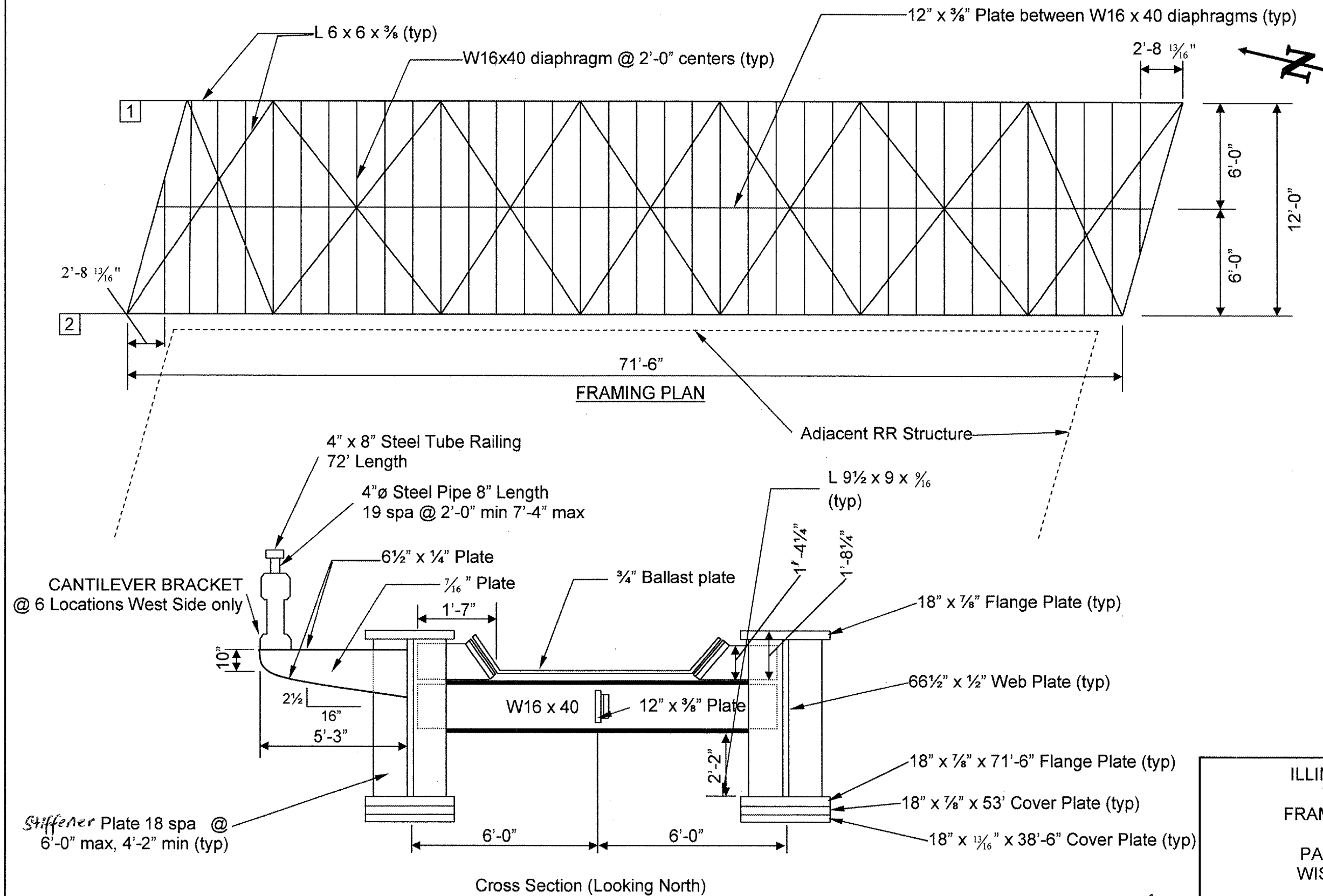
Section A-A

ILLINOIS DEPARTMENT OF
TRANSPORTATION
RAILING DETAILS
Locations 1, 2 & 3
SN: 016-2812, 016-2530, 016-2529
& 016-0680

REV

ROUTE	SECTION	COUNTY	TOTAL SHEETS	SHEET NUMBER
Palatine Rd	2005-047BP	Cook	12	7

CONTRACT: 60A22

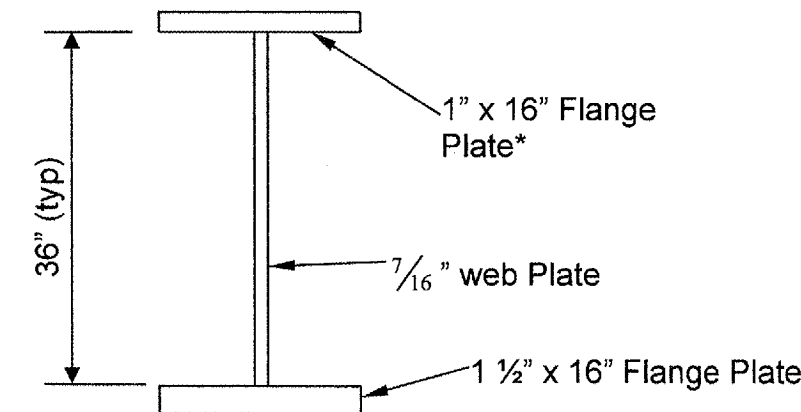
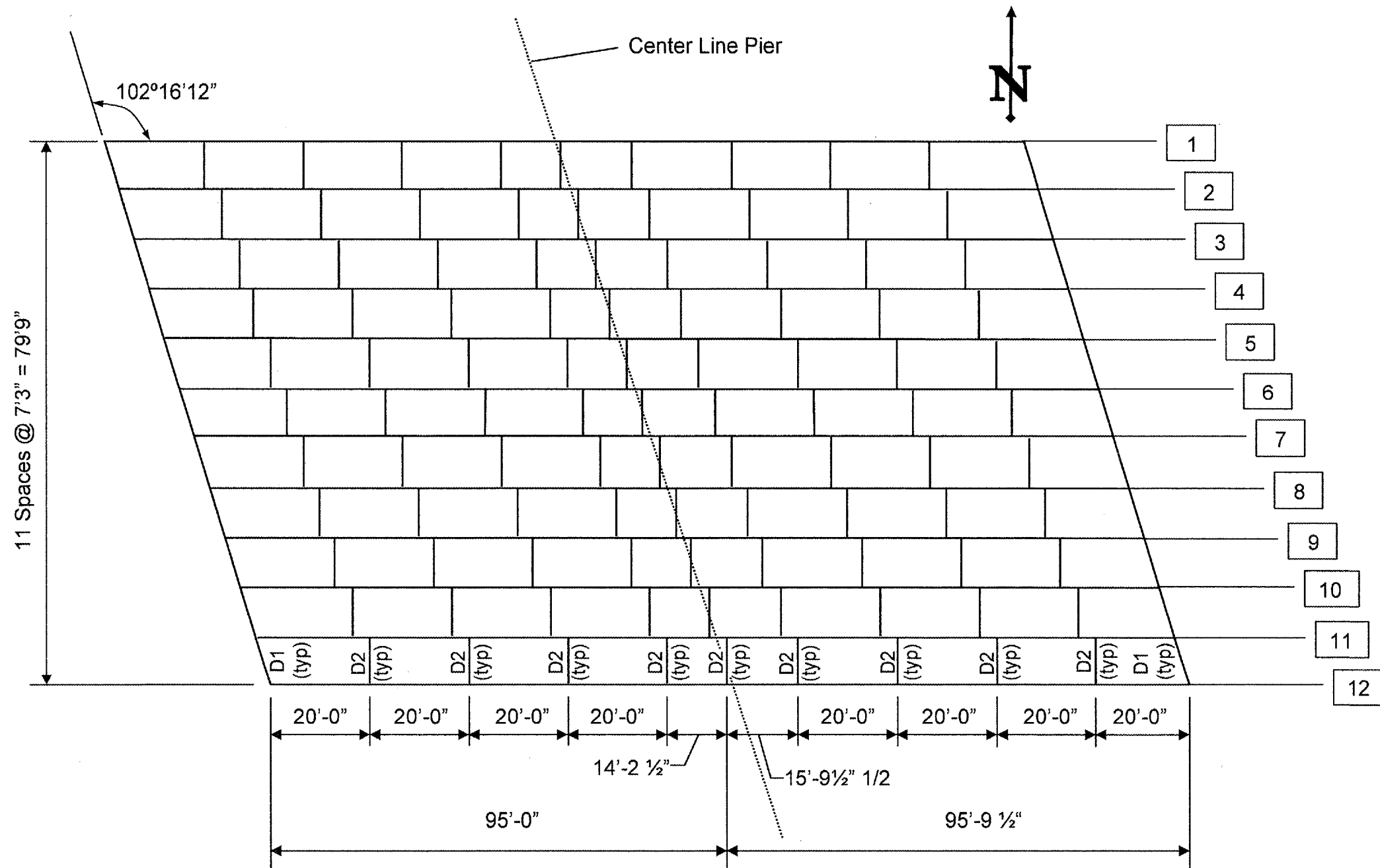


ILLINOIS DEPARTMENT OF
TRANSPORTATION
FRAMING PLAN LOCATION 4
SN: 016-2025
PALATINE ROAD UNDER
WISCONSIN CENTRAL RR

Rev.

ROUTE	SECTION	COUNTY	TOTAL SHEETS	SHEET NUMBER
Palatine Rd	2005-047BP	Cook	12	8

CONTRACT: 60A22

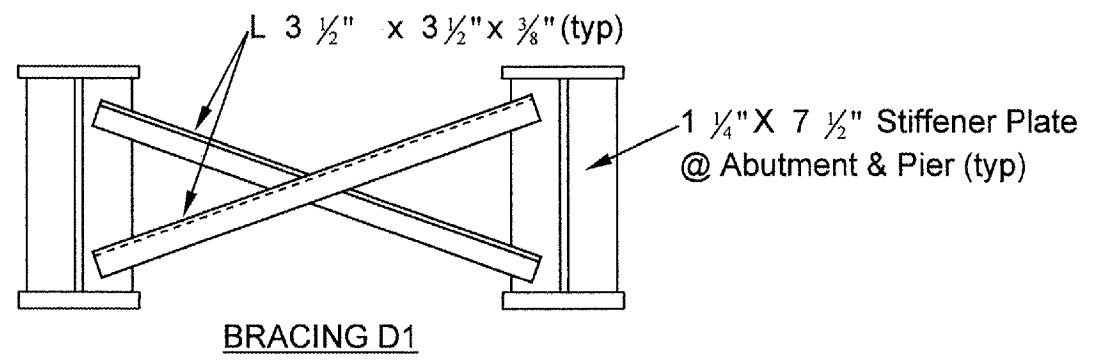


* Top Plate thickness increases to 1 1/2" in 36' section over pier.
1 1/4" x 7 1/2" Stiffener Plate located over abutments and pier.

TYPICAL BEAM SECTION

Diaphragm D2 = W18 x 48

All Structural Steel Has Zinc Primer Only

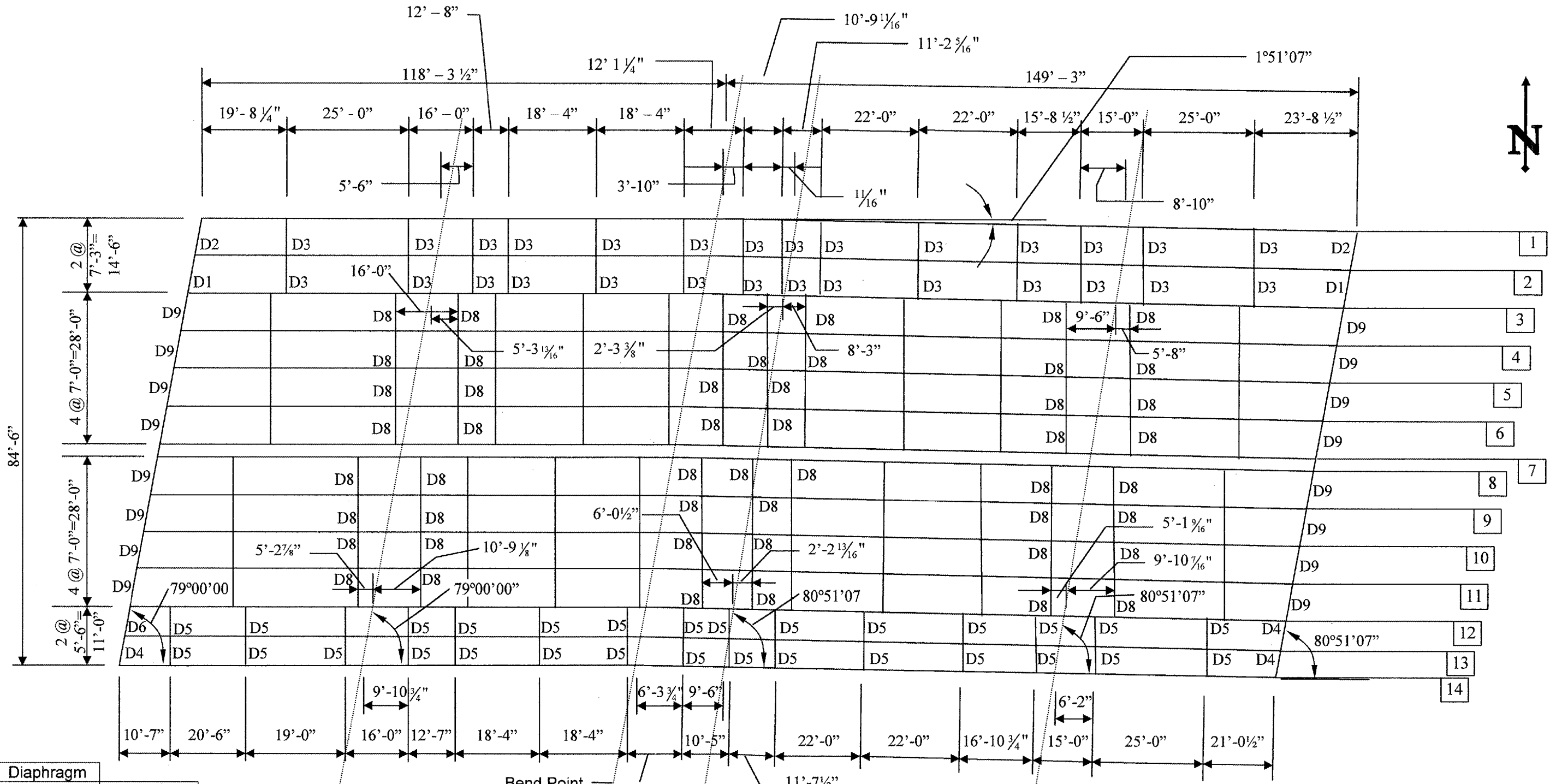


ILLINOIS DEPARTMENT OF
TRANSPORTATION
FRAMING PLAN LOCATION 5
SN: 016-2786
PALATINE ROAD OVER
MILWAUKEE AVE (IL RTE. 21/U.S. 45)

Rex

ROUTE	SECTION	COUNTY	TOTAL SHEETS	SHEET NUMBER
Palatine Rd	2005-047BP	Cook	12	9

CONTRACT: 60A22



Diaphragm	
D1	W12x40
D2	W12x40
D3	W16x36
D4	W12x40
D5	W16x36
D6	W12x40
D8	C15x33.9
D9	W12x65

Beams	
1 & 2	W36x194
3 - 14	W36x160

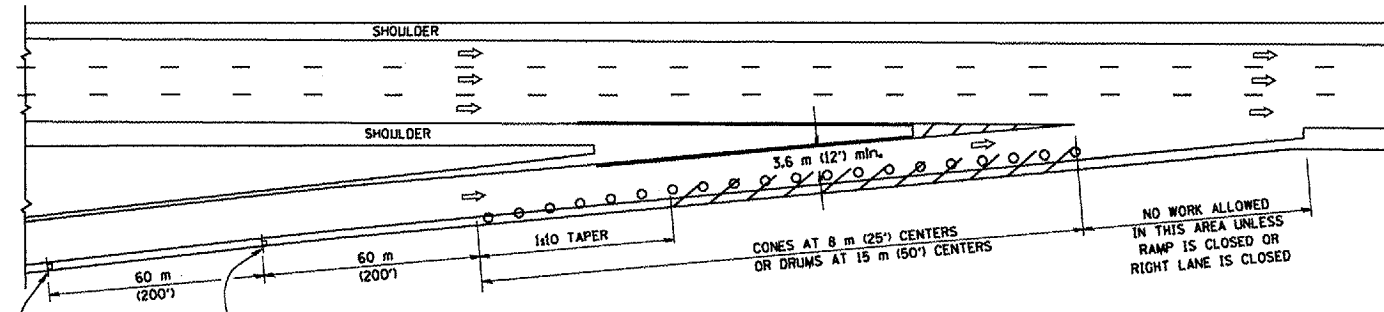
Beams 1, 2, 13, 14 & Diaphragms D1 thru D6 & Bearings Were Added in 2005 and Have Zinc Primer Only.

ILLINOIS DEPARTMENT OF
TRANSPORTATION
FRAMING PLAN LOCATION 6
SN: 016-0530
PALATINE ROAD OVER
DES PLANES RIVER

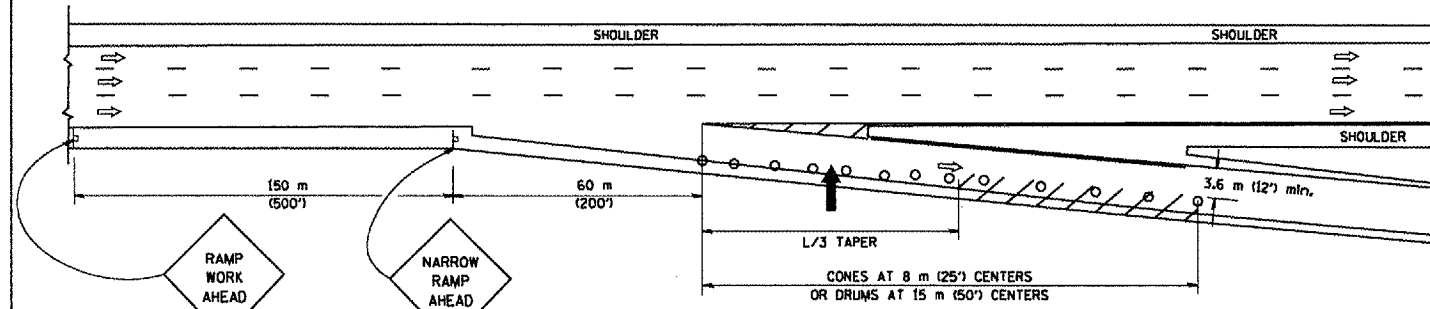
PARTIAL RAMP CLOSURE DETAILS

SHOULDER CLOSURE DETAILS

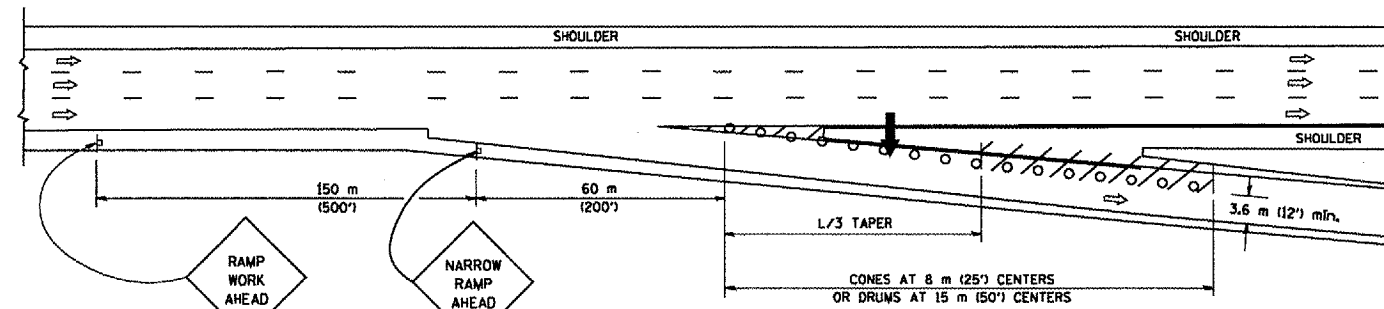
F.A.P. RTE.	SECTION	COUNTY	TOTAL SHEETS	SHEET NO.
305	2005-0478P	COOK	12	10
STA.		TO STA.		
FED. ROAD DIST. NO.		ILLINOIS FED. AID PROJECT		



TYPICAL ENTRANCE RAMP



TYPICAL EXIT RAMP



TYPICAL EXIT RAMP

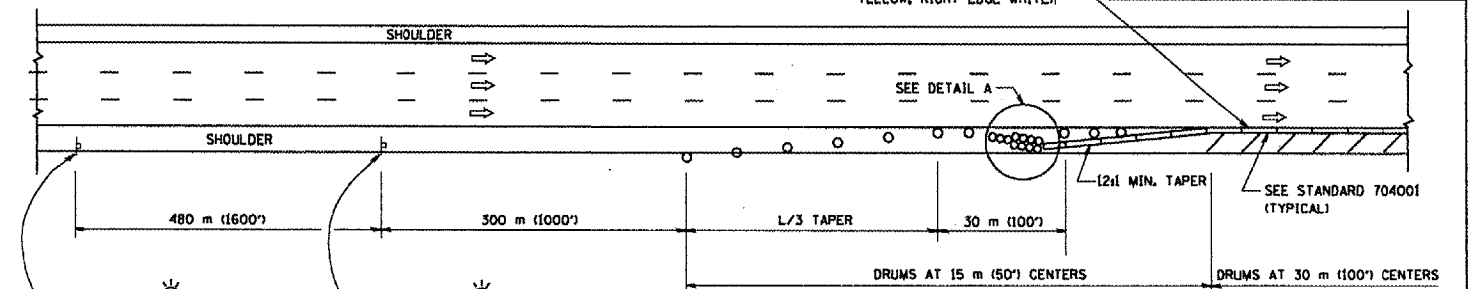
SYMBOLS

- ARROWBOARD
- WORK AREA
- SIGN ON PORTABLE OR PERMANENT SUPPORT
- FLAGGER WITH CONTROL SIGN
- DRUM WITH MONO-DIRECTIONAL STEADY BURNING LIGHT
- CONES - 700 (28) IN HEIGHT

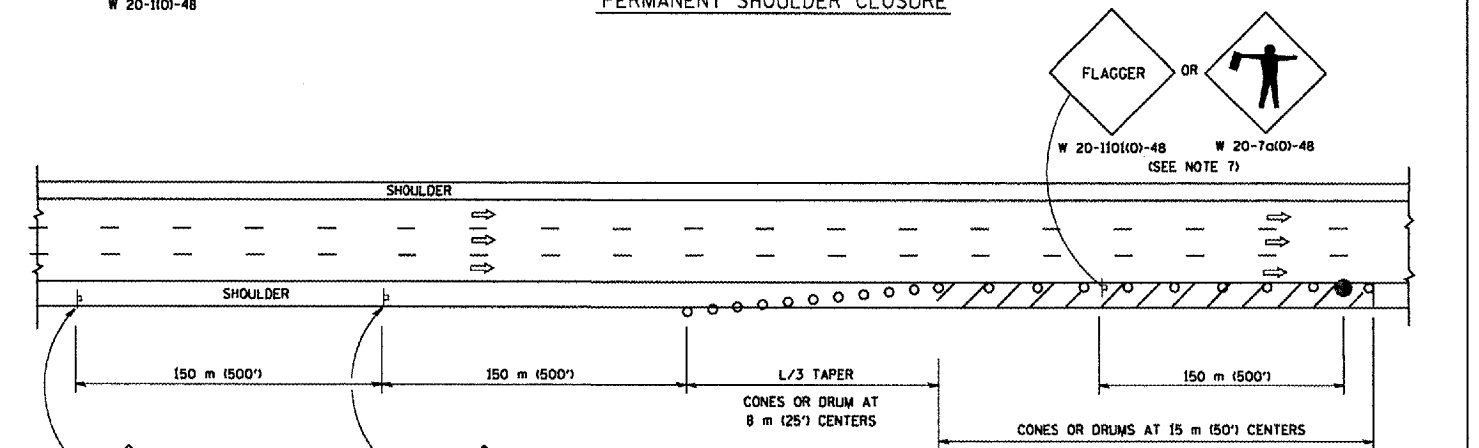
GENERAL NOTES

- THE "L" DISTANCE EQUALS:

SPEED LIMIT	FORMULAS
80 km/h (45 mph) OR GREATER	METRIC: $L=0.65(W)S$ ENGLISH: $L=(W)S$
W = WIDTH OF OFFSET IN METERS (FEET)	S = NORMAL POSTED SPEED KM/H (MPH)
- PLASTIC DRUMS WITH HIGH PERFORMANCE REFLECTIVE SHEETING AND STEADY BURNING LIGHTS ARE REQUIRED FOR ALL NIGHTTIME CLOSURES.
- ALL SIGNS SHALL BE POST MOUNTED IF THE CLOSURE TIME EXCEEDS FOUR DAYS.
- FLASHING LIGHTS SHALL BE USED DURING THE HOURS OF DARKNESS AND SHALL BE INSTALLED ABOVE THE FIRST TWO SETS OF SIGNS.

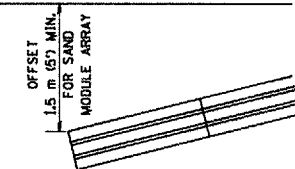


PERMANENT SHOULDER CLOSURE



DAYTIME SHOULDER CLOSURE

ARRAY DESIGN PER MANUFACTURER TO BE NCHRP 350 COMPLIANT FOR POSTED SPEED.



DETAIL "A" IMPACT ATTENUATOR, TEMPORARY (SEE NOTE 5)

- THE IMPACT ATTENUATOR, TEMPORARY IS NOT REQUIRED WHEN THE TEMPORARY CONCRETE BARRIER WALL IS PROTECTED BY OR IS TIED INTO THE EXISTING GUARDRAIL. IF OFFSET IS LESS THAN 5 FEET USE "TRAFFIC BARRIER TERMINAL, TYPE III, TEMPORARY" DEVICE TO MEET NCHRP350 FOR POSTED SPEED.
- AUTHORIZATION FROM THE DISTRICT'S BUREAU OF TRAFFIC IS REQUIRED FOR ALL FREEWAY CLOSURES.
- THE FLAGGER AND FLAGGER SIGN ARE REQUIRED AT THE ABOVE WORK SITES WHEN:
 - FOUR OR MORE WORK VEHICLES ENTER THE TRAFFIC LANES IN A ONE HOUR PERIOD.
 - THE WORK ACTIVITY REQUIRES FREQUENT ENCRDACHMENT INTO THE LANE OPEN TO TRAFFIC.
 THE FLAGGER SHALL BE STATIONED APPROXIMATELY 30 m (100') TO 60 m (200') IN ADVANCE OF THE WORKERS.

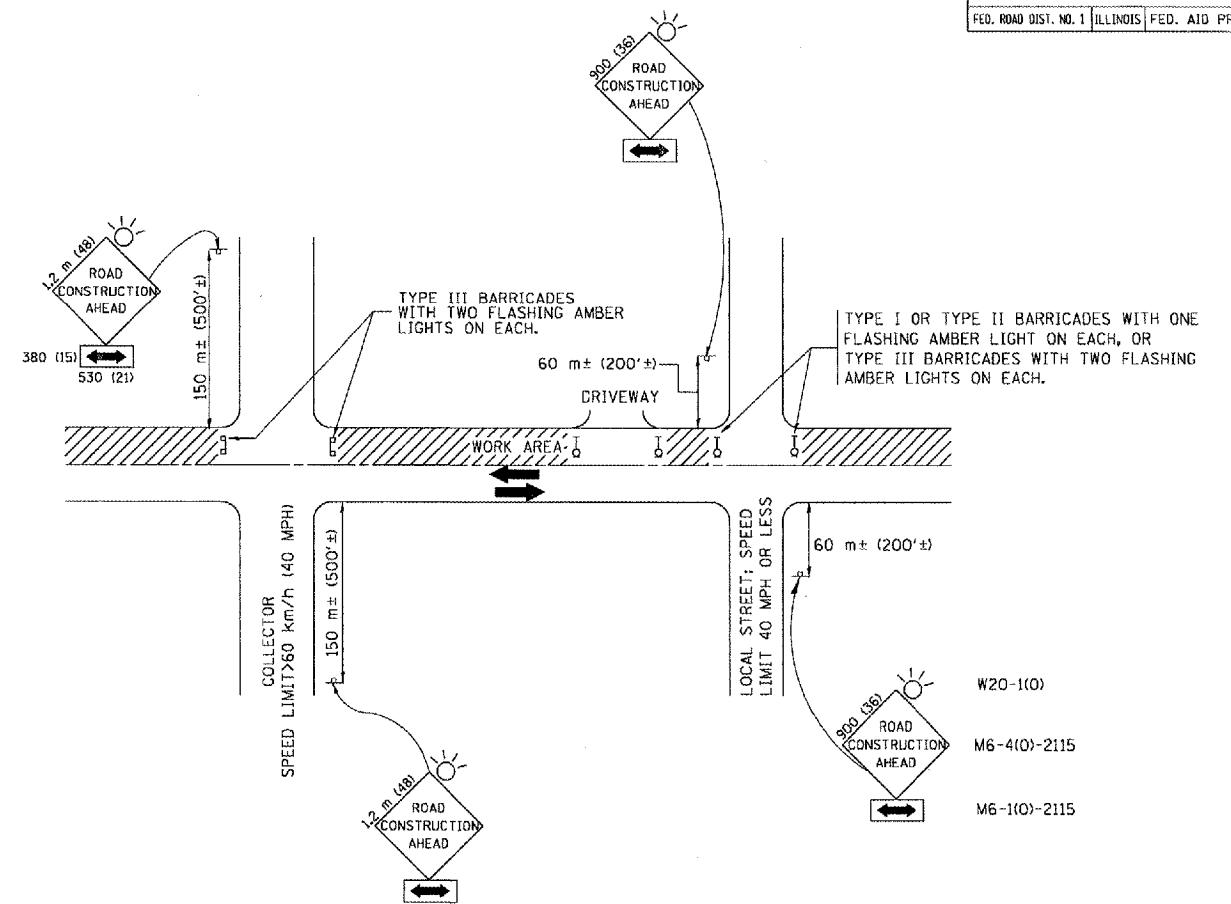
ALL DIMENSIONS ARE IN MILLIMETERS (INCHES) UNLESS OTHERWISE SHOWN.

REVISIONS	
NAME	DATE
DWS	11/96
JAF	12/02
NCHRP 350	04/03
JAF	2/06

ILLINOIS DEPARTMENT OF TRANSPORTATION
TRAFFIC CONTROL DETAILS FOR FREEWAY SHOULDER CLOSURES PARTIAL RAMP CLOSURES
 DESIGNED BY: DWS
 DRAWN BY:
 CHECKED BY:
 TC-17

PLOT DATE: 3/1/2006
 FILE NAME: K:\GIS\ASST\1017.dwg
 PLOT SCALE: 1:1
 USER NAME: lryse

F.A.P. RTE.	SECTION	COUNTY	TOTAL SHEETS	SHEET NO.
305	2005-047BP	COOK	12	11
STA.		TO STA.		
FED. ROAD DIST. NO. 1		ILLINOIS FED. AID PROJECT		



TRAFFIC CONTROL AND PROTECTION FOR SIDE ROADS, INTERSECTIONS, AND DRIVEWAYS

NOTES:

A. FOR NO LANE RESTRICTION ON THE SIDE ROAD OR DRIVEWAYS

- SIDE ROAD WITH A SPEED LIMIT OF 60 km/h (40 MPH) OR LESS AS SHOWN ON THE DRAWING AND AS DIRECTED BY THE ENGINEER:
 - ONE ROAD CONSTRUCTION AHEAD SIGN 900x900 (36x36) WITH A FLASHER AND FLAG MOUNTED ON IT APPROXIMATELY 60 m (200') IN ADVANCE OF THE MAIN ROUTE.
 - THE CLOSED PORTION OF THE MAIN ROUTE SHALL BE PROTECTED BY BLOCKING WITH TYPE I, TYPE II OR TYPE III BARRICADES, 1/3 OF THE CROSS SECTION OF THE CLOSED PORTION.
- SIDE ROAD WITH A SPEED LIMIT GREATER THAN 60 km/h (40 MPH) AS SHOWN ON THE DRAWING AND AS DIRECTED BY THE ENGINEER:
 - ONE ROAD CONSTRUCTION AHEAD SIGN 1.2 m x 1.2 m (48x48) WITH A FLASHER MOUNTED ON IT APPROXIMATELY 150 m (500') IN ADVANCE OF THE MAIN ROUTE.
 - THE CLOSED PORTION OF THE MAIN ROUTE SHALL BE PROTECTED BY BLOCKING WITH TYPE III BARRICADES, 1/2 OF THE CROSS SECTION OF THE CLOSED PORTION.
- WHEN THE SIDE ROAD LIES BETWEEN THE BEGINNING OF THE MAINLINE SIGNING AND THE WORK ZONE, A SINGLE HEADED ARROW (M6-1) SHALL BE USED IN LIEU OF THE DOUBLE HEADED ARROW (M6-4).

B. FOR A LANE CLOSURE ON A SIDE ROAD OR DRIVEWAY:

- USE APPLICABLE PORTIONS OF THE TYPICAL APPLICATION OF TRAFFIC CONTROL DEVICES (STD. 701501, STD. 701605 OR THE APPROPRIATE STANDARD). THE SPACING OF SIGNS AND BARRICADES SHALL BE ADJUSTED FOR FIELD CONDITIONS AS DIRECTED BY THE ENGINEER. THE DIRECTIONAL ARROW SHALL BE COVERED OR REMOVED WHEN NO LONGER CONSISTENT WITH THE SIDE ROAD LANE CLOSURE.
- C. ADVANCE WARNING SIGNS ARE TO BE OMITTED ON DRIVEWAY UNLESS OTHERWISE NOTED.
- D. THE TRAFFIC CONTROL AND PROTECTION FOR SIDE ROADS, INTERSECTIONS, AND DRIVEWAYS SHALL BE INCIDENTAL TO THE COST OF SPECIFIED TRAFFIC CONTROL STANDARDS OR ITEMS.

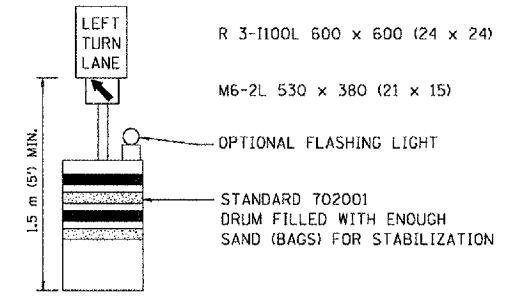
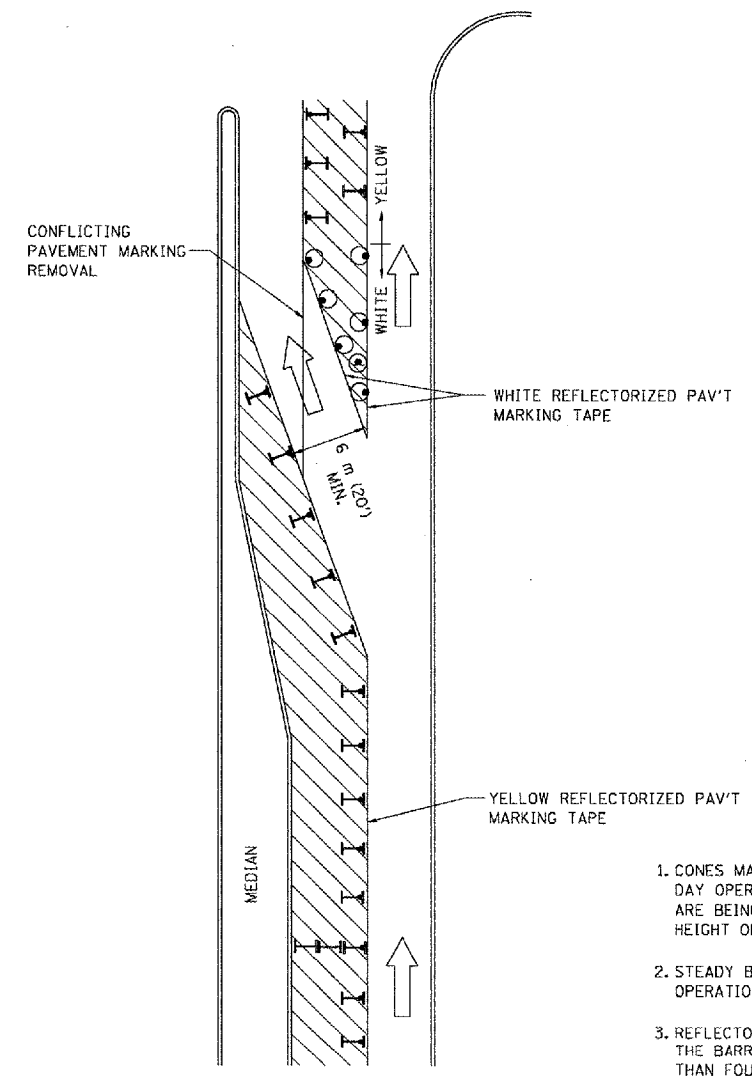
REVISIONS	
NAME	DATE
LHA	6/89
T. RAMMACHER	09/08/94
J. OBERLE	10/18/95
A. HOUSEH	03/06/96
A. HOUSEH	10/15/96
T. RAMMACHER	01/06/00

ILLINOIS DEPARTMENT OF TRANSPORTATION
 TRAFFIC CONTROL AND PROTECTION
 FOR
 SIDE ROADS, INTERSECTIONS, AND
 DRIVEWAYS

SCALE: VERT.
 HORIZ.
 DATE 10/18/2002

DRAWN BY
 CHECKED BY
 TC-10

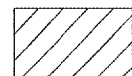
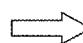




F.A.P. NO.	SECTION	COUNTY	TOTAL SHEETS	SHEET NO.
305	2005-0478P	COOK	12	12
STA.	TO STA.			
FED. ROAD DIST. NO.	ILLINOIS	FED. AID PROJECT		



GENERAL NOTES

1. CONES MAY BE SUBSTITUTED FOR BARRICADES OR DRUMS AT HALF THE SPACING DURING DAY OPERATIONS. CONES SHALL BE A MINIMUM OF 710 (28) IN HEIGHT. WHEN CONES ARE BEING USED, THE "LEFT TURN LANE" SIGN MAY BE SKID MOUNTED AT A MINIMUM HEIGHT OF 1.5 m (5').
2. STEADY BURNING LIGHTS WILL NOT BE REQUIRED ON BARRICADES OR DRUMS FOR DAY OPERATIONS. ALL LIGHTS SHALL BE MONODIRECTIONAL.
3. REFLECTORIZED TEMPORARY PAVEMENT MARKING TAPE SHALL BE PLACED THROUGHOUT THE BARRICADED AREA OF EACH TURN BAY WHERE THE CLOSURE TIME IS GREATER THAN FOURTEEN DAYS.
4. THIS APPLICATION ALSO APPLIES WHEN WORK IS BEING PERFORMED IN THE RIGHT LANE(S) AND THE RIGHT TURN BAY IS TO REMAIN OPEN. UNDER THIS CONDITION, "RIGHT TURN LANE" R3-100 600 x 600 (24 x 24) AND M6-2R 530 x 380 (21 x 15) SHALL BE USED.
5. THESE CONTROLS SHALL SUPPLEMENT MAINLINE TRAFFIC CONTROL FOR LANE CLOSURES.
6. LONGITUDINAL DIMENSIONS MAY BE ADJUSTED TO FIT FIELD CONDITIONS.
7. FORM BT 725 IS REQUIRED.
8. TRAFFIC CONTROL AND PROTECTION AT TURN BAYS (TO REMAIN OPEN TO TRAFFIC) SHALL BE INCLUDED IN THE COST SPECIFIED TRAFFIC CONTROL STANDARDS OR ITEMS.

LEGEND

-  WORK AREA
-  LANE OPEN TO TRAFFIC
-  TYPE I OR II BARRICADE WITH STEADY BURN LIGHT
-  DRUM WITH STEADY BURN LIGHT
-  DRUM WITH SIGN (WITH OPTIONAL FLASHING LIGHT) SEE DETAIL
-  TYPE I OR II CHECK BARRICADE WITH FLASHING LIGHT

All dimensions are in millimeters (inches) unless otherwise shown.

ILLINOIS DEPARTMENT OF TRANSPORTATION
 TRAFFIC CONTROL AND PROTECTION
 AT TURN BAYS
 (TO REMAIN OPEN TO TRAFFIC)

REVISIONS	
NAME	DATE
T. RAMMACHER	09/08/94
A. HOUSEH	11/07/95
A. HOUSEH	10/12/96
T. RAMMACHER	01/06/00

SCALE: NONE
 DATE: 10/18/2002
 DRAWN BY: LHA
 CHECKED BY: LHA
 TC-14