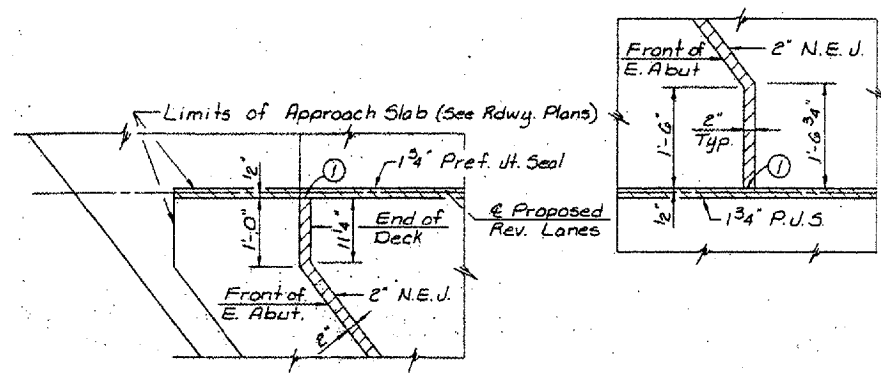
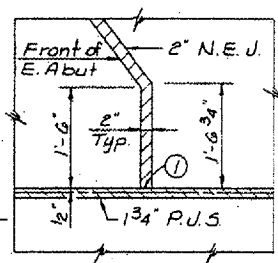


ROUTE	SECTION	COUNTY	TOTAL SHEETS	SHEET NUMBER
I-90/94	2006-0101	COOK	16	7

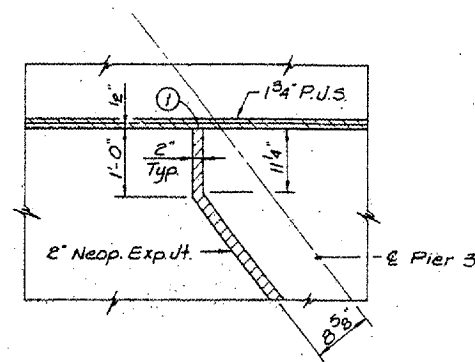
CONTRACT NO: 60B33
Sh 4 of 4



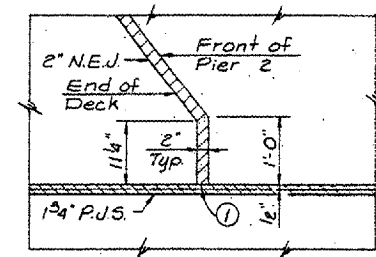
DETAIL "M"



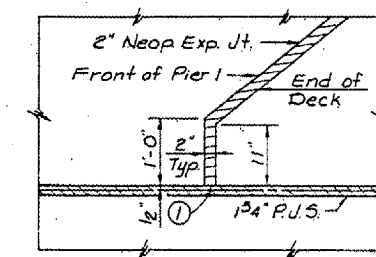
DETAIL "N"



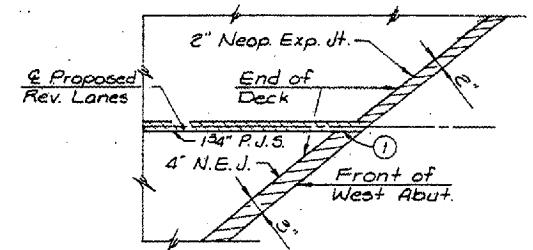
DETAIL "O"



DETAIL "P"



DETAIL "Q"



DETAIL "R"

* P.J.S. DENOTES EXSITING PERFORMED JOINT SEAL → REPLACE WITH SILICONE SEAL
(SEE DETAIL B IN SH 3 OF 4)

N.E.J. DENOTES EXSITING NEOPRENE EXPANSION JOINT → REPLACE WITH SILICONE SEAL
(SEE DETAIL A IN SH 3 OF 4)

ILLINOIS DEPARTMENT OF
TRANSPORTATION
BRIDGE PLAN
I-90/94 OVER KEDZIE & BELMONT
LOC. 1 (SN 016-0121)