

ROUTE	SECTION	COUNTY	TOTAL SHEETS	SHEET NUMBER
FAI 290	2006-0131	COOK	15	1

FOR INDEX OF SHEETS SEE SHEET 3

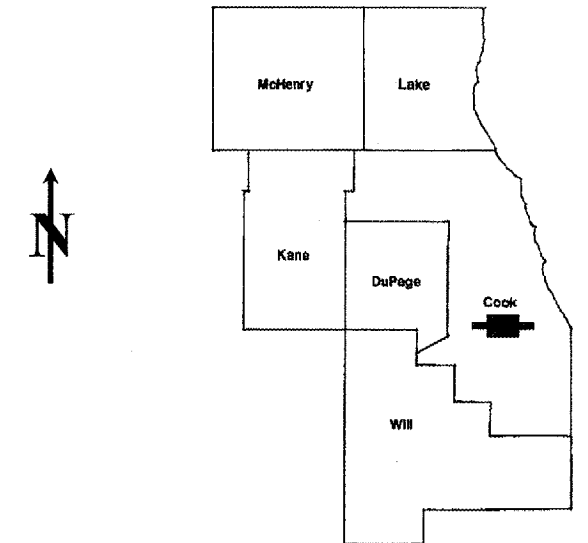
CONTRACT NO. 60B37

STATE OF ILLINOIS
DEPARTMENT OF TRANSPORTATION
DIVISION OF HIGHWAYS
DISTRICT ONE

PROPOSED HIGHWAY PLANS

FAI 290 (EISENHOWER EXPRESSWAY)
VARIOUS STRUCTURES OVER I-290 AND CTA
SECTION: 2006-0131
PERMANENT PROTECTIVE SHIELDING
COOK COUNTY
C-91-327-06

D-91-327-06



LOCATION OF IMPROVEMENT INDICATED THUS:

IMPROVEMENT IS LOCATED IN THE
CITY OF CHICAGO

TRAFFIC DATA: (I - 290)

SPEED LIMIT = 55 MPH

2006 ADT = 220,700

STATE OF ILLINOIS
DEPARTMENT OF TRANSPORTATION
DIVISION OF HIGHWAYS

SUBMITTED: Nov. 2 2006
Diane O'Keefe
DEPUTY DIRECTOR OF HIGHWAYS, REGION ENGINEER

December 8, 2006
Eric E. Ham
Interim ENGINEER OF DESIGN AND ENVIRONMENT

December 8, 2006
Milton R. Sears, P.E.
DIRECTOR, DIVISION OF HIGHWAYS

PRINTED BY THE AUTHORITY
OF THE STATE OF ILLINOIS

C.U.A.N: CHICAGO UTILITY ALERT
NETWORK
(312) 744-7000

CONTRACT NO. 60B37

DISTRICT ONE - DESIGN - PLAN PREPARATION ENGINEER:
KEN ENG / ROBERT BORO (847) 705-4178

ROUTE	SECTION	COUNTY	TOTAL SHEETS	SHEET NUMBER
FAI 290	2006-0131	COOK	15	2

LOCATION 4
Kostner Ave over I-290
SN 016-2066

LOCATION 6
Kedzie Ave over I-290
SN 016-2074

LOCATION 7
Western Ave over I-290
SN 016-2083

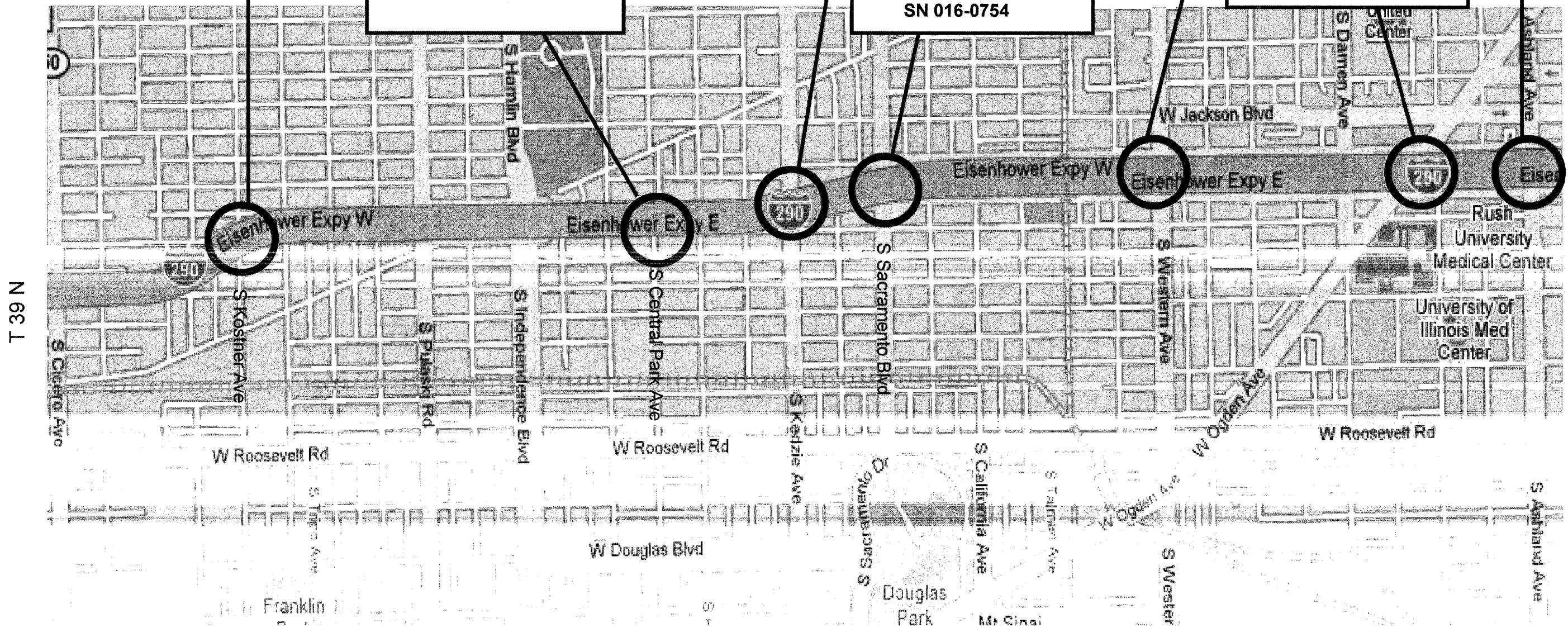
LOCATION 3
Ashland Ave over I-290
SN 016-0783

LOCATION 5
Central Park Ave over I-290
SN 016-2072

R 13 E / R 14 E

LOCATION 2
Sacramento Blvd
over I-290
SN 016-0754

LOCATION 1
Ogden Ave over I-290
SN 016-0235



WEST CHICAGO TOWNSHIP

ILLINOIS DEPARTMENT OF TRANSPORTATION

LOCATION OF MAP

ROUTE	SECTION	COUNTY	TOTAL SHEETS	SHEET NUMBER
FAI 290	2006-13I	COOK	15	3

CONTRACT 60B37

INDEX OF SHEETS

STATE STANDARDS

1	TITLE SHEET	701400 - 02	APPROACH TO LANE CLOSURE, FREEWAY/EXPRESSWAY
2	LOCATION MAP		
3	INDEX OF SHEETS AND STATE STANDARDS	701401 - 03	LANE CLOSURE, MULTILANE, FOR SPEEDS ≥ 45 MPH
4	GENERAL NOTES		
5	SUMMARY OF QUANTITIES	701411 - 03	LANE CLOSURE, MULTILANE AT ENTRANCE OR EXIT RAMP FOR SPEEDS ≥ 45 MPH
6	BRIDGE PLANS (S.N. 016 - 0235, LOCATION 1)		
7	BRIDGE PLANS (S.N. 016 - 0754, LOCATION 2)		
8	BRIDGE PLANS (S.N. 016 - 0783, LOCATION 3)	701446	TWO LANE CLOSURE, FREEWAY/EXPRESSWAY
9	BRIDGE PLANS (S.N. 016 - 2066, LOCATION 4)		
10	BRIDGE PLANS (S.N. 016 - 2072, LOCATION 5)	702001 - 06	TRAFFIC CONTROL DEVICES
11	BRIDGE PLANS (S.N. 016 - 2074, LOCATION 6)		
12	BRIDGE PLANS (S.N. 016 - 2083, LOCATION 7)		
13	PERMANENT PROTECTIVE SHIELDING DETAILS		
14	TRAFFIC CONTROL DETAILS FOR FREEWAY SHOULDER CLOSURES AND PARTIAL RAMP CLOSURES		
	TRAFFIC CONTROL DETAILS FOR FREEWAY CENTER LANE CLOSURE SHOULDER LANE		
15	FREEWAY ENTRANCE AND EXIT RAMP CLOSURE DETAILS		

ILLINOIS DEPARTMENT OF TRANSPORTATION

INDEX OF SHEETS
STATE STANDARDS

Rev.

ROUTE	SECTION	COUNTY	TOTAL SHEETS	SHEET NUMBER
FAI 290	2006-0131	COOK	15	4

GENERAL NOTES

CONTRACT NO. 60B37

BEFORE STARTING ANY EXCAVATION, THE CONTRACTOR SHALL CALL "C.U.A.N." (CHICAGO UTILITY ALERT NETWORK) AT (312)744-7000 FOR FIELD LOCATIONS OF BURIED ELECTRIC, TELEPHONE AND GAS UTILITIES. (48 HOUR NOTIFICATION IS REQUIRED).

DO NOT SCALE PLANS FOR CONSTRUCTION DIMENSIONS

THE CONTRACTOR WILL NOT BE ALLOWED TO SET UP A YARD OR FIELD OFFICE ON STATE PROPERTY WITHOUT WRITTEN PERMISSION FROM THE DEPARTMENT.

THE CONTRACTOR SHALL CONTACT THE DISTRICT ONE TRAFFIC CONTROL SUPERVISOR AT (847) 705-4151 A MINIMUM OF 72 HOURS IN ADVANCE OF BEGINNING WORKS.

THESE PLANS HAVE BEEN PREPARED FROM NOTES RECEIVED FROM BRIDGE INSPECTORS.

THE CONTRACTOR SHALL BE AWARE THAT SOME LOCATIONS HAVE UTILITY CONDUITS. ANY DAMAGE TO THE CONDUITS CAUSED BY THE CONTRACTOR'S OPERATIONS SHALL BE REPLACED OR REPAIRED BY THE CONTRACTOR AT THEIR EXPENSE. THE CONTRACTOR SHALL ADJUST THE PROTECTIVE SHIELDING TO FIT AROUND THE CONDUITS. DETAIL SHALL BE APPROVED BY THE ENGINEER BEFORE INSTALLATION. THE CONTRACTOR SHALL COORDINATE CONSTRUCTION ACTIVITIES WITH THE UTILITY COMPANIES.

IT SHALL BE THE CONTRACTORS RESPONSIBILITY TO VERIFY ALL DIMENSIONS AND CONDITIONS EXISTING IN THE FIELD PRIOR TO CONSTRUCTION AND ORDERING OF MATERIALS.

THE CONTRACTOR SHALL BE REQUIRED TO PROVIDE ACCESS TO ABUTTING PROPERTY AT ALL TIMES DURING THE CONSTRUCTION OF THIS PROJECT.

THE CONTRACTOR SHALL ADJUST THE PROTECTIVE SHIELDING TO RIDE ABOVE THE EXISTING LIGHTING FIXTURES IN ORDER TO MAINTAIN THE EXISTING LEVEL OF LIGHTING OF THE ROADWAY UNDERNEATH. DETAILS SHALL BE APPROVED BY THE ENGINEER BEFORE INSTALLATION.

WHEN ARTIFICIAL LIGHTING IS UTILIZED IN NIGHT OPERATIONS, THE CONTRACTOR SHALL EXERCISE THE UTMOST PRECAUTIONS IN PREVENTING ADVERSE VISIBILITY TO THE MOTORING PUBLIC AND ADJOINING RESIDENTIAL AREAS.

ANY CONDUIT ATTACHED TO THE FLANGE MUST BE RELOCATED PRIOR TO THE INSTALLATION OF THE PROTECTIVE SHIELDING. CONTACT NEIL THAKKAR I BUREAU OF ELECTRICAL AT 847-705-3078. UNDER NO CIRCUMSTANCES SHALL THE PROTECTIVE SHIELDING REST ON TOP OF THE CONDUIT.

<p>ILLINOIS DEPARTMENT OF TRANSPORTATION</p> <p>GENERAL NOTES</p>

Rev.

ROUTE	SECTION	COUNTY	TOTAL SHEETS	SHEET NUMBER
VARIOUS	2006-03I	COOK	15	5

CONTRACT: 60B37

SUMMARY OF QUANTITIES

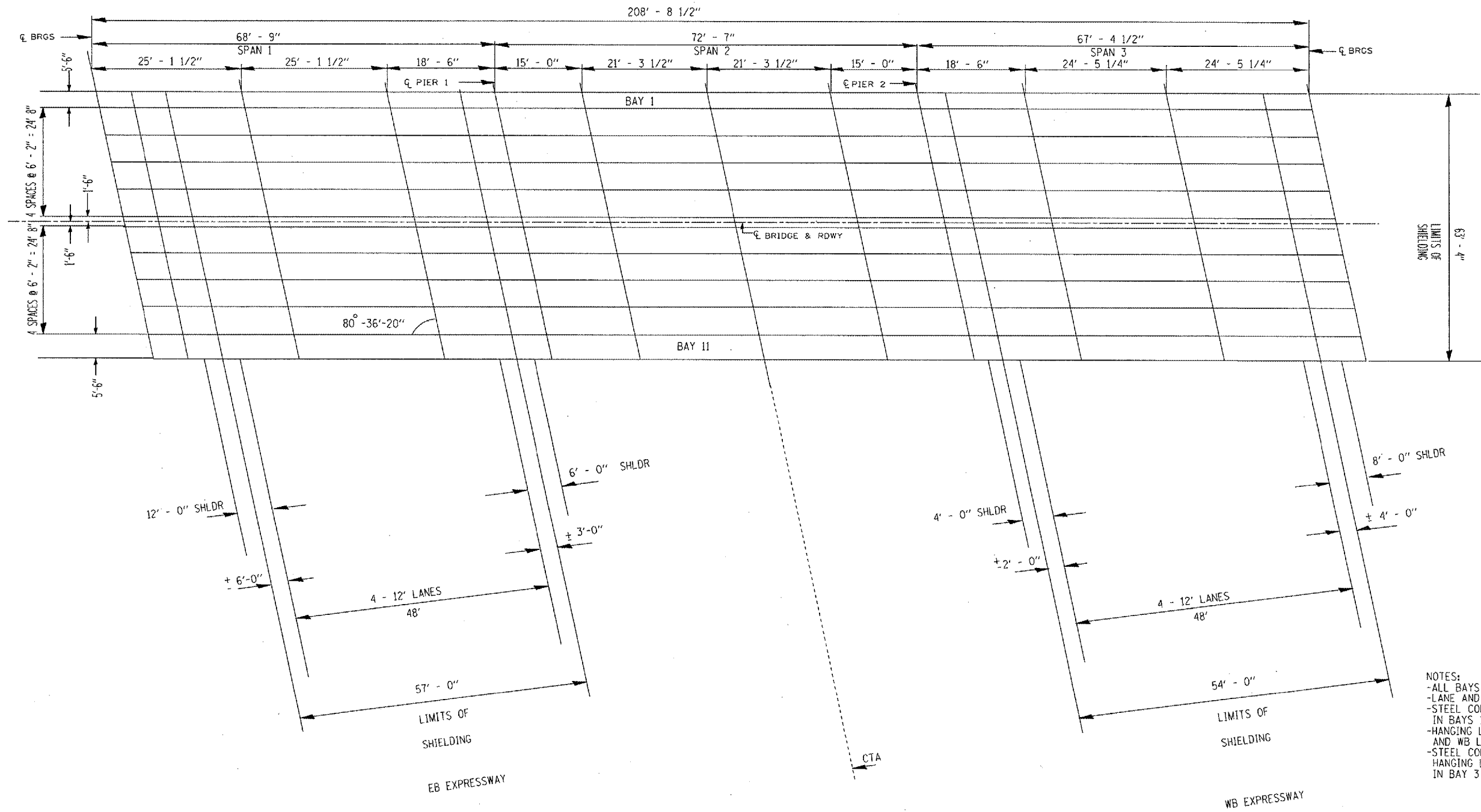
Code No.	Description	Unit	URBAN 100% STATE Total Quantities	CONSTRUCTION TYPE CODE: SFTY - 2A						
				LOC. 1 016-0235	LOC. 2 016-0754	LOC. 3 016-0783	LOC. 4 016-2066	LOC. 5 016-2072	LOC. 6 016-2074	LOC. 7 016-2074
67100100	MOBILIZATION	L SUM	1	0.14		0.14	0.14	0.14	0.15	0.15
X0322066	PROTECTIVE SHIELD (PERMANENT)	SQ YD	7695	1319	792	1109	1116	823	956	1580
X7011015	TRAFFIC CONTROL AND PROTECTION (EXPRESSWAYS)	L SUM	1	0.14	0.14	0.14	0.14	0.14	0.15	0.15
Z0048665	RAILROAD PROTECTIVE LIABILITY INSURANCE	L SUM	1	0.14	0.14	0.14	0.14	0.14	0.15	0.15

ILLINOIS DEPARTMENT OF TRANSPORTATION

SUMMARY OF QUANTITIES

Rev.

F.A. RTE.	SECTION	COUNTY	TOTAL SHEETS	SHEET NO.
290	2006-013 I	COOK	15	7
STA.		TO STA.		
FED. ROAD DIST. NO.	ILLINOIS	FED. AID PROJECT		



FRAMING PLAN

- NOTES:
- ALL BAYS NUMBERED WEST TO EAST
 - LANE AND SHOULDER WIDTHS ARE ESTIMATES
 - STEEL CONDUITS ABOVE DIAPHRAGMS TYPICAL IN BAYS 1 & 11 OVER EB AND WB I-290
 - HANGING LIGHTS TYPICAL IN BAYS 3 & 9 OVER EB AND WB LANE 1 AND RIGHT SHOULDER
 - STEEL CONDUIT ABOVE DIAPHRAGMS AND ALSO HANGING LIGHTS OVER LANE 1 AND THE RIGHT SHOULDER IN BAY 3 OVER WB I-290

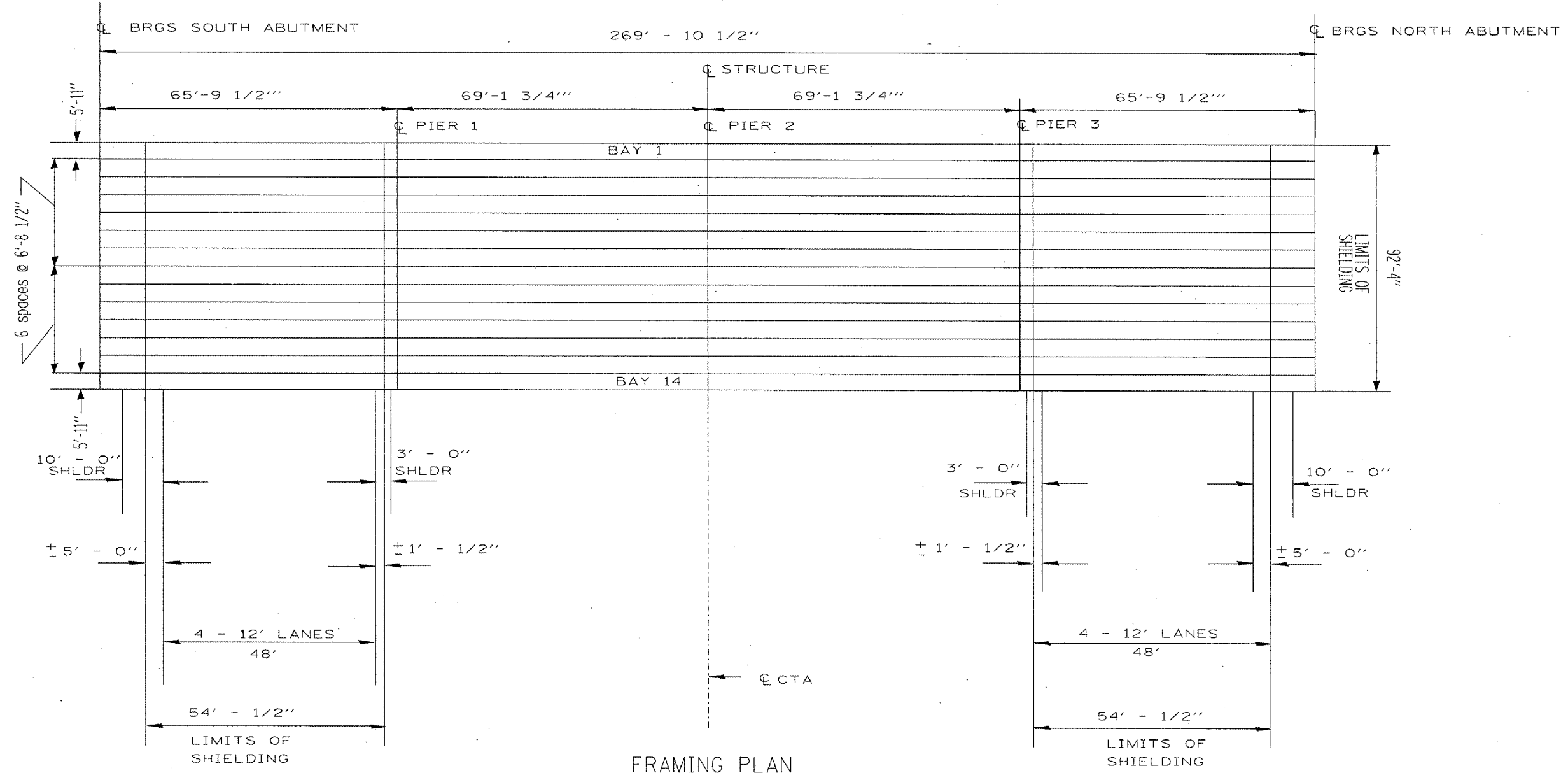
REVISIONS	
NAME	DATE

ILLINOIS DEPARTMENT OF TRANSPORTATION
 STRUCTURE PLAN
 SACRAMENTO BLVD OVER I-290
 LOCATION 2
 SN# 016-0754

SCALE: VERT. DATE
 HORIZ. DATE
 DRAWN BY
 CHECKED BY

PLOT DATE = 12/16/2006
 PLOT SCALE = 62/2000" / IN
 USER NAME = MITCHELL

F.A. RTE.	SECTION	COUNTY	TOTAL SHEETS	SHEET NO.
290	2006-013 I	COOK	15	8
STA.		TO STA.		
FED. ROAD DIST. NO.	ILLINOIS	FED. AID PROJECT		



FRAMING PLAN

EB EXPRESSWAY

WB EXPRESSWAY

- NOTES:
- ALL BAYS NUMBERED WEST TO EAST
 - LANE AND SHOULDER WIDTHS ARE ESTIMATES
 - STEEL CONDUIT ABOVE DIAPHRAGMS IN BAY 1 OVER EB & WB LANES
 - STEEL CONDUIT BELOW DIAPHRAGMS IN BAY 3 OVER THE EB LANES AND IN BAY 5 OVER THE WB LANES
 - HANGING LIGHTS TYPICAL IN BAYS 4, 8 & 11 OVER LANE 1 AND THE RIGHT SHOULDER, BOTH EB AND WB
 - EXISTING SHIELDING IN BAY(S)
 - 6, 7 & 8 OVER EB LANES 3 & 4
 - 6 OVER WB LANES 1, 2 & 3
 - 13 OVER EB LANES 3 & 4.
 - STEEL CONDUIT ABOVE DIAPHRAGMS IN BAY 14 TYPICAL OVER EB & WB LANES
 - BEAM DEPTH DIFFERENTIAL TYPICAL AT BOTH FASCIAS OVER EB AND WB LANES
 - ALL EXISTING SHIEDING SHALL BE REMOVED; COST INCLUDED WITH NEW SHIELDING

REVISIONS	
NAME	DATE

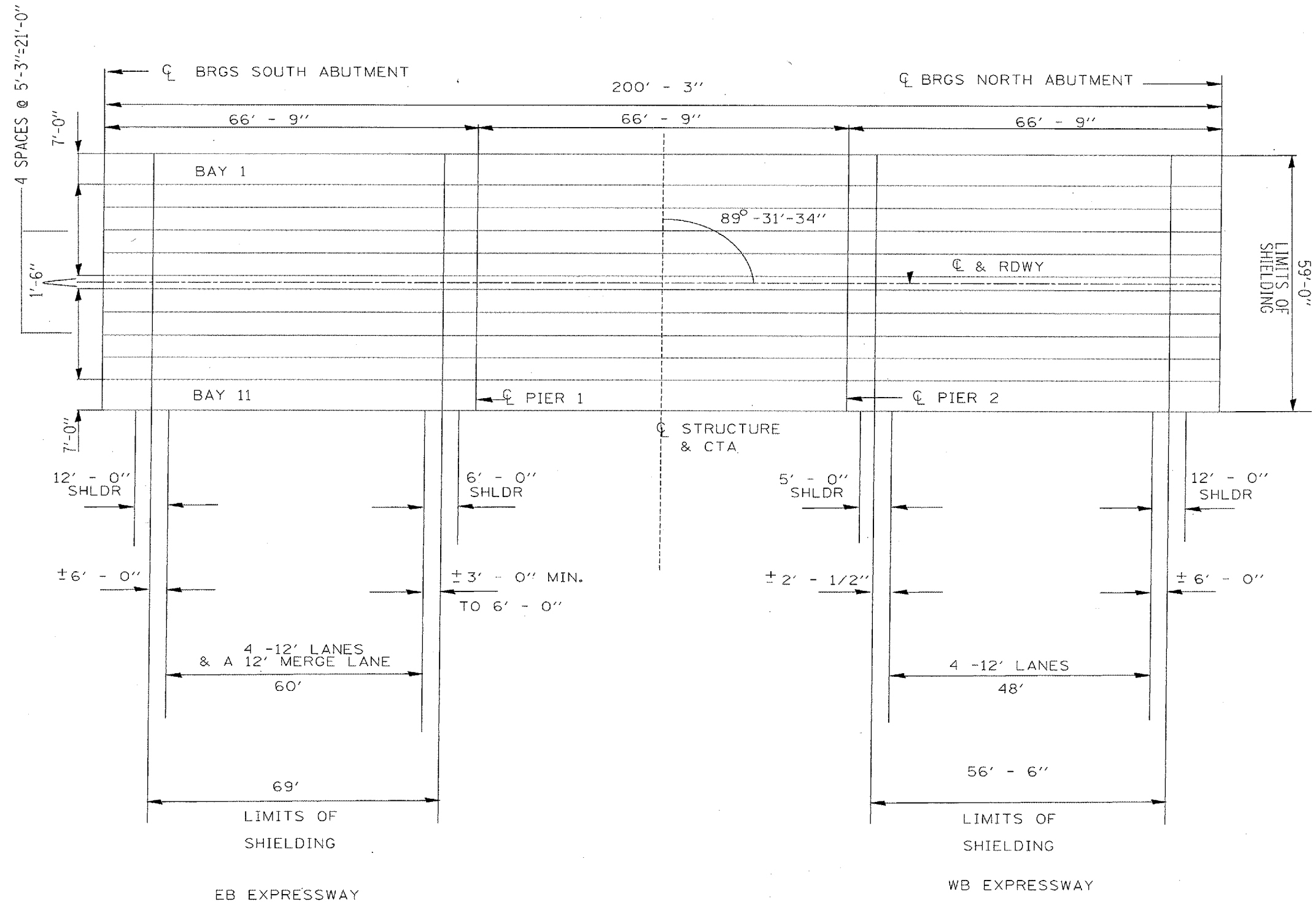
ILLINOIS DEPARTMENT OF TRANSPORTATION
 STRUCTURE PLAN
 ASHLAND AVE OVER I-290
 LOCATION 3
 SN# 016-0783

SCALE: VERT. DATE
 HORIZ. DATE

DRAWN BY
 CHECKED BY

PLOT DATE = 12/6/2006
 FILE NAME = c:\pwork\122705\122705.dgn
 USER NAME = MTD\ELLIF

F.A. DIST.	SECTION	COUNTY	TOTAL SHEETS	SHEET NO.
290	2006-013 1	COOK	15	10
STA.		TO STA.		
FED. ROAD DIST. NO.		ILLINOIS	FED. AID PROJECT	



FRAMING PLAN

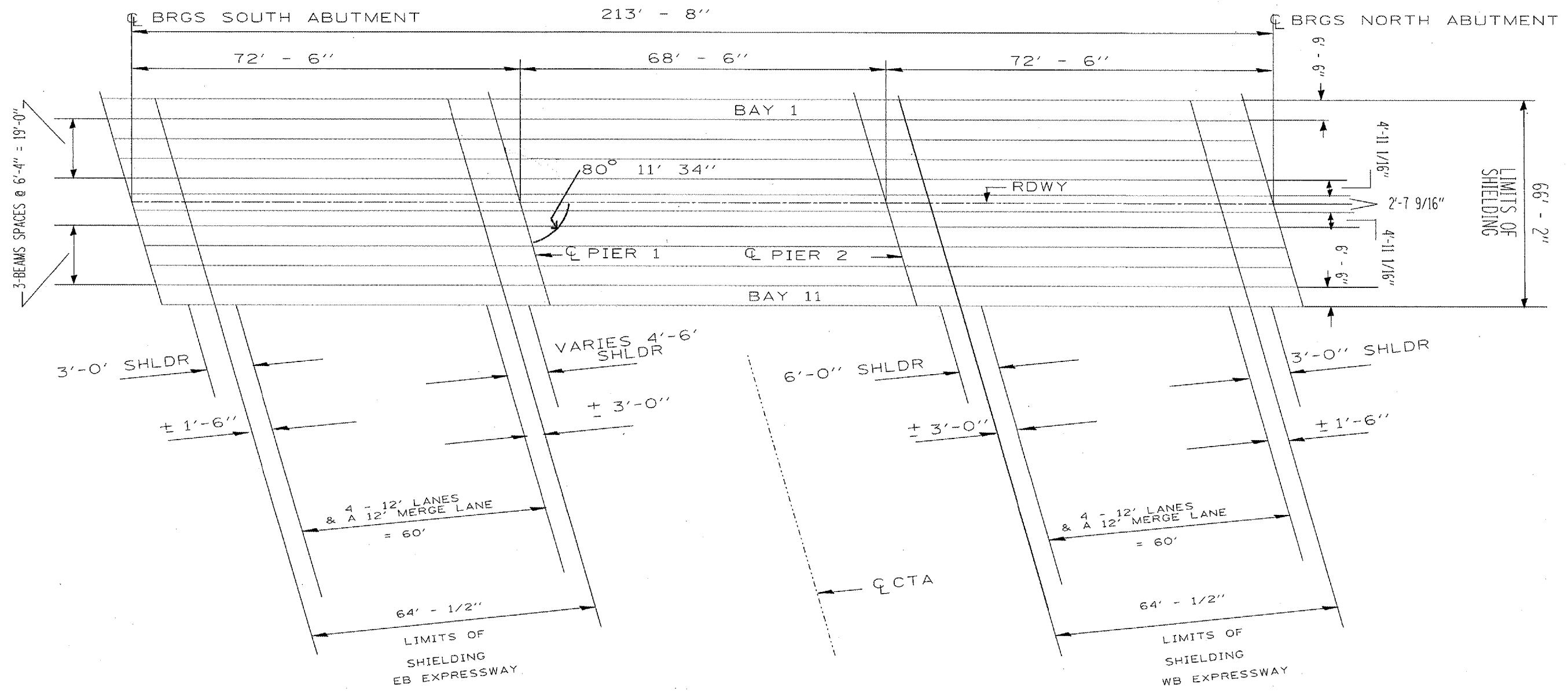
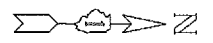
- NOTES:
- ALL BAYS NUMBERED WEST TO EAST
 - LANE AND SHOULDER WIDTHS ARE ESTIMATES
 - STEEL CONDUIT ABOVE DIAPHRAGMS TYPICAL IN BAYS 1 & 11 EB AND WB
 - HANGING LIGHTS TYPICAL IN BAYS 3 & 9 OVER EB AND WB LANES 1 & 4
 - EXISTING SHIELDING:
 - BAYS 7-10 OVER WB LANES 1-4 AND LEFT SHOULDER.
 - BAY 2 OVER WB LANES 1-3.
 - ALL EXISTING SHIELDING SHALL BE REMOVED; COST INCLUDED WITH NEW SHIELDING

REVISIONS	
NAME	DATE

ILLINOIS DEPARTMENT OF TRANSPORTATION
 STRUCTURE PLAN
 CENTRAL PARK AVE OVER I-290
 LOCATION 5
 SN# 016-2072
 SCALE: VERT. _____
 HORIZ. _____
 DATE _____
 DRAWN BY _____
 CHECKED BY _____

PLOT DATE = 12/16/2006
 FILE NAME = c:\pwork\proj\132786\132786.dgn
 USER = gschell
 SCALE = 1/8"=1'-0"
 USER NAME = MITCHELL

F.A. RTE.	SECTION	COUNTY	TOTAL SHEETS	SHEET NO.
290	2006-013 I	COOK	15	11
STA.		TO STA.		
FED. ROAD DIST. NO.		ILLINOIS FED. AID PROJECT		



FRAMING PLAN

- NOTES:
- ALL BAYS NUMBERED WEST TO EAST
 - LANE AND SHOULDER WIDTHS ARE ESTIMATES
 - PLASTIC CONDUIT, BAY 1 ABOVE DIAPHRAGMS OVER EB AND WB EXCEPT OVER LANE 5 EB
 - PLASTIC CONDUIT DROPS TO THE BOTTOM FLANG OVER EB LANES 5
 - HANGING LIGHTS TYPICAL IN BAYS 2 & 8 OVER EB LANES 1 & 5 AND IN BAYS 3 & 8 OVER WB LANES 1 & 5
 - STEEL CONDUIT EVEN WITH BOTTOM FLANGES IN BAYS 9 & 11 OVER EB AND WB I-290

REVISIONS	
NAME	DATE

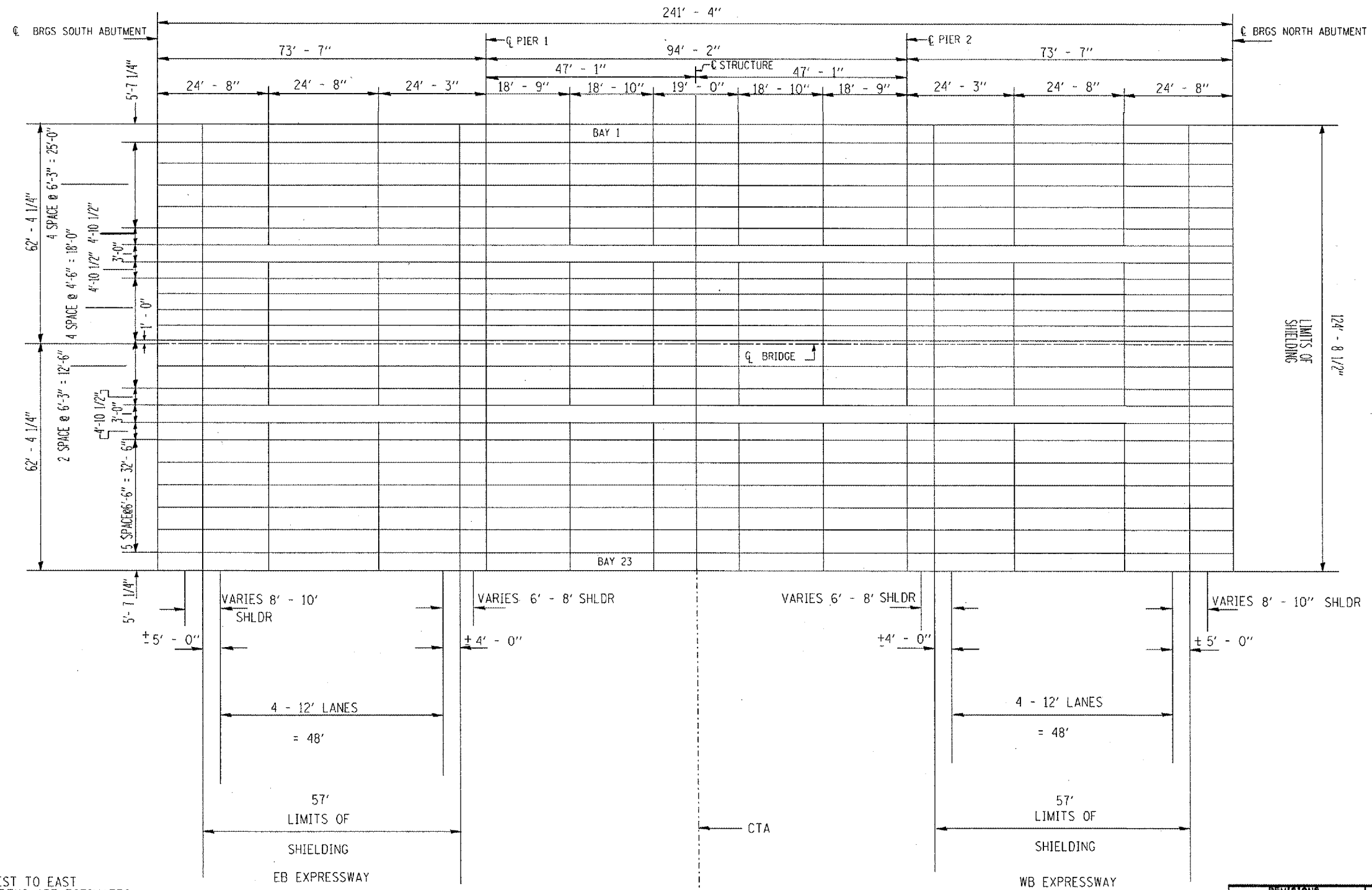
ILLINOIS DEPARTMENT OF TRANSPORTATION
 STRUCTURE PLAN
 KEDZIE AVE OVER I-290
 LOCATION 6
 SN# 016-2074

SCALE: VERT. _____
 HORIZ. _____
 DATE _____

DRAWN BY _____
 CHECKED BY _____

PLOT DATE: 12/6/2006
 FILE NAME: C:\projects\1132785\1132785.dgn
 USER NAME: MITCHELLP

F.A. RYE	SECTION	COUNTY	TOTAL SHEET NO.
290	2006-013 I	COOK	15 12
STA.		TO STA.	
FED. ROAD DIST. NO.		ILLINOIS FED. AID PROJECT	



- NOTES:
- ALL BAYS NUMBERED WEST TO EAST
 - LANE AND SHOULDER WIDTHS ARE ESTIMATES
 - SINGLE STEEL CONDUIT ABOVE DIAPHRAGMS IN BAYS 1 & 10 OVER EB LANES
 - CONDUIT "BUNDLES" IN BAYS 5, 14, 15, 18 & 23 OVER EB & WB LANES
 - THE CONDUITS IN BAYS 14, 15 & 18 ARE BELOW THE DIAPHRAGMS, ALL OTHERS ARE ABOVE.
 - HANGING LIGHTS TYPICAL OVER EB & WB LANES, LEFT & RIGHTS SHOULDERS IN BAYS 4 & 19
 - UNEVEN BEAM DEPTH IN BAYS 8 & 13 OVER SHOULDERS OF EB & WB LANES
 - HANGING LIGHTS IN BAY 13 OVER SHOULDERS OF BOTH EB & WB LANES

FRAMING PLAN

REVISIONS	
NAME	DATE

ILLINOIS DEPARTMENT OF TRANSPORTATION
 STRUCTURE PLAN
 WESTERN AVE OVER I-290
 LOCATION 7
 SN# 016-2083

SCALE: VERT. DATE
 HORIZ.

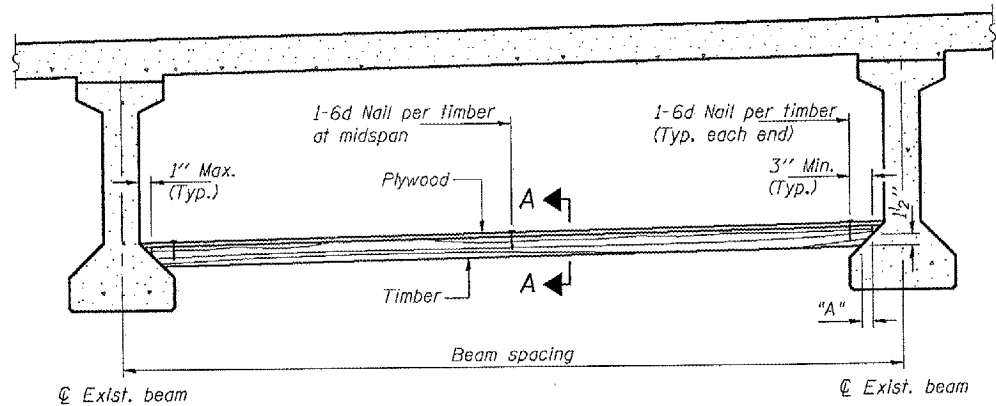
DRAWN BY
 CHECKED BY

PLOT ONE = 2/16/2006
 FILE NAME = C:\P\2006\2006-013 I\2006-013 I - 15 12.dwg
 PLOT SCALE = 1/8" = 1'-0"
 USER NAME = jmcneil

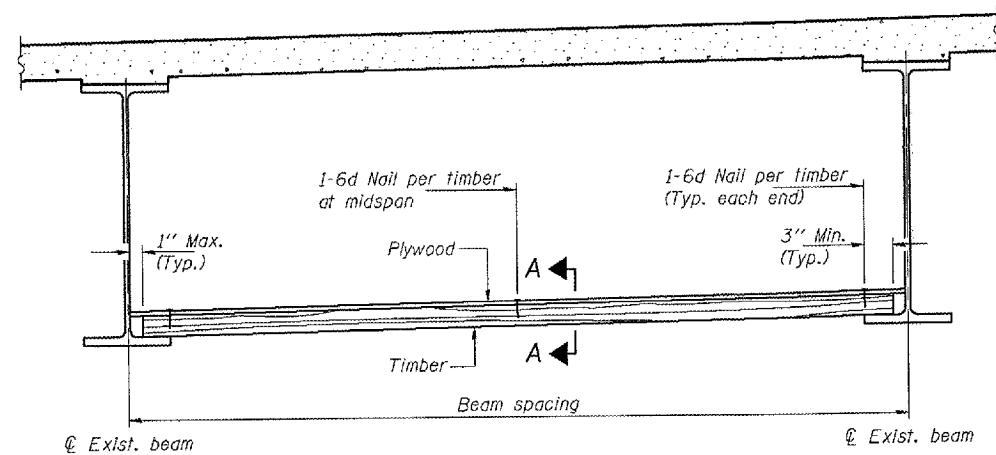
STATE OF ILLINOIS
DEPARTMENT OF TRANSPORTATION

ROUTE NO.	SECTION	COUNTY	TOTAL SHEETS	SHEET NO.	SHEET NO.
FA120		COOK	15	13	
FED. ROAD DIST. NO. 7	BLDG. NO.	FED. AID PROJECT			

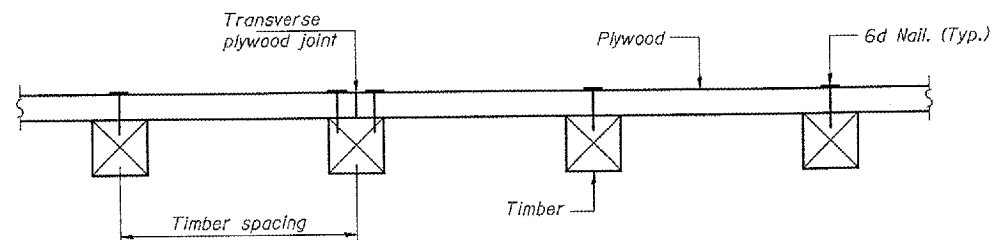
Contract Number: 60B37



PPC I-BEAMS AND BULB-T's



STEEL BEAMS



SECTION A-A

TIMBER SPACING

Beam Spacing (ft.)	Timber Sizes (in.)		
	4" x 4" with min. Fb=775 psi Fv=135 psi	4" x 6" with min. Fb=775 psi Fv=135 psi	6" x 6" with min. Fb=575 psi Fv=125 psi
	Maximum Timber Spacing (in.)		
4.5	16	16	16
4.75	16	16	16
5.0	16	16	16
5.25	16	16	16
5.5	16	16	16
5.75	16	16	16
6.0	16	16	16
6.25	12	16	16
6.5	12	16	16
6.75	12	16	16
7.0	8	16	16
7.25	8	16	16
7.5	8	16	16
7.75	8	16	16
8.0	8	12	16
8.25	8	12	16
8.5	6	12	12
8.75	6	12	12
9.0	6	8	12

PPC I-BEAMS AND BULB-T's

BEAM	"A"
36" I-Beam	1 1/2"
42" I-Beam	1 1/2"
48" I-Beam	1 1/2"
54" I-Beam	1 5/8"
63" Bulb-T	3 3/8"
72" Bulb-T	3 3/8"

Notes: See special provision for Permanent Protective Shield System.
Timber sizes shown are nominal sizes. Rough sawn timber of the dimensions shown will also be considered acceptable.
The minimum Fb and Fv values shown are the tabulated design values given in the National Design Specification for Wood Construction for No. 2 Spruce-Pine-Fir without adjustment factors applied. Better grades or other species with equal or higher allowable stresses will also be considered acceptable.
The timber spacings shown have been determined using allowable stresses with all adjustment factors necessary for the anticipated service conditions.
All timber shall be treated.
Plywood shall be 5/8" Exterior type plywood.
Plywood shall be placed such that the face grain is perpendicular to the timber supports. When less than a full sheet (4' width) of plywood is used, the width of the strip used shall not be less than 2'.
Transverse plywood joints shall be supported by timbers.
When 4" x 6" timbers are used, they shall be placed such that the wide face is horizontal and the narrow face is vertical.
Design load = 200 psf.

BILL OF MATERIAL

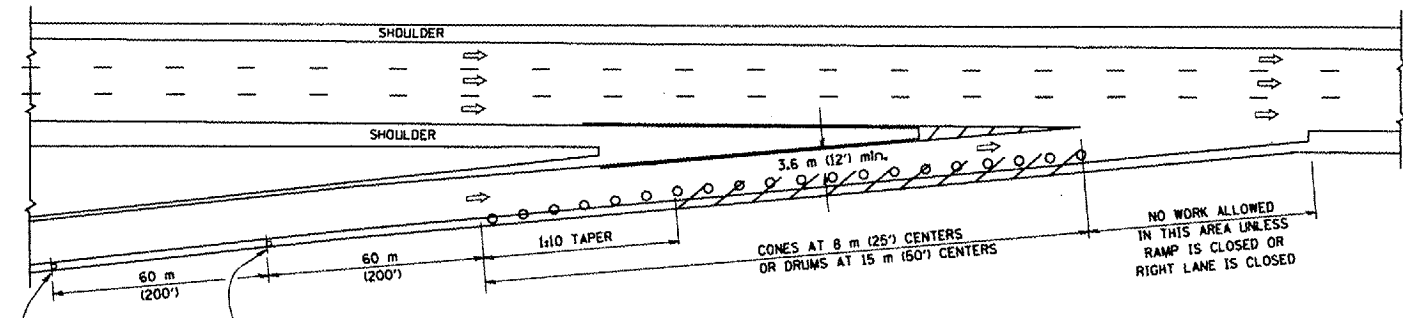
Item	Unit	Total
Protective Shield (Permanent)	Sq. Yd.	7695

PERMANENT PROTECTIVE SHIELD

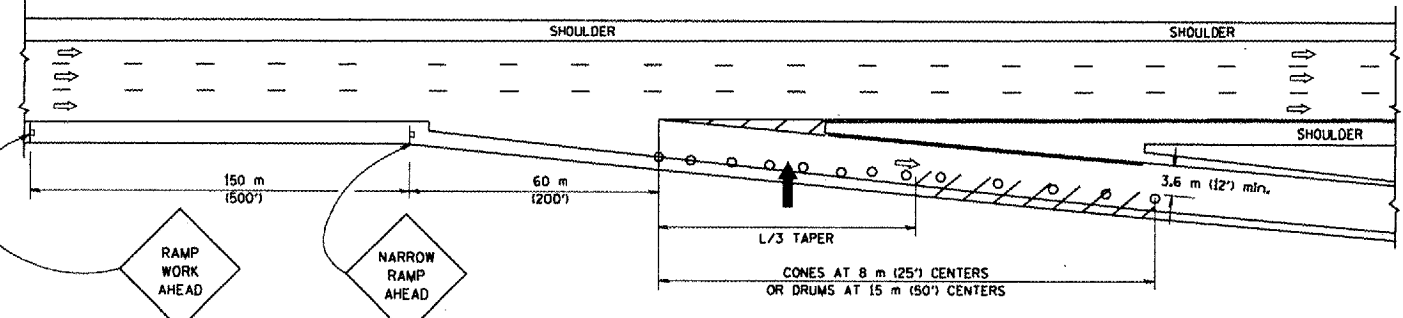
PARTIAL RAMP CLOSURE DETAILS

SHOULDER CLOSURE DETAILS

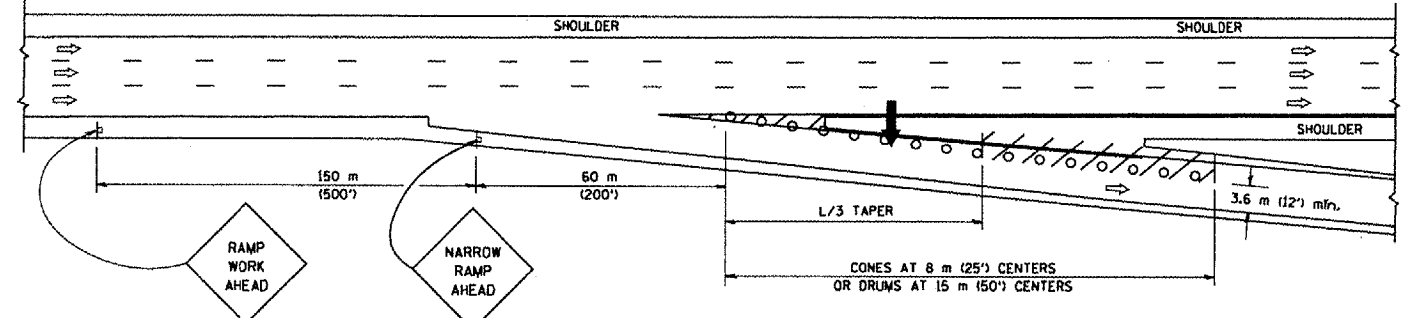
F.A. RTE.	SECTION	COUNTY	TOTAL SHEETS	SHEET NO.
1290	2006-0131	COOK	15	14
STA.	TO STA.			
FED. ROAD DIST. NO.	ILLINOIS	FED. AID PROJECT		



TYPICAL ENTRANCE RAMP



TYPICAL EXIT RAMP



TYPICAL EXIT RAMP

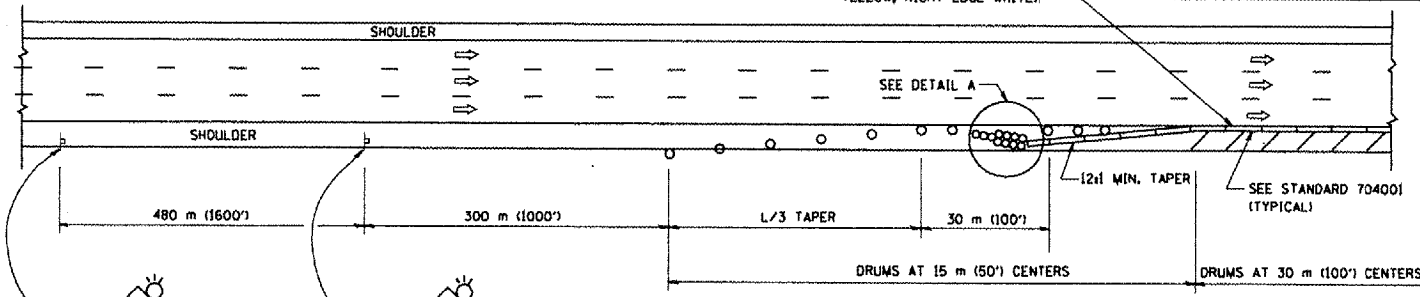
SYMBOLS

- ARROWBOARD
- WORK AREA
- SIGN ON PORTABLE OR PERMANENT SUPPORT
- FLAGGER WITH CONTROL SIGN
- DRUM WITH MONO-DIRECTIONAL STEADY BURNING LIGHT
- CONES - 700 (28) IN HEIGHT

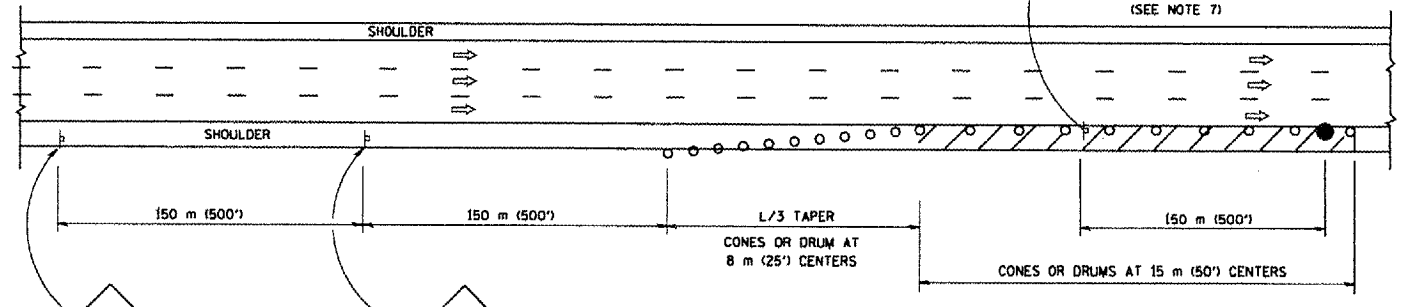
GENERAL NOTES

1. THE "L" DISTANCE EQUALS:

SPEED LIMIT	FORMULAS
80 km/h (45 mph) OR GREATER:	METRIC ENGLISH
	$L=0.65(WKS)$ $L=(WHS)$
W = WIDTH OF OFFSET IN METERS (FEET)	
S = NORMAL POSTED SPEED KM/H (MPH)	
2. PLASTIC DRUMS WITH HIGH PERFORMANCE REFLECTIVE SHEETING AND STEADY BURNING LIGHTS ARE REQUIRED FOR ALL NIGHTTIME CLOSURES.
3. ALL SIGNS SHALL BE POST MOUNTED IF THE CLOSURE TIME EXCEEDS FOUR DAYS.
4. FLASHING LIGHTS SHALL BE USED DURING THE HOURS OF DARKNESS AND SHALL BE INSTALLED ABOVE THE FIRST TWO SETS OF SIGNS.



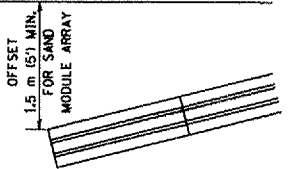
PERMANENT SHOULDER CLOSURE



DAYTIME SHOULDER CLOSURE

THIS DETAIL IS USED WHERE:
 1. VEHICLES, EQUIPMENT, WORKERS OR THEIR ACTIVITIES ENCR OACH IN AN AREA CLOSER THAN 4.5 m (15') TO THE EDGE OF PAVEMENT FOR A PERIOD IN EXCESS OF 15 MINUTES.

ARRAY DESIGN PER MANUFACTURER TO BE NCHRP 350 COMPLIANT FOR POSTED SPEED.



DETAIL "A" IMPACT ATTENUATOR, TEMPORARY (SEE NOTE 5)

5. THE IMPACT ATTENUATOR, TEMPORARY IS NOT REQUIRED WHEN THE TEMPORARY CONCRETE BARRIER WALL IS PROTECTED BY OR IS TIED INTO THE EXISTING GUARDRAIL. IF OFFSET IS LESS THAN 5 FEET USE "TRAFFIC BARRIER TERMINAL, TYPE III, TEMPORARY" DEVICE TO MEET NCHRP350 FOR POSTED SPEED.
6. AUTHORIZATION FROM THE DISTRICT'S BUREAU OF TRAFFIC IS REQUIRED FOR ALL FREEWAY CLOSURES.
7. THE FLAGGER AND FLAGGER SIGN ARE REQUIRED AT THE ABOVE WORK SITES WHEN:
 - a. FOUR OR MORE WORK VEHICLES ENTER THE TRAFFIC LANES IN A ONE HOUR PERIOD.
 - b. THE WORK ACTIVITY REQUIRES FREQUENT ENCROACHMENT INTO THE LANE OPEN TO TRAFFIC.
 THE FLAGGER SHALL BE STATIONED APPROXIMATELY 30 m (100') TO 60 m (200') IN ADVANCE OF THE WORKERS.

ALL DIMENSIONS ARE IN MILLIMETERS (INCHES) UNLESS OTHERWISE SHOWN.

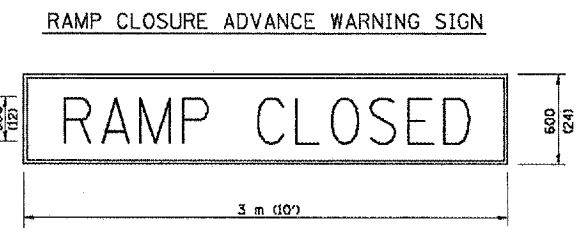
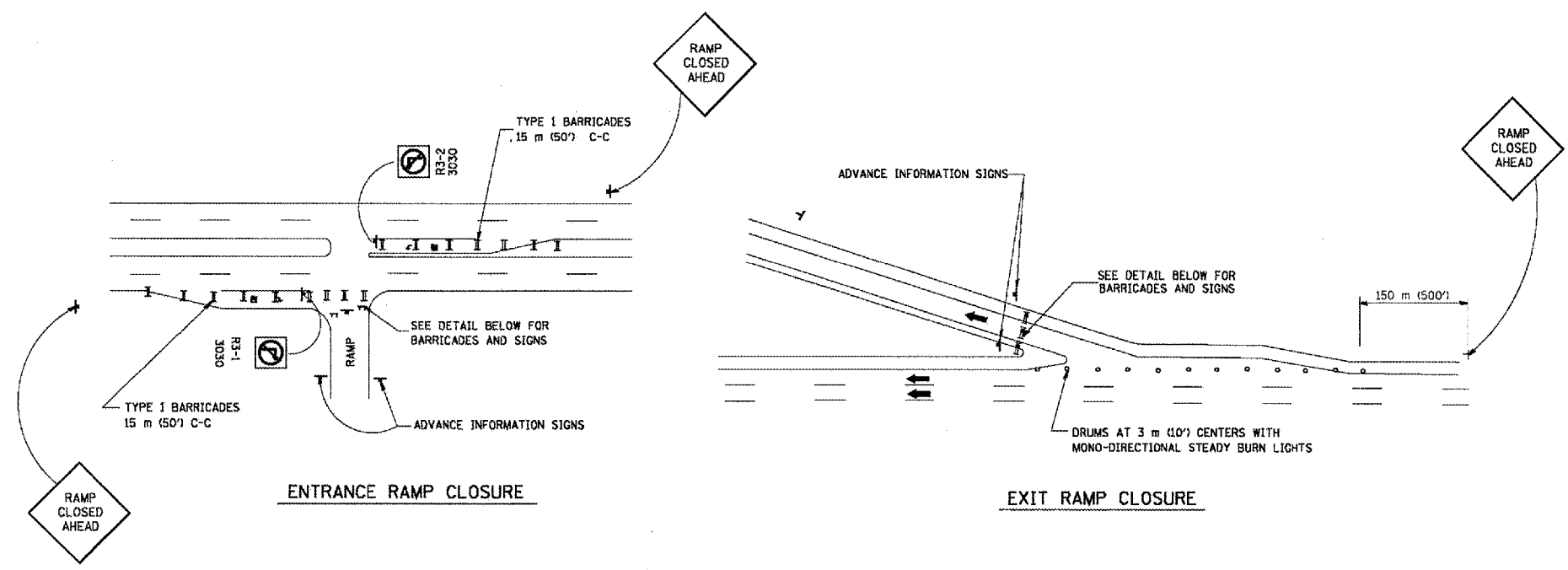
REVISIONS	
NAME	DATE
DWS	11/95
JAF	12/02
NCHRP 350	04/03
JAF	2/06

ILLINOIS DEPARTMENT OF TRANSPORTATION
 TRAFFIC CONTROL DETAILS
 FOR FREEWAY
 SHOULDER CLOSURES
 PARTIAL RAMP CLOSURES

DESIGNED BY: DWS
 DRAWN BY:
 CHECKED BY:
 SCALE: NONE
 DATE: 3/1/2006

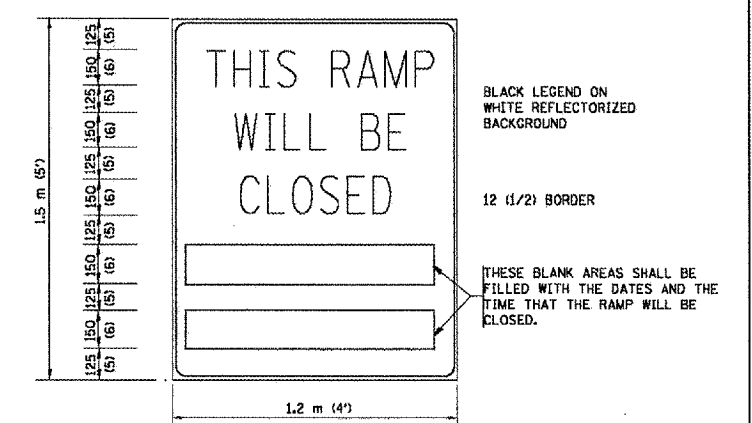
PLOT DATE: 3/1/2006
 FILE NAME: K:\projects\117\117.dwg
 PLOT SCALE: 1:1
 USER: DWG

F.A. RTE.	SECTION	COUNTY	TOTAL SHEETS	SHEET NO.
		COOK	15	15
STA.		TO STA.		
FED. ROAD DIST. NO.	ILLINOIS FED. AID PROJECT			

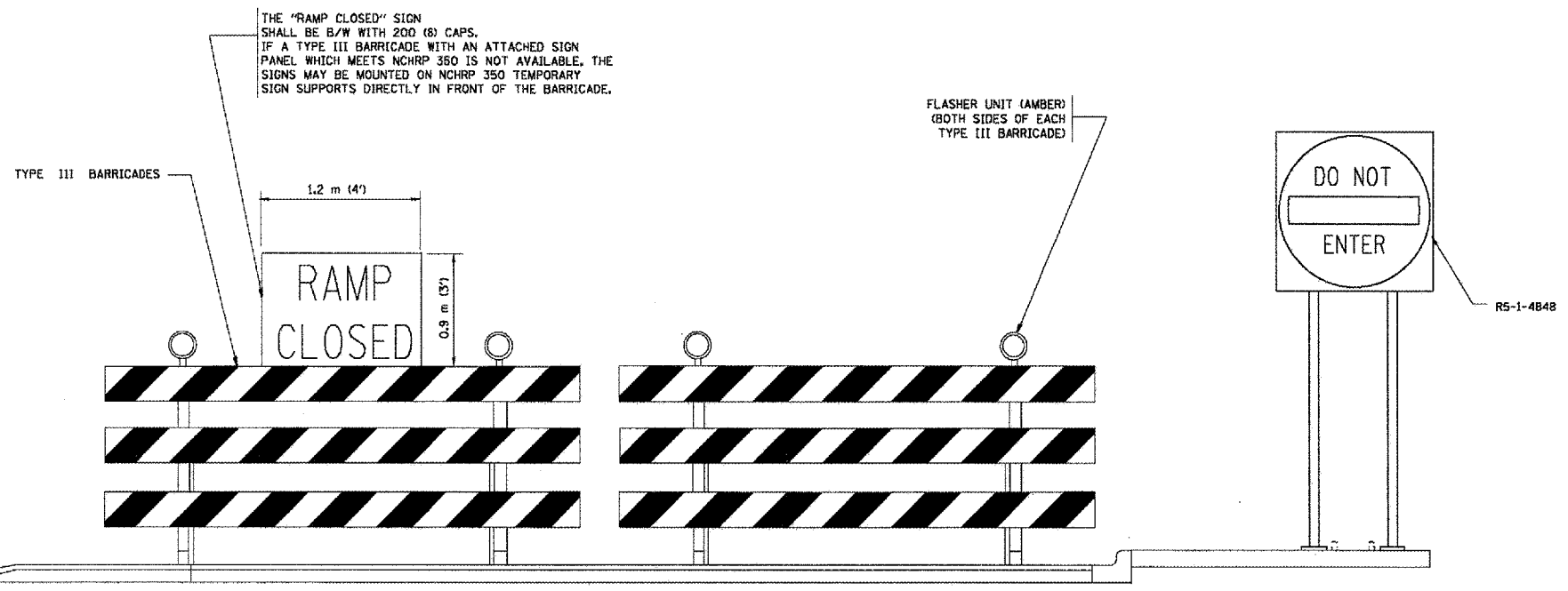


BLACK LEGEND ON ORANGE REFLECTORIZED BACKGROUND
25 (1) BORDER
THESE SIGNS ARE REQUIRED ON ALL THE EXIT GUIDE SIGNS FOR THE CLOSED EXIT RAMP.

RAMP CLOSURE ADVANCE INFORMATION SIGN



THESE SIGNS ARE REQUIRED ON BOTH SIDES OF THE RAMP, MINIMUM OF 1 WEEK IN ADVANCE OF THE CLOSURE.



THE "RAMP CLOSED" SIGN SHALL BE B/W WITH 200 (8) CAPS. IF A TYPE III BARRICADE WITH AN ATTACHED SIGN PANEL WHICH MEETS NCHRP 350 IS NOT AVAILABLE, THE SIGNS MAY BE MOUNTED ON NCHRP 350 TEMPORARY SIGN SUPPORTS DIRECTLY IN FRONT OF THE BARRICADE.

FLASHER UNIT (AMBER) (BOTH SIDES OF EACH TYPE III BARRICADE)

- GENERAL NOTES:
1. CONES MAY BE SUBSTITUTED FOR DRUMS OR TYPE II BARRICADES DURING DAY OPERATIONS. CONES SHALL BE A MINIMUM OF 700 (28) HIGH.
 2. STEADY BURN LIGHTS WILL NOT BE REQUIRED FOR DAY OPERATIONS.
 3. A FLAGGER SHALL BE POSITIONED AT EACH CLOSED RAMP THAT IS OPEN TO CONSTRUCTION VEHICLES.
 4. FOR DAYTIME RAMP CLOSURES, LASTING 6 HOURS OR LESS, THE CONTRACTOR MAY ELIMINATE THE ADVANCE WARNING SIGNS ON THE EXIT GUIDE SIGNS.
 5. ALL ROUTE MARKERS AND TRAILBLAZER ASSEMBLIES WHICH DIRECT MOTORISTS TO A CLOSED ENTRANCE RAMP SHALL BE COVERED.
 6. THE SIGNING AND BARRICADING WHICH IS REQUIRED BY THIS DETAIL SHALL BE CONSIDERED INCIDENTAL TO TRAFFIC CONTROL AND PROTECTION.
 7. AUTHORIZATION FROM THE DISTRICT'S BUREAU OF TRAFFIC IS REQUIRED FOR ALL RAMP CLOSURES.
 8. THE RAMP CLOSURE ADVANCE INFORMATION SIGNS SHALL BE ERECTED IF THE CLOSURE TIME EXCEEDS TWENTY-FOUR (24) HOURS. ADDITIONAL ADVANCE WARNING SIGNS ON EXIT GUIDE SIGNING WILL BE REQUIRED FOR EXIT RAMP CLOSURES THAT EXCEED TWENTY FOUR (24) HOURS IN LENGTH.

ALL DIMENSIONS ARE IN MILLIMETERS (INCHES) UNLESS OTHERWISE SHOWN.

REVISIONS	
NAME	DATE
DWS	2-83
DWS	1/90
DWS	9/94
DWS	12/94
DWS/JAF	12/02
JAF	2/06
Revise devices to meet NCHRP 350	4/03

ILLINOIS DEPARTMENT OF TRANSPORTATION
FREWAY ENTRANCE AND EXIT RAMP CLOSURE DETAILS

SCALE: DATE: 3/1/2006
DRAWN BY: CHECKED BY: TC-8
REVISION DATE: 02/28/06

PLT DATE = 3/1/2006
FILE NAME = K:\Users\jaf\My Documents\60837.dgn
PLOT SCALE = 1/8" = 1'-0"
USER NAME = jaf