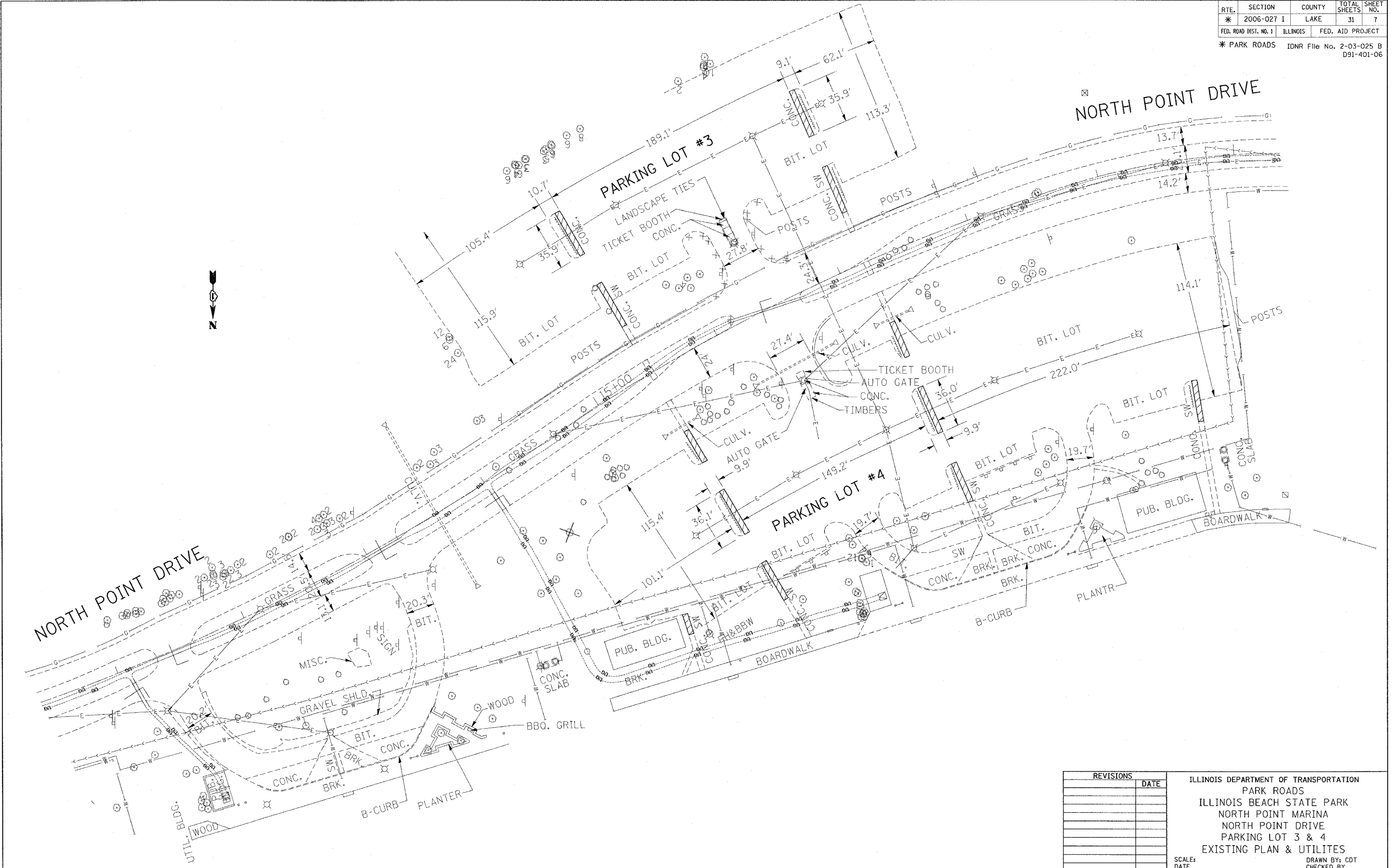


RTE.	SECTION	COUNTY	TOTAL SHEETS	SHEET NO.
* 2006-027 I	LAKE	31	7	
FED. ROAD DIST. NO. 1	ILLINOIS	FED. AID PROJECT		
* PARK ROADS IDNR File No. 2-03-025 B D91-401-06				



11/2/2005
 C:\p134\02\design\02
 FILE NAME
 PLOT SCALE
 REFERENCE

REVISIONS	
NO.	DATE

ILLINOIS DEPARTMENT OF TRANSPORTATION
 PARK ROADS
 ILLINOIS BEACH STATE PARK
 NORTH POINT MARINA
 NORTH POINT DRIVE
 PARKING LOT 3 & 4
 EXISTING PLAN & UTILITES

SCALE:
 DATE

DRAWN BY: CDT
 CHECKED BY: