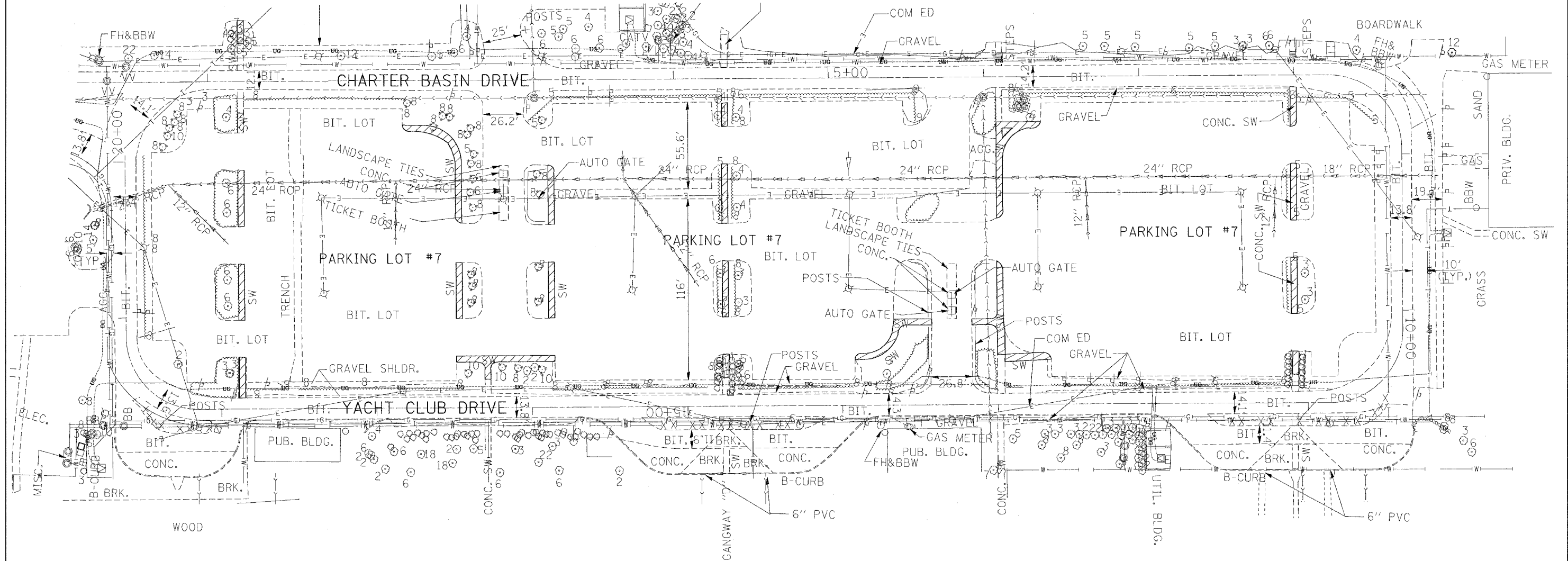


RTE.	SECTION	COUNTY	TOTAL SHEETS	SHEET NO.
* 2006-027 I	LAKE		31	10
FED. ROAD DIST. NO. 1	ILLINOIS	FED. AID PROJECT		
* PARK ROADS IDNR File No. 2-03-025 B D91-401-06				



PLOT DATE 11/23/2005  
 FILE NAME c:\p\projects\34482\design\m2  
 PLOT SCALE 50.0000 / 1 IN.  
 REFERENCE REF

REVISIONS	
DATE	

ILLINOIS DEPARTMENT OF TRANSPORTATION  
 PARK ROADS  
 ILLINOIS BEACH STATE PARK  
 NORTH POINT MARINA  
 YACHT CLUB DRIVE  
 PARKING LOT 7 SOUTH SIDE  
 EXISTING PLAN & UTILITIES

SCALE: DATE  
 DRAWN BY: CDT  
 CHECKED BY: