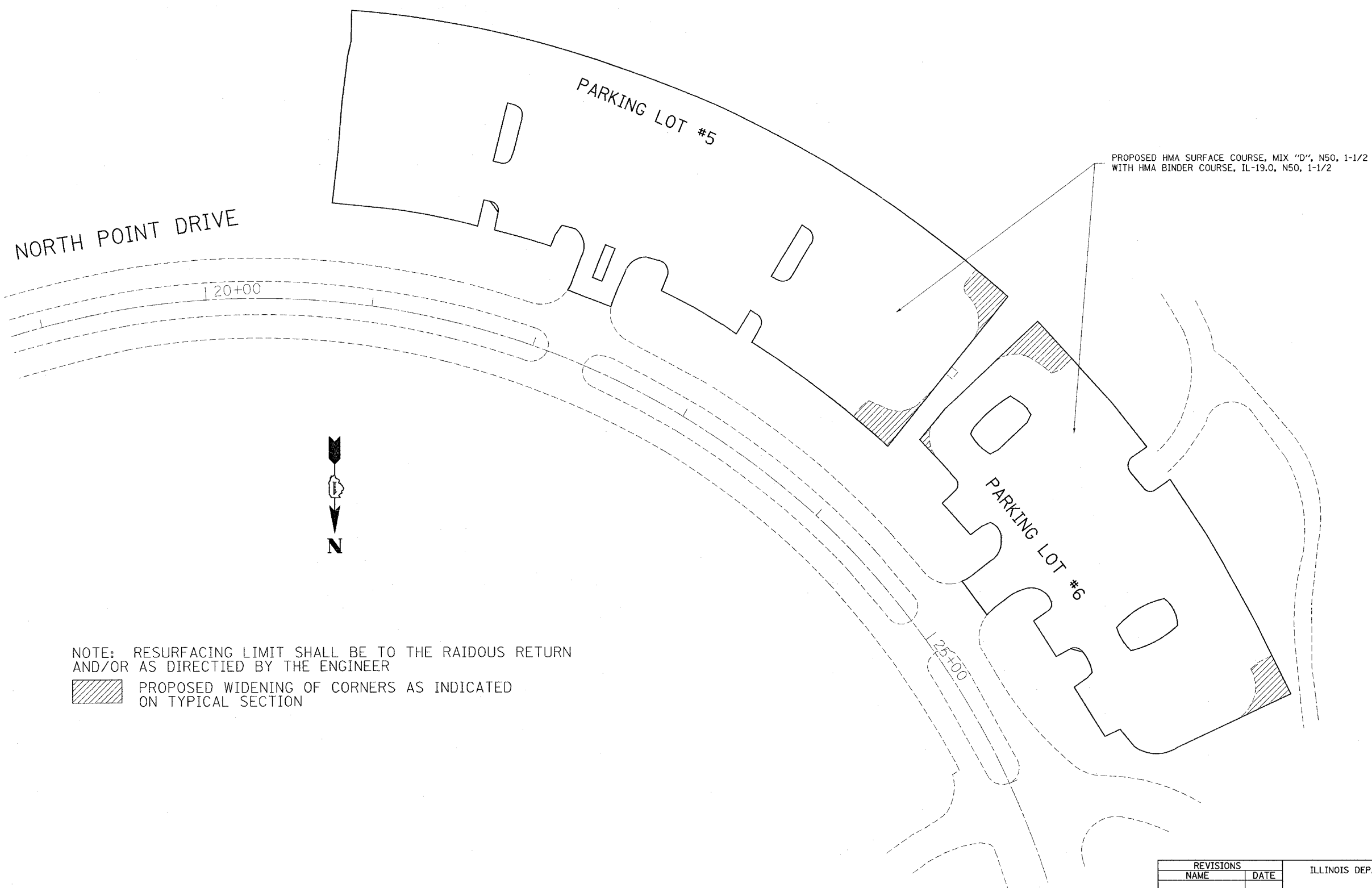
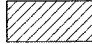


RTE.	SECTION	COUNTY	TOTAL SHEETS	SHEET NO.
* 2006-027 I	LAKE		31	13
FED. ROAD DIST. NO. 1	ILLINOIS	FED. AID PROJECT		
* PARK ROADS IDNR File No. 2-03-025 B D91-401-06				



NOTE: RESURFACING LIMIT SHALL BE TO THE RAIDOUS RETURN AND/OR AS DIRECTIED BY THE ENGINEER

 PROPOSED WIDENING OF CORNERS AS INDICATED ON TYPICAL SECTION

PLOT DATE 11/3/2006  
 FILE NAME c:\p\proj\60b73\60b73.dwg  
 PLOT SCALE 50.0000 7 IN.  
 REFERENCE #1214

REVISIONS	
NAME	DATE

ILLINOIS DEPARTMENT OF TRANSPORTATION  
 PARK ROADS  
 ILLINOIS BEACH STATE PARK  
 NORTH POINT MARINA  
 NORTH POINT DRIVE  
 PARKING LOT 5 & 6  
 PROPOSED PLAN

SCALE: DATE  
 DRAWN BY: CDT  
 CHECKED BY: