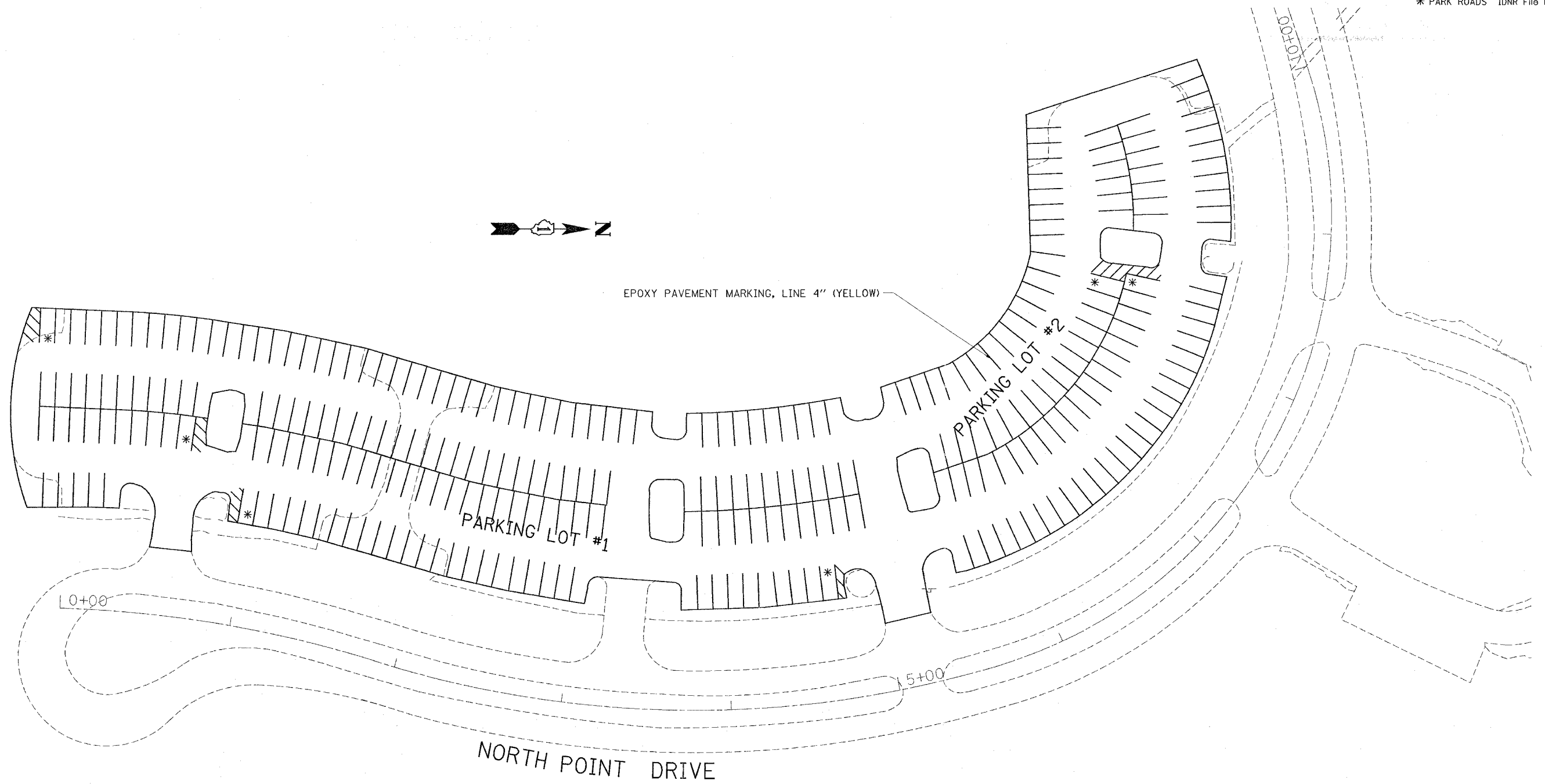


RTE.	SECTION	COUNTY	TOTAL SHEETS	SHEET NO.
*	2006-027 1	LAKE	31	20
FED. ROAD DIST. NO. 1		ILLINOIS	FED. AID PROJECT	

\* PARK ROADS IDNR File No. 2-03-025 B  
D91-401-06



NOTE: ALL LINE SHALL BE 20' LONG WITH 9' SPACING FROM ADJACENT MARKING LINES

SEE SHEET 26 FOR DETAILS

\* HANDICAP PARKING. SEE SHEET 26 FOR DETAILS

REVISIONS	
NAME	DATE

ILLINOIS DEPARTMENT OF TRANSPORTATION  
PARK ROADS  
ILLINOIS BEACH STATE PARK  
NORTH POINT MARINA  
NPRTH POINT DRIVE  
PARKING LOT 1 & 2  
PAVEMENT MARKING PLAN

SCALE: DATE  
DRAWN BY: CDT  
CHECKED BY:

PLOT DATE 11/3/2006  
FILE NAME c:\pro\pca\34482\design\m32  
PLOT SCALE 50.0000' / IN.  
REFERENCE #REF#