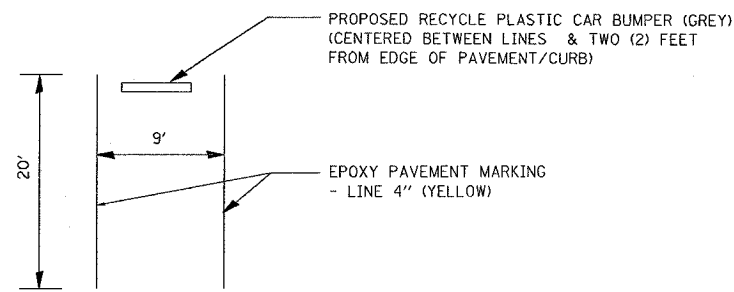
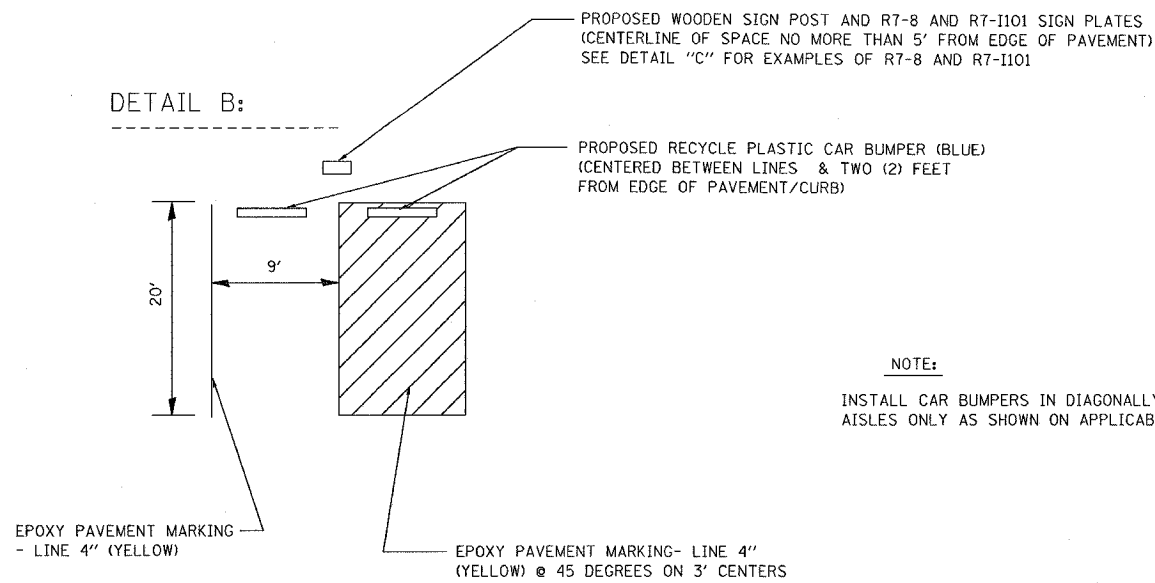


F.A. RTE.	SECTION	COUNTY	TOTAL SHEETS	SHEET NO.
*	2006-027 I	LAKE	31	26
FED. ROAD DIST. NO. 1 ILLINOIS FED. AID PROJECT				
* PARK ROADS I.D.N.R. FILE # 2-03-025 B				

DETAIL A:



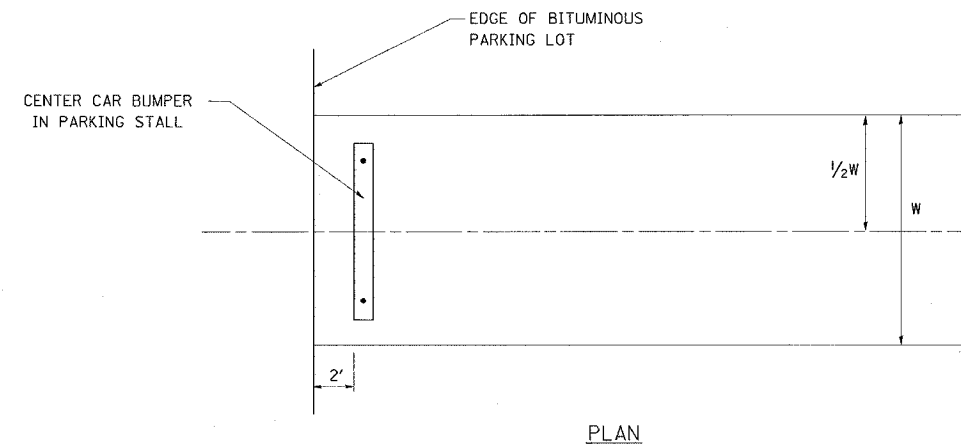
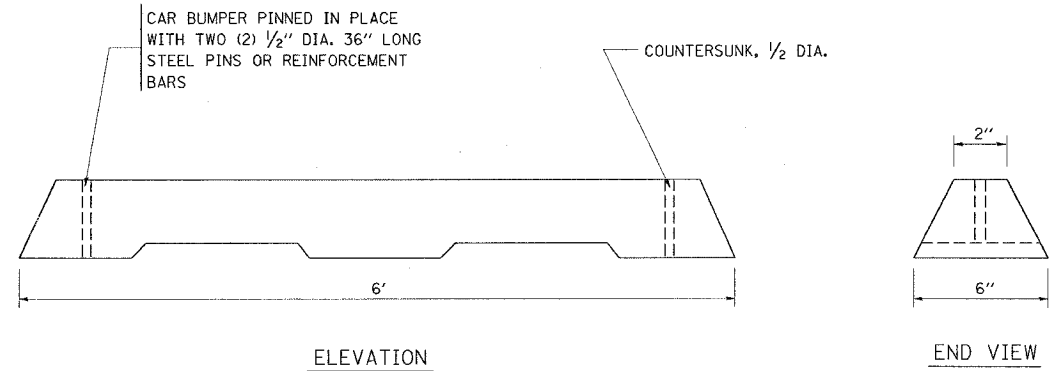
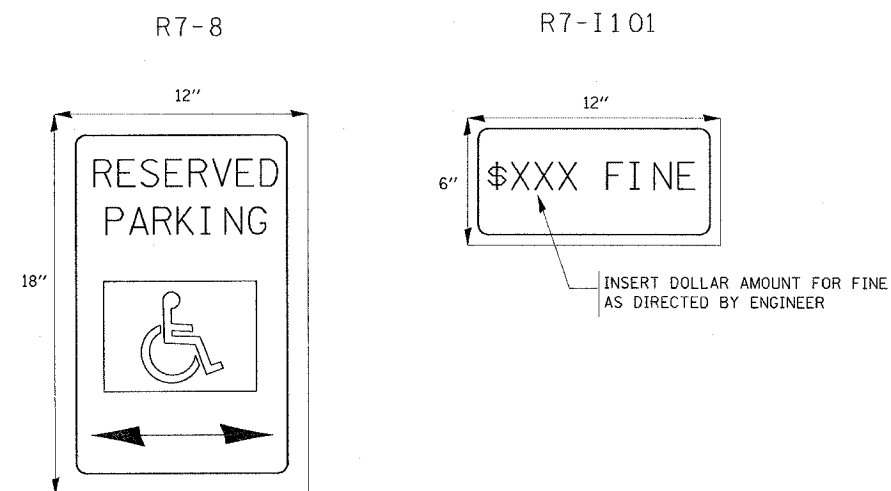
DETAIL B:



NOTE:

INSTALL CAR BUMPERS IN DIAGONALLY-STRIPED ACCESS AISLES ONLY AS SHOWN ON APPLICABLE PLAN SHEETS

DETAIL C:



PLASTIC BUMPER BLOCKS

REVISIONS	
NAME	DATE

ILLINOIS DEPARTMENT OF TRANSPORTATION  
ILLINOIS BEACH STATE PARK  
PARKING LOT PAVEMENT  
MARKING AND  
PLASTIC CAR BUMPER  
DETAIL

SCALE: VERT.     DRAWN BY DN  
HORIZ.             CHECKED BY  
DATE 11/3/2006