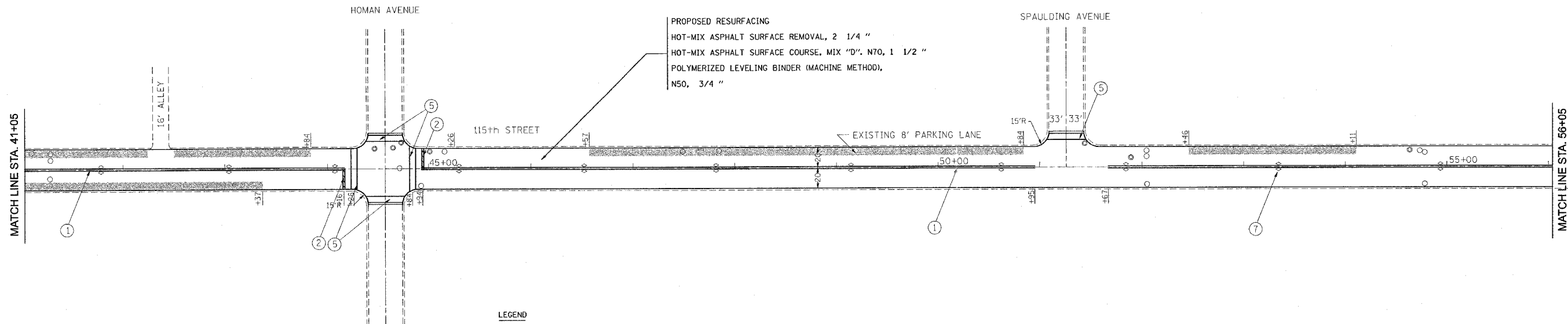
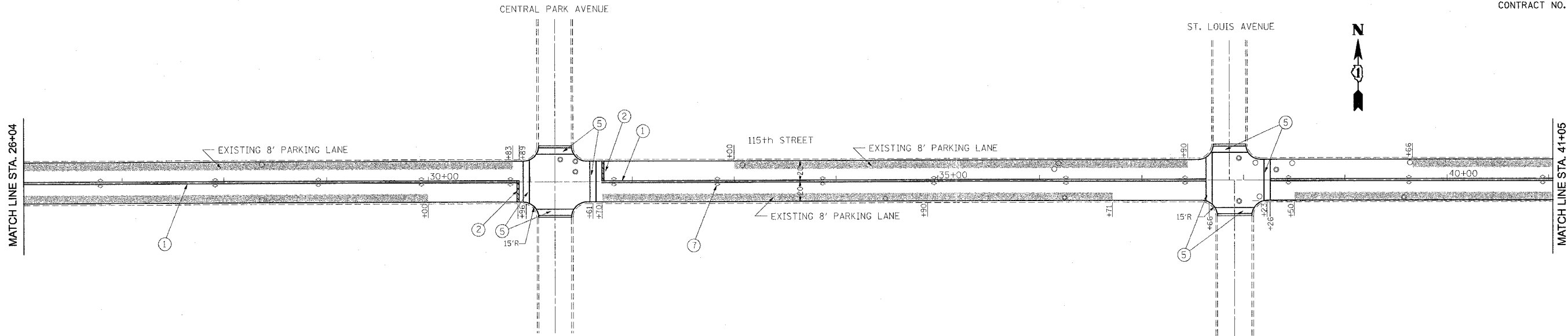


F.A.S. RTE.	SECTION	COUNTY	TOTAL SHEETS	SHEET NO.
1583	0505 RS-5	COOK	29	7
STA. 26+04		TO STA. 56+05		
FED. ROAD DIST. NO. 1		ILLINOIS		FED. AID PROJECT

CONTRACT NO. 60B90



PROPOSED RESURFACING
HOT-MIX ASPHALT SURFACE REMOVAL, 2 1/4"
HOT-MIX ASPHALT SURFACE COURSE, MIX "D", N70, 1 1/2"
POLYMERIZED LEVELING BINDER (MACHINE METHOD), N50, 3/4"

NOTES:
LIMIT OF RESURFACING ON SIDE-STREETS THROUGHOUT THE IMPROVEMENT SHALL BE TO THE RADII OF RETURN OR AS DIRECTED BY THE ENGINEER.
ALL FINAL PAVEMENT MARKINGS SHALL BE THERMOPLASTIC (OF THE EXTRUDED TYPE) AND SHOULD BE PLACED IN ACCORDANCE WITH "DISTRICT ONE TYPICAL PAVEMENT MARKING DETAILS." (TC-11), AND CITY OF CHICAGO TYPICAL PAVEMENT MARKINGS, (TC-24).
ALL RAISED REFLECTIVE PAVEMENT MARKERS SHALL BE IN ACCORDANCE WITH THE DISTRICT ONE "TYPICAL APPLICATIONS RAISED REFLECTIVE PAVEMENT MARKER DETAIL." (TC-11).

- LEGEND**
- ① THERMOPLASTIC PAVEMENT MARKING, 4" DOUBLE SOLID YELLOW CENTERLINE @ 11" C-C (TYP.)
 - ② THERMOPLASTIC PAVEMENT MARKING, 24" SOLID WHITE LINE, STOP BAR (TYP.)
 - ③ THERMOPLASTIC PAVEMENT MARKING, 6" SOLID WHITE TURN LANE LINE, (TYP.)
 - ④ THERMOPLASTIC PAVEMENT MARKING 6" WHITE SKIP DASH LINES (2' DASH, 6' SPACING) (TYP.)
 - ⑤ THERMOPLASTIC PAVEMENT MARKING 6" WHITE CROSSWALK LINES, 2 @ 6' C-C SPACING (TYP.)
 - ⑥ THERMOPLASTIC PAVEMENT MARKING 4" YELLOW SKIP DASH LANE LINE (6' DASH, 18' SKIP) (TYP.)
 - ⑦ RAISED REFLECTIVE PAVEMENT MARKERS

REVISIONS	
NAME	DATE

ILLINOIS DEPARTMENT OF TRANSPORTATION
115th STREET
PULASKIRD. TO WESTERN AVE.
ROADWAY & PAVEMENT
MARKING PLAN
SCALE: VERT. 1" = 50'
HORIZ. 1" = 50'
DATE 11/6/2006
DRAWN BY: HMO
CHECKED BY: