

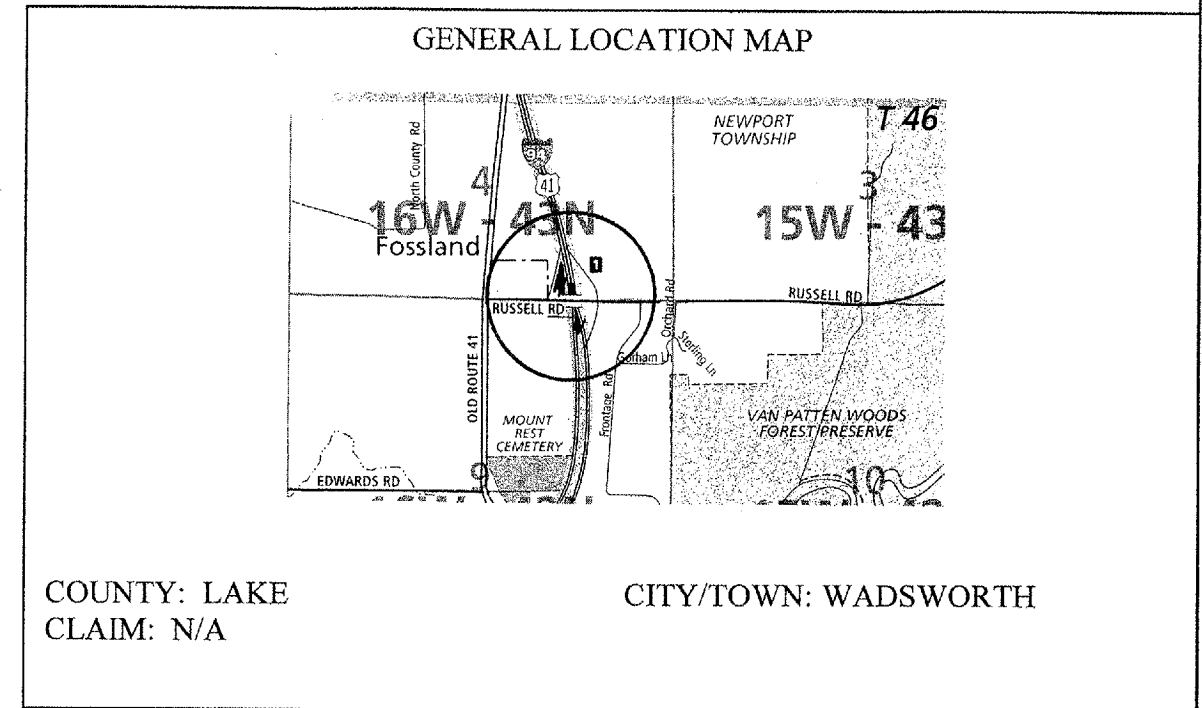
ROUTE	SECTION	COUNTY	TOTAL SHEETS	SHEET NUMBER
VARIOUS	2006-035 LS	VARIOUS	27	7

CONTRACT 60B91

SCHEDULE OF LANDSCAPE ITEMS

DESCRIPTION	QTY/UNIT
WEED CONTROL, PRE-EMERGENT HERBICIDE	0.25 GALLON
ROSA 'KNOCKOUT' KNOCKOUT ROSE	50 EACH
PERENNIAL PLANTS, GALLON POT	4.60 UNITS
<i>ANDROPOGON GERARDII</i>	0.20 UNITS
<i>ANDROPOGON SCOPARIUS</i>	0.20 UNITS
<i>ASCLEPIAS TUBEROSA</i>	0.50 UNITS
<i>BAPTISIA AUSTRALIS</i>	0.60 UNITS
<i>ECHINACEA PURPUREA 'MAGNUS'</i>	1.00 UNITS
<i>LIATRIS ASPERA</i>	0.50 UNITS
<i>PANICUM VIRGATUM 'SHENANDOAH'</i>	0.60 UNITS
<i>RUDBECKIA FULGIDA 'GOLDSTURM'</i>	1.00 UNITS
INTERSEEDING, CLASS 4A**	6 ACRES
INTERSEEDING, CLASS 5A (MODIFIED)**	6 ACRES
SHREDDED BARK MULCH	1066 SQ YD
WEED CONTROL, NON-SELECTIVE AND NON-RESIDUAL	0.25 GALLON

**NOTE: INTERSEEDING WILL BE DONE AT THREE (3) DIFFERENT AREAS WITHIN THE EXPRESSWAY INTERCHANGE.



NOTIFY MELISSA DEL ROSARIO 72 HOURS PRIOR TO PLANTING AT (847) 705-4171 FOR LAYOUT.

ILLINOIS DEPARTMENT OF TRANSPORTATION
LANDSCAPE REPAIR LOCATION AND LAYOUT PLAN