

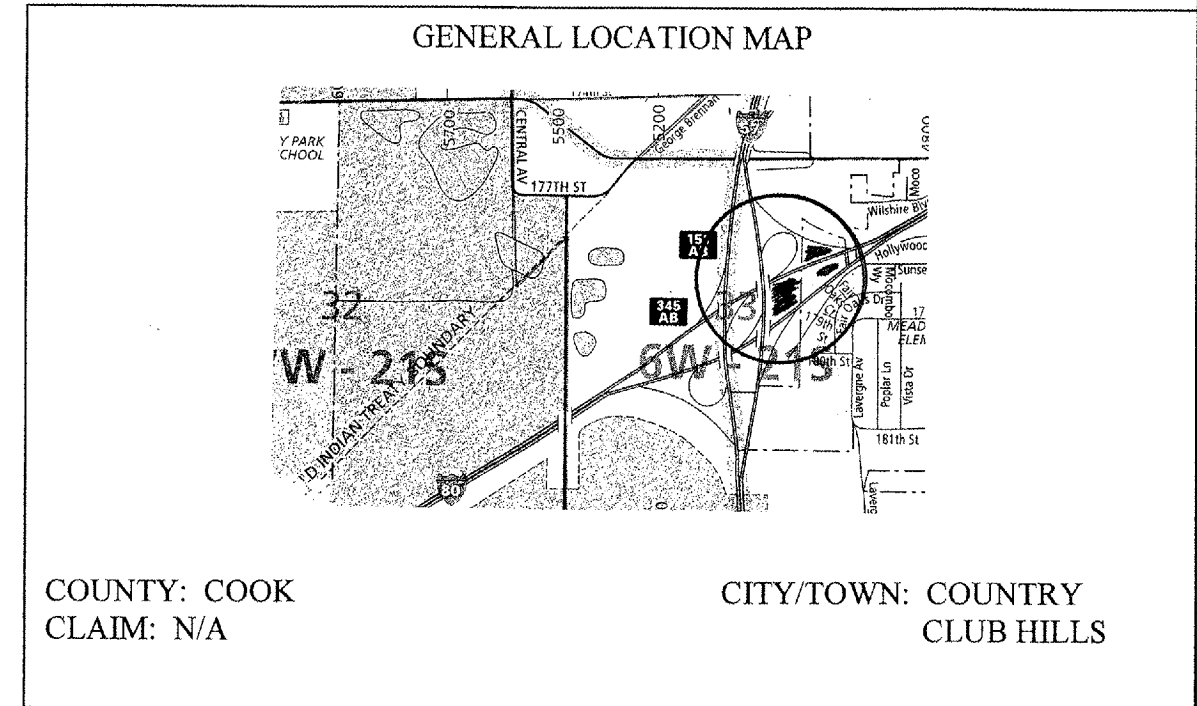
ROUTE	SECTION	COUNTY	TOTAL SHEETS	SHEET NUMBER
VARIOUS	2006-035 LS	VARIOUS	27	21

CONTRACT 60B91

SCHEDULE OF LANDSCAPE ITEMS

DESCRIPTION	QTY/UNIT
<b>WEED CONTROL, PRE-EMERGENT HERBICIDE</b>	0.25 GALLON
<b>ROSA 'BLUSHING KNOCKOUT'</b>	50 EACH
<b>PERENNIAL PLANTS, GALLON POT</b>	3.00 UNITS
<i>ASTER NOVAE-ANGLIAE 'ALMA POTSCHKE'</i>	0.50 UNITS
<i>ECHINACEA PURPUREA 'MAGNUS'</i>	0.50 UNITS
<i>HEMEROCALLIS 'STELLA D'ORO'</i>	0.50 UNITS
<i>LIATRIS ASPERA</i>	0.50 UNITS
<i>RUDBECKIA FULGIDA 'GOLDSTURM'</i>	0.50 UNITS
<i>SILPHIUM LACINIATUM</i>	0.50 UNITS
<b>INTERSEEDING, CLASS 4A**</b>	4 ACRES
<b>INTERSEEDING, CLASS 5A (MODIFIED)**</b>	8 ACRES
<b>SHREDDED BARK MULCH</b>	1066 SQ YD

\*\*NOTE: INTERSEEDING WILL BE DONE AT TWO (2) DIFFERENT AREAS WITHIN THE EXPRESSWAY INTERCHANGE.



**NOTIFY FABIOLA QUIROZ 72 HOURS PRIOR TO PLANTING AT (847) 705-4171 FOR LAYOUT.**

ILLINOIS DEPARTMENT OF TRANSPORTATION  
LANDSCAPE REPAIR LOCATION AND LAYOUT PLAN