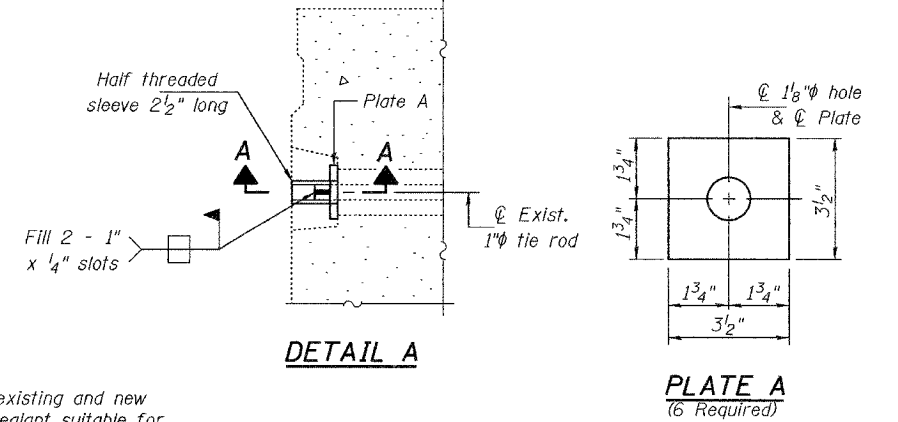
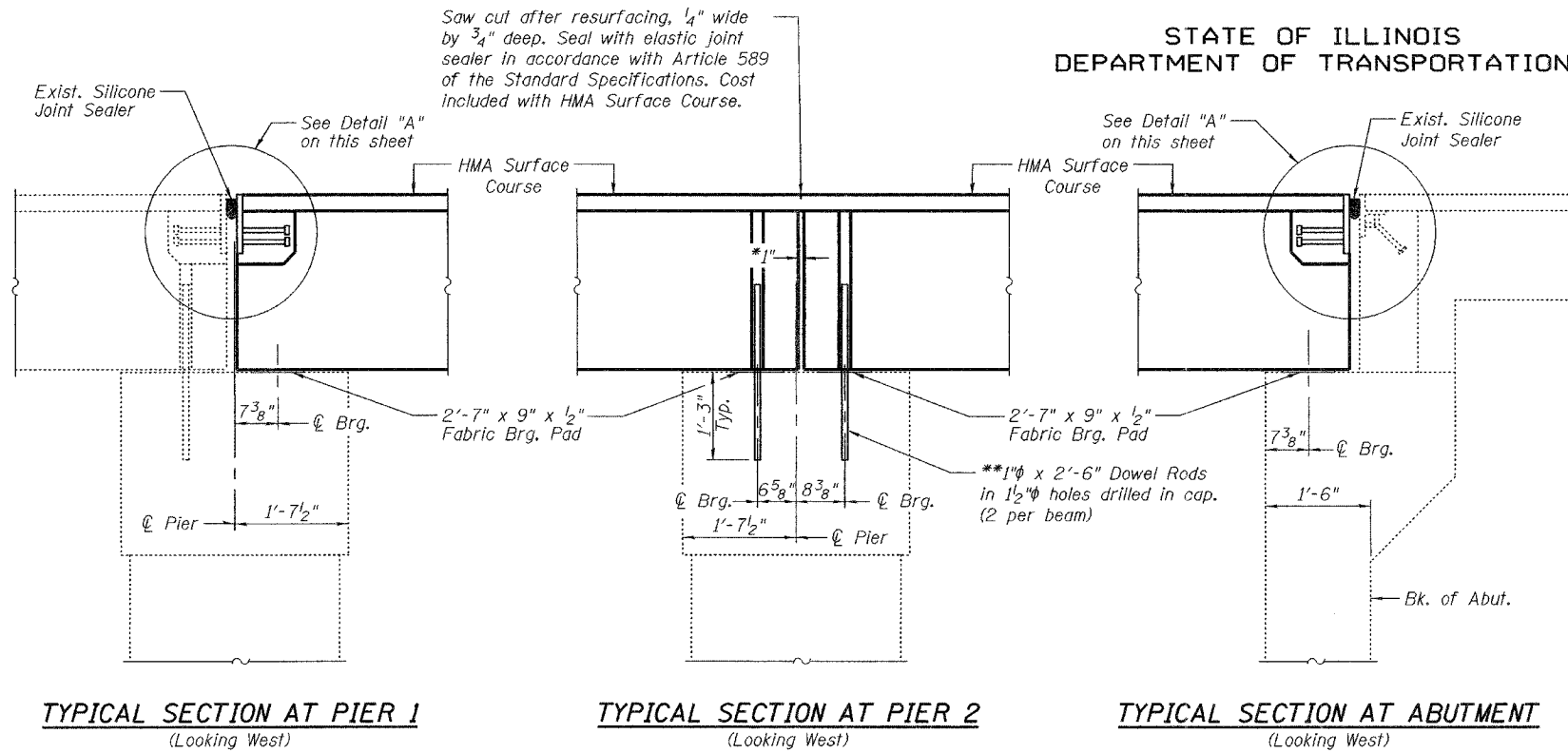


STATE OF ILLINOIS
DEPARTMENT OF TRANSPORTATION

ROUTE NO.	SECTION	COUNTY	DATE	SHEET NO.	SHEET NO. 3 4 SHEETS
		McHenry	12	6	
FED. ROAD DIST. NO. 7	ILLINOIS	FED. AID PROJECT	Contract Number: 60B96		

*1" Joint shall be filled with non-shrink grout. Dimension may vary to accommodate tolerance in beam lengths.

**Existing dowel rods are to be burned off, ground flush, and sealed with epoxy prior to placement of new beams. Cost included in Removal of Existing PPC Deck Beams. After beams have been erected holes shall be drilled into cap and dowel rods placed. Dowel holes shall be filled with non-shrink grout to top of beam and allowed to cure a minimum of 24 hours prior to grouting the shear keys.



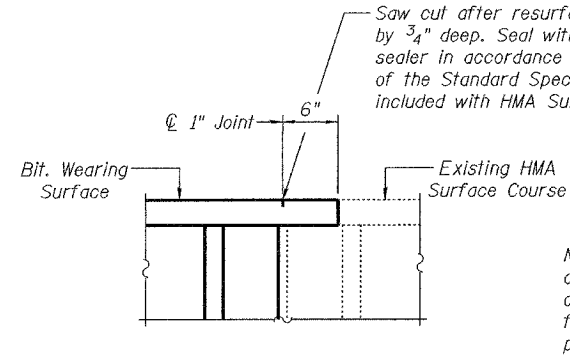
TYPICAL SECTION AT PIER 1
(Looking West)

TYPICAL SECTION AT PIER 2
(Looking West)

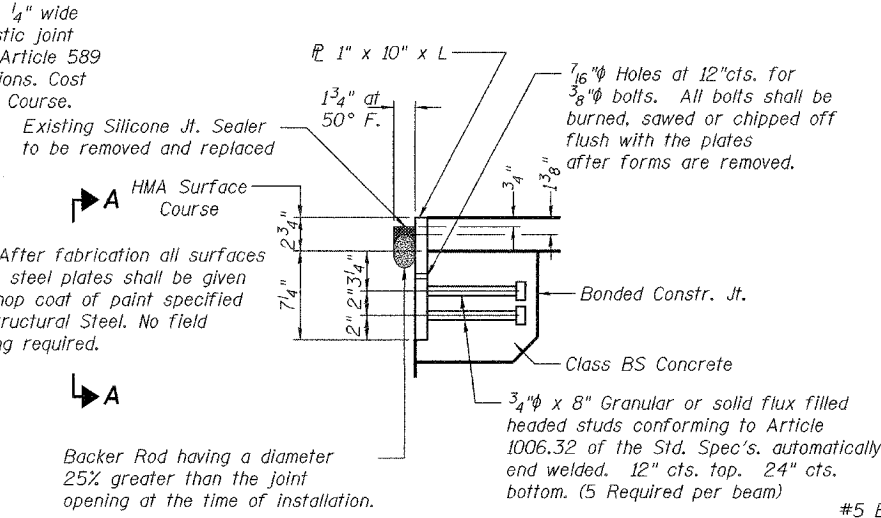
TYPICAL SECTION AT ABUTMENT
(Looking West)

DETAIL A

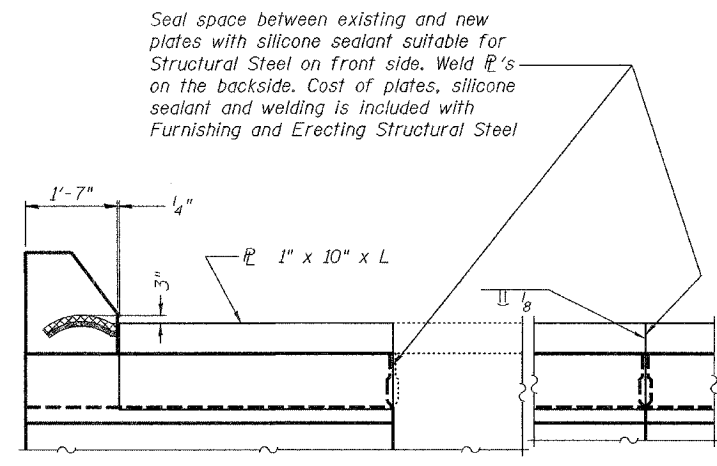
PLATE A
(6 Required)



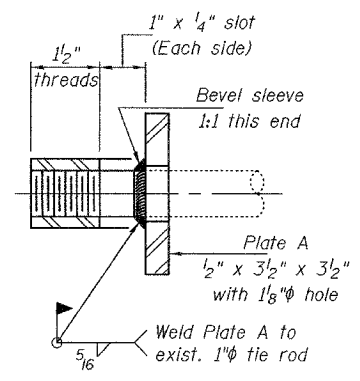
ALTERNATE OVERLAY AT SINGLE
BEAM REPLACEMENT AT PIER 2



DETAIL "A"

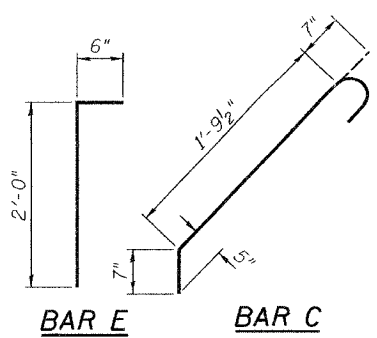


VIEW A-A



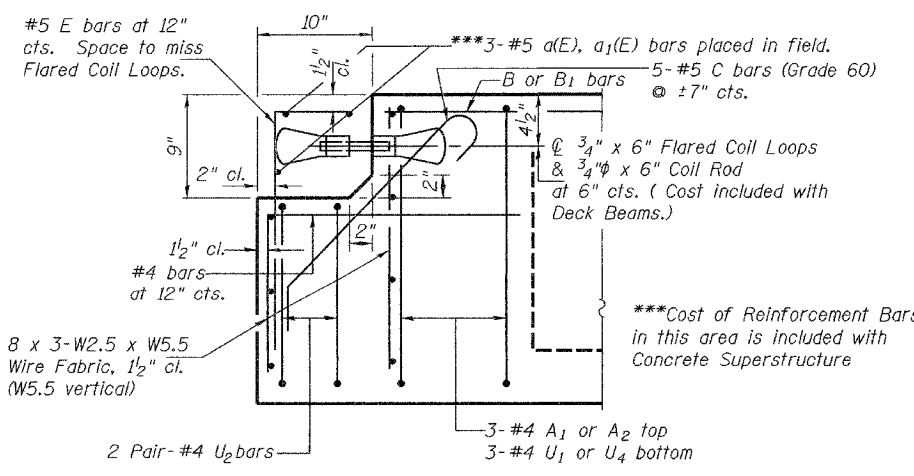
SECTION A-A
(6 Required)

Beam	Span	End	L
3 & 4	2	South	6'-0"
11	2	South	3'-0"
1	3	North	1'-4 3/4"
4	3	North	3'-0"



BAR E

BAR C



EXPANSION END OF BEAM

BILL OF MATERIAL

Bar	No.	Size	Length	Shape
a(E)	9	#5	2'-11"	—
a1(E)	3	#5	5'-10"	—

BEAM DETAILS
F.A.P. RT. 324
MCHENRY COUNTY
SN 056-0010

DESIGNED	V.H.V.
CHECKED	A.J.B.
DRAWN	Drew Christopher
CHECKED	V.H.V. A.J.B.

December 4, 2006
EXAMINED John A. Morris
ENGINEER OF STRUCTURAL SERVICES
PASSED Ralph E. Anderson
ENGINEER OF BRIDGES AND STRUCTURES