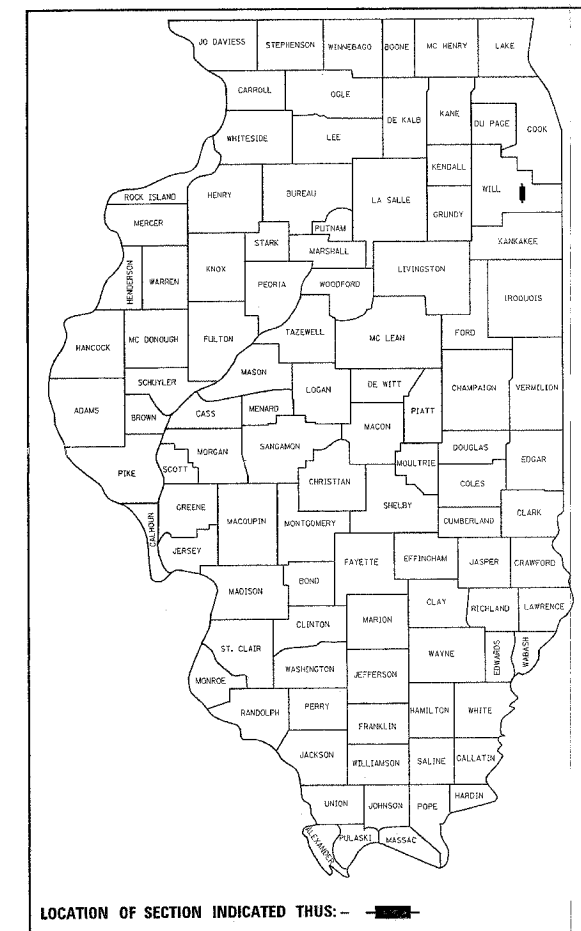


| F.A.I. RTE. | SECTION | COUNTY | TOTAL SHEETS | SHEET NO. |
|-------------|-------------|--------|--------------|-----------|
| 55 | 2006-038 GR | WILL | 12 | 1 |

D-91-077-07



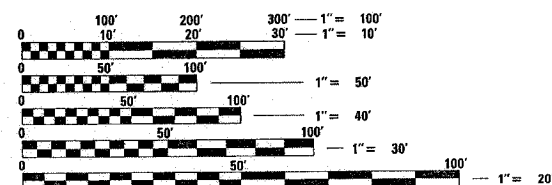
STATE OF ILLINOIS
 DEPARTMENT OF TRANSPORTATION
 DIVISION OF HIGHWAYS
**PLANS FOR PROPOSED
 HIGHWAY**

**FAI 55 : (INTERSTATE 55)
 (US 6 TO DESPLAINES RIVER)
 SECTION: 2006-038 GR
 HIGH TENSION CABLE GUARDRAIL
 PROJECT: HSIP-055-6(224)248
 WILL COUNTY
 C-91-077-07**

FOR INDEX OF SHEETS, SEE SHEET NO. 2

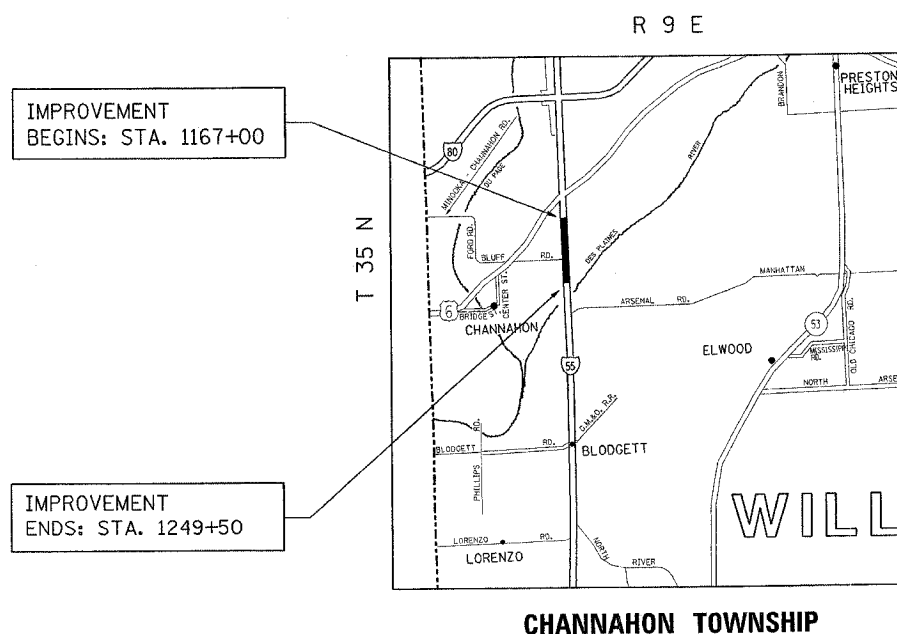
THE IMPROVEMENT IS LOCATED IN THE VILLAGE OF CHANNAHON IN WILL COUNTY

DISTRICT ONE DESIGN PLAN PREPARATION ENGINEER: KEN ENG/ LONG TRAN - (847)705-4240



FULL SIZE PLANS HAVE BEEN PREPARED USING STANDARD ENGINEERING SCALES. REDUCED SIZED PLANS WILL NOT CONFORM TO STANDARD SCALES. IN MAKING MEASUREMENTS ON REDUCED PLANS, THE ABOVE SCALES MAY BE USED.

J.U.L.I.E.
 JOINT UTILITY LOCATION INFORMATION FOR EXCAVATION
 1-800-892-0123



TRAFFIC DATA

ADT = 40,000 - 60,000
 POSTED SPEED LIMIT= 65 MPH

STATE OF ILLINOIS
 DEPARTMENT OF TRANSPORTATION
 DIVISION OF HIGHWAYS

SUBMITTED October 27, 20 06

Diane O'Keefe
 DEPUTY DIRECTOR OF HIGHWAYS, REGION ENGINEER

December 8, 20 06
Eric E. Harsh
 ENGINEER OF DESIGN AND ENVIRONMENT

December 8, 20 06
Milton R. Sear
 DIRECTOR OF HIGHWAYS, CHIEF ENGINEER

**PRINTED BY THE AUTHORITY
 OF THE STATE OF ILLINOIS**

GROSS AND NET LENGTH OF IMPROVEMENT = 8250 LINEAL FEET = 1.56 MILES

| F.A.I. RTE. | SECTION | COUNTY | TOTAL SHEETS | SHEET NO. |
|-----------------------|-------------|---------------------------|--------------|-----------|
| 55 | 2006-038 GR | WILL | 12 | 2 |
| STA. | | TO STA. | | |
| FED. ROAD DIST. NO. 1 | | ILLINOIS FED. AID PROJECT | | |

CONTRACT 60899

INDEX OF SHEETS

| SHEET NO. | DESCRIPTION |
|-----------|---|
| 1 | COVER SHEET |
| 2 | INDEX OF SHEETS, STANDARDS, AND GENERAL NOTES |
| 3 | SUMMARY OF QUANTITIES |
| 4 | SCHEDULE OF QUANTITIES |
| 5 | TYPICAL SECTIONS |
| 6-11 | EXISTING AND PROPOSED ROADWAY PLANS |
| 12 | TRAFFIC CONTROL FOR FREEWAY SHOULDER CLOSURES PARTIAL RAMP CLOSURES |

LIST OF STATE STANDARDS

| STANDARD NO. | DESCRIPTION |
|--------------|--|
| 701101-01 | OFF-RD OPERATIONS, MULTILANE LESS THAN 4.5 M (15') AWAY FOR SPEEDS \geq 45 MPH |
| 701400-02 | APPROACH TO LANE CLOSURE, FREEWAY/EXPRESSWAY |
| 701401-03 | LANE CLOSURE, FREEWAY/EXPRESSWAY |
| 702001-06 | TRAFFIC CONTROL DEVICES |

PLAN NOTES

- BEFORE STARTING ANY EXCAVATION, THE CONTRACTOR SHALL CALL "JULIE" AT (800)892-0123 FOR FIELD LOCATIONS OF BURIED ELECTRIC, TELEPHONE AND GAS FACILITIES. (48 HOURS NOTIFICATION IS REQUIRED.)
- THE CONTRACTOR SHALL COORDINATE CONSTRUCTION ACTIVITIES WITH UTILITY COMPANIES.
- THE CONTRACTOR WILL NOT BE ALLOWED TO SET UP A YARD OR FIELD OFFICE ON STATE PROPERTY WITHOUT WRITTEN PERMISSION FROM THE DEPARTMENT.
- THE CONTRACTOR SHALL CALL STATE ELECTRICAL CONTRACTOR AT (773) 287-7600 TO LOCATE STATE OWNED FACILITIES.
- THE CONTRACTOR SHALL WORK IN THE DIRECTION OF TRAFFIC.
- THE CONTRACTOR WILL NOT BE ALLOWED TO STORE MATERIALS OVERNIGHT IN THE MEDIAN.

| REVISIONS | |
|-----------|------|
| NAME | DATE |
| | |
| | |
| | |
| | |
| | |
| | |
| | |
| | |
| | |
| | |

ILLINOIS DEPARTMENT OF TRANSPORTATION

**INTERSTATE 55
INDEX OF SHEETS
LIST OF STATE STANDARDS
PLAN NOTES**

SCALE: VERT. : NONE
HORIZ. : NONE
DATE

DRAWN BY: HMO
CHECKED BY:

| SUMMARY OF QUANTITIES | | | CONSTRUCTION TYPE CODE | | | | | |
|-----------------------|---|--------------|------------------------|----------------------------------|--|--|--|--|
| CODE NO | ITEM | UNIT | TOTAL QUANTITIES | 90% FED. 10% STATE URBAN SFTY-4A | | | | |
| 25000750 | MOWING | ACRE | 1.89 | 1.89 | | | | |
| 67000400 | ENGINEER'S FIELD OFFICE, TYPE A | CAL MO | 3 | 3 | | | | |
| 67100100 | MOBILIZATION | L SUM | 1 | 1 | | | | |
| X0325606 | HIGH TENSION CABLE MEDIAN BARRIER DEMONSTRATION | EACH | 1 | 1 | | | | |
| X0325589 | HIGH TENSION CABLE MEDIAN BARRIER | FOOT | 8250 | 8250 | | | | |
| X0325590 | HIGH TENSION CABLE MEDIAN BARRIER TERMINAL | EACH | 2 | 2 | | | | |
| X7011015 | TRAFFIC CONTROL AND PROTECTION (EXPRESSWAYS) | L SUM | 1 | 1 | | | | |
| Z0013798 | CONSTRUCTION LAYOUT | L SUM | 1 | 1 | | | | |

| SUMMARY OF QUANTITIES | | | CONSTRUCTION TYPE CODE | | | | | |
|-----------------------|------|------|------------------------|--|--|--|--|--|
| CODE NO | ITEM | UNIT | TOTAL QUANTITIES | | | | | |
| | | | | | | | | |

© NON-PARTICIPATING

| REVISIONS | |
|-----------|------|
| NAME | DATE |
| | |
| | |

ILLINOIS DEPARTMENT OF TRANSPORTATION
SUMMARY OF QUANTITIES

Rev.

| | | | | |
|-----------------------|-------------|----------|------------------|-----------|
| F.A.I. RTE. | SECTION | COUNTY | TOTAL SHEETS | SHEET NO. |
| 55 | 2006-038 GR | WILL | 13 | 4 |
| STA. | | TO STA. | | |
| FED. ROAD DIST. NO. 1 | | ILLINOIS | FED. AID PROJECT | |

CONTRACT 60899

HIGH TENSION CABLE GUARDRAIL

| STA. | TO | STA. | TOTAL LENGTH (FT.) |
|---------|----|---------|--------------------|
| 1167+00 | TO | 1249+50 | 8250 |
| TOTAL | | | 8250 |

HIGH TENSION CABLE GUARDRAIL TERMINAL

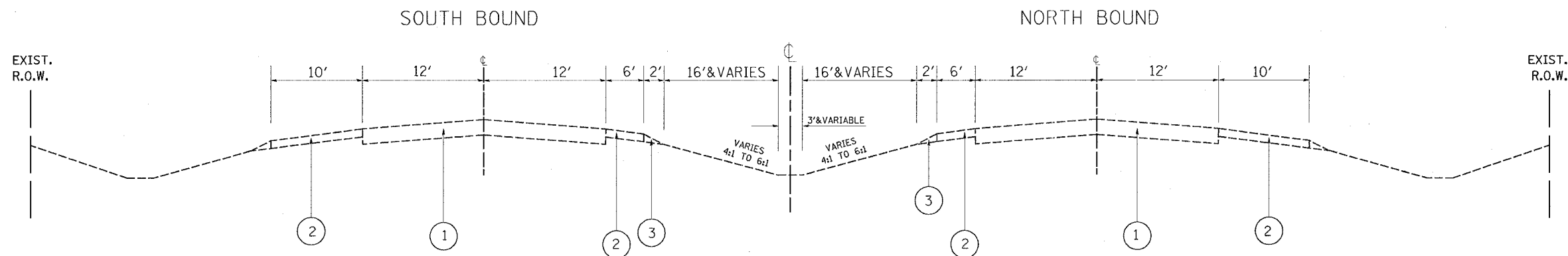
| STA. | UNIT (EACH) |
|---------|-------------|
| 1167+00 | 1 |
| 1249+50 | 1 |
| TOTAL | 2 |

* THE FINAL LOCATIONS OF THE HIGH TENSION CABLE GUARDRAIL TERMINALS WILL BE DETERMINED IN THE FIELD BY THE ENGINEER

| REVISIONS | | ILLINOIS DEPARTMENT OF TRANSPORTATION |
|-----------|--------------|---|
| NAME | DATE | |
| | | INTERSTATE 55 SCHEDULE OF QUANTITIES |
| | | |
| | | |
| | | |
| | | |
| | | |
| | | |
| | | |
| | | |
| | | |
| SCALE: | VERT. : NONE | DRAWN BY: HMO |
| DATE | HORIZ. : | CHECKED BY: |

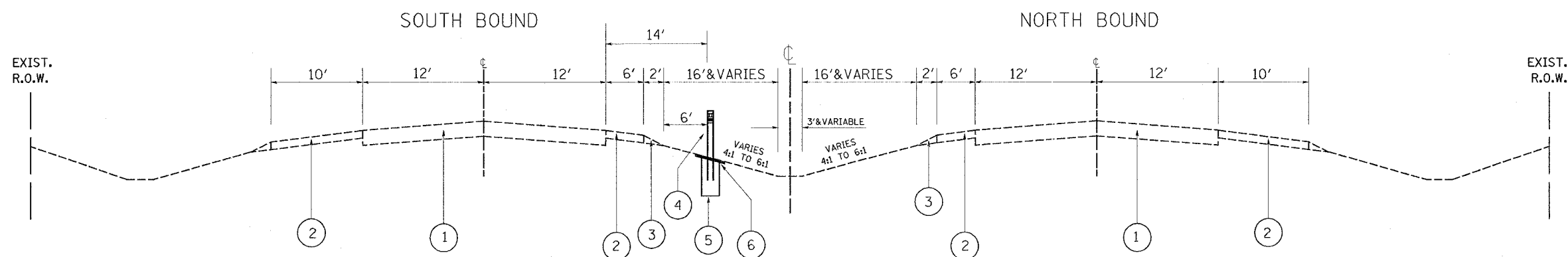
| | | | | |
|-----------------------|-------------|---------------------------|--------------|-----------|
| F.A.I. RTE. | SECTION | COUNTY | TOTAL SHEETS | SHEET NO. |
| 55 | 2006-038 GR | WILL | 12 | 5 |
| STA. | | TO STA. | | |
| FED. ROAD DIST. NO. 1 | | ILLINOIS FED. AID PROJECT | | |

CONTRACT 60899



I-55
EXISTING TYPICAL CROSS SECTION
STA 1167+00 TO STA 1249+50

(LOOKING NORTH)



I-55
PROPOSED TYPICAL CROSS SECTION
STA 1167+00 TO STA 1249+50

(LOOKING NORTH)

LEGEND

- ① EXISTING 10" P.C.C. PAVEMENT
- ② EXISTING BIT. SHOULDER
- ③ EXISTING AGGREGATE SHOULDER, 8"
- ④ PROPOSED HIGH TENSION CABLE MEDIAN BARRIER
- ⑤ CONCRETE FOUNDATION - INCLUDED IN THE COST OF THE APPLICABLE HIGH TENSION CABLE MEDIAN BARRIER PAY ITEM
- ⑥ PROPOSED MOWING, (10' WIDE)

THE MINIMUM DEPTH OF THE CONCRETE FOUNDATION SHALL BE 42"

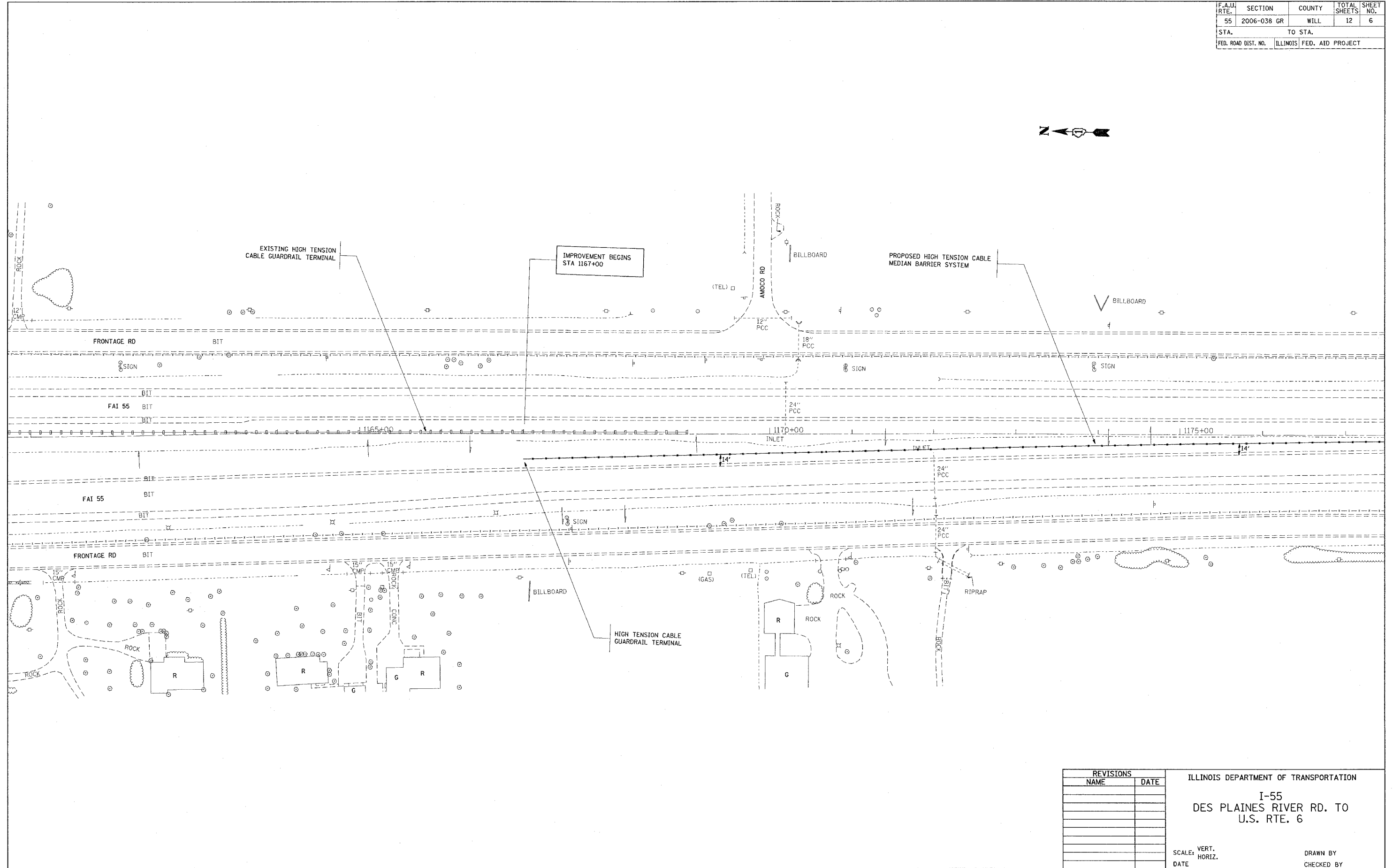
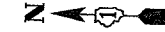
| REVISIONS | |
|-----------|------|
| NAME | DATE |
| | |
| | |
| | |
| | |
| | |
| | |
| | |
| | |
| | |
| | |

ILLINOIS DEPARTMENT OF TRANSPORTATION
INTERSTATE 55
EXISTING AND PROPOSED TYPICAL SECTION

SCALE : NONE
10/27/2006

DRAWN BY: HMO
CHECKED BY:

| F.A.U. RTE. | SECTION | COUNTY | TOTAL SHEETS | SHEET NO. |
|---------------------|-------------|------------------|--------------|-----------|
| 55 | 2006-038 GR | WILL. | 12 | 6 |
| STA. | | TO STA. | | |
| FED. ROAD DIST. NO. | ILLINOIS | FED. AID PROJECT | | |



PLOT DATE = 10/27/2006
 PLOT SCALE = 50' = 1" / AN
 USER NAME = csmrnh

| REVISIONS | |
|-----------|------|
| NAME | DATE |
| | |
| | |
| | |
| | |
| | |
| | |
| | |
| | |
| | |
| | |

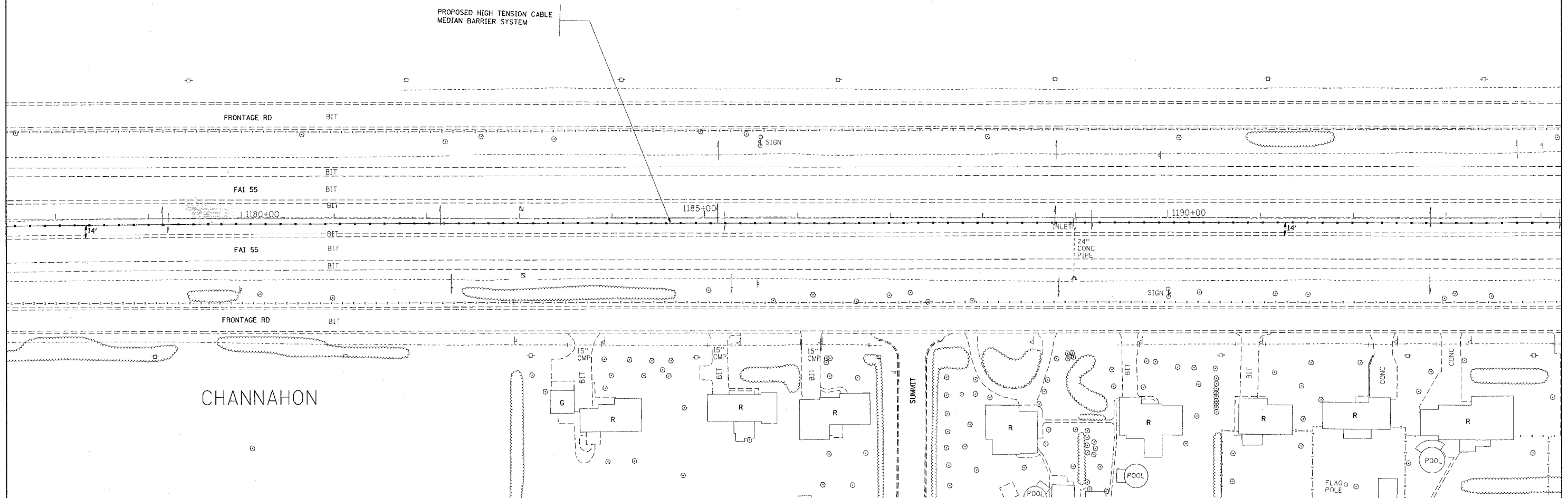
ILLINOIS DEPARTMENT OF TRANSPORTATION
 I-55
 DES PLAINES RIVER RD. TO
 U.S. RTE. 6

SCALE: VERT. _____
 HORIZ. _____
 DATE _____
 DRAWN BY _____
 CHECKED BY _____

| F.A.I. RTE. | SECTION | COUNTY | TOTAL SHEETS | SHEET NO. |
|---------------------|-------------|------------------|--------------|-----------|
| 55 | 2006-038 GR | WILL | 12 | 7 |
| STA. | | TO STA. | | |
| FED. ROAD DIST. NO. | ILLINOIS | FED. AID PROJECT | | |



PROPOSED HIGH TENSION CABLE
MEDIAN BARRIER SYSTEM



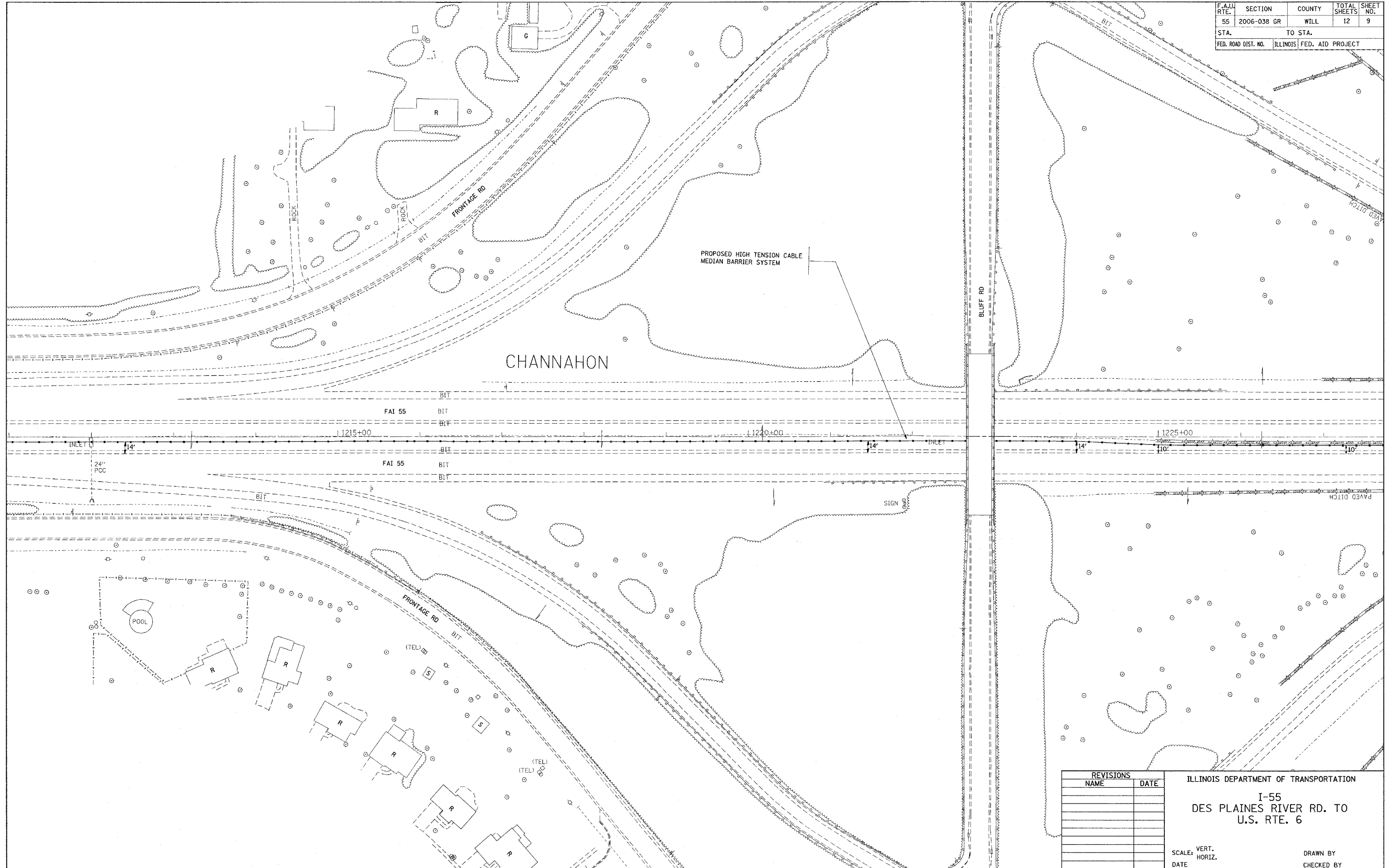
PLOT DATE = 10/27/2006
 FILE NAME = c:\projects\ad107707\ah\channa\p.dgn
 PLOT SCALE = 1/8\"/>

| REVISIONS | |
|-----------|------|
| NAME | DATE |
| | |
| | |
| | |
| | |
| | |
| | |
| | |
| | |
| | |
| | |

ILLINOIS DEPARTMENT OF TRANSPORTATION
 I-55
 DES PLAINES RIVER RD. TO
 U.S. RTE. 6

SCALE: VERT.
 HORIZ.
 DATE
 DRAWN BY
 CHECKED BY

| F.A.U. RTE. | SECTION | COUNTY | TOTAL SHEETS | SHEET NO. |
|---------------------|-------------|---------------------------|--------------|-----------|
| 55 | 2006-038 GR | WILL | 12 | 9 |
| STA. | | TO STA. | | |
| FED. ROAD DIST. NO. | | ILLINOIS FED. AID PROJECT | | |

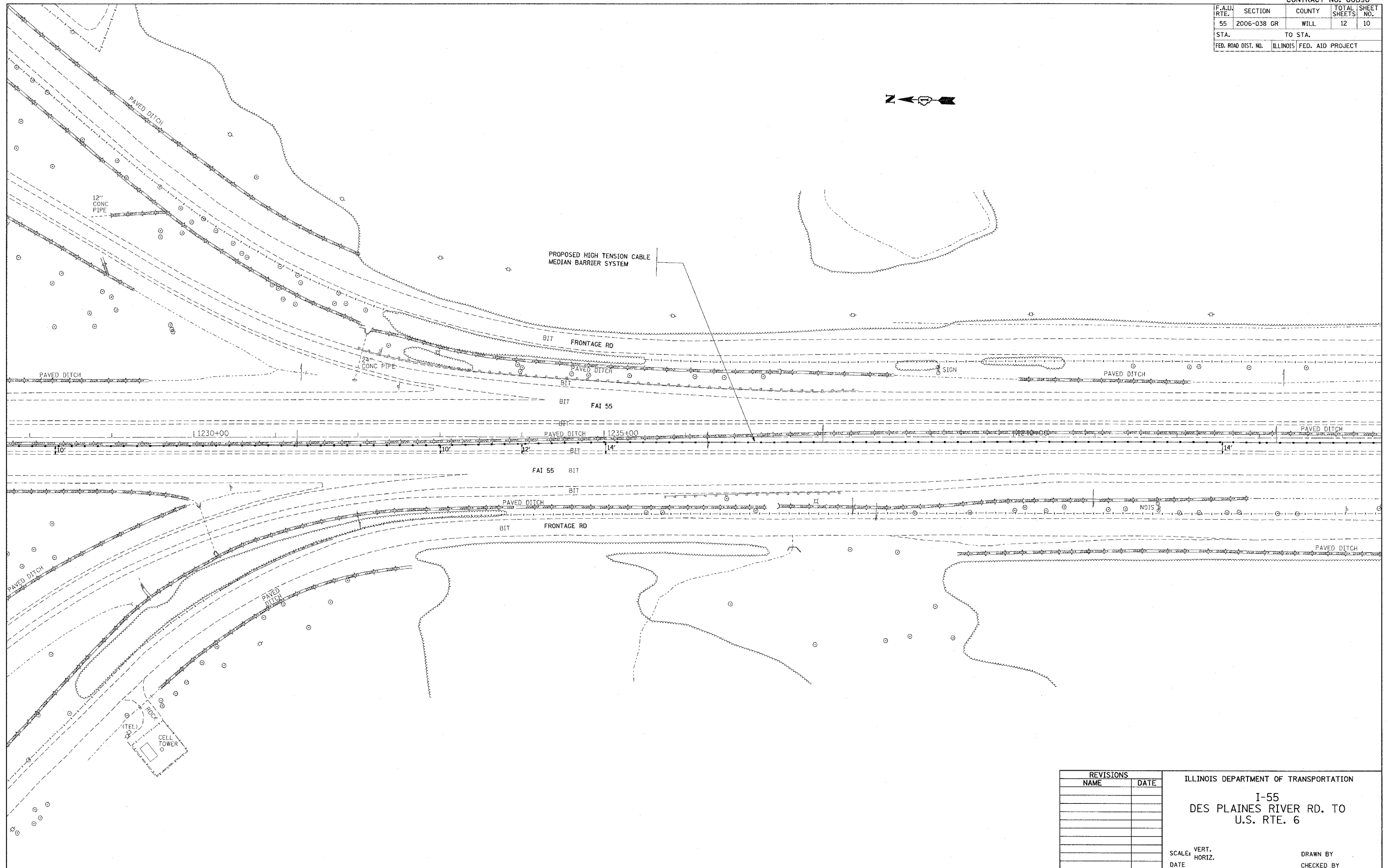
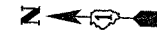


PLOT DATE = 10/27/2006
 FILE NAME = c:\projects\dl07707\ah_dwg.dgn
 PLOT SCALE = 58.0000 / IN.
 USER NAME = csmenim

| REVISIONS | |
|-----------|------|
| NAME | DATE |
| | |
| | |
| | |
| | |
| | |
| | |
| | |
| | |
| | |
| | |

ILLINOIS DEPARTMENT OF TRANSPORTATION
 I-55
 DES PLAINES RIVER RD. TO
 U.S. RTE. 6
 SCALE: VERT.
 DATE: HORIZ.
 DRAWN BY
 CHECKED BY

| F.A.U. RTE. | SECTION | COUNTY | TOTAL SHEETS | SHEET NO. |
|---------------------|-------------|------------------|--------------|-----------|
| 55 | 2006-038 GR | WILL. | 12 | 10 |
| STA. | | TO STA. | | |
| FED. ROAD DIST. NO. | ILLINOIS | FED. AID PROJECT | | |



PLOT DATE = 10/27/2005
 FILE NAME = c:\p\proj\ista\107707\sh...dgn
 USER NAME = gsm
 PLOT SCALE = 5000000 / IN.

| REVISIONS | |
|-----------|------|
| NAME | DATE |
| | |
| | |
| | |
| | |
| | |
| | |
| | |
| | |
| | |
| | |

ILLINOIS DEPARTMENT OF TRANSPORTATION
 I-55
 DES PLAINES RIVER RD. TO
 U.S. RTE. 6

SCALE: VERT. _____
 HORIZ. _____
 DATE _____
 DRAWN BY _____
 CHECKED BY _____

CONTRACT NO. 60890

| F.A.U. RTE. | SECTION | COUNTY | TOTAL SHEETS | SHEET NO. |
|---------------------|-------------|----------|------------------|-----------|
| 55 | 2006-038 GR | WILL | 12 | 11 |
| STA. | | TO STA. | | |
| FED. ROAD DIST. NO. | | ILLINOIS | FED. AID PROJECT | |



PROPOSED HIGH TENSION CABLE
MEDIAN BARRIER SYSTEM

IMPROVEMENT ENDS
STA 1249+50

FRONTAGE RD ROCK / BIT

SIGN

BIT

BIT FAI 55

BIT

JERSEY BARRIER

PAVED DITCH

INLET

PAVED DITCH

BIT FAI 55

BIT

PAVED DITCH

PAVED DITCH

SIGN

HIGH TENSION CABLE
GUARDRAIL TERMINAL

RIVER RD

BIT

PLOT DATE = 10/27/2006
PLOT SCALE = 500000 / IN.
USER NAME = csmashin

| REVISIONS | |
|-----------|------|
| NAME | DATE |
| | |
| | |
| | |
| | |
| | |
| | |
| | |
| | |
| | |
| | |

ILLINOIS DEPARTMENT OF TRANSPORTATION
I-55
DES PLAINES RIVER RD. TO
U.S. RTE. 6

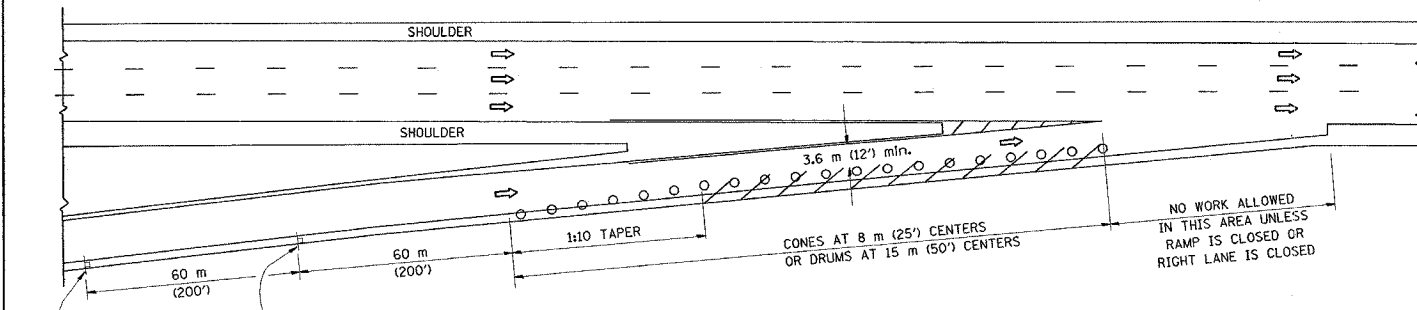
SCALE: VERT.
HORIZ.
DATE

DRAWN BY
CHECKED BY

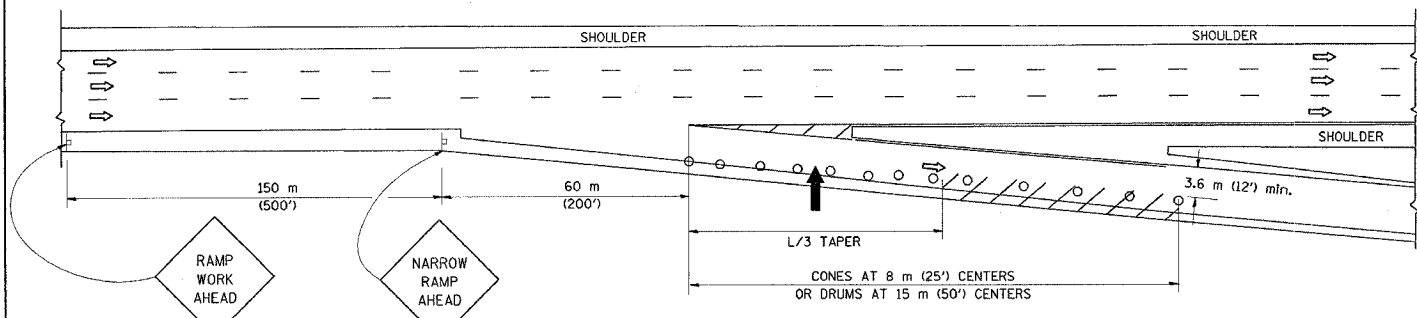
| F.A.U. RTE. | SECTION | COUNTY | TOTAL SHEETS | SHEET NO. |
|---------------------|-------------|----------|------------------|-----------|
| 55 | 2006-038 GR | WILL | 12 | 12 |
| STA. | | TO STA. | | |
| FED. ROAD DIST. NO. | | ILLINOIS | FED. AID PROJECT | |

PARTIAL RAMP CLOSURE DETAILS

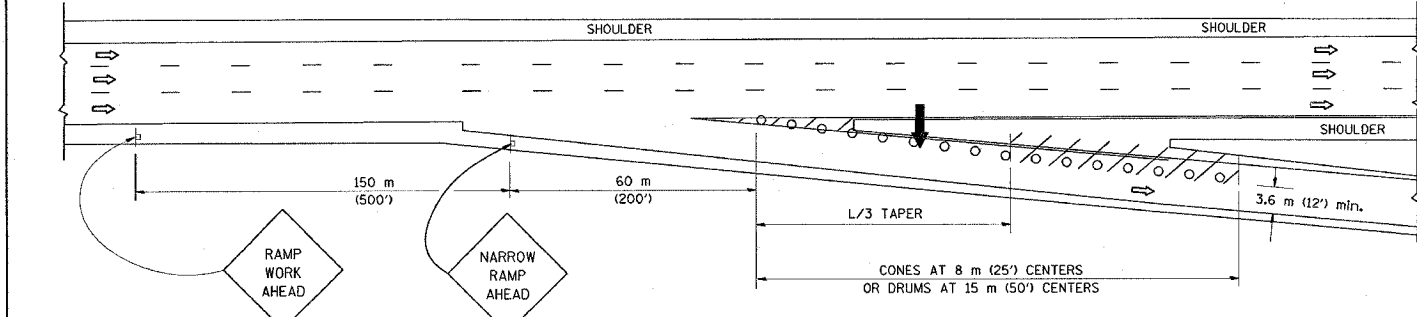
SHOULDER CLOSURE DETAILS



TYPICAL ENTRANCE RAMP



TYPICAL EXIT RAMP



TYPICAL EXIT RAMP

SYMBOLS

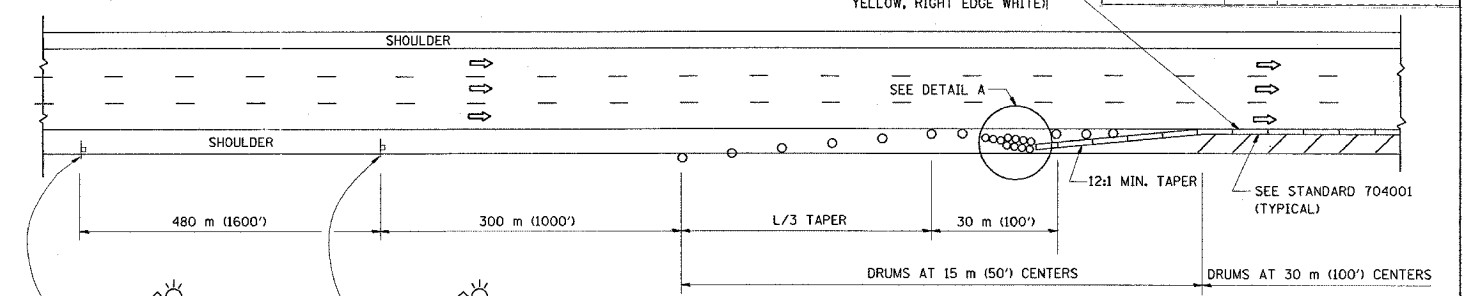
- ARROWBOARD
- WORK AREA
- SIGN ON PORTABLE OR PERMANENT SUPPORT
- FLAGGER WITH CONTROL SIGN
- DRUM WITH MONO-DIRECTIONAL STEADY BURNING LIGHT
- CONES - 700 (28) IN HEIGHT

GENERAL NOTES

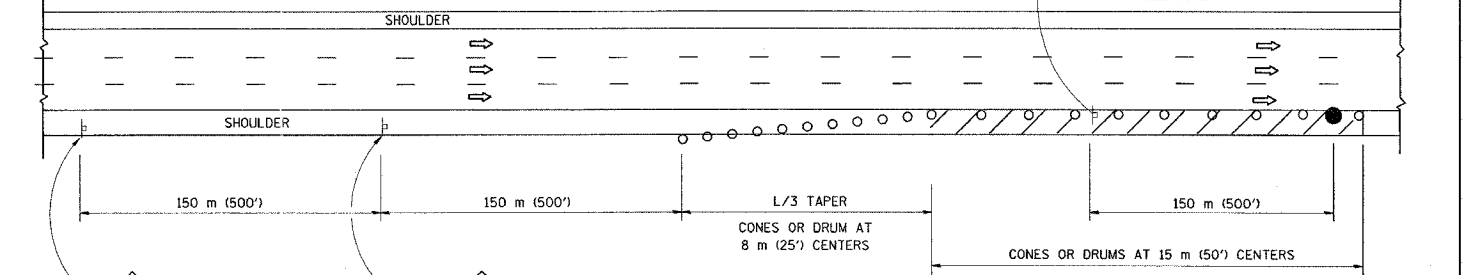
- THE "L" DISTANCE EQUALS:

| | |
|------------------|---------------------|
| SPEED LIMIT | FORMULAS |
| 80 km/h (45 mph) | METRIC ENGLISH |
| OR GREATER: | L=0.65(W/S) L=(W/S) |

W = WIDTH OF OFFSET IN METERS (FEET)
 S = NORMAL POSTED SPEED KM/H (MPH)
- PLASTIC DRUMS WITH HIGH PERFORMANCE REFLECTIVE SHEETING AND STEADY BURNING LIGHTS ARE REQUIRED FOR ALL NIGHTTIME CLOSURES.
- ALL SIGNS SHALL BE POST MOUNTED IF THE CLOSURE TIME EXCEEDS FOUR DAYS.
- FLASHING LIGHTS SHALL BE USED DURING THE HOURS OF DARKNESS AND SHALL BE INSTALLED ABOVE THE FIRST TWO SETS OF SIGNS.



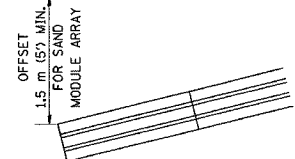
PERMANENT SHOULDER CLOSURE



DAYTIME SHOULDER CLOSURE

THIS DETAIL IS USED WHERE:
 1. VEHICLES, EQUIPMENT, WORKERS OR THEIR ACTIVITIES ENCR OACH IN AN AREA CLOSER THAN 4.5 m (15') TO THE EDGE OF PAVEMENT FOR A PERIOD IN EXCESS OF 15 MINUTES.

ARRAY DESIGN PER MANUFACTURER TO BE NCHRP 350 COMPLIANT FOR POSTED SPEED.



DETAIL "A" IMPACT ATTENUATOR, TEMPORARY (SEE NOTE 5)

- THE IMPACT ATTENUATOR, TEMPORARY IS NOT REQUIRED WHEN THE TEMPORARY CONCRETE BARRIER WALL IS PROTECTED BY OR IS TIED INTO THE EXISTING GUARDRAIL. IF OFFSET IS LESS THAN 5 FEET USE "TRAFFIC BARRIER TERMINAL, TYPE III, TEMPORARY" DEVICE TO MEET NCHRP350 FOR POSTED SPEED.
- AUTHORIZATION FROM THE DISTRICT'S BUREAU OF TRAFFIC IS REQUIRED FOR ALL FREEWAY CLOSURES.
- THE FLAGGER AND FLAGGER SIGN ARE REQUIRED AT THE ABOVE WORK SITES WHEN:
 - FOUR OR MORE WORK VEHICLES ENTER THE TRAFFIC LANES IN A ONE HOUR PERIOD.
 - THE WORK AVTIVITY REQUIRES FREQUENT ENCR OACHMENT INTO THE LANE OPEN TO TRAFFIC.
 THE FLAGGER SHALL BE STATIONED APPROXIMATELY 30 m (100') TO 60 m (200') IN ADVANCE OF THE WORKERS.

ALL DIMENSIONS ARE IN MILLIMETERS (INCHES) UNLESS OTHERWISE SHOWN.

| REVISIONS | |
|-----------|-------|
| NAME | DATE |
| DWS | 11/96 |
| JAF | 12/02 |
| NCHRP 350 | 04/03 |
| JAF | 2/06 |

ILLINOIS DEPARTMENT OF TRANSPORTATION
 TRAFFIC CONTROL DETAILS
 FOR FREEWAY
 SHOULDER CLOSURES
 PARTIAL RAMP CLOSURES

DESIGNED BY: DWS
 DRAWN BY:
 CHECKED BY:
 SCALE: NONE
 DATE: 10/18/2006

PLT DATE = 10/18/2006
 FILE NAME = w:\chris\06\1017.dgn
 USER = chris
 PLOT DATE = 10/18/2006 4:32:04 PM User=chris