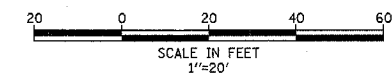


F.A.P. RTE.	SECTION	COUNTY	TOTAL SHEETS	SHEET NO.
372	2006-039TS	COOK	36	9
STA.	TO STA.			
FED. ROAD DIST. NO.	ILLINOIS	FED. AID PROJECT		
CONTRACT NO. 60C01				



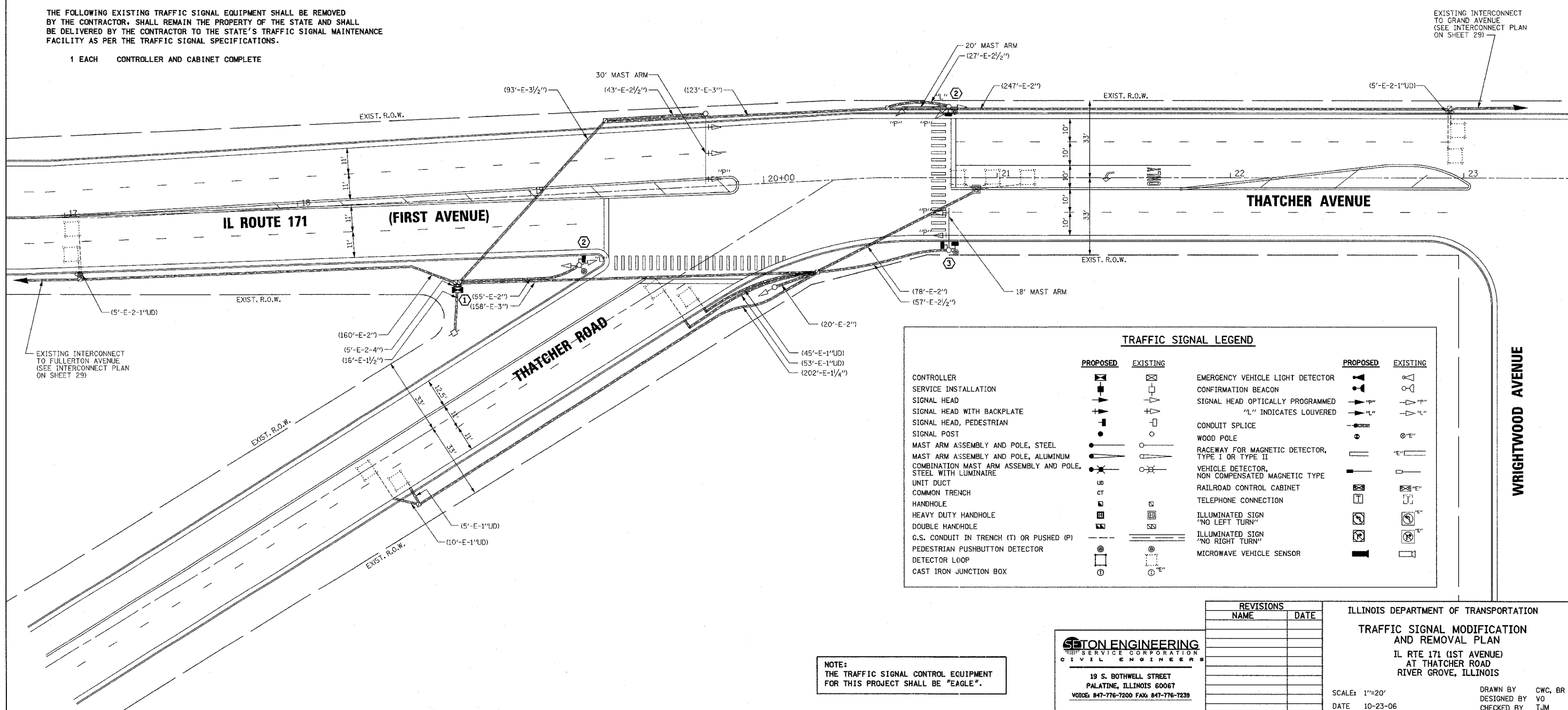
- CONSTRUCTION NOTES:**
- 1 REMOVE EXISTING CONTROLLER AND CABINET, INSTALL NEW LOCAL CONTROLLER AND TYPE IV CABINET, RE-USE EXISTING FOUNDATION.
  - 2 REMOVE EXISTING PEDESTRIAN SIGNAL HEAD, 1-FACE, BRACKET MOUNTED, INSTALL NEW PEDESTRIAN SIGNAL HEAD, 1-FACE, BRACKET-MOUNTED.
  - 3 REMOVE EXISTING PEDESTRIAN SIGNAL HEAD, 2-FACE, BRACKET MOUNTED, INSTALL NEW PEDESTRIAN SIGNAL HEAD, 2-FACE, BRACKET-MOUNTED.
  - 4 THE CONTRACTOR SHALL BE REQUIRED TO MAINTAIN THE OPERATION OF THE TRAFFIC SIGNALS DURING THE ENTIRE PROJECT.

THE FOLLOWING ITEMS SHALL BE REMOVED BY THE CONTRACTOR AND SHALL BE DISPOSED OF BY THEM OUTSIDE THE RIGHT-OF-WAY AT THEIR EXPENSE. THE SALVAGE VALUE OF THE REMOVED EQUIPMENT SHALL BE REFLECTED IN THE CONTRACT BID PRICE.

- 2 EACH PEDESTRIAN SIGNAL HEAD, 1-FACE, BRACKET MOUNTED
- 1 EACH PEDESTRIAN SIGNAL HEAD, 2-FACE, BRACKET MOUNTED
- 5 EACH INDUCTIVE LOOP DETECTOR

THE FOLLOWING EXISTING TRAFFIC SIGNAL EQUIPMENT SHALL BE REMOVED BY THE CONTRACTOR, SHALL REMAIN THE PROPERTY OF THE STATE AND SHALL BE DELIVERED BY THE CONTRACTOR TO THE STATE'S TRAFFIC SIGNAL MAINTENANCE FACILITY AS PER THE TRAFFIC SIGNAL SPECIFICATIONS.

- 1 EACH CONTROLLER AND CABINET COMPLETE



TRAFFIC SIGNAL LEGEND			
	PROPOSED	EXISTING	
CONTROLLER	[Symbol]	[Symbol]	EMERGENCY VEHICLE LIGHT DETECTOR
SERVICE INSTALLATION	[Symbol]	[Symbol]	CONFIRMATION BEACON
SIGNAL HEAD	[Symbol]	[Symbol]	SIGNAL HEAD OPTICALLY PROGRAMMED
SIGNAL HEAD WITH BACKPLATE	[Symbol]	[Symbol]	"L" INDICATES LOUVERED
SIGNAL HEAD, PEDESTRIAN	[Symbol]	[Symbol]	CONDUIT SPLICE
SIGNAL POST	[Symbol]	[Symbol]	WOOD POLE
MAST ARM ASSEMBLY AND POLE, STEEL	[Symbol]	[Symbol]	RACEWAY FOR MAGNETIC DETECTOR, TYPE I OR TYPE II
MAST ARM ASSEMBLY AND POLE, ALUMINUM	[Symbol]	[Symbol]	VEHICLE DETECTOR, NON COMPENSATED MAGNETIC TYPE
COMBINATION MAST ARM ASSEMBLY AND POLE, STEEL WITH LUMINAIRE	[Symbol]	[Symbol]	RAILROAD CONTROL CABINET
UNIT DUCT	[Symbol]	[Symbol]	TELEPHONE CONNECTION
COMMON TRENCH	[Symbol]	[Symbol]	ILLUMINATED SIGN "NO LEFT TURN"
HANDHOLE	[Symbol]	[Symbol]	ILLUMINATED SIGN "NO RIGHT TURN"
HEAVY DUTY HANDHOLE	[Symbol]	[Symbol]	MICROWAVE VEHICLE SENSOR
DOUBLE HANDHOLE	[Symbol]	[Symbol]	
G.S. CONDUIT IN TRENCH (T) OR PUSHED (P)	[Symbol]	[Symbol]	
PEDESTRIAN PUSHBUTTON DETECTOR	[Symbol]	[Symbol]	
DETECTOR LOOP	[Symbol]	[Symbol]	
CAST IRON JUNCTION BOX	[Symbol]	[Symbol]	

NOTE: THE TRAFFIC SIGNAL CONTROL EQUIPMENT FOR THIS PROJECT SHALL BE "EAGLE".

**SETON ENGINEERING**  
 SERVICE CORPORATION  
 CIVIL ENGINEERS  
 19 S. BOTHWELL STREET  
 PALATINE, ILLINOIS 60067  
 VOICE: 847-776-7200 FAX: 847-776-7239

REVISIONS	
NAME	DATE

ILLINOIS DEPARTMENT OF TRANSPORTATION  
 TRAFFIC SIGNAL MODIFICATION AND REMOVAL PLAN  
 IL RTE 171 (1ST AVENUE) AT THATCHER ROAD  
 RIVER GROVE, ILLINOIS  
 SCALE: 1"=20'  
 DATE: 10-23-06  
 DRAWN BY: CWC, BR  
 DESIGNED BY: VO  
 CHECKED BY: TJM