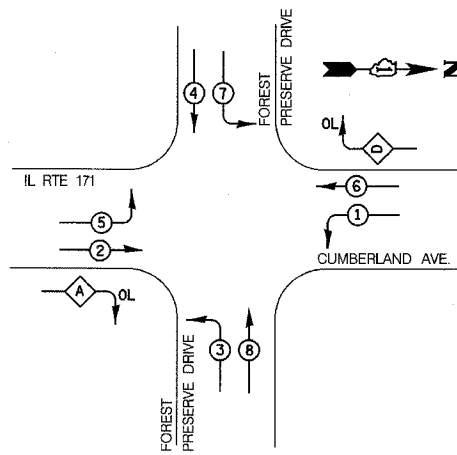
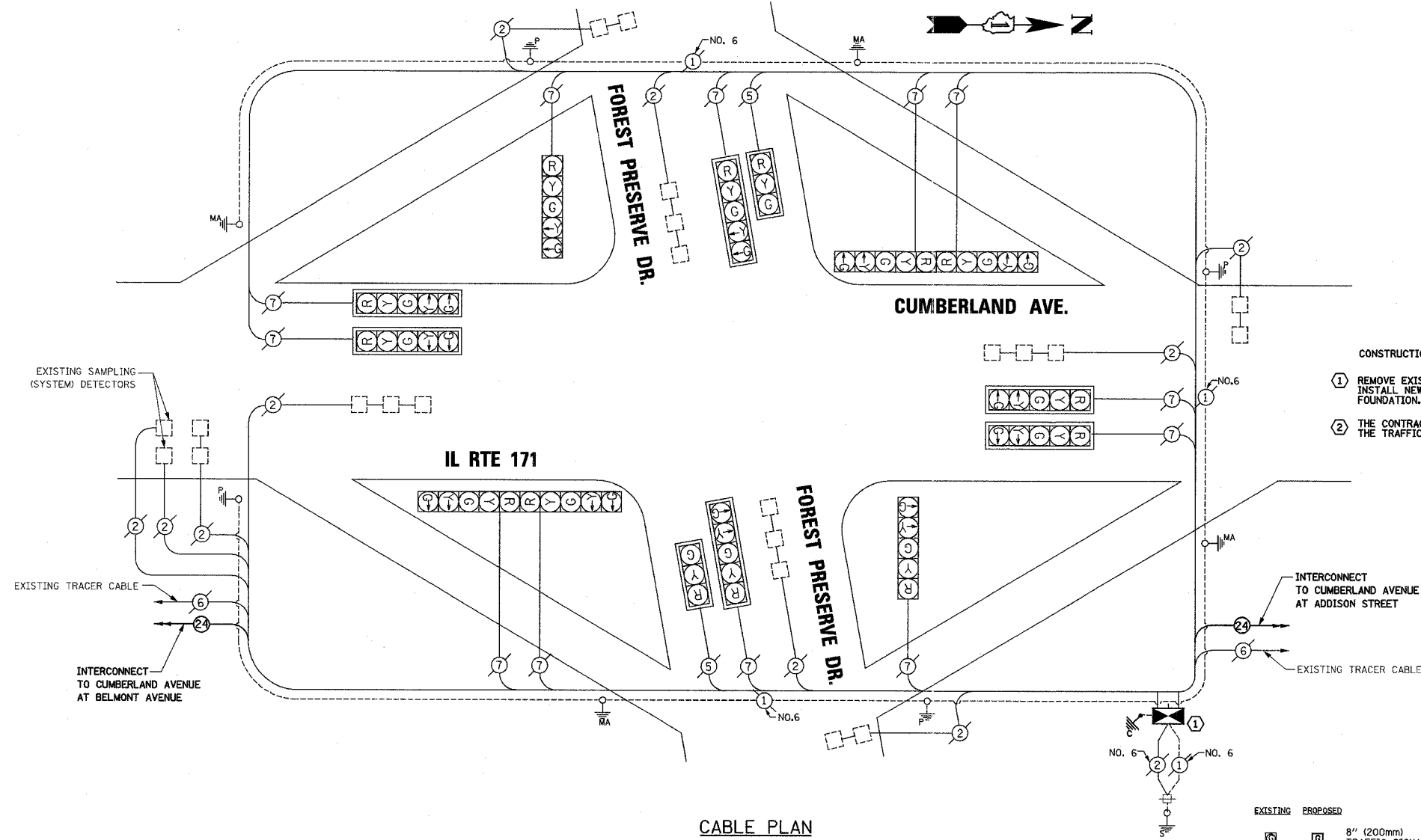
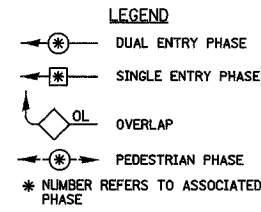


F.A.P. RTE.	SECTION	COUNTY	TOTAL SHEETS	SHEET NO.
372	2006-039TS	COOK	36	18
STA.		TO STA.		
FED. ROAD DIST. NO.		ILLINOIS FED. AID PROJECT		
CONTRACT NO. 60C01				

CONTROLLER SEQUENCE

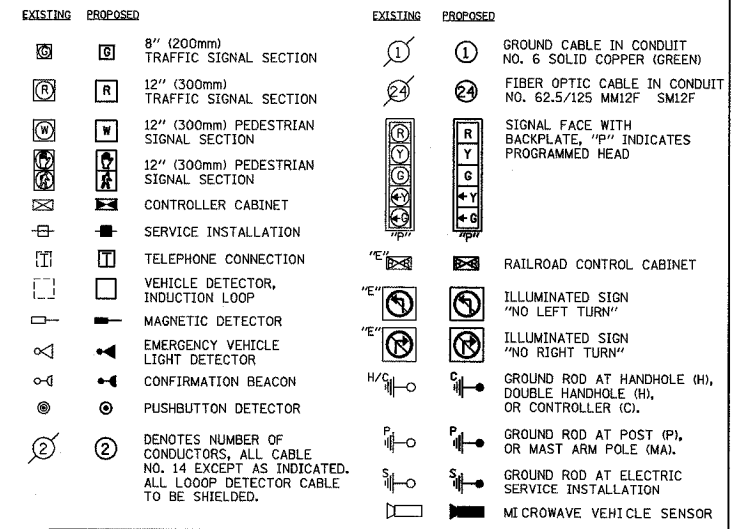


PHASE DESIGNATION DIAGRAM



- CONSTRUCTION NOTES:**
- REMOVE EXISTING LOCAL CONTROLLER, MASTER CONTROLLER, AND CABINET. INSTALL NEW LOCAL CONTROLLER AND TYPE IV CABINET, RE-USE EXISTING FOUNDATION.
 - THE CONTRACTOR SHALL BE REQUIRED TO MAINTAIN THE OPERATION OF THE TRAFFIC SIGNALS DURING THE ENTIRE PROJECT.

CABLE PLAN LEGEND



SCHEDULE OF QUANTITIES

ITEM	UNIT	QUANTITY
MAINTENANCE OF EXISTING TRAFFIC SIGNAL INSTALLATION	EACH	1
FULL ACTUATED CONTROLLER AND TYPE IV CABINET, SPECIAL TRANSCEIVER, FIBER OPTIC	EACH	1
INDUCTIVE LOOP DETECTOR	EACH	10
REMOVE EXISTING TRAFFIC SIGNAL EQUIPMENT	EACH	1

I.D.O.T. TRAFFIC SIGNAL INSTALLATION ELECTRICAL SERVICE REQUIREMENTS

TYPE	NO. LAMPS	WATTAGE	X% OPERATION	TOTAL WATTAGE
SIGNAL (RED)	14	135	0.50	945
(YELLOW)	14	135	0.25	472.5
(GREEN)	14	135	0.25	472.5
ARROW	24	135	0.10	324
PED. SIGNAL	-	90	1.00	-
CONTROLLER	1	100	1.00	100
TOTAL =				2314

ENERGY COSTS - BILLED TO: CITY OF CHICAGO
 ADDRESS: 121 N. LASALLE STREET
 CHICAGO, IL 60602

ENERGY SUPPLY - CONTACT: LARRY KESLINKE
 PHONE: (708) 410-5314
 COMPANY: COM ED

FOUNDATION (DEPTH)	(FT.) (m)	CABLE SLACK	(FT.) (m)	VERTICAL	(FT.) (m)
TYPE A - POST	4 (1.2)	HANDHOLE	6.5 (2.0)	ALL FOUNDATIONS	3.5 (1.0)
D - FOUNDATION	4 (1.2)	DOUBLE HANDHOLE	13 (4.0)	MAST ARM (L) POLE	20' + L - 2 = (6m+L-0.6m)=
C - M. ARM POLE	2 (1.0)	SIGNAL POST	2 (0.6)	BRACKET MOUNTED	13 (4.0)
24" (600mm)	10 (3.0)	CONTROLLER CAB.	1 (0.5)	PED. PUSHBUTTON	4 (1.2)
30" (750mm)	15 (4.6)	FIBER OPTIC	13 (4.0)	ELECTRIC SERVICE	13.5 (4.1)
		ELECTRIC SERVICE	1 (0.5)	SERVICE TO GROUND	13.5 (4.1)
		GROUND CABLE	1 (0.5)	POST MOUNTED	6 (1.8)

NOTE:
THE TRAFFIC SIGNAL CONTROL EQUIPMENT FOR THIS PROJECT SHALL BE "EAGLE".

SETON ENGINEERING
 SERVICE CORPORATION
 CIVIL ENGINEERS

19 S. BOTHWELL STREET
 PALATINE, ILLINOIS 60067
 VOICES: 847-776-7200 FAX: 847-776-7239

REVISIONS

NAME	DATE

ILLINOIS DEPARTMENT OF TRANSPORTATION
**CABLE PLAN
 PHASE DESIGNATION DIAGRAM
 AND SCHEDULE OF QUANTITIES**
 IL RTE 171 (CUMBERLAND AVENUE)
 AT FOREST PRESERVE DRIVE
 CHICAGO, ILLINOIS

SCALE: N.T.S.
 DATE: 10-23-06

DRAWN BY: CWC, BR
 DESIGNED BY: VO
 CHECKED BY: TJM