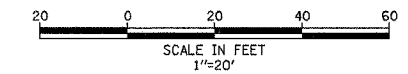


|                     |            |                  |              |           |
|---------------------|------------|------------------|--------------|-----------|
| F.A.P. RTE.         | SECTION    | COUNTY           | TOTAL SHEETS | SHEET NO. |
| 372                 | 2006-039TS | COOK             | 36           | 25        |
| STA.                |            | TO STA.          |              |           |
| FED. ROAD DIST. NO. | ILLINOIS   | FED. AID PROJECT |              |           |
| CONTRACT NO. 60C01  |            |                  |              |           |



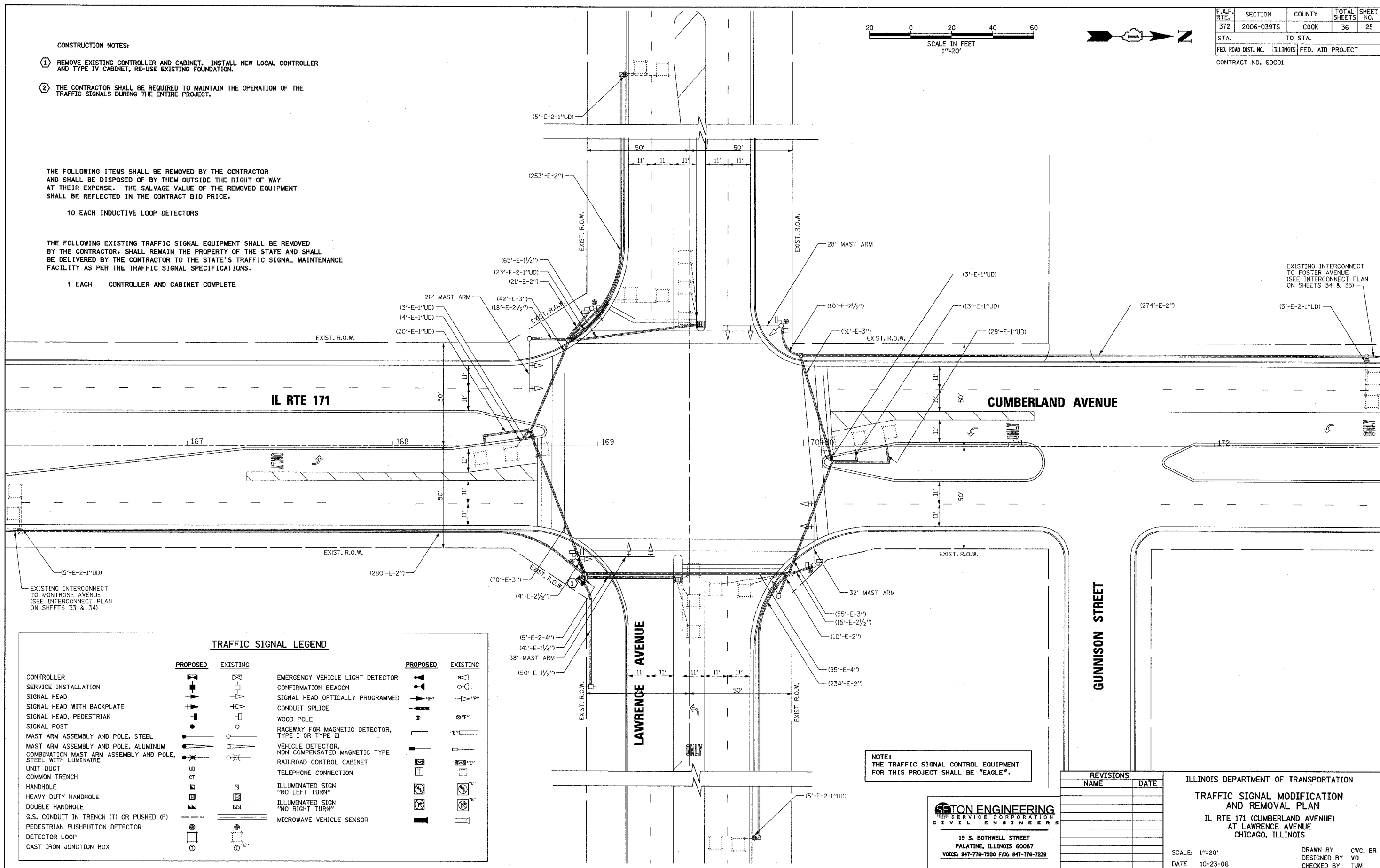
- CONSTRUCTION NOTES:**
- REMOVE EXISTING CONTROLLER AND CABINET. INSTALL NEW LOCAL CONTROLLER AND TYPE IV CABINET, RE-USE EXISTING FOUNDATION.
  - THE CONTRACTOR SHALL BE REQUIRED TO MAINTAIN THE OPERATION OF THE TRAFFIC SIGNALS DURING THE ENTIRE PROJECT.

THE FOLLOWING ITEMS SHALL BE REMOVED BY THE CONTRACTOR AND SHALL BE DISPOSED OF BY THEM OUTSIDE THE RIGHT-OF-WAY AT THEIR EXPENSE. THE SALVAGE VALUE OF THE REMOVED EQUIPMENT SHALL BE REFLECTED IN THE CONTRACT BID PRICE.

10 EACH INDUCTIVE LOOP DETECTORS

THE FOLLOWING EXISTING TRAFFIC SIGNAL EQUIPMENT SHALL BE REMOVED BY THE CONTRACTOR. SHALL REMAIN THE PROPERTY OF THE STATE AND SHALL BE DELIVERED BY THE CONTRACTOR TO THE STATE'S TRAFFIC SIGNAL MAINTENANCE FACILITY AS PER THE TRAFFIC SIGNAL SPECIFICATIONS.

1 EACH CONTROLLER AND CABINET COMPLETE



EXISTING INTERCONNECT TO MONTROSE AVENUE (SEE INTERCONNECT PLAN ON SHEETS 33 & 34)

EXISTING INTERCONNECT TO FOSTER AVENUE (SEE INTERCONNECT PLAN ON SHEETS 34 & 35)

**TRAFFIC SIGNAL LEGEND**

|  | PROPOSED | EXISTING |  | PROPOSED | EXISTING |
|--|----------|----------|--|----------|----------|
| CONTROLLER   |          |          | EMERGENCY VEHICLE LIGHT DETECTOR                 |          |          |
| SERVICE INSTALLATION   |          |          | CONFIRMATION BEACON                              |          |          |
| SIGNAL HEAD  |          |          | SIGNAL HEAD OPTICALLY PROGRAMMED                 |          |          |
| SIGNAL HEAD WITH BACKPLATE                                   |          |          | CONDUIT SPLICE                                   |          |          |
| SIGNAL HEAD, PEDESTRIAN                                      |          |          | WOOD POLE  |          |          |
| SIGNAL POST  |          |          | RACEWAY FOR MAGNETIC DETECTOR, TYPE I OR TYPE II |          |          |
| MAST ARM ASSEMBLY AND POLE, STEEL                            |          |          | VEHICLE DETECTOR, NON COMPENSATED MAGNETIC TYPE  |          |          |
| MAST ARM ASSEMBLY AND POLE, ALUMINUM                         |          |          | RAILROAD CONTROL CABINET                         |          |          |
| COMBINATION MAST ARM ASSEMBLY AND POLE, STEEL WITH LUMINAIRE |          |          | TELEPHONE CONNECTION                             |          |          |
| UNIT DUCT  |          |          | ILLUMINATED SIGN "NO LEFT TURN"                  |          |          |
| COMMON TRENCH  |          |          | ILLUMINATED SIGN "NO RIGHT TURN"                 |          |          |
| HANDHOLE   |          |          | MICROWAVE VEHICLE SENSOR                         |          |          |
| HEAVY DUTY HANDHOLE  |          |          |  |          |          |
| DOUBLE HANDHOLE  |          |          |  |          |          |
| G.S. CONDUIT IN TRENCH (T) OR PUSHED (P)                     |          |          |  |          |          |
| PEDESTRIAN PUSHBUTTON DETECTOR                               |          |          |  |          |          |
| DETECTOR LOOP  |          |          |  |          |          |
| CAST IRON JUNCTION BOX                                       |          |          |  |          |          |

NOTE: THE TRAFFIC SIGNAL CONTROL EQUIPMENT FOR THIS PROJECT SHALL BE "EAGLE".

**SETON ENGINEERING**  
 SERVICE CORPORATION  
 CIVIL ENGINEERS  
 19 S. BOTHWELL STREET  
 PALATINE, ILLINOIS 60067  
 VOICES: 847-776-7200 FAX: 847-776-7239

| REVISIONS | NAME | DATE |
|-----------|------|------|
|           |      |      |
|           |      |      |
|           |      |      |
|           |      |      |
|           |      |      |
|           |      |      |
|           |      |      |
|           |      |      |
|           |      |      |

ILLINOIS DEPARTMENT OF TRANSPORTATION  
**TRAFFIC SIGNAL MODIFICATION AND REMOVAL PLAN**  
 IL RTE 171 (CUMBERLAND AVENUE) AT LAWRENCE AVENUE  
 CHICAGO, ILLINOIS

SCALE: 1"=20'  
 DATE: 10-23-06

DRAWN BY: CWC, BR  
 DESIGNED BY: VO  
 CHECKED BY: TJM