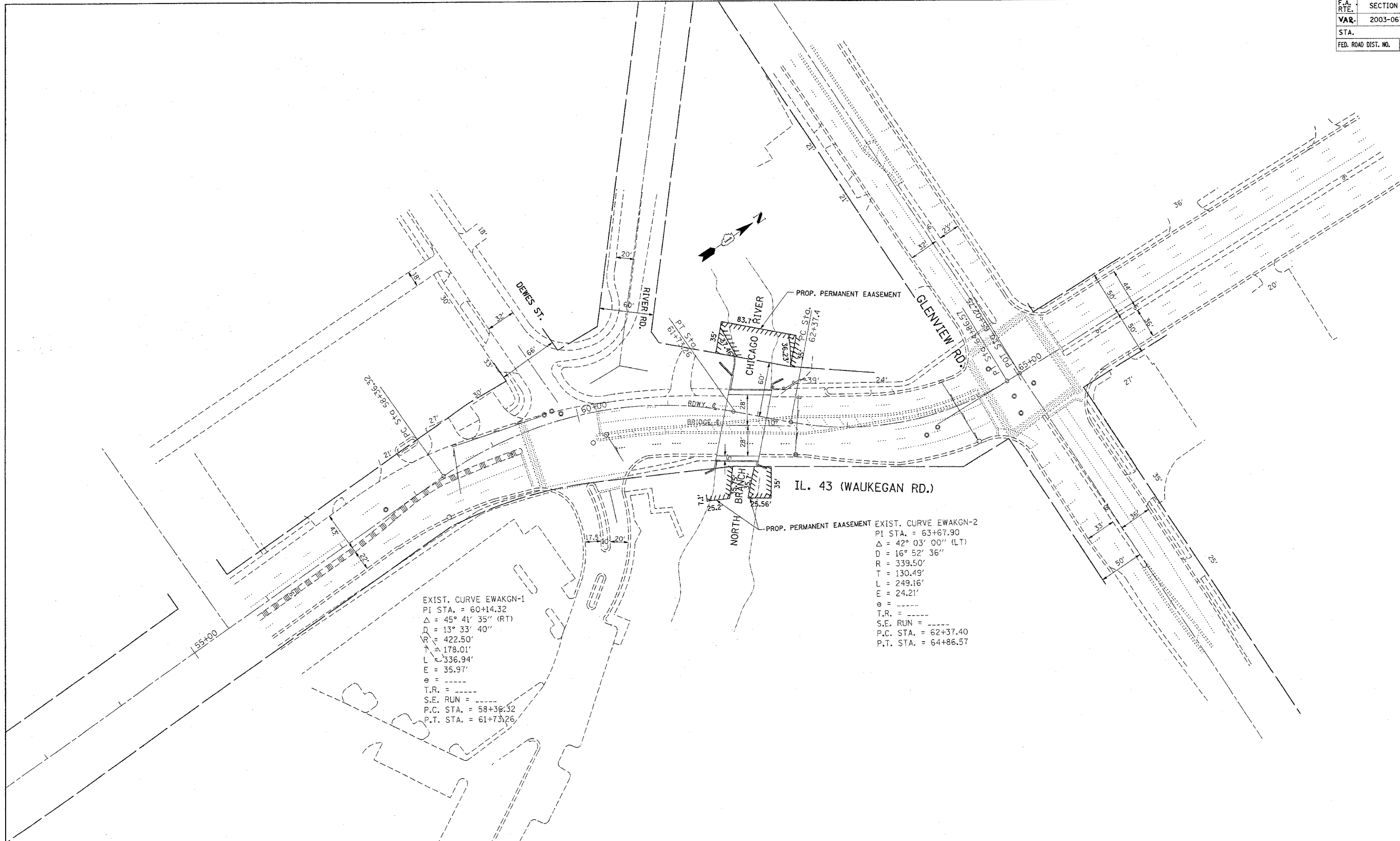


F.A. RTE.	SECTION	COUNTY	TOTAL SHEETS	SHEET NO.
VAR-	2003-0671	VARIOUS	23	7
STA.		TO STA.		
FED. ROAD DIST. NO.	ILLINOIS	FED. AID PROJECT		



EXIST. CURVE EWAKGN-1
 PI STA. = 60+14.32
 $\Delta = 45^\circ 41' 35''$ (RT)
 $D = 13^\circ 33' 40''$
 $R = 422.50'$
 $T = 178.01'$
 $L = 336.94'$
 $E = 35.97'$
 $\theta = \text{---}$
 $T.R. = \text{---}$
 $S.E. RUN = \text{---}$
 $P.C. STA. = 58+38.32$
 $P.T. STA. = 61+73.26$

EXIST. CURVE EWAKGN-2
 PI STA. = 63+67.90
 $\Delta = 42^\circ 03' 00''$ (LT)
 $D = 16^\circ 52' 36''$
 $R = 339.50'$
 $T = 130.49'$
 $L = 249.16'$
 $E = 24.21'$
 $\theta = \text{---}$
 $T.R. = \text{---}$
 $S.E. RUN = \text{---}$
 $P.C. STA. = 62+37.40$
 $P.T. STA. = 64+86.57$

PLOT DATE = 10/25/2006
 FILE NAME = c:\p\proj\era\dl17103\design\fdgn
 USER NAME = amshk

REVISIONS	
NAME	DATE

ILLINOIS DEPARTMENT OF TRANSPORTATION
STR. NO. 016-0307
IL. 43 WAUKEGAN RD. OVER
THE WEST FORK OF THE NORTH
BRANCH OF THE CHICAGO RIVER
LOCATION 1
 SCALE: VERT. _____
 HORIZ. _____
 DATE _____ DRAWN BY _____
 CHECKED BY _____