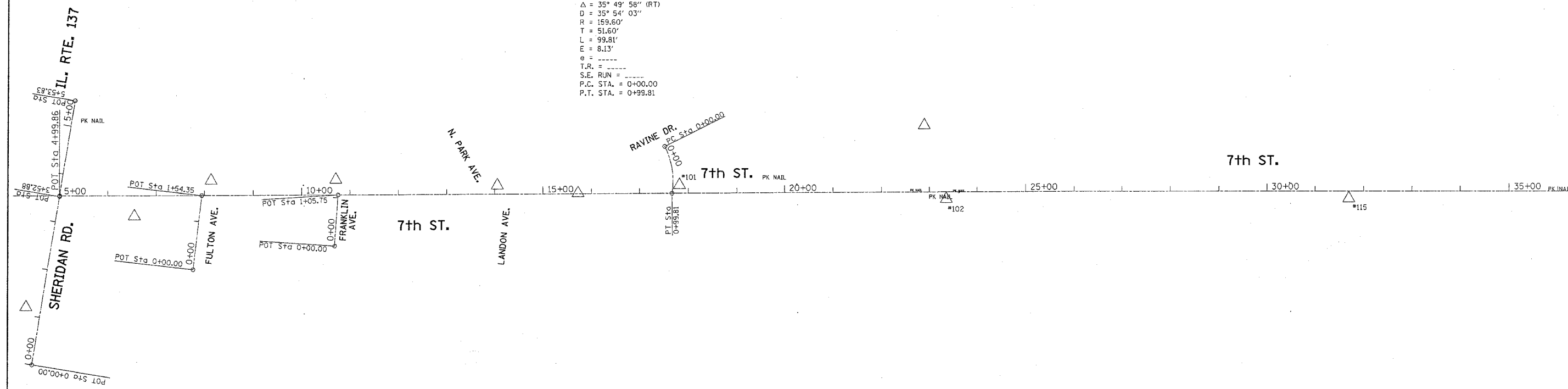


F.A. RTE.	SECTION	COUNTY	TOTAL SHEETS	SHEET NO.
* 2004-025 RS	LAKE	116	17	
STA.		TO STA.		
FED. ROAD DIST. NO.	ILLINOIS FED. AID PROJECT			
* PARK ROADS CONTRACT NO. 62745				
IDNR FILE NO. 2-03-025A				

EXIST. CURVE E_SHER-1
 PI STA. = 0+51.60
 $\Delta = 35^\circ 49' 58''$ (RT)
 $D = 35^\circ 54' 03''$
 $R = 159.60'$
 $T = 51.60'$
 $L = 99.81'$
 $E = 8.13'$
 $\theta = \text{-----}$
 $T.R. = \text{-----}$
 $S.E. \text{ RUN} = \text{-----}$
 $P.C. \text{ STA.} = 0+00.00$
 $P.T. \text{ STA.} = 0+99.81$



TIE POINTS

#101	N=2118815.46 E=1123215.71 ELEV.=599.615
#102	N=2118785.34 E=1123769.21 ELEV.=598.845
#115	N=2118784.954 E=1124602.699 ELEV.=589.989

REVISIONS	
NAME	DATE

ILLINOIS DEPARTMENT OF TRANSPORTATION

NORTH POINT MARINA
ALIGNMENT AND TIES

SCALE: VERT.
DATE HORIZ.

DRAWN BY
CHECKED BY

PLOT DATE = 1/4/2006
 PLOT NAME = c:\projects\2004\025\sh.mxd
 PLOT SCALE = 1"=400'
 USER NAME = drwksn

MATCHLINE STA. 37+00 (7TH ST.)