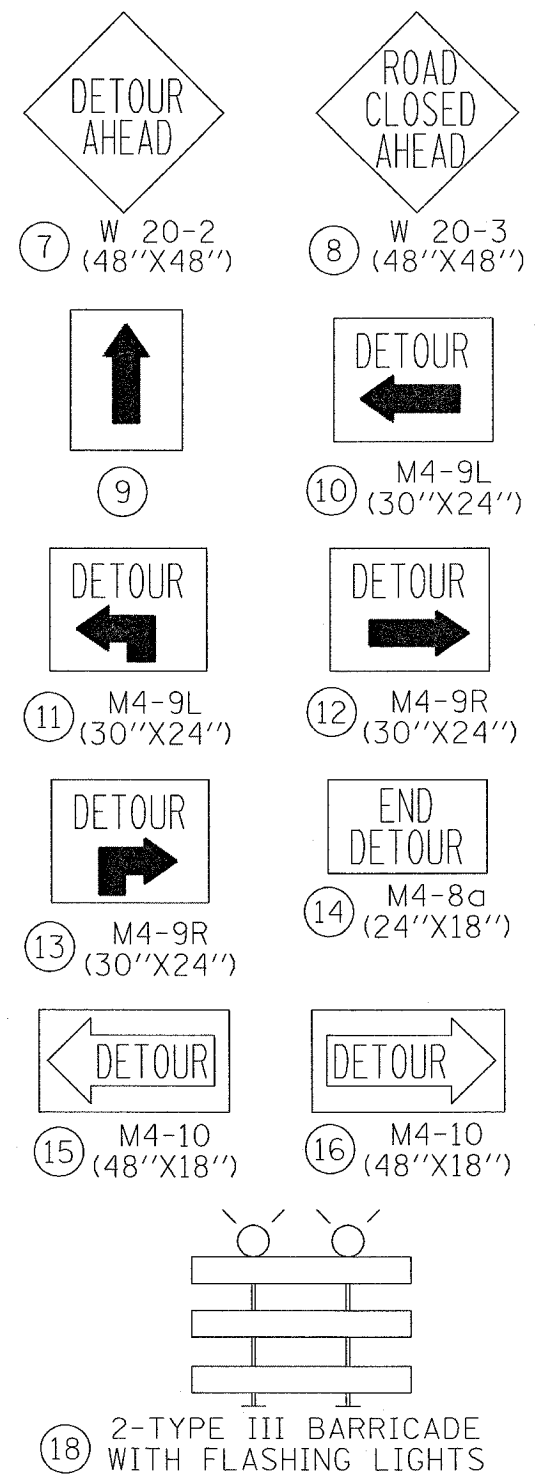


F.A.I. RTE.	SECTION	COUNTY	TOTAL SHEETS	SHEET NO.
* 2004-025 RS	LAKE	116	22	
FED. ROAD DIST. NO. 1	ILLINOIS	FED. AID PROJECT		
* PARK ROADS		IDNR File No. 2-03-025A	D91-191-04	

**LEGEND**

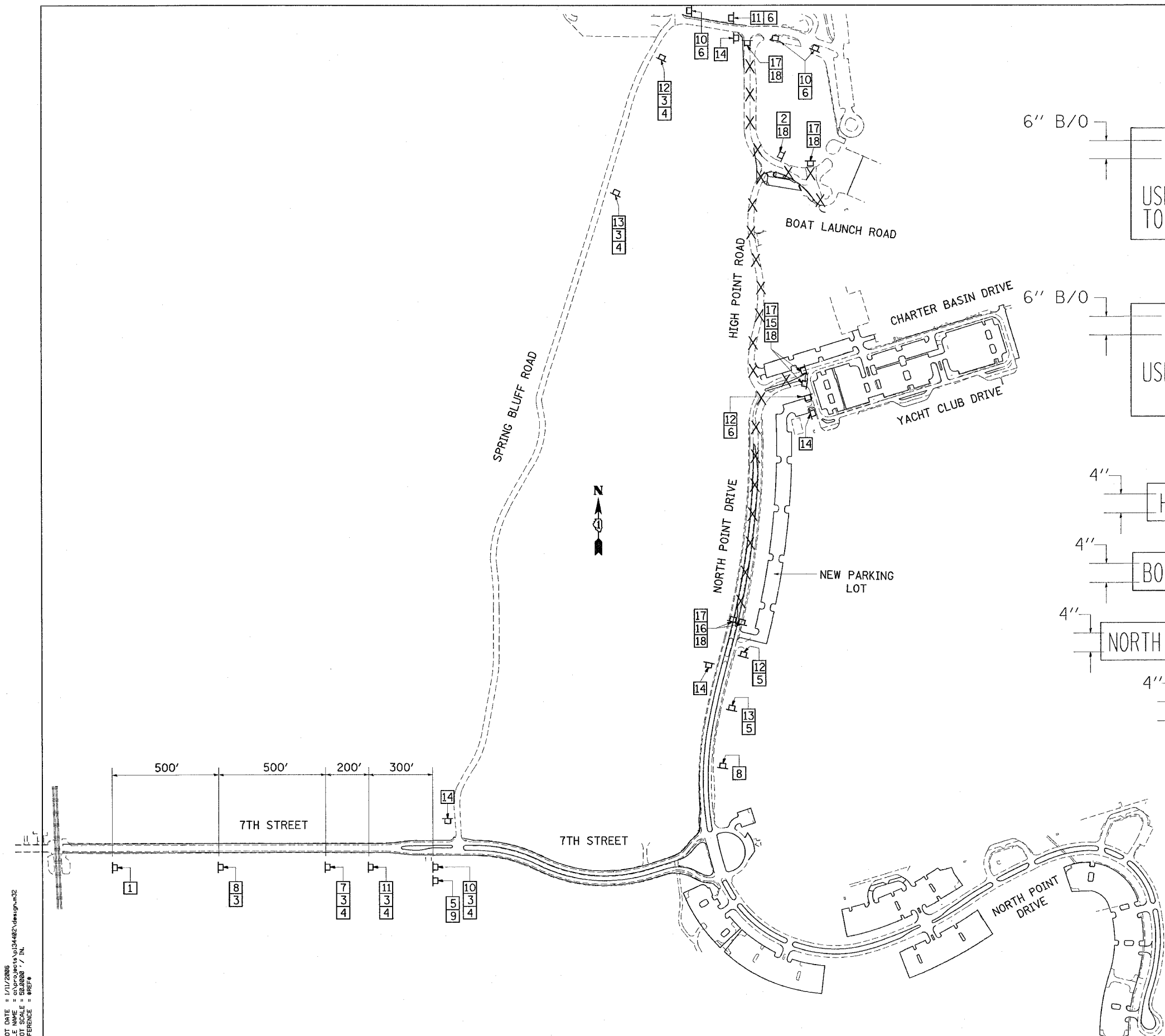
- ① HIGH POINT ROAD CLOSED USE SPRING BLUFF RD. TO BOAT LAUNCH AREA (72"X48") 6" B/O
- ② HIGH POINT ROAD CLOSED USE SPRING BLUFF RD. TO 7TH STREET (72"X48") 6" B/O
- ③ HIGH POINT ROAD 4"
- ④ BOAT LAUNCH AREA 4"
- ⑤ NORTH MARINA PARKING 4"
- ⑥ 7TH STREET 4"
- ⑦ W 20-2 (48"X48")
- ⑧ W 20-3 (48"X48")
- ⑨
- ⑩ M4-9L (30"X24")
- ⑪ M4-9L (30"X24")
- ⑫ M4-9R (30"X24")
- ⑬ M4-9R (30"X24")
- ⑭ M4-8a (24"X18")
- ⑮ M4-10 (48"X18")
- ⑯ M4-10 (48"X18")
- ⑰ R11-2 (48"X30")



X = ROAD CLOSED TO TRAFFIC

REVISIONS	
NAME	DATE

ILLINOIS DEPARTMENT OF TRANSPORTATION  
 PARK ROADS  
 ILLINOIS BEACH STATE PARK  
 NORTH POINT MARINA  
 DETOUR PLAN #1  
 SCALE: DATE  
 DRAWN BY: CDT  
 CHECKED BY:



PLOT DATE = 1/17/2006  
 FILE NAME = 6030301034402.dwg  
 SCALE = 1/8" = 1'-0"  
 REFERENCE = ARBETA