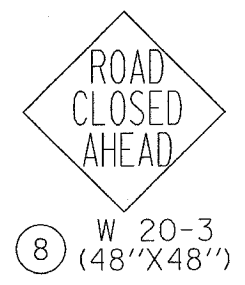
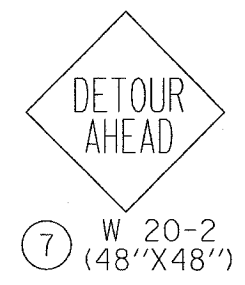


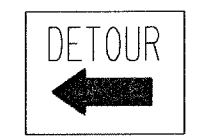
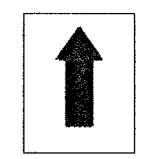
F.A.I. RTE.	SECTION	COUNTY	TOTAL SHEETS	SHEET NO.
* 2004-025 RS	LAKE	116	23	
FED. ROAD DIST. NO. 1	ILLINOIS	FED. AID PROJECT		
* PARK ROADS		IDNR File No. 2-03-025A	091-191-04	

LEGEND

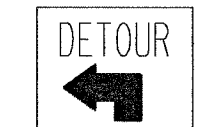
6" B/O
 HIGH POINT ROAD CLOSED
 USE SPRING BLUFF RD. TO BOAT LAUNCH AREA
 (72"X48")
 ①



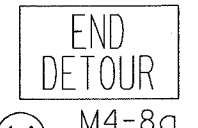
6" B/O
 HIGH POINT ROAD CLOSED
 USE SPRING BLUFF RD. TO 7TH STREET
 (72"X48")
 ②



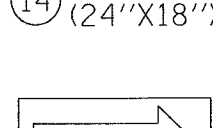
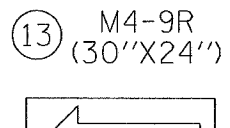
4"
 HIGH POINT ROAD ③



4"
 BOAT LAUNCH AREA ④

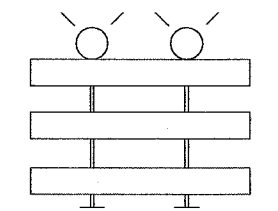


4"
 NORTH MARINA PARKING ⑤



4"
 7TH STREET ⑥

ROAD CLOSED
 ①⑦ R11-2 (48'X30'')

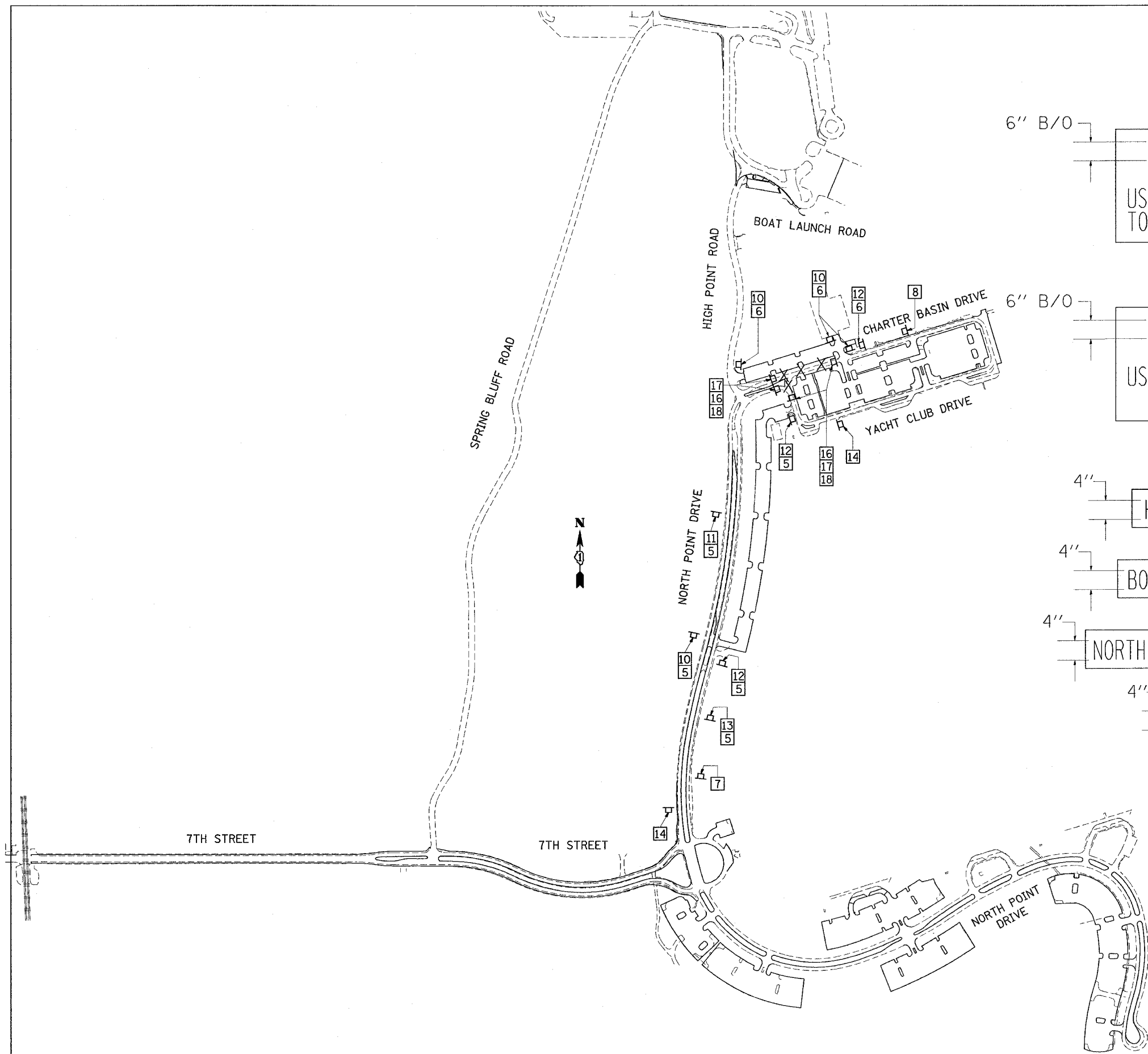


X = ROAD CLOSED TO TRAFFIC

REVISIONS	
NAME	DATE

ILLINOIS DEPARTMENT OF TRANSPORTATION
 PARK ROADS
 ILLINOIS BEACH STATE PARK
 NORTH POINT MARINA
 DETOUR PLAN #2

SCALE: DATE DRAWN BY: CDT CHECKED BY:



PLOT DATE = 1/11/2006
 FILE NAME = c:\projects\p134402\design\m3
 PLOT SCALE = 1/8"=1'-0"
 REFERENCE = REF#