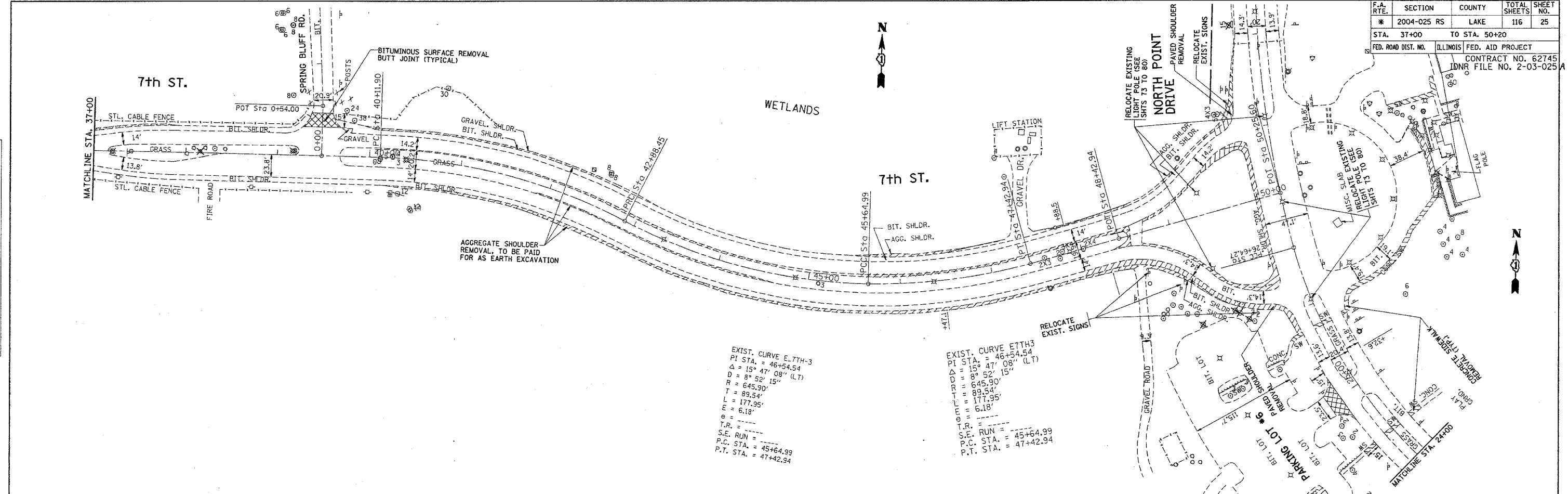


*REF-1007112
*REF-17112

F.A. RTE.	SECTION	COUNTY	TOTAL SHEETS	SHEET NO.
* 2004-025 RS	LAKE		116	25
STA. 37+00	TO STA. 50+20			
FED. ROAD DIST. NO.	ILLINOIS FED. AID PROJECT			
	CONTRACT NO. 62745			
	IDNR FILE NO. 2-03-025			

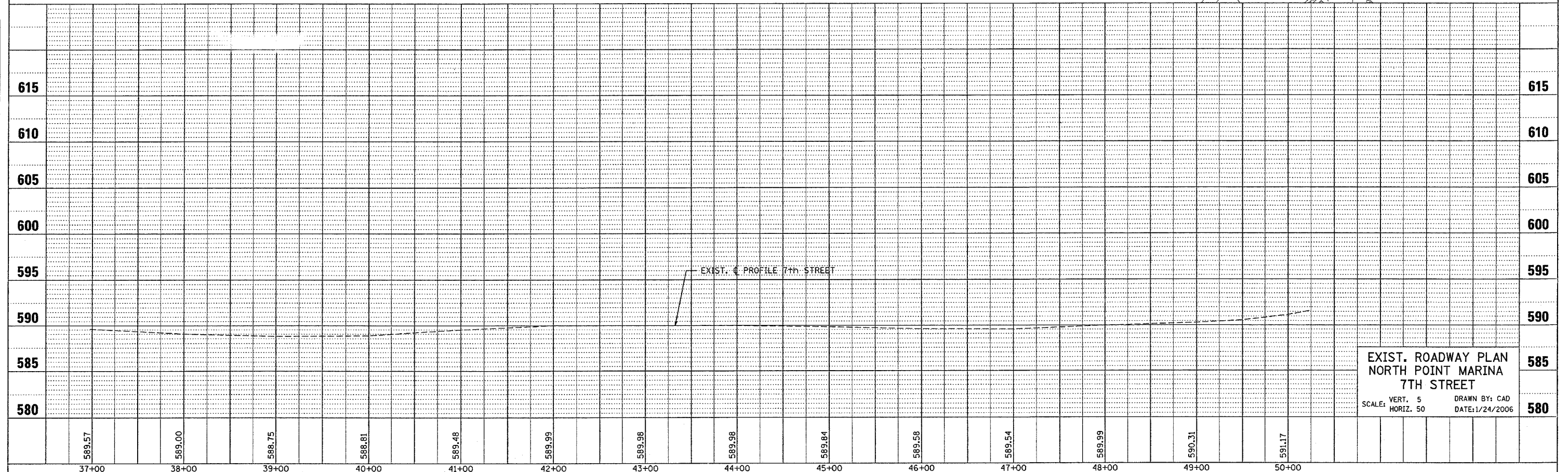
PLAN	DATE	BY
NO.		
NO.		
NO.		

PROFILE	DATE	BY
NO.		
NO.		
NO.		



EXIST. CURVE E. 7TH-3
 PI STA. = 46+54.54
 $\Delta = 15^\circ 47' 08''$ (LT)
 $D = 8^\circ 52' 15''$
 $R = 645.90'$
 $T = 89.54'$
 $L = 177.95'$
 $E = 6.18'$
 $\theta =$
 T.R. =
 S.E. RUN =
 P.C. STA. = 45+64.99
 P.T. STA. = 47+42.94

EXIST. CURVE E. 7TH-3
 PI STA. = 46+54.54
 $\Delta = 8^\circ 52' 15''$ (LT)
 $R = 645.90'$
 $T = 89.54'$
 $L = 177.95'$
 $E = 6.18'$
 T.R. =
 S.E. RUN =
 P.C. STA. = 45+64.99
 P.T. STA. = 47+42.94



EXIST. ROADWAY PLAN
 NORTH POINT MARINA
 7TH STREET
 SCALE: VERT. 5
 HORIZ. 50
 DRAWN BY: CAD
 DATE: 1/24/2006