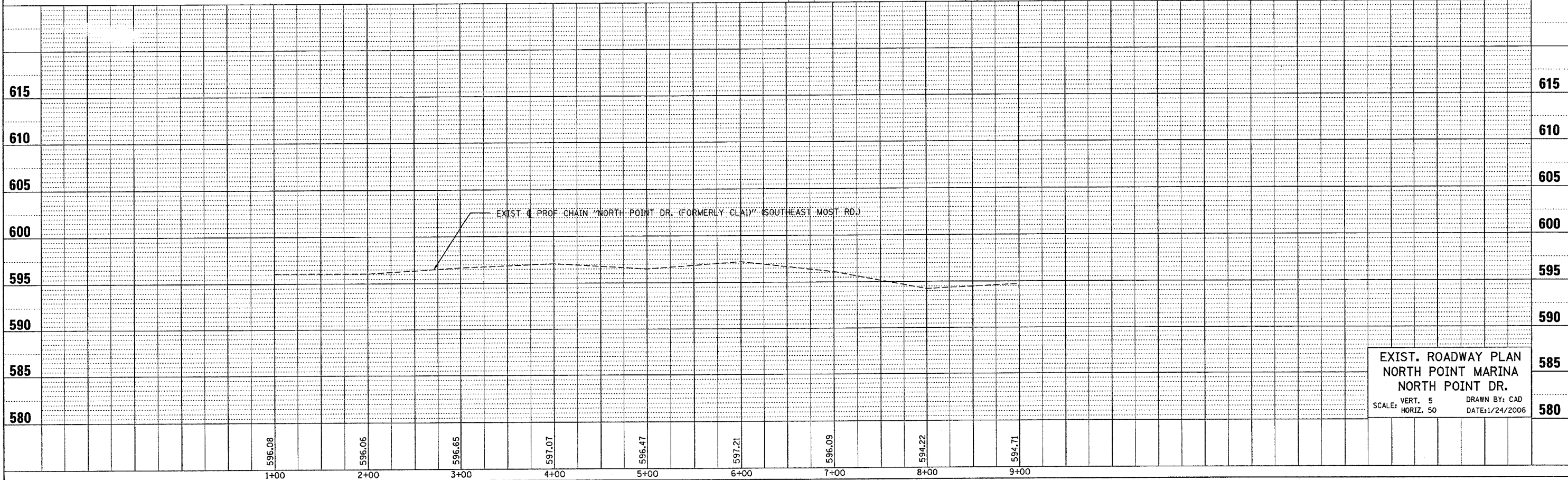
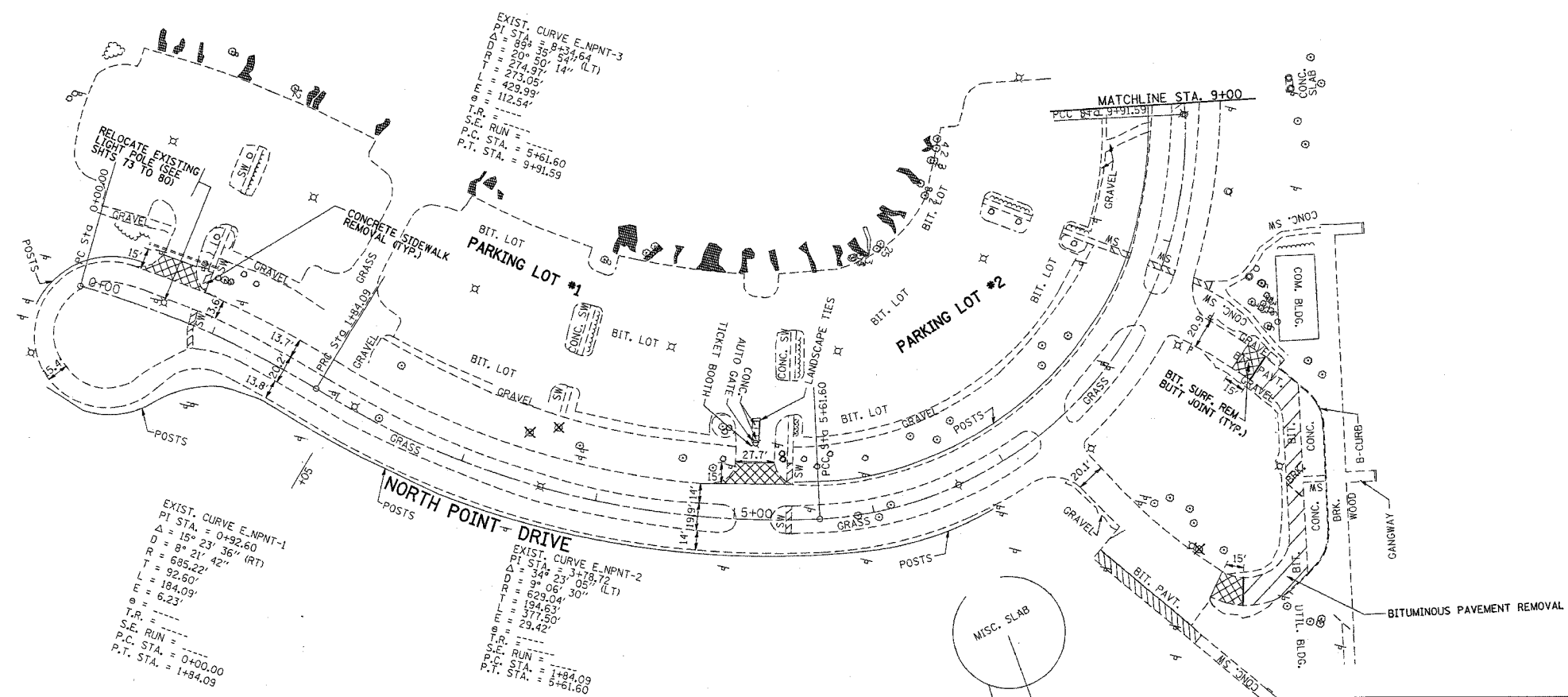


\*REF-topright  
\*REF-pright

F.A. RTE.	SECTION	COUNTY	TOTAL SHEETS	SHEET NO.
* 2004-025 RS	LAKE		116	26
STA.		TO STA.		
FED. ROAD DIST. NO.	ILLINOIS	FED. AID PROJECT		
* PARK ROADS		CONTRACT NO. 62745		
IDNR FILE NO. 2-03-025A				

PLAN	SURVEYED	DATE
	BY	
	NOTED	
	NO.	

PROFILE	SURVEYED	DATE
	BY	
	NOTED	
	NO.	



EXIST. ROADWAY PLAN  
NORTH POINT MARINA  
NORTH POINT DR.  
SCALE: VERT. 5  
HORIZ. 50  
DRAWN BY: CAD  
DATE: 1/24/2006