

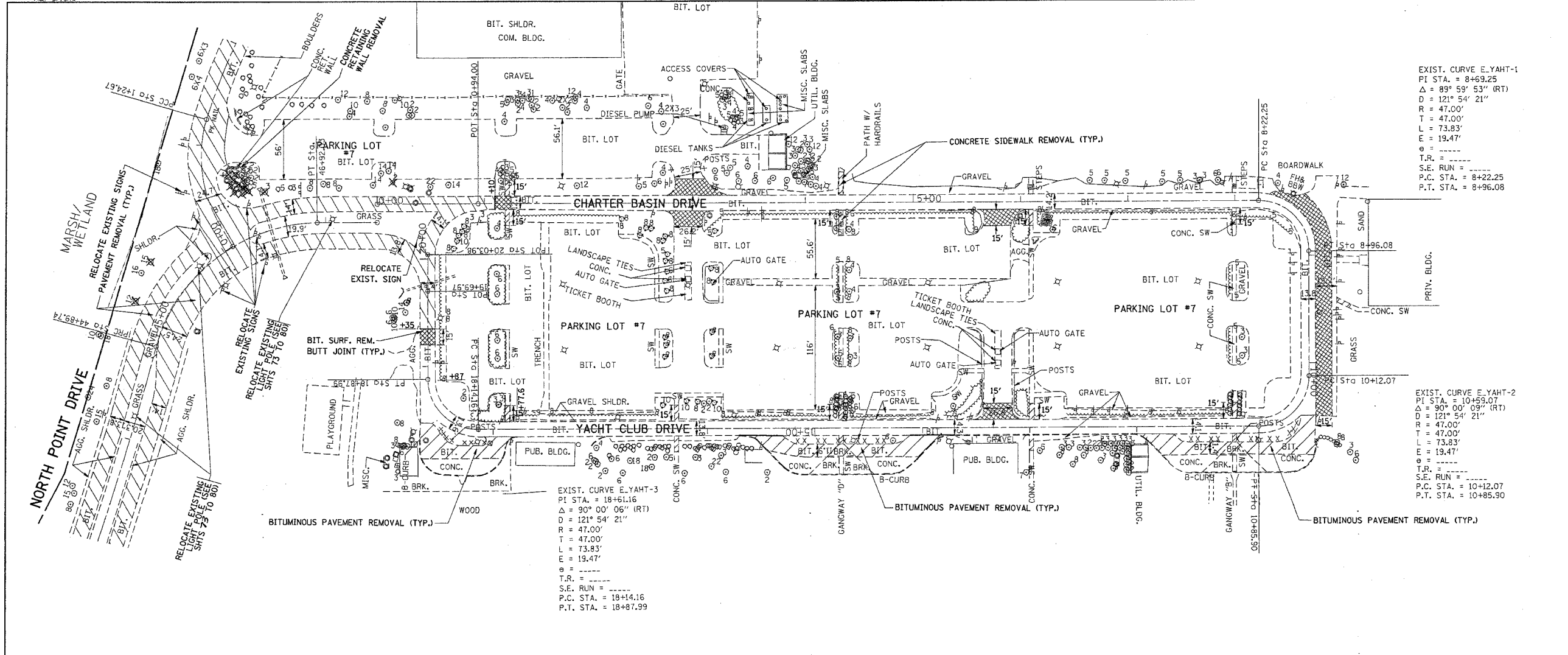
*REF-100yat
 *REF-101yat
 *REF-102yat
 *REF-103yat

F.A. RTE.	SECTION	COUNTY	TOTAL SHEETS	SHEET NO.
* 2004-025 RS	LAKE		116	30
STA. TO STA.		ILLINOIS FED. AID PROJECT		
* PARK ROADS		CONTRACT NO. 62745		
		IDNR FILE NO. 2-03-025A		

EXIST. CURVE E-YAHT-1
 PI STA. = 8+69.25
 $\Delta = 89^\circ 59' 53''$ (RT)
 $D = 121^\circ 54' 21''$
 $R = 47.00'$
 $T = 47.00'$
 $L = 73.83'$
 $E = 19.47'$
 $\theta = \dots$
 $T.R. = \dots$
 $S.E. RUN = \dots$
 $P.C. STA. = 8+22.25$
 $P.T. STA. = 8+96.08$

EXIST. CURVE E-YAHT-2
 PI STA. = 10+59.07
 $\Delta = 90^\circ 00' 09''$ (RT)
 $D = 121^\circ 54' 21''$
 $R = 47.00'$
 $T = 47.00'$
 $L = 73.83'$
 $E = 19.47'$
 $\theta = \dots$
 $T.R. = \dots$
 $S.E. RUN = \dots$
 $P.C. STA. = 10+12.07$
 $P.T. STA. = 10+85.90$

EXIST. CURVE E-YAHT-3
 PI STA. = 18+61.16
 $\Delta = 90^\circ 00' 06''$ (RT)
 $D = 121^\circ 54' 21''$
 $R = 47.00'$
 $T = 47.00'$
 $L = 73.83'$
 $E = 19.47'$
 $\theta = \dots$
 $T.R. = \dots$
 $S.E. RUN = \dots$
 $P.C. STA. = 18+14.16$
 $P.T. STA. = 18+87.99$



PLAN	DATE	BY
SURVEYED		
PLOTTED		
CHECKED		
NOTE BOOK NO.		
FILE NAME		

PROFILE	DATE	BY
SURVEYED		
PLOTTED		
CHECKED		
NOTE BOOK NO.		
FILE NAME		

595	EXIST. CURVE E-YAHT-1															595
590	EXIST. CURVE E-YAHT-2															590
585	EXIST. CURVE E-YAHT-3															585
	0+00	1+00	2+00	3+00	4+00	5+00	6+00	7+00	8+00	9+00	10+00	11+00				
590	EXIST. CURVE E-YAHT-1															590
585	EXIST. CURVE E-YAHT-2															585
580	EXIST. CURVE E-YAHT-3															580
	11+00	12+00	13+00	14+00	15+00	16+00	17+00	18+00	19+00							

EXIST. ROADWAY PLAN
 NORTH POINT MARINA
 YACHT CLUB DR.
 SCALE: VERT. 5
 HORIZ. 50
 DRAWN BY: CAD
 DATE: 1/24/2006